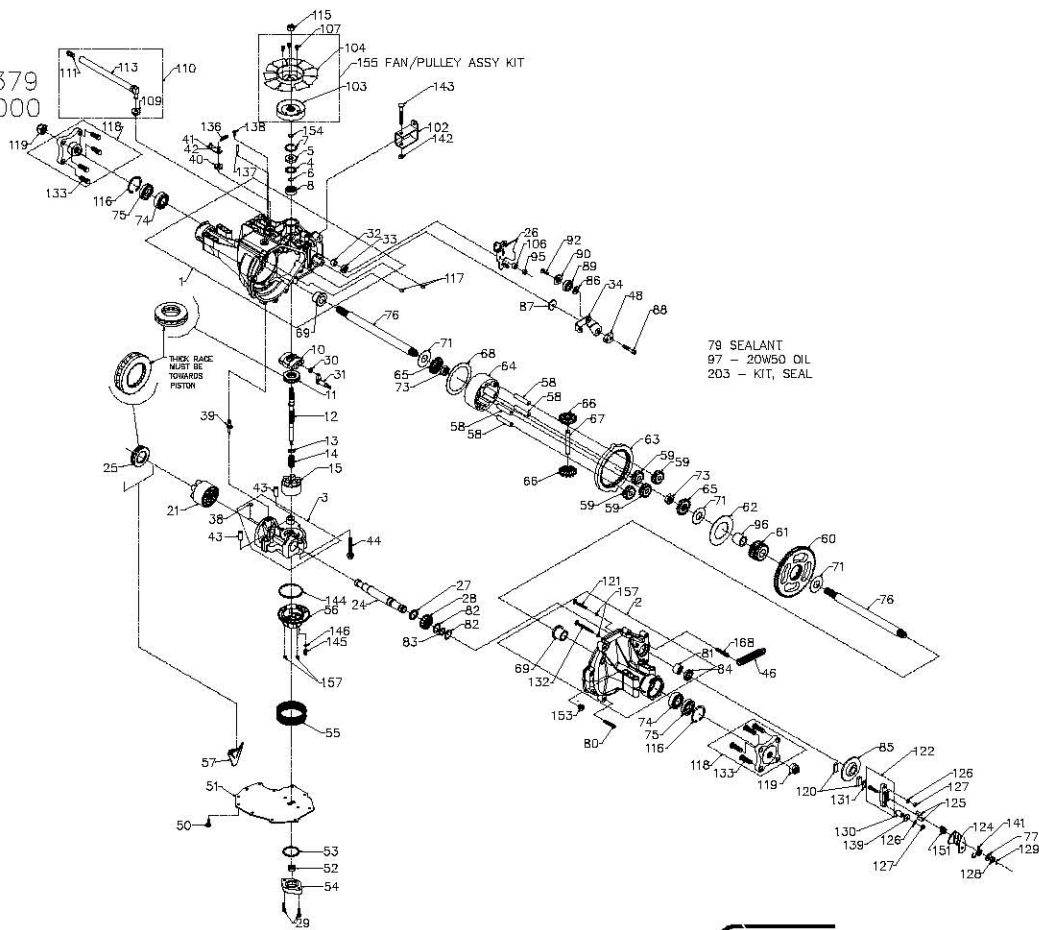


618-0379  
320-3000



Hydro-Gear  
P.1 of 2. 70461-P3

618-0379  
320-3000

ITEM #	PART #	QTY	DESCRIPTION
1	70297	1	MAIN HOUSING ASSEMBLY
		1	MAIN HOUSING
		1	LIP SEAL
		1	FLANGE BEARING
		1	TRUNNION BUSHING
		2	CRADLE BEARING
2	7029B	1	R.H. HOUSING ASSEMBLY
		1	R.H. HOUSING
		1	FLANGE BEARING
		2	O RING
		1	RIB NECK BOLT, 2"
		1	RIB NECK BOLT, 3"
		1	NEEDLE BEARING (SC1412)
		1	LIP SEAL (.875 I.D. x 1.30 D. x .25)
3	706B3	1	CENTER SECTION ASSEMBLY
		1	CENTER SECTION
		1	BUSHING .50X.60X.50
		1	BUSHING .90X1.02X.75
		1	PLATE, BYPASS
		2	CHECK PLUG ASSEMBLY, .027
4	200301B	1	SEAL-LIP
5	9008000-0128	1	WIRE RETAINING RING
6	200301B	1	RETAINING RING
7	2003052	1	BALL BEARING
8	2003043	1	VARIABLE SWASHPLATE
10	2003087	1	THRUST BEARING 30 X 52 X 13
11	50551	1	INPUT SHAFT
12	50795	1	BLOCK THRUST WASHER
13	2003017	1	BLOCK SPRING
14	2003014	1	10cc CYLINDER BLOCK ASSEMBLY
15	70331	1	10cc CYLINDER BLOCK
		5	10cc PISTON
		5	10cc PISTON SPRING
21	70082	5	PISTON SEAT WASHER
		1	21cc CYLINDER BLOCK ASSEMBLY
		1	21cc CYLINDER BLOCK
		7	PISTON SEAT WASHER
		7	21cc PISTON
		7	21cc PISTON SPRING
24	50682	1	OUTPUT (MOTOR) SHAFT
25	50552	1	THRUST BEARING 42 X 68 X 16
26	51125	1	CONTROL ARM
27	50774	1	SPACER
28	50661	1	16T PINION GEAR
29	50975	2	CAPSCREW, M6 X 1-25
30	2000015	1	SLOT GUIDE
31	50807	1	TRUNNION ARM
32	2003009	1	TRUNNION BUSHING
33	9008000-0126	1	LIP SEAL
34	51127	1	RETURN ARM
38	70680	1	KIT, BYPASS PLATE
39	2003555	1	BYPASS ACTUATOR
40	45874	1	LIP SEAL
41	50270	1	BYPASS ARM
42	44870	1	RETAINING RING
43	50002	2	PIN
44	50016	3	SCREW
46	51153	1	RETURN SPRING
48	51097	1	ADJUSTING PUCK

ITEM #	PART #	QTY	DESCRIPTION
50	50752	11	SCREW, 1/4-20 X .75
51	50972	1	LOWER COVER
52	50273	1	GEROTOR ASSEMBLY
53	9004101-1340	1	O-RING
54	50260	1	GEROTOR COVER
55	70538	1	KIT, FILTER
56	51158	1	CHARGE MANIFOLD
57	50786	1	RETAINER, MOTOR BEARING
58	50776	4	PIN, CARRIER
59	50763	4	1ST PLANET GEAR
60	50646	1	87T SPUR GEAR
61	50645	1	21 TOOTH SUN GEAR
62	50769	1	PLANET THRUST PLATE
63	50764	1	51T RING GEAR
64	50785	1	PLANETARY CARRIER
65	50647	2	MITER GEAR, DIFF. (SPLINED)
66	50648	2	MITER GEAR, DIFF.
67	50766	1	SHAFT, DIFFERENTIAL
68	50767	1	DIFF. THRUST PLATE
69	50768	2	FLANGE BEARING
70	50788	3	WASHER 1.0 X 2.25 X .04
71	50791	2	HEX JAM NUT, 5/8-18
72	50771	2	BALL BRG 6205-1
73	50772	2	SEAL 1" ID X 2.0472" X 0.375"
74	50625	2	SHAFT, AXLE
75	44130	1	WASHER
76	50928	1	SEALANT
77	50868	8	TORX HEAD SCREW, 5/16-18
78	44752	1	NEEDLE BEARING (SC1412)
79	50777	2	WASHER
80	50775	1	RETAINING RING
81	50773	1	LIP SEAL (.875 I.D. x 1.30 D. x .25)
82	50779	1	BRAKE DISK
83	50132	1	WASHER .5 X 1.0 X .03
84	50836	1	WASHER
85	50837	1	SCREW, 5/16-24 X 1-1/2
86	51200	1	BEARING
87	51200	1	SPACER, LOCATING
92	50870	1	COUNTERSUNK SCREW
93	50108	1	HEX LOCK NUT 5/16-24
94	50866	1	SLEEVE BEARING
95	50866	1	OIL-20W50
96	50813	12	TORQUE BRACKET
97	50818	1	PULLEY
98	50848	1	FAN
99	50850	1	SPACER, TRUNNION
100	50851	3	SCREW
101	50133	1	BUSHING, RUBBER
102	70302	1	FITTING KIT
103	70302	1	BUSHING, RUBBER
104	70302	1	CAP-VENT ASSEMBLY
105	70302	1	HOSE/FITTING ASSEMBLY
106	70302	1	CAP-VENT ASSEMBLY
107	70302	1	PLASTIC VENT
108	70302	1	CAP-VENT
109	70302	1	HOSE/FITTING ASSEMBLY
110	70302	1	FITTING
111	70109	1	Ø1/2 HOSE, 20" LONG
112	70301	1	PINCH CLAMP
113	70301	1	HEX NUT 1/2-20
114	70301	2	RETAINING RING
115	44133	2	STD HDLS PIN
116	50859	2	HUB ASSEMBLY
117	9004800-2506	2	WHEEL STUD, 7/16-14
118	70276	4	HUB

ITEM #	PART #	QTY	DESCRIPTION
119	50863	2	NUT, HEX 3/4-16
120	44132	2	PUCK, BRAKE
121	50874	1	RIB NECK BOLT, 2"
122	70633	1	YOKER, BRAKE ASSEMBLY
123	50936	1	ARM, BRAKE
124	44127	2	PINS, BRAKE
125	43177	2	LOCKWASHER, 1/4"
126	43178	2	NUT, 1/4-20
127	44142	1	NUT, CASTLE
128	44101	1	COTTER PIN
129	23711	1	SPACER
130	44134	1	PUCK PLATE
131	50865	1	RIB NECK BOLT, 3"
132	50869	8	WHEEL STUD 7/16-14
133	50384	1	EXTENSION SPRING
134	50882	1	SPRING PIN
135	50653	1	SCREW
136	44278	1	WASHER, 7/800 X .2650 X .125 THK
137	50884	1	SPRING, BRAKE ARM BIAS
138	43084	1	HEX LOCK NUT, 5/16-18
139	50886	1	BOLT, 5/16-18 X 2.5
140	50974	1	O-RING, 2.987 X 0.103
141	51157	1	SPRING, RELIEF
142	9001214-4400	1	BALL, 7/16
143	50919	1	COMP. SPRING, BRAKE ANTI-DRAW
144	9005110-5600	1	PLUG, STRAIGHT THREAD
145	50920	1	WIRE RETAINING RING
146	70311	1	FAN/PULLEY ASSY KIT
147	70311	1	PULLEY
148	70311	1	FAN
149	70311	3	SCREW
150	50977	4	O-RING, 0.070X0.239
151	51151	1	SHOULDERED TORX HEAD SCREW 5/16-18
152	70492	1	KIT, SEAL
153	70492	1	SEAL-LIP
154	70492	1	SEAL-LIP
155	70492	1	SEAL-LIP
156	70492	1	O-RING
157	70492	2	SEAL 1" ID X 2.0472" X .375"
158	70492	1	LIP SEAL (.875 I.D. x 1.30 D. x .25)
159	70492	2	O-RING, .070X.239
160	70492	2	SCREW O-RING
161	70492	1	KIT, O-RING, MANIFOLD

Hydro-Gear  
P.2 of 2. 70461-P3