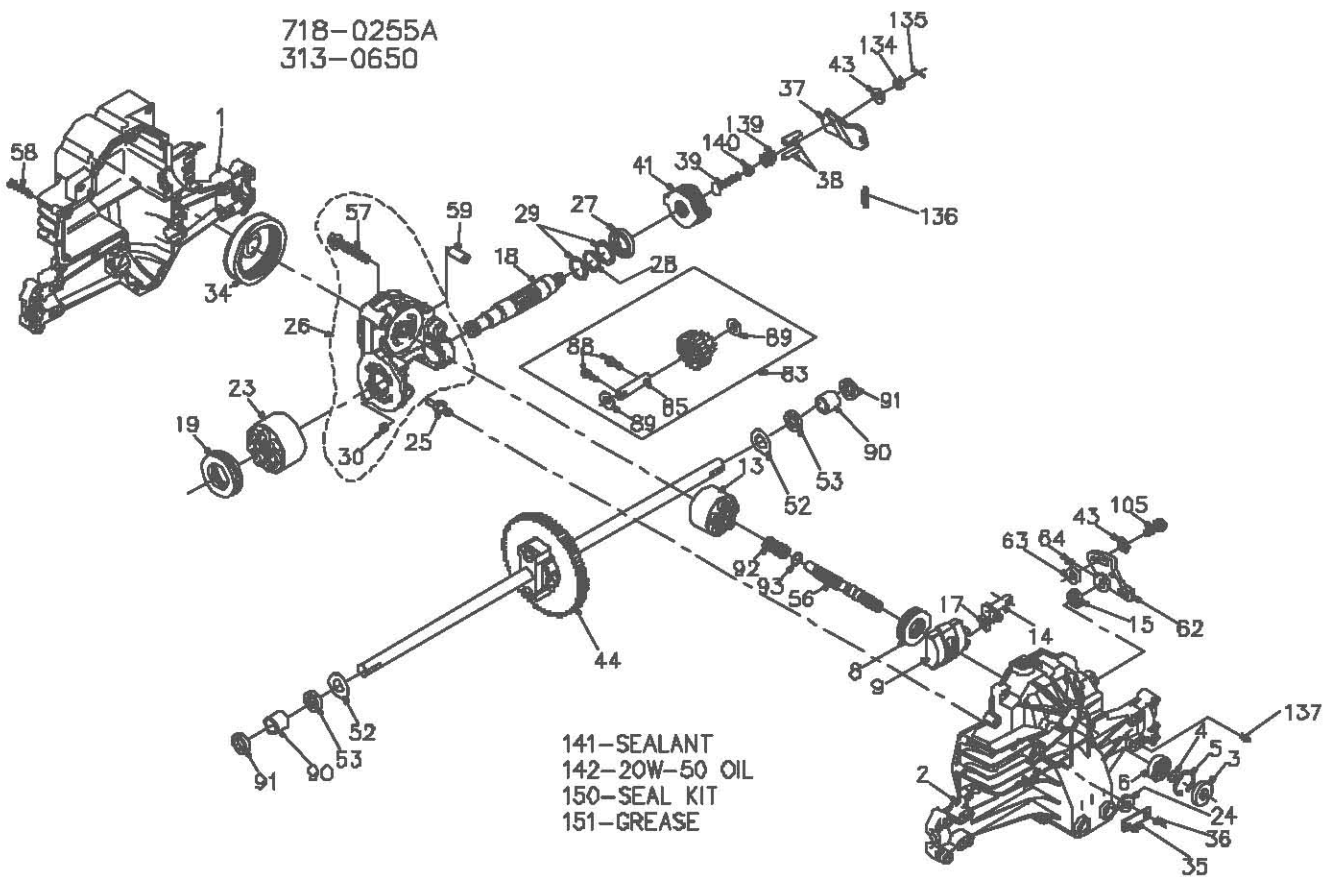


718-0255A
313-0650



ITEM NO	HYDRO-GEAR PART NO	QTY	DESCRIPTION
1	50074RM	1	HOUSING, LOWER
2	70255	1	ASSEMBLY, UPPER HOUSING
		1	HOUSING, UPPER
		1	BEARING-TRUNNION JOURNAL
3	9008000-0128	1	SEAL-LIP
4	2003016	1	RING-WIRE RETAINING
5	2003052	1	RING-RETAINING
6	2003043	1	BEARING-SHAFT BALL
8	50551	1	BEARING-THRUST 30X22X13
9	2003087	1	SWASHPLATE-VARIABLE
13	70331	1	BLOCK-CYLINDER ASSY.
		1	BLOCK-CYLINDER
		5	PISTON
		5	PISTON SPRING
14	2003005	1	PISTON SPRING WASHER
15	9008900-0128	1	ARM-TRUNNION
17	2000015	1	SEAL-LIP
18	50449	1	GLIDE-SLOT
18	50449	1	SHAFT-NOTOR
18	50652	1	BEARING-THRUST 42X88X16
23	70082	1	BLOCK-CYLINDER (MOTOR) ASSY
		1	BLOCK-CYLINDER
		7	PISTON
		7	PISTON SPRING
		7	PISTON SPRING WASHER
24	45074	1	SEAL-LIP 10X26X7
25	2003565	1	ACTUATOR-BYPASS
26	70250	1	KIT, CENTER SECTION
		1	PLATE, BYPASS
		2	CHECK FLUG ASSEMBLY
		1	CENTER SECTION
		1	DI BEARING
		3	BOLT-3/8-24 X 2.5
		1	BUSHING, 1.02 X 1.1 X .87
27	45076	1	SEAL-LIP 26X42X6
28	90007	1	RING-RETAINING
29	44872	2	WASHER-26X35X1
30	70880	1	KIT, BYPASS PLATE
34	44864	1	OIL FILTER ELEMENT
35	50126	1	ARM-BYPASS
36	44870	1	RING-RETAINING
37	50130	1	ARM-ACTUATING
38	44891	2	PIN-ACTUATING
39	50316	1	BOLT-5/16-18 X 1-3/4

ITEM NO	HYDRO-GEAR PART NO	QTY	DESCRIPTION
41	70135	1	BRAKE ROTOR/STATOR KIT
		4	STATOR-BRAKE
		2	ROTOR-BRAKE
43	44130	2	WASHER-7/16 X 7/8 X .080
44	70229	1	DIFFERENTIAL ASSEMBLY
		1	GEAR-DIFF. 90T
		2	DIFF. HOUSING
		2	GEAR-BEVEL 14T
		2	GEAR-PLANET 10T
		2	RING-RETAINING
		2	BOLT- DIFF. LOCKING
		1	AXLE SHAFT, RH
		1	AXLE SHAFT, LH
		1	SPACER-DIFF.
52	44876	2	WASHER-3/4 X 1.5 X .13
53	48076	2	SEAL-.75 X 1.25 X .250
58	50005	1	SHAFT-INPUT
57	50018	3	BOLT, 3/8-24 X 2.6
58	44876	21	BOLT- 1/4-20 X 1.38
59	50002	2	PIN-.5 OD X .43 ID X .750
62	48007	1	ARM-CONTROL
63	50034	1	PUCK-DAMPENER
64	50018	1	SET SCREW
63	70292	1	JACK SHAFT/PINION GEAR ASSEMBLY
		1	JACK SHAFT
		1	177-23T CLUSTER ASSEMBLY
		2	CAPSCREW 8M X 20 LG
		2	WASHER 7/16 X 1 X .5
65	50590	1	JACK SHAFT
66	50154	2	CAPSCREW 8M X 20 LG
66	50132	2	WASHER 7/16 X 1 X .5
90	50118	2	SLEEVE BEARING
91	50941	2	SEAL, LIP 0.75X1.00X0.158
92	2003014	1	SPRING, BLOCK
93	2003017	1	WASHER, BLOCK THRUST
105	50282	1	FLANGE HEAD SCREW, 9/16-24 X 1
134	44142	1	CASTLE NUT, 5/16-24
135	44101	1	COTTER PIN
136	50384	1	EXTENSION SPRING
137	50625	1	SCREW, 10-32 X 1/2
139	50431	1	COMPRESSION SPRING
140	50289	1	NUT, HEX 5/16-24
141	50028	1	SEALANT
142		81oz	20W-50 OIL
150	70312	1	SEAL KIT
161	50418	1	GREASE