



## 8 - 10 - 12 - 14 HP Eight Speed

### MODEL AND SERIAL NUMBERS

Serial and model numbers are necessary to correctly identify your tractor and engine whenever you need repair parts. The tractor model and serial numbers are on a plate attached to the hood stand just below the control panel.

The engine model and serial numbers are on a plate attached to the engine shroud.

For your convenience and ready reference, enter the model and serial numbers in the spaces below.

Tractor Model No.

Tractor Serial No.

\_\_\_\_\_

Engine Model & Spec. No.

Engine Serial No.

\_\_\_\_\_

### TO ORDER PARTS FROM THIS MANUAL

1. Find the illustration of the desired part and note its identifying number.

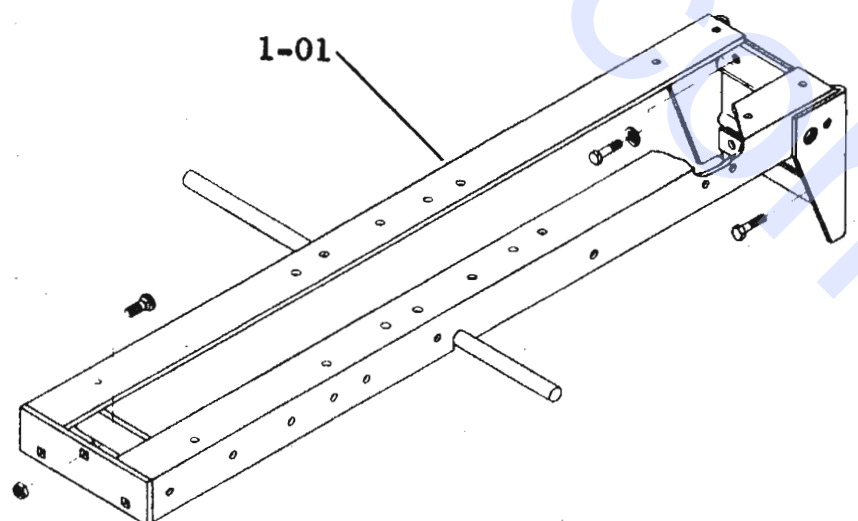
2. Locate the item number in the parts listing and determine the part number and description.
3. Make sure the part to be ordered is for your model tractor as designated in the Model Application Column.
4. Order the part from your local authorized Wheel Horse Dealer.

**WHEEL-HORSE PRODUCTS, INC.**

515 W. Ireland Road, South Bend, Indiana 46614

Plate 1.1

FRAME



# TRANSMISSION 6-SPEED

Plate 3.1

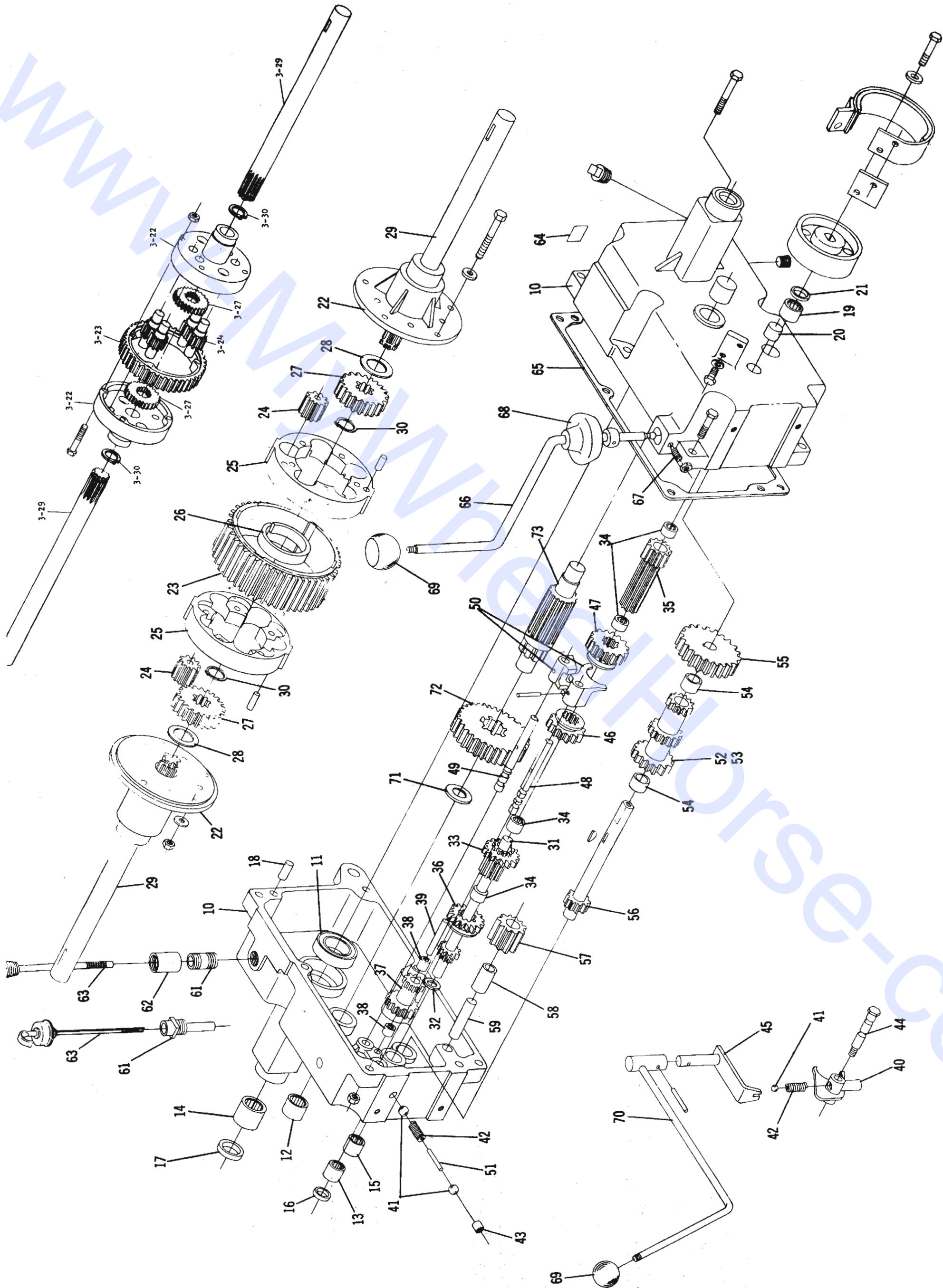


Plate 5.1 FRONT AXLE AND STEERING

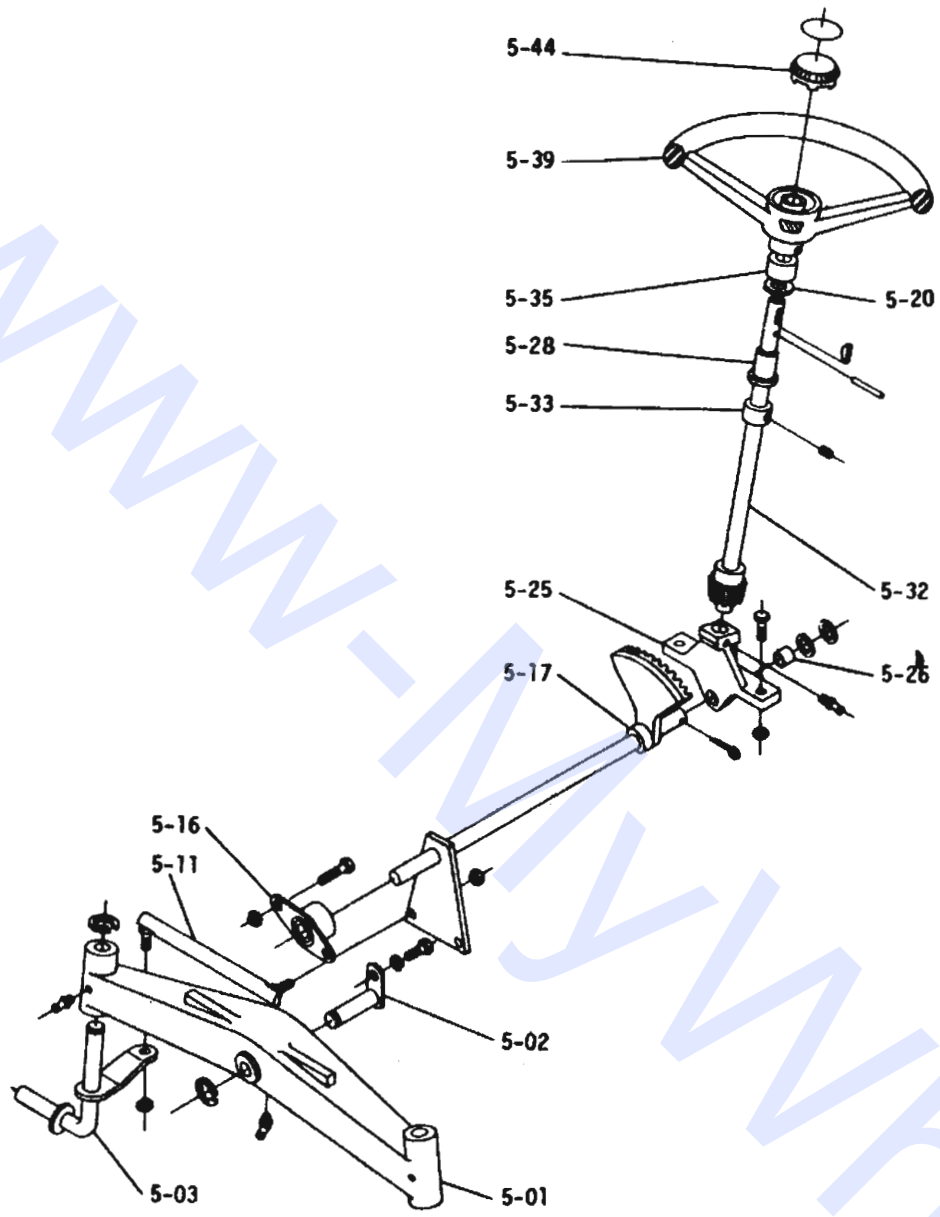


Plate 6.2 BRAKE/CLUTCH LINKAGE

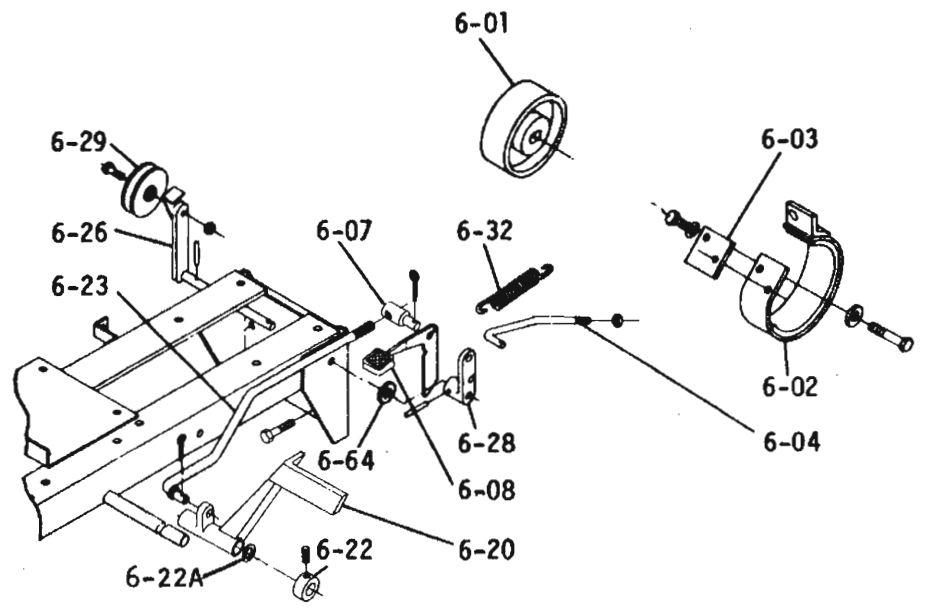


Plate 7.1 HITCHES

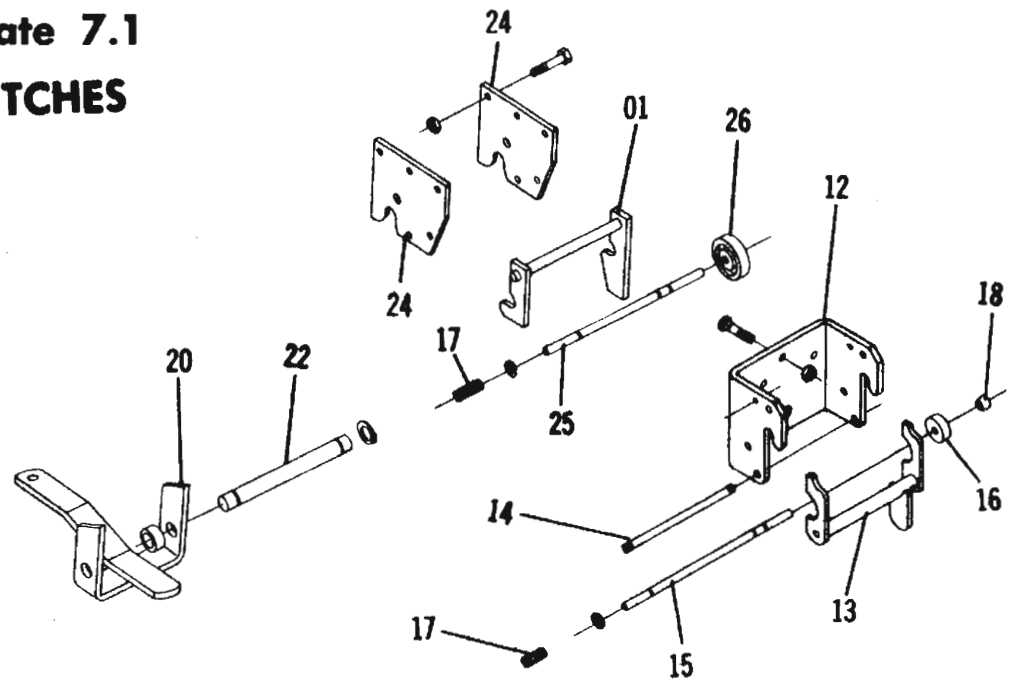
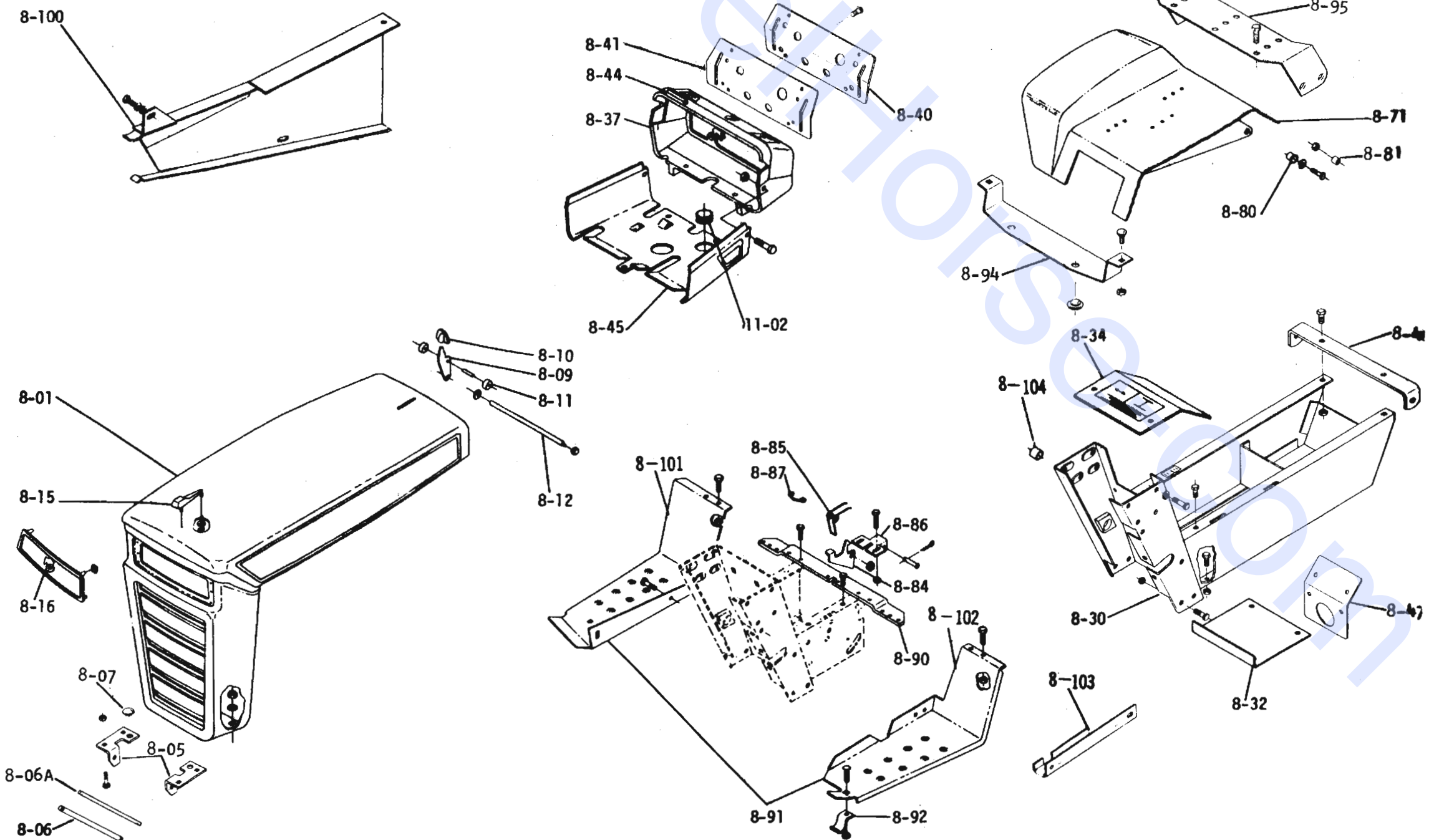


Plate 8.1

SHEET METAL AND COVERS



ITEM NO.	PART NO.	DESCRIPTION	MODEL APPLICATION	NO. REQ'D.	ITEM NO.	PART NO.	DESCRIPTION	MODEL APPLICATION	NO. REQ'D.
<b>1.000 FRAME ASSEMBLY (PLATE 1.1)</b>					<b>3-52 7269 Gear and Bearing, Complete, Cluster</b>				
1-01	101794	Frame Assy.	All models	1			All Models		1
	908032-4	Bolt, $\frac{3}{8}$ -16 x $\frac{3}{4}$ Trans. Upper	unless otherwise shown	2	3-53	3525	Gear — Cluster	unless otherwise shown	1
	920083-4	Lockwasher, $\frac{3}{8}$ Upper Bolts		2	3-54	1504	Bearing — Bronze $\frac{3}{4}$ " I.D.		2
	908033-6	Bolt, Eslok $\frac{3}{8}$ -16 x $\frac{7}{8}$ Trans. Lw.		2	3-55	3527	Gear — Reduction		1
	900063-9	Bolt, Carriage $\frac{3}{8}$ -16 x 1 Ft. Hitch		3	3-56	9840	Shaft — Cluster Gear and Brake		1
	915113-6	Nut, Eslok $\frac{3}{8}$ -16		3		937014	Key — #9 Woodruff		1
<b>3.010 TRANSMISSION 6-SPEED (PLATE 3.1)</b>					<b>3-57 4204 Gear — Reverse Idler</b>				
3-10	8163	Case — R.H.	12, 14	1	3-58	1516	Bushing — Bronze $\frac{1}{2}$ " I.D.		1
	101761	Case — R.H.	8, 10	1	3-59	3909	Shaft		1
	6941	Case — L.H.	12, 14	1	3-61	102703	Nipple — $\frac{1}{2}$ " x $1\frac{1}{2}$ " Pipe		1
	3901	Case — L.H.	8, 10	1	3-63	101847	Dipstick — Assy.		1
	908043-4	Bolt, $\frac{3}{8}$ -16 x $3\frac{1}{2}$ Lower Rear		1	3-65	3912	Gasket — Case		1
	908038-4	Bolt, $\frac{3}{8}$ -16 x 2		5	3-66	5632	Shift Stick		1
	915113-6	Nut, $\frac{3}{8}$ -16 Eslok		6	3-67	1239	Set Screw — Dog Point $\frac{1}{4}$ -20 x $\frac{3}{4}$		1
	943460	Plug, $\frac{1}{4}$ " Pipe Oil Drain		1		915111-4	Nut $\frac{1}{4}$ -20		1
	943420	Plug, $\frac{3}{8}$ " Pipe		1	3-68	3577	Boot		1
3-11	1533	Bearing — Ball $1\frac{1}{2}$ " I.D.		2	3-69	102871	Knob		2
3-12	1532	Bearing — Needle 1" I.D.		2	3-70	7217	Handle — Shift Hi and Low Range		1
3-13	1542	Bearing — Needle $\frac{5}{8}$ " I.D.		1		933184	Roll Pin $\frac{3}{16}$ x $\frac{3}{4}$		1
3-14	1526	Bearing — Needle $1\frac{1}{8}$ " I.D.	12, 14	2	3-71	9547	Washer — Thrust		1
3-14	1528	Bearing — Needle 1" I.D.	8, 10	2	3-72	101626	Gear 44T		1
3-15	1529	Bearing — Needle $\frac{3}{4}$ " I.D.		1	3-73	101625	Gear 11T		1
3-16	100442	Seal — $\frac{5}{8}$ Shaft		1	<b>5.000 FRONT AXLE AND STEERING (PLATE 5.1)</b>				
3-17	100443	Seal — $1\frac{1}{8}$ " Axle	12, 14	2	5-01	5638	Axle Assy. — Front		1
3-17	100863	Seal — 1" Axle	8, 10	2		1030	Fitting — Grease		2
3-18	3915	Pin, Dowel		2		1481	Fitting — Grease		1
3-19	1523	Bearing — Needle $\frac{3}{4}$ " I.D.		1	5-02	6216	Pin and Plate Assy.		1
3-20	1531	Bearing — Needle $\frac{5}{8}$ " I.D.		1		908015-4	Bolt, $\frac{5}{16}$ -18 x $1\frac{1}{2}$		1
3-21	100441	Seal — Brake Shaft		1		920082-4	Lockwasher, $\frac{5}{16}$		1
3-22	8050	End Cap R.H.	12, 14	1	5-03	5630	Spindle Assy. R.H.		1
3-22	8051	End Cap L.H.	12, 14	1		5631	Spindle Assy. L.H.		1
3-22	101053	Case, Differential	8, 10	2		5618	E-Ring		3
	908138-4	Bolt, $\frac{3}{8}$ -16 x $3\frac{1}{4}$	12, 14	5	5-11	102592	Ball Joint Assy. R.H.		1
	908146	Bolt, $\frac{3}{16}$ -18 x $3\frac{1}{4}$	8, 10	4		102593	Ball Joint Assy. L.H.		1
	915663-4	Nut, $\frac{3}{8}$ -16 E.S.	12, 14	5		915002-6	Nut, Eslok $\frac{3}{8}$ -24		4
	915662-4	Nut, $\frac{5}{16}$ -18 E.S.	8, 10	4	5-16	6472	Bearing and Housing		1
3-23	7196	Gear, Differential Ring	12, 14	1		908034-4	Bolt, $\frac{3}{8}$ -16 x 1		2
3-23	3906	Gear, Differential Ring	8, 10	1		915113-6	Nut, Eslok $\frac{3}{8}$ -16		2
3-24	8056	Gear, Differential Pinion	12, 14	10	5-17	6469	Shaft Assy., Lower Steering		1
3-24	101623	Gear, Differential Pinion	8, 10	4		5210	Washer, Shim (.015)		1
3-25	7200	Body	12, 14	2		1278	Washer, Shim (.050)		1
	933209	Roll Pin $\frac{1}{4}$ x $\frac{1}{2}$	12, 14	4		932035-4	Cotter Pin, $\frac{3}{16}$ x $1\frac{1}{4}$		1
3-26	7235	Spring, Cylindrical	12, 14	1	5-20	7896	Washer, Spring		1
3-27	8053	Gear, Axle	12, 14	2	5-25	6396	Support Assy., Lower Steering		1
3-27	3908	Gear, Axle	8, 10	2		908035-4	Bolt, $\frac{3}{8}$ -16 x $1\frac{1}{4}$		2
3-28	7199	Washer, Thrust	12, 14	2		915113-6	Nut, $\frac{3}{8}$ -16 Eslok		2
3-29	7202	Axle, R.H.	12, 14	1		1030	Fitting — Grease		1
3-29	7203	Axle, L.H.	12, 14	1	5-26	6397	Bushing, Lower Shaft		1
3-29	5961	Axle	8, 10	2	5-28	101442	Bushing, Steering Column		1
3-30	7169	Snap Ring	12, 14	2	5-32	102862	Shaft Assy., Upper Steering		1
3-30	7939	Snap Ring	8, 10	2	5-33	1085	Collar, Set		1
3-31	7201	Shaft, Input		1		909848-5	Set Screw, $\frac{1}{4}$ -20 x $\frac{1}{4}$ Nylok		1
3-32	7418	Washer, Thrust		1	5-35	7468	Collar, Steering		1
3-33	7204	Gear and Spline		1	5-39	102715	Wheel, Steering		1
3-34	1518	Bearing, Needle $\frac{5}{8}$ " I.D.		4		933221	Pin Spirol $\frac{1}{4}$ x 2		1
3-35	5175	Pinion — Gear and Spline		1		7896	Washer, Spring		1
3-36	7205	Gear, Sliding		1	5-44	102856	Insert, Steering Wheel		1
3-37	7206	Gear, Reduction		1	<b>6.000 BRAKE/CLUTCH LINKAGE (PLATE 6.2)</b>				
3-38	7207	Bearing — Needle $\frac{3}{8}$ " I.D. x $\frac{1}{2}$		2	6-01	102717	Drum — Brake		1
3-39	7208	Shaft — Reduction		1		908032-5	Bolt, $\frac{3}{8}$ -16 x $\frac{3}{4}$ Nylok		1
3-40	7209	Shift Fork		1		2844	Washer, Special		1
3-41	3517	Ball-Stop		3	6-02	9593	Brake Band Assy.		1
3-42	3518	Spring — Stop		2		908002-4	Bolt, $\frac{1}{4}$ -20 x $\frac{5}{8}$ Brake Anchor		2
3-43	1243	Plug		1		920081-4	Lockwasher, $\frac{1}{4}$		2
3-44	7213	Bolt — Detent		1					
3-45	7214	Lever — Shift		1					
3-46	5173	Gear — Hi and 2nd		1					
3-47	5174	Gear — Low and Reverse		1					
3-48	5615	Rail — Front Shift		1					
3-49	5616	Rail — Rear Shift		1					
3-50	3503	Shift Fork		2					
	933156	Roll Pin $\frac{1}{8}$ x 1"		2					
3-51	5614	Pin, Shift Stop		1					

ITEM NO.	PART NO.	DESCRIPTION	MODEL APPLICATION	NO. REQ'D.	ITEM NO.	PART NO.	DESCRIPTION	MODEL APPLICATION	NO. REQ'D.
6-03	9598	Plate — Park Brake Stop	All Models	1	<b>8.000 SHEET METAL AND COVERS (PLATE 8.1)</b>				
6-04	9599	Rod — Brake	unless otherwise shown	1	8-01	9699	Hood Assy.	All Models	1
	915663-4	Nut, 3/8-16 E.S.		1	8-05	101732	Bracket — Grille Pivot — R.H.	unless otherwise shown	1
	932017-4	Cotter Pin, 1/8 x 1		1		101733	Bracket — Grille Pivot — L.H.		1
6-07	1861	Stud — Clutch Rod		1		900037-4	Bolt, 5/16-18 x 3/4 Carriage		4
	932017-4	Cotter Pin, 1/8 x 1		2		915112-6	Nut, 5/16-18 Eslok		4
6-08	5544	Handle — Parking Brake		1	8-06	101710	Rod — Pivot		1
6-20	102367	Pedal		1		100398	Ring, Retainer		2
6-22	1085	Collar		1	8-06A	101850	Rod — Hood Stop		1
	909848-5	Set Screw, 1/4-20 x 1/4 Nylok		1		932000-4	Cotter Pin, 1/16 x 1/2		2
6-22A	7896	Washer, Spring		1	8-07	5667	Bumper — Rubber		2
6-23	2593	Rod and Guide Assy.		1	8-09	5467	Lever — Hood Latch		1
	932017-4	Cotter Pin, 1/8 x 1		1		933182	Roll Pin, 3/16 x 5/8		1
6-26	9757	Idler Arm Assy.		1	8-10	5469	Knob — Hood Latch		1
	933158	Roll Pin, 1/8 x 1 1/4		1	8-11	5468	Roller — Steel		2
6-28	4899	Arm — Clutch Rod Pivot		1	8-12	5522	Rod — Hood Latch		1
	933158	Roll Pin, 1/8 x 1 1/4		1		5466	Speed Nut, 1/4 Push On 1/2 Dia.		2
6-29	7451	Pulley — Idler		1	8-15	5438	Ornament — Hood		1
	911404-4	Bolt, 3/8-16 x 1 5/8 Special		1		5437	Speed Nut, 1/8 Dia. Push On		2
	915113-6	Nut, 3/8-16 Eslok		1		100646	Washer, Rubber		2
6-32	1014	Spring		1	8-16	7416	Plate — Escutcheon	8, 10	1
6-64	3765	Washer, 1/2" Dia. Special		1		7721	Clip	8, 10	4
						100646	Washer Rubber	8, 10	4
<b>7.000 HITCH ASSEMBLIES (PLATE 7.1)</b>					8-30	102795	Hoodstand Assy.		1
7-12	101711	Hitch — Front		1		908034-4	Bolt, 3/8-16 x 1 To Frame		4
7-13	101741	Latch Assy. — Hitch		1		915113-6	Nut, 3/8-16 Eslok		4
7-14	101750	Rod, Latch Pivot		1		908032-4	Bolt, Tool Box 3/8-16 x 3/4		2
7-15	101751	Rod, Lock		1		920009-4	Washer 3/8 SAE		2
	100398	E-Ring — 3/8		5		920083-4	Lockwasher 3/8		2
7-16	101707	Lock		1	8-32	6825	Cover — Dust		1
7-17	8616	Spring		1		908017-4	Bolt, 5/16-18 x 3/4		2
7-18	3680	Cap		1		915112-6	Nut, 5/16-18 Eslok		2
7-20	1644	Hitch		1	8-34	7220	Plate, Cover		1
7-22	1647	Pin — Hitch Mounting		1		960151-4	Bolt, 1/4-20 x 1/2 Whizlock		2
	979120-4	Spacer		2	8-37	5450	Housing — Control Panel		1
	936125	Snap Ring, 3/4 Shaft		2		960152-4	Bolt, 1/4-20 x 5/8 Whizlock		4
	1813	Tool Pin		1		915111-6	Nut, 1/4-20 Eslok		4
7-24	102644	Plate — R.H. & L.H.		2	8-40	102864	Panel — Dash		1
7-25	102672	Rod — Lock		1	8-41	101841	Plate — Backup		1
7-26	101017	Lock		1		5442	Speednut # 10-16 Tinnerman		4
						102168	Screw S.T. 10-16 x 3/4"		4
<b>7.030 LIFT LINKAGE (PLATE 7.2)</b>					8-44	5606	Tape — Hood Insulation		AR
7-30	5448	Lift Lever Assy.		1	8-45	100498	Support — Fuel Tank		1
	933506-4	Hairpin Cotter, Mounting Block		1		926925-4	Screw 5/16-18 x 3/4 S.T.		4
	908015-4	Bolt, 5/16-18 x 1/2 Mounting		3		3023	Clip	10, 12, 14	AR
	920082-4	Lockwasher, 5/16		3	8-46	102304	Bracket — Seat Pivot		1
7-31	3680	Cap — Rod End		2		908032-4	Bolt, 3/8-16 x 3/4		2
7-32	6542	Grip — Handle		1		915113-6	Nut, 3/8-16 Eslok		2
7-33	3642	Spring		1	8-47	101344	Bracket Instrument		1
7-35	3778	Guide — Plunger Rod		1		MW-4475	Clip Tinnerman 1/4-20		2
7-36	5449	Plunger Rod		1		960151-4	Bolt, Whizlock 1/4-20 x 1/2		2
7-37	4438	Plunger		1	8-71	102370	Fender		1
	933168	Roll Pin, 5/32 x 1 3/16		1	8-80	7879	Bushing — Bronze		2
7-38	102797	Plug		1	8-81	4937	Spacer		2
7-40	5640	Quadrant		1		908035-4	Bolt, 3/8-16 x 1 1/4		2
7-41	2179	Rod — Height Control		1		915663-4	Nut, 3/8-16 E.S.		2
7-42	5280	Knob — Height Control		1		920009-4	Washer, 3/8 — SAE		2
	926715-4	Bolt, 3/8-16 x 3/4 S.T.		2	8-84	7464	Latch — Fender		1
7-43	8277	Conduit Assy.		1	8-85	MW-8863	Spring — Latch		1
7-56	102373	Lift Bar Assy.		1		5977	Bushing		1
7-57	6229	Bearing		1		7617	Pin, 5/16 Rod End		1
	5701	E-Ring 1/2"		1		932008-4	Cotter Pin, 3/32 x 3/4		1
7-58	102385	Rod, Lift		1	8-86	7616	Bracket — Fender Latch		1
7-59	6739	Trunnion		1		908005-4	Screw, 1/4-20 x 1		2
	933504-4	Hairpin Cotter		1		915111-6	Nut, 1/4-20 Eslok		2
	932008-4	Cotter Pin, 3/32 x 3/4		1	8-87	7882	Stop — Fender Latch		1
	915663-4	Nut, 3/8-16 E.S.		1	8-90	7463	Bracket — Foot Rest		1
						926694-4	Screw 5/16-18 x 5/8 S.T.		2

ITEM NO.	PART NO.	DESCRIPTION	MODEL APPLICATION	NO. REQ'D.	ITEM NO.	PART NO.	DESCRIPTION	MODEL APPLICATION	NO. REQ'D.	
8-91	102798	Footrest — R.H.	All Models	1	10-33	101349	Clamp, Hose, Adjustable	All Models	1	
	102799	Footrest — L.H.	unless otherwise shown	1	10-34	950154	Clamp, Corbin 1/2"	unless otherwise shown	5	
	908017-4	Bolt, 5/16-18 x 3/4 To Bracket		4	10-35	101861	Clamp, Hose		AR	
	915662-4	Nut, 5/16-18 E.S.		4		908017-4	Bolt, 5/16-18 x 3/4	10, 12, 14	1	
	960175-4	Bolt, 5/16-18 x 1/2 To Belt Guard		3		908019-4	Bolt, 5/16-18 x 1	8	1	
8-92	7456	Bracket — Footrest Anchor		2		920008-4	Washer, 5/16 SAE	10, 12, 14	1	
	900037-4	Bolt, 5/16-18 x 3/4 Carriage		2		915112-6	Nut, 5/16-18 Eslok		1	
	915662-4	Nut, 5/16-18 E.S.		2	10-40	102258	Muffler Assy.	10, 12, 14	1	
8-94	102248	Bracket — Fender (Front)		1	10-44	102645	Clamp — Muffler	10, 12, 14	2	
	900037-4	Bolt, 5/16-18 x 3/4 Carriage		2	10-45	103096	Nipple	8	1	
	915112-6	Nut, 5/16-18 Eslok		2	10-46	103055	Muffler	8	1	
	5667	Bumper, Rubber		2	10-49	102228	Tube Assy. Inlet	10, 12, 14	1	
8-95	102249	Bracket — Fender Hinge		1						
8-100	101958	Belt Guard Assy.		1	<b>11.000 ELECTRICAL SYSTEM (PLATE 11.1)</b>					
	908045-4	Bolt, 7/16-14 x 3/4 Eng. Mount	10, 12, 14	1	11-01	102953	Harness — Wiring (Main)		1	
	908032-4	Bolt, 3/8-16 x 3/4	8	1		100571	Tie — Wire Retainer		AR	
	920084-4	Lockwasher 7/16	10, 12, 14	1		101446	Insulator (Plastic Shield)		1	
	920040-4	Washer 7/16	10, 12, 14	1	11-02	101971	Grommet Rubber (111. Plate 8.1)		1	
	920083-4	Lockwasher 3/8	8	1	11-03	100335	Wire, Battery to Ground	8	1	
	920039-4	Washer 3/8	8	1		100446	Wire, Battery to Ground	10, 12, 14	1	
8-101	102788	Pad — Footrest R.H.		1	11-04	101972	Wire, Battery to Solenoid	10, 12, 14	1	
8-102	102789	Pad — Footrest L.H.		1		8655	Wire, Battery to Solenoid	8	1	
8-103	102810	Channel — Wire		1	11-05	8655	Wire, Solenoid to Starter		1	
8-104	9690	Spacer		1	11-06	102250	Wire Assy. — Interlock Sw. to Solenoid		1	
<b>9.000 ENGINE (PLATE 9.1)</b>					11-07	102251	Wire Assy. — Interlock Sw. to Harness		1	
9-02	101867	Engine 8 H.P. Kohler	8	1	11-10	101846	Fused Connector	12, 14	1	
	908035-4	Bolt, 3/8-16 x 1/4 Eng. Mount	8	4		101639	Fuse SFE 20 Amp., Box of 5	12, 14	1	
	915663-4	Nut, 3/8-16 E.S.	8	4	11-13	7226	Wire Assy. & Terminal Head Light	12, 14	2	
9-02	101954	Engine 10 H.P. Kohler	10	1	11-14	103137	Wiring Harness Head & Tail Light	12, 14	1	
	101955	Engine 12 H.P. Kohler	12	1		8519	Clip	12, 14	AR	
	101956	Engine 14 H.P. Kohler	14	1	11-20	101917	Switch — Ignition		1	
	908034-4	Bolt, 3/8-16 x 1 Eng. Mount	10, 12, 14	2		101884	Nut — Hex Special 5/8-32		1	
	908036-4	Bolt, 3/8-16 x 1/2	10, 12, 14	2		920160-4	Lockwasher 5/8		1	
	915663-4	Nut, 3/8-16 E.S.	10, 12, 14	2	11-21	7262	Key — Ignition Switch		2	
	920083-4	Lockwasher 3/8	10, 12, 14	2	11-24	102138	Switch — Light	12, 14	1	
9-03	102317	Base — Engine Mounting	8	1		8785	Nut, Knurled 15/32-32	12, 14	1	
	908034-4	Bolt, 3/8-16 x 1 to Frame	8	4		8786	Nut, Hex 15/32-32	12, 14	1	
	915663-4	Nut, 3/8-16 E.S.	8	4		935090-4	Plug Button	8, 10	1	
9-07	5222	Elbow 3/8 x 90°		1	11-25	102046	Ammeter		1	
9-08	943335-4	Nipple 3/8 x 5		1		102047	Clamp, Mounting		1	
9-09	5224	Cap 3/8		1		5924	Nut, 10-32 E.S.		2	
<b>10.000 FUEL AND EXHAUST SYSTEMS (PLATE 10.1)</b>					11-26	8658	Solenoid		1	
10-02	101837	Choke Control Assy.		1		960151-4	Bolt, 1/4-20 x 1/2 Whizlock		2	
10-03	101834	Throttle Control Assy.	10, 12, 14	1	11-28	101450	Regulator — Rectifier		1	
	8713	Screw, Pan Head 10-24 x 3/8		4		908003-4	Bolt, 1/4-20 x 3/4		2	
	915964-4	Nut — Keps 10-24		4		915111-6	Nut, 1/4-20 Eslok		2	
10-04	102186	Knob, Choke		1	11-29	102371	Plate — Coil Mounting	8	1	
10-04A	102185	Knob, Throttle		1	11-30	101845	Switch — Interlock		1	
10-13	100452	Strap, Engine (PTO Side)		1		102277	Nut — Switch 5/16-18		1	
	920007-4	Washer — 1/4 SAE	8	1	11-31	101827	Bracket — Switch Mounting		1	
	910790-4	Screw — 10-24 x 3/8	8	2		908034-4	Bolt — 3/8-16 x 1		1	
	915538-6	Nut — 10-24 Eslok	8	2		915113-6	Nut — 3/8-16 Eslok		1	
10-14	100729	Clip, To Fuel Tank Support		2	11-40	100502	Battery	8	1	
	2879	Clip, Choke and Throttle	10, 12, 14	2		908003-4	Bolt, 1/4-20 x 3/4 Bat. Term.	8	2	
	7922	Clip	8	2		920007-4	Nut, 1/4-20 Bat. Term.	8	2	
	960150-4	Screw — 1/4-20 x 3/8 Whizlock	10, 12, 14	1		915111-6	Washer, 1/4	8	2	
	5431	Nut — Special 1/4-20	10, 12, 14	1	11-40	10050	Battery		6	
	908001-4	Bolt, 1/4-20 x 1/2	10, 12, 14	1		11-41	100438	Cap — Battery Cell	10, 12, 14	1
	915111-6	Nut, 1/4-20 Eslok	10, 12, 14	1		11-42	9155	Cover — Battery Terminal — Positive		1
10-20	100572	Tank, Fuel		1	11-45	7781	Battery Box Assy.	10, 12, 14	1	
10-21	102321	Cap, Fuel Tank		1		4953	Battery Box Assy.	8	1	
10-22	100427	Wire, Tank Hold Down		1		915112-6	Nut, 5/16-18 Eslok		2	
10-25	6949	Spring		1	11-46	7779	Link — Battery Clamp	10, 12, 14	1	
10-30	8023	Valve, Fuel		1		4958	Link — Battery Clamp	8	1	
	5189	Spacer		1		915111-6	Nut, 1/4-20 Eslok		2	
10-31	100327	Filter Assy. — Fuel		1						
10-32	*9212	Hose—Fuel—Valve to Tank 6.5"		1						
	*8714	Hose—Fuel—Tank to Filter 8.5"	8	1						
	*9147	Hose—Fuel—Valve to Filter 8.5"	10, 12, 14	1						
	*102604	Hose—Fuel—Filter to Pump 16"	8	1						
	*1796	Hose—Fuel—Filter to Pump 19 3/4"	10, 12, 14	1						
	*102713	Hose—Fuel—Pump to Carb. 3"	8	1						
	*8025	Hose—Fuel—Pump to Carb. 5.5"	10, 12, 14	1						
	*Cut from 6554									

ITEM NO.	PART NO.	DESCRIPTION	MODEL APPLICATION	NO. REQ'D.	ITEM NO.	PART NO.	DESCRIPTION	MODEL APPLICATION	NO. REQ'D.
<b>11.060 LIGHTS AND CIGAR LIGHTER (PLATE 11.2)</b>					<b>All Models unless otherwise shown</b>				
11-60	7223	Reflector Hd. Light & Housing & Socket	12, 14	1	14-55	6659	Retainer, Bearing Race	All Models	2
11-61	7227	Spring — Hd. Light Socket	12, 14	2	960151-4		Bolt, 1/4-20 x 1/2 Whizlock	unless otherwise shown	4
11-62	7228	Bulb — Hd. Light #1156	12, 14	2	14-56	6663	Seal		1
11-63	7075	Lens — Hd. Light	12, 14	1	14-57	6662	Bearing		1
	7229	Screw, 6-32 x 3/8 S.T. Special	12, 14	4	14-58	9209	Housing — Clutch & Pulley		1
11-65	7618	Connector, 3 Wire	12, 14	1	14-59	5196	Bearing, Ball		1
	3023	Clip	12, 14	4	14-60	936032	Snap Ring, 1 3/4 Bore		1
	938007	Bushing — Ins.	12, 14	1	14-61	933506-4	Hairpin Cotter		1
11-67	8041	Base — Tail Light W. Bulb	12, 14	1	14-62	936125	Snap Ring, 3/4 Shaft		1
11-68	8042	Cover	12, 14	1	14-75	102872	Shaft — Clutch		1
11-69	8043	Bulb, Tail Light	12, 14	1	14-76	102938	Rod — Housing		1
11-70	8044	Pad, Tail Light Mounting	12, 14	1	14-77	933172	Spiral Pin 5/32 x 1 1/8		2
11-71	6922	Connector — 2 Wire	12, 14	1	14-78	102941	Clevis		1
	3023	Clip	12, 14	3	14-79	102956	Pin		1
	910808-4	Bolt, Pan Hd. 10-32 x 5/8	12, 14	2	14-80	909880-5	Set Screw 3/8-16 x 3/4		1
	915551-4	Nut, Hex 10-32	12, 14	2	14-81	102942	Bracket — Engine		1
	920079-4	Lockwasher #10	12, 14	2	14-82	920084-4	Lockwasher 3/8		1
11-81	102189	Knob & Plug		1	14-83	102943	Plate		1
11-82	5483	Retainer		1	14-84	102704	Spacer		1
11-83	5482	Socket		1	14-85	908046-4	Bolt — Hex 3/8-16 x 1		1
11-84	935109-4	Plug Button — Lighter		1	14-86	102809	Nut Flange		1
<b>13.000 WHEELS AND TIRES (PLATE 13.1)</b>					<b>15.000 SEATS, DECALS, MISC. TRIM (PLATE 15.1)</b>				
13-01	9791	Wheel & Tire Assy. — Front		2	15-01	100780	Cushion — Seat One Piece	8, 10	1
13-02	5432	Wheel & Tire Assy. — Rear	12, 14	2	101444		Tape — Foam	8, 10	2
	100969	Wheel & Tire Assy. — Rear	8, 10	2	908015-4		Bolt, 5/16-18 x 1/2	8, 10	2
13-03	9652	Wheel & Bearing Assy. — Front		2	908016-4		Bolt, 5/16-18 x 5/8	8, 10	2
13-04	5433	Wheel — 12 x 7 JA		2	920082-4		Lockwasher — 5/16	8, 10	4
	5435	Valve — Tubeless Tire		4	915932-4		Nut, High Crown 10-24	8, 10	2
13-05	9792	Tire 16 x 6.50-8 Front		2	15-02	102033	Seat Base Assy.	12, 14	1
13-06	5434	Tire 9 x 12 Rear	12, 14	2	15-03	9662	Spacer	12, 14	2
	100772	Tire 7.50-12	8, 10	2	900038-4		Bolt, 5/16-18 x 1 Carriage	12, 14	4
13-07	5512	Tube 16 x 6.50-8 (Service Only)		2	915112-6		Nut, 5/16-18 Eslak	12, 14	4
13-08	7007	Tube 23 x 8.50-12 (Service Only)		2	101444		Tape Foam	12, 14	1
13-11	4999	Bearing — Ball Front Wheel		2	15-04	9663	Cushion — Seat	12, 14	1
	908033-6	Bolt, 3/8-16 x 3/8		2	960151-4		Bolt, 1/4-20 x 1/2 Whizlock	12, 14	3
	2844	Washer		2	15-05	9664	Cushion — Back	12, 14	1
	1278	Washer (.050")		2	15-06	9665	Knob — Back Adjusting	12, 14	1
	5210	Washer (.015")		2	920082-4		Lockwasher	12, 14	4
13-15	6465	Hub, Wheel (5 Bolt)	12, 14	2	915932-4		Nut, High Crown 10-24	12, 14	2
	4996	Hub, Wheel (5 Bolt)	8, 10	2	908016-4		Bolt, 5/16-18 x 5/8	12, 14	2
	909554	Set Screw 3/8-16 x 1 — Sq. Hd.		2	15-20	102831	Decal — Hood Trim (Wheel Horse)		2
	915236-4	Nut — Hex 3/8-16 Jam		2	15-23	103027	Decal — 8 — 8 Speed		2
	937022	Key — Woodruff #15		2	103026		Decal — 10 — 8 Speed		2
13-16	1004	Lug Bolt		10	103025		Decal — 12 — 8 Speed		2
13-21	7747	Hub Cap		2	103024		Decal — 14 — 8 Speed		2
<b>14.000 DRIVE BELTS AND PULLEYS (PLATE 14.1)</b>					<b>15.25 8138 Decal — Fender</b>				
14-01	7473	V-Belt — Drive		1	15-26	100614	Reflector — Fender	8, 10	1
14-03	101875	Pulley — Engine	8	1	15-32	7472	Decal — Seat Latch		1
	7466	Pulley — Engine	10, 12, 14	1	15-34	102843	Decal — Caution		1
	6507	Key — 1/4 x 1/4 x 1/2		1	15-35	102844	Decal — Read Operator Manual		1
	909862-5	Set Screw 5/16-18 x 5/16		2	15-36	102948	Decal — Hand Lift		1
14-10	7492	Pulley, Trans. Main Drive		1	15-37	102947	Decal — Shift Knob		1
	937221	Key		1	15-38	102842	Decal — Parking Brake		1
	909862-5	Set Screw		1	15-39	102859	Decal — PTO		1
<b>14.050 MANUAL P.T.O. (PLATE 14.3)</b>					<b>15.32 7472 Decal — Seat Latch</b>				
14-53	6655	Clutch Plate & Facing Assy.		1	15-34	102843	Decal — Caution		1
	6656	Plate — Clutch		1	15-35	102844	Decal — Read Operator Manual		1
	4365	Facing		1	15-36	102948	Decal — Hand Lift		1
	6657	Rivet		6	15-37	102947	Decal — Shift Knob		1
14-54	6935	Race, Bearing		1	15-38	102842	Decal — Parking Brake		1

Plate 7.2

LIFT LINKAGE

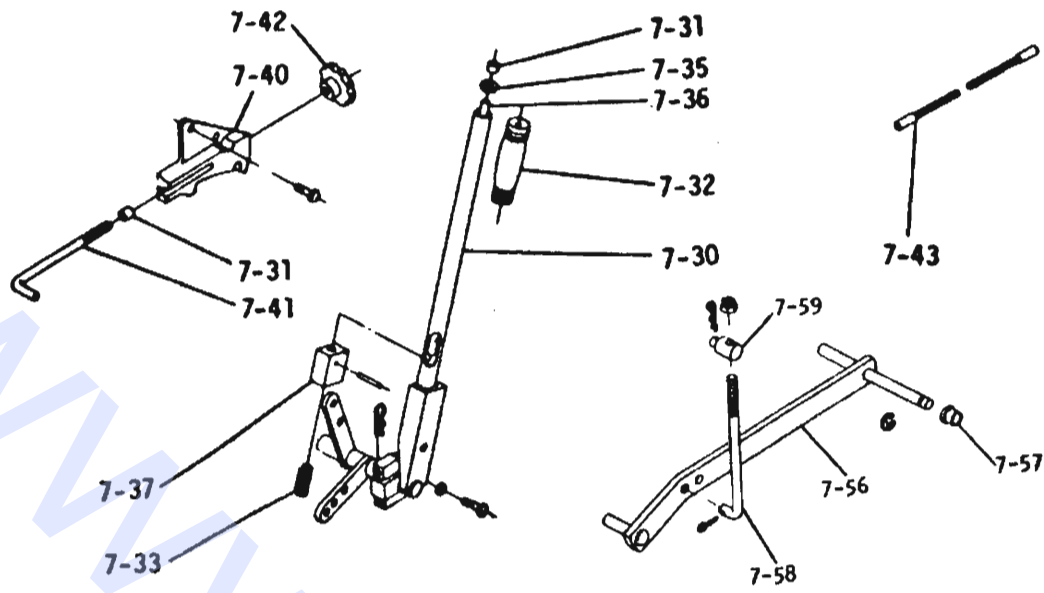


Plate 91

ENGINE

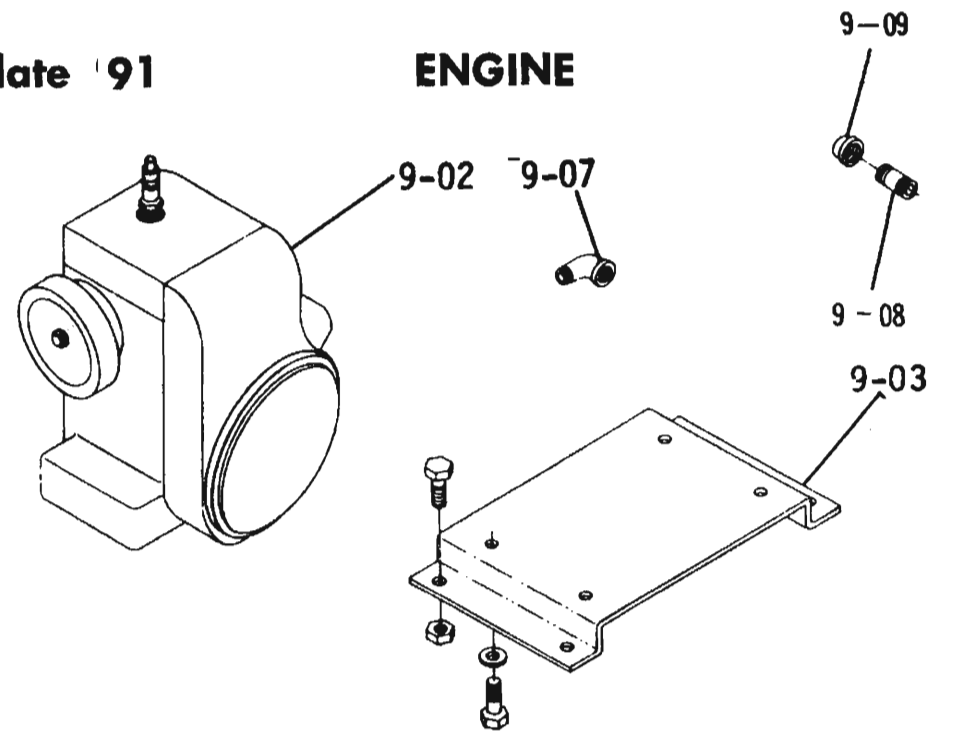


Plate 10.1

FUEL AND EXHAUST SYSTEMS

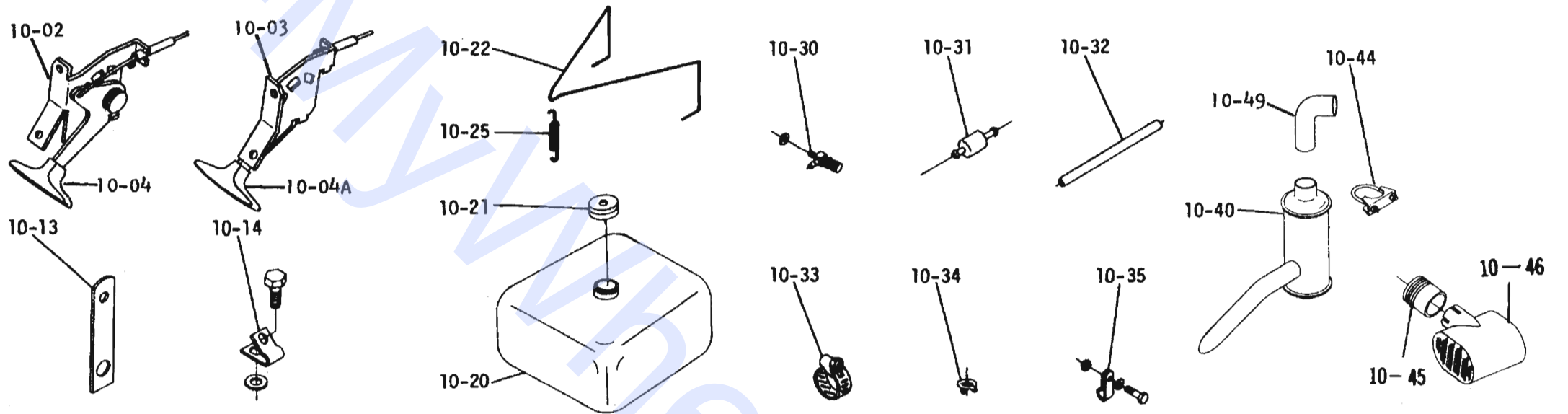


Plate 14.1

DRIVE BELTS, PULLEYS

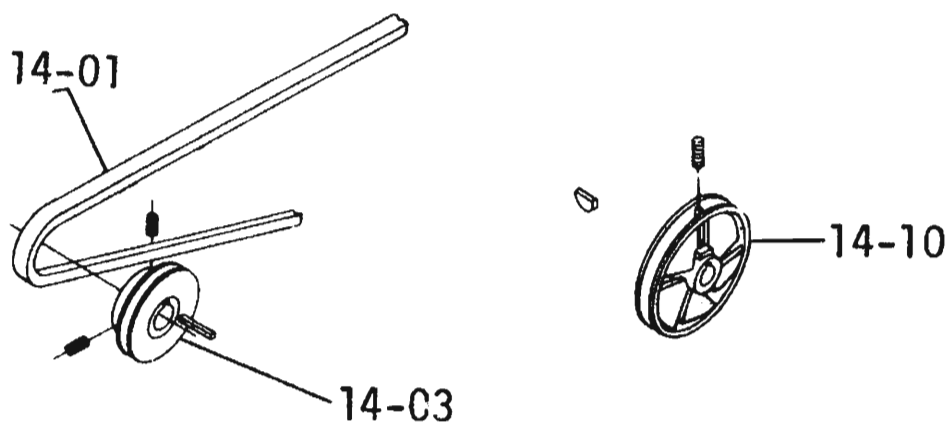


Plate 11.1

ELECTRICAL SYSTEM

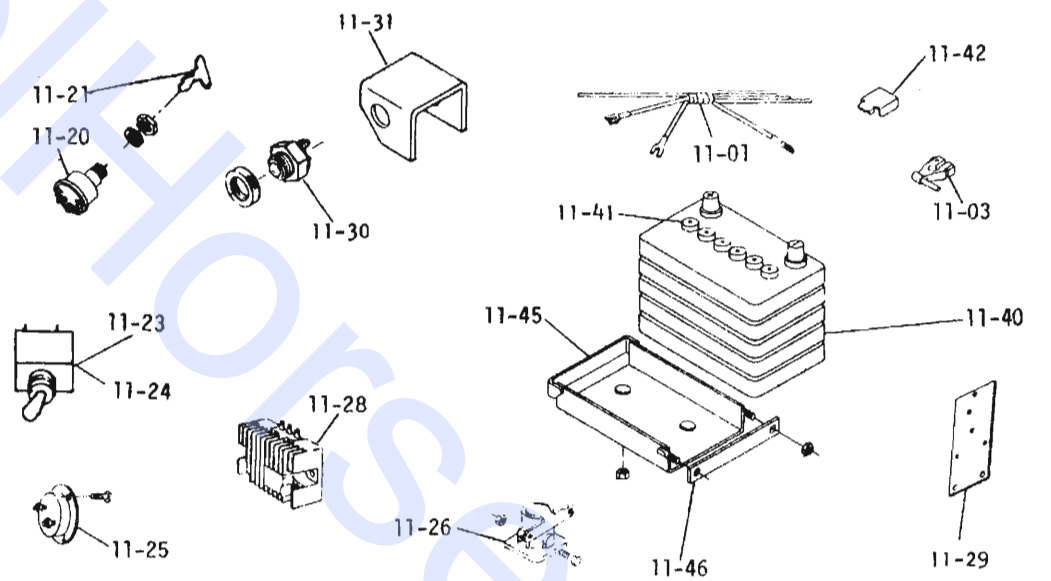


Plate 11.2 LIGHTS & CIGAR LIGHTER

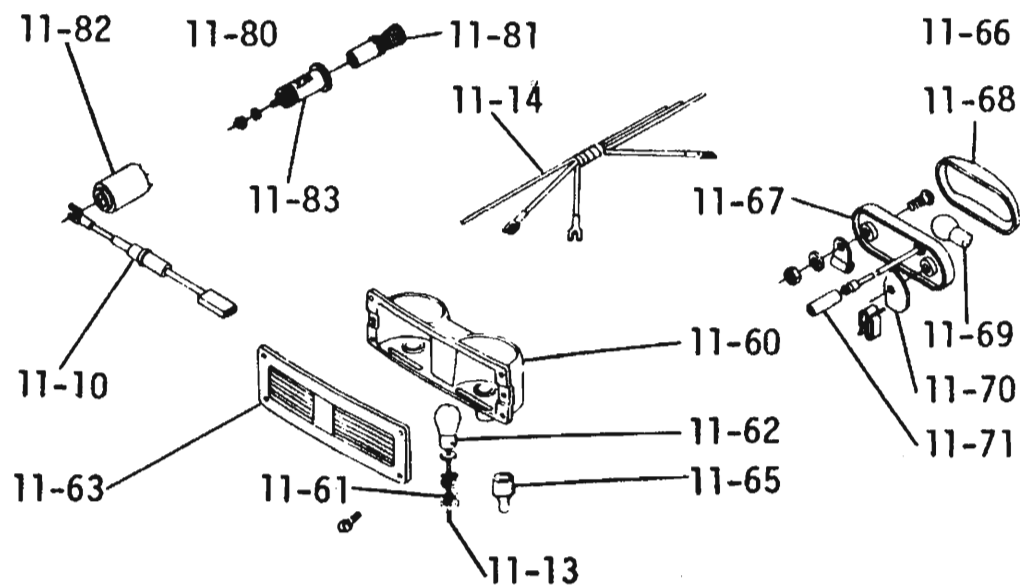
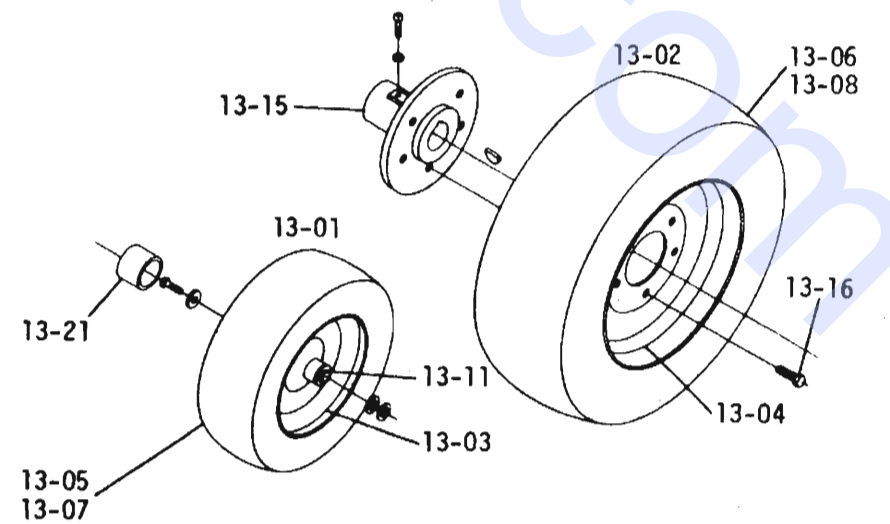


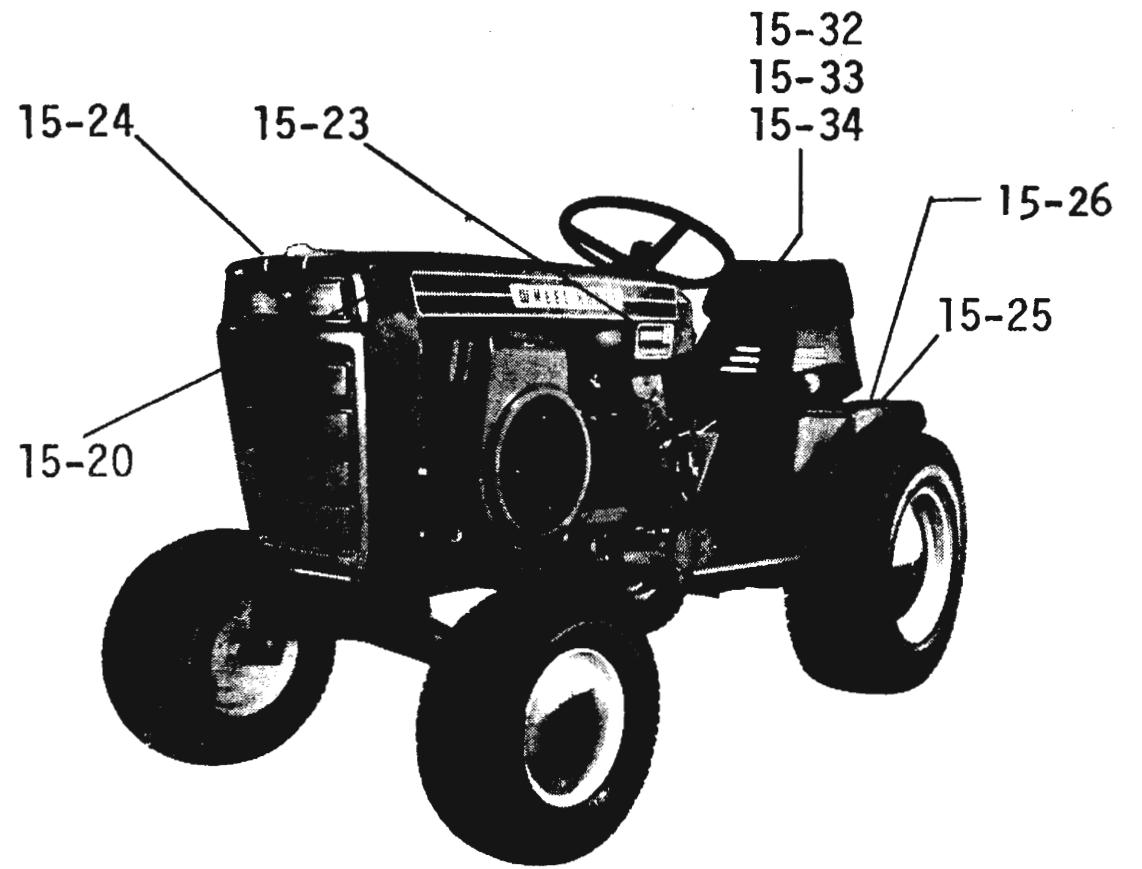
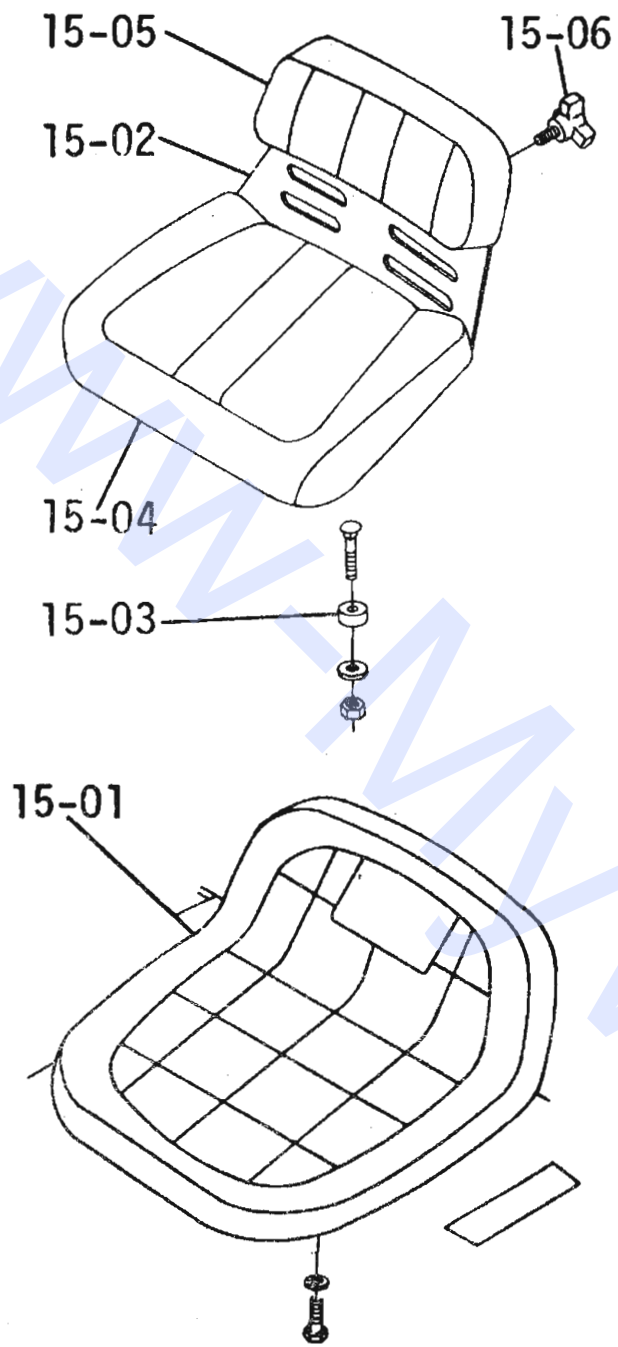
Plate 13.1

WHEELS AND TIRES

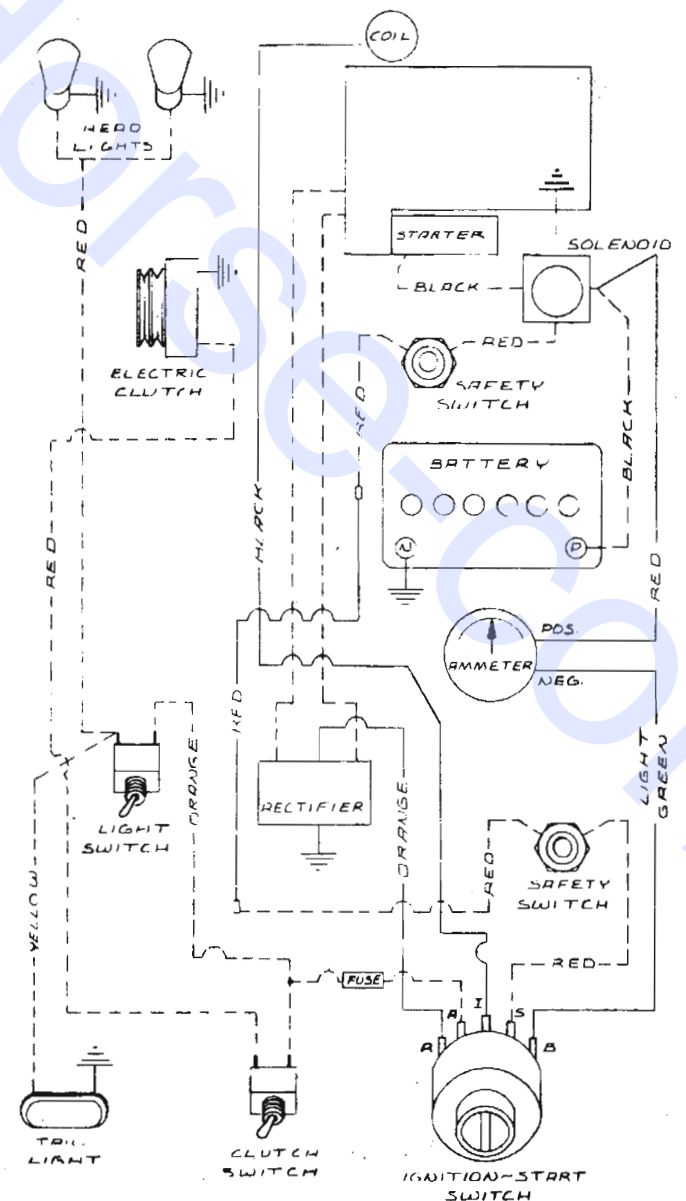
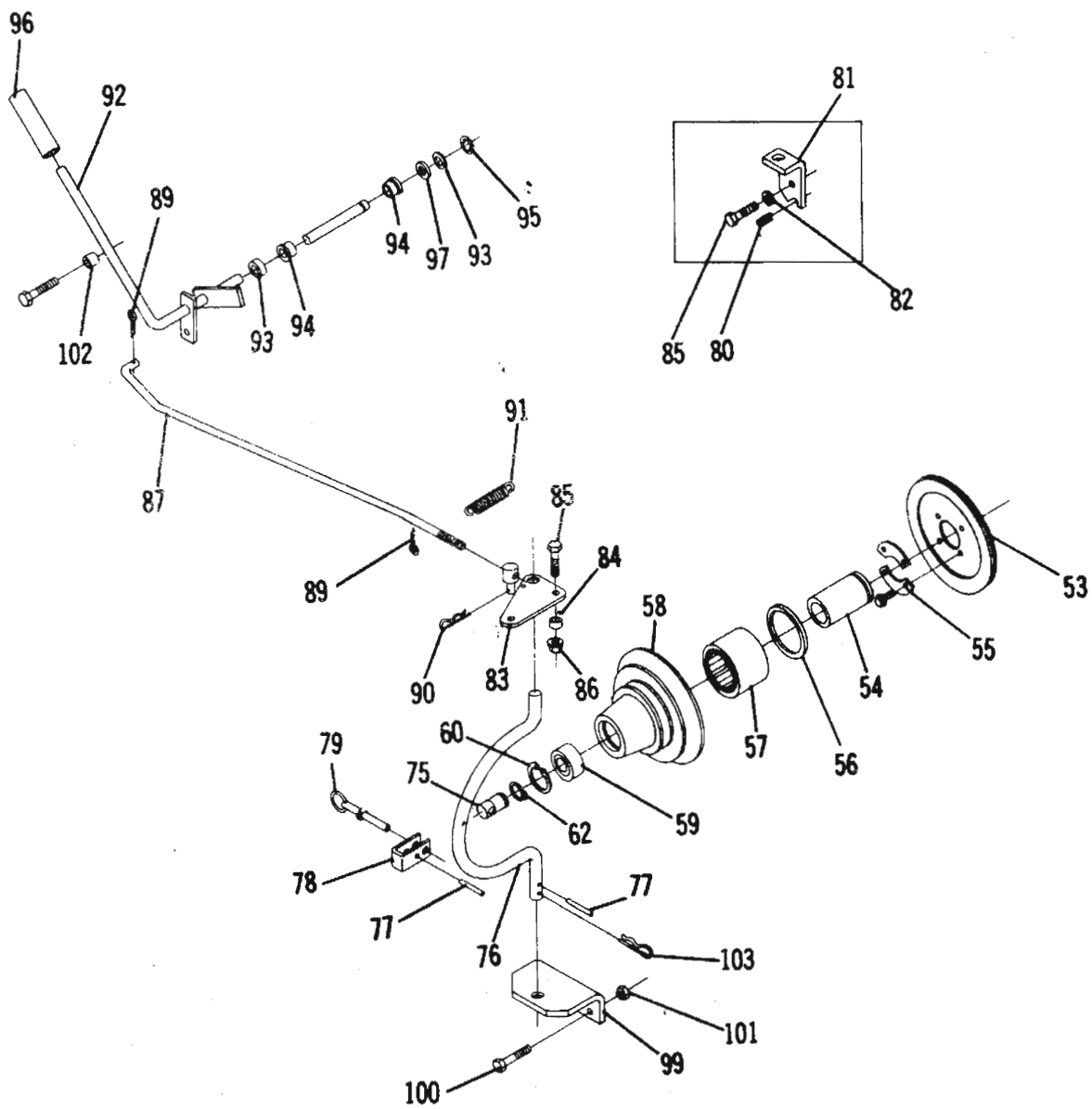




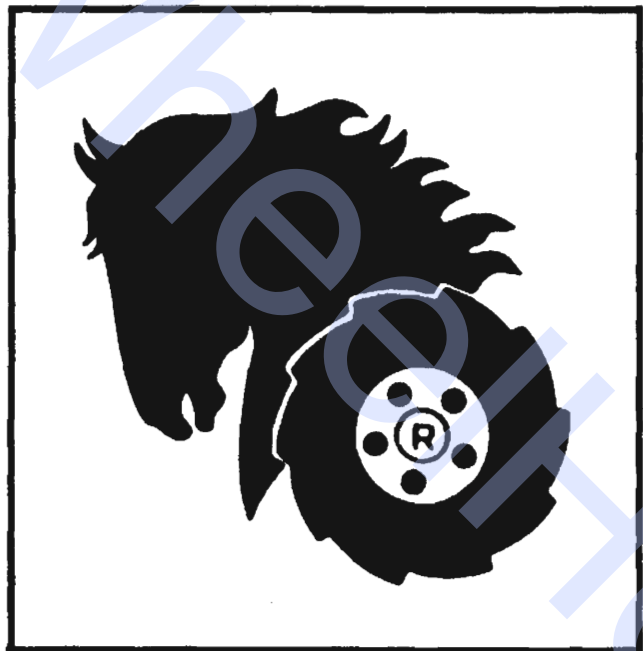
**Plate 15.1 SEATS, DECALS, MISC. TRIM**



**Plate 14.3 P. T. O. CLUTCH**



www-mywheelhorse.com



**WHEEL-HORSE PRODUCTS, INC.**

**South Bend, Indiana 46614**