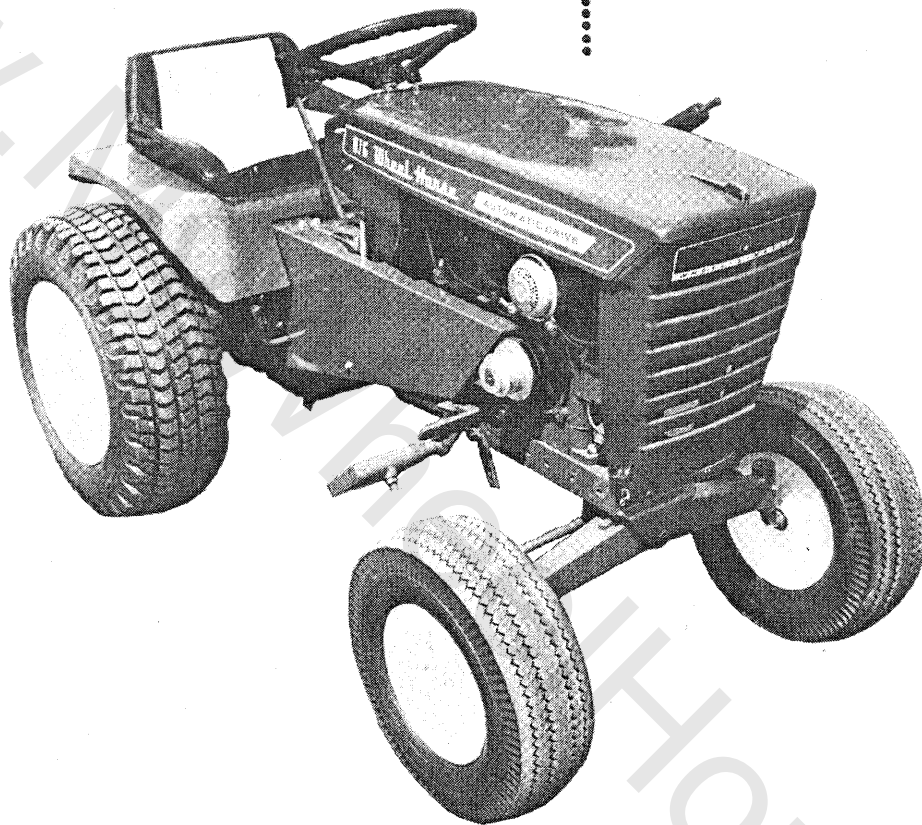


Wheel Horse®

LAWN AND GARDEN TRACTORS

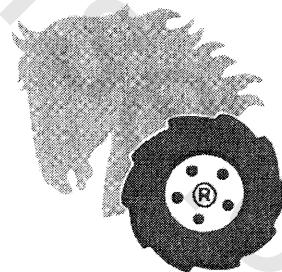
model
876



**OPERATION AND
SERVICE MANUAL
WITH PARTS LIST**

WHEEL-HORSE PRODUCTS, INC.

SOUTH BEND, IND.



ASSEMBLY

A. The Tractor is shipped in one carton with the rear wheel and tire assembly, Part No. 5432, in a separate carton.

B. **Open tractor unit first.** Remove all parts from carton, and place in a convenient arrangement on a clean, level surface.

C. Place the steering wheel, Part No. 4983 on the steering shaft, Part No. 5335 aligning the holes and secure with roll in pin, Part No. 933213.

WARRANTY

We warrant WHEEL HORSE PRODUCTS for ONE YEAR from date of purchase against defective parts and workmanship. We will replace, free of charge, any defective part if returned to the factory PREPAID*. Wheel Horse Products, Inc., reserves the right to make changes or improvements upon its products without imposing any obligation upon itself to install the same upon its products that have been previously manufactured.

The engine and battery carry a separate warranty by the manufacturer. **FOR ENGINE OR BATTERY SERVICE, CONTACT YOUR LOCAL ENGINE OR BATTERY SERVICE HEADQUARTERS.**

*All warranty claims, work, shipments, must be handled through your authorized Wheel Horse dealer.

NOTE: 90 Day Warranty for Commercial Use.

BEFORE YOU START

There is **NO OIL** in the crankcase of the engine when shipped from the factory. **OIL . . .** See Engine Manual.

Wheel-a-Matic Transmission: The transmission has been filled with Automatic Transmission fluid at the factory. (This is Type "A" automatic transmission fluid, which is used in automobiles and may be purchased at any service station.)

A. Remove Plug from transmission fill pipe, (located under seat) and insert dipstick, Part No. 6155. (See Fig. 1). Now check level of transmission fluid to make sure transmission is filled to proper level.

B. To enable moving the tractor by hand you must loosen the towing valve. (See **Towing Instructions.**)

Lubricate all grease fittings with a regular pressure gun lubricant every eight to ten hours of operation. Refer to Figures 3 & 4 for the location of grease fittings.

A light machine oil should be used where indicated.

BATTERY

The battery installed in the 876 tractor is a dry charged battery. It is important that you properly prepare this battery to insure good service and long life.

1. Remove vent caps. Remove or destroy any sealing device which may have been used to close or restrict the vent openings.

2. Fill each cell of the battery to the proper level with the battery electrolyte.

NOTE: Temperature of battery and electrolyte at time of filling should be above 60°F. Never fill battery in the vehicle.

3. **BOOST CHARGE:** 15 amps. for 10 minutes or 7 amps. for 30 minutes. Adjust electrolyte level, if necessary, after charge.

4. **Install battery with battery posts toward the rear of tractor.** Start engine. After battery has been in service, add only approved water.

DO NOT ADD ACID.

TIRES

The front tires are 16 x 5.50-8 and should be inflated to 12 pounds of air pressure. **The rear tires are 8 x 12 and should have 8 pounds of air pressure.** The tires can also be filled with ballast if desired. Ordinarily this is not necessary as the weight of the operator will add sufficient weight for adequate traction.

STARTING ENGINE

1. Before starting the engine fill gas tank (located under the hood) with a good grade of regular gas, and open valve on gas tank.

2. Press the foot pedal on the left side of tractor all the way down.

3. Pull throttle lever $\frac{1}{2}$ way out and turn to the right to lock it in position. **Note:** The throttle control has a locking device. Turn the throttle control to the left to unlock, adjust to the desired position and turn to the right to lock.

4. Pull choke lever all the way out to choke engine. If engine is warm and has been running, choking may not be necessary.

5. The Model 876 tractor has a key starter-switch. Turn key all the way to right to start engine.

6. When engine starts push choke in to off position and regulate throttle control by turning to the left to unlock and push in or out to desired speed.

7. When starting tractor in cold weather set the park brake. This releases the drive belt, and the engine does not have to turn the transmission.

PARKING BRAKE

The parking brake is located on the right side of the tractor. (See Figure 3.) To set the parking brake push down on the handle. Brake should always be

set when dismounting from tractor, especially on a grade, otherwise the tractor may creep. When brake is set the drive belt is automatically released. **Caution: Do not set parking brake while tractor is in motion as this may result in damage to the transmission.** Always depress foot pedal (on left side) before releasing parking brake.

ATTACHING TOOLS

Complete information on the assembly, mounting, operation, and service of the attaching tools will be provided with each attachment.

All drawn implements attach in seconds. Simply lift the tractor hitch pin, insert the tongue and replace pin.

All power implements will use the attachment clutch pedal located on the right side of the tractor.

NOTE: The idler bracket assembly furnished with the 36" Rotary Mower, and 42" Sickle Bar, will not work on this tractor. (Order Kit Number 6051).

OPERATING INSTRUCTIONS

The speed, direction and braking are controlled by the control handle located on the right side.

- To go Forward push the control handle Forward.
- To go Backward pull the control handle Back.
- To Stop put control handle in Neutral position.
- You may also Stop the tractor at anytime by depressing the foot pedal on the left side.

The tractor speed is affected instantly by the movement of the control handle. For safest operation the control handle should not be moved too rapidly, especially on grades.

TOWING INSTRUCTIONS

This tractor should never be towed or pushed without first releasing the towing valve.

A. The towing valve is located on the back surface of the pump (See Figure 1.) To push or tow open the towing valve, using a $\frac{1}{2}$ " wrench. Be sure to retighten the valve gently, but securely, before operating tractor. **NOTE: This is a needle valve and must not be over tightened.**

B. CAUTION: Do not tow for long distance or over a speed of seven (7) miles per hour.

TRANSMISSION CARE

Change oil and oil filter every two years or every 500 hours of operation. The transmission oil capacity is approximately four (4) quarts.

- Use only type "A" automatic transmission oil.
- Check oil periodically and maintain at proper level as indicated on dipstick.

CARE OF TRACTOR

1. Keep tractor greased and oiled regularly. Refer to Figure 3 and 4 for the location of grease fittings. Check transmission and engine case oil levels.

2. Keep engine air cleaner clean. This will add to engine life.

3. Keep tires properly inflated. See previous instructions.

4. Keep tractor covered and in a dry place when not in use.

5. Keep grass and dirt out of engine cowlings as these will stop the flow of air and decrease engine life.

6. Keep grass and dirt off transmission and fan screen.

7. Battery — Check liquid after every 40 hours of use. **NOTE:** If tractor has been in storage it may be necessary to recharge battery.

8. Control Handle Friction Adjustment:

The control handle is friction loaded so it will hold at any desired speed. If the handle does not stay where it is set during operation, the friction may be increased by tightening the two screws that put pressure on the nylon cam (See Figure 2). **CAUTION:** Too much friction will cause erratic action on the control handle. **Do Not Lubricate Nylon Cam.**

9. Neutral Adjustment:

A. If tractor should creep while in neutral position this can be corrected. To check for creep place tractor on level surface with engine running, and depress foot pedal. Creep on slopes is normal and cannot be entirely eliminated.

B. To make neutral adjustment (See Figure 2).

1. Block rear wheels off ground.

2. Remove instruction plate, (located in front of the seat) by removing the four screws which hold it.

3. Loosen set screw in arm with a allen wrench (See Figure 2).

4. Depress foot pedal on left side.

5. With tractor engine running and park brake disengaged, insert short screwdriver through hole in nylon cam and rotate the eccentric cam pin until rear wheels stop. Now retighten set screw in arm and replace plate.

6. **NOTE:** The lobe on the eccentric pin must be upward for proper operation.

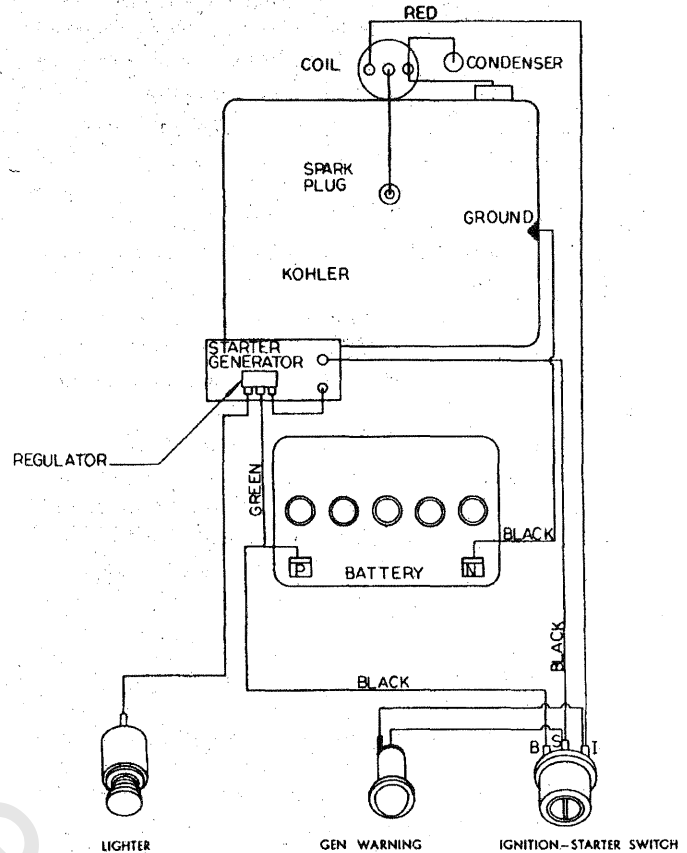
7. When replacing belts be sure to purchase genuine Wheel Horse Belts, as these belts are specifically designed for each application. **NOTE:** Make sure all pulleys are in line.

8. Your tractor is only as good as the service you give it. See your Wheel Horse Dealer for a thorough check-up after each season of use.

SAFETY SUGGESTIONS

Recommended by Outdoor Power Equipment Institute

1. Know the controls and how to stop quickly — read the owners manual.
2. Do not allow children to operate machine; nor adults to operate it without proper instruction.
3. Clear work area of objects which might be picked up and thrown.
4. Disengage all clutches and shift into neutral before starting motor. Keep hands, feet, and clothing away from power driven parts.
5. Do not carry passengers. Keep children and pets a safe distance away.
6. Never direct discharge of any material toward bystanders, nor allow anyone near machine while in operation.
7. Disengage power to attachment (s) and stop motor before leaving operator position.
8. Take precautions when leaving machine unattended (to avoid accidental starting, rolling away, accidental dropping of any attachment, etc.)
9. Disengage power to any attachment whenever it is not in use, or when traveling from one work area to another.
10. Stay alert for holes and other hidden hazards. Know what is behind you, before backing up.
11. Beware of steep slopes; reduce speed on all side slopes and sharp turns, to prevent tipping or losing control.
12. Don't stop or start suddenly when going uphill or downhill.
13. Use care when pulling loads or using heavy equipment. Refer to owners manual.
14. Watch out for traffic when near roadways.
15. Handle gasoline with care — it is highly flammable.
 - a. Use approved gasoline container.
 - b. Never add gasoline to a running motor — fill tank out of doors wipe up spilled gasoline.
 - c. Replace gasoline cap securely.
 - d. Open doors if motor is run in garage — exhaust gases are dangerous.
17. Keep machine in good operating condition and keep safety devices in place. Use guards as instructed in owner's manual.



WIRING FOR 876

SPECIFICATIONS

(Specifications subject to change without notice.)

Length Overall	61 inches
Wheelbase	41¼ inches
Width Overall	36 inches
Width at Front Wheels	33½ inches
Height	37 inches
Height to Top of Hood	33½ inches
Approx. Shipping Weight 8 H.P.	530 lbs.
Crop Clearance	7¼ inches
Frame Clearance	13½ inches
Engine (4-cycle, single cylinder, air cooled) Electric Start	8 H.P.
Engine Oil Capacity	8 H.P. 2½ pints
Fuel Capacity	6 quarts
Tires (front) 5.50-8 Pneumatic (16" wheel dia.)	
Tires (rear) Terra-Type 8.00 x 12" Pneumatic (22½" wheel dia.)	
Speeds — Infinitely Variable Forward — 0 to 7 M.P.H.	
Reverse — 0 to 3½ M.P.H.	
Turning radius (to outside of outside wheel)	6'

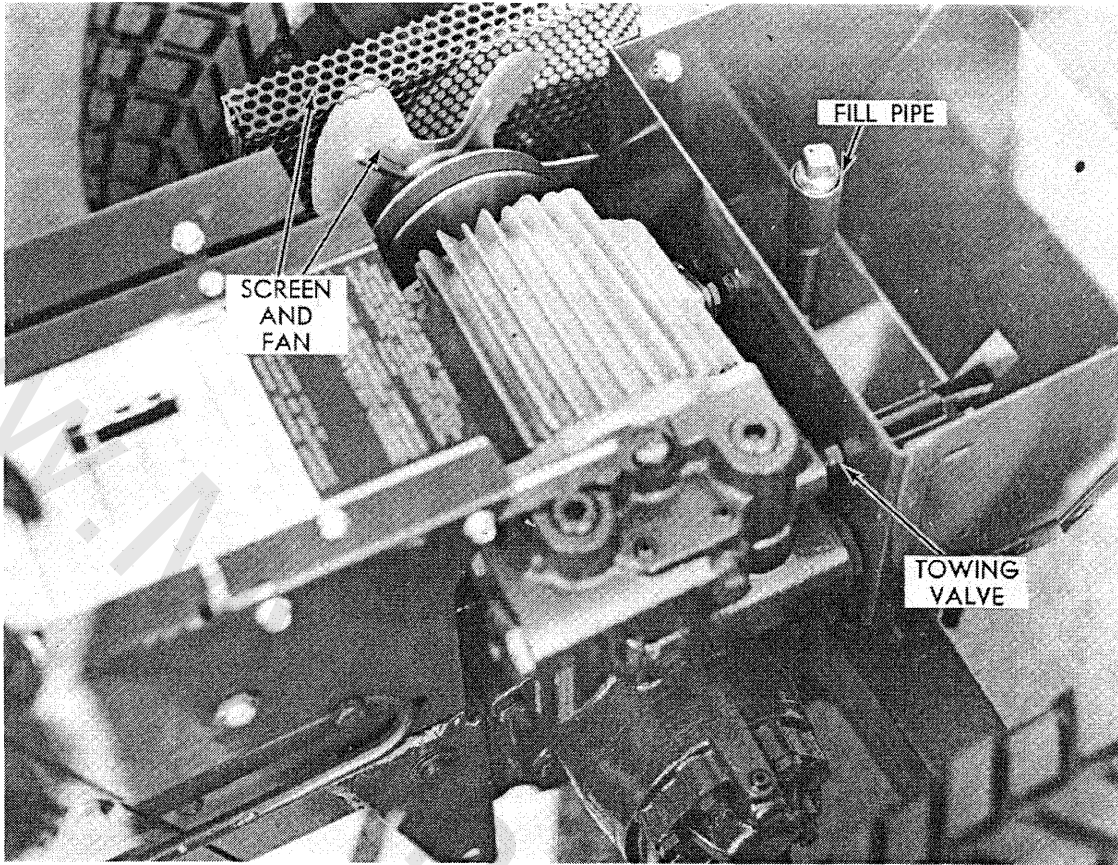


Figure 1

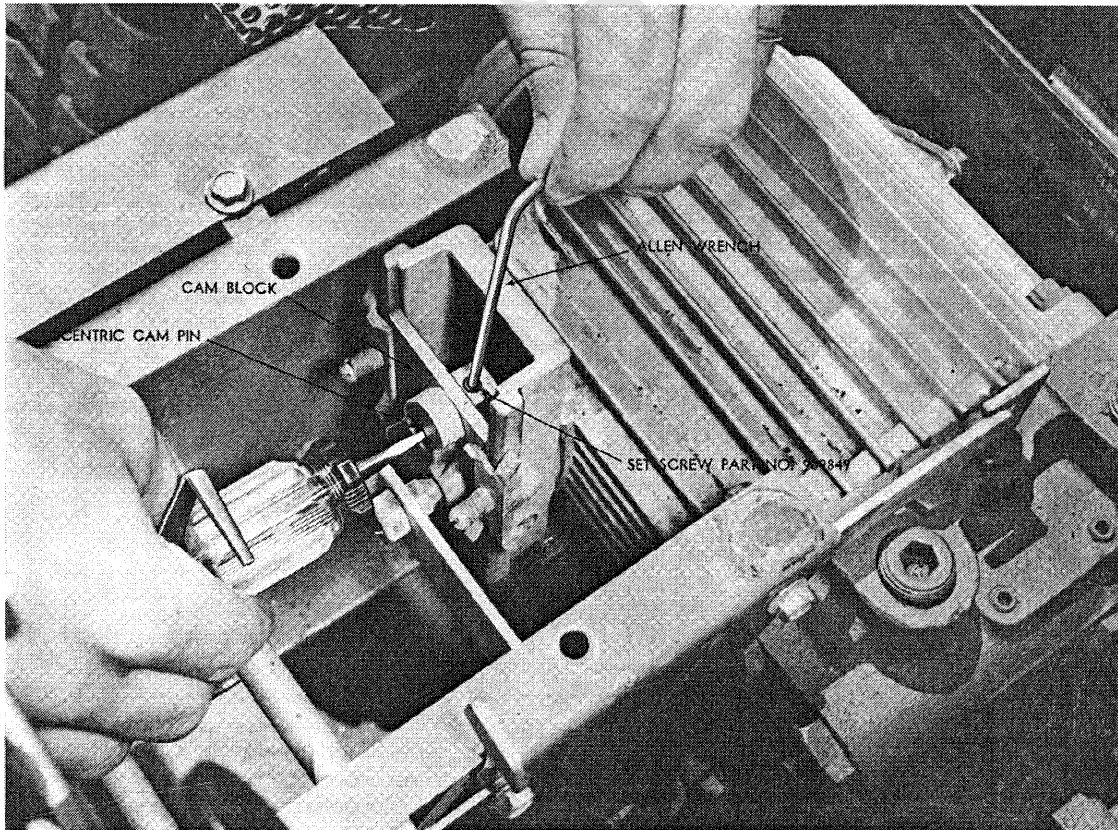


Figure 2

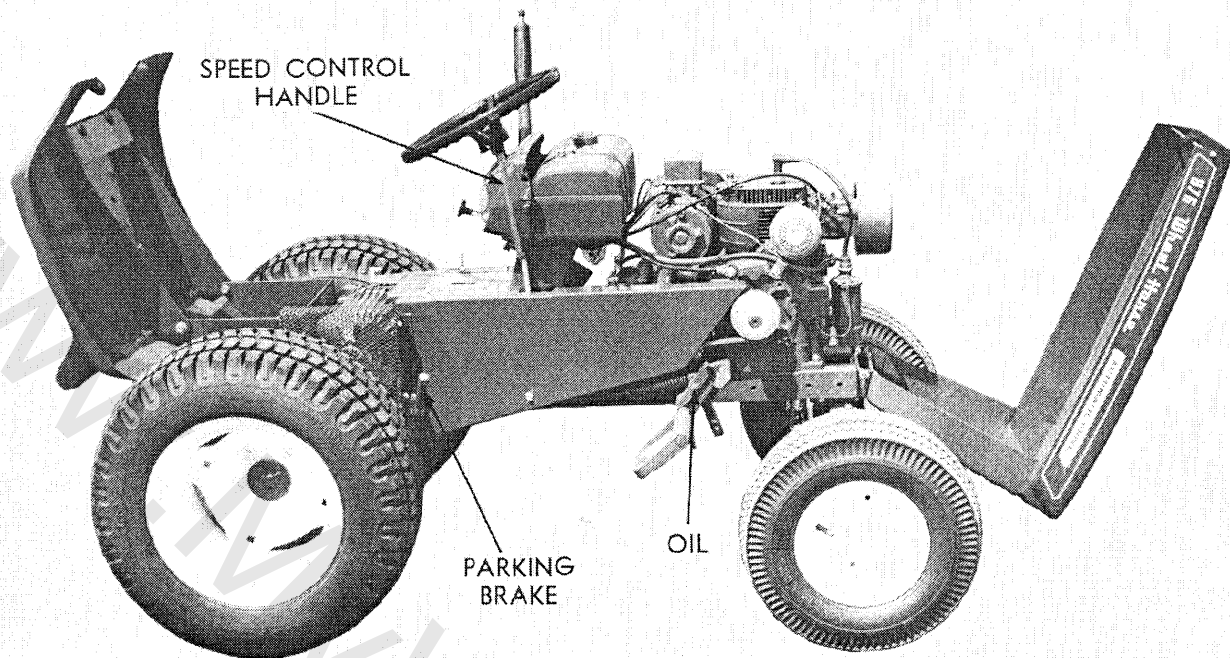


Figure 3

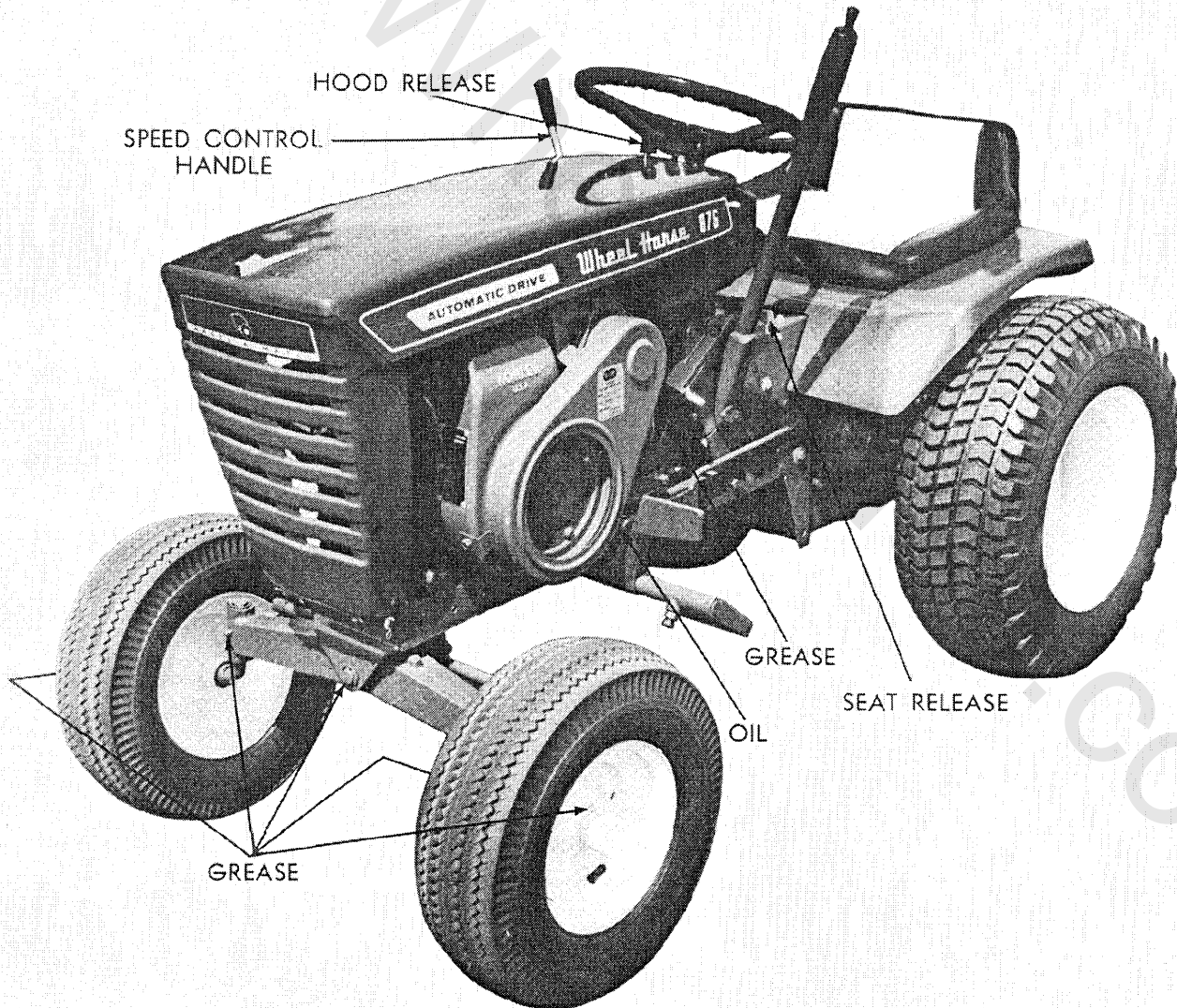
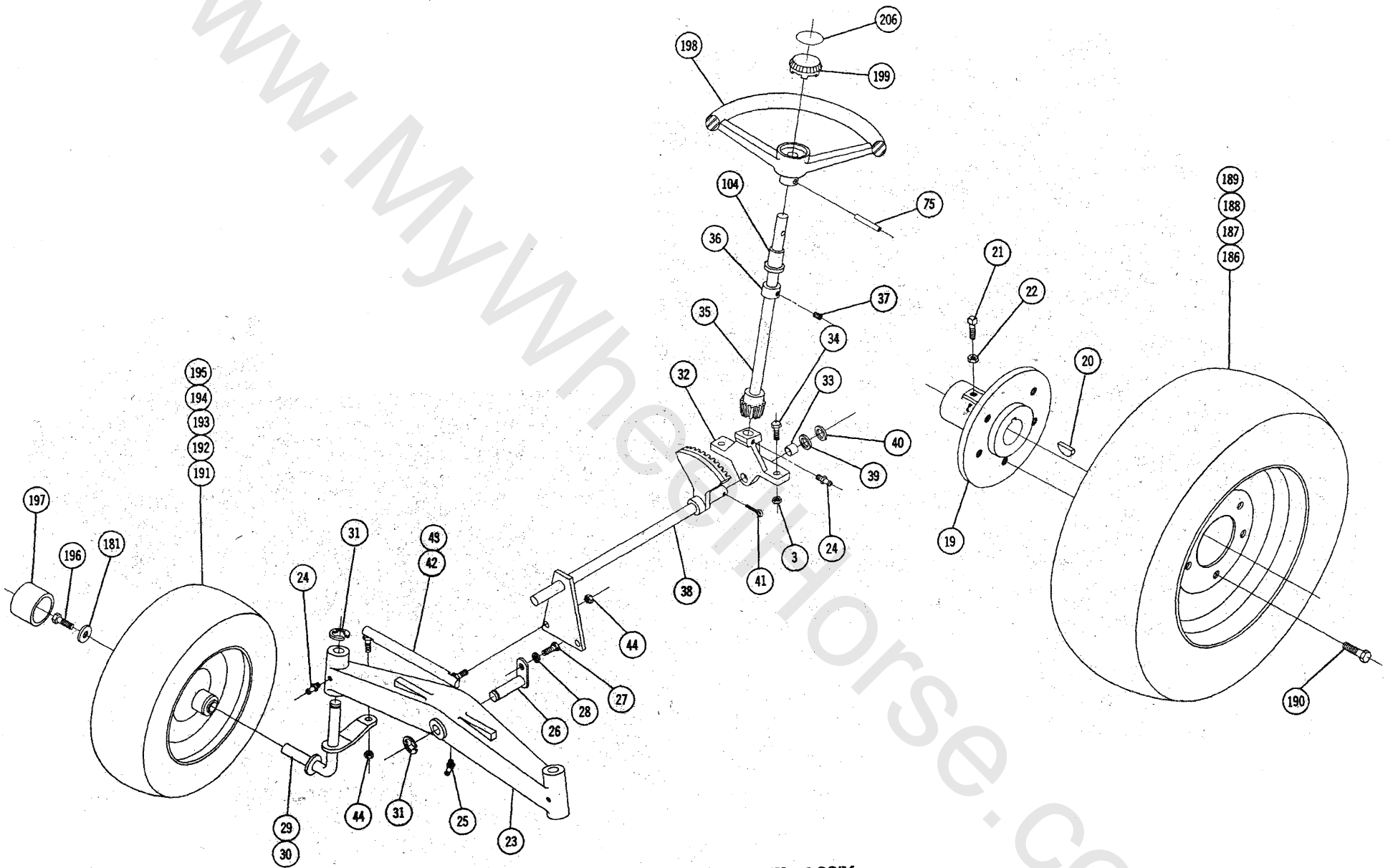
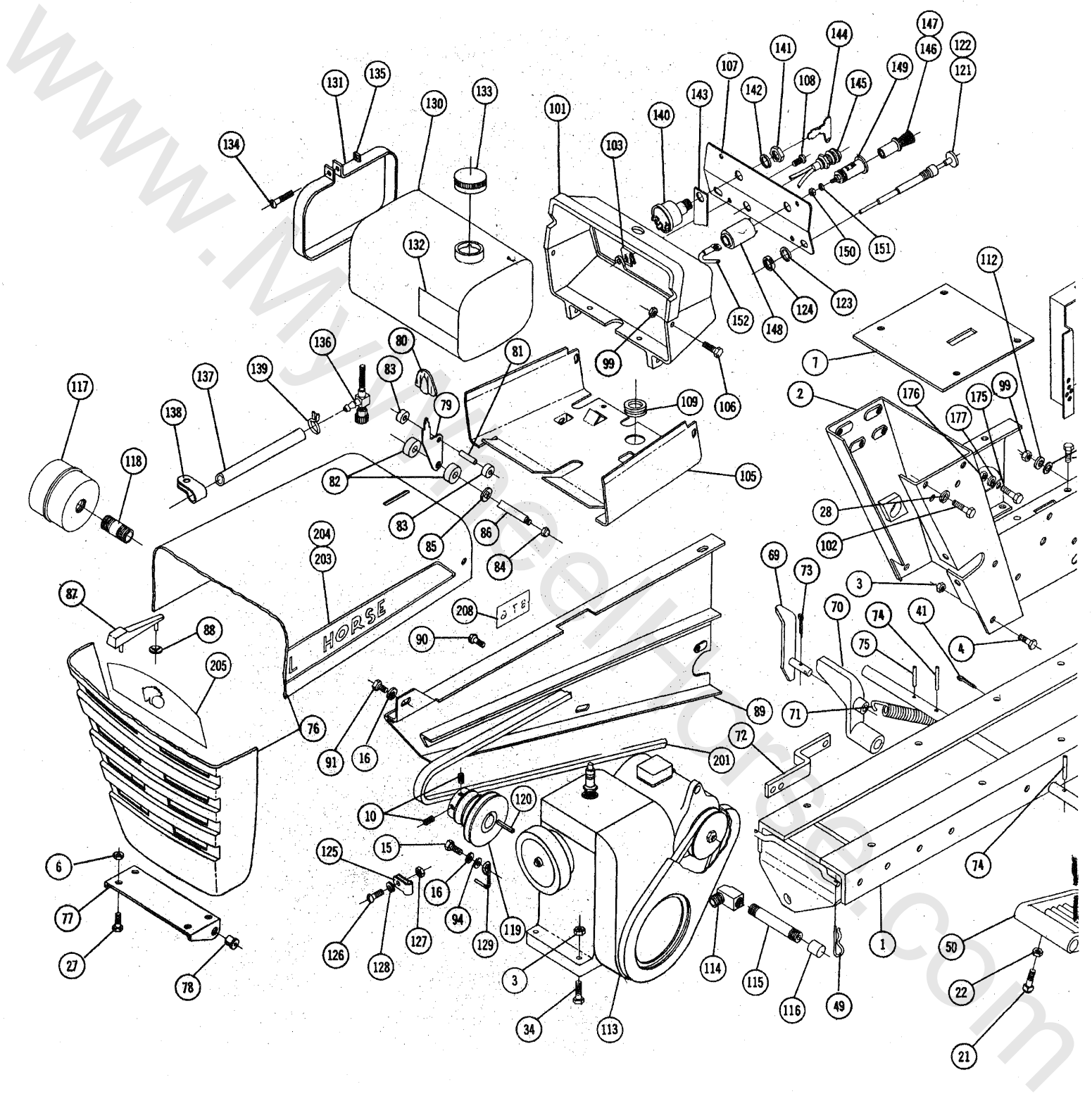


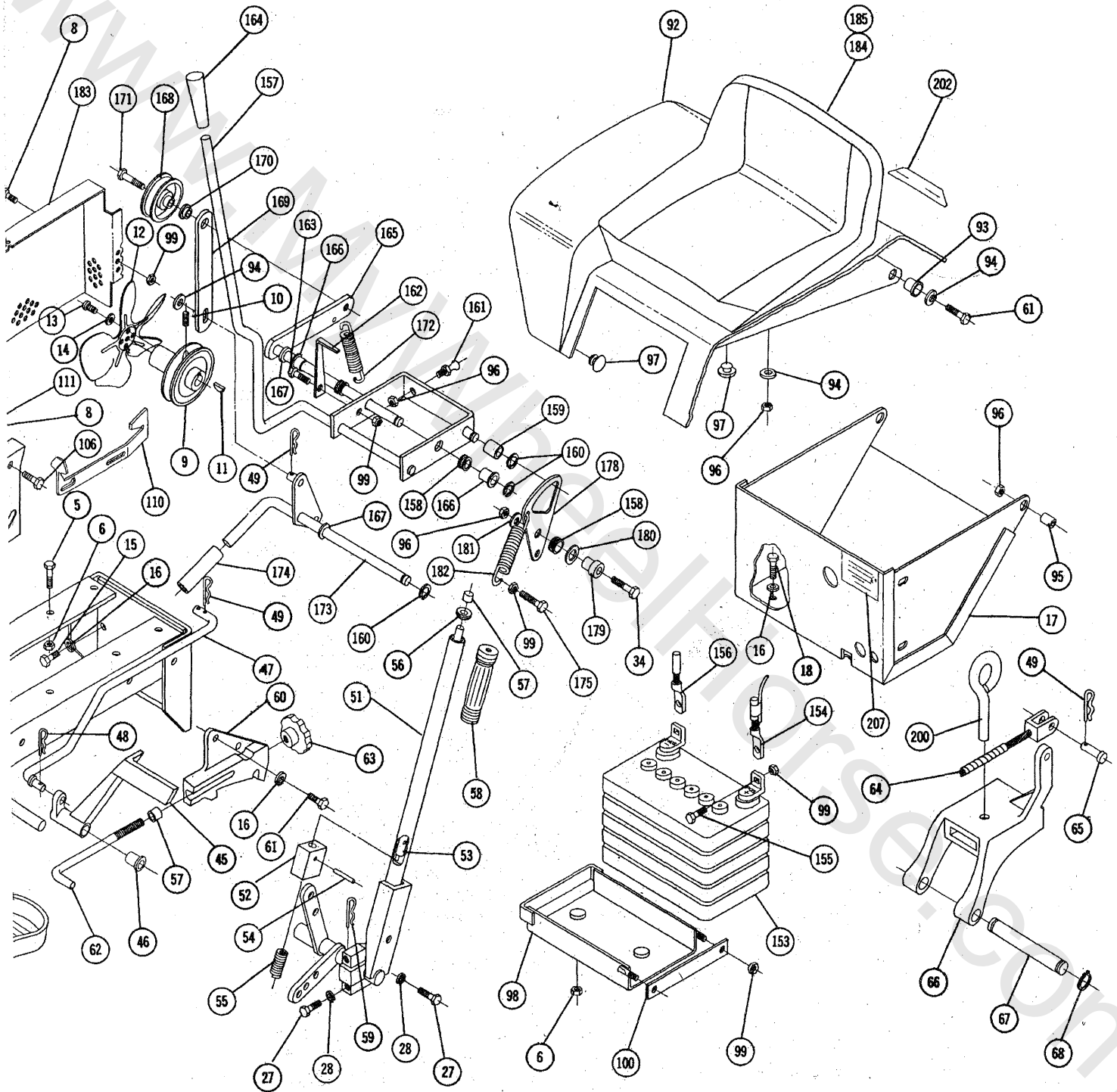
Figure 4



STEERING & WHEEL ASS'Y.



MAIN FRAME, FEND



RANGE HOOD ASS'Y.

PARTS LIST for 876 LAWN and GARDEN TRACTOR

Except Transmission — see Transmission break down and Parts List

When ordering parts always list Part No. and name of part.

Ref. No.	Part No.	Description	No. Req'd.	Ref. No.	Part No.	Description	No. Req'd.
1	6102	Ass'y. Frame	1	53	4439	Rod	1
2	6104	Ass'y. Hoodstand	1	54	933168	Roll Pin $\frac{5}{32} \times \frac{1}{16}$	1
3	915663-4	Nut — Elastic Stop $\frac{3}{8}$ -16	8	55	3624	Spring	1
4	908034-4	Bolt — Hex. $\frac{3}{8}$ — 16 x 1	2	56	3578	Guide — Plunger	1
5	908017-4	Bolt Hex. $\frac{5}{16}$ -18 x $\frac{3}{4}$	4	57	3680	Cap	2
6	915112-6	Nut — Nyllok $\frac{3}{8}$ -18	10	58	1000	Grip — Handle	1
7	6105	Ass'y. Cover Plate	1	59	933506-4	Hair Pin Cotter	1
8	960151-4	Bolt — Whizlock $\frac{1}{4}$ -20 x $\frac{1}{2}$	7	60	5640	Quadrant	1
9	6109	Pulley	1	61	908032-4	Bolt Hex. $\frac{3}{8}$ -16 x $\frac{3}{4}$	4
10	909862-5	Set Screw $\frac{5}{16}$ -18 x $\frac{5}{16}$ Nyllok	3	62	2179	Rod — Height Control	1
11	937010	Key #16 Woodruff $\frac{3}{32} \times \frac{5}{8}$	1	63	5280	Knob — Height Control	1
12	6108	Fan	1	64	3931	Ass'y. Cable — Lift	1
13	908998-4	Screw — Round Head #8-32 x $\frac{3}{8}$	4	65	932120-4	Pin — Clevis $\frac{1}{4}$ Dia.	2
14	920078-4	Lockwasher #8	4	66	3926	Hitch	1
15	908033-4	Bolt Hex. $\frac{3}{8}$ -16 x $\frac{3}{8}$	5	67	3988	Pin	1
16	920083-4	Lockwasher $\frac{3}{8}$ Dia.	12	68	936125	Snap Ring $\frac{3}{4}$ Shaft	2
17	6110	Ass'y. Tool Box	1	69	6398	Ass'y. Trip Lever	1
18	908032-4	Bolt Hex. $\frac{3}{8}$ -16 x $\frac{3}{4}$	4	70	4239	Pedal — Attach Clutch	1
19	4996	Hub — Wheel — Five Bolt	2	71	5714	Spring	1
20	937022	Key #15 Woodruff	2	72	5416	Link	1
21	909554	Set Screw Square Head $\frac{3}{8}$ -16 x 1	4	73	932025-4	Cotter Pin $\frac{5}{32} \times 1$	2
22	915113-4	Nut Hex. $\frac{3}{8}$ -16	4	74	933188	Roll Pin $\frac{3}{16} \times 1$	2
23	5638	Axle — Front	1	75	933213	Roll Pin $\frac{1}{4} \times 1$	2
24	1030	Fitting — Grease	3	76	5465	Ass'y. Hood	1
25	1481	Fitting — Grease 45°	1	77	5455	Bracket — Hood Hinge	1
26	6216	Ass'y. Pin & Plate	1	78	5457	Bushing — Nylon	2
27	908015-4	Bolt Hex. $\frac{5}{16}$ -18 x $\frac{1}{2}$	8	79	5467	Lever — Hood Latch	1
28	920082-4	Lockwasher $\frac{3}{16}$	8	80	5469	Knob	1
29	5630	Ass'y. Spindle R.H.	1	81	933182	Roll Pin $\frac{3}{16} \times \frac{3}{8}$	1
30	5631	Ass'y. Spindle L.H.	1	82	5505	Roller — Rubber	2
31	5618	E-Ring $\frac{3}{4}$ Dia.	3	83	5468	Roller — Steel	2
32	6396	Support — Steering	1	84	915902-4	Nut — Low Crown #10-24	2
33	6397	Bushing	1	85	5466	Speed Nut $\frac{1}{4}$ Dia. Push On	2
34	908035-4	Bolt — Hex $\frac{3}{8}$ -16 x $1\frac{1}{4}$	7	86	5522	Rod — Hood Latch	1
35	6567	Ass'y. Steering Shaft — Upper	1	87	5438	Ornament — Hood	1
36	1085	Collar	1	88	5437	Speednut $\frac{1}{8}$ Dia. Push On	2
37	909848-5	Set Screw $\frac{1}{4}$ -20 x $\frac{1}{4}$ Nyllok	1	89	6118	Ass'y. Belt Guard	1
38	6565	Ass'y. Steering Shaft — Lower	1	90	960151-4	Bolt — Whizlock $\frac{1}{4}$ -20 x $\frac{1}{2}$	2
39	5210	Washer — Shim (.015)	1	91	908030-4	Bolt — Hex $\frac{3}{8}$ -16 x $\frac{1}{2}$	1
40	1278	Washer — Shim (.050)	1	92	6120	Ass'y. Fender	1
41	932035-4	Cotter Pin $\frac{3}{16} \times 1\frac{1}{4}$	2	93	5666	Bushing Nylon	2
42	5628	Ass'y. Ball Joint R.H.	1	94	920009-4	Washer	6
43	5629	Ass'y. Ball Joint L.H.	1	95	4937	Spacer	2
44	915002-6	Nut — Nyllok $\frac{3}{8}$ -24	4	96	915113-6	Nut — Nyllok $\frac{3}{8}$ -16	6
45	6403	Pedal — Clutch	1	97	5667	Bumper — Rubber	4
46	6254	Bushing	2	98	4953	Ass'y. Battery Box	1
47	6113	Rod Brake	1	99	915111-6	Nut — Nyllok $\frac{1}{4}$ -20	14
48	933504-4	Hair Pin Cotter	1	100	4958	Clamp — Battery	1
49	933503-4	Hair Pin Cotter	7	101	5450	Housing — Control Panel	1
50	4421	Foot Rest	2	102	908016-4	Bolt Hex. $\frac{5}{16}$ -18 x $\frac{3}{8}$	4
51	2266	Ass'y. Lift Lever	1	103	5442	Speed Nut #10-16	4
52	4438	Plunger	1	104	5409	Bushing — Nylon	1

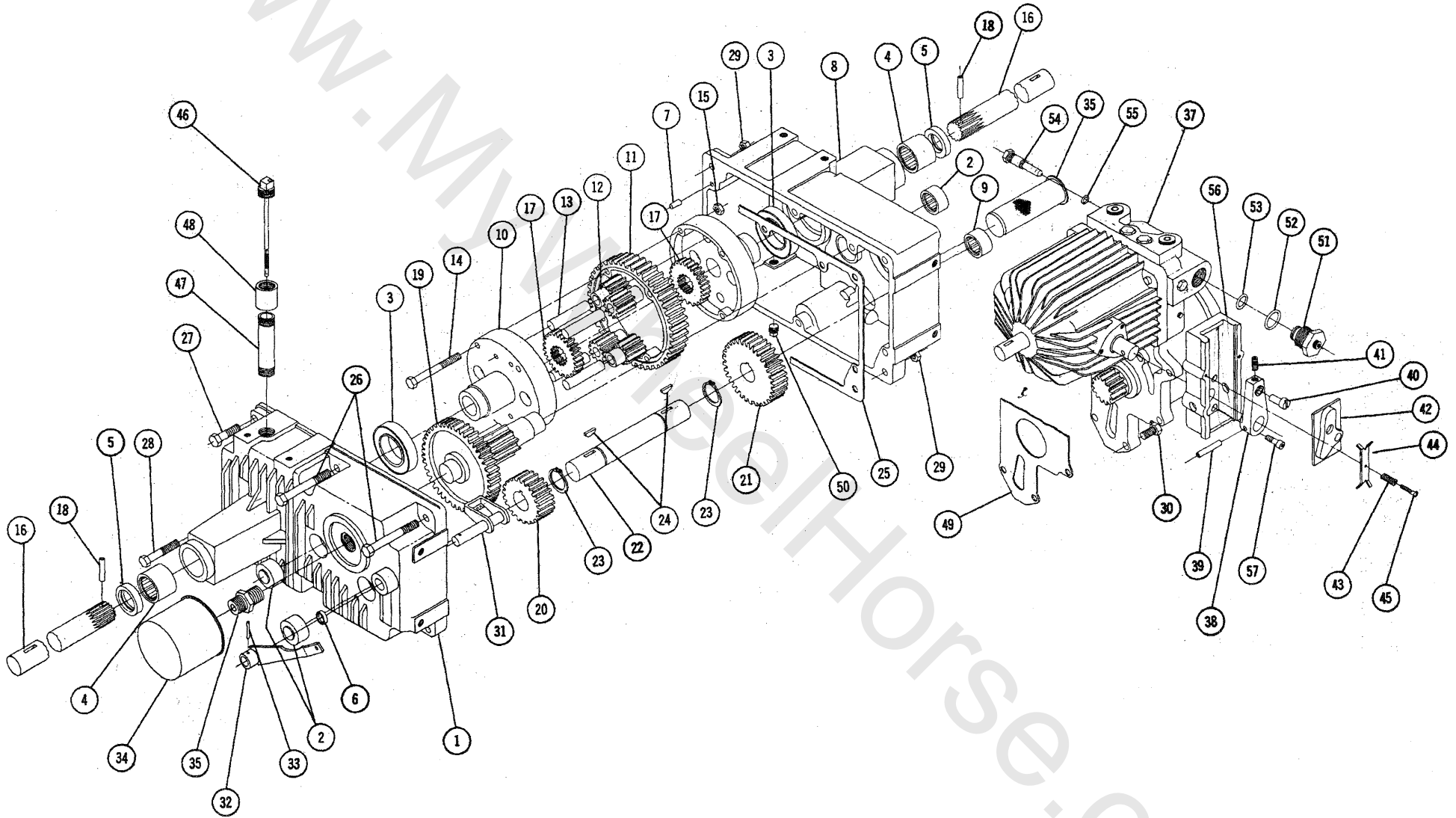
PARTS LIST for 876 LAWN and GARDEN TRACTOR

Except Transmission — see Transmission break down and Parts List

When ordering parts always list Part No. and name of part.

Ref. No.	Part No.	Description	No. Req'd.	Ref. No.	Part No.	Description	No. Req'd.
105	5458	Support — Fuel Tank	1	157	6123	Ass'y. Cam Control Arm	1
106	960152-4	Bolt Whizlock $\frac{1}{4}$ -20 x $\frac{5}{8}$	6	158	5983	Bushing — Nylon $\frac{1}{2}$ x .140	3
107	6121	Panel — Complete — Dash	1	159	MW-2195	Bushing Bronze	1
108	926308-4	Screw — Self Tap #10-16 Type	4	160	5701	"E" — Ring $\frac{1}{2}$ Shaft	3
109	5439	Grommet — Rubber	1	161	6127	Pin — Cam Block	1
110	6402	Latch — Fender	1	162	6128	Indicator — Speed	1
111	920007-4	Washer $\frac{1}{4}$	2	163	908001-4	Bolt Hex. $\frac{1}{4}$ -20 x $\frac{1}{2}$	1
112	MW-4404	Spring Washer $\frac{3}{32}$ I.D.	2	164	6129	Handle — Plastic	1
113	5151	Ass'y. Engine 8 H.P. Kohler	1	165	6130	Ass'y. Arm & Rod — Cam Pivot	1
114	5222	Elbow — 90° Special	1	166	5666	Bushing	2
115	5223	Nipple — $\frac{3}{8}$ Pipe x $3\frac{1}{2}$	1	167	920011-4	Washer $\frac{1}{2}$ SAE	2
116	5224	Cap $\frac{3}{8}$ Pipe	1	168	MW-8821	Pulley — Idler	1
117	5429	Muffler	1	169	6133	Link — Brake	1
118	943367-4	Nipple 1" Pipe x $2\frac{1}{2}$	1	170	6134	Spacer — Link	1
119	6122	Pulley — Engine	1	171	911400	Bolt — Special $\frac{3}{8}$ -16 x $1\frac{1}{2}$	1
120	1349	Key $\frac{1}{4}$ x $\frac{1}{4}$ x $1\frac{1}{2}$	1	172	6135	Spring — Brake	1
121	5170	Ass'y. Control — Choke	1	173	6136	Ass'y. Lever — Brake	1
122	5171	Ass'y. Control Throttle	1	174	6141	Tube — Handle Grip	1
123	920127-4	Lockwasher $\frac{3}{16}$ Shakeproof	2	175	908003-4	Bolt — Hex. $\frac{1}{4}$ -20 x $\frac{3}{4}$	2
124	1364	Nut — Round $\frac{3}{16}$ -18	2	176	915234-4	Nut Jam $\frac{1}{4}$ -20	1
125	1277	Clip	1	177	920081-4	Lockwasher $\frac{1}{4}$	1
126	909000-4	Bolt — Round Head #8-32 x $\frac{1}{2}$	1	178	6142	Plate — Cam — Neutral	1
127	915562-4	Nut — Hex. #8-32	1	179	6143	Spacer Cam Plate	1
128	920078-4	Lockwasher #8	1	180	3765	Washer $\frac{1}{2}$ Dia. Special	1
129	6574	Retainer — Belt	1	181	2844	Washer $\frac{3}{8}$ Dia. Special	3
130	5417	Tank — Fuel	1	182	1230	Spring	1
131	5459	Clamp — Tank	1	183	6150	Shield — Fan	1
132	5464	Tape — Insulator	1	184	5557	Ass'y. Seat Base	1
133	5186	Cap — Fuel Tank	1	185	5556	Cushion Seat	1
134	909059-4	Bolt Round Head $\frac{1}{4}$ -20 x $1\frac{1}{4}$	1	186	5432	Ass'y. Wheel & Tire	2
135	915182-4	Nut	1	187	5433	Wheel 12 x 7 JA	2
136	4941	Ass'y. Filter & Valve	1	188	5434	Tire 8 x 12 Lawn & Garden	2
137	1796	Hose Fuel	1	189	5435	Valve	2
138	4256	Clip Hose	1	190	1004	Lug Bolt — Wheel $\frac{7}{16}$ -20	10
139	950153	Clamp $\frac{7}{16}$ Dia. Corbin	1	191	5637	Ass'y. Wheel Tire & Tube	2
140	4988	Ass'y. Switch — Ignition	1	192	5635	Wheel	2
141	4882	Nut Hex. Special $\frac{5}{8}$ -32	1	193	4999	Bearing — Ball	4
142	4881	Lockwasher $\frac{5}{8}$ Dia.	1	194	5636	Tire 16 x 5.50-8	2
143	5451	Insulator — Switch	1	195	5512	Tube	2
144	4989	Key — Ignition	1	196	908033-6	Bolt Hex. Nylok $\frac{3}{8}$ -16 x $\frac{7}{8}$	2
145	5423	Ass'y. Lamp — Generator	1	197	2816	Hub Cap	2
146	5480	Ass'y. Cigar Lighter — Complete	1	198	4983	Steering Wheel	1
147	5481	Ass'y. Knob & Plug	1	199	2897	Insert	1
148	5483	Shell	1	200	1813	Tool Pin	1
149	5482	Ass'y. Socket	1	201	6146	"V" Belt — Drive	1
150	915562	Nut #8-32 Brass	2	202	5604	Decal — Attachment	1
151	920078-4	Lockwasher #8	1	203	6556	Decal — Hood Trim R.H.	1
152	5484	Ass'y. Wire	1	204	6557	Decal — Hood Trim L.H.	1
153	3653	Battery	1	205	6555	Decal — Grille	1
154	5445	Wiring Harness	1	206	4581	Decal — Steering Wheel	1
155	908002-4	Bolt Hex. $\frac{1}{4}$ -20 x $\frac{3}{8}$	2	207	6154	Decal — Free Wheeling	1
156	3660	Wire Battery To Ground	1	208	6600	Decal — Hood Trim	2

5052 TRANSMISSION



PARTS LIST

5052 TRANSMISSION

When ordering parts always list Part No. and name of part.

Item No.	Part No.	Description	No. Req'd.	Item No.	Part No.	Description	No. Req'd.
1	5956	Case R.H.	1	30	908034-6	Bolt Hex $\frac{3}{8}$ -16 x 1" Nyllok	3
2	1532	Bearing — Needle 1" I.D.	3	31	5966	Ass'y. Park Brake	1
3	1533	Bearing — Ball 1 $\frac{1}{2}$ "	2	32	5969	Ass'y. Lever — Brake	1
4	1528	Bearing — Needle 1" I.D.	2	33	933152	Roll Pin $\frac{1}{8}$ x $\frac{3}{4}$	1
5	5958	Seal — Oil 1" I.D.	2	34	5990	Ass'y. — Filter (Throw-A-Way)	1
6	5959	Seal — Brake Shaft $\frac{1}{2}$ " I.D.	1	35	5991	Fitting — Filter	1
7	3915	Pin — Dowel	2	36	5992	Strainer	1
8	5957	Case — L.H.	1	37	6201	Ass'y. Hydrogear Unit Complete	1
9	5960	Bearing Needle 1" I.D.	1	38	5994	Arm — Cam Follower	1
10	3905	Case — Differential	2	39	933215	Roll Pin $\frac{1}{4}$ x $1\frac{1}{4}$	1
11	3906	Gear — Differential Bull	1	40	5995	Eccentric — Cam Follower	1
12	4235	Gear — Differential Pinion	4	41	909849-5	Set Screw $\frac{1}{4}$ -20 x $\frac{5}{16}$ Nyllok	1
13	3909	Pin — Differential	4	42	5996	Cam	1
14	1329	Bolt Hex Special $\frac{3}{16}$ -18 x $3\frac{1}{4}$	4	43	5997	Spring	2
15	1316	Nut — Huglock $\frac{3}{16}$ -18	4	44	5998	Plate — Tension	2
16	5961	Axle — Rear	2	45	909004-4	Screw Round Head #8-32 x $\frac{7}{8}$	2
17	3908	Gear — Axle	2	46	6155	Ass'y. Dipstick & Filter	1
18	933217	Roll Pin $\frac{1}{4}$ x $1\frac{1}{2}$	2	47	943346-4	Nipple $\frac{1}{2}$ Pipe x $3\frac{1}{2}$	1
19	5962	Gear	1	48	943004	Coupling $\frac{1}{2}$ Pipe	1
20	5963	Gear 22 Teeth	1	49	5955	Gasket — Pump	1
21	5964	Gear 33 Teeth	1	50	943460	Plug $\frac{1}{4}$ Pipe	1
22	5965	Shaft 1" Dia.	1	51	6444	Dampening Valve Complete (With "O" Rings)	2
23	936131	Snap Ring 1" Shaft	2	52	970053	"O" Ring — Dampening Valve (Large)	2
24	937014	Key #9 Woodruff	2	53	970014	"O" Ring — Dampening Valve (Small)	2
25	5999	Gasket — Case	1	54	6448	Towing Valve	1
26	908143-4	Bolt Hex $\frac{3}{8}$ -16 x 5	2	55	970010	"O" Ring — Towing Valve	1
27	908038-4	Bolt Hex $\frac{3}{8}$ -16 x 2	3	56	5993	Support — Cam Block	1
28	908043-4	Bolt Hex $\frac{3}{8}$ -16 x $3\frac{1}{2}$	1	57	911037	Screw — Socket Head Cap $\frac{1}{4}$ -20 x $\frac{1}{2}$	3
29	915113-6	Nut $\frac{3}{8}$ -16 Nyllok	6				

OWNERS MAINTENANCE RECORD

OIL CHANGES

DATE _____ TYPE & KIND OF OIL _____

DATE _____ GREASE JOBS _____

TUNE UPS

DATE _____ PARTS REPLACED _____

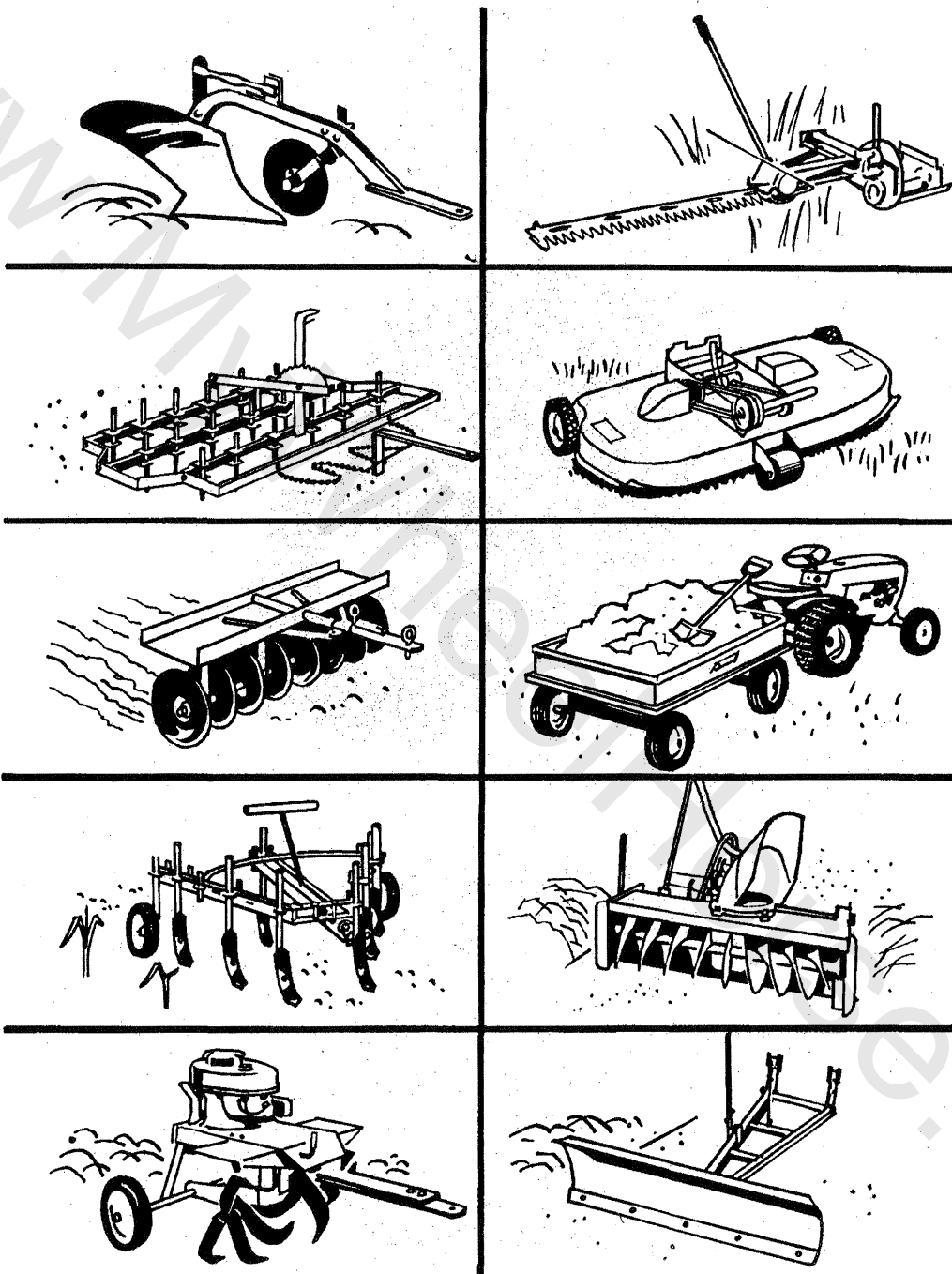
BATTERY SERVICE

DATE _____ SERVICE REQUIRED _____

MISCELLANEOUS

DATE _____

ALL SEASON USE



www.MylittleHorse.com

