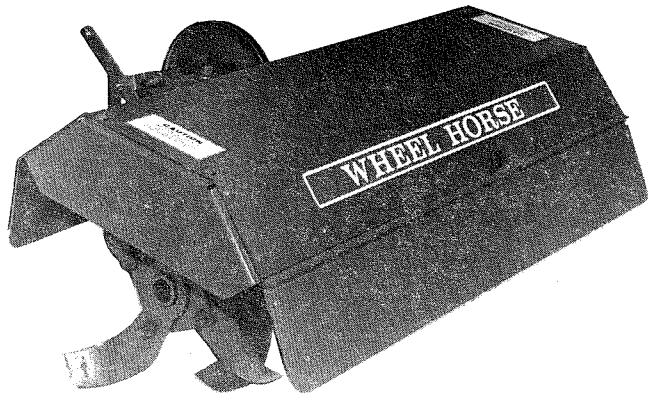


# PARTS LIST AND INSTRUCTIONS

TILLER

RE Wallace

## FACTORY ORDER NUMBER 7-1252



### DESCRIPTION

This tiller is for use on 1975 C series and B-100 model tractors. It will also fit comparable 8-speed and automatic prior models.

### INSTALLATION

If either or both of the hitches shown in Fig. 1 are on the tractor, remove them by removing one of the snap rings from the shaft holding them to the transmission, then slide the shaft out. Reinstall the clevis pin in the lift cable for further use.

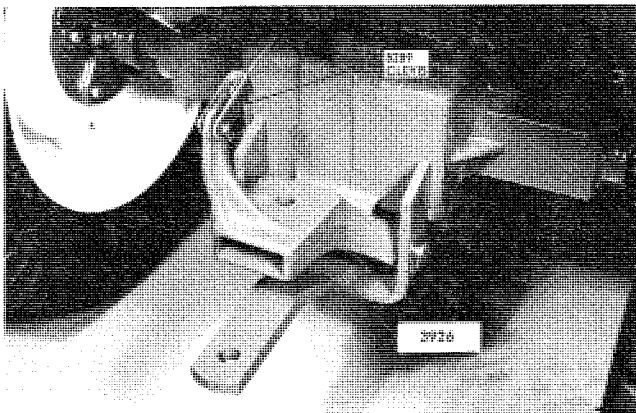


Fig. 1. Hitch Shaft and Clevis Pin

If there is no lift cable on the tractor, thread the cable (item 89) through the clevis (90) and push the cable through the conduit provided on the tractor. The other end of the cable will be attached later in the installation procedure.

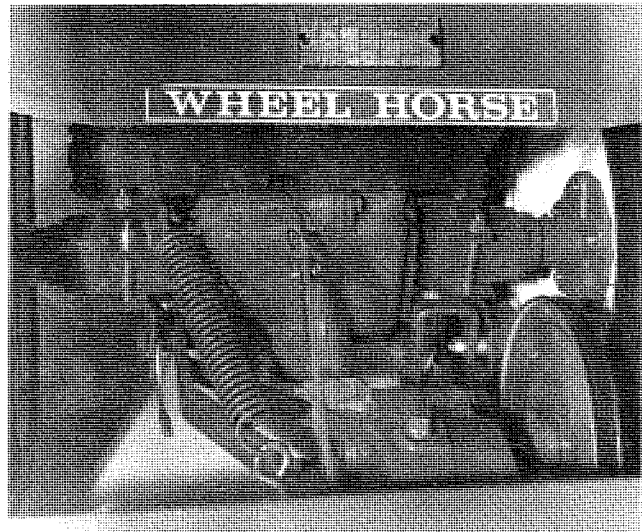


Fig. 2. Lift Cable and Clevis with Rear Hitch Installed

Install the rear hitch on the axle as shown in Fig. 2. Angle spacers (72) are used to fill the gap between the bolts and the axle housing on mechanical transmission tractors. These spacers are not used on automatic transmission tractors.

Center the hitch bar on the axle and tighten with the bolts and links provided. Open the latch by pulling up. Install the tiller mounting shaft in the hitch and secure by pushing down on the latches. During installation, the right hand axle hitch should be opened just far enough for the hitch shaft to enter. In this position the latch handle will be below the idler brace and will not interfere with installation.

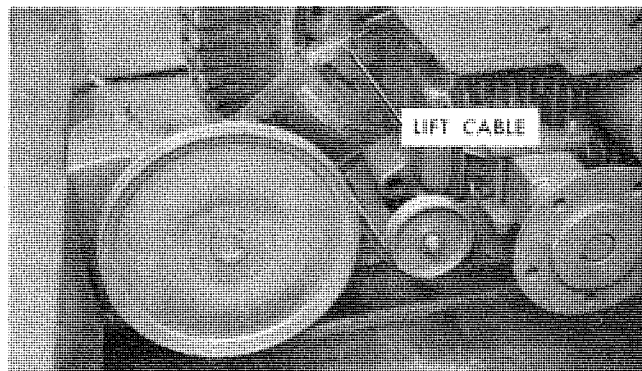


Fig. 3. Lift Cable Attached



# WHEEL HORSE

## lawn & garden tractors

Attach the rear end of the lift cable to the tiller as shown in Fig. 3. Block the tiller up until it is tight against the transmission case. Insert the thimble (91) into one end of the clevis assembly (93) and secure with a clevis pin and cotter pin. Fasten the remaining end of the clevis assembly to the tractor lift arm as shown in Fig. 4.

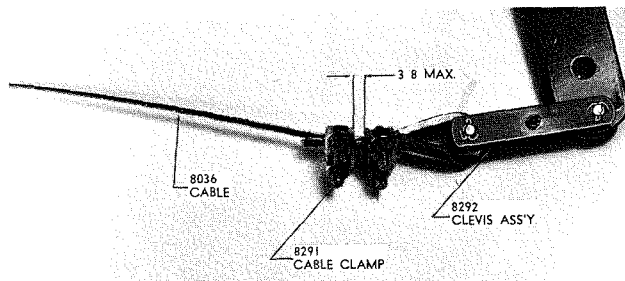


Fig. 4. Lift Arm Connection

Wrap the cable around the thimble and remove all slack. Secure with the cable clamps. Place one clamp directly behind the thimble and the other  $\frac{3}{8}$ " maximum away as shown in Fig. 4. Cut off any excess cable.

Install the front idler assembly in the front hitch slots. Make sure the idler shaft is securely placed in the hitch opening and that the appropriate fastener (plunger or hairpin) is in place.

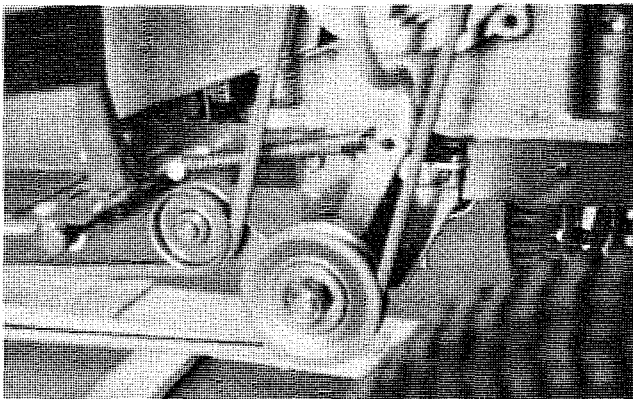


Fig. 5. Idler Spring Installation

Using the hole in the frame in front of the brake pedal, attach a  $\frac{3}{8}$ -16 x  $2\frac{3}{4}$  bolt and two  $\frac{3}{8}$ -16 nuts, one nut on each side of the hole. Connect one end of the idler spring (84) to the shank of the bolt and the other end to the front idler. See Fig. 5.

On older model tractors, refer to Fig. 6 and remove the bolt holding the footrest to the belt guard. Replace it with a  $\frac{3}{16}$ -18 x 1 bolt (85). Thread a  $\frac{3}{16}$ -18 Eslok nut on the end of the bolt, leaving room to hook the idler spring over the bolt between the nut and the belt guard. Then connect the spring to both the bolt and the idler arm.

Route the belt over the front idlers as shown in Figs. 5 and 6, with the belt in the largest diameter engine pulley groove. Continue with the belt beneath the axle and around the pulleys as shown in Fig. 3. Sufficient belt tension will be provided by the spring loaded idler. Shift the quick hitch assembly as necessary to align the belt with the inner groove of the clutch pulley, then tighten the quick hitch mounting bolts.

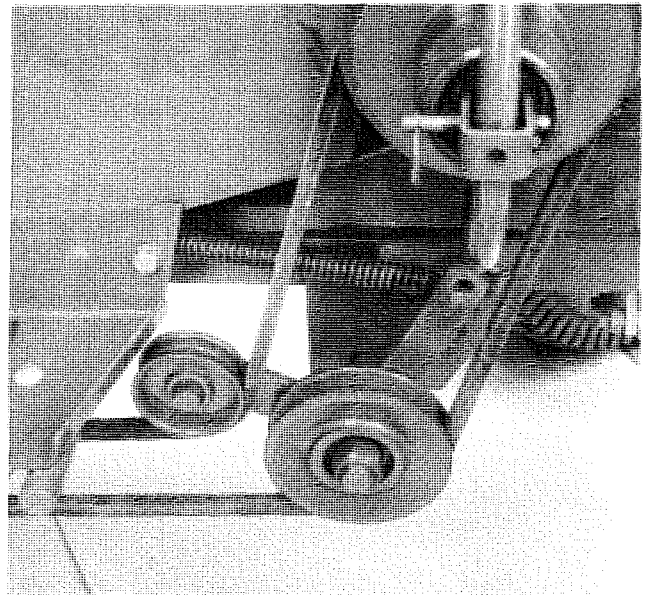


Fig. 6. Prior Model Idler Spring Installation

Hook one end of the lift assist spring (103) through the left bracket link (70). Attach the spring bracket (102) to the lift arm with the nut and bolt provided. Insert the threaded end of the eyebolt (104) through the hole in the spring bracket and secure with the nut. Hook the other end of the spring through the eyebolt. **Make sure the hook ends of the spring point down.** Thread the nut on the eyebolt until the spring is tight in the raised position.

#### OPERATION

For best performance, both front and rear wheel weights are recommended for all tractors using this tiller.

To prevent transmission damage, operate the tiller with the engine set at full throttle. Regulate tractor ground speed with the speed control lever to match soil conditions.

Never dismount from the tractor without first disengaging the P.T.O. clutch and engaging the parking brake.

#### ⚠ CAUTION ⚠

**Always stop engine and remove the ignition key from the switch before removing rocks or debris from the tines.**

In hard, compacted soils or clay it may be necessary to go slowly in order to obtain soil penetration. Better penetration can be obtained by removing the outer two tines which reduces the tilling width to 30 inches.

For best performance depending on ground cover it may be necessary to till area twice. One operation being 90° to the other if terrain permits or by overlapping.

When tilling in sod or gumbo soils the tiller will have a tendency to push the tractor. Wheel weights will help to counteract this. However, it may also be advisable to control the depth of soil penetration with the Height-A-Matic lift lever or with the hydraulic control attachment.

Do not over-till the soil or pulverize it. Soil tilled too finely will not absorb moisture. It will cause puddling and water run-off. In addition the soil will become compacted more readily.

## MAINTENANCE

The gear case is filled with oil at the factory and should not require filling. However, the oil level should be checked before using tiller and periodically afterwards. To check oil level the tiller should be on the tractor with the tines touching the ground. Remove the pipe plug on the bottom of the gear case. If oil runs from this hole then the oil is at its proper level. General purpose transmission type SAE 90 weight oil is used. When storing the unit for a long period of time, smear a light coat of grease on the tines to prevent rust.

## SPECIFICATIONS

WIDTH OF CUT: 36" standard. 30" optional by removing outer tines.  
 ROTOR TINE DIAMETER: 13½".  
 OUTPUT SHAFT: 1¼" diameter heat-treated and ground shaft.  
 MAXIMUM DEPTH OF CUT: 6" to 8".  
 WEIGHT: 150 lbs.  
 GEAR BOX LUBRICANT: SAE 90 gear lube, 1½ pints.  
 TINE ASSEMBLY: Right and left-hand assemblies, each with 6 one-piece, heat-treated tines. 12 cutting edges per side; 24 total cutting edges.

### PARTS LIST FOR TILLER FACTORY ORDER NUMBER 7-1252

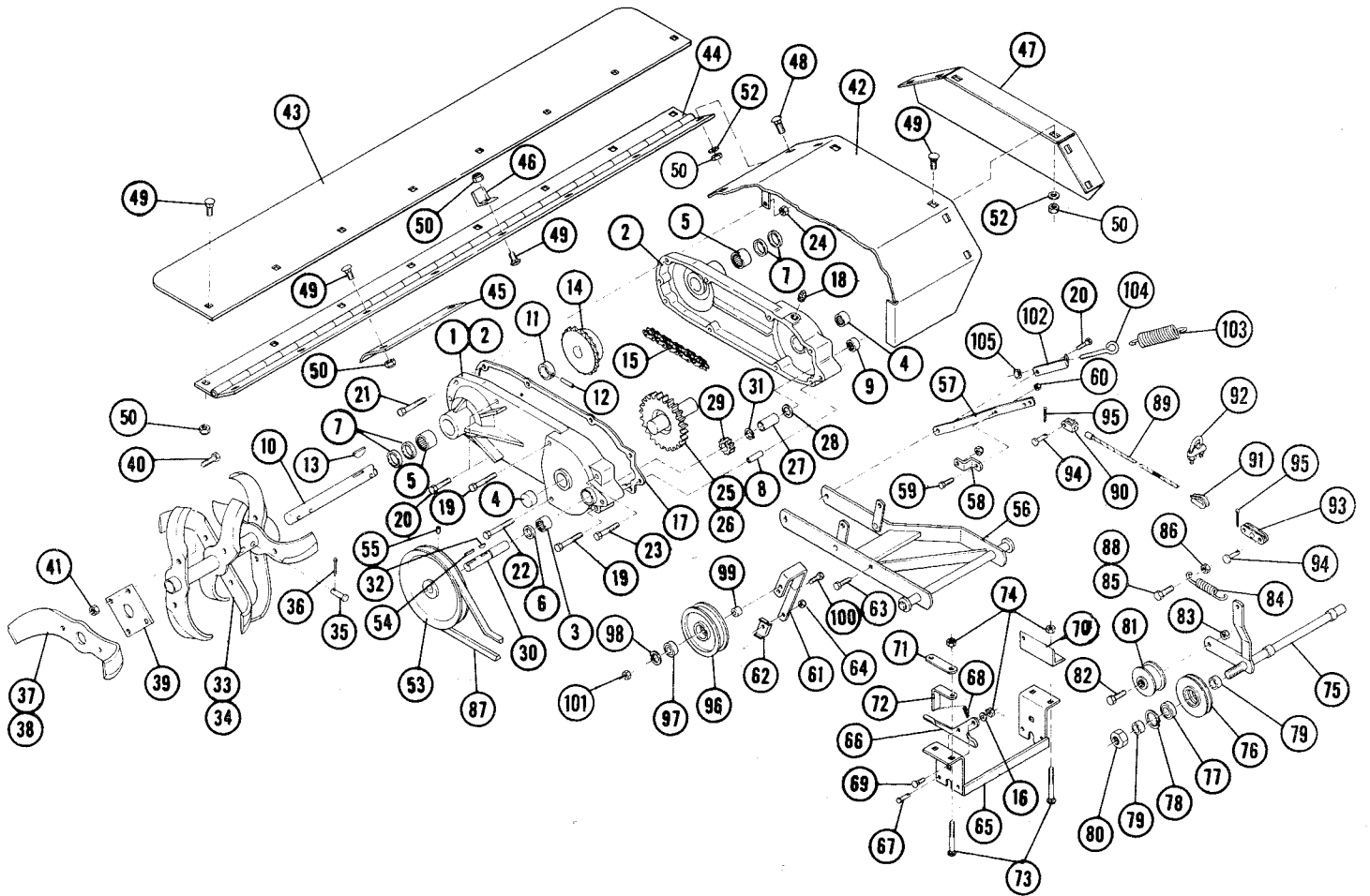
Parts available only through Authorized Dealers.  
 When ordering parts always list Part No. and Description.  
*(Specifications subject to change without notice.)*

ITEM NO.	PART NO.	DESCRIPTION	NO. REQ'D.
1	104965	Gear Case Assembly	1
2	6837	Case	2
3	1540	Needle Bearing, ¾" I.D. x ½	1
4	1532	Needle Bearing, 1" I.D. x ¾	2
5	6838	Needle Bearing, 1¼" I.D. x 1	2
6	100441	Seal, ¾" I.D.	1
7	103118	Seal, 1¼" I.D.	4
8	933242	Roll Pin, ⅜ x 1	2
9	1529	Needle Bearing, ¾" I.D. x ¾	1
10	6842	Tine Shaft	1
11	6843	Spacer	1
12	933232	Roll Pin, ⅜ x 2	1
13	937058	#128 Woodruff Key	1
14	6845	Sprocket, 20 Teeth	1
15	6848	Chain, ¾ Pitch, 44 Pitches	1
16	920009	Washer - ⅜ SAE	2
17	6851	Gasket	1
18	943421	Pipe Plug, ½-14	2
19	908144	Bolt, Hex ⅜-16 x 4½	1
20	908041	Bolt, Hex ⅜-16 x 2¾	3
21	908043	Bolt, Hex ⅜-16 x 3½	1
22	908143	Bolt - ⅜-16 x 5½	1
23	908044	Bolt, Hex ⅜-16 x 4	1
24	915663	Nut, ⅜-16 E.S.	8
25	6895	Gear and Sprocket Assembly	1
26	6898	Shaft	1
27	6963	Spacer	1
28	1535	Thrust Washer	1
29	3528	Pinion Gear	1
30	104387	Input Shaft	1
31	936125	Snap Ring, ¾ Shaft	1
32	937014	#9 Woodruff Key	1
33	9204	R.H. Tine Assembly	1
34	9205	L.H. Tine Assembly	1
35	9208	Clevis Pin	4
36	932017	Cotter Pin, ⅛ x 1	4
37	9206	R.H. Tine	1
38	9207	L.H. Tine	1
39	9203	Tine Mounting Plate	2
40	908046	Bolt, Hex ⅜-14 x 1	8
41	915114	Nut, ⅜-14 Nyllok	8
42	104435	Tine Shield Assembly	1
43	104437	Rear Tine Guard	1
44	104438	Hinge	1
45	104436	Lower Tine Guard Stop	2
46	2595	Upper Tine Guard Stop	1
47	104434	Tine End Cover	2

**PARTS LIST FOR TILLER  
FACTORY ORDER NUMBER 7-1252**

Parts available only through Authorized Dealers.  
When ordering parts always list Part No. and Description.  
**(Specifications subject to change without notice.)**

ITEM NO.	PART NO.	DESCRIPTION	NO. REQ'D.
48	900037	Bolt, Carriage $\frac{5}{16}$ -18 x $\frac{3}{4}$	2
49	900036	Bolt, Carriage $\frac{5}{16}$ -18 x $\frac{5}{8}$	24
50	915112	Nut, $\frac{5}{16}$ -18 Eslok	26
52	920008	Washer — $\frac{5}{16}$ SAE	12
53	6844	Pulley	1
54	1005	Square Key	1
55	7977	Set-Screw, $\frac{5}{16}$ -18 x $\frac{1}{2}$ Sq. Hd.	2
56	104757	Hitch Assembly	1
57	104823	Lift Arm	1
58	103607	Lift Brace	1
59	908033	Bolt, Hex $\frac{3}{8}$ -16 x $\frac{7}{8}$	1
60	915113	Nut, $\frac{3}{8}$ -16 Eslok	1
61	104660	Idler Arm	1
62	104661	Idler Support	1
63	908035	Bolt, Hex $\frac{3}{8}$ -16 x $1\frac{1}{4}$	1
64	915663	Nut, $\frac{3}{8}$ -16 E.S.	1
65	104659	Mounting Bracket Assembly	1
66	104657	Hitch Latch	2
67	932120	Clevis Pin	2
68	933504	Hairpin Cotter	2
69	900063	Bolt, Carriage $\frac{3}{8}$ -16 x 1	2
70	104845	Link	1
71	3697	Link	1
72	7713	Axle Spacer	2
73	900073	Bolt, Carriage $\frac{3}{8}$ -16 x $3\frac{1}{2}$	4
74	915113	Nut, $\frac{3}{8}$ -16 Eslok	6
75	104089	Front Idler Assembly	1
76	104974	Idler Pulley (w/Bearing)	1
79	7038	Spacer	2
80	915640	Nut, $\frac{3}{4}$ -16 E.S. Jam	1
81	MW8821	Fiat Idler Pulley	1
82	908036	Bolt, Hex $\frac{3}{8}$ -16 x $1\frac{1}{2}$	1
83	915113	Nut, $\frac{3}{8}$ -16 Eslok	3
84	6135	Idler Spring	1
85	960179	Bolt, Whizlock $\frac{5}{16}$ -18 x 1	1
86	915112	Nut, $\frac{5}{16}$ -18 Eslok	1
87	1599	Belt	1
88	908041	Bolt, Hex $\frac{3}{8}$ -16 x $2\frac{3}{4}$	1
89	104928	Lift Cable	1
90	8289	Clevis	1
91	8290	Thimble	1
92	8291	Cable Clamp	2
93	8292	Clevis Assembly	1
94	932120	Clevis Pin	3
95	932000	Cotter Pin, .06 x .50	3
96	6740	Idler Pulley	1
97	4567	Bearing	1
98	936024	Snap Ring, $1\frac{3}{8}$ Bore	1
99	6638	Spacer	1
100	908036	Bolt, Hex $\frac{3}{8}$ -16 x $1\frac{1}{2}$	1
101	915113	Nut, $\frac{3}{8}$ -16 Eslok	1
102	104448	Spring Bracket	1
103	4629	Spring	1
104	100653	Eye Bolt	1
105	915663	Nut, $\frac{3}{8}$ -16 E.S.	1
	103174	Decal — Wheel Horse	1
	105003	Decal — Caution	2





**WHEEL HORSE PRODUCTS, INC., 515 West Ireland Road, South Bend, Indiana 46614**

PRINTED IN U. S. A. REVISED 11-74

P/L 530 PART NO. 803420

# 7-1252 ASSEMBLY INSTRUCTIONS

## SUPPLEMENTS PARTS LIST AND INSTRUCTIONS 803420

1. Remove the tiller (7-1252) from the box and position the tiller so that it sets in an upright position with the back hinged flap down.
2. Loosen the 3/8-16 X 5 $\frac{1}{2}$  bolt holding the mounting bracket to the bottom of the tiller.
3. Slide the 3/8-16 X 5 $\frac{1}{2}$  bolt out of the bracket and case about three (3) inches. Move the H-shaped mounting bracket (104757), the lift arm - has a slight offset - (104823) and the spring bracket (104448) 180° toward the front.
4. Reinstall the 3/8-16 X 5 $\frac{1}{2}$  bolt; DO NOT TIGHTEN.
5. Remove the 3/8-16 X 4 $\frac{1}{2}$  bolt from the front of the tiller gear box. Align the "mounting ears" of the mounting bracket with the hole in the tiller gear box and reinstall the 3/8-16 X 4 $\frac{1}{2}$  bolt. Tighten bolt. NOTE: THE "MOUNTING EARS" ARE DESIGNED TO FIT EXTREMELY TIGHT ON THE TILLER GEAR BOX.
6. Loosen the 3/8-16 bolt which holds the preinstalled lift arm support (103607) the left front of the tiller gear case. Align the lift arm support (103607) with the lift arm (104823) and secure with the 3/8-16 X 1 bolt and 3/8-16 nut packaged with the tiller instructions. Tighten the bolt holding the lift arm support (103607) to the tiller gear case.
7. Raise the spring bracket (104448) to it's maximum upright position and tighten the 3/8-16 X 5 $\frac{1}{2}$  bolt installed in paragraph 4.
8. Attach the idler arm (104660) to the mounting bracket (104757) using one 3/8-16 X 1 $\frac{1}{4}$  bolt, one idler arm (104661) support, and one 3/8-16 nut. NOTE: THE IDLER ARM SUPPORT ATTACHES TO THE INSIDE OF THE RIGHT ARM OF THE MOUNTING BRACKET. WHEN INSTALLED CORRECTLY, THE IDLER ARM WILL LEAN SLIGHTLY FORWARD.
9. Attach the large drive pulley (6844) to the input shaft (104387) of the tiller. The drive pulley (6844) is installed with the hub to the inside. NOTE: FOR CORRECT BELT ALIGNMENT, THERE SHOULD BE A  $\frac{1}{4}$ " GAP BETWEEN THE END OF THE INPUT SHAFT AND THE OUTSIDE EDGE OF THE PULLEY.



---

Wheel Horse Service Bulletins 1961 - 1990: **#180a** Issued: March 1976  
**36" Tiller Conversion**

[Previous](#)   [Table of Contents](#)   [Next](#)

---

SUPERCEDES SERVICE BULLETIN No.180

To All Dealers:

1. Problem

1.1 New rear lift on 1976 B & C Series tractors will not accommodate 1975 36" tiller (7-1252).

1.2 Old rear lift on 1975 and prior B & C Series tractors will not accommodate 1976 36" tiller (67-36TL01).

2. Solution

2.1 1975 36" tiller (7-1252) can be updated to fit 1976 B & C Series tractors by employing Service Assembly # 105111\*.

2.2 1976 36" tiller (67-36TL01) can be adapted to fit 1975 and prior B & C Series tractors by employing Service Assembly # 105105.

\* Service assembly #105111 supercedes service assembly assembly #105106. Service assembly 105111 contains two #1278 shim washers and two #5618 shim washers not found in Service Assembly 105106 (see Service Bulletin #184).



---

Wheel Horse Service Bulletins 1961 - 1990: **#184** Issued: March 1976  
**1976 B & C Series Tractors Rear Lift**

[Previous](#) [Table of Contents](#) [Next](#)

---

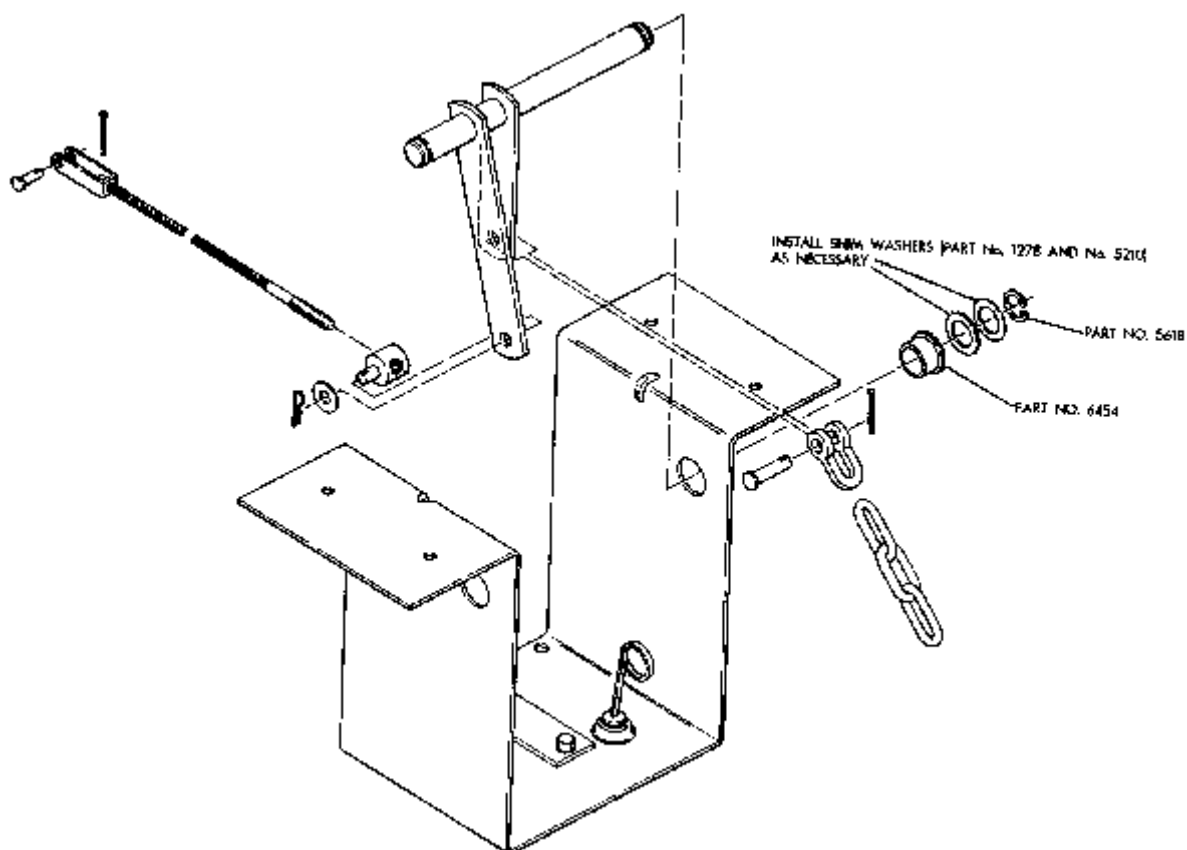
To All Dealers:

1. Problem

1.1 Rear lift bushings (Part No. 6254) moving out of position (Fig. 1).

2. Solution

2.1 Install required amount of .050" shim washer (Part No. 1278) and/or .015" shim washer (Part No. 5210) between the "E" rings (Part No. 5618) and the rear bushings (Part No. 6254) as shown in Fig. 1. An equal number of shims should be used on both ends of the lever assembly (Part No. 105539).



---

Wheel Horse Service Bulletins 1989 - 1990: **T Series #T10** Issued: July 1990  
**Slot & Clevis Hitch Conversions, 36" Tiller Conversions**

[Previous](#)   [Table of Contents](#)   [Next](#)

---

TO ALL DEALERS:

1. Subject

1.1 The following table summarizes all backfit/conversion information applying to the slot and clevis hitch and the 36" tiller. This equipment is used on:

1969-73 Long Frame Tractors

1974-77 B and C-Series Tractors

1978 and Later C,GT,3/4/500-Series

1.2 This information is most often useful when a customer purchases a new tractor and wishes to keep the original older hitch or 36" tiller. (Tiller 07-36TL02 and later fit 1978 and later tractors with no added parts or alterations required.)

2. Service Action

2.1 To use the table properly it is essential that you know the EXACT 8-Series number or VIN of the hitch or tiller and the correct model year of the tractor.

3. Installation Information/Original Service Bulletin Reference

S/A 105104 - Instructions with S/A; Original Bulletin #179A

S/A 105105 - Instructions with S/A; Original Bulletin #180A

S/A 105111 - Instructions with S/A; Original Bulletin #180A

S/A 105112 - Instructions with S/A; Original Bulletin #179A

S/A 105162 - Instructions on Original Bulletin #220

S/A 106629 - Instructions with S/A; Original Bulletin #220

ROUTING	SERVICE MANAGER	SALES MANAGER	PARTS MANAGER	CHIEF MECHANIC	MECHANIC NO 1	MECHANIC NO 2	MECHANIC NO 3	MECHANIC NO 4	RETURN THIS TO
INITIAL HERE									

>

**OBTAIN THE INDICATED SERVICE ASSEMBLY/PARTS TO INSTALL IT ON A:**

## WHEN

YOU	1969-75	1976-77	1978 and LATER
HAVE A	TRACTOR	TRACTOR	TRACTOR

## CLEVIS HITCH:

8-5511	*	S/A 105112	N/A
8-5512	S/A 105104	*	S/A 106629, Note 1
8-5513	S/A 105104	*	S/A 106629, Note 1
8-5514	S/A 105104	S/A 105162	*, Note 1
8-5515	S/A 105104	S/A 105162	*

## SLOT HITCH:

8-5521	*	S/A 105112	N/A
8-5522	S/A 105104	*	S/A 106629, Note 1
8-5523	S/A 105104	*	S/A 106629, Note 1
8-5524	S/A 105104	S/A 105162	*, Note 1
8-5525	S/A 105104	S/A 105162	*

## TILLER:

7-1251	Note 2	Note 2	Note 2	
7-1252	*	S/A 105111	S/A 106629, Note 3	
67-36TL01	S/A 105105	*	S/A 106629, Note 1, 4, 5	..
77-36TL01, 02	S/A 105105	*	S/A 106629, Note 1, 4, 5	
87-36TL01	S/A 105105	S/A 105162	*, Note 1, 4, 5	
97-36TL01	S/A 105105	S/A 105162	*, Note 1, 4, 5	
07-36TL01	S/A 105105	S/A 105162	*, Note 1, 4, 5	

\* Indicates original application; fits "as supplied", unless otherwise noted.

**NOTES**

1. Automatic tractors with an "E" in the VIN (Eaton Hydrostatic Transmission) also require 108144 Lift Cable and 108143 Clevis.

2. Check that tiller has been updated according to Service Bulletin #145, then follow 7-1252 information. If brace on tiller frame prevents raising tiller, cut brace out and re-weld lower on frame.

3. The following parts are also required, as applicable. Figure 1 shows the hole locations for mounting the lift plate. The lift plate is installed so the lift chain hole is down (closest to gearcase).

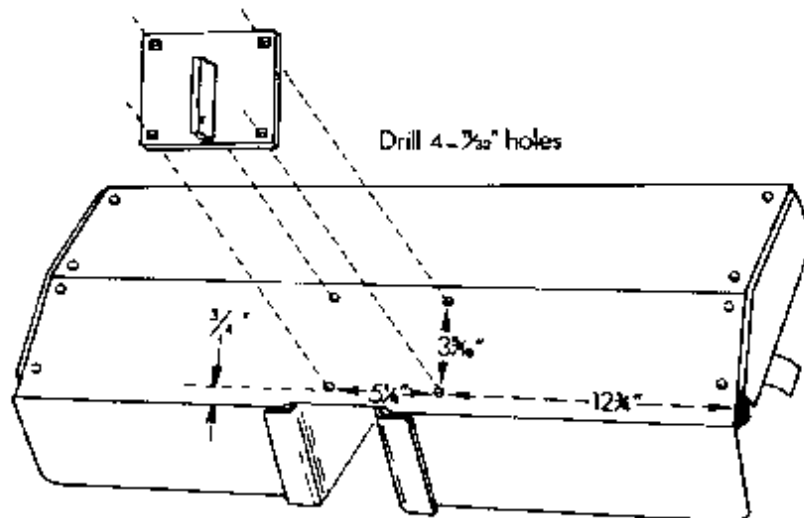


Figure 1. Lift Plate Holes, 7-1252 Modification

### All Models

1278 (2) Shim Washer	810191 (1) Tiller Owner's Manual
5210 (2) Shim Washer	(Disregard Belt Guard Instructions,
5618 (2) E-Ring	Fig. 23)
6254 (2) Bushing	900037 (4) Carriage Bolt 5/16-18 x 3/4
104524 (1) Trunnion	915112 (4) Eslok Nut 5/16-18
105820 (1) Clevis	920009 (1) Washer 3/8 SAE
105821 (1) Clevis Pin	932000 (1) Cotter Pin 1/16 x 1/2
108144 (1) Lift Cable	932120 (1) Clevis Pin
	933504 (2) Hairpin Cotter

### 8-Speed and Sundstr and Auto. Only

108145 (1) Clevis, Short

#### Eaton Auto. Only

108143 (1) Clevis, Long

#### Twin Cylinder Models

103635 (1) Drive Belt

4. Twin cylinder models require drive belt 103635.

5. Automatic tractors with Eaton hydrostatic transmission: if the LH (right angle) bracket on the rear hitch interferes with the oil filter, replace it with 108485 bracket. The original bracket can also be modified by cutting off material as required to eliminate the interference. The lift assist spring is not used in this case.

---

**Toro Service Bulletins 1991 - Present: Garden Tractors #14** Issued: July 1993  
**Toro Wheel Horse "T" Bulletins**

[Previous](#)   [Table of Contents](#)   [Next](#)

---

PRODUCT: Garden Tractors

SUBJECT: Service Bulletin Information

SITUATION: Some Toro Wheel Horse Service Bulletins issued during the 1990 model year ("T" prefix bulletins) are applicable to 1991 and later products. For ease in identifying and finding this information, a listing of product, subject matter and bulletin number follows. In addition to the paper copies, "T" prefix service bulletins are contained on Wheel Horse fiche card Orange 10.1, dated 5-93.

<u>Product</u>	<u>Subject</u>	<u>Bulletin *</u>
3/4/500-Series	Engine Oil & Fuel Recommendations	T7
3/4/500-Series	Servicing New Batteries/Front Wheel Bearing Lubrication	T8
3/4/500-Series	Guidelines for Fluid-filled Tires	T9
3/4/500-Series	Installing Older 36" Tillers or Slot and Clevis Hitches on Newer Tractors	
	-NOTE-	
	1992 and later tractors also require Clamp P/N 108903 and Lift Tube P/N 105845 (8-Speed) or P/N 108315 (Hydro) in addition to parts called for in bulletin.	T10
3/4/500-Series	Eaton Hydrostatic Transaxle Ident.	T11
3/4/500-Series	Use of Loctite on Setscrews	T12
3/4/500-Series	Kohler, Toro Power Plus Regulator Rectifier Troubleshooting	T13
3/4/500-Series	Product Selection Basis	T15
3/4/500-Series	Voltmeter and Indicator Light Circuit Board Electrical Precaution	T16
Product	Subject Bulletin *	
3/400-Series	Oil Level Sensor Switch Servicing, Kohler Single Cylinder Engine	T17
3/400-Series	8-Speed Clutch Idler Dampener Adjustment (Applies to 1 991 Single Cylinder Tractors)	T18
500-Series	Front Wheel Bearing Grease Seal	T19
3/4/500-Series	Replacing Transmission Mounting Plate	T20

3/400-Series	Spark Plug Maintenance, Kohler Engines	T31
3/4/500-Series	Replacement Steering Wheel Insert	T33

\*These bulletins are located on Wheel Horse fiche card Orange 10.1,dated 5-93.