

PARTS LIST AND INSTRUCTIONS



WHEEL HORSE

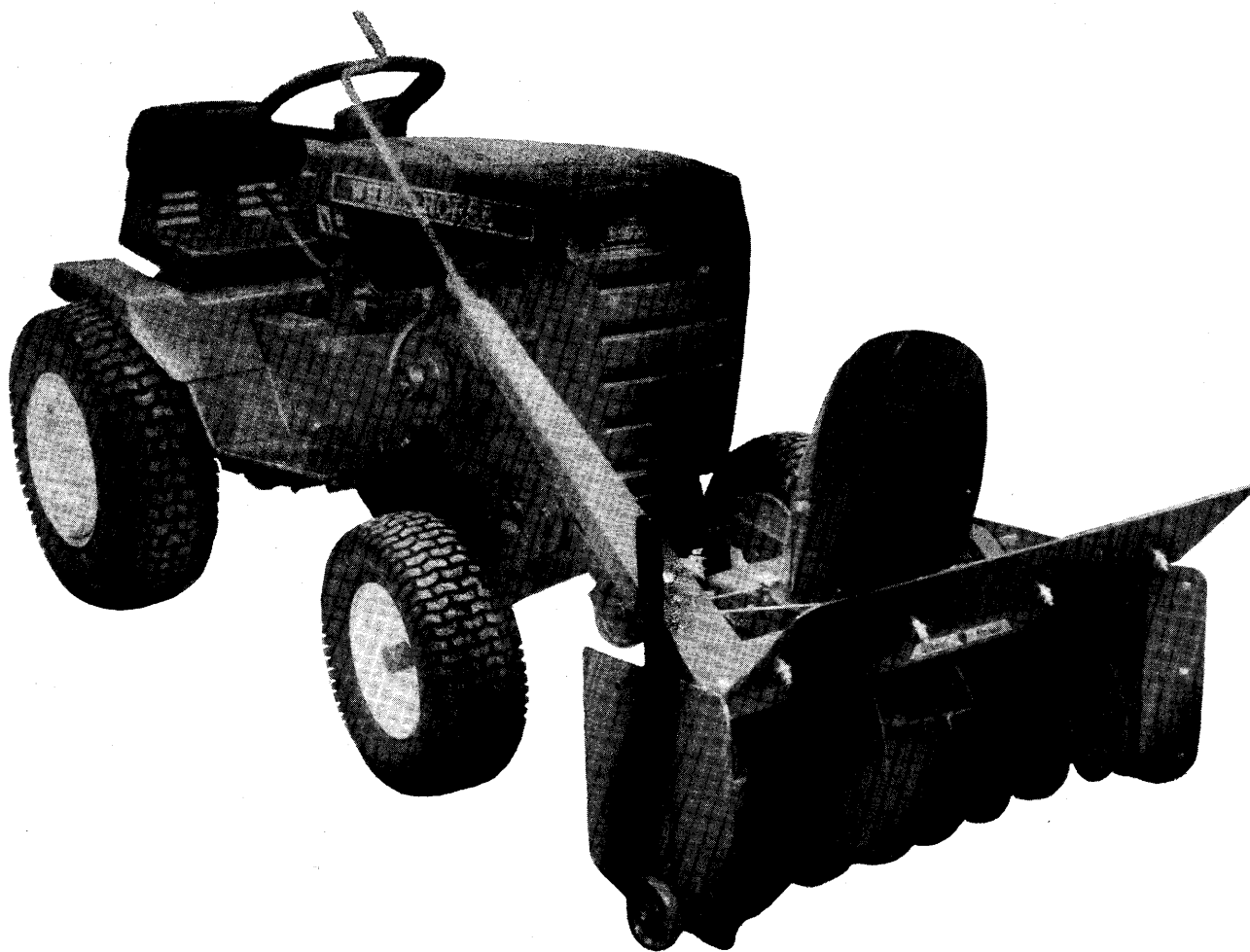
WHEEL-HORSE PRODUCTS, INC. • SOUTH BEND, IND.

SNOW THROWER

COMPLETING PACKAGE

MODELS

6-9113 & 6-9131



DESCRIPTION

The snow thrower is shipped in two separate cartons, a basic unit, and a completing package. This carton contains the completing package and must be used with the basic unit No. 6-6212.

When used on 1972 Long Frame Tractors 8-5541 Hitch Accessory is required.

When used on 1971 and older Long Frame Tractors 8-5551 Hitch Accessory is required.

ASSEMBLY AND MOUNTING INSTRUCTIONS

Item numbers used in these instructions refer to called out numbers in the exploded view drawing on page 4.

Remove all parts from the cartons and place on a clean flat surface.

1. Install the mounting frame assembly by inserting the end with the four bolt holes into the blower housing frame. The arms should extend upward from the blower housing as shown in figure 1. Use the bolts and nuts provided to secure in place.

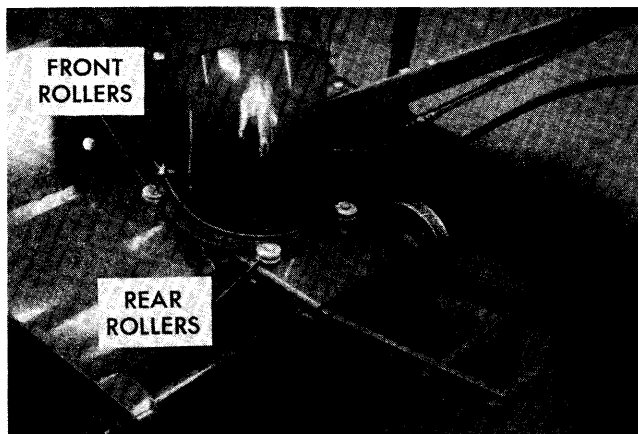


Figure 1

2. The shroud assembly is held by four rollers on top of the blower housing as shown in figure 1. To install the shroud, loosen and slide the two rear rollers back, fit the collar of the shroud into the front roller grooves, and move the rear rollers forward to fit snugly against the collar. Tighten the bolts, making sure the shroud rotates freely.

3. Attach the crank and support assembly to the blower housing and support bracket with the pre-installed bolts, nuts, and reinforcement plates. Place one of the plates (19) inside the blower housing and the other on top of the crank support mounting tab. Remove both preinstalled cotter pins (23) and the lower washer (7) from the crank. Insert the end of the crank rod through the hole in the support bracket and reinstall the washer (7) and cotter pin (23). Compress spring (24) against the end of the crank support and reinstall cotter pin (23) above the upper washer (7).

4. The Tach-a-matic front hitch is provided for easy installation and removal of the snow thrower without tools.

To install the snow thrower make sure that the hitch latch is in the released position — this is done by pushing in on the lock release pin, move the latch lever so the latch is open and release the lock pin to hold the latch in the open position. Insert and center the attachment shaft in the hitch slots and move the latch to the closed position allowing the lock release pin to seat the locking spacer preventing the latch from opening.

Removal of the snow thrower is done by pushing in on the release lock pin, which allows the latch to be moved to the open position.

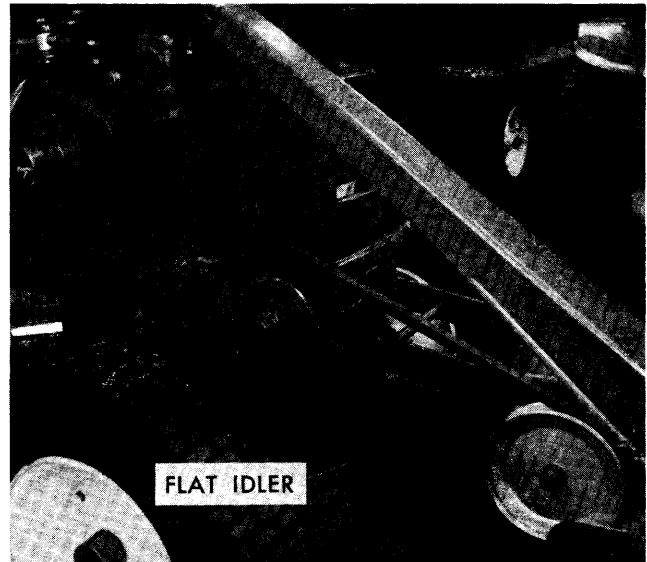


Figure 2

5. With washers (25) in place on the lift rod, insert the lift rod (28) in the end of the lift tube (27) and fit the other end of the lift tube over the pin at the lower rear center of the blower housing. Secure it with the $\frac{5}{8}$ " washer and $\frac{3}{16}$ " x 1" cotter pin. Install the lift rod stud in the top hole of the bottom tractor lift arm and secure with the hairpin cotter.

Note: The washers (25), in effect, lengthen the lift tube to provide more ground clearance in transport position. Because of variations among tractor models, the lift tube may strike the tractor front axle when the snow thrower is raised to the transport position. This can be corrected by removing one or both washers as necessary.

6. Raise the snow thrower to transport position. Fit the drive belt in the outer groove of the PTO clutch. Slip the lower strand of the belt between the belt guide bracket (11) and idler pulley (10) and attach the pulley to the idler arm (6) with the pre-assembled bolt and nut. Position the belt guide bracket perpendicular to the idler arm and tighten the nut securely.

7. Wrap the V-belt (29) around the drive pulley (16) and slide it hub-first on the drive shaft. Do not tighten the set screws at this time.

8. Hook spring (9) between the idler arm and the hole provided below the drive shaft in the blower frame. Rotate the idler arm assembly against spring tension and bring the lower belt strand over the flat idler as shown in figure 2. Align the drive pulley with the idler pulleys and tighten both set screws.

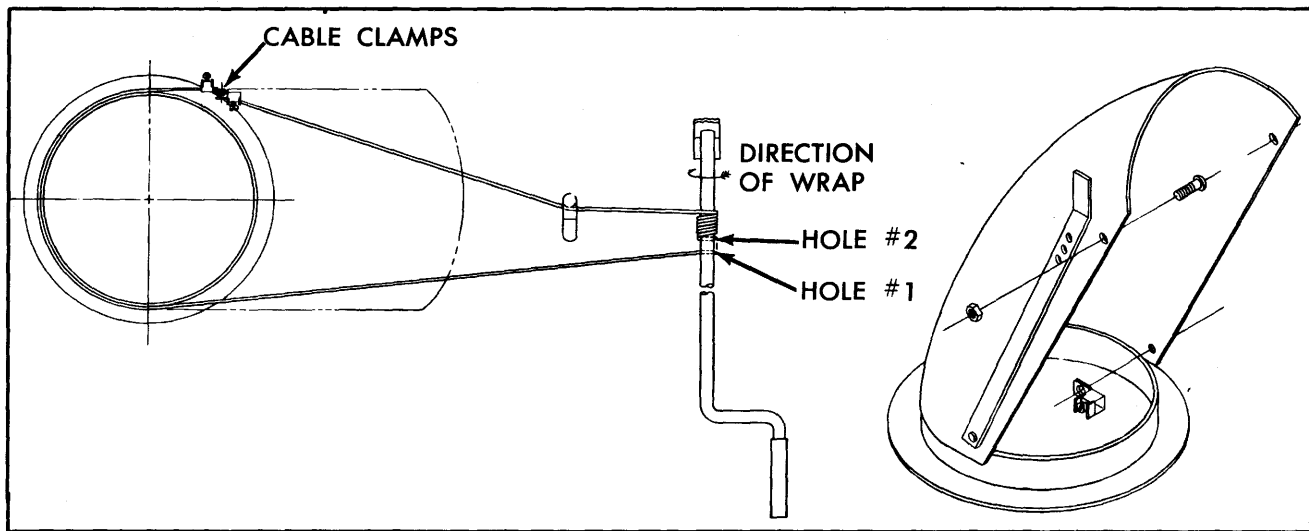


Figure 3

CABLE WRAPPING INSTRUCTIONS

1. Face the shroud to the right and thread one end of the cable from the left into the outside cable clamp. Tighten the clamp screw just enough to retain the cable.
2. Pull the cable around behind the shroud and thread the end through hole #1 and back through hole #2 in the crank (figure 3).
3. Wrap the cable seven (7) complete turns down the crank in the direction shown in figure 3, finishing the last turn on top of the crank.
4. Pull the cable behind the hook on the wrapper and insert it in the inside cable clamp. Tighten the clamp screw just enough to retain the cable.
5. Face the shroud forward. Grip both ends of the cable with pliers and pull the cable tight. Tighten both clamp screws securely. Turn the crank to check for free movement of the shroud.

The top extension plate mounts on the blower housing with carriage bolts, nuts and washers, provided as shown in figure 1. The side extension plates illustrated in figure 1 are accessories to increase the effective width of the snow thrower. They are available from your Wheel Horse dealer under part #8-0221.

OPERATING INSTRUCTIONS

Before starting the tractor engine, make sure the auger will rotate freely. This is especially important when the unit has been in use and left standing in the cold. The auger could be frozen in the housing and, if the PTO clutch is engaged under these conditions, the clutch or belt or both could be damaged. Also check the shroud to be sure it is free to turn.

Best snow throwing results are obtained with high auger speed and slow forward movement. Therefore, under normal conditions, operate the tractor in first gear at full engine speed. With automatic drive tractors, adjust speed to about one m.p.h.

Turning the pivot crank rotates the shroud from side to side to control the direction snow is thrown. The upper part of the shroud adjusts up and down to control the height and distance snow is thrown.

The height adjustment lever at the side of the snow thrower should be set according to conditions to prevent the blower housing from catching on uneven surfaces.

Under some conditions it will be necessary to coat the auger, shroud, and blower housing interior with paraffin or wax to prevent snow and ice from sticking to these surfaces.

CAUTION:

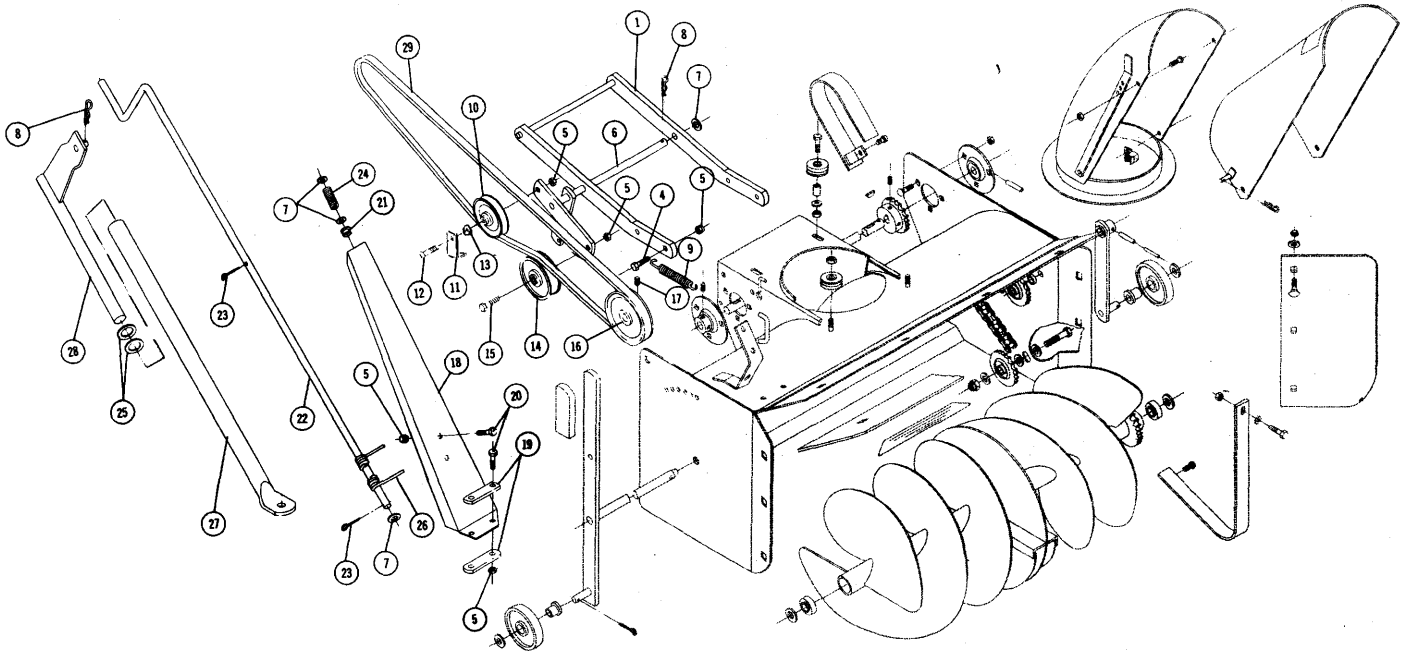
Never permit anyone to stand in front of the blower or discharge chute when the tractor engine is running. Keep children and pets away from the area while throwing snow. There may be objects in the snow being thrown which could cause injury to any one being struck by them.

LUBRICATION AND MAINTENANCE

Always shut off the tractor engine before lubricating or making any adjustment on the snow thrower. After the first hour of use, check and retighten all bolts, nuts, and set screws as necessary. Check chains and belt for proper alignment. Chain tension can be adjusted by loosening and shifting the lower idler sprocket in the slot provided in the blower housing frame. Tighten nut securely after making the adjustment.

The drive chain, bearings and all movable parts should be lubricated frequently with a light grade of machine oil.

When storing the snow thrower, it is advisable to coat the auger with a heavy machine oil to prevent rust.



6-9113 & 6-9131 SNOW THROWER — COMPLETING PACKAGE

When ordering parts always list Part No. and name of Part.
 Parts available only through Authorized Dealers.
 (Specifications subject to change without notice.)

Item No.	Part No.	Description	No. Req'd.	Item No.	Part No.	Description	No. Req'd.
1	102588	Mounting Frame	1	18	6426	Support — Crank	1
4	908033-4	Bolt Hex $\frac{3}{8}$ -16 x $\frac{7}{8}$	4	19	7494	Bar — Reinforcing	2
5	915113-6	Nut Nylok $\frac{3}{8}$ -16	11	20	908032-4	Bolt Hex $\frac{3}{8}$ -16 x $\frac{3}{4}$	4
6	9596	Idler Arm	1	21	5982	Bushing — Nyliner	1
7	920011-4	Washer $\frac{1}{2}$ Dia.	4	22	6413	Crank	1
8	933504-4	Hairpin Cotter	2	23	932016-4	Cotter Pin $\frac{1}{8}$ x $\frac{3}{4}$	2
9	6651	Spring	1	24	2354	Spring	1
10	7451	Pulley — Idler	1	25	920015-4	Washer — $\frac{3}{4}$ SAE	2
11	7450	Bracket — Belt Guide	1	26	4795	Cable	1
12	908037-4	Bolt Hex $\frac{3}{8}$ -16 x $1\frac{3}{4}$	1	27	101460	Tube — Lift (6-9113)	1
13	7672	Spacer	1		102729	Tube — Lift (6-9131)	1
14	6719	Pulley — Idler	1	28	1986	Lift Rod	1
15	908036-4	Bolt Hex $\frac{3}{8}$ -16 x $1\frac{1}{2}$	1	29	9750	Belt (6-9113)	1
16	8158	Pulley — Drive Shaft	1		102743	Belt (6-9131)	1
17	909862-5	Set Screw — Nylok $\frac{3}{16}$ -18 x $\frac{3}{16}$	2				