

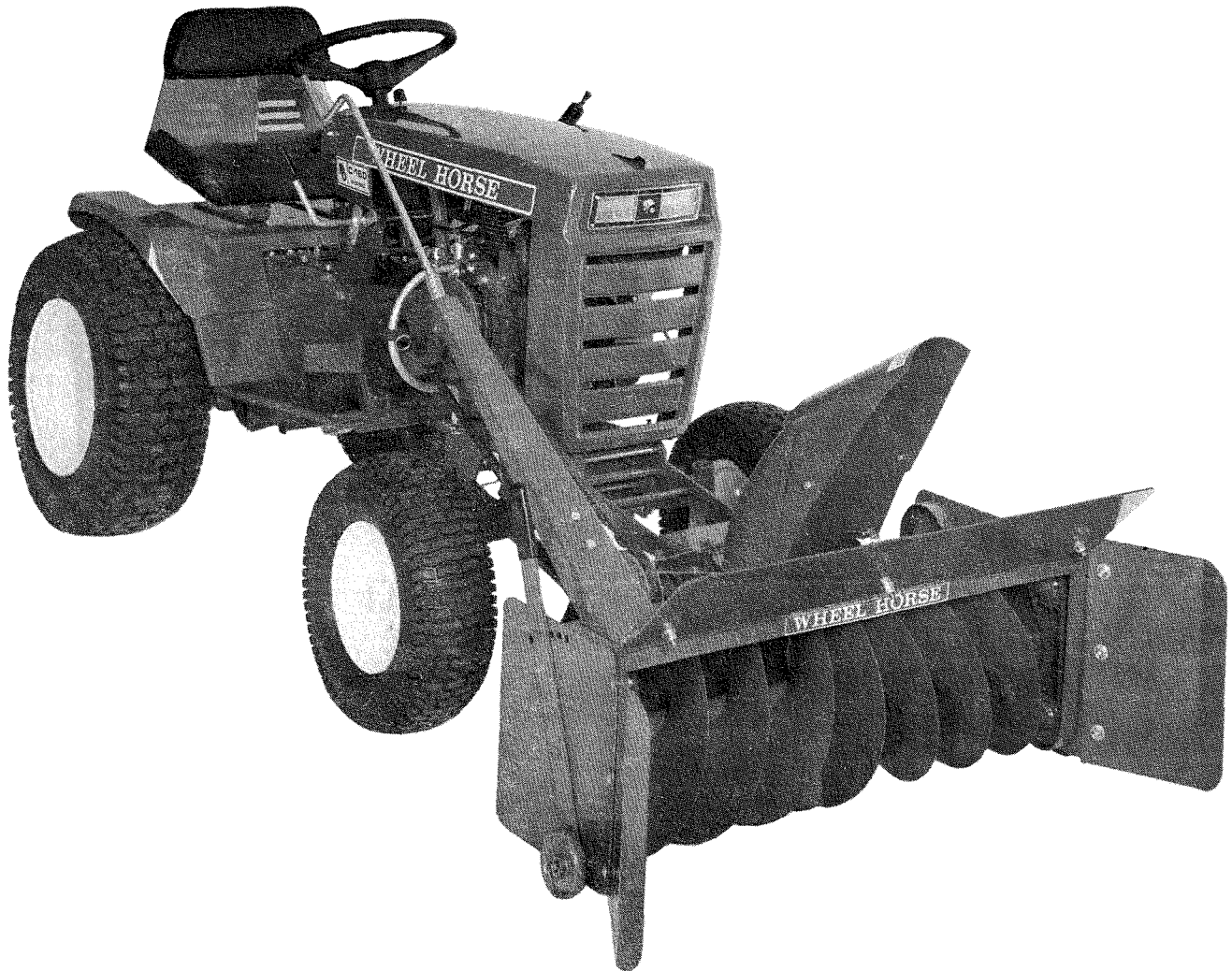
# PARTS LIST AND INSTRUCTIONS

SNOW THROWER

FACTORY ORDER NUMBER **6-6214**

for

1975 C SERIES TRACTORS  
AND PREVIOUS MODELS



## DESCRIPTION

This snow thrower is for use on all 1974 and 1975 "C" series tractors, and on all 1973 12, 14 and 16 HP. Long Frame tractors.

When used on 1972 Long Frame Tractors 8-5541 Hitch Accessory is required.

When used on 1971 and older Long Frame Tractors 8-5551 Hitch Accessory is required.

## ASSEMBLY AND MOUNTING INSTRUCTIONS

Item numbers used in these instructions refer to called out numbers in the parts drawing.



# WHEEL HORSE

lawn & garden tractors

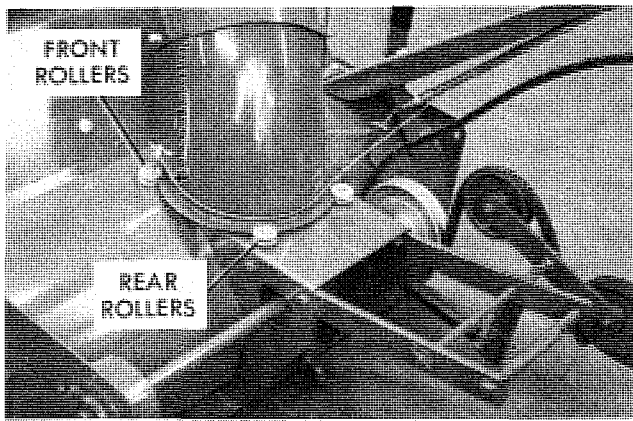


Figure 1

1. Install the mounting frame assembly by inserting the end with the four bolt holes into the blower housing frame. The arms should extend upward from the blower housing as shown in figure 1. Use the bolts and nuts provided to secure.

2. The shroud assembly is held by four rollers on top of the blower housing as shown in figure 1. To install the shroud, loosen and slide the two rear rollers back, fit the collar of the shroud into the front roller grooves, and move the rear rollers forward to fit snugly against the collar. Tighten the bolts, making sure the shroud rotates freely.

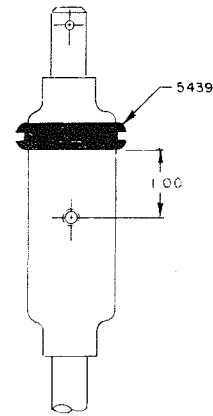


Figure 2

3. Locate the crank rod assembly (22), crank rod support (18), decal support (18A), crank rod bushing (21), crank rod spring (24), and two crank rod washers (25).

Remove the upper cotter pin (23) from the crank rod assembly (22). Insert the top (handle end) of the crank rod assembly (22) into the hole at the narrow end of the crank rod support (18). Twist the crank rod assembly through the support past both 90° angles in the rod assembly.

Install the Decal Plate (18A) on the crank rod assembly (22) so the decal faces toward the crank rod

### PARTS LIST — SNOW THROWER FACTORY ORDER NUMBER 6-6214

When ordering parts always list Part No. and Description.

Parts available only through Authorized Dealers.

**(Specifications subject to change without notice.)**

| ITEM NO. | PART NO. | DESCRIPTION   | NO. REQ'D. |
|----------|----------|---|------------|
| 1        | 104604   | Mounting Frame  | 1          |
| 4        | 908033   | Bolt, Hex $\frac{3}{8}$ -16 x $\frac{7}{8}$           | 4          |
| 5        | 915113   | Nut, $\frac{3}{8}$ -16 Eslok                          | 11         |
| 6        | 9596     | Idler Arm   | 1          |
| 7        | 920011   | Washer, $\frac{1}{2}$ Dia. SAE                        | 9          |
| 8        | 933504   | Hairpin Cotter  | 2          |
| 9        | 6651     | Spring  | 1          |
| 10       | 7451     | Idler Pulley  | 1          |
| 11       | 7450     | Belt Guide Bracket                                    | 1          |
| 12       | 908037   | Bolt, Hex $\frac{3}{8}$ -16 x $1\frac{3}{4}$          | 1          |
| 13       | 104662   | Spacer  | 1          |
| 14       | 6719     | Idler Pulley  | 1          |
| 15       | 908036   | Bolt, Hex $\frac{3}{8}$ -16 x $1\frac{1}{2}$          | 1          |
| 16       | 8158     | Drive Shaft Pulley                                    | 1          |
| 17       | 909862   | Set Screw — Nylok $\frac{5}{16}$ -18 x $\frac{5}{16}$ | 2          |
| 18       | 6426     | Crank Support   | 1          |
| 18A      | 104465   | Decal Plate   | 1          |
|          | 104461   | Decal — Snow Guide                                    | 1          |
| 19       | 7494     | Reinforcing Bar                                       | 2          |
| 20       | 908032   | Bolt, Hex $\frac{3}{8}$ -16 x $\frac{3}{4}$           | 4          |
| 21       | 5982     | Bushing   | 1          |
| 22       | 104457   | Crank Assembly  | 1          |
| 23       | 932016   | Cotter Pin, $\frac{1}{8}$ x $\frac{3}{4}$             | 2          |
| 24       | 2354     | Spring  | 1          |
| 25       | 920015   | Washer — $\frac{3}{4}$ SAE                            | 2          |
| 26       | 104460   | Cable   | 1          |
|          | 8874     | Cable Clip  | 1          |
|          | 960127   | Screw, #10-24 Whizlock                                | 1          |
| 27       | 104663   | Lift Tube   | 1          |
| 28       | 101461   | Lift Rod  | 1          |
| 29       | 9750     | Belt  | 1          |

**PARTS LIST — SNOW THROWER  
FACTORY ORDER NUMBER 6-6214**

When ordering parts always list Part No. and Description.  
Parts available only through Authorized Dealers.  
**(Specifications subject to change without notice.)**

| ITEM NO. | PART NO. | DESCRIPTION                     | NO. REQ'D. |
|----------|----------|---------------------------------|------------|
| 30       | 104470   | Wrapper Assembly                | 1          |
| 31       | 4467     | Auger Assembly                  | 1          |
| 32       | 101480   | Ball Bearing                    | 2          |
| 33       | 4477     | Auger Shaft Assembly            | 1          |
| 34       | 5359     | Grip                            | 1          |
| 35       | 2173     | Wheel Assembly                  | 2          |
| 36       | 1987     | Wheel                           | 2          |
| 37       | 1974     | Bushing                         | 2          |
| 38       | 920015   | Washer — 3/4 SAE                | 2          |
| 39       | 920011   | Washer — 1/2 SAE                | 5          |
| 40       | 932016   | Cotter Pin, 1/8 x 3/4           | 2          |
| 41       | 5157     | Wheel Support Assembly          | 1          |
| 42       | 933215   | Roll Pin, 1/4 x 1 1/4           | 1          |
| 43       | 933267   | Roll Pin, 5/32 x 1 1/4          | 1          |
| 44       | 101702   | Ball Bearing — Self Aligning    | 1          |
| 45       | 909862   | Set Screw, 5/16-18 x 5/16 Nylok | 2          |
| 46       | 909963   | Set Screw, 1/4-28 x 5/16        | 2          |
| 47       | 101782   | Ball Bearing — Self Aligning    | 1          |
| 48       | 933216   | Roll Pin, 1/4 x 1 3/8           | 1          |
| 49       | 900037   | Bolt — Carriage 5/16-18 x 3/4   | 6          |
| 50       | 915112   | Nut — 5/16-18 Nylok             | 6          |
| 51       | 6415     | Sprocket                        | 1          |
| 52       | 909848   | Set Screw, 1/4-20 x 1/4 Nylok   | 2          |
| 53       | 937014   | #9 Woodruff Key                 | 1          |
| 54       | 103526   | Drive Shaft                     | 1          |
| 55       | 6416     | Chain                           | 1          |
| 56       | 2174     | Idler Sprocket                  | 2          |
| 57       | 908060   | Bolt, Hex 1/2-13 x 1 3/4        | 2          |
| 58       | 915115   | Nut, 1/2-13 Nylok               | 2          |
| 59       | 6417     | Spacer                          | 1          |
| 60       | 6418     | Inner Guard                     | 1          |
| 61       | 2162     | Outer Guard                     | 1          |
| 62       | 1391     | Screw — Sems 1/4-20 x 3/8       | 3          |
| 63       | 5220     | Shroud Assembly                 | 1          |
| 64       | 1973     | Roller                          | 4          |
| 65       | 2163     | Spacer                          | 2          |
| 66       | 920007   | Washer, 1/4 SAE                 | 2          |
| 67       | 908006   | Bolt, Hex 1/2-20 x 1 1/4        | 2          |
| 68       | 915111   | Nut, 1/4-20 Nylok               | 2          |
| 69       | 915663   | Nut, 3/8-16 Elastic Stop        | 5          |
| 70       | 2165     | Deflector Assembly              | 1          |
| 71       | 910836   | Bolt, Round Head 1/4-20 x 1/2   | 2          |
| 72       | 915661   | Nut, 1/4-20 Elastic Stop        | 2          |
| 74       | 101447   | Cable Chute Clamp               | 2          |
| 75       | 103601   | Decal — Caution                 | 1          |
| 76       | 103174   | Decal — Wheel Horse             | 1          |
| 77       | 7495     | Top Extension Plate             | 1          |
| 78       | 900063   | Bolt, Carriage 3/8-16 x 1       | 9          |
| 79       | 920009   | Washer — 3/8 SAE                | 9          |
| 80       | 920013   | Washer — 5/8 SAE                | 1          |
| 81       | 932034   | Cotter Pin, 3/16 x 1            | 1          |
| 82       | 908002   | Bolt, Hex 1/4-20 x 5/8          | 1          |
| 83       | 915968   | Nut, 1/4-20 Hex Keps            | 1          |
| 84       | 920037   | Washer — 1/4 U.S.               | 1          |
| 85       | 100906   | Flange — Ball                   | 4          |
| 86       | 1005     | Key                             | 1          |
| 87       | 103552   | Plate                           | 2          |
| 88       | 908015   | Bolt, Hex 5/16-18 x 5/8         | 1          |
| 89       | 915112   | Nut, 5/16-18 E.S.               | 1          |
| 90       | 104049   | Decal — Safety                  | 1          |
| 91       | 4629     | Spring                          | 1          |
| 92       | 100653   | Eyebolt                         | 1          |
| 93       | 5439     | Grommet                         | 1          |

handle. Install the crank rod bushing (21), one crank rod washer (25), the crank rod spring (24), and the second crank rod washer on the crank rod assembly. Push (18A), (21), (25), (24) and (25) past both 90° angles in the rod assembly, and past the upper cotter pin hole. Reinstall the upper cotter pin (23).

Attach the crank and support assembly to the blower housing and support bracket using the preinstalled bolts, nuts and reinforcement plates. When attaching the support assembly to the blower housing, place one reinforcement bracket under the blower housing, and the other on top of the crank support.

Remove the lower cotter pin (23) and the lower washer (7) from the crank rod. Install grommet (90) on the crank rod assembly about 1" below the cable clip mounting hose (Fig. 2). Insert the lower end of the crank rod (22) through crank support bracket, compress the spring (24) by pushing in on crank rod handle, reinstall the washer (7) and the cotter pin (23).

4. The top extension plate mounts on the blower housing with carriage bolts, nuts and washers provided. The side extension plates are to increase the effective width of the snow thrower.

5. The Tach-a-matic front hitch is provided for easy installation and removal of the snow thrower without tools.

To install the snow thrower make sure that the

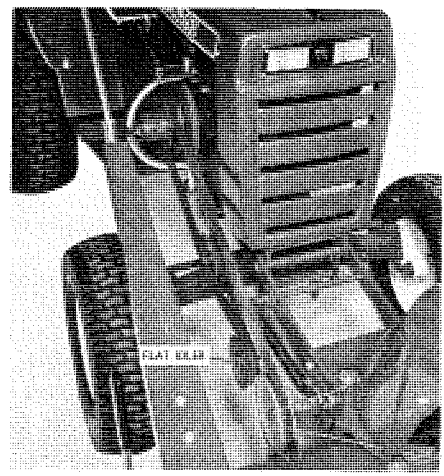
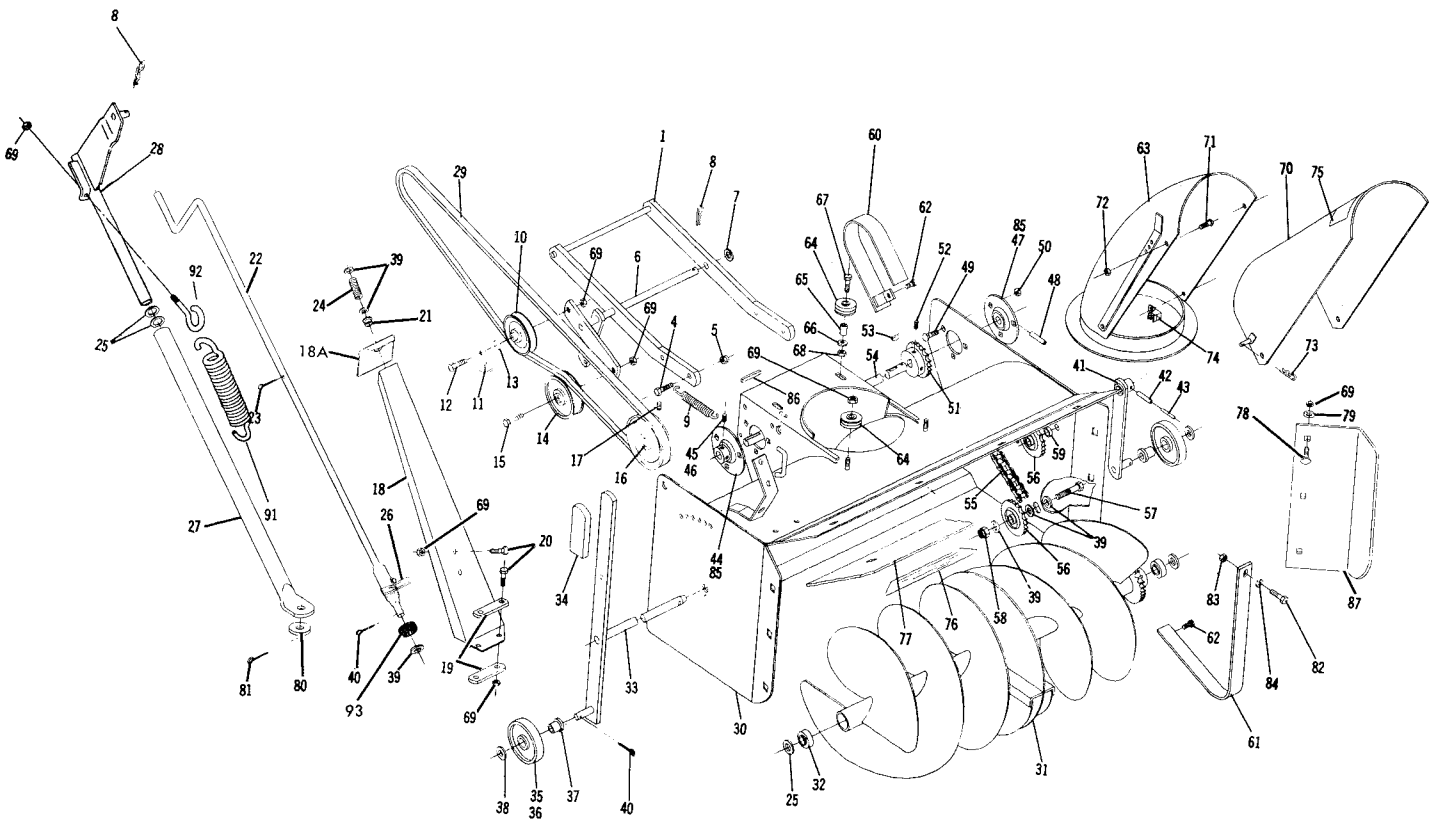


Figure 3

hitch latch is in the released position — this is done by pushing in on the lock release pin. Move the latch lever so the latch is open and release the lock pin to hold the latch in the open position. Insert and center the attachment shaft in the hitch slots and move the

PARTS DRAWING



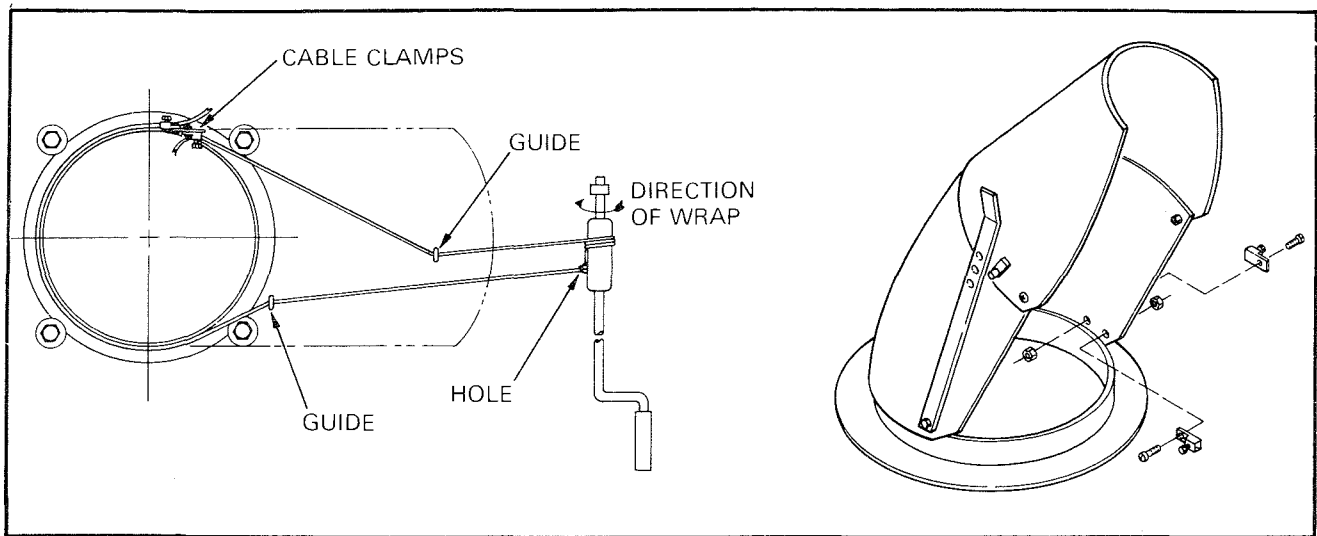


Figure 4

latch to the closed position allowing the lock release pin to seat the locking spacer to prevent the latch from opening.

Removal of the snow thrower is accomplished by pushing in on the release lock pin, which allows the latch to be moved to the open position.

6. With washers (25) in place on the lift rod, insert the lift rod (28) in the end of the lift tube (27) and fit the other end of the lift tube over the pin at the lower rear center of the blower housing. Secure it with the  $\frac{5}{8}$ " washer and  $\frac{3}{8}$ " x 1" cotter pin. Install the lift rod stud in the top hole of the bottom tractor lift arm and secure with the hairpin cotter.

**Note:** The washers (25), in effect, lengthen the lift tube to provide more ground clearance in transport position. Because of variations among tractor models, the lift tube may strike the tractor front axle when the snow thrower is raised to the transport position. This can be corrected by removing one or both washers as necessary.

To install the lift helper, hook one end of the spring (91), on the frame cross arm and the other end in the eyebolt (92). Thread the nut on the eyebolt until 1" of thread is exposed above the nut.

7. Raise the snow thrower to transport position. Fit the drive belt in the outer groove of the PTO clutch. Slip the lower strand of the belt between the belt guide bracket (11) and idler pulley (10) and attach the pulley to the idler arm (6) with the pre-assembled bolt and nut. Position the belt guide bracket perpendicular to the idler arm and tighten the nut securely.

8. Wrap the V-belt (29) around the drive pulley (16) and slide it hub-first on the drive shaft. Do not tighten the set screws at this time.

9. Hook spring (9) between the idler arm and the hole provided below the drive shaft in the blower frame. Rotate the idler arm assembly against spring tension and bring the lower belt strand over the flat idler as shown in figure 2. Align the drive pulley with the idler pulley and tighten both set screws.

### CABLE WRAPPING INSTRUCTIONS

1. Position cable clip No. 8874 around the center of the cable. Strip 4" of covering from each end of the cable. Place screw No. 920152 in the cable clip hole, then crimp the clip in place so it will not slip along the cable. Place internal tooth lockwasher No. 920152 under the clip and fasten the clip to the crank. The

cable should lay parallel to the crank, and above the screw.

2. With the shroud to the right, thread the cable from the upper side of the clip around the outside of the shroud and fasten to the outside cable clamp. See Fig. 3. Make sure it is inside the cable guide.

3. Looking down the crank, wrap the other half of the cable 3 complete turns around the crank in a counter-clockwise direction, finishing the last turn on the top of the crank.

4. Pull the cable behind the other guide and insert it in the remaining cable clamp. Pull it tight and tighten the clamp screw. Check the outside cable to make sure it is tight.

5. Turn the crank to make sure the shroud moves freely.

### OPERATING INSTRUCTIONS

Before starting the tractor engine, make sure the auger will rotate freely. This is especially important when the unit has been in use and left standing in the cold. The auger could be frozen in the housing and, if the PTO clutch is engaged under these conditions, the clutch or belt or both could be damaged. Also check the shroud to be sure it is free to turn.

Best snow throwing results are obtained with high auger speed and slow forward movement. Therefore, under normal conditions, operate the tractor in **first gear** at full engine speed. With automatic drive tractors, adjust speed to about one m.p.h.

Turning the pivot crank rotates the shroud from side to side to control the direction snow is thrown. The upper part of the shroud adjusts up and down to control the height and distance snow is thrown.

The height adjustment lever at the side of the snow thrower should be set according to conditions to prevent the blower housing from catching on uneven surfaces.

Under some conditions it will be necessary to coat the auger, shroud, and blower housing interior with

### ⚠ CAUTION ⚠

Never permit anyone to stand in front of the blower or discharge chute when the tractor engine is running. Keep children and pets away from the area while throwing snow. There may be objects in the snow being thrown which could cause injury to any one being struck by them.

paraffin or wax to prevent snow and ice from sticking to these surfaces.

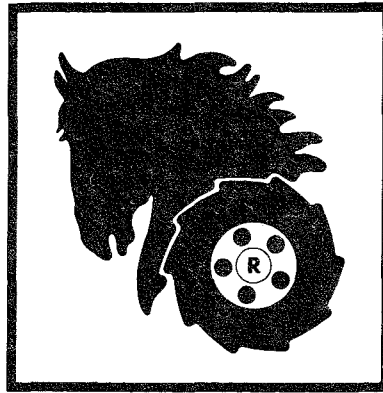
### **LUBRICATION AND MAINTENANCE**

Always shut off the tractor engine before lubricating or making any adjustment on the snow thrower. After the first hour of use, check and retighten all bolts, nuts, and set screws as necessary. Check chains and belt for proper alignment. Chain tension can be adjusted by loosening and shifting the lower idler

sprocket in the slot provided in the blower housing frame. Tighten nut securely after making the adjustment.

The drive chain, bearings and all movable parts should be lubricated frequently with a light grade of machine oil.

When storing the snow thrower, it is advisable to coat the auger with a heavy machine oil to prevent rust.



**WHEEL HORSE PRODUCTS, INC., 515 Ireland Road, South Bend, Indiana 46614**

PRINTED IN U. S. A. REVISED 11-74

P/L 1053 PART NO. 803958

---

Wheel Horse Service Bulletins 1961 - 1990: **#356** Issued: September 1983  
**Self-Aligning Ball Bearing (P/N 107744) Installation - Snowthrowers**

[Previous](#)   [Table of Contents](#)   [Next](#)

---

ST-326, ST-375, ST-376, STR-324,

**6-0200, 6-0201, 6-0202, 6-1211, 6-2211, 6-3211,**

**6-6211, 6-6212, 6-6213, 6-6214, 6-6215, 6-7212,**

**66-42ST01, 76-42ST01, 86-42ST01, 96-42ST01**

To All Dealers:

### 1. Subject

1.1 The current production self-aligning ball bearing, P/N 107744, is used as a substitute for bearings 4571, 100907, 101782, originally used on the above model snowthrowers. Because of a slight difference in the location of the spirol pin hole, some dealers and consumers have experienced difficulty installing it.

### 2. Service Action

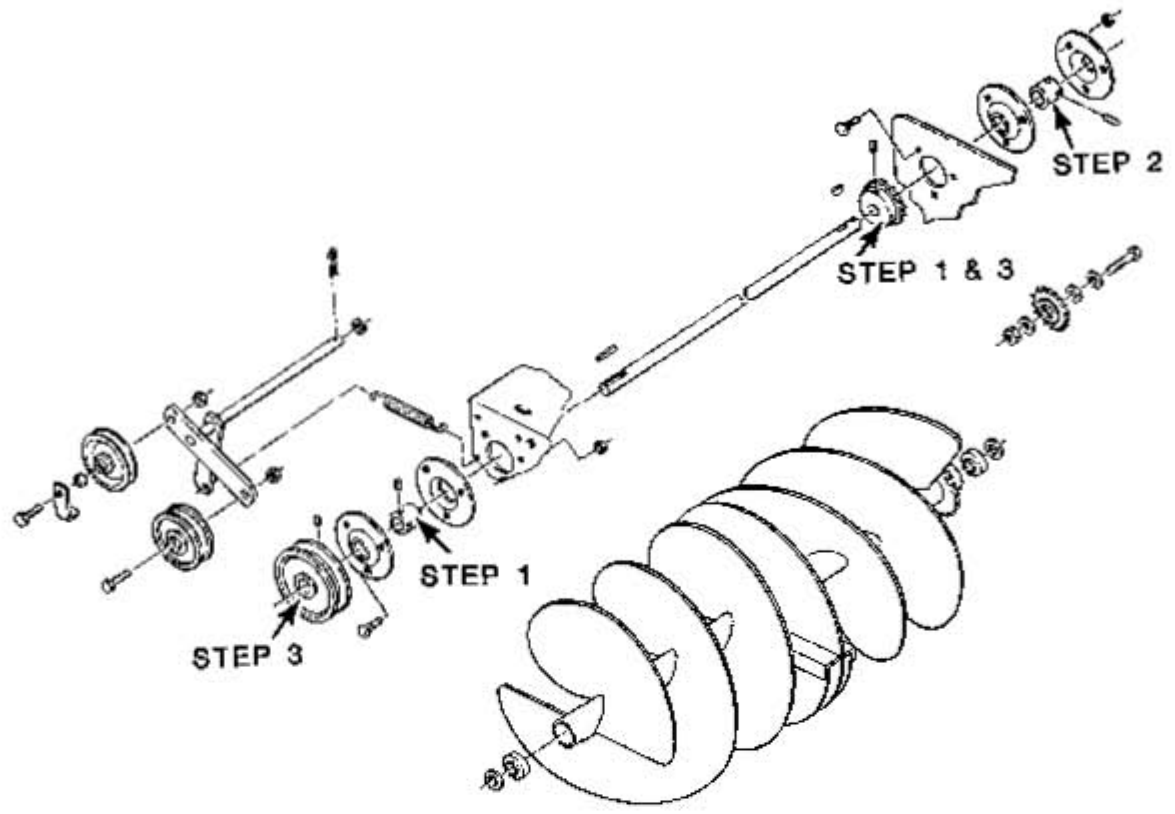
2.1 The procedure to use when replacing only this bearing follows. It is suggested that both drive shaft bearings be replaced at the same time, which eliminates the need to loosen parts simply for alignment purposes.

| ROUTING           | SERVICE<br>MANAGER | SALES<br>MANAGER | PARTS<br>MANAGER | CHIEF<br>MECHANIC | MECHANIC<br>NO 1 | MECHANIC<br>NO 2 | MECHANIC<br>NO 3 | MECHANIC<br>NO 4 | RETURN<br>THIS TO |
|-------------------|--------------------|------------------|------------------|-------------------|------------------|------------------|------------------|------------------|-------------------|
| INITIAL<br>HERE → |                    |                  |                  |                   |                  |                  |                  |                  |                   |

## Installation of P/N 107744 Bearing in

### Place of Original Bearing 4571, 100907, 101782

1. Loosen Set Screws - Be sure drive shaft is free to slide inside bearing and sprocket.
2. Remove and Replace 107744 Bearing - Drive spirol pin part way in to locate drive shaft.
3. Align Drive Pulley and Sprocket as Required - Drive spirol pin completely in and tighten set screws.





---

Wheel Horse Service Bulletins 1961 - 1990: **#377** Issued: December 1984  
**Snowthrower Low Friction Discharge Chute Collar**

[Previous](#)   [Table of Contents](#)   [Next](#)

---

All 37" Snowthrowers, VIN'S ST-374, ST-375, ST-376, STR-376, 6-1211, 6-6211, 6-6212, 6-0201, 6-0202 and 6-37SX01.

**1980 and earlier 42" Snowthrowers, VIN'S 6-6213, 6-6214, 6-6215, 66-42ST01, 76-42ST01, 86-42ST01, 96-42ST01 and 06-42ST01**

## 1. Subject

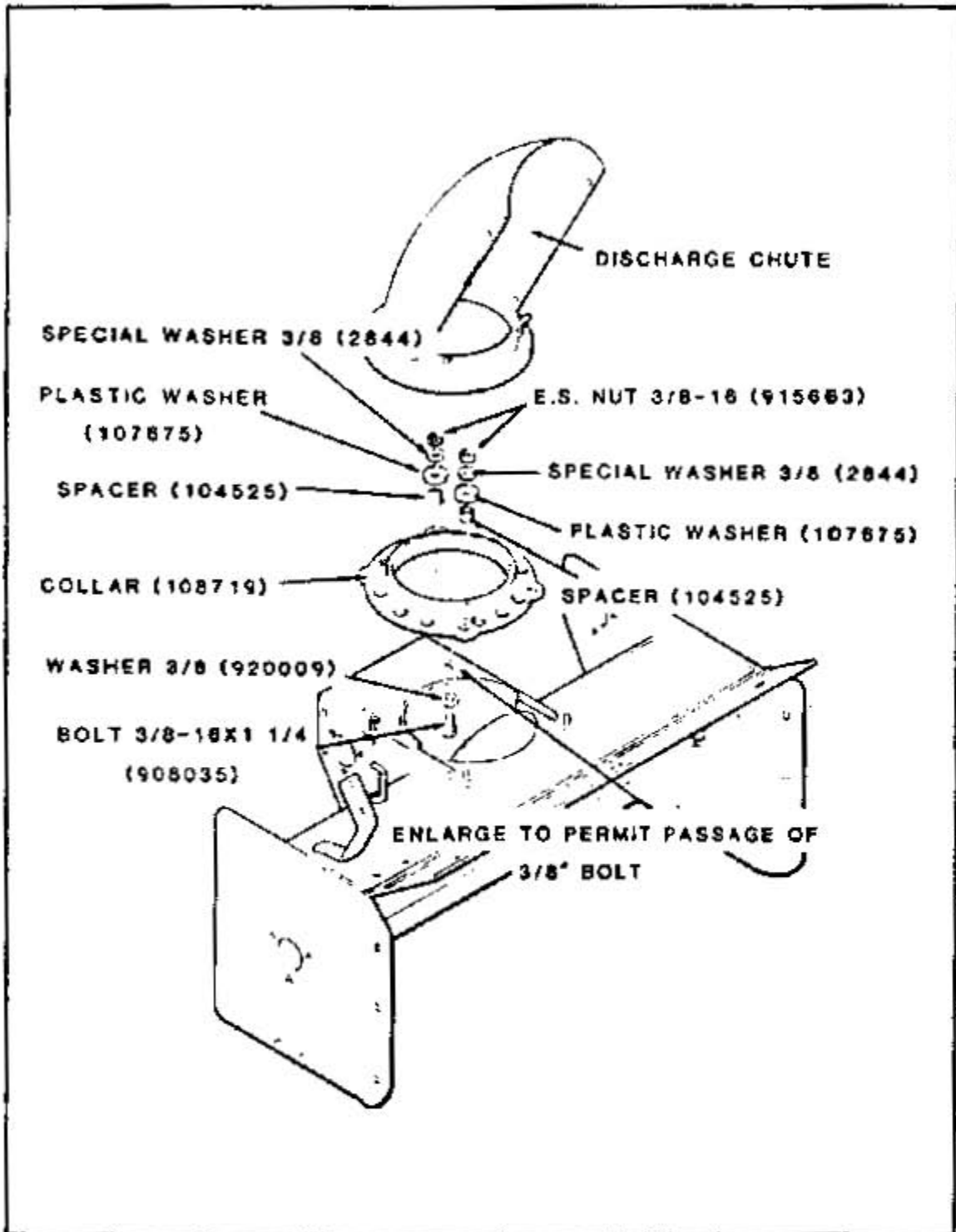
1.1 To convert older snowthrowers to the current production Low Friction Discharge Chute Collar, obtain and install parts as instructed below.

### 1.2 New parts necessary:

|     |        |                     |
|-----|--------|---------------------|
| (1) | 108719 | Collar              |
| (4) | 2844   | Special Washer 3/8  |
| (2) | 920009 | Washer 3/8          |
| (4) | 107675 | Plastic Washer      |
| (4) | 104525 | Spacer              |
| (2) | 908035 | Bolt 3/8-16 x 1-1/4 |
| (2) | 915663 | E.S. Nut 3/8-16     |

## 2. Service Action

2.1 Disassemble and remove Discharge Chute, Rollers and hardware (Fig.1).



(Fig. 1)

2.2 Install new Collar, Discharge Chute and hardware as shown in Figure 1. Make sure that the Chute Flange is properly located between the Plastic Washer and the Collar. DO NOT OVER-

TIGHTEN NUTS AND BOLTS. Also, check that the Directional Control Cable is properly returned to its correct position: refer to snowthrower owner's manual.

| ROUTING      | SERVICE MANAGER | SALES MANAGER | PARTS MANAGER | CHIEF MECHANIC | MECHANIC NO 1 | MECHANIC NO 2 | MECHANIC NO 3 | MECHANIC NO 4 | RETURN THIS TO |
|--------------|-----------------|---------------|---------------|----------------|---------------|---------------|---------------|---------------|----------------|
| INITIAL HERE |                 |               |               |                |               |               |               |               |                |

>

---

Wheel Horse Service Bulletins 1961 - 1990: **#431** Issued: October 1988  
**Service Assembly 115660 - 42" Snowthrower Drive Shaft with Greasable Bearings**

[Previous](#) [Table of Contents](#) [Next](#)

---

VIN'S 6-6213; 6-6214; 6-6215; 66-42ST01; 76-42ST01; 86-42ST01;

96-42ST01; 06-42ST01, 02, 04; 06-42SY01,02

## 1. Subject

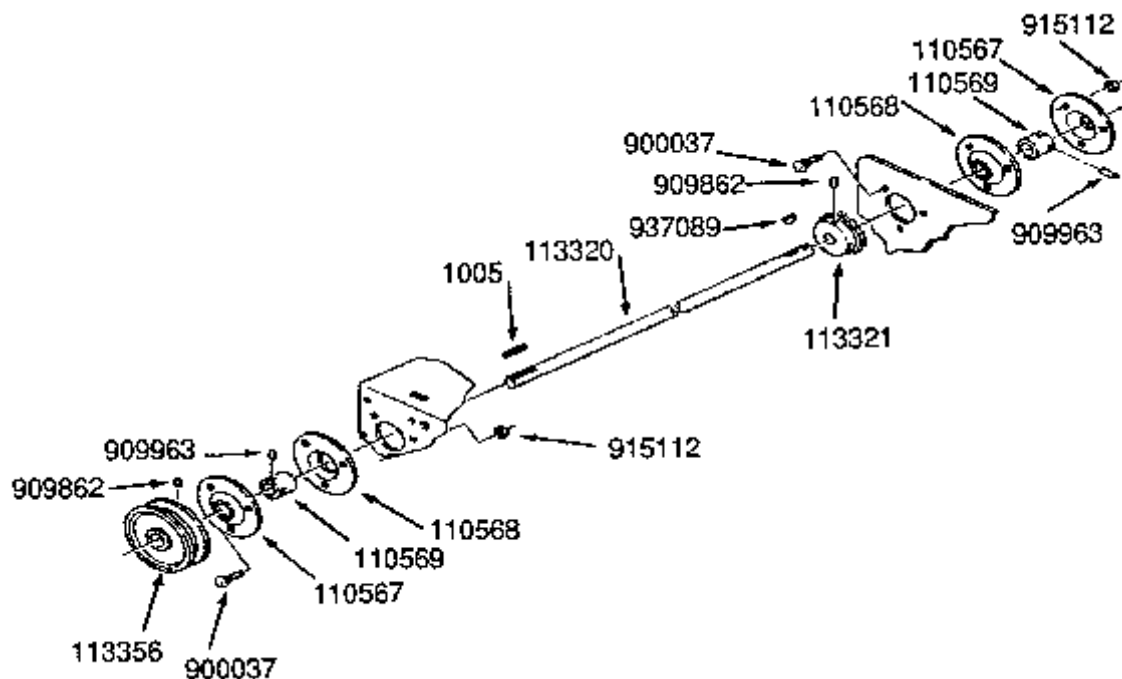
1.1 Optional Service Assembly Conversion Package is available to convert drive shaft non-greasable bearings to greasable bearings on VIN numbers listed above.

1.2 Optional Service Assembly can be ordered under Part Number 115660.

## 2. Service Action

2.1 Install optional Service Assembly as follows:

1. Remove original parts and install new parts as shown in Parts Illustration below. When installing set screws, apply supplied Loctite and tighten securely.



| ROUTING           | SERVICE<br>MANAGER | SALES<br>MANAGER | PARTS<br>MANAGER | CHIEF<br>MECHANIC | MECHANIC<br>NO 1 | MECHANIC<br>NO 2 | MECHANIC<br>NO 3 | MECHANIC<br>NO 4 | RETURN<br>THIS TO |
|-------------------|--------------------|------------------|------------------|-------------------|------------------|------------------|------------------|------------------|-------------------|
| INITIAL<br>HERE → |                    |                  |                  |                   |                  |                  |                  |                  |                   |