

PARTS LIST AND INSTRUCTIONS

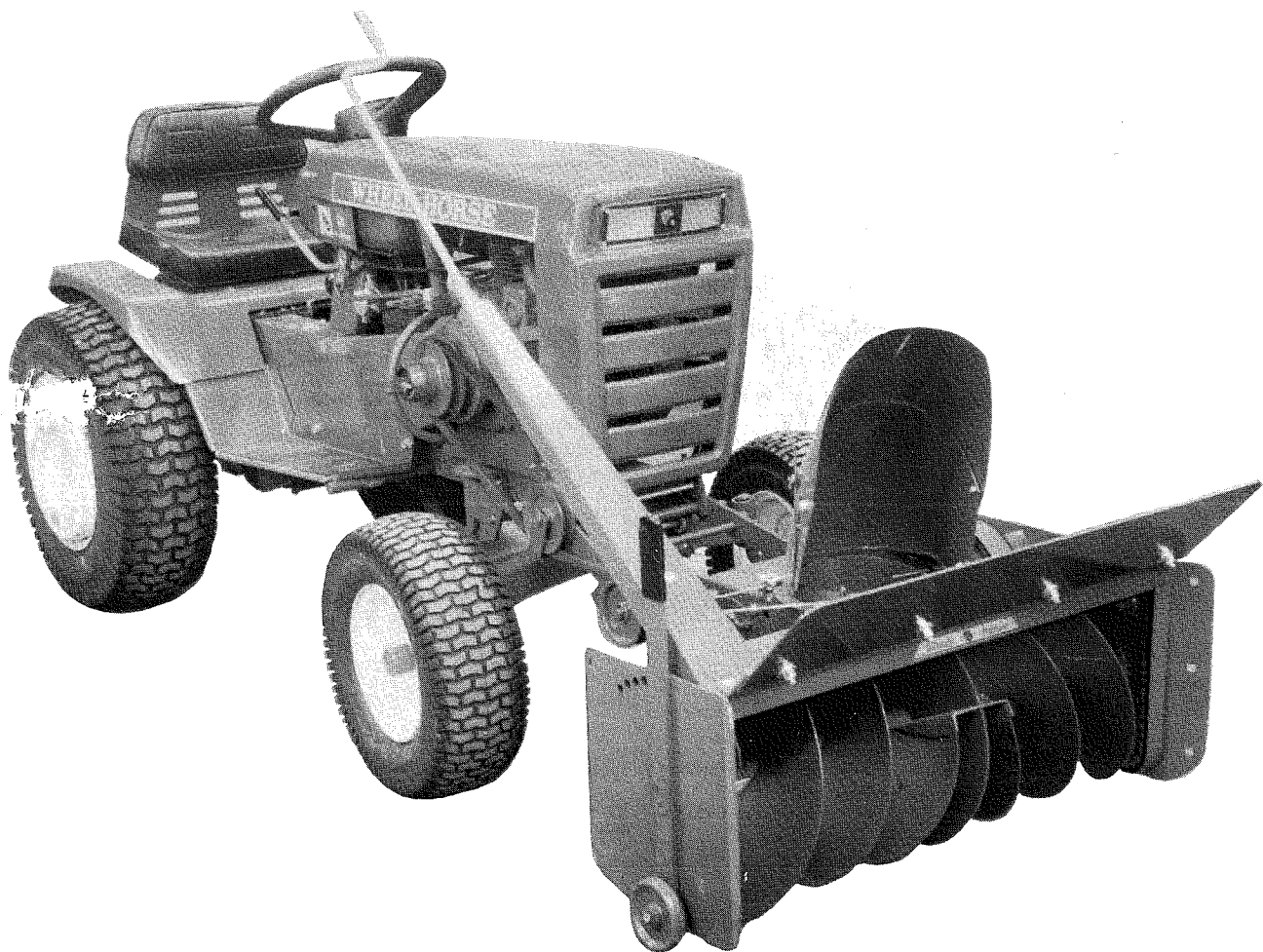


WHEEL HORSE

WHEEL-HORSE PRODUCTS, INC. • SOUTH BEND, IND.

SNOW THROWER

**MODEL
6-0201**



WHEEL HORSE SPARE PARTS WARRANTY

Wheel-Horse Products, Inc. guarantees both its new and its rebuilt spare parts as well as its assemblies against manufacturing defects 90 days from the date of purchase. Any new or rebuilt spare parts or any assembly manufactured by Wheel Horse will be replaced free of charge if found to be defective while in normal usage during the 90 days following the date of purchase. If the spare part or assembly is warranty replacement, our guarantee applies for the duration of the original warranty period or 90 days, whichever is longer.

Drive belts are also guaranteed for 90 days from date of purchase. Batteries and spare parts for engines are guaranteed separately by their manufacturer. This guarantee covers the replacement of defective parts only. All labor, transportation costs and dealer service charges are the responsibility of the owner. All claims must be handled through an authorized Wheel Horse dealer.

Wheel-Horse Products, Inc. reserves the right to change spare part specifications and/or to delete or substitute spare parts at any time without notice and without incurring obligation.

DESCRIPTION

This snow thrower is for use on B-80 & B-100 tractors.

When used on 1972 Long Frame Tractors 8-5541 Hitch Accessory is required.

When used on 1971 and older Long Frame Tractors 8-5551 Hitch Accessory is required.

ASSEMBLY AND MOUNTING INSTRUCTIONS

Item numbers used in these instructions refer to called out numbers in the exploded view drawing on page 4.

Remove all parts from the cartons and place on a clean flat surface.

1. Install the mounting frame assembly by inserting the end with the four bolt holes into the blower housing frame. The arms should extend upward from the blower housing as shown in figure 1. Use the bolts and nuts provided to secure in place.

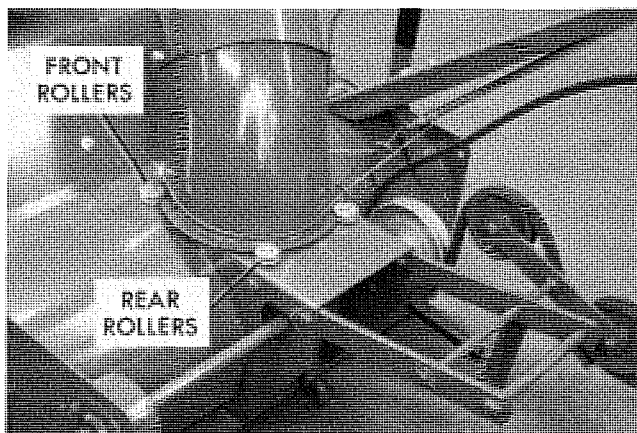


Figure 1

2. The shroud assembly is held by four rollers on top of the blower housing as shown in figure 1. To install the shroud, loosen and slide the two rear rollers back, fit the collar of the shroud into the front roller grooves, and move the rear rollers forward to fit snugly against the collar. Tighten the bolts, making sure the shroud rotates freely.

3. Attach the crank and support assembly to the blower housing and support bracket with the pre-installed bolts, nuts, and reinforcement plates. Place one of the plates (19) inside the blower housing and the other on top of the crank support mounting tab. Remove both preinstalled cotter pins (23) and the lower washer (7) from the crank. Insert the end of the crank rod through the hole in the support bracket and reinstall the washer (7) and cotter pin (23). Compress spring (24) against the end of the crank support and reinstall cotter pin (23) above the upper washer (7).

4. The Tach-a-matic front hitch is provided for easy installation and removal of the snow thrower without tools.

To install the snow thrower make sure that the hitch latch is in the released position — this is done by pushing in on the lock release pin, move the latch lever so the latch is open and release the lock pin to hold the latch in the open position. Insert and slide the attachment shaft in the hitch slots and move the latch to the closed position allowing the lock release pin to seat the locking spacer preventing the latch from opening.

Removal of the snow thrower is done by pushing in on the release lock pin, which allows the latch to be moved to the open position.

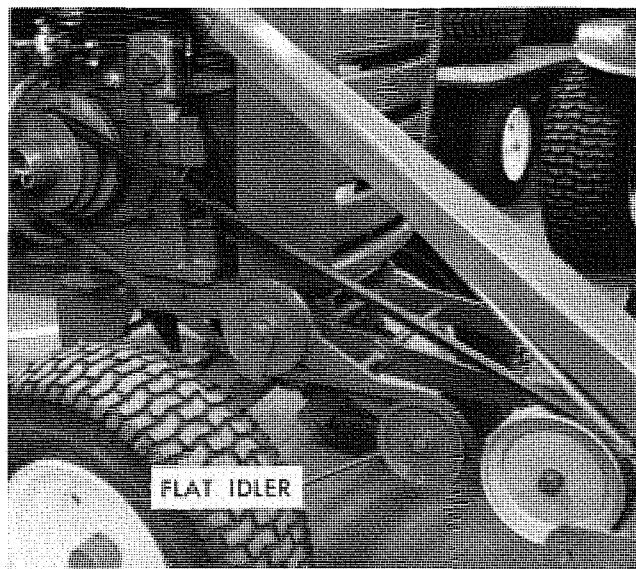


Figure 2

5. With washers (25) in place on the lift rod, insert the lift rod (28) in the end of the lift tube (27) and fit the other end of the lift tube over the pin at the lower rear center of the blower housing. Secure it with the $\frac{5}{8}$ " washer and $\frac{3}{16}$ " x 1" cotter pin. Install the lift rod stud in the top hole of the bottom tractor lift arm and secure with the hairpin cotter.

Note: The washers (25), in effect, lengthen the lift tube to provide more ground clearance in transport position. Because of variations among tractor models, the lift tube may strike the tractor front axle when the snow thrower is raised to the transport position. This can be corrected by removing one or both washers as necessary.

6. Raise the snow thrower to transport position. Fit the drive belt in the outer groove of the PTO clutch. Slip the lower strand of the belt between the belt guide bracket (11) and idler pulley (10) and attach the pulley to the idler arm (6) with the pre-assembled bolt and nut. Position the belt guide bracket perpendicular to the idler arm and tighten the nut securely.

7. Wrap the V-belt (29) around the drive pulley (16) and slide it hub-first on the drive shaft. Do not tighten the set screws at this time.

8. Hook spring (9) between the idler arm and the hole provided below the drive shaft in the frame. Rotate the idler arm assembly against spring tension and bring the lower belt strand over the flat idler as shown in figure 2. Align the drive pulley with the idler pulley and tighten both set screws.

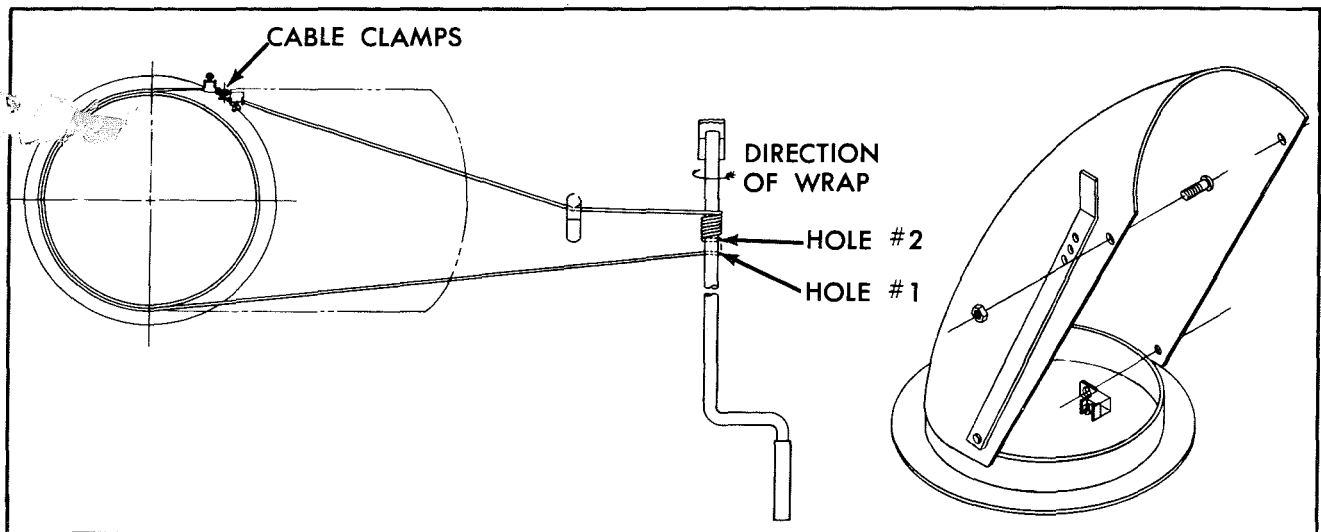


Figure 3

CABLE WRAPPING INSTRUCTIONS

1. Face the shroud to the right and thread one end of the cable from the left into the outside cable clamp. Tighten the clamp screw just enough to retain the cable.
2. Pull the cable around behind the shroud and thread the end through hole #1 and back through hole #2 in the crank (figure 3).
3. Wrap the cable seven (7) complete turns down the crank in the direction shown in figure 3, finishing the last turn on top of the crank.
4. Pull the cable behind the hook on the wrapper and insert it in the inside cable clamp. Tighten the clamp screw just enough to retain the cable.
5. Face the shroud forward. Grip both ends of the cable with pliers and pull the cable tight. Tighten both clamp screws securely. Turn the crank to check for free movement of the shroud.

The top extension plate mounts on the blower housing with carriage bolts, nuts and washers, provided. The side extension plates are to increase the effective width of the snow thrower.

OPERATING INSTRUCTIONS

Before starting the tractor engine, make sure the auger will rotate freely. This is especially important when the unit has been in use and left standing in the cold. The auger could be frozen in the housing and, if the PTO clutch is engaged under these conditions, the clutch or belt or both could be damaged. Also check the shroud to be sure it is free to turn.

Best snow throwing results are obtained with high auger speed and slow forward movement. Therefore, under normal conditions, operate the tractor in **first gear** at full engine speed. With automatic drive tractors, adjust speed to about one m.p.h.

Turning the pivot crank rotates the shroud from side to side to control the direction snow is thrown. The upper part of the shroud adjusts up and down to control the height and distance snow is thrown.

The height adjustment lever at the side of the snow thrower should be set according to conditions to prevent the blower housing from catching on uneven surfaces.

Under some conditions it will be necessary to coat the auger, shroud, and blower housing interior with paraffin or wax to prevent snow and ice from sticking to these surfaces.

CAUTION:

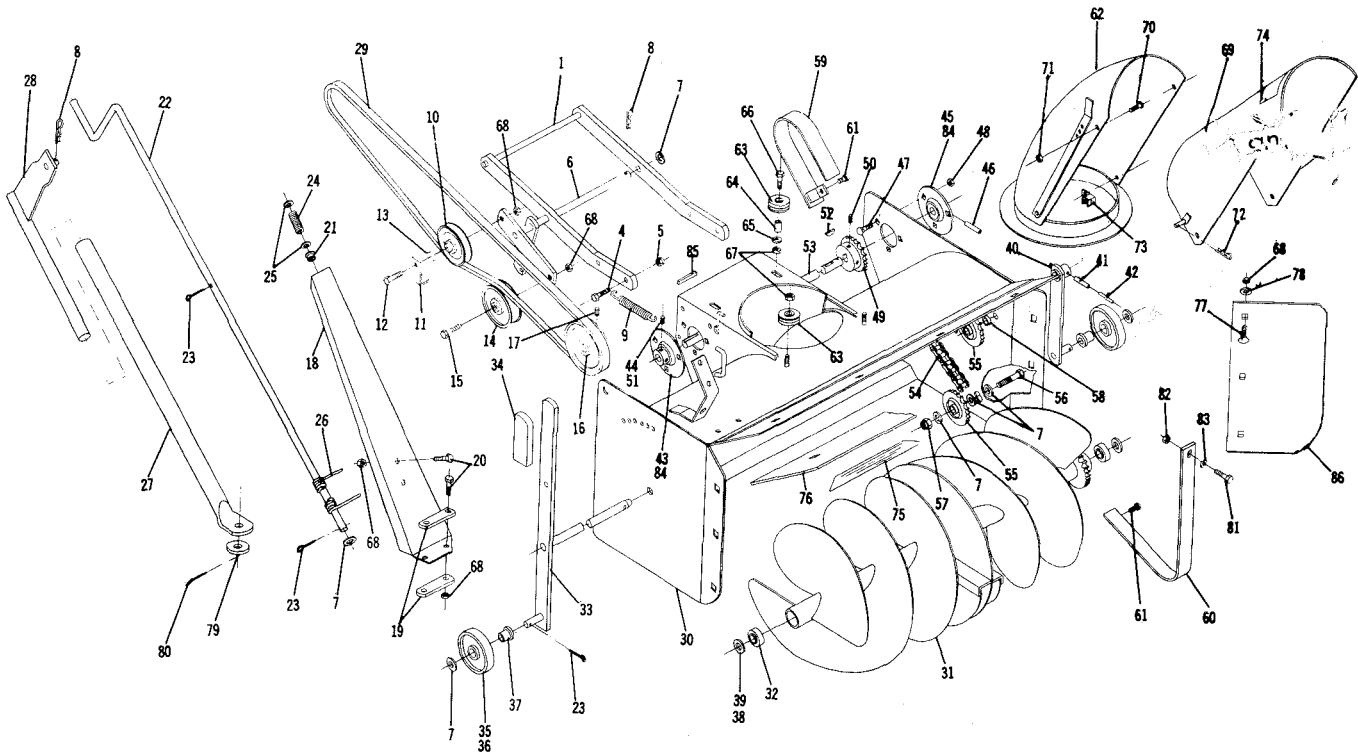
Never permit anyone to stand in front of the blower or discharge chute when the tractor engine is running. Keep children and pets away from the area while throwing snow. There may be objects in the snow being thrown which could cause injury to any one being struck by them.

LUBRICATION AND MAINTENANCE

Always shut off the tractor engine before lubricating or making any adjustment on the snow thrower. After the first hour of use, check and retighten all bolts, nuts, and set screws as necessary. Check chains and belt for proper alignment. Chain tension can be adjusted by loosening and shifting the lower idler sprocket in the slot provided in the blower housing frame. Tighten nut securely after making the adjustment.

The drive chain, bearings and all movable parts should be lubricated frequently with a light grade of machine oil.

When storing the snow thrower, it is advisable to coat the auger with a heavy machine oil to prevent rust.



6-0201 SNOW THROWER

When ordering parts always list Part No. and name of Part.
 Parts available only through Authorized Dealers.
 (Specifications subject to change without notice.)

Item No.	Part No.	Description	No. Req'd.	Item No.	Part No.	Description	No. Req'd.
1	102588	Mounting Frame	1	47	900037-4	Bolt Carriage $\frac{5}{16}$ -18 x $\frac{3}{4}$	1
4	908033-4	Bolt Hex $\frac{3}{8}$ -16 x $\frac{7}{8}$	4	48	915112-6	Nut — $\frac{5}{16}$ -18 Eslok	6
5	915113-6	Nut Nylok $\frac{3}{8}$ -16	11	49	6415	Sprocket	1
6	9596	Idler Arm	1	50	909848-5	Set Screw $\frac{1}{4}$ -20 x $\frac{1}{4}$ Nylok	2
7	920011-4	Washer $\frac{1}{2}$ Dia.	9	51	909963-5	Set Screw $\frac{1}{4}$ -28 x $\frac{3}{16}$	2
8	933504-4	Hairpin Cotter	2	52	937014	Key #9 Woodruff	2
9	6651	Spring	1	53	103637	Shaft — Drive	1
10	7451	Pulley — Idler	1	54	6416	Chain	1
11	7450	Bracket — Belt Guide	1	55	2174	Idler Sprocket	2
12	908037-4	Bolt Hex $\frac{3}{8}$ -16 x $1\frac{3}{4}$	1	56	908060-4	Bolt Hex $\frac{1}{2}$ -13 x $1\frac{3}{4}$	2
13	7672	Spacer	1	57	915115-6	Nut $\frac{1}{2}$ -13 Eslok	2
14	6719	Pulley — Idler	1	58	6417	Spacer	1
15	908036-4	Bolt Hex $\frac{3}{8}$ -16 x $1\frac{1}{2}$	1	59	6418	Guard — Inner	1
16	8158	Pulley — Drive Shaft	1	60	2162	Guard — Outer	1
17	909862-5	Set Screw — Nylok $\frac{3}{16}$ -18 x $\frac{5}{16}$	2	61	1391	Screw — Sems $\frac{1}{4}$ -20 x $\frac{3}{8}$	4
18	6426	Support — Crank	1	62	5220	Shroud Ass'y.	1
19	7494	Bar — Reinforcing	2	63	1973	Roller	4
20	908032-4	Bolt Hex $\frac{3}{8}$ -16 x $\frac{3}{4}$	4	64	2163	Spacer	2
21	5982	Bushing — Nyliner	1	65	920007-4	Washer $\frac{1}{4}$ SAE	2
22	6413	Crank	1	66	908006-4	Bolt Hex $\frac{1}{2}$ -20 x $1\frac{1}{4}$	2
23	932016-4	Cotter Pin $\frac{1}{8}$ x $\frac{3}{4}$	4	67	915111-6	Nut $\frac{1}{4}$ -20 Eslok	2
24	2354	Spring	1	68	915663-4	Nut $\frac{3}{8}$ -16 Elastic Stop	10
25	920015-4	Washer — $\frac{3}{4}$ SAE	4	69	2165	Deflector Ass'y.	1
26	4795	Cable	1	70	910836-4	Bolt Round Head $\frac{1}{4}$ -20 x $\frac{1}{2}$	2
27	102729	Tube — Lift	1	71	915661-4	Nut $\frac{1}{4}$ -20 Elastic Stop	2
28	1986	Lift Rod	1	72	933503-4	Hairpin Cotter	1
29	102743	Belt	1	73	101447	Clamp — Cable — Chute	2
30	101964	Wrapper Ass'y.	1	74	103601	Decal — Caution	1
31	2172	Auger Ass'y.	1	75	103174	Decal — Wheel Horse	1
32	101480	Ball Bearing	2	76	7497	Plate — Top Extension	1
33	5155	Auger Shaft Ass'y.	1	77	900063-4	Bolt Carriage $\frac{3}{8}$ -16 x 1	1
34	5359	Grip	1	78	920009-4	Washer $\frac{3}{8}$ SAE	10
35	2173	Wheel & Bushing Ass'y.	2	79	920013-4	Washer $\frac{5}{8}$ SAE	1
36	1987	Wheel	2	80	932034-4	Cotter Pin $\frac{3}{16}$ x 1	1
37	1974	Bushing	2	81	908002-4	Bolt Hex $\frac{1}{4}$ -20 x $\frac{3}{8}$	1
38	920225-4	Washer .080 Thick	2	82	915968-4	Nut $\frac{1}{4}$ -20 Hex Keps	1
39	920015-4	Washer $\frac{3}{4}$	2	83	920037-4	Washer $\frac{1}{4}$ U.S.	1
40	5157	Wheel Support Ass'y.	1	84	100906	Flange — Ball	1
41	933215	Roll Pin $\frac{1}{4}$ x $1\frac{1}{4}$	1	85	1005	Key $\frac{3}{16}$ x 1	1
42	933267	Roll Pin $\frac{3}{32}$ x $1\frac{1}{4}$	1	86	103552	Plate — Extension	2
43	101702	Ball Bearing — Self Aligning	1	87	908015-4	Bolt — Hex $\frac{3}{16}$ -18 x $\frac{5}{8}$	1
44	909862-5	Set Screw $\frac{3}{16}$ -18 x $\frac{3}{16}$ Nylok	2	88	915112-4	Nut — Hex $\frac{5}{16}$ -18	1
45	101782	Ball Bearing — Self Aligning	1	89	104049	Decal — Safety	1
46	933216	Roll Pin $\frac{1}{4}$ x $1\frac{3}{8}$	1				

Wheel Horse Service Bulletins 1961 - 1990: **#356** Issued: September 1983
Self-Aligning Ball Bearing (P/N 107744) Installation - Snowthrowers

[Previous](#) [Table of Contents](#) [Next](#)

ST-326, ST-375, ST-376, STR-324,

6-0200, 6-0201, 6-0202, 6-1211, 6-2211, 6-3211,

6-6211, 6-6212, 6-6213, 6-6214, 6-6215, 6-7212,

66-42ST01, 76-42ST01, 86-42ST01, 96-42ST01

To All Dealers:

1. Subject

1.1 The current production self-aligning ball bearing, P/N 107744, is used as a substitute for bearings 4571, 100907, 101782, originally used on the above model snowthrowers. Because of a slight difference in the location of the spirol pin hole, some dealers and consumers have experienced difficulty installing it.

2. Service Action

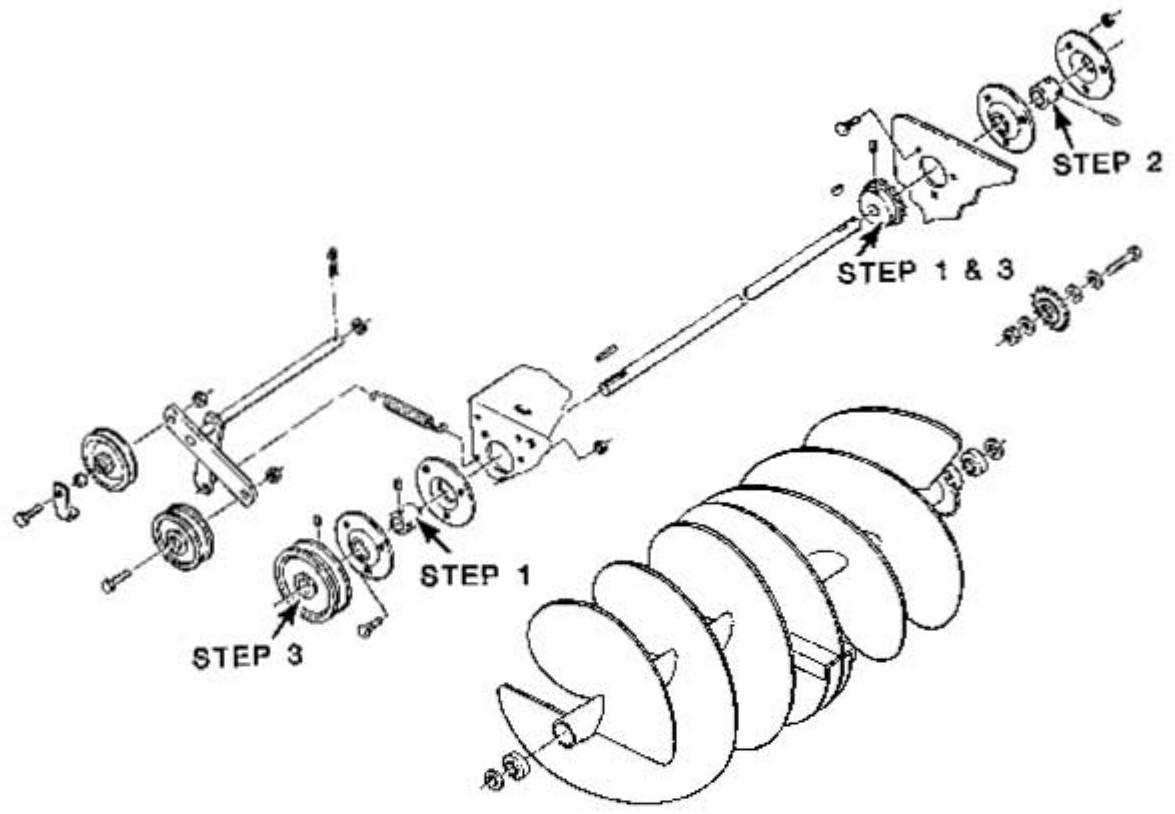
2.1 The procedure to use when replacing only this bearing follows. It is suggested that both drive shaft bearings be replaced at the same time, which eliminates the need to loosen parts simply for alignment purposes.

ROUTING	SERVICE MANAGER	SALES MANAGER	PARTS MANAGER	CHIEF MECHANIC	MECHANIC NO 1	MECHANIC NO 2	MECHANIC NO 3	MECHANIC NO 4	RETURN THIS TO
INITIAL HERE →									

Installation of P/N 107744 Bearing in

Place of Original Bearing 4571, 100907, 101782

1. Loosen Set Screws - Be sure drive shaft is free to slide inside bearing and sprocket.
2. Remove and Replace 107744 Bearing - Drive spirol pin part way in to locate drive shaft.
3. Align Drive Pulley and Sprocket as Required - Drive spirol pin completely in and tighten set screws.



Wheel Horse Service Bulletins 1961 - 1990: **#377** Issued: December 1984
Snowthrower Low Friction Discharge Chute Collar

[Previous](#) [Table of Contents](#) [Next](#)

All 37" Snowthrowers, VIN'S ST-374, ST-375, ST-376, STR-376, 6-1211, 6-6211, 6-6212, 6-0201, 6-0202 and 6-37SX01.

1980 and earlier 42" Snowthrowers, VIN'S 6-6213, 6-6214, 6-6215, 66-42ST01, 76-42ST01, 86-42ST01, 96-42ST01 and 06-42ST01

1. Subject

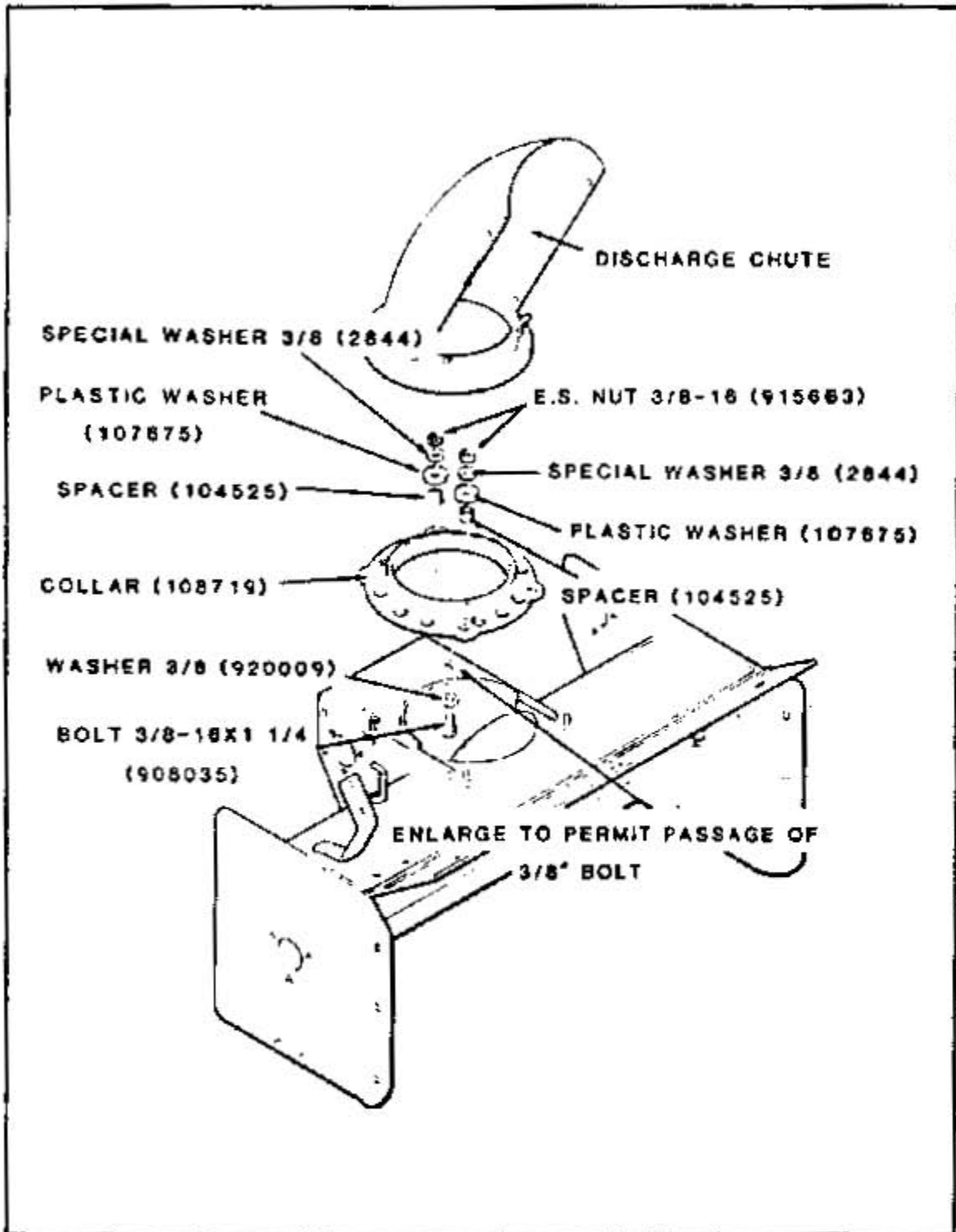
1.1 To convert older snowthrowers to the current production Low Friction Discharge Chute Collar, obtain and install parts as instructed below.

1.2 New parts necessary:

(1)	108719	Collar
(4)	2844	Special Washer 3/8
(2)	920009	Washer 3/8
(4)	107675	Plastic Washer
(4)	104525	Spacer
(2)	908035	Bolt 3/8-16 x 1-1/4
(2)	915663	E.S. Nut 3/8-16

2. Service Action

2.1 Disassemble and remove Discharge Chute, Rollers and hardware (Fig.1).



(Fig. 1)

2.2 Install new Collar, Discharge Chute and hardware as shown in Figure 1. Make sure that the Chute Flange is properly located between the Plastic Washer and the Collar. DO NOT OVER-

TIGHTEN NUTS AND BOLTS. Also, check that the Directional Control Cable is properly returned to its correct position: refer to snowthrower owner's manual.

ROUTING	SERVICE MANAGER	SALES MANAGER	PARTS MANAGER	CHIEF MECHANIC	MECHANIC NO 1	MECHANIC NO 2	MECHANIC NO 3	MECHANIC NO 4	RETURN THIS TO
INITIAL HERE									

>