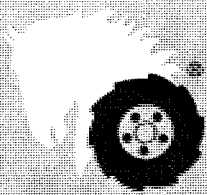


PARTS LIST AND INSTRUCTIONS



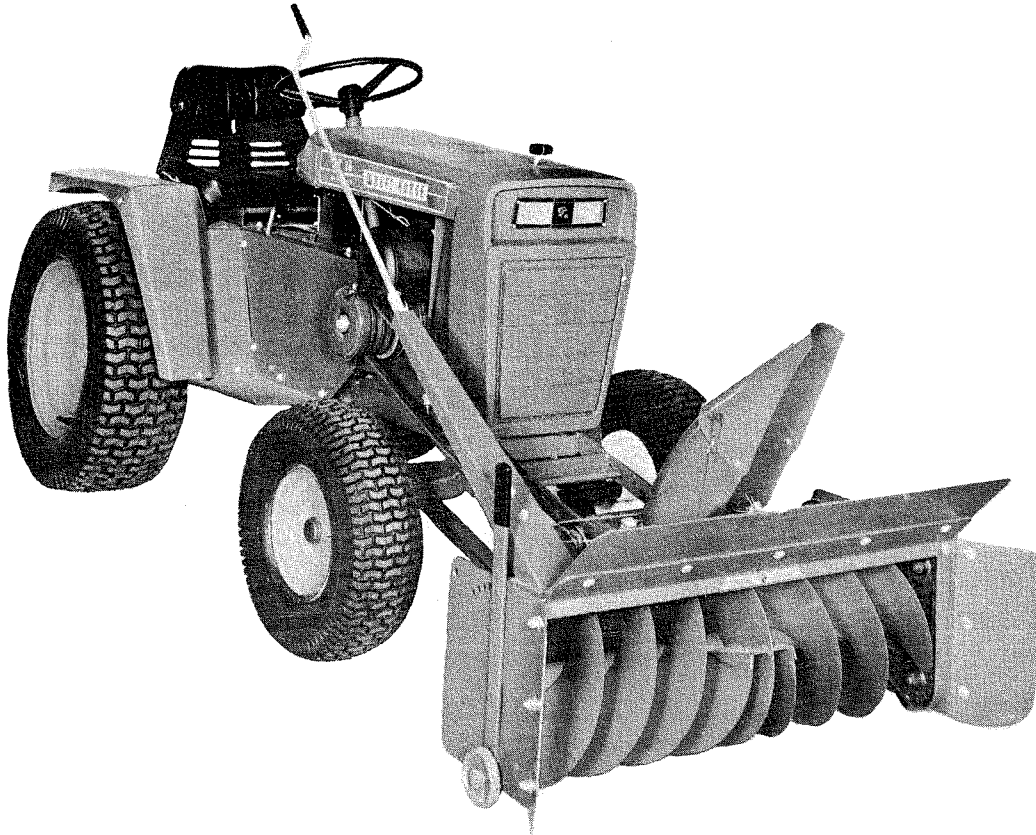
Wheel Horse

WHEELHORSE PRODUCTS, INC. • SOUTH BEND, IND.

SNOW THROWER

COMPLETING PACKAGE

MODEL
6-9122



DESCRIPTION

The snow thrower is shipped in two separate cartons, a basic unit, and a complete package. This carton contains the completing package and must be used with the basic unit No. 6-6212.

ASSEMBLY AND MOUNTING

Remove all parts from the cartons and place on a clean flat surface. All loose parts are identified in Figure 1.

1. Mount the top and side extension plates as shown in Figure 2. Secure in place with the bolts, washers and nuts provided.

2. Install the mounting frame assembly by bolting the end with the four bolt holes to the blower housing frame. The arms should extend upward from the blower housing as shown in Fig. 2. Use the bolts and nuts provided to secure in place. Place one shim (#4774 no Cutout) between the LEFT arm and outside the blower housing. Place the remaining shim (#9696 with Cutout) between the RIGHT arm and the outside of the blower housing.

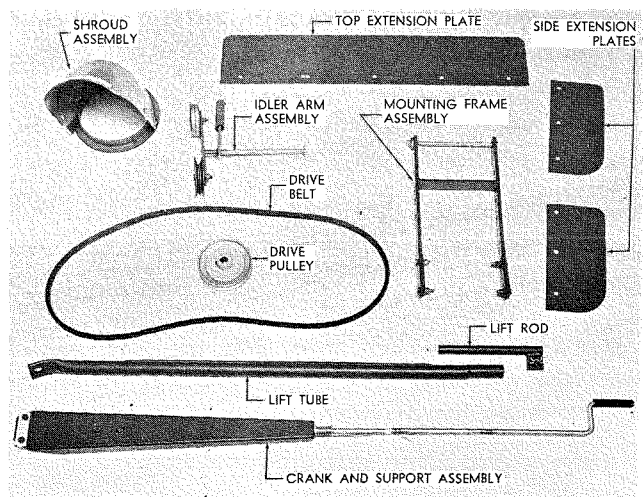


Figure 1

3. Loosen the two $\frac{1}{4}$ " bolts holding the rear rollers. Slide the roller back and insert the ring on the shroud assembly into the roller grooves. Adjust the rollers forward to fit snug against the shroud ring. Tighten the bolts, the shroud should turn freely. See Fig. 2.

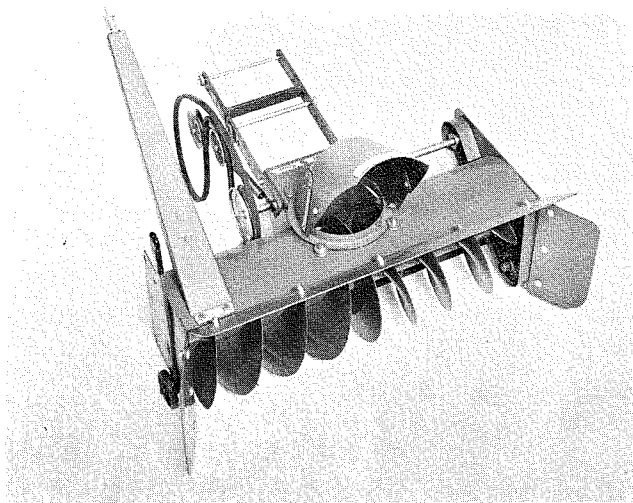


Figure 2

4. Insert idler arm assembly shaft through the hole in the right side of the mounting frame assembly. The assembly is held in place with a $\frac{1}{2}$ " washer and a hairpin cotter, items 17 and 18, see the exploded view drawing. Stretch the spring that is connected to the idler arm and hook the loose end into the hole provided in the blower housing frame.

5. The "V" belt must be wrapped around the pulley before sliding it on the drive shaft. Slide the pulley on to the drive shaft. Do not tighten the pulley set screw at this time.

6. Attach the crank and support assembly to the blower housing line up the holes in the crank support with the two holes in the blower housing and the two holes in the bracket. Two reinforcing plates are used to support the assembly to the blower housing. One is placed directly under the bolt heads and the other is placed on the inside of the blower housing, see Fig. 2 and the exploded view drawing.

Insert the crank rod through the hole in the crank support bracket, and retain it with the $\frac{1}{2}$ " washer and hairpin cotter.

7. Remove the $8\frac{1}{2}$ inch long rod and spacer from the mounting frame. Roll the unit up to the tractor. Align the mounting frame so that the arms of the mounting frame straddle the tractor frame. See Fig. 3. Roll the snow thrower back into the tractor to allow the belt to be placed over the attachment clutch and into the belt groove.

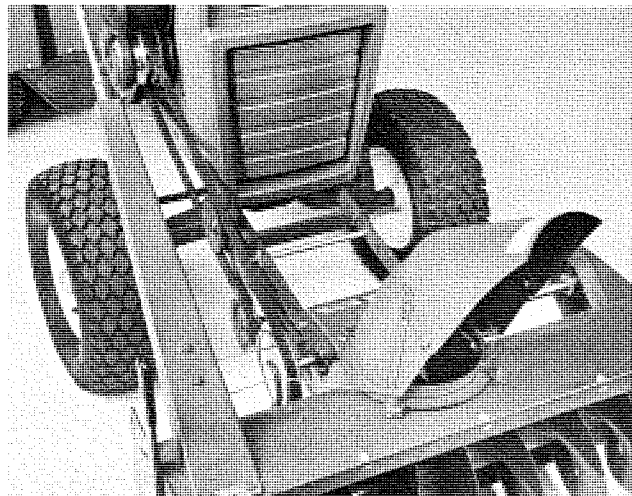


Figure 3

Roll the snow thrower forward till the holes in the mounting arms align with the first set of holes of the tractor frame. Turn wheels all the way to the left. Insert the rod and spacer through the mounting frame and tractor frame. Hold in place with the $\frac{3}{8}$ -16 nylok nut. See Fig. 3.

8. Wrap the belt around the idler pulleys as shown in Fig. 3. **NOTE: Adjust blower drive pulley in or out to align with the idler pulleys, tighten set screws.**

9. Slide the lift rod into the lift tube. Fasten the lift tube over the pin located at the lower rear center of the blower housing. It is held with $\frac{5}{8}$ washer and $\frac{3}{16} \times 1$ " cotter pin.

10. Install lift rod into the bottom hole of the long tractor lift lever arm. Secure with the hairpin cotter.

CABLE WRAPPING INSTRUCTIONS:

1. Face Shroud, Part No. 5220 to the right. (See Figure 4.)
2. Thread Cable, Part No. 4795, end "A" up under the Double Speed Nut, Part No. 6433, and tighten screws just enough to retain cable.
3. Pull cable around the shroud and thread end "B" of cable through hole #1 then back through hole #2 in Crank, Part No. 8157, and then wrap seven (7) complete turns in direction shown in Figure 4. Finish last turn on top of crank. Pull cable end "B" behind the hook on the wrapper assembly and thread up under the double speed nut. Retighten screws just enough to retain cable.
4. Face shroud forward and grip both ends of cable with pliers and pull until cable is tight. Tighten screws in speed nut securely.

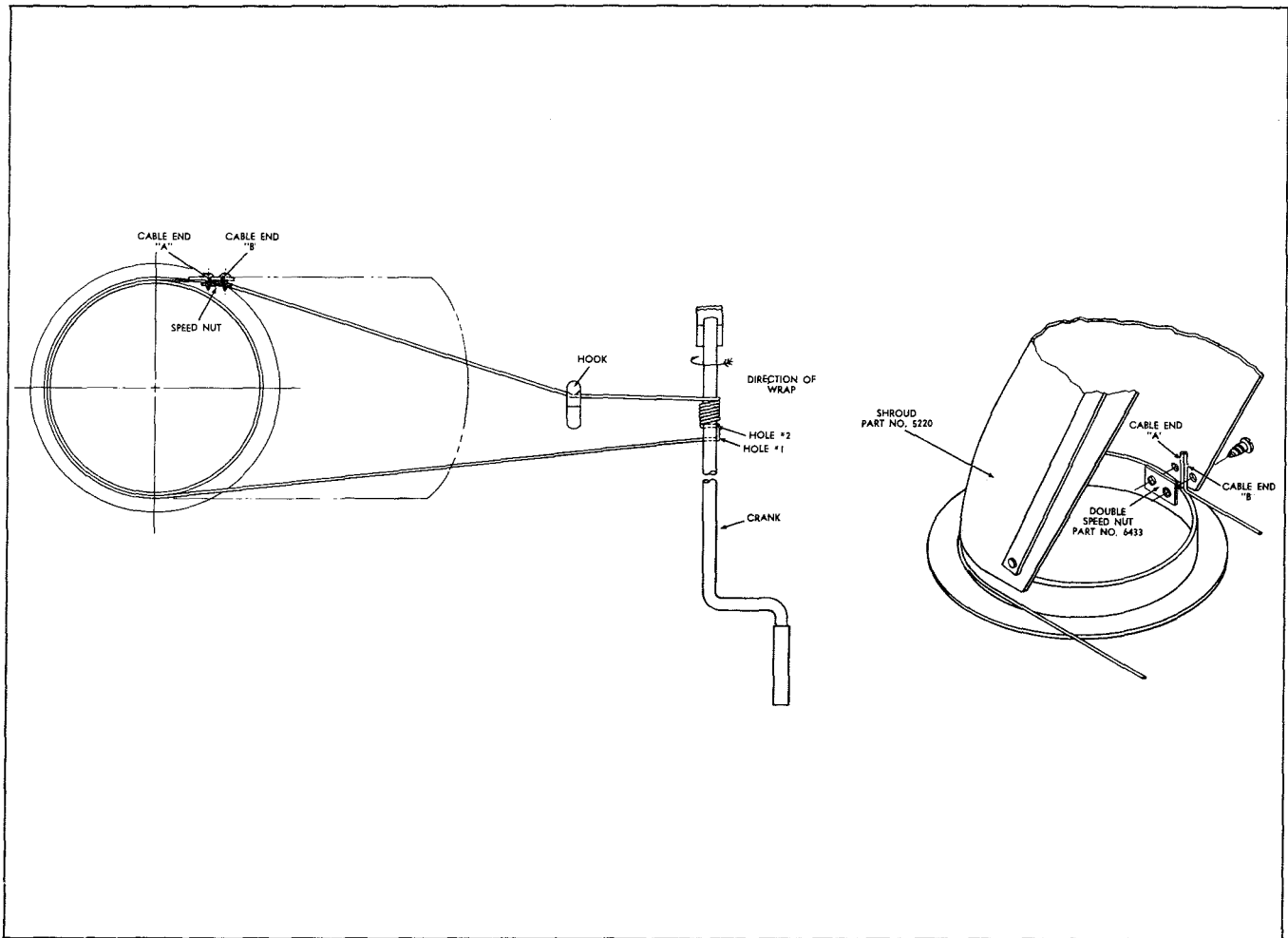


Figure 4

The adjustable shroud allows the operator to control the direction the snow may be thrown by turning the convenient pivot crank. The upper part of the snow shroud is adjustable to deflect the snow in an upward or downward direction depending upon conditions. There are wheels on each side for raising or lowering to prevent the Snow Thrower from catching on uneven surfaces. Under some conditions it will be necessary to coat the auger, shroud and the inside with paraffin or wax to prevent snow and ice from sticking. Best results are obtained with slow forward movement of the tractor and high auger speed, therefore under normal conditions the tractor should be operated with full throttle and the speed should be about one m.p.h.

CAUTION:

ELECTRIC CLUTCH — Be especially careful after the blower has set outdoors after use. The auger could be frozen to the housing. If this condition exists it

could cause damage to the clutch or belt. Check auger before starting, it should rotate freely.

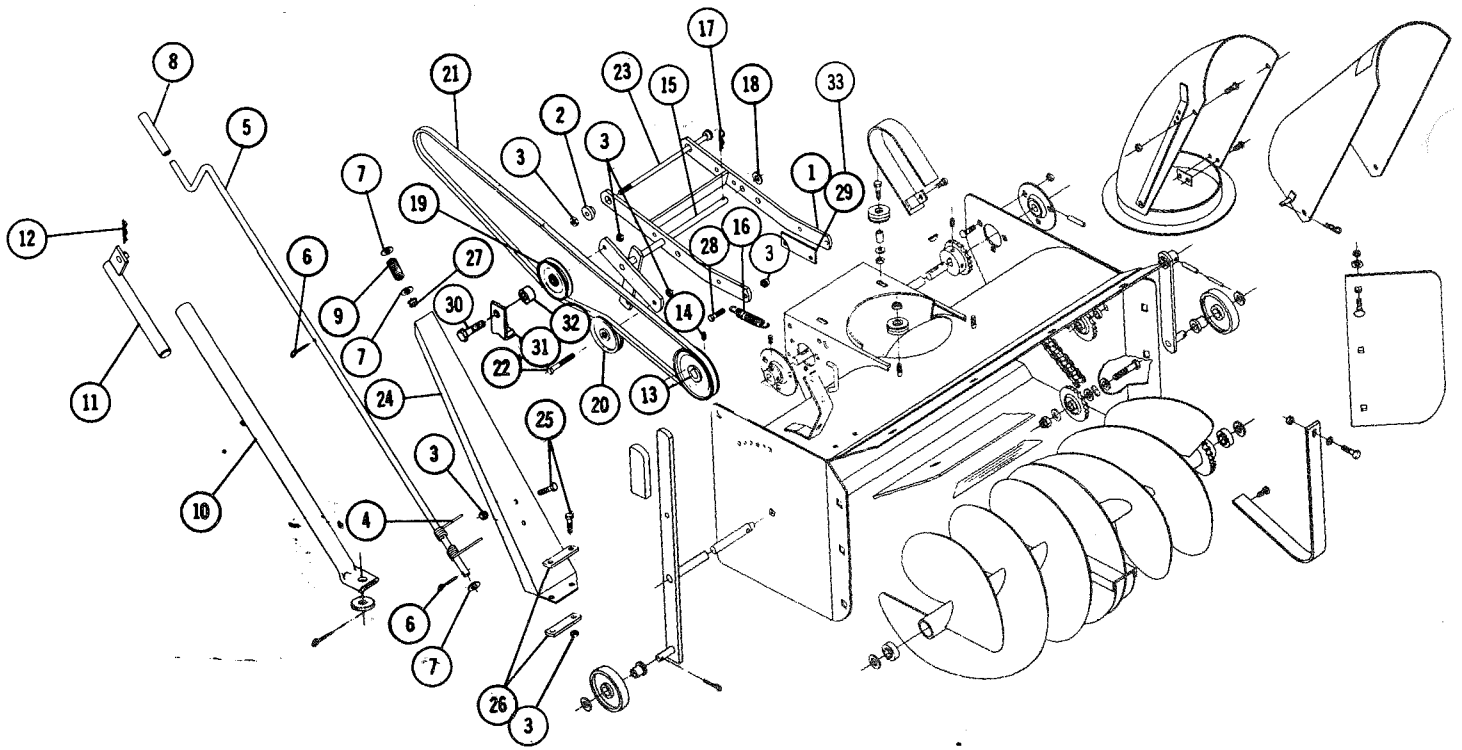
Always shut off engine before making any adjustment or lubrication.

After the first hour of use recheck all bolts, nuts, and set screws — tighten securely. Check chains and belt alignment. Keep children and pets away while operating, there may be rocks or metal in the snow which could be thrown forward or out the chute. Never permit anyone to stand in front of blower when engine is running.

When snow drifts are high and hard-packed, the side plate extensions may be removed, to prevent the tractor from being pulled sideways into the drift.

LUBRICATION

The drive chain should be oiled with a light grade of machine oil. All other bearings and movable parts should be oiled frequently. In storing the Snow Thrower, it is advisable to coat the auger with a heavy machine oil to prevent rust.



6-9122 SNOW THROWER — COMPLETING PACKAGE

When ordering parts always list Part No. and Name of Part.

Parts available only through Authorized Dealers.

(Specifications subject to change without notice.)

| Item No. | Part No. | Description | No. Req'd. | Item No. | Part No. | Description | No. Req'd. |
|----------|----------|------------------------------|------------|----------|----------|-------------------------|------------|
| 1 | 8155 | Mounting Frame | 1 | 18 | 920011-4 | Washer 1/2 Dia. SAE | 1 |
| 2 | 1982 | Spacer | 1 | 19 | 7451 | Pulley — Idler | 1 |
| 3 | 915113-6 | Nut 3/8-16 Nylok | 12 | 20 | 6719 | Pulley — Idler | 1 |
| 4 | 4795 | Cable | 1 | 21 | 8160 | Drive Belt | 1 |
| 5 | 8157 | Crank | 1 | 22 | 908036-4 | Bolt Hex 3/8-16 x 1 1/2 | 1 |
| 6 | 932016-4 | Cotter Pin 1/8 x 3/4 | 2 | 23 | 4776 | Rod and Spacer Mounting | 1 |
| 7 | 920011-4 | Washer 1/2 SAE | 3 | 24 | 6426 | Crank Support | 1 |
| 8 | 4569 | Handle — Rubber | 1 | 25 | 908032-4 | Bolt Hex 3/8-16 x 3/4 | 4 |
| 9 | 2354 | Spring | 1 | 26 | 7494 | Reinforcing Bar | 2 |
| 10 | 8730 | Tube and Bar | 1 | 27 | 5982 | Bushing — Nylon | 1 |
| 11 | 8727 | Lift Rod | 1 | 28 | 908035-4 | Bolt 3/8-16 x 1 1/4 | 4 |
| 12 | 933505-4 | Hairpin Cotter | 1 | 29 | 4774 | Shim L.H. | 1 |
| 13 | 8158 | Pulley — Drive Shaft | 1 | 30 | 908037-4 | Bolt Hex 3/8-16 x 1 3/4 | 1 |
| 14 | 909862-5 | Set Screw 3/8-18 x 3/8 Nylok | 2 | 31 | 7672 | Bracket — Belt Guard | 1 |
| 15 | 9595 | Idler Arm Ass'y | 1 | 32 | 7450 | Spacer | 1 |
| 16 | 6651 | Spring | 1 | 33 | 9696 | Shim R.H. (Cutout) | 1 |
| 17 | 933504-4 | Hairpin Cotter | 1 | | | | |