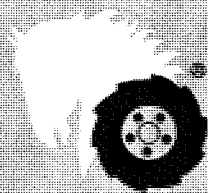


## PARTS LIST AND INSTRUCTIONS



*Wheel Horse*

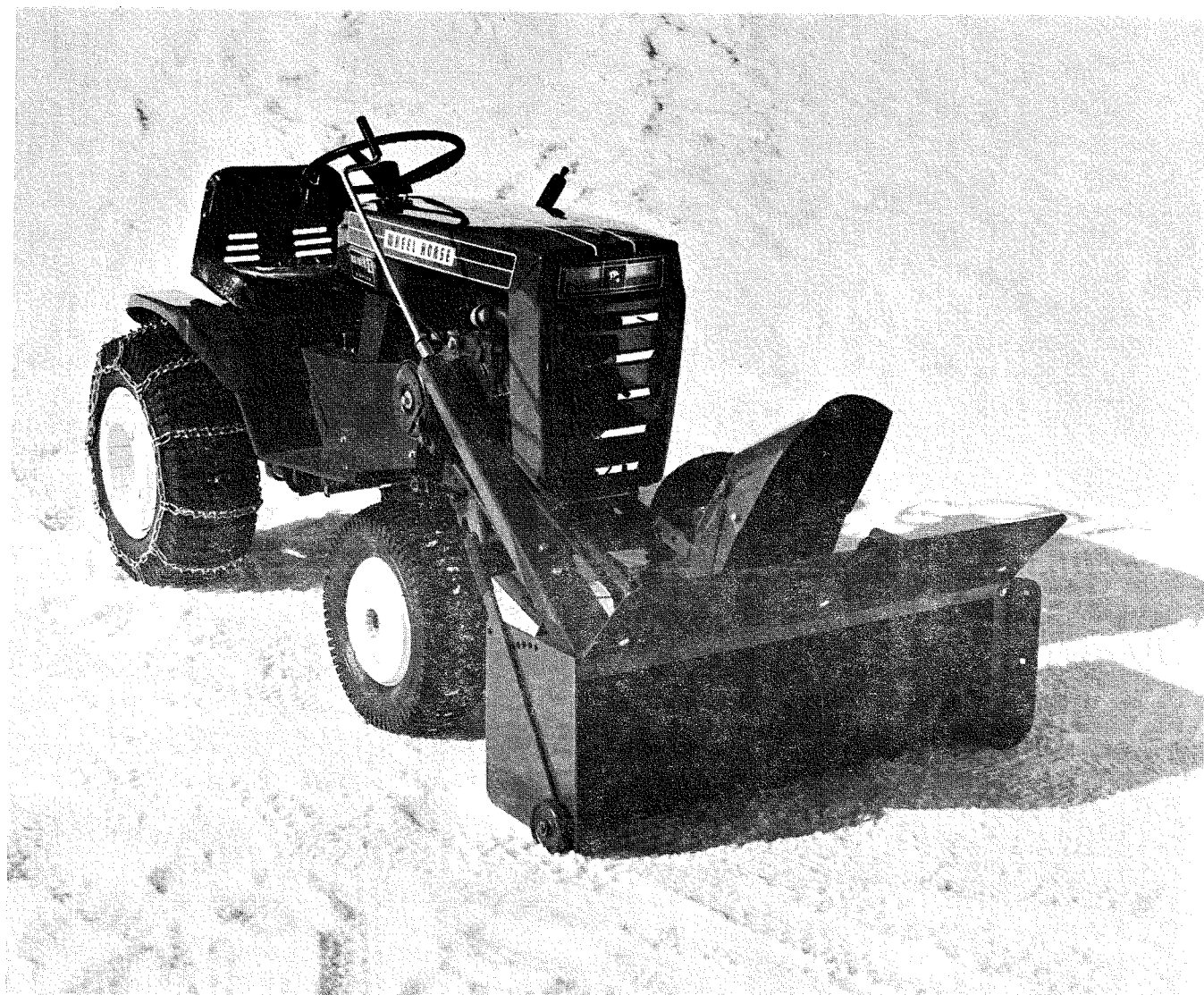
WHEEL-HORSE PRODUCTS, INC. • SOUTH BEND, IND.

# SNOW THROWER

**BASIC UNIT**

**MODEL**

**6-6212**

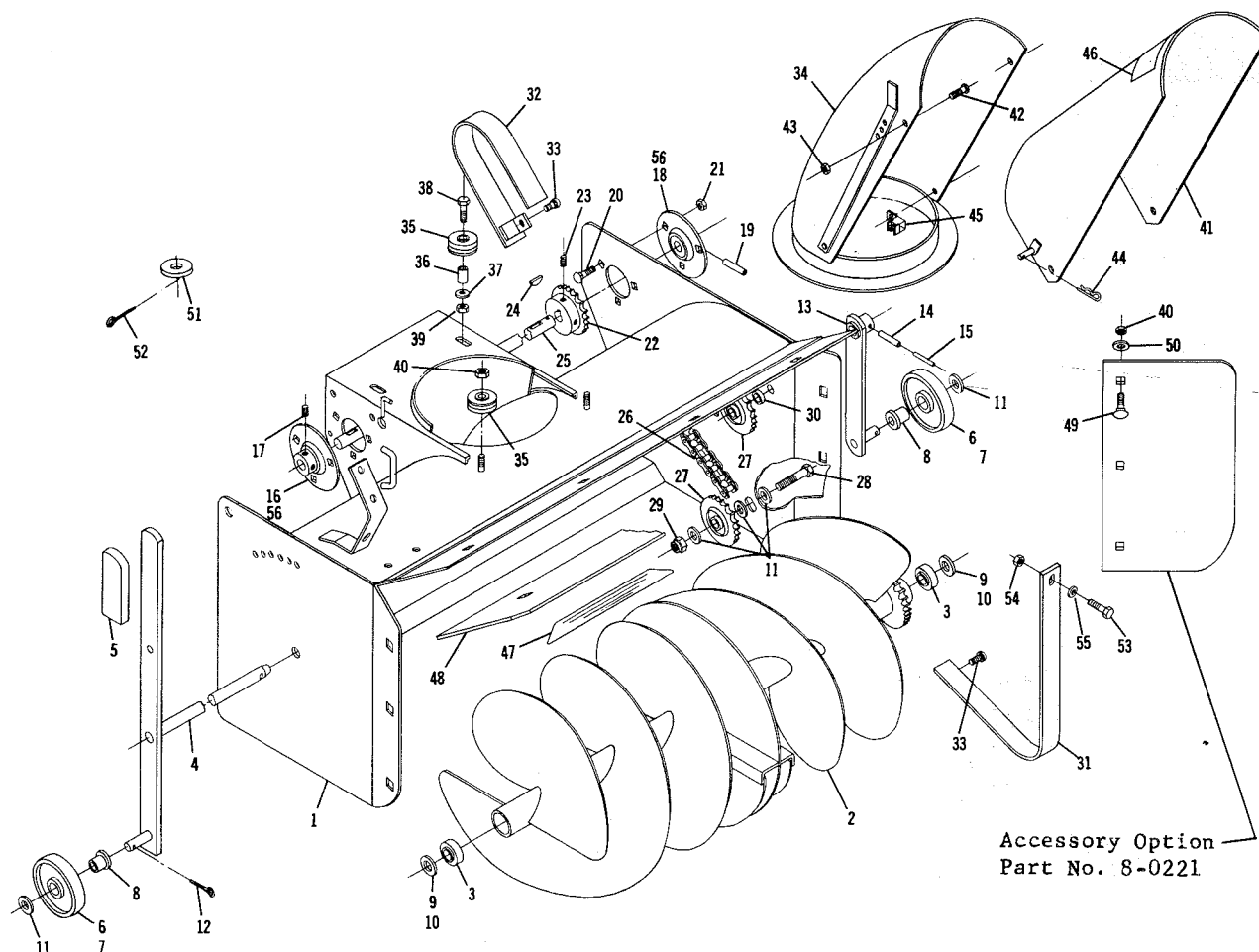


Snow throwers are shipped in two separate cartons, a basic unit, and a completing package. This carton contains the basic unit. Two completing packages are available Model 6-9112 and Model 6-9122.

The 6-9112 completing package will fit all 10, 12 and 14 h.p. long-frame (45½" wheel base) tractors. The 6-9122 completing package will fit the GT-14 tractors.

All tractors require a power take-off clutch, either mechanical or electrical type. Tractors prior to 1970 must use Model 8-3112, mechanical type, clutch. Model 8-3512, electrical type is standard on the 1971 line.

Complete assembly and mounting instructions of the basic unit is provided in the completing package.



## 6-6212 SNOW THROWER — BASIC UNIT

When ordering parts always list Part No. and name of Part.

Parts available only through Authorized Dealers.

(Specifications subject to change without notice.)

Item No.	Part No.	Description	No. Req'd.	Item No.	Part No.	Description	No. Req'd.
1	6429	Wrapper Ass'y	1	29	915115-6	Nut 1/2-13 Esllok	2
2	4467	Auger Ass'y	1	30	6417	Spacer	1
3	1515	Ball Bearing	2	31	6418	Guard — Inner	1
4	4477	Auger Shaft Ass'y	1	32	2162	Guard — Outer	1
5	5359	Grip	1	33	1391	Screw — Sems 1/4-20 x 3/8	3
6	2173	Wheel & Bushing Ass'y	2	34	5220	Shroud Ass'y	1
7	1987	Wheel	2	35	1973	Roller	4
8	1974	Bushing	2	36	2163	Spacer	2
9	920225-4	Washer .080 Thick	2	37	920007-4	Washer 1/4 SAE	2
10	1278	Washer .050 Thick	2	38	908006-4	Bolt Hex 1/2-20 x 1 1/4	2
11	920011-4	Washer 1/2 SAE	5	39	915111-6	Nut 1/4-20 Esllok	2
12	932016-4	Cotter Pin 1/8 x 3/4	2	40	915663-4	Nut 3/8-16 Elastic Stop	5
13	5157	Wheel Support Ass'y	1	41	2165	Deflector Ass'y	1
14	933215	Roll Pin 1/4 x 1 1/4	1	42	910836-4	Bolt Round Head 1/4-20 x 1/2	2
15	933267	Roll Pin 5/32 x 1 1/4	1	43	915661-4	Nut 1/4-20 Elastic Stop	2
16	101781	Ball Bearing — Self Aligning	1	44	933503-4	Hairpin Cotter	1
17	909862-5	Set Screw 5/16-18 x 5/16 Nylok	2	45	101447	Clamp — Cable — Chute	2
18	101782	Ball Bearing — Self Aligning	1	46	7637	Decal — Caution	1
19	933216	Roll Pin 1/4 x 1 3/8	1	47	5604	Decal — Attachment	1
20	900037-4	Bolt — Carriage 5/16-18 x 3/4	6	48	7495	Plate — Top Extension	1
21	915112-6	Nut — 5/16-18 Esllok	6	49	900063-4	Bolt Carriage 3/8-16 x 1	3
22	6415	Sprocket	1	50	920009-4	Washer 3/8 SAE	3
23	909848-5	Set Screw 1/4-20 x 1/4 Nylok	2	51	920013-4	Washer 5/8 SAE	1
24	937014	Key #9 Woodruff	2	52	932034-4	Cotter Pin 3/8 x 1	1
25	4757	Shaft — Drive	1	53	908002-4	Bolt Hex 1/4-20 x 5/8	1
26	6416	Chain	1	54	915968-4	Nut 1/4-20 Hex Keps	1
27	2174	Idler Sprocket	2	55	920037-4	Washer 1/4 U.S.	1
28	908060-4	Bolt Hex 1/2-13 x 1 3/4	2	56	100906	Flange — Ball	4

---

Wheel Horse Service Bulletins 1961 - 1990: **#114** Issued: November 1969  
**Snow Thrower Model 6-6212 - Installation on 1966-1969 Long Frame Tractors**

[Previous](#)   [Table of Contents](#)   [Next](#)

---

The parts list and instructions manual for Snow Thrower, Model 6-6212, states that installation on tractors prior to 1970 also requires the installation of Model 8-3112 P.T.O. (to accomodate the "B" section V-belt in the Model 6-9112 completing package).

Further tests have produced a satisfactory alternative which permits installation using the "A" section P.T.O. pulley with which most prior model tractors are equipped.

#### INSTALLATION INSTRUCTIONS

Follow procedure in parts list and instructions manual for Model 6-9112 completing package, but substitute V-belt, part no. 7358, for part no. 9750 V-belt provided in the package.

On tractors with electric P.T.O. clutches, reverse the order for installing the drive belt by installing it first in the outer groove of the P.T.O. pulley and then in the drive pulley groove before sliding the drive pulley on the snow thrower input shaft. This operation will be somewhat easier to do if the snow thrower is first raised to transport position.

NOTE: If the drive shaft key is partially exposed after the drive pulley is aligned with the idler and engine pulleys, the drive shaft, part no. 4757, should be replaced with the latest version which is 7/16" longer and has an overall length of 25 13/16".

Atwood S. Kidder

Customer Relations Manager

---

Wheel Horse Service Bulletins 1961 - 1990: **#356** Issued: September 1983  
**Self-Aligning Ball Bearing (P/N 107744) Installation - Snowthrowers**

[Previous](#)   [Table of Contents](#)   [Next](#)

---

ST-326, ST-375, ST-376, STR-324,

6-0200, 6-0201, 6-0202, 6-1211, 6-2211, 6-3211,

6-6211, 6-6212, 6-6213, 6-6214, 6-6215, 6-7212,

66-42ST01, 76-42ST01, 86-42ST01, 96-42ST01

To All Dealers:

# 1. Subject

1.1 The current production self-aligning ball bearing, P/N 107744, is used as a substitute for bearings 4571, 100907, 101782, originally used on the above model snowthrowers. Because of a slight difference in the location of the spirol pin hole, some dealers and consumers have experienced difficulty installing it.

# 2. Service Action

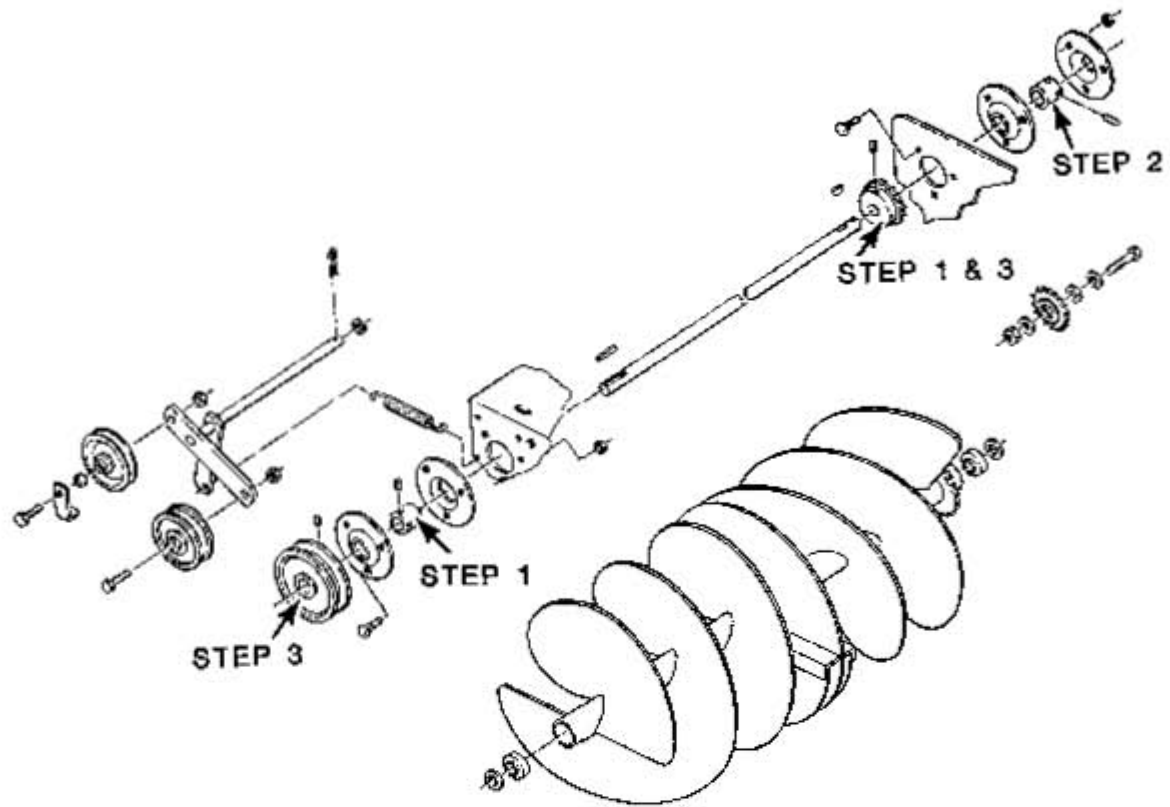
2.1 The procedure to use when replacing only this bearing follows. It is suggested that both drive shaft bearings be replaced at the same time, which eliminates the need to loosen parts simply for alignment purposes.

ROUTING	SERVICE MANAGER	SALES MANAGER	PARTS MANAGER	CHIEF MECHANIC	MECHANIC NO 1	MECHANIC NO 2	MECHANIC NO 3	MECHANIC NO 4	RETURN THIS TO
INITIAL HERE →									

## Installation of P/N 107744 Bearing in

### Place of Original Bearing 4571, 100907, 101782

1. Loosen Set Screws - Be sure drive shaft is free to slide inside bearing and sprocket.
2. Remove and Replace 107744 Bearing - Drive spirol pin part way in to locate drive shaft.
3. Align Drive Pulley and Sprocket as Required - Drive spirol pin completely in and tighten set screws.



---

Wheel Horse Service Bulletins 1961 - 1990: **#377** Issued: December 1984  
**Snowthrower Low Friction Discharge Chute Collar**

[Previous](#)   [Table of Contents](#)   [Next](#)

---

All 37" Snowthrowers, VIN'S ST-374, ST-375, ST-376, STR-376, 6-1211, 6-6211, 6-6212, 6-0201, 6-0202 and 6-37SX01.

**1980 and earlier 42" Snowthrowers, VIN'S 6-6213, 6-6214, 6-6215, 66-42ST01, 76-42ST01, 86-42ST01, 96-42ST01 and 06-42ST01**

## 1. Subject

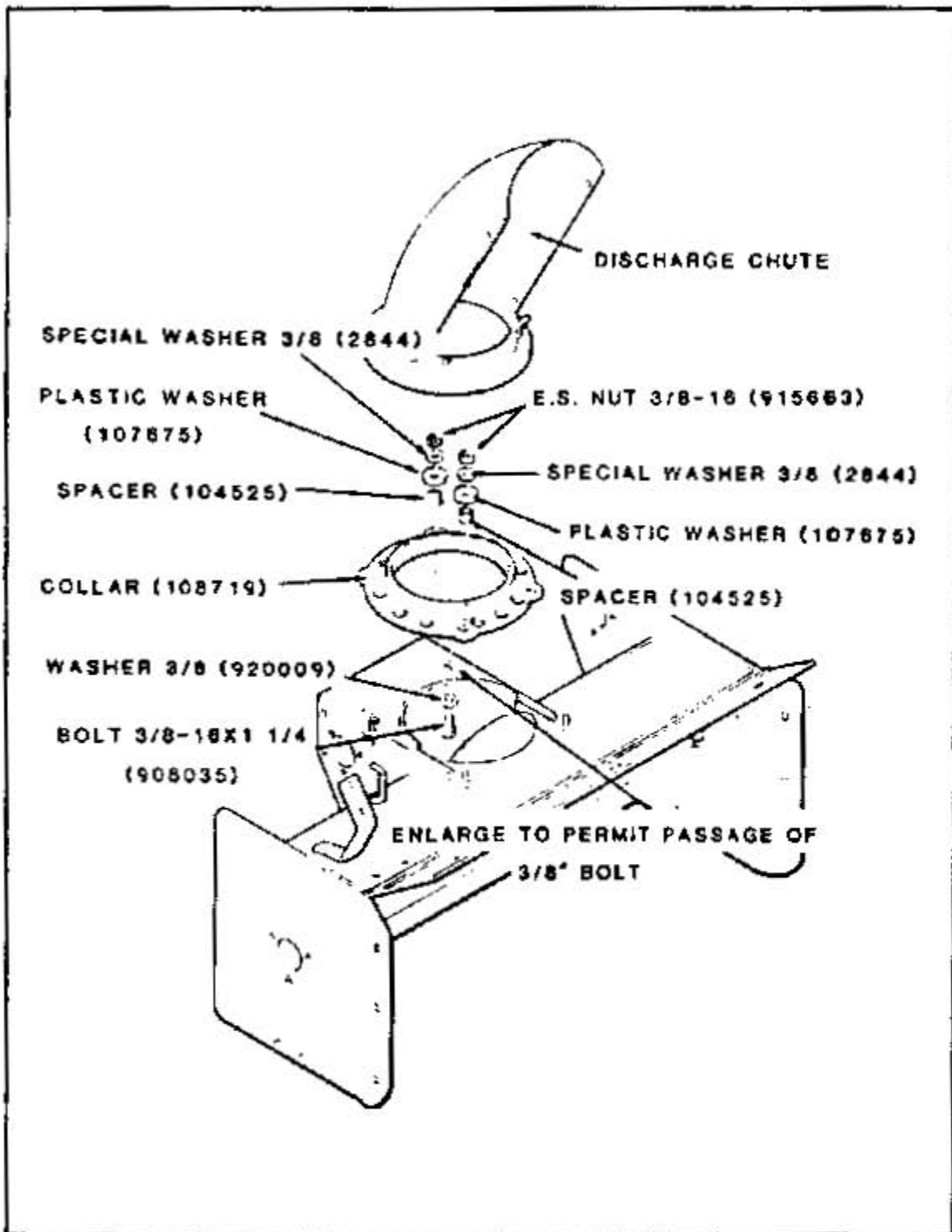
1.1 To convert older snowthrowers to the current production Low Friction Discharge Chute Collar, obtain and install parts as instructed below.

### 1.2 New parts necessary:

(1)	108719	Collar
(4)	2844	Special Washer 3/8
(2)	920009	Washer 3/8
(4)	107675	Plastic Washer
(4)	104525	Spacer
(2)	908035	Bolt 3/8-16 x 1-1/4
(2)	915663	E.S. Nut 3/8-16

## 2. Service Action

2.1 Disassemble and remove Discharge Chute, Rollers and hardware (Fig.1).



(Fig. 1)

2.2 Install new Collar, Discharge Chute and hardware as shown in Figure 1. Make sure that the Chute Flange is properly located between the Plastic Washer and the Collar. DO NOT OVER

TIGHTEN NUTS AND BOLTS. Also, check that the Directional Control Cable is properly returned to its correct position: refer to snowthrower owner's manual.

ROUTING	SERVICE MANAGER	SALES MANAGER	PARTS MANAGER	CHIEF MECHANIC	MECHANIC NO 1	MECHANIC NO 2	MECHANIC NO 3	MECHANIC NO 4	RETURN THIS TO
INITIAL HERE									

&gt;



---

Wheel Horse Service Bulletins 1961 - 1990: **#431** Issued: October 1988

## **Service Assembly 115660 - 42" Snowthrower Drive Shaft with Greasable Bearings**

[Previous](#)   [Table of Contents](#)   [Next](#)

---

VIN'S 6-6213; 6-6214; 6-6215; 66-42ST01; 76-42ST01; 86-42ST01;

96-42ST01; 06-42ST01, 02, 04; 06-42SY01,02

### 1. Subject

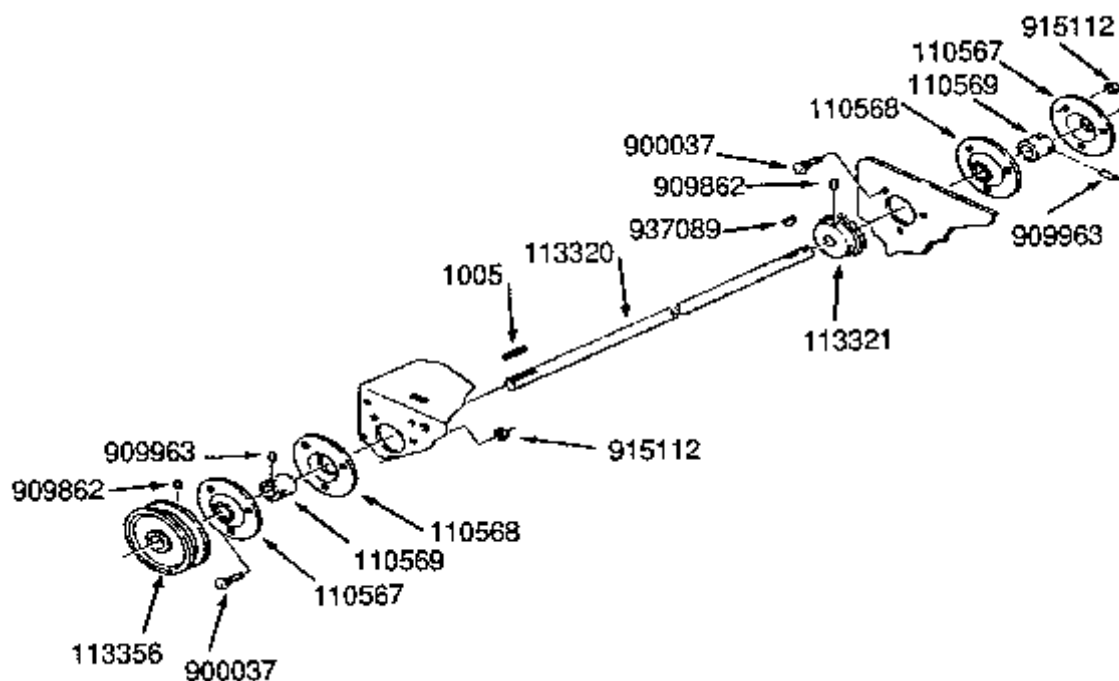
1.1 Optional Service Assembly Conversion Package is available to convert drive shaft non-greasable bearings to greasable bearings on VIN numbers listed above.

1.2 Optional Service Assembly can be ordered under Part Number 115660.

### 2. Service Action

2.1 Install optional Service Assembly as follows:

1. Remove original parts and install new parts as shown in Parts Illustration below. When installing set screws, apply supplied Loctite and tighten securely.



ROUTING	SERVICE MANAGER	SALES MANAGER	PARTS MANAGER	CHIEF MECHANIC	MECHANIC NO 1	MECHANIC NO 2	MECHANIC NO 3	MECHANIC NO 4	RETURN THIS TO
INITIAL HERE →									