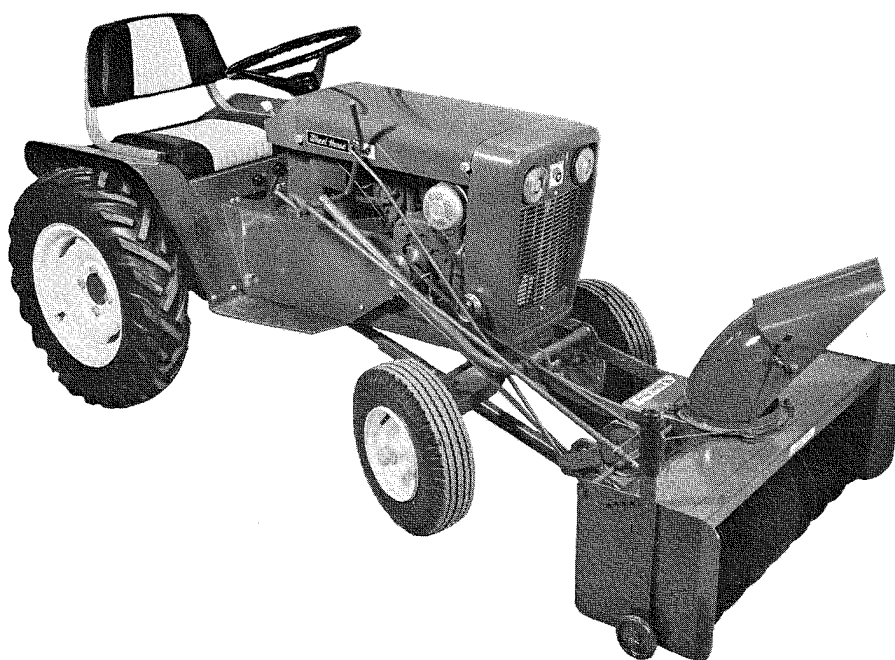


PARTS LIST AND INSTRUCTIONS



WHEELHORSE PRODUCTS, INC. • SOUTH BEND, IND.

SNOW THROWER ST-374



ASSEMBLY

Remove snow thrower from carton and fasten the mounting arms, part 4773 and shims, part 4774 to wrapper assembly, part 4461 with four $\frac{3}{8}$ -16 x 1 bolts, part 908034-4 and $\frac{3}{8}$ -16 Nylock nuts, part 915113-6.

Install control support, part, 4779 to mounting arms and secure with four $\frac{3}{8}$ -16 x 1 hex bolts, part 908035-4 and $\frac{3}{8}$ -16 nylock nuts, part 915113-6 (**NOTE:** Be sure the drive belt, part 1576 is on the inside of support toward the tractor). Slip clutch handle, part 4783 thru the hole in control support. Secure with two hair pin cotter, part S-52-4 in third and fourth holes from the end.

Install clutch rod, part 4758 thru clutch handle and secure with hair pin cotter, part S-52-3.

Install pivot end of clutch rod thru hole in idler bracket, part 4760 and secure with hair pin cotter, part S-52-3.

Install the shroud, part 5220 in the grooves of the front and rear rollers, part 1973. Adjust rear rollers by sliding forward. Be sure the rollers turn freely and the shroud turns freely, secure with two $\frac{1}{4}$ -20 x $1\frac{1}{4}$ hex bolts, part 908006-4 and two $\frac{1}{4}$ -20 nylock nuts, part 915111-6.

Install crank, part 4764 thru the hole in wrapper assembly, part 4461 and secure with cotter pin $\frac{1}{8}$ x 1, part 932017-4. Bend both ends around the crank.

Install bracket, part 4772 over crank then slide bracket over clutch handle and secure with two hair-pin cotter, part S-52-4.

Slide tube and bar ass'y., part 4787 over pin on snow thrower wear plate and secure with $\frac{5}{8}$ " flat washer, part 920013-4 and cotter pin, part 932034-4. Insert lift rod, ass'y. part 4790 in end of assembly tube and bar.

Move wheel adjustment lever all the way forward so wheels are down. Roll the unit to the tractor and secure with mounting spacer, part 1982 and rod and spacer, part 4776. Secure with $\frac{3}{8}$ -16 nylock nut, part 915113-6.

Install square key, $\frac{1}{4}$ x $\frac{1}{4}$ x $1\frac{1}{2}$ part 1349 in the engine shaft and slide pulley, part 4786 on engine shaft. Secure with two set screws, part 909852-4.

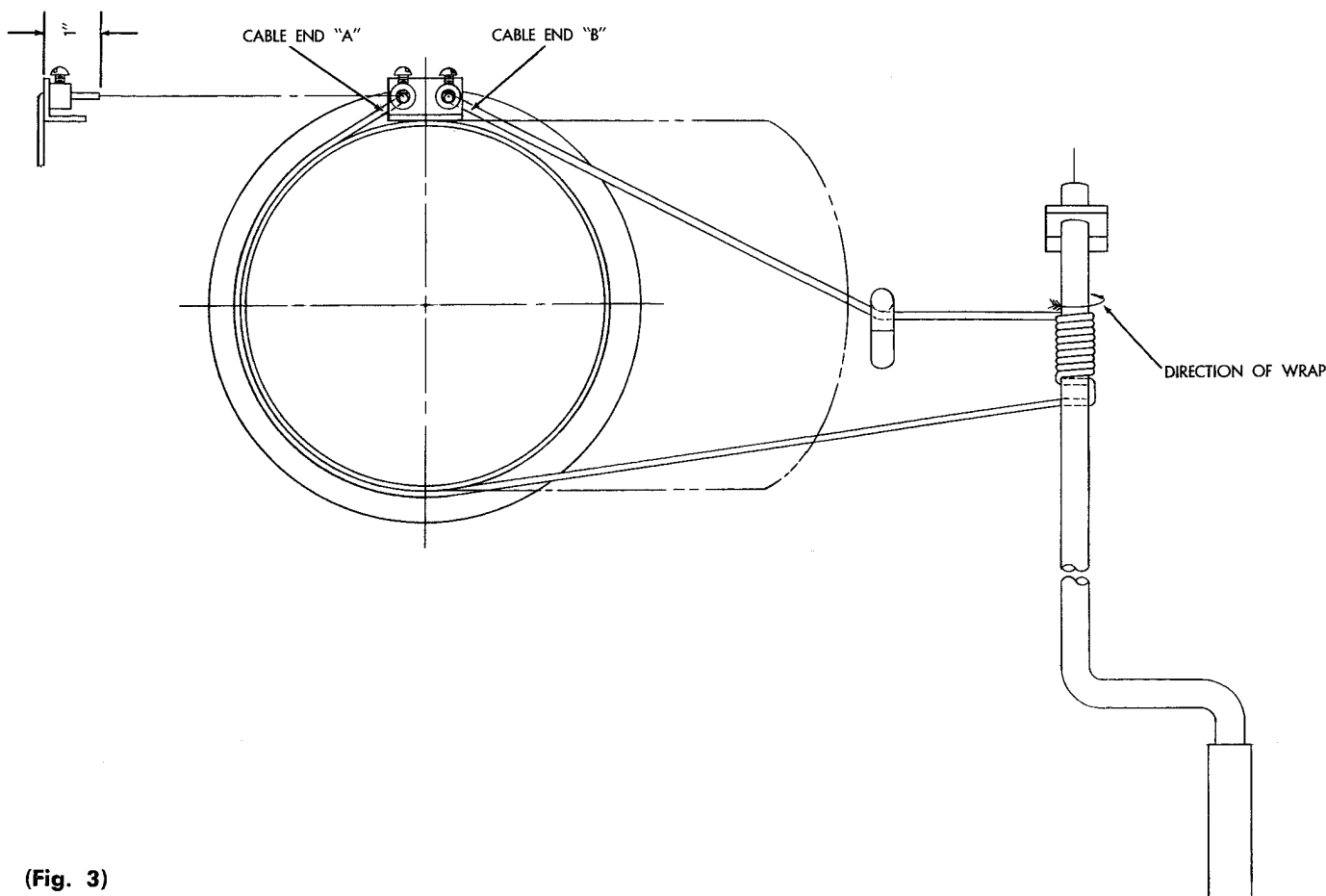
NOTE: Be sure the belt, part 1576 has been installed in line with the pulley.

Install upper idler pulley, part 4794 with spacer part 4763 between pulley and grille to the grille housing of the tractor and secure with $\frac{3}{8}$ rod, use $\frac{3}{8}$ S.A.E. washer part 920010-4 under each nut part 5286 and $\frac{3}{8}$ -14 nylock nut, part 915114-6 on each end.

Install lift rod assembly, part 4790 to the end of the tractor lift cylinder (clevis, see Fig. 2) and secure with pin, part 932999-4 and hairpin cotter, part S-52-5.

Install belt stop, part 4769 to engine mounting face and secure with $\frac{3}{8}$ -14 x 3 bolt, part 908053-4. Adjust so that it holds the belt when the attachment clutch rod is declutched.

NOTE: Belt stop should not touch the belt when running in raised or lowered position.



(Fig. 3)

CABLE WRAPPING

1. Face shroud, part 5220 to the right.
2. Thread cable, part 4795 end "A" up thru hole in collar on the shroud about 1" and secure with screw, part 908980-4.
3. Pull cable around the shroud and thread end of cable "B" thru the top hole in crank, part 4764 and back thru the bottom hole of crank. Wrap

- 8 complete turns down in direction shown, see Fig. 3, finish last turn on bottom of crank. Pull cable end "B" behind the hook on the wrapper assembly and thread up thru the second hole in shroud and secure with screw, part 908980-4.
4. Face shroud forward and grip cable end "A" with pliers, loosen screw, pull cable tight and secure with screw.

OPERATION

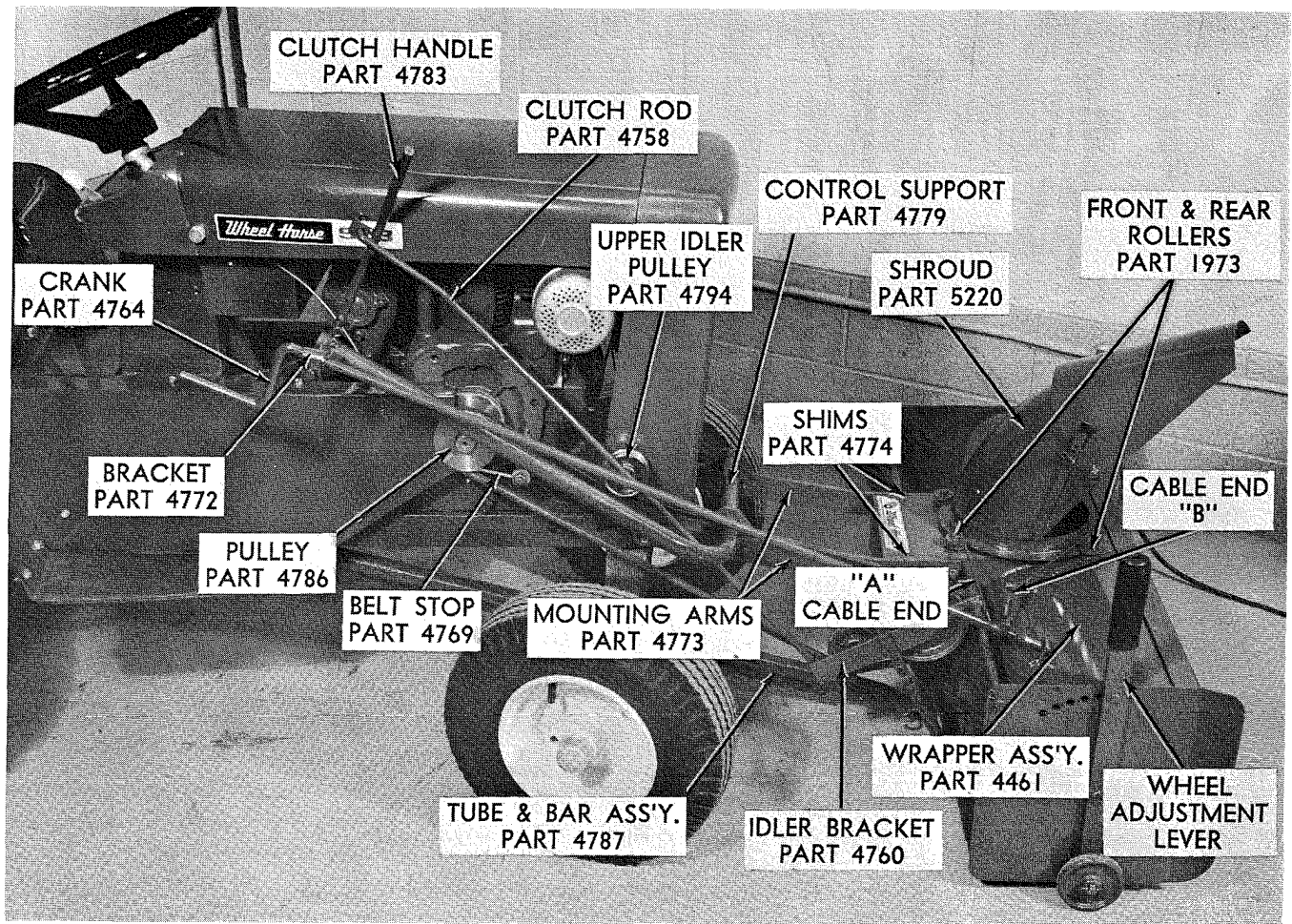
The adjustable shroud allows the operator to control the direction the snow may be thrown by turning the convenient pivot crank. The upper part of the snow shroud is adjustable to deflect the snow in an upward or downward direction depending upon conditions. There are wheels on each side for raising or lowering to prevent the Snow Thrower from catching on uneven surfaces. Under some conditions it will be necessary to coat the auger, shroud and the inside with paraffin or wax to prevent snow and ice from sticking. Best results are obtained with slow forward movement of the tractor and high auger speed, therefore under normal conditions the tractor should be operated in first gear with full throttle.

CAUTION — Engage clutch gently, do not snap into engagement. Be especially careful after the blower has set out doors after use. The auger could be frozen to the deck. Always shut off the engine before making any adjustment or lubrication.

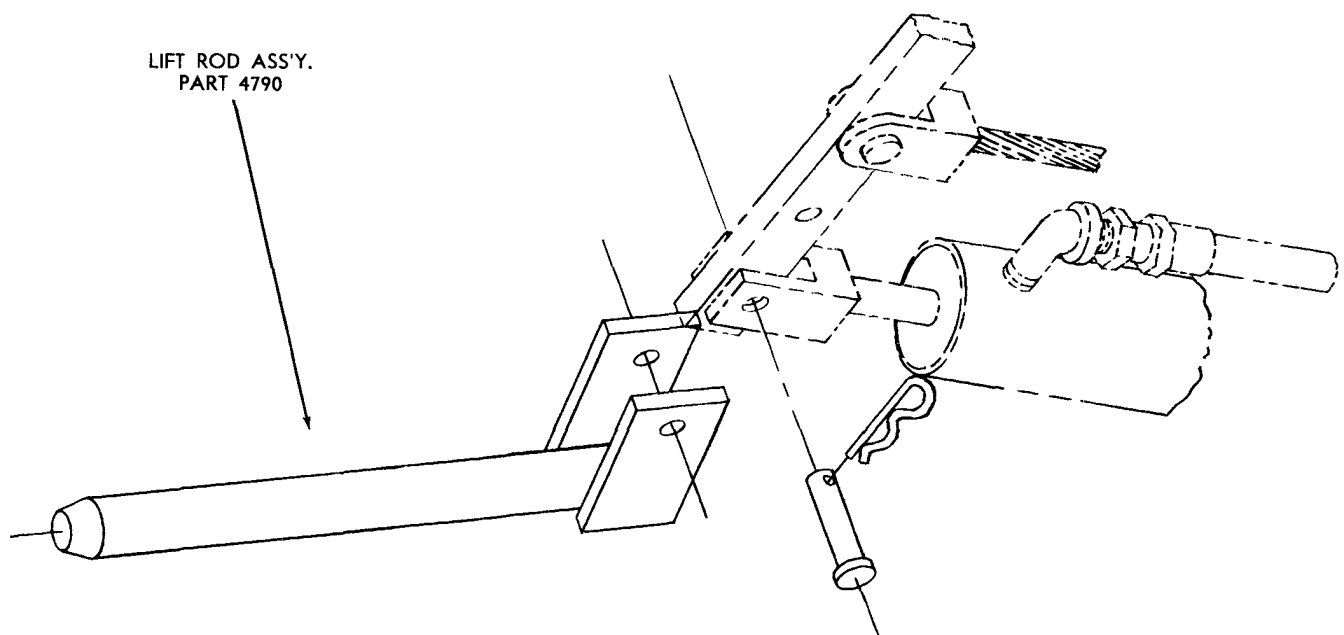
After the first hour of use recheck all bolts, nuts, and set screws — tighten securely. Check chains and belt alignment. Keep children and pets away while operating, there may be rocks or metal in the snow which could be thrown forward or out the chute. Never permit anyone to stand in front of blower when engine is running.

LUBRICATION

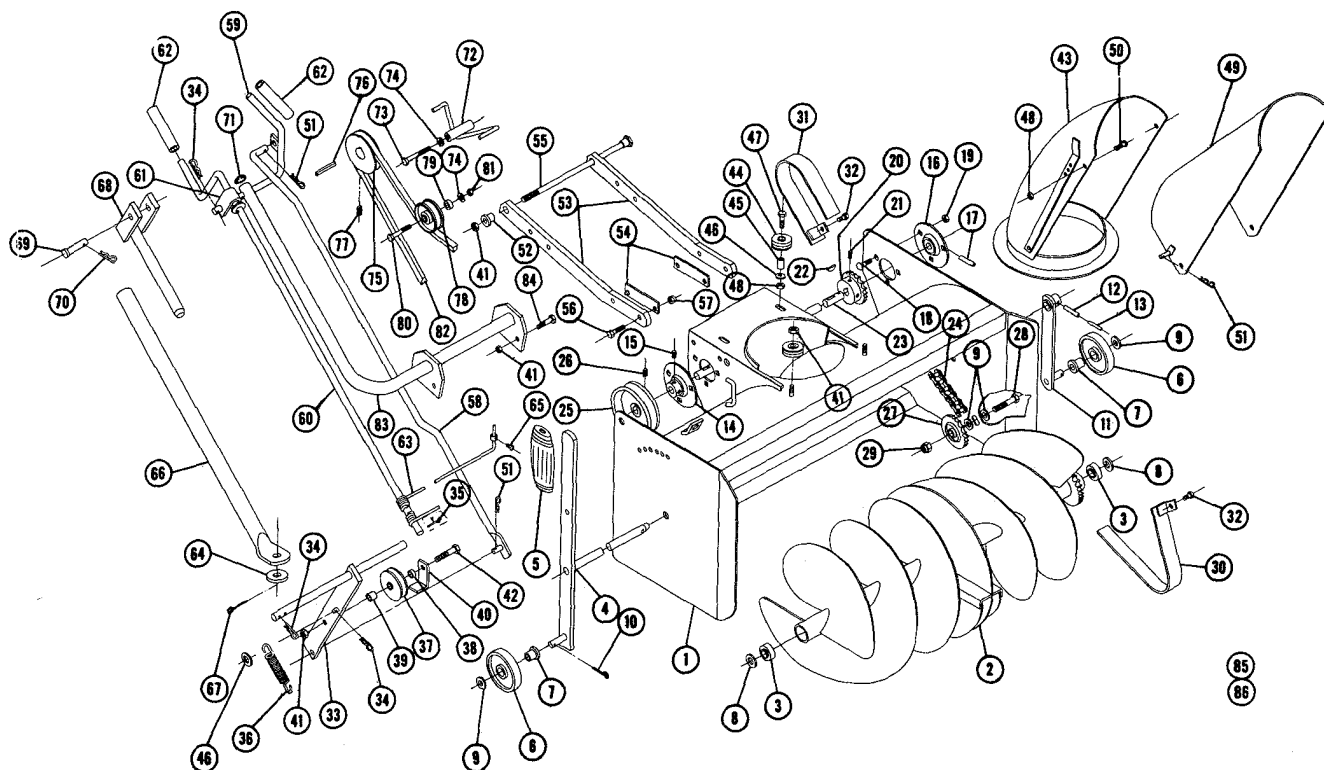
The drive chain should be oiled with a light grade of machine oil. All other bearings and movable parts should be oiled frequently. In storing the Snow Thrower, it is advisable to coat the auger with a heavy machine oil to prevent rust.



(Fig. 1)



(Fig. 2)



PARTS LIST

When ordering parts always list Part No. and name of part.

Ref No.	Part No.	Description	No. Req'd	Ref No.	Part No.	Description	No. Req'd
1	4461	Ass'y. Wrapper	1	44	1973	Roller	4
2	4467	Ass'y. Auger	1	45	2163	Spacer	2
3	1515	Bearing — Ball	2	46	920007-4	Washer $\frac{1}{4}$ SAE	3
4	4477	Ass'y. Auger Shaft	1	47	908006-4	Bolt — Hex $\frac{1}{4}$ -20 x $1\frac{1}{4}$	2
5	1000	Grip	1	48	915111-6	Nut — Nylock $\frac{1}{4}$ -20	4
6	1987	Wheel	2	49	2165	Ass'y. Deflector	1
7	1974	Bushing — Nylon	2	50	909052-4	Bolt — Rd. Hd. $\frac{1}{4}$ -20 x $\frac{1}{2}$	2
8	2090	Washer — Auger	2	51	S-52-3	Hairpin .058 x $1\frac{1}{8}$	3
9	920011-4	Washer — $\frac{1}{2}$ SAE	4	52	1982	Spacer	1
10	932016-4	Cotter Pin $\frac{1}{8}$ x $\frac{3}{4}$	2	53	4773	Arm — Mounting	2
11	5157	Ass'y. Wheel Support	1	54	4774	Shim	2
12	933215	Roll Pin $\frac{1}{4}$ x $1\frac{1}{4}$	1	55	4776	Ass'y. Rod & Spacer	1
13	933173	Roll Pin $\frac{1}{32}$ x $1\frac{1}{4}$	1	56	908034-4	Bolt — Hex $\frac{3}{8}$ -16 x 1	4
14	5269	Bearing — Flanged Ball	1	57	915113-6	Nut $\frac{3}{8}$ -16 Nylock	4
15	909849-6	Set Screw $\frac{1}{4}$ -20 x $\frac{5}{16}$ Nylock	2	58	4758	Ass'y. Clutch Rod	1
16	4571	Bearing — Flanged Ball	1	59	4783	Ass'y. Handle — Clutch	1
17	933216	Roll Pin $\frac{1}{4}$ x $1\frac{3}{8}$	1	60	4764	Crank	1
18	900037-4	Bolt — Carriage $\frac{3}{16}$ -18 x $\frac{3}{4}$	6	61	4772	Bracket	1
19	915112-6	Nut — Nylock $\frac{3}{16}$ -18	6	62	4569	Tube (Rubber)	2
20	2176	Sprocket	1	63	4795	Cable	1
21	909848-6	Set Screw $\frac{1}{4}$ -20 Hex — Soc. Nylock	2	64	920013-4	Washer $\frac{5}{8}$ SAE	1
22	937014	Key #9 Woodruff	2	65	908980-4	Screw — Rd. Hd. Mach. #6-32 x $\frac{1}{4}$	2
23	4757	Shaft — Drive	1	66	4787	Ass'y. Tube & Bar	1
24	2175	Chain	1	67	932034-4	Cotter Pin $\frac{3}{16}$ x 1	1
25	4793	Pulley — Drive Shaft 5" O.D.	1	68	4790	Ass'y. Lift Rod	1
26	909862-6	Set Screw $\frac{5}{16}$ -18 x $\frac{5}{16}$ Nylock	2	69	932999-4	Pin	1
27	2174	Sprocket — Idler	1	70	S-52-5	Hairpin Cotter .091 x $1\frac{1}{8}$	1
28	908060-4	Bolt — $\frac{1}{2}$ -13- $1\frac{3}{4}$	1	71	935105-1	Plug — Button	1
29	915607-4	Nut — Type TU $\frac{1}{2}$ -13 Elastic Stop	1	72	4769	Ass'y. Belt Stop	1
30	2089	Ass'y. Guard — Inner	1	73	908053-4	Bolt — Hex $\frac{1}{16}$ -14 x 3	1
31	2162	Ass'y. Guard — Outer	1	74	920010-4	Washer $\frac{1}{16}$ SAE	3
32	1391	Screw — Sems $\frac{1}{4}$ -20 x $\frac{3}{8}$	4	75	4786	Pulley — Engine	1
33	4760	Ass'y. Idler Bracket	1	76	1349	Key $\frac{1}{4}$ x $\frac{1}{4}$ x $1\frac{1}{2}$	1
34	S-52-4	Hairpin .072 x $1\frac{1}{16}$	8	77	909852-4	Set Screw $\frac{1}{4}$ -20 x $\frac{1}{2}$	2
35	932017-4	Cotter Pin $\frac{1}{8}$ x 1	1	78	4794	Pulley — Upper Idler	1
36	5185	Spring	1	79	4763	Spacer	1
37	1623	Pulley — Idler	1	80	5286	Rod	1
38	1536	Spacer $\frac{3}{16}$ Long	1	81	915114-6	Nut — Nylock $\frac{1}{16}$ -14	2
39	2233	Spacer $\frac{1}{2}$ Long	1	82	1576	Belt — Drive 70"	1
40	3760	Bracket — Belt Guide	1	83	4779	Ass'y. Control Support	1
41	915113-6	Nut Nylock $\frac{3}{8}$ -16	8	84	908034-4	Bolt Hex $\frac{3}{8}$ -16 x 1	4
42	908038-4	Bolt — $\frac{3}{8}$ -16 x 2 Hex	1	85	4498	Decal — Gen. Caution	1
43	5220	Ass'y. Shroud	1	86	4411	Decal — Attachment	1

Wheel Horse Service Bulletins 1961 - 1990: **#377** Issued: December 1984
Snowthrower Low Friction Discharge Chute Collar

[Previous](#) [Table of Contents](#) [Next](#)

All 37" Snowthrowers, VIN'S ST-374, ST-375, ST-376, STR-376, 6-1211, 6-6211, 6-6212, 6-0201, 6-0202 and 6-37SX01.

1980 and earlier 42" Snowthrowers, VIN'S 6-6213, 6-6214, 6-6215, 66-42ST01, 76-42ST01, 86-42ST01, 96-42ST01 and 06-42ST01

1. Subject

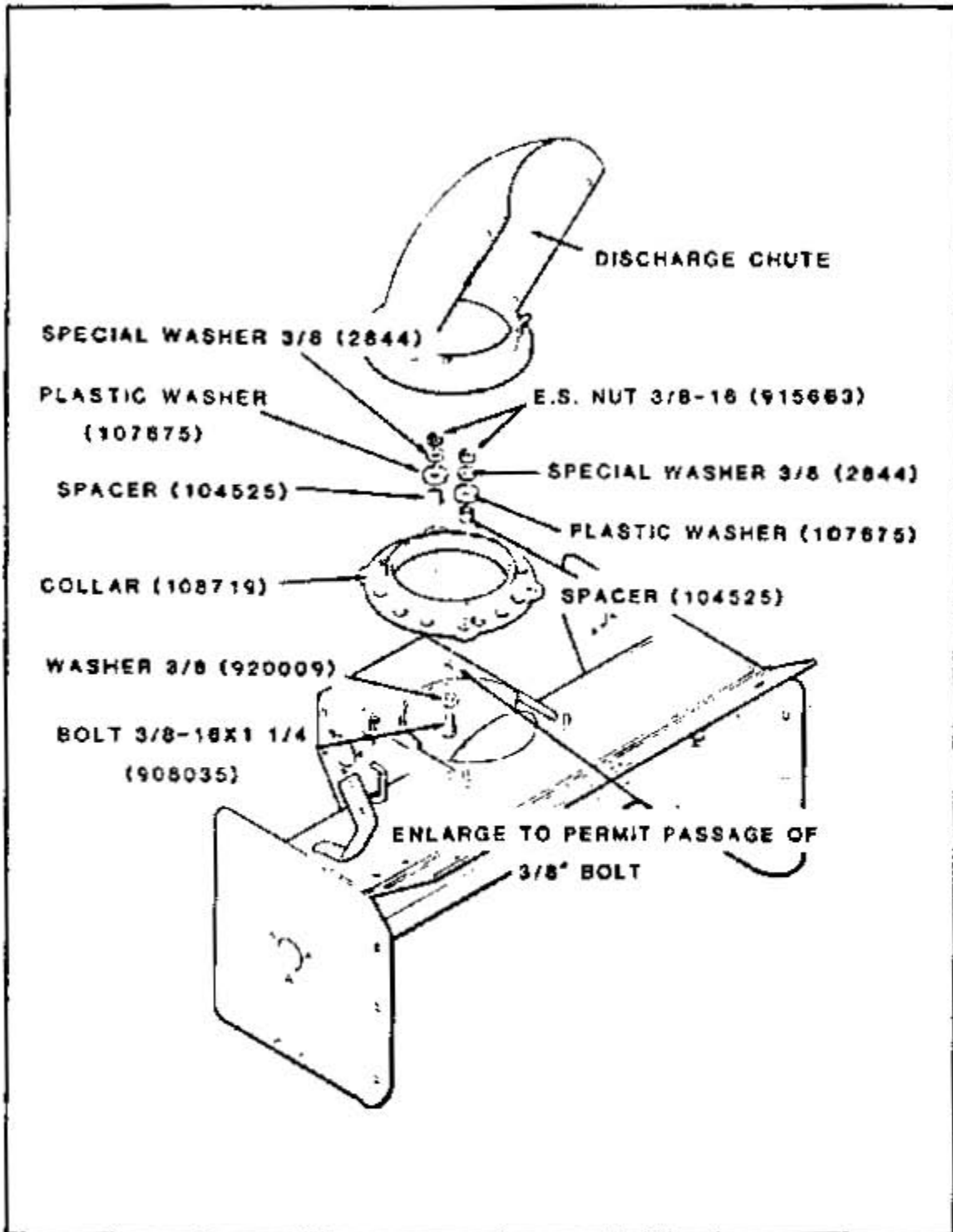
1.1 To convert older snowthrowers to the current production Low Friction Discharge Chute Collar, obtain and install parts as instructed below.

1.2 New parts necessary:

(1)	108719	Collar
(4)	2844	Special Washer 3/8
(2)	920009	Washer 3/8
(4)	107675	Plastic Washer
(4)	104525	Spacer
(2)	908035	Bolt 3/8-16 x 1-1/4
(2)	915663	E.S. Nut 3/8-16

2. Service Action

2.1 Disassemble and remove Discharge Chute, Rollers and hardware (Fig.1).



(Fig. 1)

2.2 Install new Collar, Discharge Chute and hardware as shown in Figure 1. Make sure that the Chute Flange is properly located between the Plastic Washer and the Collar. DO NOT OVER

TIGHTEN NUTS AND BOLTS. Also, check that the Directional Control Cable is properly returned to its correct position: refer to snowthrower owner's manual.

ROUTING	SERVICE MANAGER	SALES MANAGER	PARTS MANAGER	CHIEF MECHANIC	MECHANIC NO 1	MECHANIC NO 2	MECHANIC NO 3	MECHANIC NO 4	RETURN THIS TO
INITIAL HERE									

>