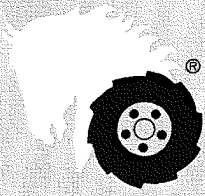


# PARTS LIST AND INSTRUCTIONS



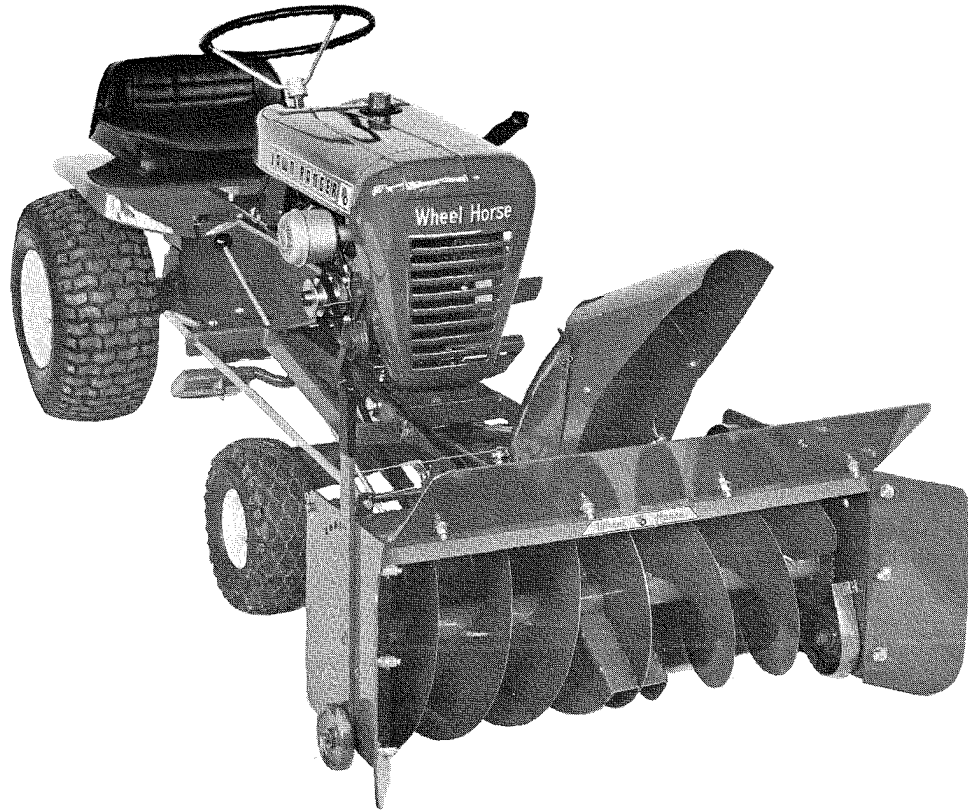
*Wheel Horse*

WHEELHORSE PRODUCTS, INC. • SOUTH BEND, IND.

# SNOW THROWER

## MODEL 6-3211

(Formerly STR-324)



### ASSEMBLY

To identify the parts mentioned in the assembly instructions refer to Fig. I and Fig. II.

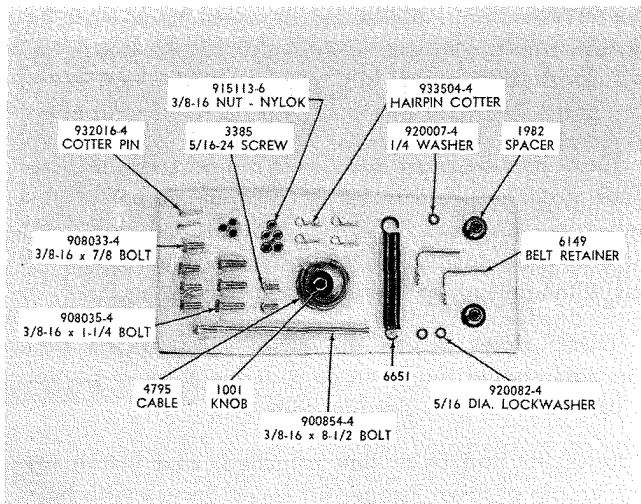


FIG. I

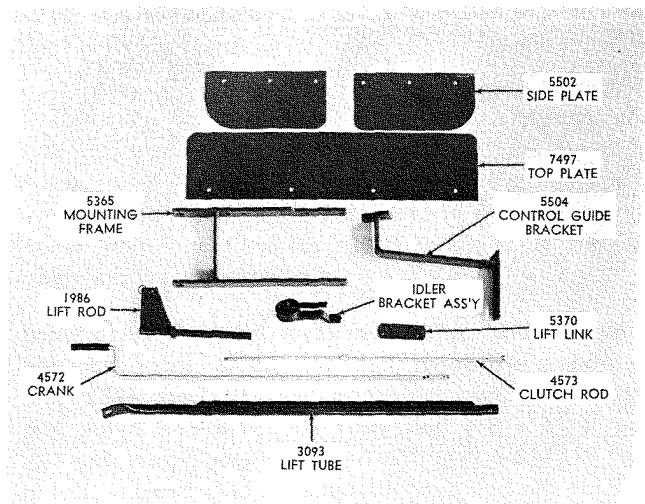


FIG. II

Install mounting frame to the main assembly and secure with four  $\frac{3}{8}$ -16 x  $\frac{7}{8}$  bolts, part 908033-4 and nylok nuts, part 915113-6. Fasten control guide bracket part 5504 to mounting frame. Secure with two  $\frac{3}{8}$ -16 x  $1\frac{1}{4}$  bolts, part 908035-4 and  $\frac{3}{8}$ -16 nylok nuts, part 915113-6. See Fig. III.

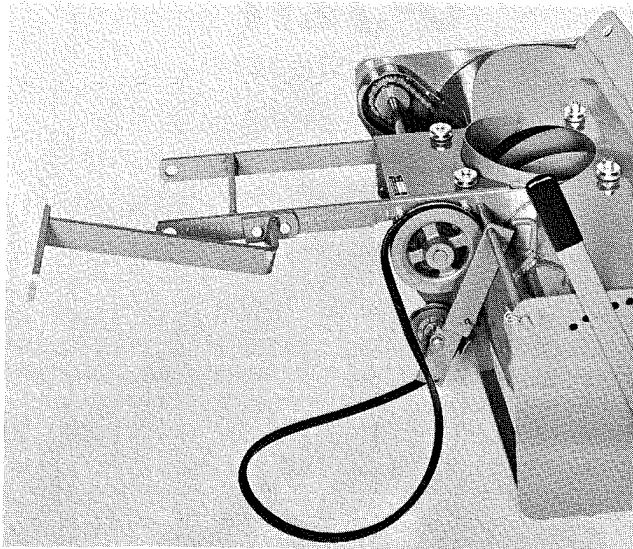


FIG. III

Install the shroud assembly in the grooves of the front and rear rollers. Adjust rear rollers by sliding forward. Be sure rollers turn freely and shroud turns freely. See Fig. IV.

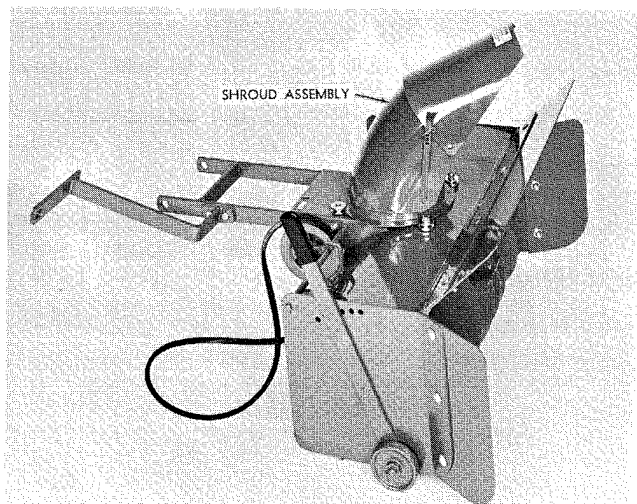


FIG. IV

Move wheel adjustment lever all the way forward so wheels are down. Roll the unit to the tractor and secure with two mounting spacers, part 1982 and one  $\frac{3}{8}$ -16 x  $8\frac{1}{2}$  bolt, part 900854-4 and nylok nut, part 915113-6 thru first hole in tractor frame. See Fig. V. Slide the belt over the control guide bracket and in the pulley groove nearest the tractor.

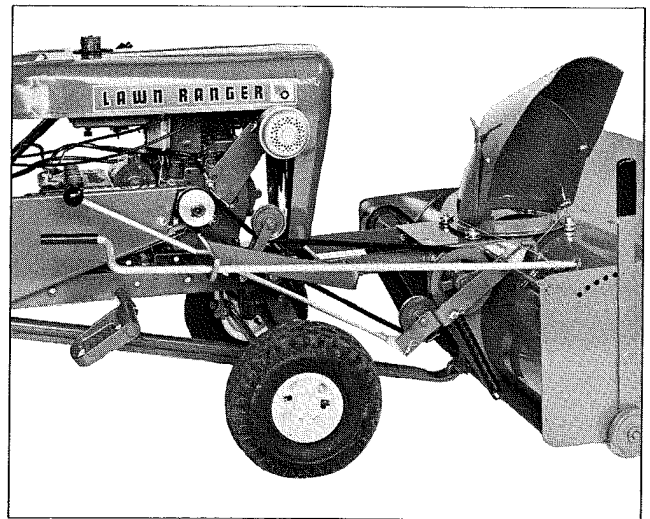


FIG. V

Install crank, part 4572 thru the hole in the control guide, and thru the hole in the bracket on the wrapper assembly, and secure with cotter pins,  $\frac{1}{8}$  x  $\frac{3}{4}$ , part 932016-4. Bend both ends around the crank.

Bolt the idler bracket assembly to the R.H. frame rail with  $\frac{3}{8}$ -16 x  $1\frac{1}{4}$  bolt, part 908035-4 through second hole from the end of the frame. Secure with  $\frac{3}{8}$ -16 nylok nut, part 915113-6.

The idler rides on top of upper V belt and the belt guide extends down along side both strands of belt. See Fig. V.

Install clutch rod, part 4573 thru slot in control guide and secure to idler bracket, with hairpin cotter, 933504-4, as shown. Install the knob, part 1001. Hook the spring to the main assembly and the idler arm, it is held in place with a  $\frac{1}{4}$  dia. washer, 920007-4 and hairpin cotter 933504-4. See Fig. V.

Fasten the two belt retainers to the engine with the  $\frac{5}{16}$ -24 screws, part 3385 and  $\frac{5}{16}$  lockwasher, part 920082-4.

Adjust belt retainers so that it holds the belt when the attachment clutch rod is declutched. (NOTE: Belt stop bracket should not touch the belt when running.)

Place lift tube, part 3093 over pin on snow thrower wear plate. Secure with  $\frac{1}{2}$ " flat washer, part 920011-4 and cotter pin, part 932034-4. Slide lift rod, part 1986 into lift tube. Install lift-link, part 5370 on pin of lift rod with the link extended forward.

(NOTE: Holes in link are offset towards one side. This side should be down so that the thickest portion is up.) Secure with hairpin cotter.

Raise lift Rod (with link attached) and install lift-link on pin of lawn Ranger lift lever. Secure with hairpin cotter, part 933504-4.

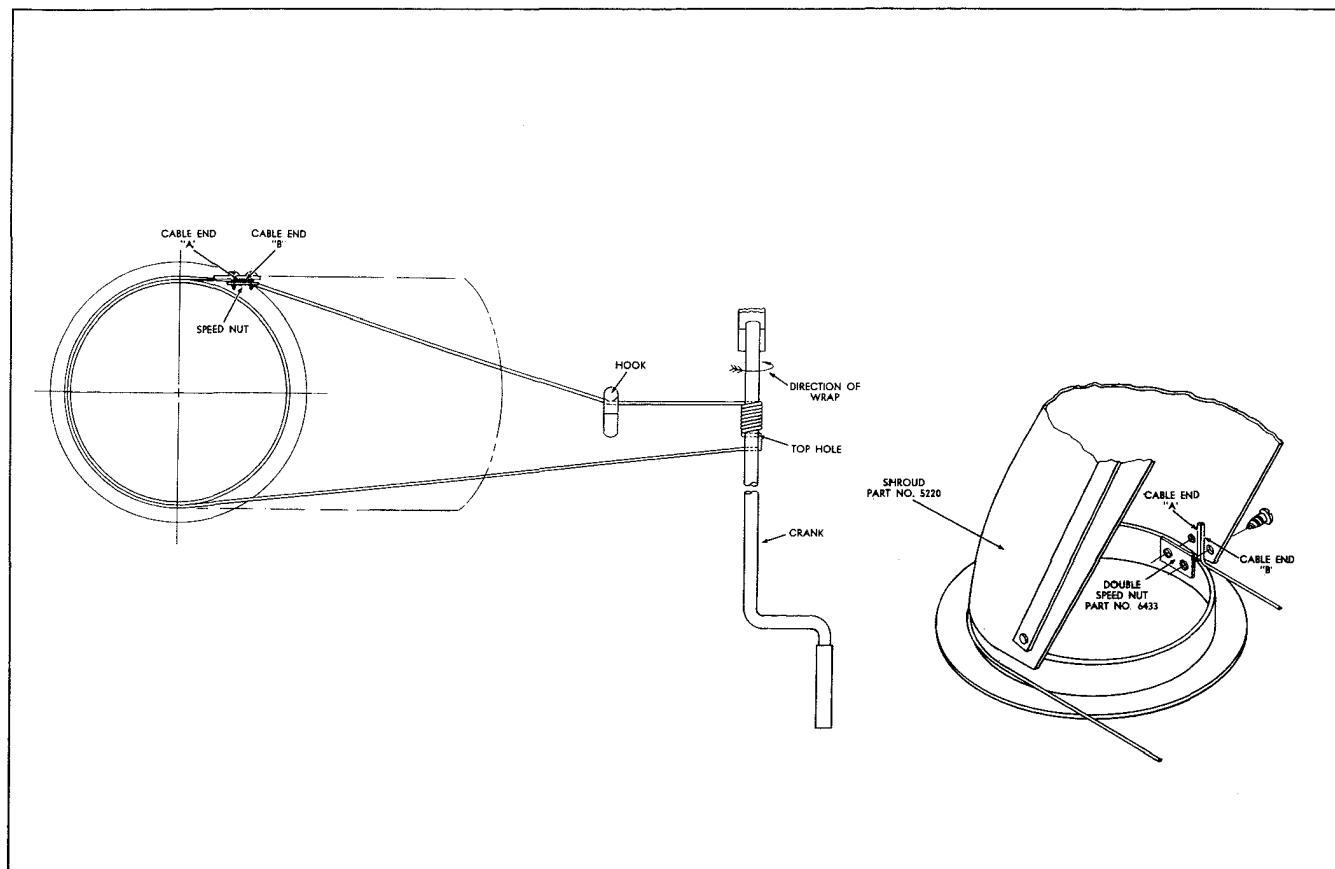


FIG. VI

## CABLE WRAPPING INSTRUCTIONS:

1. Face Shroud assembly to the right. (See Fig. VI.)
2. Thread Cable, Part No. 4795, end "A" up under the Double Speed Nut, Part No. 6433, and tighten screws just enough to retain cable.
3. Pull cable around the shroud and thread end "B" of cable through top hole in Crank, and then wrap eight (8) complete turns in direction shown in Fig. VI. Finish last turn on bottom of crank. Pull cable end "B" behind the hook on the wrapper assembly and thread up under the double speed nut. Retighten screws just enough to retain cable.
4. Face shroud forward and grip both ends of cable with pliers and pull until cable is tight. Tighten screws in speed nut securely.

## OPERATION

The adjustable shroud allows the operator to control the direction the snow may be thrown by turning the convenient pivot crank. The upper part of the snow shroud is adjustable to deflect the snow in an

upward or downward direction depending upon conditions. There are wheels on each side for raising or lowering to prevent the Snow Thrower from catching on uneven surfaces. Under some conditions it will be necessary to coat the auger, shroud and the inside with paraffin or wax to prevent snow and ice from sticking. Best results are obtained with slow forward movement of the tractor and high auger speed.

**CAUTION** — Engage clutch gently, do not snap into engagement. Be especially careful after the blower has set out doors after use. The auger could be frozen to the deck. Always shut off the engine before making any adjustment or lubrication.

After the first hour of use recheck all bolts, nuts, and set screws — tighten securely. Check chains and belt alignment. Keep children and pets away while operating, there may be rocks or metal in the snow which could be thrown forward or out the chute. Never permit anyone to stand in front of blower when engine is running.

## LUBRICATION

The drive chain should be oiled with a light grade of machine oil. All other bearings and movable parts should be oiled frequently. In storing the Snow Thrower, it is advisable to coat the auger with a heavy machine oil to prevent rust.

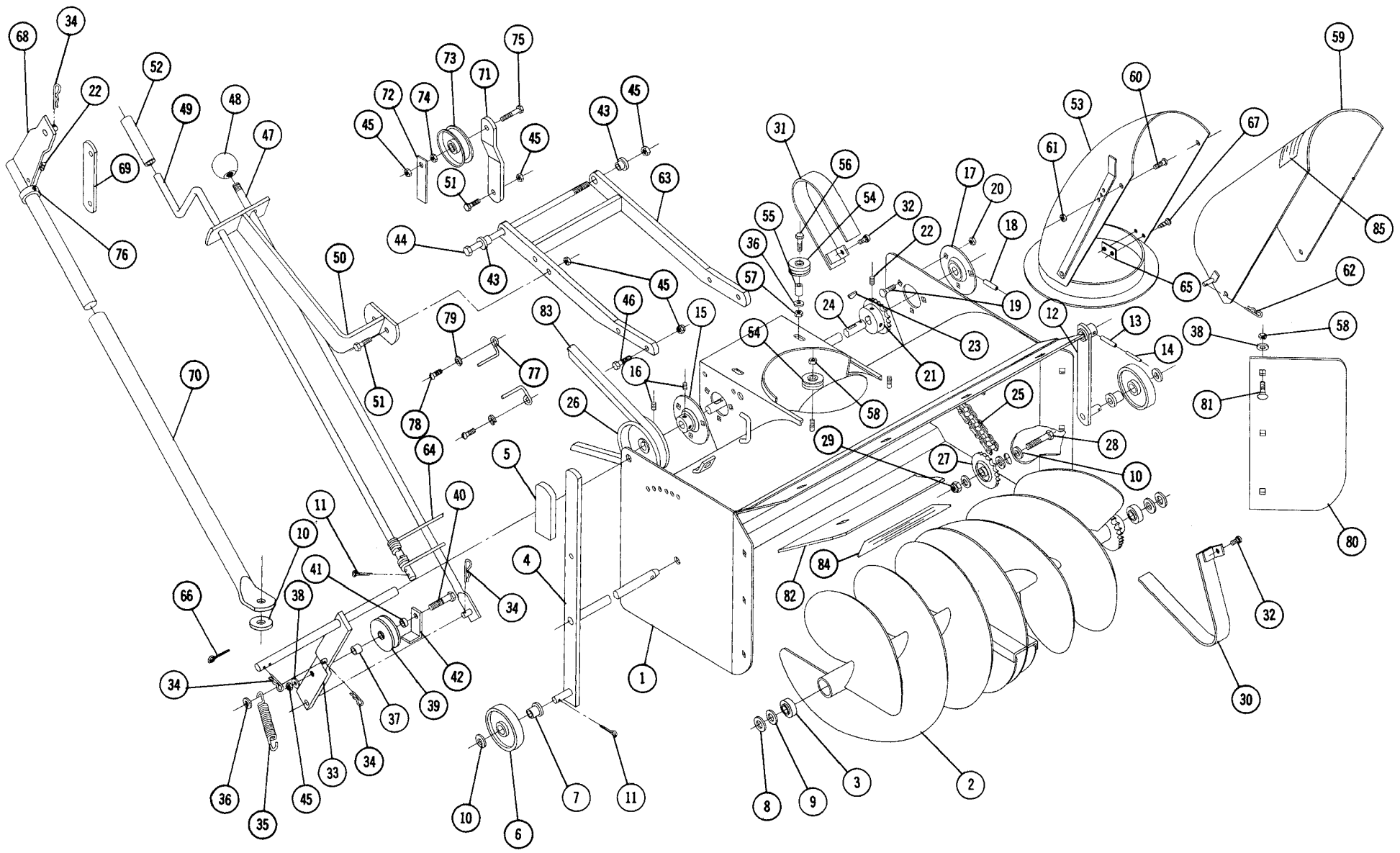
# SNOW THROW PARTS LIST 6-3211

Formerly STR-324

When ordering parts always list Part No. and Name of Part.

All specifications subject to change without notice.

Item No.	Part No.	Description	No. Req'd.	Item No.	Part No.	Description	No. Req'd.
1	2170	Ass'y Wrapper	1	44	900854-4	Bolt Square Head $\frac{3}{8}$ -16 x $8\frac{1}{2}$	1
2	2172	Ass'y Auger	1	45	915113-6	Nut $\frac{3}{8}$ -16 Nylok	10
3	5493	Bearing	2	46	908033-4	Bolt Hex $\frac{3}{8}$ -16 x $\frac{7}{8}$	4
4	5155	Ass'y Auger Shaft	1	47	4573	Ass'y Rod — Clutch	1
5	5359	Grip	1	48	1001	Knob	1
6	1987	Wheel	1	49	4572	Crank	1
7	1974	Bushing Nylon	1	50	5504	Control Guide Bracket	1
8	920225-4	Washer .080 Thick	2	51	908035-4	Bolt Hex $\frac{3}{8}$ -16 x $1\frac{1}{4}$	3
9	1278	Washer .050 Thick	2	52	4569	Tube	1
10	920011-4	Washer $\frac{1}{2}$ SAE	6	53	5220	Ass'y Shroud	1
11	932016-4	Cotter Pin $\frac{1}{8}$ x $\frac{3}{4}$	4	54	1973	Roller	4
12	5157	Ass'y Wheel Support	1	55	2163	Spacer	2
13	933215	Roll Pin $\frac{1}{4}$ x $1\frac{1}{4}$	1	56	908006-4	Bolt Hex $\frac{1}{4}$ -20 x $1\frac{1}{4}$	2
14	933173	Roll Pin $\frac{5}{32}$ x $1\frac{1}{4}$	1	57	915111-6	Nut Nylok $\frac{1}{4}$ -20	2
15	5269	Bearing — Flanged	1	58	915663-4	Nut $\frac{3}{8}$ -16 Elastic Stop	11
16	909862-5	Set Screw $\frac{5}{16}$ -18 x $\frac{5}{16}$ Nylok	4	59	2165	Ass'y Deflector	1
17	4571	Bearing Flanged	1	60	909052-4	Bolt Round Head $\frac{1}{4}$ -20 x $\frac{1}{2}$	2
18	933216	Roll Pin $\frac{1}{4}$ x $1\frac{3}{8}$	1	61	915661-4	Nut $\frac{1}{4}$ -20 Elastic	2
19	900037-4	Bolt Carriage $\frac{5}{16}$ -18 x $\frac{3}{4}$	6	62	933503-4	Hairpin Cotter	1
20	915112-6	Nut Nylok $\frac{5}{16}$ -18	6	63	5365	Ass'y. Mounting Frame	1
21	2176	Sprocket	1	64	4795	Cable	1
22	909848-5	Set Screw $\frac{1}{4}$ -20 x $\frac{1}{4}$ Nylok	3	65	6433	Speed Nut — Double #10	1
23	937014	Key #9 Woodruff	2	66	932034-4	Cotter Pin $\frac{3}{16}$ x 1	1
24	2083	Shaft — Drive	1	67	926306-4	Screw #10-16 x $\frac{1}{2}$ Self Tap	2
25	2175	Chain	1	68	1986	Ass'y Lift Rod	1
26	5499	Pulley Drive Shaft	1	69	5370	Link — Lift	1
27	2174	Sprocket Idler	1	70	3093	Ass'y Tube and Bar	1
28	908060-4	Bolt Hex $\frac{1}{2}$ -13 x $1\frac{3}{4}$	1	71	5619	Bracket — Idler	1
29	915115-6	Nut $\frac{1}{2}$ -13 Elastic Stop	1	72	5368	Bar Belt Guide	1
30	2089	Ass'y Guard — Inner	1	73	MW-8821	Pulley — Idler	1
31	2162	Ass'y Guard — Outer	1	74	915236-4	Nut Hex $\frac{3}{8}$ -16 Jam	1
32	1391	Screw $\frac{1}{4}$ -20 x $\frac{3}{8}$ Sems	4	75	908038-4	Bolt Hex $\frac{3}{8}$ -16 x 2	1
33	4576	Ass'y Idler Bracket	1	76	1085	Collar	1
34	933504-4	Hairpin Cotter	6	77	6149	Retainer — Belt	2
35	6651	Spring	1	78	3385	Screw — Round Head $\frac{5}{16}$ -24 x $\frac{3}{4}$	2
36	920007-4	Washer $\frac{1}{4}$ SAE	3	79	920082-4	Lockwasher $\frac{5}{16}$ Dia.	2
37	6309	Spacer	1	80	5502	Plate — Side Extension	2
38	920009-4	Washer $\frac{3}{8}$ SAE	11	81	900063-4	Bolt — Carriage $\frac{3}{8}$ -16 x 1	10
39	1623	Pulley — Idler	1	82	7497	Plate — Top Extension	1
40	908038-6	Bolt Hex $\frac{3}{8}$ -16 x 2 Nylok	1	83	1589	Belt — Drive	1
41	1967	Spacer $\frac{3}{16}$ Long	1	84	4498	Decal — General Caution	1
42	3760	Bracket Belt Guide	1	85	5604	Decal — Attachment	1
43	1982	Spacer	2				



---

Wheel Horse Service Bulletins 1961 - 1990: **#356** Issued: September 1983  
**Self-Aligning Ball Bearing (P/N 107744) Installation - Snowthrowers**

[Previous](#)   [Table of Contents](#)   [Next](#)

---

ST-326, ST-375, ST-376, STR-324,

**6-0200, 6-0201, 6-0202, 6-1211, 6-2211, 6-3211,**

**6-6211, 6-6212, 6-6213, 6-6214, 6-6215, 6-7212,**

**66-42ST01, 76-42ST01, 86-42ST01, 96-42ST01**

To All Dealers:

### 1. Subject

1.1 The current production self-aligning ball bearing, P/N 107744, is used as a substitute for bearings 4571, 100907, 101782, originally used on the above model snowthrowers. Because of a slight difference in the location of the spirol pin hole, some dealers and consumers have experienced difficulty installing it.

### 2. Service Action

2.1 The procedure to use when replacing only this bearing follows. It is suggested that both drive shaft bearings be replaced at the same time, which eliminates the need to loosen parts simply for alignment purposes.

ROUTING	SERVICE MANAGER	SALES MANAGER	PARTS MANAGER	CHIEF MECHANIC	MECHANIC NO 1	MECHANIC NO 2	MECHANIC NO 3	MECHANIC NO 4	RETURN THIS TO
INITIAL HERE →									

## Installation of P/N 107744 Bearing in

### Place of Original Bearing 4571, 100907, 101782

1. Loosen Set Screws - Be sure drive shaft is free to slide inside bearing and sprocket.
2. Remove and Replace 107744 Bearing - Drive spirol pin part way in to locate drive shaft.
3. Align Drive Pulley and Sprocket as Required - Drive spirol pin completely in and tighten set screws.

