

# PARTS LIST AND INSTRUCTIONS



WHEELHORSE PRODUCTS, INC. • SOUTH BEND, IND.

# SNOW THROWER

## MODEL 6-2211

(Formerly ST-326)

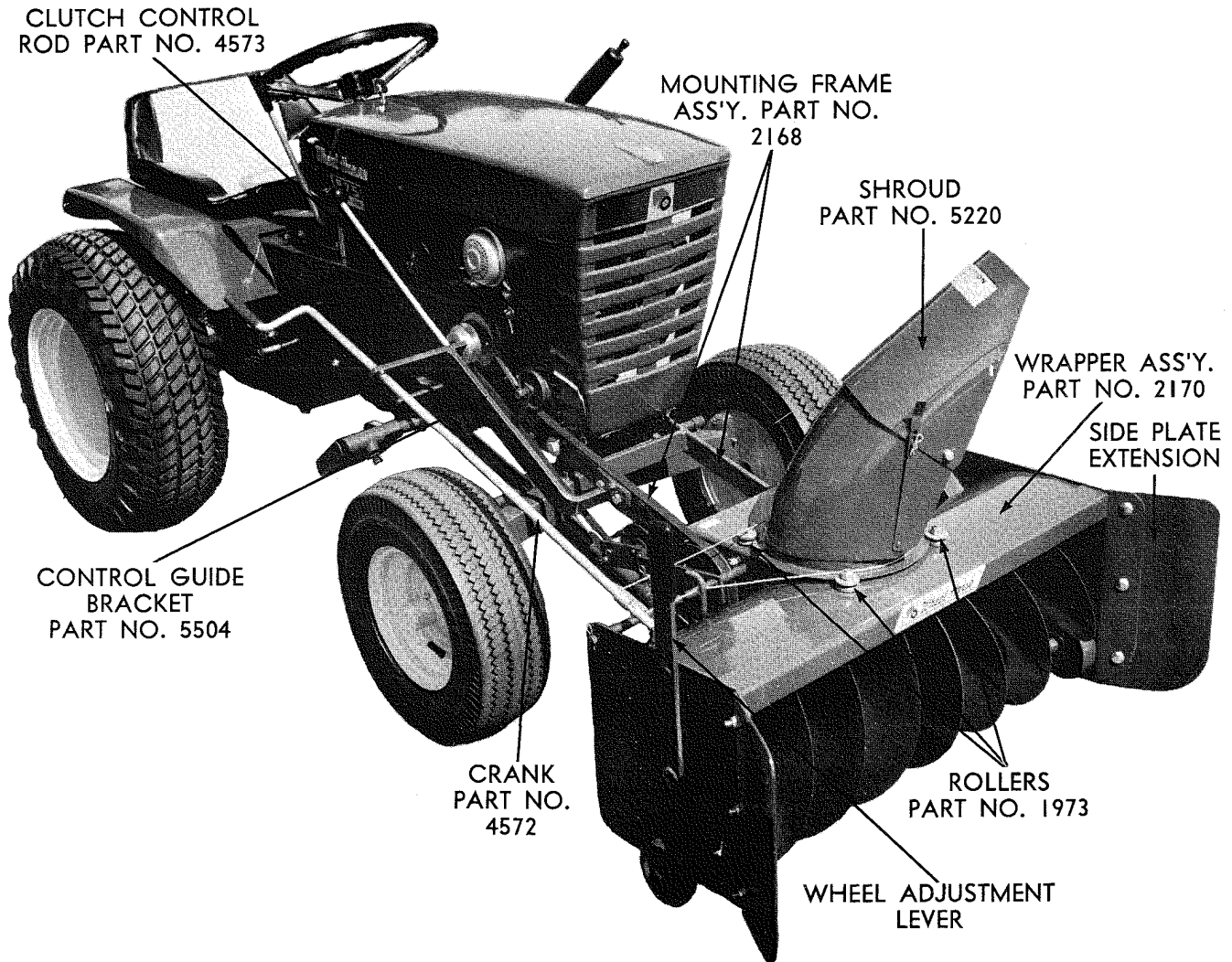


Figure 1

### ASSEMBLY

Remove Snow Thrower from carton and fasten Control Guide, Part No. 5504 to Mounting Frame, Part No. 2168. Secure with two  $\frac{3}{8}$ -16 x  $\frac{1}{4}$  Bolts, Part No. 908035-4 and  $\frac{3}{8}$ -16 Elastic Nuts, Part No. 915663-4. (NOTE: Be sure the Drive Belt, Part No. 1589 is on the inside of bracket toward the tractor.)

Install mounting frame to Wrapper Assembly, Part No. 2170 and secure with four  $\frac{3}{8}$ -16 x  $\frac{7}{8}$  Bolts, Part No. 908033-4 and Elastic Nuts, Part No. 915663-4.

Install the Shroud, Part No. 5220 in the grooves of the front and rear Rollers, Part No. 1973. Adjust rear rollers by sliding forward. Be sure rollers and shroud turn freely. Secure with two  $\frac{1}{4}$ -20 x  $\frac{1}{4}$  Bolts, Part No. 908006-4 and Hex Nylock Nuts, Part No. 915111-6.

Move wheel adjustment lever all the way forward so wheels are down. Roll the unit to the tractor and secure with two Mounting Spacers, Part No. 1982 and one  $\frac{3}{8}$ -16 x  $8\frac{1}{2}$  Bolt, Part No. 900854-4 and Nylock Nut, Part No. 915113-6.

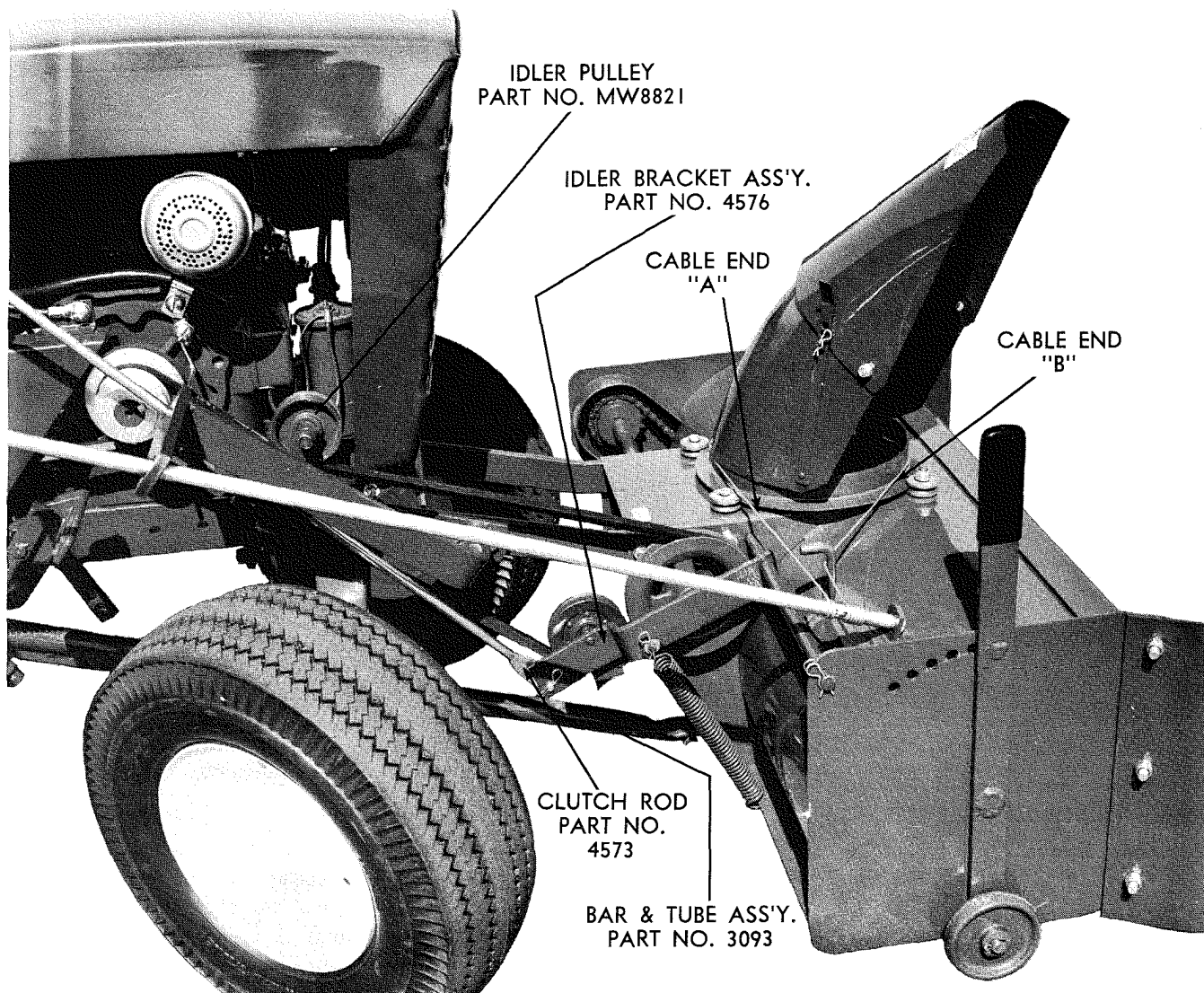


Figure 2

## ASSEMBLY (Continued)

Install Crank, Part No. 4572 thru the hole in the control guide, and thru the hole in the bracket on the Wrapper Assembly, Part No. 2170. Secure with Cotter Pin,  $\frac{1}{8} \times 1$ , Part No. 932017-4. Bend both ends around the crank.

Install Drive Belt, Part No. 1598 on inside groove on the tractor engine pulley.

Install the Idler Bracket, Part No. 5619 with the  $\frac{3}{8}$ -16 x  $1\frac{1}{4}$  Bolt, Part No. 908035-4 in the second hole from the end of the tractor frame. The belt should ride on the bottom of Idler Pulley, Part No. MW8821. The Spacer, Part No. 4937, fits between bracket and pulley (as shown on parts drawing). Install Clutch Rod, Part No. 4573 thru slot in control guide and secure to idler bracket, with Hairpin

Cotter, Part No. 933504-4 (Fig. 2). Install Lift Rod, Part No. 1986 to top hole in bottom arm of tractor lift lever and secure with Hairpin Cotter, Part No. 933504-4.

The top hole in the tractor lift lever must be enlarged to  $\frac{13}{32}$  in diameter on all 701, 552, 502, and 702 tractors.

Slide Tube and Bar Assembly, Part No. 3093 over Lift Rod, Part No. 1986 and over pin located at lower rear center of Snow Thrower, secure with  $\frac{1}{2}$ " Flat Washer, Part No. 920011-4 and Cotter Pin, Part No. 932034-4.

Fasten the Belt Retainers, Part No. 6149 to the engine with  $\frac{5}{16}$ -24 x  $\frac{3}{4}$  Screws, Part No. 3385 and  $\frac{5}{16}$  Lock Washer, Part No. 920082-4 on all tractors with Lauson engines, tractors with 6, 7 and 8 H.P. Kohler engines use  $\frac{3}{8}$ -16 x  $\frac{3}{4}$  Screws, Part No. 909084-4 and  $\frac{3}{8}$  Lock Washers, Part No. 920083-4.

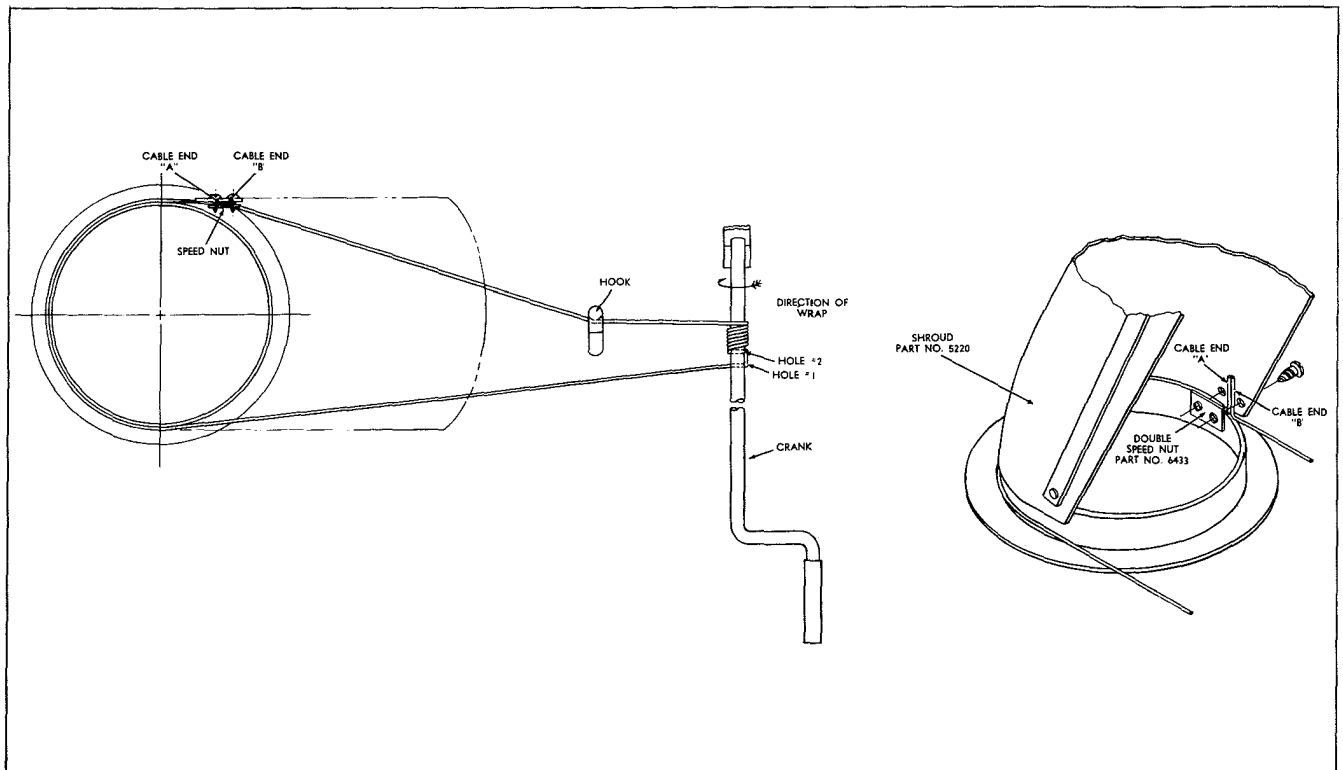


Figure 3

**CABLE WRAPPING INSTRUCTIONS:**

1. Face Shroud, Part No. 5520 to the right. (See Fig. 3.)
2. Thread Cable, Part No. 4795, end "A" up under the Double Speed Nut, Part No. 6433, and tighten screws just enough to retain cable.
3. Pull cable around the shroud and thread end "B" of cable through hole #1 then back through hole #2 in Crank, Part No. 4572, and then wrap

4. Face shroud forward and grip both ends of cable with pliers and pull until cable is tight. Tighten screws in speed nut securely.

To increase snow removal width mount side Extension Plates, Part No. 5502 to the sides of the Wrapper Assembly, Part 2170. Secure Extension Plates, Part No. 5502 with the three 3/8-16 x 1 Carriage Bolts, Part No. 900063-4, and 3/8 diameter Washers, Part No. 920009-4 and 3/8-16 Elastic Nuts, Part No. 915663-4.

**OPERATION**

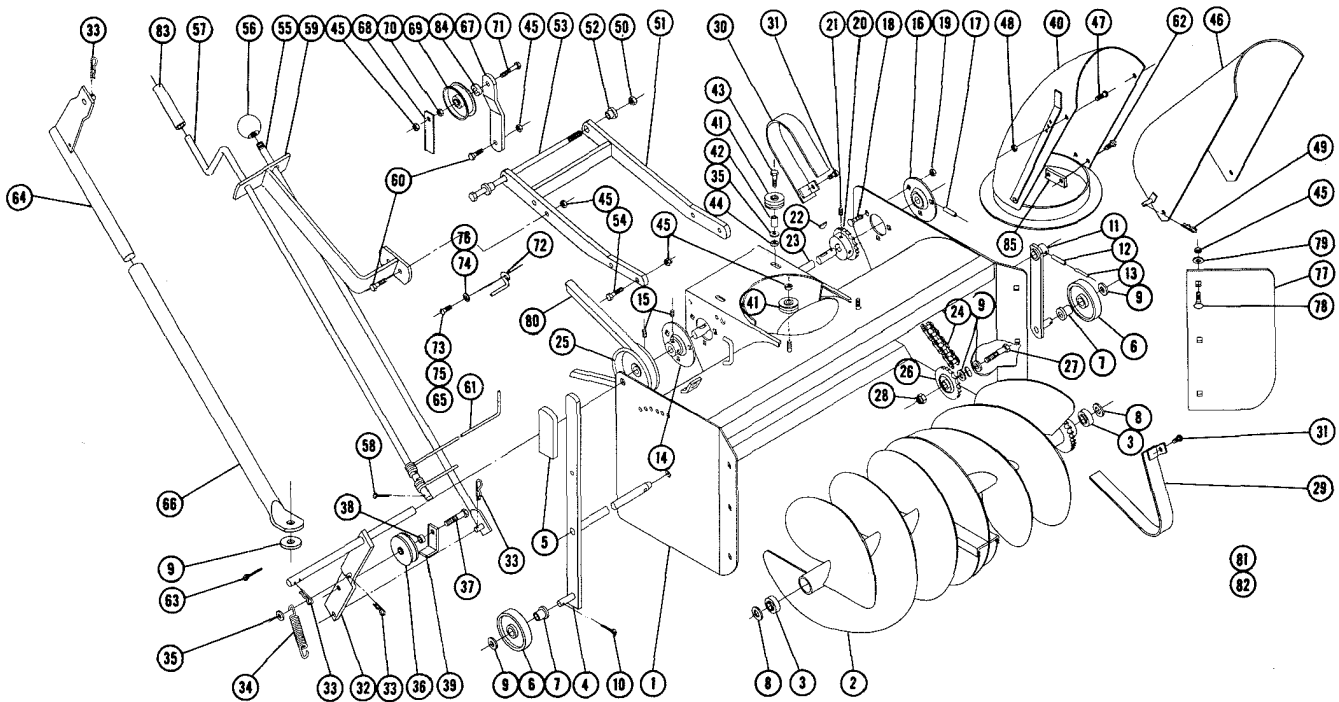
The adjustable shroud allows the operator to control the direction the snow may be thrown by turning the convenient crank. The upper part of the snow shroud is adjustable to deflect the snow in an upward or downward direction depending upon conditions. There are wheels on each side for raising or lowering to prevent the Snow Thrower from catching on uneven surfaces. Under some conditions it will be necessary to coat the auger, shroud and the inside with paraffin or wax to prevent snow and ice from sticking. Best results are obtained with slow forward movement of the tractor and high auger speed, therefore under normal conditions the tractor should be operated in first gear with full throttle.

**CAUTION** — Engage clutch gently. Do not snap into engagement. Be especially careful after the blower has set outdoors after use. The auger could be frozen to the deck. Always shut off the engine before making any adjustment or lubrication.

After the first hour of use recheck all bolts, nuts, and set screws — tighten securely. Check chains and belt alignment. Keep children and pets away while operating, there may be rocks or metal in the snow which could be thrown forward or out the chute. Never permit anyone to stand in front of blower when engine is running.

**LUBRICATION**

The drive chain should be oiled with a light grade of machine oil. All other bearing and movable parts should be oiled frequently. In storing the Snow Thrower, it is advisable to coat the auger with a heavy machine oil to prevent rust.



## PARTS LIST

When ordering parts always list Part No. and name of part.

Ref. No.	Part No.	Description	No. Req'd.	Ref. No.	Part No.	Description	No. Req'd.
1	2170	Ass'y. Wrapper	1	45	915113-6	Nut $\frac{3}{8}$ -16 Nylok	15
2	2172	Ass'y. Auger	1	46	2165	Ass'y. Deflector	1
3	5493	Bearing	2	47	909052-4	Bolt - Rd. Hd. $\frac{1}{4}$ -20 x $\frac{1}{2}$	2
4	5155	Ass'y. Auger Shaft	1	48	915661-4	Nut $\frac{1}{4}$ -20 Elastic Stop	2
5	5359	Grip	1	49	933503-4	Hairpin Cotter	1
6	1987	Wheel	2	50	915113-6	Nut $\frac{3}{8}$ -16 Nylok	1
7	1974	Bushing - Nylon	2	51	2168	Ass'y. Mounting Frame (TS-326)	1
8	1278	Washer - Auger	2	52	1982	Spacer	2
9	920011-4	Washer $\frac{1}{2}$ S. A. E.	5	53	900854-4	Bolt - Square Hd. $\frac{3}{8}$ -16 x $8\frac{1}{2}$	1
10	932016-4	Cotter Pin $\frac{1}{8}$ x $\frac{3}{4}$	2	54	908033-4	Bolt - Hex. $\frac{3}{8}$ -16 x $\frac{7}{8}$	4
11	5157	Ass'y. Wheel Support	1	55	4573	Ass'y. Rod - Clutch	1
12	933215	Roll Pin $\frac{1}{4}$ x $1\frac{1}{4}$	1	56	1001	Knob	1
13	933173	Roll pin $\frac{5}{32}$ x $1\frac{1}{4}$	1	57	4572	Crank	1
14	5269	Bearing - Flanged Ball	1	58	932016-4	Cotter Pin $\frac{1}{8}$ x $\frac{3}{4}$	2
15	909862-5	Set Screw $\frac{5}{16}$ -18 x $\frac{3}{16}$ Nylok	4	59	5504	Ass'y. Bracket - Control Guide	1
16	4571	Bearing - Flanged Ball	1	60	908035-4	Bolt - Hex. $\frac{3}{8}$ -16 x $1\frac{1}{4}$	3
17	933216	Roll Pin $\frac{1}{4}$ x $1\frac{3}{8}$	1	61	4795	Cable	1
18	900037-4	Bolt - Carriage $\frac{5}{16}$ -18 x $\frac{3}{4}$	6	62	926306-4	Screw - Round Hd. Mach. #10-16 x $\frac{1}{2}$	2
19	915112-6	Nut - Nylok $\frac{5}{16}$ -18	6	63	932034-4	Cotter Pin $\frac{3}{16}$ x 1	1
20	2176	Sprocket	1	64	1986	Ass'y. Lift Rod	1
21	909848-5	Set Screw $\frac{1}{4}$ -20 x $\frac{1}{4}$ Hex. Soc. Nylok	2	65	909070-4	Screw Round Hd. $\frac{5}{16}$ -18 x $\frac{3}{4}$ (Kohler 10 H.P.)	2
22	937014	Key #9 Woodruff	2	66	3093	Ass'y. Tube & Bar	1
23	2083	Shaft - Drive	1	67	5619	Bracket - Idler	1
24	2175	Chain	1	68	5368	Bar - Belt Guide	1
25	5499	Pulley - Drive Shaft	1	69	MW8821	Pulley - Idler	1
26	2174	Sprocket - Idler	1	70	915236-4	Nut - Hex. $\frac{3}{8}$ -16 Jam	1
27	908060-4	Bolt Hex. $\frac{1}{2}$ -13 x $1\frac{3}{4}$	1	71	908039-4	Bolt - Hex. $\frac{3}{8}$ -16 x $2\frac{1}{4}$	1
28	915115-6	Nut $\frac{1}{2}$ -13 Elastic Stop	1	72	6149	Belt Retainer	2
29	2089	Ass'y. Guard - Inner	1	73	3385	Screw Round Hd. $\frac{5}{16}$ -24 x $\frac{3}{4}$ (Lauson)	2
30	2162	Ass'y. Guard - Outer	1	74	920082-4	Lockwasher $\frac{5}{16}$ Dia. (Lauson)	2
31	1391	Screw - Sems $\frac{1}{4}$ -20 x $\frac{3}{8}$	4	75	909084-4	Screw Round Hd. $\frac{3}{8}$ -16 x $\frac{3}{4}$ (Kohler 7 H.P.)	2
32	4576	Ass'y. Idler Bracket	1	76	920083-4	Lockwasher $\frac{3}{8}$ Dia. (Kohler)	2
33	933504-4	Hairpin Cotter	6	77	5502	Plate - Side Extension	2
34	6651	Spring	1	78	900063-4	Bolt - Carriage $\frac{3}{8}$ -16 x 1	6
35	920007-4	Washer $\frac{1}{4}$ S. A. E.	3	79	920009-4	Washer $\frac{3}{8}$ Dia. S. A. E.	6
36	1623	Pulley - Idler	1	80	1589	Belt - Drive	1
37	908035-6	Bolt $\frac{3}{8}$ -16 x $1\frac{1}{4}$ Hex. Nylok	1	81	7637	Decal - General Caution	1
38	1536	Spacer $\frac{3}{16}$ Long	1	82	5604	Decal - Attachment	1
39	3760	Bracket - Belt Guide	1	83	4569	Tube (Rubber)	1
40	5220	Ass'y. Shroud	1	84	4937	Spacer	1
41	1973	Roller	4	85	6433	Speed Nut - Double #10	2
42	2163	Spacer	2				
43	908006-4	Bolt - Hex. $\frac{1}{4}$ -20 x $1\frac{1}{4}$	2				
44	915111-6	Nut Nylok $\frac{1}{4}$ -20	2				

SUPPLEMENTAL SHEET FOR 6-2211 (ST 326) SNOW THROWER

For Mounting To Wheel Horse Tractors  
Short Wheel Base (41½").

In order to provide our customers with the most up to date improvements the following changes have been made since the ST326 Manual was published;

Refer to the parts list, back page.

REF. NO.	SHOULD BE	DESCRIPTION	REQ'D.
37	908038-4	Bolt-3/8-16x2 Hex Hd.	1
38	1967	Spacer-(5/16) *	1
New	6309	Spacer-(½") *	1
New	920009-4	Washer - 3/8 SAE	1
New	915113-6	Nut - 3/8-16 Nylok	1
New	7497	Plate-Top Extension	1

\*See Supplement Instructions for location of Spacers.

SUPPLEMENT INSTRUCTIONS:

To obtain proper belt alignment it is necessary to check the following before attaching the Snow Thrower Unit to a Tractor:

Check the spacer location on the belt clutch Idler Pulley.

FOR GEAR DRIVE TRACTORS:

The ½" spacer (longest) is to be between the Clutch Arm #4576 (Ref. #32) and the Idler Pulley (Ref. #36). The shorter spacer is to be between the Idler Pulley and the Belt Guide (Ref. #39). Make sure the Driver Pulley (Ref. #25) is aligned with the Idler Pulley.

FOR WHEEL-A-MATIC TRACTORS:

The shorter spacer is to be between the Clutch Arm #4576 (Ref. #32) and Idler Pulley (Ref. #36) and the ½" (longer) is to be between the Idler Pulley and the Belt Guide (Ref. #39). Make sure that the Driver Pulley (Ref #25) is aligned with the Idler Pulley.

---

Wheel Horse Service Bulletins 1961 - 1990: **#356** Issued: September 1983  
**Self-Aligning Ball Bearing (P/N 107744) Installation - Snowthrowers**

[Previous](#)   [Table of Contents](#)   [Next](#)

---

ST-326, ST-375, ST-376, STR-324,

**6-0200, 6-0201, 6-0202, 6-1211, 6-2211, 6-3211,**

**6-6211, 6-6212, 6-6213, 6-6214, 6-6215, 6-7212,**

**66-42ST01, 76-42ST01, 86-42ST01, 96-42ST01**

To All Dealers:

### 1. Subject

1.1 The current production self-aligning ball bearing, P/N 107744, is used as a substitute for bearings 4571, 100907, 101782, originally used on the above model snowthrowers. Because of a slight difference in the location of the spirol pin hole, some dealers and consumers have experienced difficulty installing it.

### 2. Service Action

2.1 The procedure to use when replacing only this bearing follows. It is suggested that both drive shaft bearings be replaced at the same time, which eliminates the need to loosen parts simply for alignment purposes.

ROUTING	SERVICE MANAGER	SALES MANAGER	PARTS MANAGER	CHIEF MECHANIC	MECHANIC NO 1	MECHANIC NO 2	MECHANIC NO 3	MECHANIC NO 4	RETURN THIS TO
INITIAL HERE →									

## Installation of P/N 107744 Bearing in

### Place of Original Bearing 4571, 100907, 101782

1. Loosen Set Screws - Be sure drive shaft is free to slide inside bearing and sprocket.
2. Remove and Replace 107744 Bearing - Drive spirol pin part way in to locate drive shaft.
3. Align Drive Pulley and Sprocket as Required - Drive spirol pin completely in and tighten set screws.

