

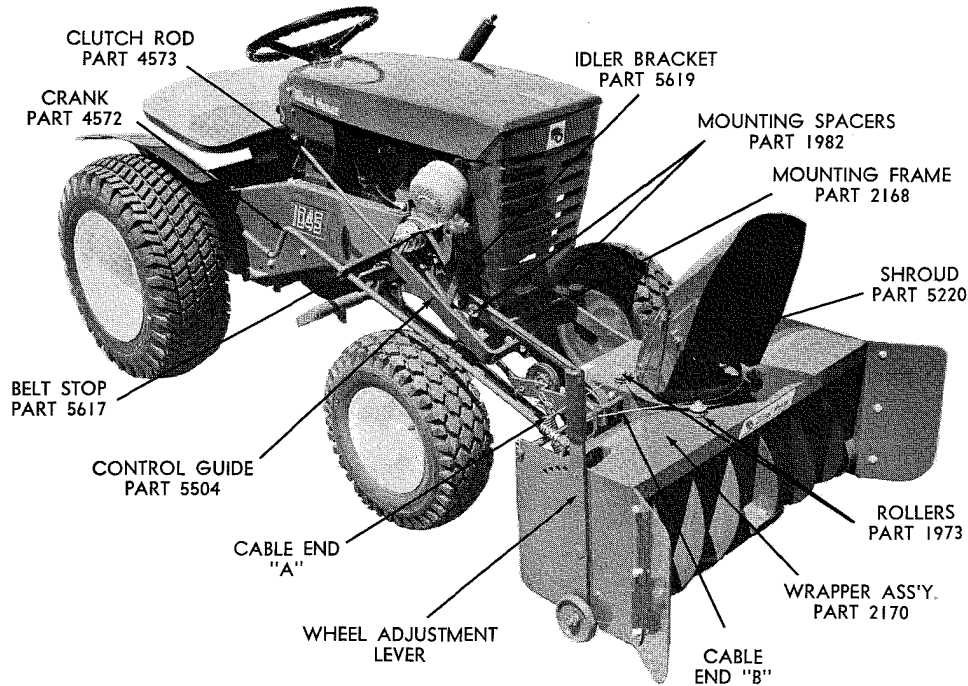
# PARTS LIST AND INSTRUCTIONS



*Wheel Horse*

WHEELHORSE PRODUCTS, INC. • SOUTH BEND, IND.

# SNOW THROWER ST-325



## ASSEMBLY

Remove Snow Thrower from carton and fasten control guide, part 5504 to mounting frame, part 2168. Secure with two  $\frac{3}{8}$ -16 x  $1\frac{1}{4}$  bolts, part 908035-4 and  $\frac{3}{8}$ -16 elastic nuts, part 915663-4. (NOTE: Be sure the drive belt, part 1589 is on the inside of bracket toward the tractor).

Install mounting frame to wrapper assembly, part 2170 and secure with four  $\frac{3}{8}$ -16 x  $\frac{7}{8}$  bolts, part 908033-4 and elastic nuts, part 915663-4.

Install the shroud, part 5220 in the grooves of the front and rear rollers, part 1973. Adjust rear rollers by sliding forward. Be sure rollers and shroud turn freely. Secure with two  $\frac{1}{4}$ -20 x  $1\frac{1}{4}$  bolts, part 908006-4 and hex nylock nuts, part 915111-6.

Move wheel adjustment lever all the way forward so wheels are down. Roll the unit to the tractor and secure with two mounting spacers, part 1982 and one  $\frac{3}{8}$ -16 x  $8\frac{1}{2}$  bolt part 900854-4 and nylock nut. part 915113-6.

Install crank, part 4572 thru the hole in the control guide, and thru the hole in the bracket on the wrapper assembly, part 2170. Secure with cotter pin,  $\frac{1}{8}$  x 1, part 932017-4. Bend both ends around the crank.

Install drive belt, part 1589 on inside groove on the tractor engine pulley.

Install the idler bracket, part 5619 with the  $\frac{3}{8}$ -16 x  $1\frac{1}{4}$  bolt, part 908035-4 in the second hole from the end of the tractor frame. The belt should ride on the bottom of idler pulley, part MW8821. The spacer, part

4937, fits between bracket and pulley (as shown on parts drawing), for the 1045 tractor. All other tractors it will fit between the pulley and the  $\frac{3}{8}$  jam nut, part 915236-4.

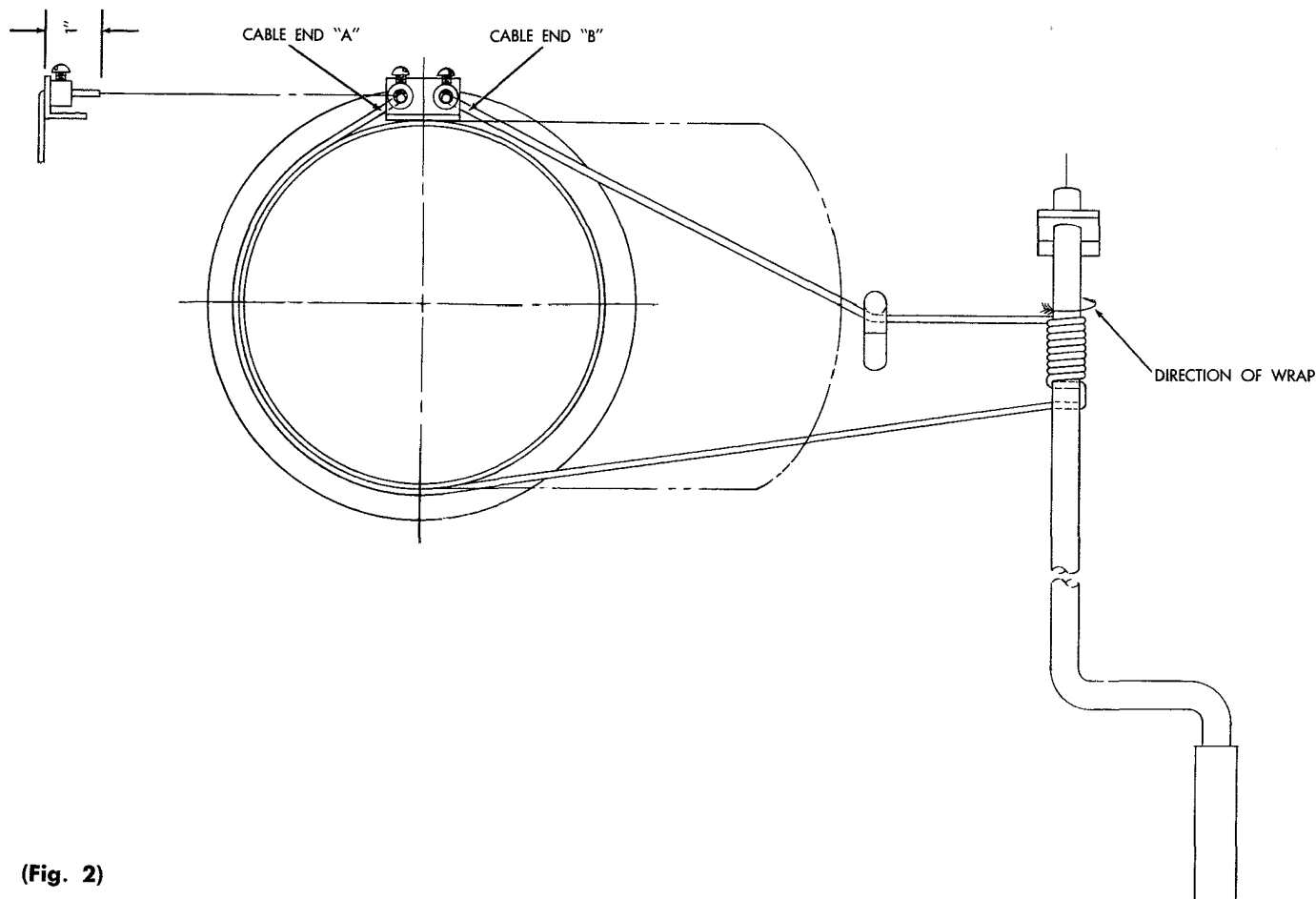
Install clutch rod, part 4573 thru slot in control guide and secure to idler bracket, with hairpin cotter, part S-52-4. Install lift rod, part 1986 to top hole in bottom arm of tractor lift lever and secure with hairpin cotter, part S-52-4.

The top hole in the tractor lift lever must be enlarged to  $\frac{1}{32}$  in diameter on all 701, 552, 502, and 702 tractors.

Slide tube and bar assembly, part 3093 over lift rod, part 1986 and over pin located at lower rear center of Snow Thrower, secure with  $\frac{1}{2}$ " flat washer, part 920011-4 and cotter pin, part 932034-4.

Fasten the belt stop, part 5617 to the engine with  $\frac{5}{16}$ -24 x  $\frac{3}{4}$  screw, part 3385 and  $\frac{5}{16}$  lock washer, part 920082-4 on all tractors with Lauson engines, tractors with 6, 7 and 8 H.P. Kohler engines use  $\frac{3}{8}$ -16 x  $\frac{3}{4}$  screw, part 909084-4 and  $\frac{3}{8}$  lock washer, part 920083-4. Tractors with 10 H.P. Kohler engines use  $\frac{5}{16}$ -18 x  $\frac{3}{4}$  screw, part 909070-4 and  $\frac{5}{16}$  lockwasher, part 920083-4.

To increase snow removal width mount side extension plates, part 5502 to the sides of the wrapper assembly, part 2170. Secure extension plates, part 5502 with the three  $\frac{3}{8}$ -16 x 1 carriage bolts, part 90063-4, and  $\frac{3}{8}$  diameter washers, part 920009-4 and  $\frac{3}{8}$ -16 elastic nuts, part 915663-4.



(Fig. 2)

## CABLE WRAPPING

1. Face shroud, part 5220 to the right.
2. Thread cable, part 4795 end "A" up thru hole in collar on the shroud about 1" and secure with screw, part 908980-4.
3. Pull cable around the shroud and thread end of cable "B" thru the top hole in crank, part 4572 and back thru the bottom hole of crank. Wrap

8 complete turns down in direction shown, see Fig. 2. Finish last turn on bottom of crank. Pull cable end "B" behind the hook on the wrapper assembly and thread up thru the second hole in shroud. Secure with screw, part 908980-4.

4. Face shroud forward and grip cable end "A" with pliers. Loosen screw, pull cable tight and secure with screw.

## OPERATION

The adjustable shroud allows the operator to control the direction the snow may be thrown by turning the convenient crank. The upper part of the snow shroud is adjustable to deflect the snow in an upward or downward direction depending upon conditions. There are wheels on each side for raising or lowering to prevent the Snow Thrower from catching on uneven surfaces. Under some conditions it will be necessary to coat the auger, shroud and the inside with paraffin or wax to prevent snow and ice from sticking. Best results are obtained with slow forward movement of the tractor and high auger speed, therefore under normal conditions the tractor should be operated in first gear with full throttle.

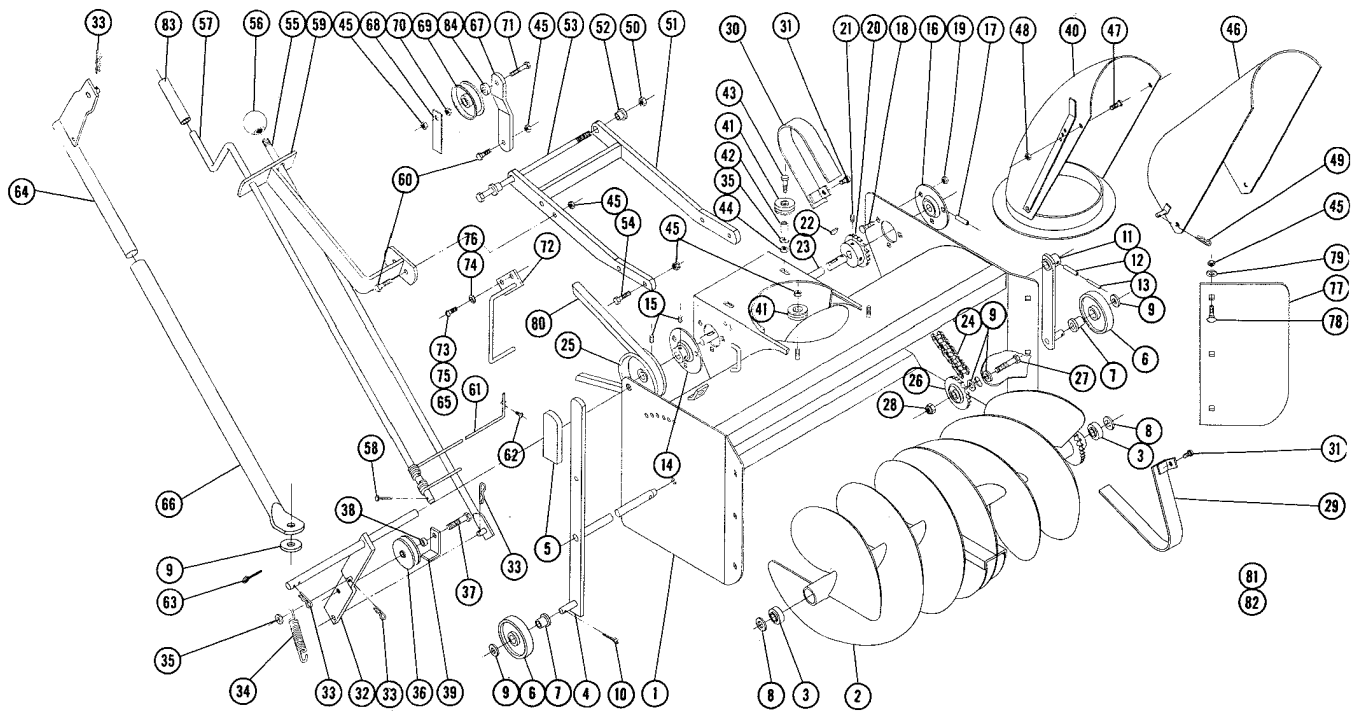
**CAUTION** — Engage clutch gently. Do not snap into engagement. Be especially careful after the

blower has set outdoors after use. The auger could be frozen to the deck. Always shut off the engine before making any adjustment or lubrication.

After the first hour of use recheck all bolts, nuts, and set screws — tighten securely. Check chains and belt alignment. Keep children and pets away while operating, there may be rocks or metal in the snow which could be thrown forward or out the chute. Never permit anyone to stand in front of blower when engine is running.

## LUBRICATION

The drive chain should be oiled with a light grade of machine oil. All other bearing and movable parts should be oiled frequently. In storing the Snow Thrower, it is advisable to coat the auger with a heavy machine oil to prevent rust.



## PARTS LIST

When ordering parts always list Part No. and name of part.

Ref. No.	Part No.	Description	No. Req'd.	Ref. No.	Part No.	Description	No. Req'd.
1	2170	Ass'y. Wrapper	1	44	915111-6	Nut Nylok 1/4-20	2
2	2172	Ass'y. Auger	1	45	915663-4	Nut 3/8-16 Elastic Stop	16
3	5493	Bearing	2	46	2165	Ass'y. Deflector	1
4	5155	Ass'y. Auger Shaft	1	47	909052-4	Bolt - Rd. Hd. 1/4-20 x 1/2	2
5	5359	Grip	1	48	915661-4	Nut 1/4-20 Elastic Stop	2
6	1987	Wheel	2	49	S-52-3	Hairpin Cotter	1
7	1974	Bushing - Nylon	2	50	915113-6	Nut 3/8-16 Nylok	1
8	2090	Washer - Auger	2	51	2168	Ass'y. Mounting Frame (ST-325)	1
9	920011-4	Washer 1/2 S. A. E.	5	52	1982	Spacer	2
10	932016-4	Cotter Pin 1/8 x 3/4	2	53	900854-4	Bolt - Square Hd. 3/8-16 x 8 1/2	1
11	5157	Ass'y. Wheel Support	1	54	908033-4	Bolt - Hex. 3/8-16 x 7/8	4
12	933215	Roll Pin 1/4 x 1 1/4	1	55	4573	Ass'y. Rod - Clutch	1
13	933173	Roll Pin 3/32 x 1 1/4	1	56	1001	Knob	1
14	5269	Bearing - Flanged Ball	1	57	4572	Crank	1
15	909862-6	Set Screw 5/16-18 x 5/16 Nylok	4	58	932017-4	Cotter Pin 1/8 x 1	1
16	4571	Bearing - Flanged Ball	1	59	5504	Ass'y. Bracket - Control Guide	1
17	933216	Roll Pin 1/4 x 1 3/8	1	60	908035-4	Bolt - Hex. 3/8-16 x 1 1/4	3
18	900037-4	Bolt - Carriage 5/16-18 x 3/4	6	61	4795	Cable	1
19	915112-6	Nut - Nylok 3/16-18	6	62	908980-4	Screw - Round Hd. Mach #6-32 x 1/4	2
20	2176	Sprocket	1	63	932034-4	Cotter Pin 3/16 x 1	1
21	909848-6	Set Screw 1/4-20 x 1/4 Hex. Soc Nylok	2	64	1986	Ass'y. Lift Rod	1
22	937014	Key #9 Woodruff	2	65	909070-4	Screw Round Hd. 5/16-18 x 3/4 (Kohler 10 H.P.)	1
23	2083	Shaft - Drive	1	66	3093	Ass'y. Tube & Bar	1
24	2175	Chain	1	67	5619	Bracket - Idler	1
25	5499	Pulley - Drive Shaft	1	68	5368	Bar - Belt Guide	1
26	2174	Sprocket - Idler	1	69	MW8821	Pulley - Idler	1
27	908060-4	Bolt Hex. 1/2-13 x 1 3/4	1	70	915236-4	Nut - Hex. 3/8-16 Jam	1
28	915665-4	Nut 1/2-13 Elastic Stop	1	71	908039-4	Bolt - Hex. 3/8-16 x 2 1/4	1
29	2089	Ass'y. Guard - Inner	1	72	5617	Ass'y. Belt Stop	1
30	2162	Ass'y. Guard - Outer	1	73	3385	Screw Round Hd. 5/16-24 x 3/4 (Lauson)	1
31	1391	Screw - Sems 1/4-20 x 3/8	4	74	920082-4	Lockwasher 3/16 Dia. (Lauson)	1
32	4576	Ass'y. Idler Bracket	1	75	909084-4	Screw Round Hd. 3/8-16 x 3/4 (Kohler 7 H.P.)	1
33	S-52-4	Hairpin Cotter	6	76	920083-4	Lockwasher 3/8 Dia. (Kohler)	1
34	5185	Spring	1	77	5502	Plate - Side Extension	2
35	920007-4	Washer 1/4 S.A.E.	3	78	900063-4	Bolt - Carriage 3/8-16 x 1	6
36	1623	Pulley - Idler	1	79	920009-4	Washer 3/8 Dia. S.A.E.	6
37	908035-6	Bolt 3/8-16 x 1 1/4 Hex. Nylok	1	80	1589	Belt - Drive	1
38	1536	Spacer 3/16 Long	1	81	4498	Decal - General Caution	1
39	3760	Bracket - Belt Guide	1	82	4411	Decal - Attachment	1
40	5220	Ass'y. Shroud	1	83	4569	Tube (Rubber)	1
41	1973	Roller	4	84	4937	Spacer	1
42	2163	Spacer	2				
43	908006-4	Bolt - Hex. 1/4-20 x 1 1/4	2				