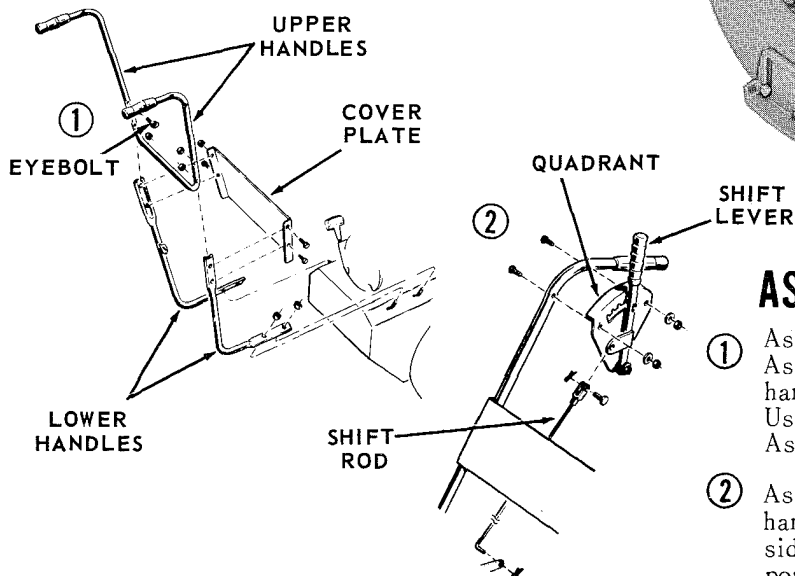


PARTS LIST AND INSTRUCTIONS

REO

WHEELHORSE PRODUCTS, INC. • SOUTH BEND, IND.

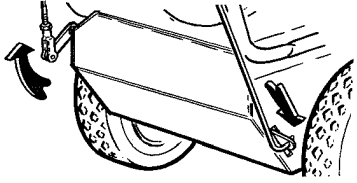
SNOW THROW MODELS 626 ST 626 STE



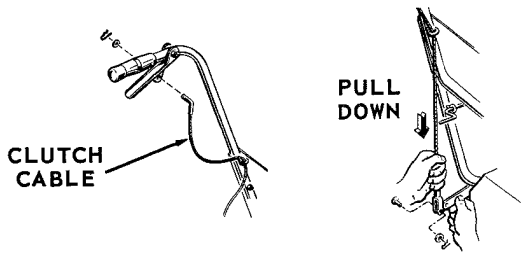
ASSEMBLING UNIT • • •

- ① Assemble lower handles to unit with nuts provided. Assemble upper handles and cover plate to lower handles, place bolt through plate and both handles. Use eyebolt in upper left hole with eye to inside. Assemble nuts, and tighten securely.
- ② Assemble shift lever and quadrant to upper right handle. Attach shift rod to lever on the lower right side of unit. Place shift lever in the No. 4 forward position.

Grasp lever on lower left side of unit with the left hand and pull up. With the right hand, push down as far as possible on the lever on the lower right side of unit. Now release both levers. Lengthen or shorten shift rod by turning clevis so pin will slide into position easily. Reassemble shift rod to unit. Install and secure with retaining ring.

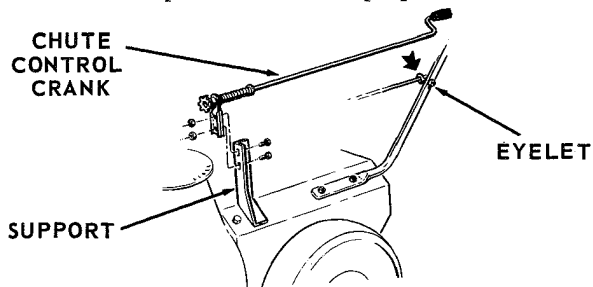


Disconnect lower end of clutch cable from unit if connected. With one hand, pull down on lower end of cable as far as possible.



With the other hand pull up on the clutch lever on lower left side of unit just enough to take up the play. At this point cable should be just long enough, so holes in clevis line up with hole in lever, if cable is too long or too short, adjust to proper length with clevis, leaving a little slack in cable. Pin should now slide in freely.

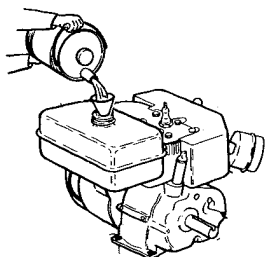
Assemble chute control crank through eyelet on lower left handle and attach the other end, with gear and bracket, to support which is welded to unit near the chute. Teeth of sprocket must engage squarely in holes at base of chute. Slotted holes in bracket are provided for this purpose.



OIL and GASOLINE • • •

DO NOT MIX OIL WITH GASOLINE.

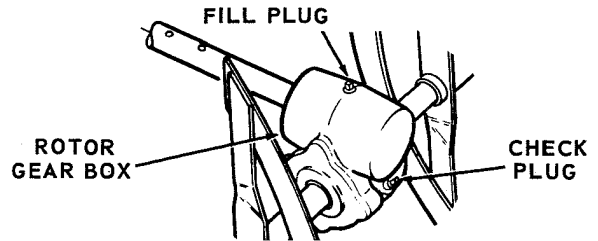
Fill gas tank with clean regular gasoline. Premium grade Ethyl *is not recommended.*



Fill crankcase with oil. #5w20 motor oil is recommended. Detergent oil and 10w30 all-season motor oils **ARE NOT RECOMMENDED.** Be sure unit is level, and fill up to (Full) mark on dip stick.

CAUTION - DO NOT OVER FILL.

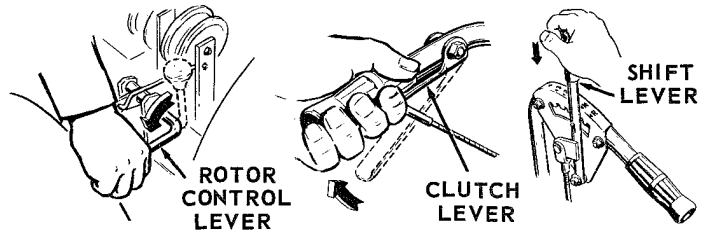
Remove oil check plug and fill plug. Fill rotor gear box with SAE #30 motor oil until oil runs out of check plug hole.



SAFETY FIRST • • •

BEFORE STARTING fill crankcase with oil as outlined under (Oil and Gasoline).

For safe starting, first pull down rotor control lever, to disengage Rotor. Depress clutch lever, push down on handle of shift lever and place it in the neutral position. You are now ready to start the engine as outlined under "Starting".



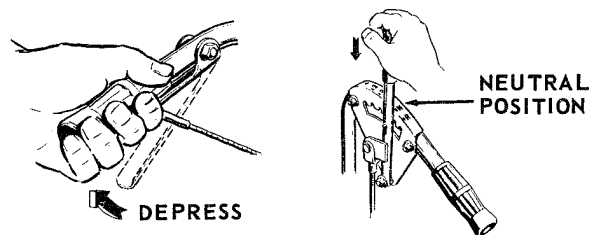
NOTE: When neutral position is desired, be sure lever is securely locked in this position.

To avoid accidents, **shut off engine** before adding gas or oil, before making adjustments, or inspections of any kind.

CAUTION: Never attempt to remove obstructions from the front of the unit, from the rotor, or the chute, until the engine has stopped and the rotor has stopped turning.

STARTING • • •

RECOIL STARTERS



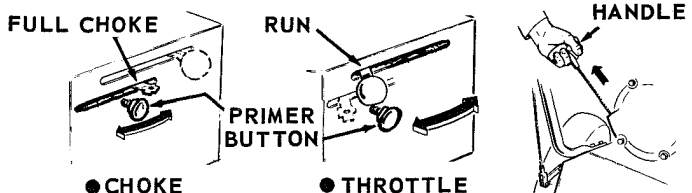
Grasp clutch lever and depress, with clutch lever depressed place shift lever in neutral position. Push down on rotor control lever to disengage.

PRE-START:

1. Refuel engine with fresh winter blend regular gasoline from sealed container.
2. Place manual choke in full choke position.
3. Place throttle in run position.
4. Open fuel shut off valve on gas tank. (When equipped with shut off valve.)

STARTING PROCEDURE:

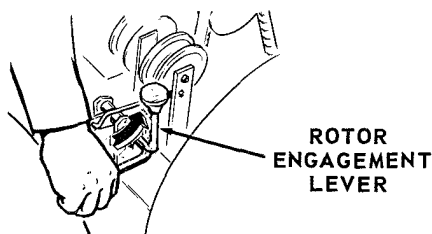
1. Temperatures 10° F. and below use "M.T. Primer."
 - A. To Prime Engine:
 1. With primer button held in, pull engine slowly over compression once.
 2. Release primer button.
 2. To start, pull engine on compression, then pull starter handle quickly.
 3. When engine starts, advance choke immediately to $\frac{3}{4}$ choke position (first notch).
 4. As the engine warms up advance to $\frac{1}{2}$ choke and no choke position.
If engine falters return to $\frac{1}{2}$ choke and repeat.
 5. For final shut down, stop engine by closing fuel shut off valve on gas tank. (When equipped with shut off valve.)
Do not refuel engine at this time.



TO THROW SNOW • • •

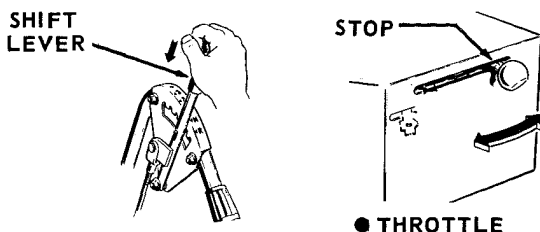
Place throttle lever in run position, pull up on rotor engagement lever to engage rotor, depress clutch lever and place shift lever in desired position. Release clutch lever slowly to avoid jerking.

NOTE: Clutch lever has to be depressed before changing speeds.



TO STOP ENGINE • • •

Place shift lever in the neutral position and slide throttle lever into the stop position, as far as possible.

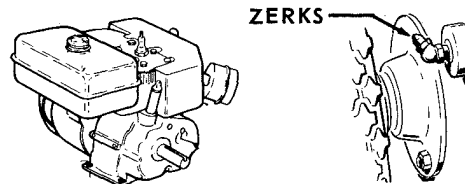


MAINTENANCE and ADJUSTMENT • •

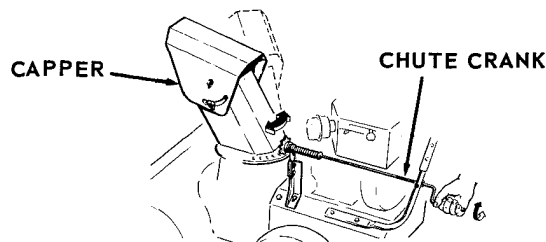
Drain and refill crankcase after the **FIRST** (2) hours of operation. Then drain and refill after each 25 hours of operation.

Check oil in gear box and crankcase each time unit is used.

Grease bearings, (zerks provided) each 10 hours of operation.



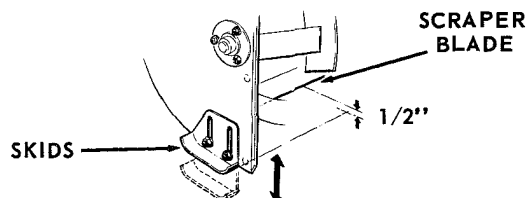
To change direction or distance of throw, turn chute crank accordingly. Move capper up or down, by loosening wing nuts, tighten nuts securely after adjustment.



To adjust clutch see instructions outlined under (Assembling Unit).

TO ADJUST SKIDS — FIRST SHUT OFF ENGINE

FOR USE ON CONCRETE - adjust skids 1/2 inch lower than scraper blade. FOR USE ON GRAVEL - adjust skids one inch lower than scraper blade. NOTE: These adjustments move entire unit up or down.



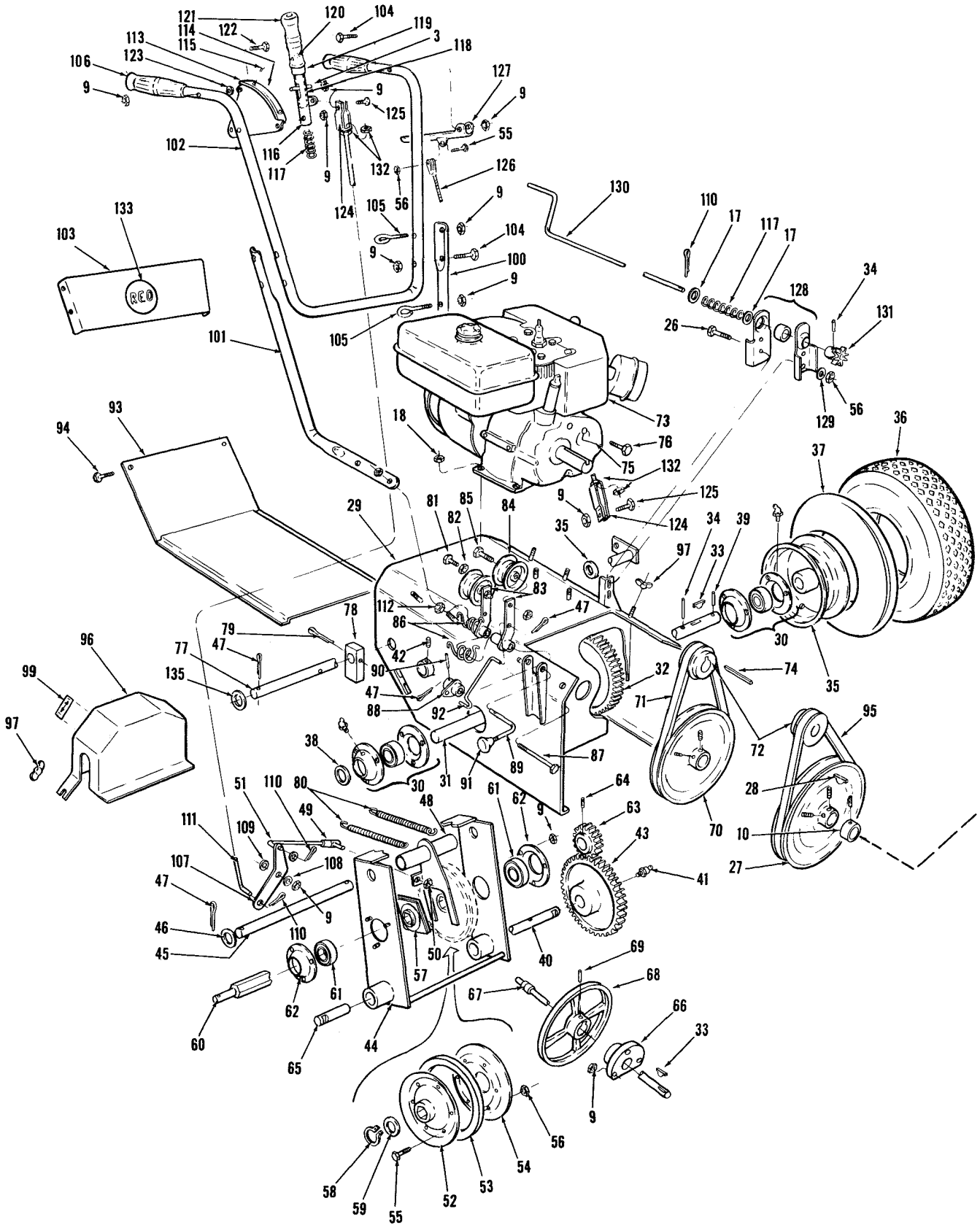
TO ADJUST SCRAPER — FIRST SHUT OFF ENGINE

The blade is adjusted by 5 bolts which hold blade to chassis. Blade is located behind rotor. FOR USE ON CONCRETE - adjust blade 1/2 inch lower than rotor. FOR USE ON GRAVEL - adjust blade to level of rotor.

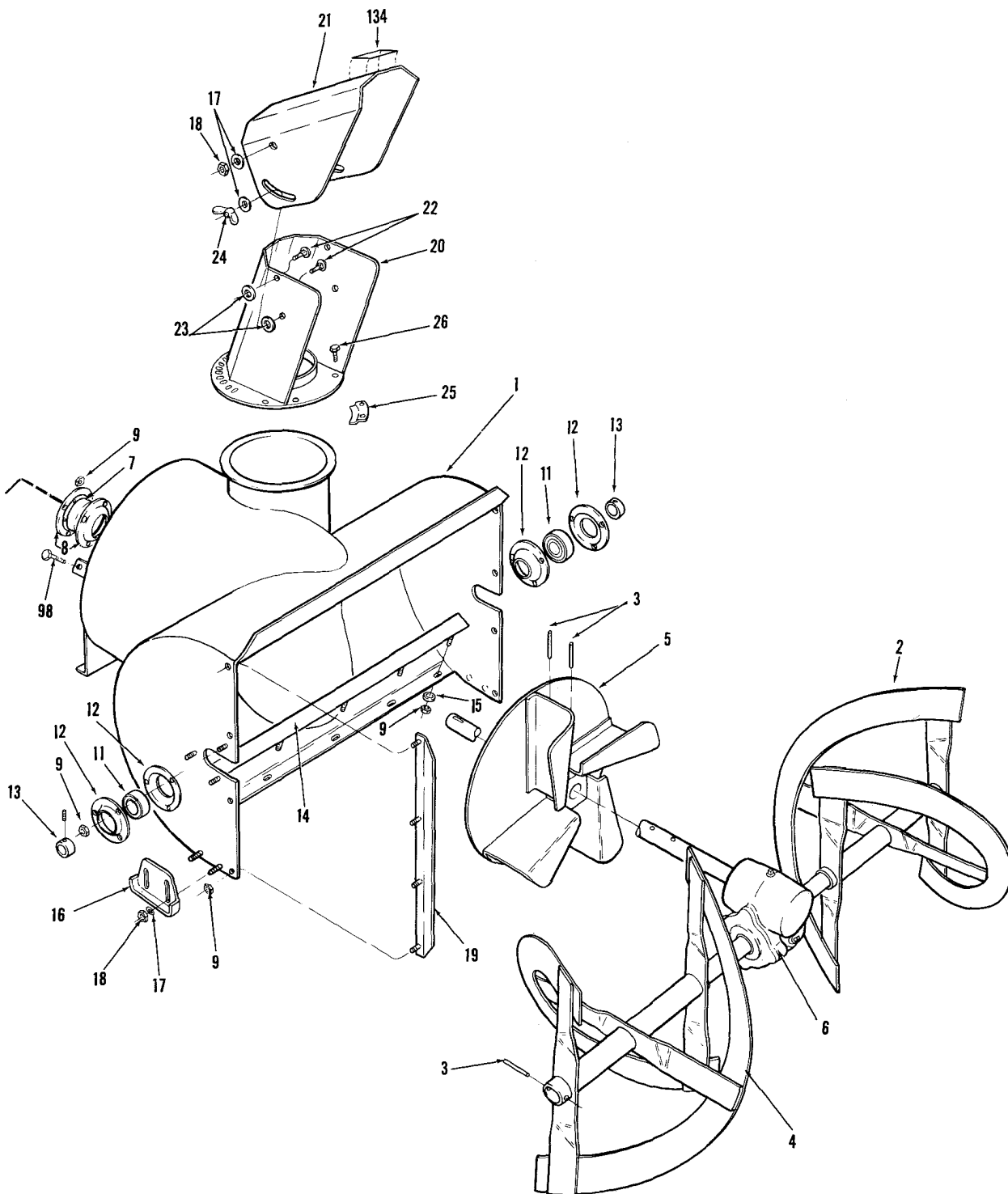
STORING • • •

Drain gas from tank. If the Snow Throw is stored for long periods, remove spark plug, pour in about two tablespoons of Motor Oil, replace spark plug and crank engine a few turns.

REO SNOW THROW



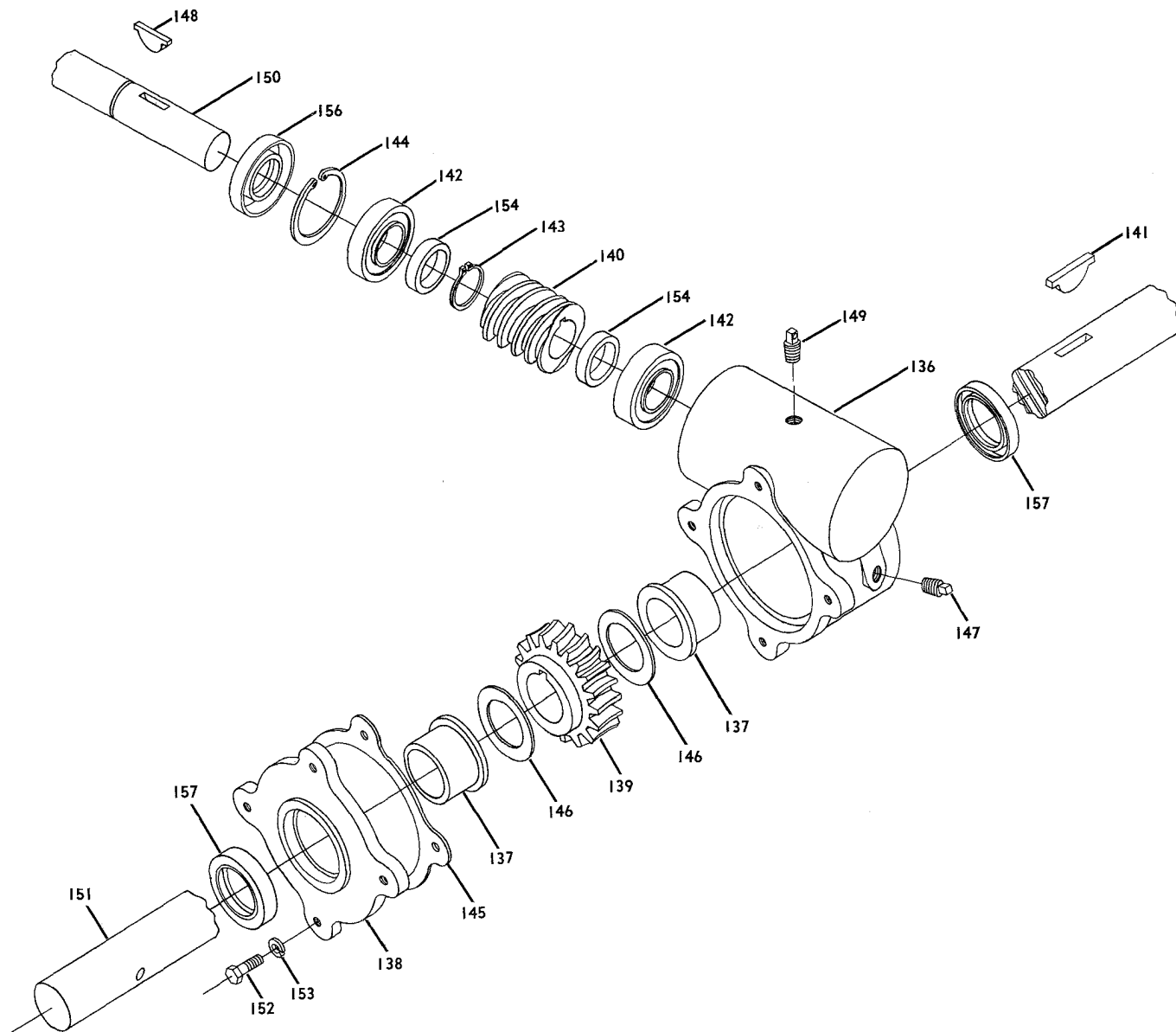
MODELS 626 ST & 626 STE



SNOW THROW MODEL 626 PARTS LIST

Index Numbers are for illustration purposes only. Use part numbers when ordering repair parts.

INDEX NUMBER	PART NUMBER	DESCRIPTION	INDEX NUMBER	PART NUMBER	DESCRIPTION
1	MW-10312	Housing Assembly	68	MW-8930	Disc
2	MW-10433	Rotor L.H.	69	GM-9414525	Roll Pin
3	GM-9409684	Pin	70	MW-10377	Pulley
4	MW-10434	Rotor R.H.	71	MW-10366	Belt
5	MW-10293	Impeller	72	MW-10401	Pulley
6	MW-10313	Gear Box Assembly	73	MW-10553	Engine
7	MW-10396	Bearing	74	MW-10304	Key
8	MW-10302	Flange	75	MW-10385	Belt Retainer
9	MW-8952-5	Nut	76	GM-423560	Screw & Lockwasher
10	MW-10398	Collar	77	MW-10338	Shaft
11	MW-10397	Bearing	78	MW-10337	Lever
12	MW-10303	Flange	79	GM-103409	Cotter Pin
13	MW-10399	Collar	80	MW-10391	Spring
14	MW-10512	Scraper Blade	81	GM-153771	Screw
15	GM-120393	Washer	82	GM-273801	Nut
16	MW-10507	Skid	83	MW-10280	Arm
17	GM-120394	Washer	84	MW-8821	Pulley
18	MW-8952-7	Nut	85	MW-10400	Bolt
19	MW-10310	Extension	86	MW-10292	Spring
20	MW-10340	Chute	87	GM-109443	Bolt
21	MW-10276	Deflector	88	MW-10528	Lever
22	GM-126227	Bolt	89	MW-10530	Handle
23	GM-120396	Washer	90	GM-9409650	Pin
24	MW-10449	Wing Nut	91	MW-7989	Knob
25	MW-10283	Chute Retainer	92	MW-10291	Link
26	MW-120854	Bolt	93	MW-10527	Pan
27	MW-10376	Pulley	94	GM-186491	Bolt
28	MW-4627	Key	95	MW-10367	Belt
29	MW-10275	Transmission Housing	96	MW-10548	Guard
30	MW-10490	Bearing	97	MW-8472	Wing Nut
31	MW-10301	Axle	98	GM-273773	Bolt
32	MW-8940	Gear	99	MW-10545	Decal (Rotor)
33	MW-4628	Key	100	MW-10294	Lower Handle L.H.
34	MW-4240	Roll Pin	101	MW-10295	Lower Handle R.H.
35 thru 37	MW-10322	Wheel Assembly	102	MW-10284	Upper Handle
35	MW-10492	Rim	103	MW-10371	Panel
36	MW-10493	Tire	104	GM-122040	Bolt
37	MW-10494	Tube	105	MW-10556	Eyebolt
38	MW-4311	Washer	106	MW-10374	Grip
39	GM-9409683	Pin	107	MW-8915	Bellcrank
40	MW-10557	Shaft Assembly	108	MW-10482	Spacer
41	GM-9411025	Fitting	109	GM-120393	Washer
42	MW-4263	Set Screw	110	GM-177923	Cotter Pin
43	MW-8939	Gear	111	MW-10388	Control Rod
44 thru 65	MW-10365	Friction Wheel & Support Assy.	112	MW-8953-5	Nut
44	MW-10473	Support	113 thru 121	MW-10535	Shift Control Assembly
45	MW-8900	Shaft	113	MW-10554	Control Bracket
46	MW-4327	Washer	114	MW-10521	Selector Plate
47	GM-121222	Cotter Pin	115	GM-145379	Drive Screw
48	MW-10321	Fork	116	MW-10520	Lever
49	MW-8951-3	Ball Joint	117	MW-10523	Spring
50	MW-8952-6	Nut	118	MW-10489	Shaft
51	MW-8924	Link	119	MW-10488	Handle
52	MW-6896	Disc & Hub	120	GM-9409682	Pin
53	MW-6899	Tire	121	MW-10522	Grip
54	MW-6898	Disc	122	GM-122052	Bolt
55	GM-120854	Bolt	123	MW-4345	Washer
56	MW-8952-3	Nut	124	MW-10592	Clevis
57	MW-6901	Fibre Block	125	GM-122007	Bolt
58	MW-4558	Retaining Ring	126	MW-10560	Cable
59	MW-4344	Washer	127	MW-10386	Handle
60	MW-8899	Shaft	128	MW-10491	Bearing Assembly
61	MW-10686	Bearing	129	GM-120392	Washer
62	MW-6904	Retainer	130	MW-8936	Rod
63	MW-10485	Pinion	131	MW-8935	Sprocket
64	MW-4240	Roll Pin	132	GM-120368	Nut
65	MW-10418	Shaft	133	MW-10532	Decal (Reo)
66	MW-8923	Bearing Support	134	MW-10687	Decal (Caution)
67	MW-10282	Bearing & Shaft Assy.	135	MW-4326	Washer



PARTS LIST FOR ROTOR GEAR BOX ASS'Y.

When ordering parts always list Part No. and name of part.

Index No.	Part Number	Description
136	MW8869	Housing — Rotor Drive
137	MW5332	Bushing
138	MW8870	Cover — Rotor Drive
139	MW8941	Gear — Worm
140	MW8938	Worm
141	937168	Key — Hi - Pro No. HP-808 (1/4 x 1)
142	MW10458	Bearing — Ball
143	MW4555	Ring — Retaining External
144	MW4573	Ring — Retaining Internal
145	5326	Gasket
146	MW10327	Washer — Worm Gear Thrust

Index No.	Part Number	Description
147	GM219188	Plug — Oil Level
148	937159	Key — Hi - Pro No. HP-606 (3/16 - 3/4)
149	MW10440	Plug — Vent
150	MW8895	Shaft — Impeller
151	MW8896	Shaft Rotor
152	908002-4	Bolt — Hex 1/4-20 x 5/8
153	920081-4	Lockwasher 1/4 Dia. SAE
154	MW8894	Spacer — Worm
156	MW10459	Seal — Oil
157	MW10390	Seal — Oil