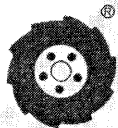


PARTS LIST AND INSTRUCTIONS



Wheel Horse

WHEELHORSE PRODUCTS, INC. • SOUTH BEND, IND.

ROTARY MOWER

RM-364

ASSEMBLY

Remove mower from box. Mount the wheels part 2877 using shoulder bolts part 4177. Four holes are provided on each side of the deck, the height of cut is determined by the holes you select. Secure with $\frac{3}{8}$ -16 Nylock nuts part 915113-6.

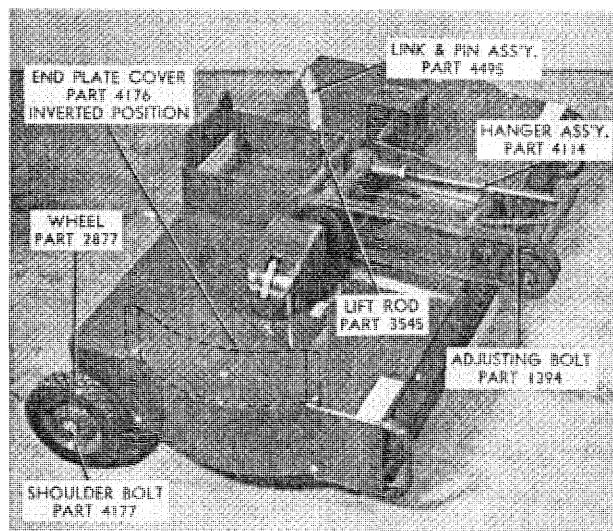
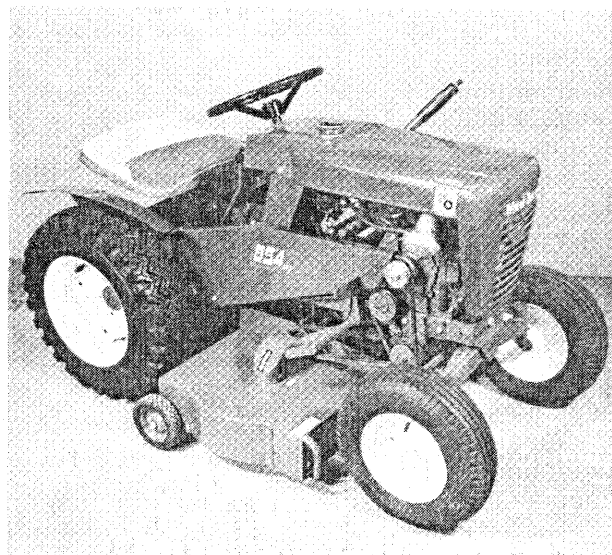
Mount the right hand plate Ass'y. & Pin part 4494 to the R.H. frame rail using **Round Head Bolt** $\frac{3}{8}$ -16 x 1, part 909086-4, thru the rear plate hole into fourth hole in the frame. Use hex. head bolt $\frac{3}{8}$ -16 x 1 part 908034-4 through front plate hole and second hole of right frame rail. Secure with $\frac{3}{8}$ -16 Nylock nuts part 915113-6. Mount the idler arm Ass'y part 4110 (pulley part No. 1618 is part of this Ass'y.) on the pin of right hand plate Ass'y. & secure with hair pin cotter part No. S-52-4. **Caution:** Make sure the bent portion of the hairpin is on top of the pin. This will prevent the bent portion from damaging the belt when the mower is in the fully raised position. Fasten link from tractor attachment clutch pedal to idler arm Ass'y. pin and secure with hair pin cotter part S-52-4.

Mount left hand plate part 4497 to the L.H. frame rail after inserting latch and shaft Ass'y. part 4490 (with cut out towards rear), in holes provided. Secure left hand plate to frame using two Hex. head bolts $\frac{3}{8}$ -16 x 1, part 908034-4 through plate and second and fourth holes in the frame. Secure with $\frac{3}{8}$ -16 Nylock nuts, part 915113-6.

Slide mower under tractor and lift hanger Ass'y. part 4114 into slots of plates and close the latch. Secure latch in closed position using hair pin cotter part S-52-12 through hole in L.H. plate. **Note:** There are two holes in this plate for the hair pin cotter. One locks the latch in place; the other hole is used to hold the latch up when the mower is removed.

Push clutch pedal forward to the de-clutched position. Install drive belt, part 1577 on the inner groove of the engine pulley, over the idler, part 1618, and onto the mower pulley part 1625. Operate the clutch and check to see that the pulleys are in line.

With the lift lever in the lowered position, install link Ass'y. part 4495, into end hole of lift from left side. Secure with hair pin cotter, part S-52-4. Insert rod, part 3545 into link Ass'y. from the left and secure with hair pin part S-52-4. Adjust $\frac{3}{8}$ -16 Nylock nut on rod so that mower is tight against frame when lift lever is in the up position.



OPERATION

1. The height of cut is adjusted by moving the wheels up or down and by adjusting the single front adjusting bolt, part 1394. The front of the mower should be tilted forward slightly (approximately $\frac{1}{4}$ ") so the blades will not double cut.

2. The single belt is automatically tightened to the proper tension with the tension spring. However, the double belts may be taken up, when necessary, by loosening the two nuts on the hangers (4114) and turning them out to take up the belts. It is not necessary to make these belts very tight. It is very important that both hangers be taken up the same. If they are not, one belt will be over-loaded and not run true on the pulley. Tighten nuts after adjustment.

3. Never stand on mower when it is in the up position (the extra weight could result in damage to the hangers).

4. When blades become dull, remove and regrind. **CAUTION:** Sharpen evenly on both sides so blade does not become out of balance.

5. The mower has side plates which may be removed when cutting heavy grass or weeds. The sideplates may be reinstalled in an inverted position, as shown in the dotted illustration, thus acting as an additional foot guard. **EXTREME CAUTION** should be exercised when the sideplates are removed, because of the danger of flying debris.

6. The mower is also equipped with a front guard which is adjustable up and down. The guard must be adjusted to the highest position when cutting heavy grass or weeds.

CAUTION: If this guard is removed, be sure and keep engine air screen clean to prevent overheating of engine.

LUBRICATION

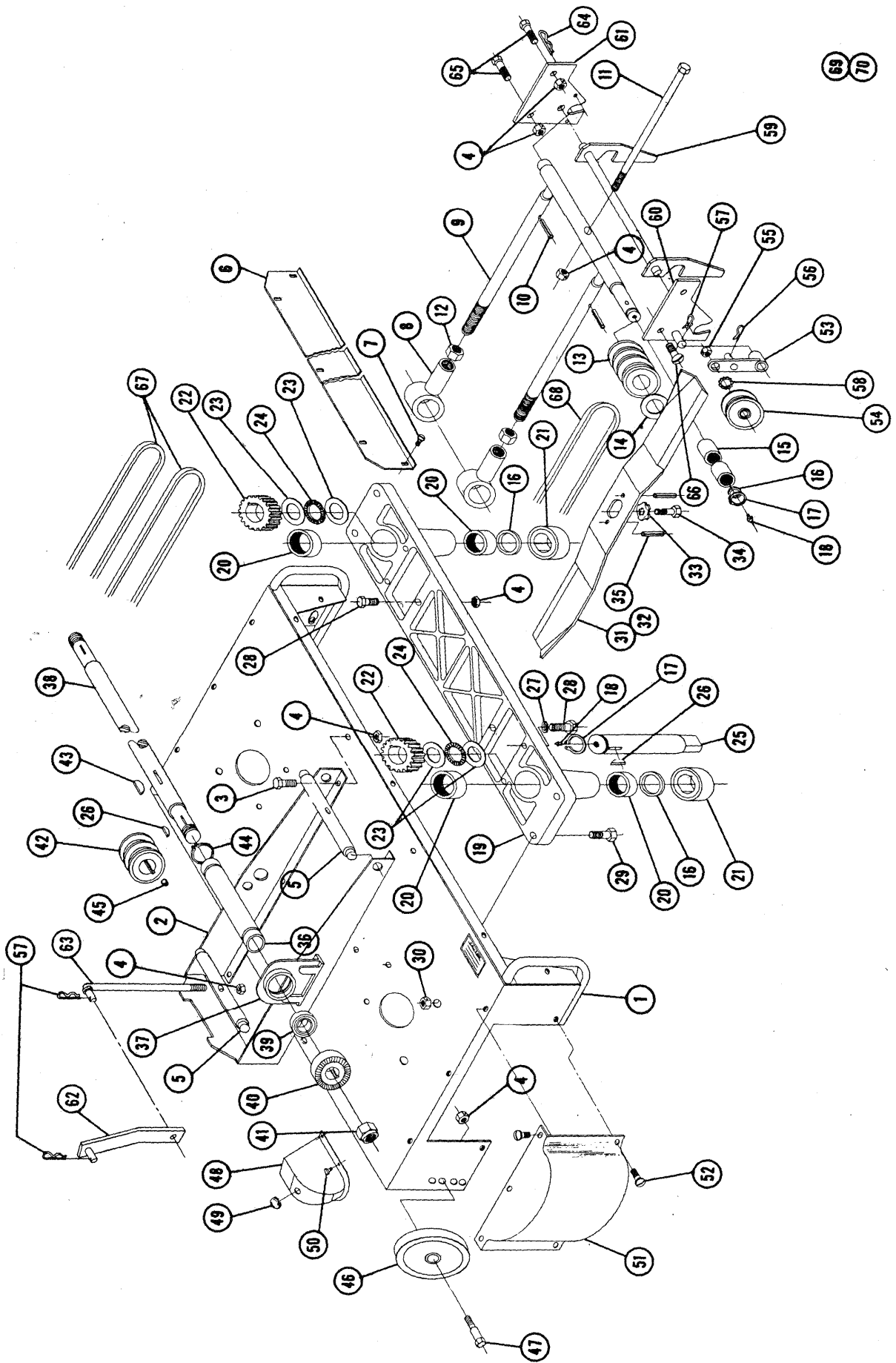
The mower was greased at the factory but should be greased again before operating, and after every 10 hours of use. There are 3 fittings: one under each gear cover, which may be reached through the holes provided. (**Caution:** Excessive pressure will force grease seals from the bottom of the shafts), and one on the end of the hanger shaft. All other bearings and moving parts should be oiled frequently with a light grade of machine oil.

Before mowing, the mower should be operated at a slow speed to check all moving parts for any damage or looseness caused in transporting.

PARTS LIST

When ordering parts always list Part No. and name of part.

| Item No. | Part No. | Description | No. Req'd. | Ref. No. | Part No. | Description | No. Req'd. |
|----------|----------|---|------------|----------|----------|--|------------|
| 1 | 4186 | Ass'y. Deck 36" | 1 | 36 | 4113 | Tube — Pivot | 1 |
| 2 | 4124 | Ass'y. Bracket — MTG. | 1 | 37 | 3138 | Housing — Bearing | 2 |
| 3 | 908032-4 | Bolt — Hex $\frac{3}{8}$ -16 x $\frac{3}{4}$ | 4 | 38 | 4112 | Shaft 36" | 1 |
| 4 | 915113-6 | Nut — Nylock $\frac{3}{8}$ -16 | 14 | 39 | 1515 | Bearing — Ball | 2 |
| 5 | 4118 | Shaft — Lift Pivot | 2 | 40 | 3130 | Gear — Face | 2 |
| 6 | 2632 | Guard — Grass Shield | 1 | 41 | 915639-4 | Nut Elastic Stop $\frac{5}{8}$ -18 | 2 |
| 7 | 1385 | Screw — Sems $\frac{1}{4}$ -20 x $\frac{1}{2}$ | 5 | 42 | 1624 | Pulley | 1 |
| 8 | 4115 | Rod End | 2 | 43 | 937014 | Key #9 Woodruff | 1 |
| 9 | 4114 | Ass'y. Hanger | 1 | 44 | S-50-112 | Snap Ring $1\frac{1}{8}$ Shaft | 2 |
| 10 | 933160 | Roll Pin $\frac{1}{8}$ x $1\frac{1}{2}$ | 2 | 45 | 909862 | Set Screw $\frac{3}{16}$ -18 x $\frac{5}{16}$ | 1 |
| 11 | 1394 | Bolt — Hex $\frac{3}{8}$ -16 x 8 | 1 | 46 | 2877 | Wheel | 2 |
| 12 | 915089-4 | Nut — Hex Jam $\frac{3}{8}$ -18 | 2 | 47 | 4177 | Bolt — Shoulder | 2 |
| 13 | 1625 | Pulley | 1 | 48 | 3141 | Cover — Gear | 2 |
| 14 | 1278 | Washer $\frac{3}{4}$ x $1\frac{1}{4}$ x .050 | 1 | 49 | 3757 | Plug — Button | 2 |
| 15 | 1540 | Bearing — Needle | 2 | 50 | 1304 | Screw #8-32 Self Tapping | 8 |
| 16 | 1303 | Seal — Oil $\frac{3}{4}$ Shaft | 4 | 51 | 4176 | Cover — End Plate | 2 |
| 17 | S-50-75 | Snap Ring $\frac{3}{4}$ Shaft | 3 | 52 | 1391 | Screw — Sems $\frac{1}{4}$ -20 x $\frac{3}{8}$ | 10 |
| 18 | 1030 | Fitting — Grease | 3 | 53 | 4110 | Ass'y. Idler Arm | 1 |
| 19 | 4102 | Housing | 1 | 54 | 1618 | Ass'y. Idler Pulley & Shaft | 1 |
| 20 | 1508 | Bearing Needle | 4 | 55 | 915004-6 | Nut — Nylock $\frac{1}{2}$ -20 | 1 |
| 21 | 3716 | Cup — Spindle | 2 | 56 | S-52-3 | Hairpin | 1 |
| 22 | 3131 | Gear — Spur | 2 | 57 | S-52-4 | Hairpin | 3 |
| 23 | 1535 | Race — Thrust Bearing | 4 | 58 | 920126-4 | Washer $\frac{1}{2}$ Dia. Ext. Tooth | 1 |
| 24 | 1534 | Bearing — Thrust | 2 | 59 | 4490 | Ass'y. Latch & Shaft | 1 |
| 25 | 4120 | Spindle — Blade | 2 | 60 | 4494 | Ass'y. Plate & Pin R.H. | 1 |
| 26 | 937009 | Key #5 Woodruff | 4 | 61 | 4497 | Plate — Mtg. L.H. | 1 |
| 27 | 920083-4 | Lock Washer $\frac{3}{8}$ Dia. | 4 | 62 | 4495 | Ass'y. Link & Pin | 1 |
| 28 | 908035-4 | Bolt — Hex $\frac{3}{8}$ -16 x $1\frac{1}{4}$ | 6 | 63 | 3545 | Rod — Lift | 1 |
| 29 | 908019-4 | Bolt — Nylock $\frac{3}{8}$ -18 x 1 | 4 | 64 | S-52-12 | Hairpin | 1 |
| 30 | 915112-6 | Nut — Nylock $\frac{3}{8}$ -18 | 4 | 65 | 908034-4 | Bolt — Hex $\frac{3}{8}$ -16 x 1 | 3 |
| 31 | 4116 | Blade — R.H. 18" | 1 | 66 | 908086-4 | Bolt — Rd. Hd. $\frac{3}{8}$ -16 x 1 | 1 |
| 32 | 4117 | Blade — L.H. 18" | 1 | 67 | 1578 | "V" Belt 37" | 2 |
| 33 | 1336 | Washer — Dome | 2 | 68 | 1577 | "V" Belt 37" | 1 |
| 34 | 908033-6 | Bolt — Nylock $\frac{3}{8}$ -16 x $\frac{3}{8}$ Hex | 2 | 69 | 3710 | Decal — Grease | 2 |
| 35 | 933211 | Roll Pin $\frac{1}{4}$ x $\frac{3}{4}$ | 4 | 70 | 4148 | Decal — Caution | 2 |



Wheel Horse Service Bulletins 1961 - 1990: **#57** Issued: December 14, 1964

Rotary Mowers - Harder Woodruff Keys

[Previous](#) [Table of Contents](#) [Next](#)

TO OUR DEALERS & DISTRIBUTORS

Our 1965 model rotary mowers (RM-324, RM-364, and the Ranger mowers) are being assembled with hardened woodruff keys (Part No. 937084) under the Part No. 3130 Face Gears and the Part No. 3131 Spur Gears. The hardened keys have greater shear strength, thus minimizing service calls and twin housing breakage. For easy identification, the hardened key is black in color.

The Part No. 937084 Woodruff Key (hardened) should be utilized in the repair of all gear-driven Wheel Horse rotary mower attachments, both current production and previous models. Be sure you have genuine Wheel Horse replacement keys in stock, as they are manufactured to proper specifications.

We recommend that you return your present stock of Part No. 937009 Keys (soft) to your distributor for consolidated shipment to the factory and place your order for your hardened key requirements. At present, the soft keys are used in no other location.

Jack D. Walton

Service Manager

JDW:jr

Wheel Horse Service Bulletins 1961 - 1990: **#99a** Issued: April 1980

Blade Kits for 1961-68 36" Mowers

[Previous](#) [Table of Contents](#) [Next](#)

THIS BULLETIN SUPERCEDES SERVICE BULLETIN 99 ISSUED MAY, 1968

To All Dealers:

1. Topic:

1.1 One of two blade kits must be selected when replacing P/N 4116 and 4117 mower blades, used as original equipment on 1961 through 1968 36" mowers.

2. Service Action:

2.1 Order Mower Blade Kit P/N 101522 for the 1961 model RMR-3661 mower.*

2.2 Order Mower Blade Kit P/N 8014 for the following 1962-68 36" mower models:

RMR-3662

RM- 363

RM- 364

RM- 366

RL- 366

RM- 367

RL- 367

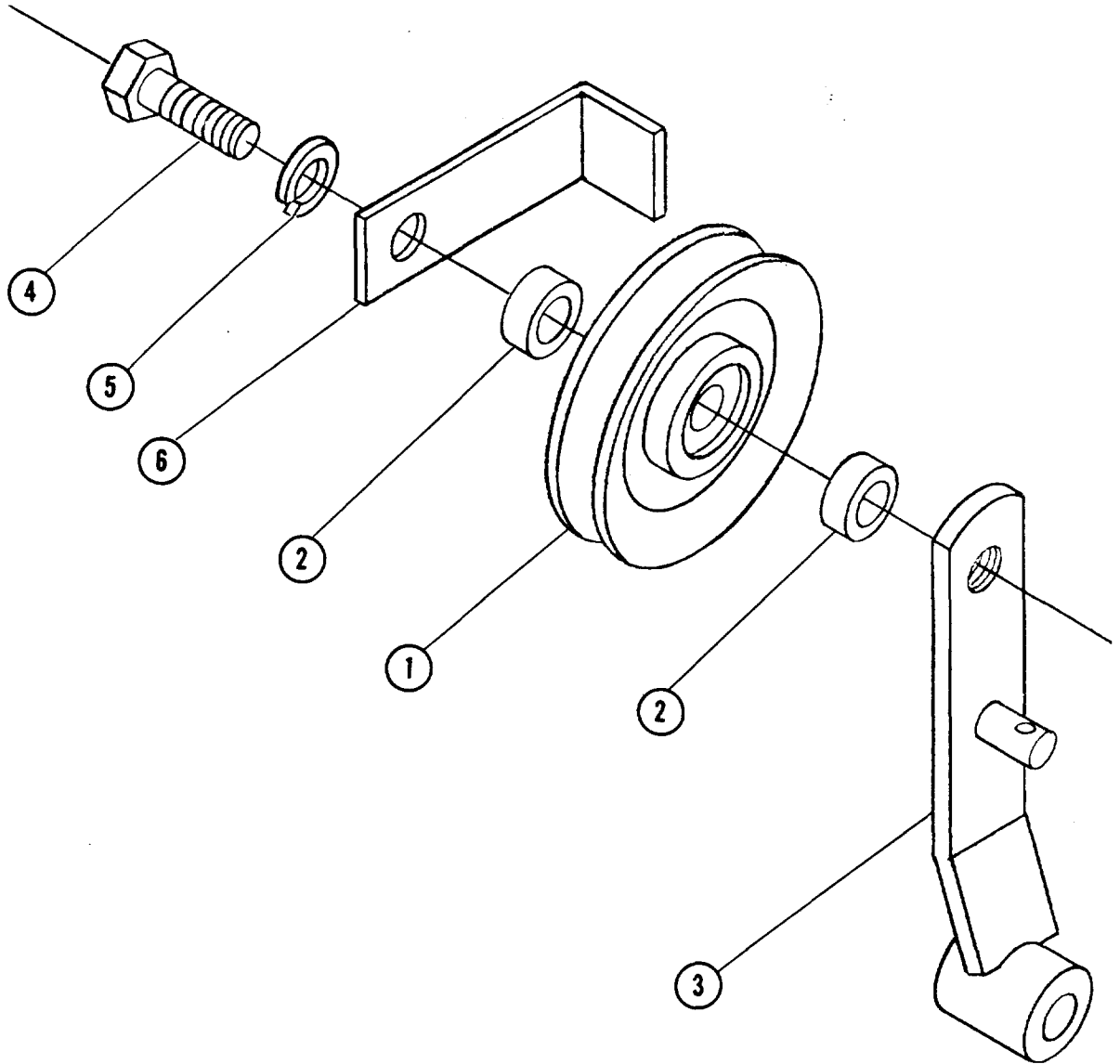
5-1361

5-2361

* When present stock of P/N 101522 is exhausted, P/N 8014 blade kit will be substituted. This kit contains P/N 7906 & 7907 mower blades. To use these longer blades on the RMR-3661, grind 1/8" from each end of each blade and balance them before installation.



KIT 6051



This 6051 idler bracket is for use on 1045 tractor only when mounting a RM-364 mower or SMS-42A sickle bar. The idler bracket which are furnished with these attachments will not work on 1045 tractor.

PARTS LIST

| Ref. No. | Part No. | Description | No. Req'd. |
|----------|----------|--|------------|
| 1 | 1623 | Pulley - Idler | 1 |
| 2 | 1536 | Bushing | 2 |
| 3 | 5443 | Ass'y. Bracket - Idler | 1 |
| 4 | 908035-4 | Bolt - Hex. $\frac{3}{8}$ -16 x $1\frac{1}{4}$ | 1 |
| 5 | 920083-4 | Lockwasher | 1 |
| 6 | 2291 | Bracket - Belt Stop | 1 |