

PARTS LIST AND INSTRUCTIONS



Wheel Horse

WHEELHORSE PRODUCTS, INC. • SOUTH BEND, IND.

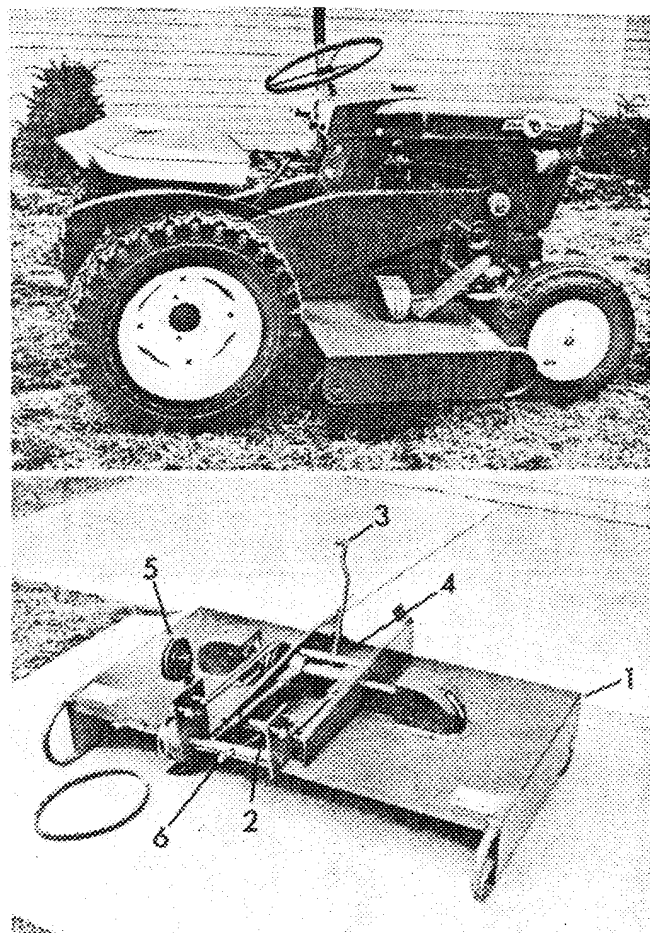
ROTARY MOWER RMR 3661

ASSEMBLY

1. Remove mower from box and mount the two wheels in the second hole. Using spacers and $\frac{3}{4}$ " bolts. It will be necessary to move wheels up or down depending on the desired cut.
2. Slide mower under tractor and mount the two hangers to the second and fourth hole of the tractor frame.
3. Move tractor lift lever forward and hook lift link to the outer hole of lift arm, locking with hair pin cotter.
4. Raise mower and adjust the lock nut on the lift link so mower is tight against tractor angle when all the way up.
5. Mount the idler arm assembly to the right hand hanger bracket using hair pin cotter. Hook clutch foot pedal to idler arm and push clutch forward. Slide belt over engine pulley and mower pulley checking to make sure pulleys are perfectly in line. Release foot clutch pedal and check for alignment. Tightness of belt is automatic through tension spring.
6. Leveling screw (1370) can now be adjusted for proper cutting angle at the front of mower.

OPERATION

1. Height adjustment is done by two simple adjustments in the rear, by moving wheels up or down, and in the front by the single adjusting bolt. The front of the mower should be tilted forward slightly so blades will not double cut. (Approximately $\frac{1}{4}$ ")
2. The single belt take-up is automatically done with a tension spring. However, the double belts may be taken up when necessary, by loosening the two nuts on the leveling links and turning them out to take up the belt. It is not necessary to make these belts very tight. It is very important that both links be taken up the same. If they are not, one belt will be over-loaded and not run true on the pulley. Tighten nuts after adjustment.
3. Never stand on mower when in the up position so as not to cause any damage to the links.
4. When blades are no longer sharp, remove and regrind. Caution should be taken so blade does not become out of balance.



5. The mower has side plates which may be removed when cutting heavy wet material. **Extreme caution** should be taken in the event of flying debris.

LUBRICATION

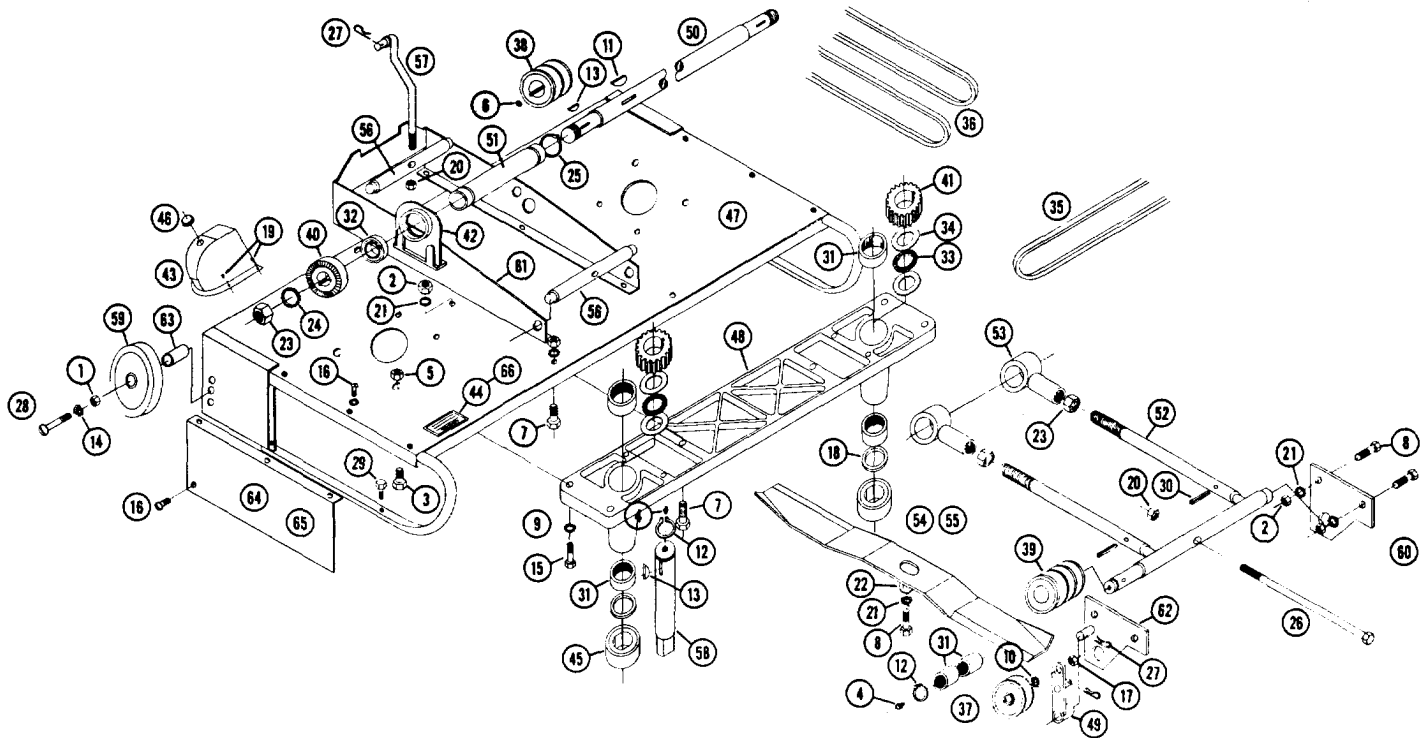
The mower is greased at the factory, but should be greased again before operating and every 10 hours of use. There are (3) fittings: One under each gear cover which may be reached through the hole provided; One on the end of the counter shaft. Apply oil on all moving links.

The mower was run at the factory before shipment. Before operating, the mower should be run at a slow speed to check all moving parts for any looseness caused in transporting.

PARTS LIST

Ref. No.	Part No.	Description	No. Req'd.
1	1007	Hex Nut $\frac{5}{16}$ -18	2
2	1016	Hex Nut $\frac{3}{8}$ -16	10
3	1028	H. H. C. S. $\frac{3}{8}$ -16 x $1\frac{1}{4}$	4
4	1030	Grease Fitting $\frac{1}{4}$ -28	3
5	1034	Hex Nut $\frac{1}{4}$ -20	4
6	1042	Socket Hd. Set Screw $\frac{5}{16}$ -18 x $\frac{5}{16}$	1
7	1061	Hex Hd. Cap Screw $\frac{3}{8}$ -16 x $\frac{3}{4}$	6
8	1062	Hex Hd. Cap Screw $\frac{3}{8}$ -16 x 1	6
9	1067	Shakeproof Washer $\frac{1}{4}$	4
10	1118	Shakeproof Washer $\frac{1}{2}$	1
11	1122	Woodruff Key #9	1
12	1127	Snap Ring $\frac{3}{4}$	3
13	1194	Woodruff Key #5	4
14	1196	Shakeproof Washer $\frac{5}{16}$	2
15	1221	Hex Hd. Cap Screw $\frac{1}{4}$ -20 x 1	4
16	1271	Round Head Machine Screw $\frac{1}{4}$ -20 x $\frac{3}{8}$	8
17	1302	Hex Jam Nut $\frac{1}{4}$ -20	1
18	1303	Oil Seal $\frac{3}{4}$ I.D. x $\frac{1}{8}$ Thk.	4
19	1304	Self Tapping Screw 8-32 x $\frac{1}{4}$	8
20	1310	Nylock Nut $\frac{3}{8}$ -16	2
21	1332	Shakeproof Washer $\frac{3}{8}$ External	16
22	1336	Washer—Flat Spec.	2
23	1343	Jam Nut—Hex $\frac{3}{8}$ -18	4
24	1354	Shakeproof Washer $\frac{5}{16}$	2
25	1356	Snap Ring $1\frac{1}{16}$	2
26	1370	Machine Bolt $\frac{3}{8}$ -16 x $7\frac{1}{2}$	1
27	1372	Hair Pin Cotter .056 x $\frac{3}{32}$	3
28	1373	Rd. Hd. Mach. Screw $\frac{5}{16}$ -18 x 2	2
29	1374	Hex Hd. Cap Screw $\frac{1}{4}$ -20 x $\frac{3}{8}$	2
30	1376	Roll Pin $\frac{1}{8}$ x $1\frac{1}{2}$	2
31	1508	Needle Bearing	6
32	1515	Ball Bearing	2
33	1534	Thrust Bearing	2

Ref. No.	Part No.	Description	No. Req'd.
34	1535	Thrust Washer $\frac{3}{4}$	4
35	1577	"V" Belt 28"	1
36	1578	"V" Belt 37"	2
37	1618	Idler Pulley	1
38	1624	Pulley $3\frac{1}{2}$ O.D.	1
39	1625	Pulley 3 O.D.	1
40	3130	Face Gear	2
41	3131	Spur Gear	2
42	3138	Bearing Housing	2
43	3141	Gear Cover	2
44	3710	Decal—Grease	2
45	3716	Cup—Vertical Spindle	2
46	3757	Plug—Steel Spring	2
47	4101	Deck	1
48	4102	Twin Housing	1
49	4110	Idler Arm	1
50	4112	Cross Shaft	1
51	4113	Pivot Tube	1
52	4114	Hanger	1
53	4115	End—Hanger Rod	2
54	4116	Blade R. H. 18"	1
55	4117	Blade L. H. 18"	1
56	4118	Bar—Pivot Lift	2
57	4119	Lift Rod	1
58	4120	Spindle	2
59	4121	Wheel 6" Dia.	2
60	4123	Mounting Block L. H.	1
61	4124	Mounting Bracket	1
62	4127	Mounting Block R.H.	1
63	4131	Wheel Spacer	2
64	4140	Door R. H.	1
65	4141	Door L. H.	1
66	4148	Decal (Caution)	1



Wheel Horse Service Bulletins 1961 - 1990: **#21** Issued: March 1961

Facts About the New 1961 Rotary Mowers.

[Previous](#) [Table of Contents](#) [Next](#)

TO ALL DISTRIBUTORS AND DEALERS

1. RMR3261.32" Rotary Mower for Models 401, 551, ST400 and ST550 tractors.

A. Use of Counter Balance Spring, Part #1129.

a. This spring is to be used to enable the mower to easily float on rough ground.

b. Under Normal Conditions Part #1129 can be eliminated.

B. Windmilling in down position when clutch is disengaged.

a. It is necessary to raise the mower to the Travel or Up position to eliminate windmilling.

b. All belts are made with a plus or minus 1/8" tolerance. After useage a marked difference will be noticed in the clutching effectiveness.

2. RMR3661 36" Rotary Mower for Model 701 Tractor.

A. Adjustment of Part #4112 (2) Hangers.

a. Release Part #1343 (2) Jam Nuts and turn Part #4114 (2) Hangers to tighten or loosen Part #1578 twin belts. Part #4114 (2) also controls the entire mower assembly with regard to positioning beneath the tractor frame. If not properly squared mower will jam against the tractor belt guard, Part #4202. It is important these adjustments be made at time of installation.

PARTS & SERVICE DEPARTMENT

WHEEL HORSE PRODUCTS, INC.

JW:md

Wheel Horse Service Bulletins 1961 - 1990: **#99a** Issued: April 1980

Blade Kits for 1961-68 36" Mowers

[Previous](#) [Table of Contents](#) [Next](#)

THIS BULLETIN SUPERCEDES SERVICE BULLETIN 99 ISSUED MAY, 1968

To All Dealers:

1. Topic:

1.1 One of two blade kits must be selected when replacing P/N 4116 and 4117 mower blades, used as original equipment on 1961 through 1968 36" mowers.

2. Service Action:

2.1 Order Mower Blade Kit P/N 101522 for the 1961 model RMR-3661 mower.*

2.2 Order Mower Blade Kit P/N 8014 for the following 1962-68 36" mower models:

RMR-3662

RM- 363

RM- 364

RM- 366

RL- 366

RM- 367

RL- 367

5-1361

5-2361

* When present stock of P/N 101522 is exhausted, P/N 8014 blade kit will be substituted. This kit contains P/N 7906 & 7907 mower blades. To use these longer blades on the RMR-3661, grind 1/8" from each end of each blade and balance them before installation.