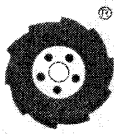


## PARTS LIST AND INSTRUCTIONS



*Wheel Horse*

WHEELHORSE PRODUCTS, INC. • SOUTH BEND, IND.

## ROTARY MOWER

# RM-324

### ASSEMBLY

Remove mower from box. Mount the wheels part 2877 using shoulder bolts part 4177. Three holes are provided on each side of the deck, the height of cut is determined by the holes you select. Secure with  $\frac{3}{8}$ -16 Nylock nuts part 915113-6.

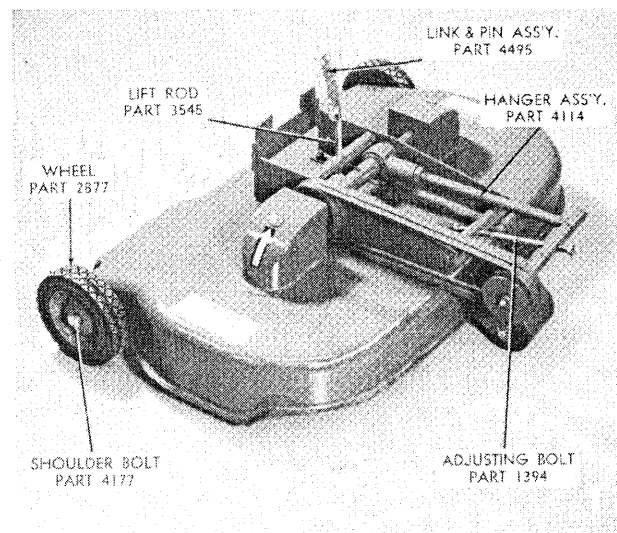
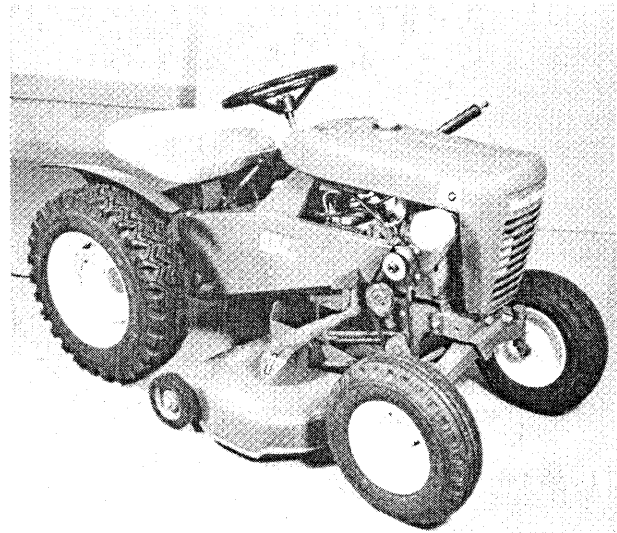
Mount the right hand plate Ass'y. & Pin part 4494 to the R.H. frame rail using **Round Head Bolt**  $\frac{3}{8}$ -16 x 1, part 908086-4, thru the rear plate hole into fourth hole in the frame. Use hex. head bolt  $\frac{3}{8}$ -16 x 1 part 908034-4 through front plate hole and second hole of right frame rail. Secure with  $\frac{3}{8}$ -16 Nylock nuts part 915113-6. Mount the idler arm Ass'y part 4110 (pulley part No. 1618 is part of this Ass'y.) on the pin of right hand plate Ass'y. & secure with hair pin cotter part No. S-52-4. **Caution:** Make sure the bent portion of the hairpin is on top of the pin. This will prevent the bent portion from damaging the belt when the mower is in the fully raised position. Fasten link from tractor attachment clutch pedal to idler arm Ass'y. pin and secure with hair pin cotter part S-52-3.

Mount left hand plate part 4497 to the L.H. frame rail after inserting latch and shaft Ass'y. part 4490 (with cut out towards rear), in holes provided. Secure left hand plate to frame using two Hex. head bolts  $\frac{3}{8}$ -16 x 1, part 908034-4 through plate and second and fourth holes in the frame. Secure with  $\frac{3}{8}$ -16 Nylock nuts, part 915113-6.

Slide mower under tractor and lift hanger Ass'y. part 4114 into slots of plates and close the latch. Secure latch in closed position using hair pin cotter part S-52-12 through hole in L.H. plate. **Note:** There are two holes in this plate for the hair pin cotter. One locks the latch in place; the other hole is used to hold the latch up when the mower is removed.

Push clutch pedal forward to the de-clutched position. Install drive belt, part 1577 on the inner groove of the engine pulley, over the idler, part 1618, and onto the mower pulley part 1625. Operate the clutch and check to see that the pulleys are in line.

With the lift lever in the lowered position, install link Ass'y. part 4495, into end hole of lift from left side. Secure with hair pin cotter, part S-52-4. Insert rod, part 3545 into link Ass'y. from the left and secure with hair pin part S-52-4. Adjust  $\frac{3}{8}$ -16 Nylock nut on rod so that mower is tight against frame when lift lever is in the up position.



### OPERATION

1. The height of cut is adjusted by moving the wheels up or down and by adjusting the single front adjusting bolt, part 1394. The front of the mower should be tilted forward slightly (approximately  $\frac{1}{4}$ "') so the blades will not double cut.

2. The single belt is automatically tightened to the proper tension with the tension spring. However, the double belts may be taken up, when necessary, by loosening the two nuts on the hangers (4114) and turning them out to take up the belts. It is not necessary to make these belts very tight. It is very important that both hangers be taken up the same. If they are not, one belt will be over-loaded and not run true on the pulley. Tighten nuts after adjustment.

3. Never stand on mower when it is in the up position (the extra weight could result in damage to the hangers).

4. When blades become dull, remove and regrind.

**CAUTION:** Sharpen evenly on both sides so blade does not become out of balance.

**CAUTION:** Keep engine air screen clean to prevent overheating of engine.

## LUBRICATION

The mower was greased at the factory but should be greased again before operating, and after every 10 hours of use. There are 3 fittings: one under each gear cover, which may be reached through the holes provided. (**Caution:** Excessive pressure will force grease seals from the bottom of the shafts), and one on the end of the hanger shaft. All other bearings and moving parts should be oiled frequently with a light grade of machine oil.

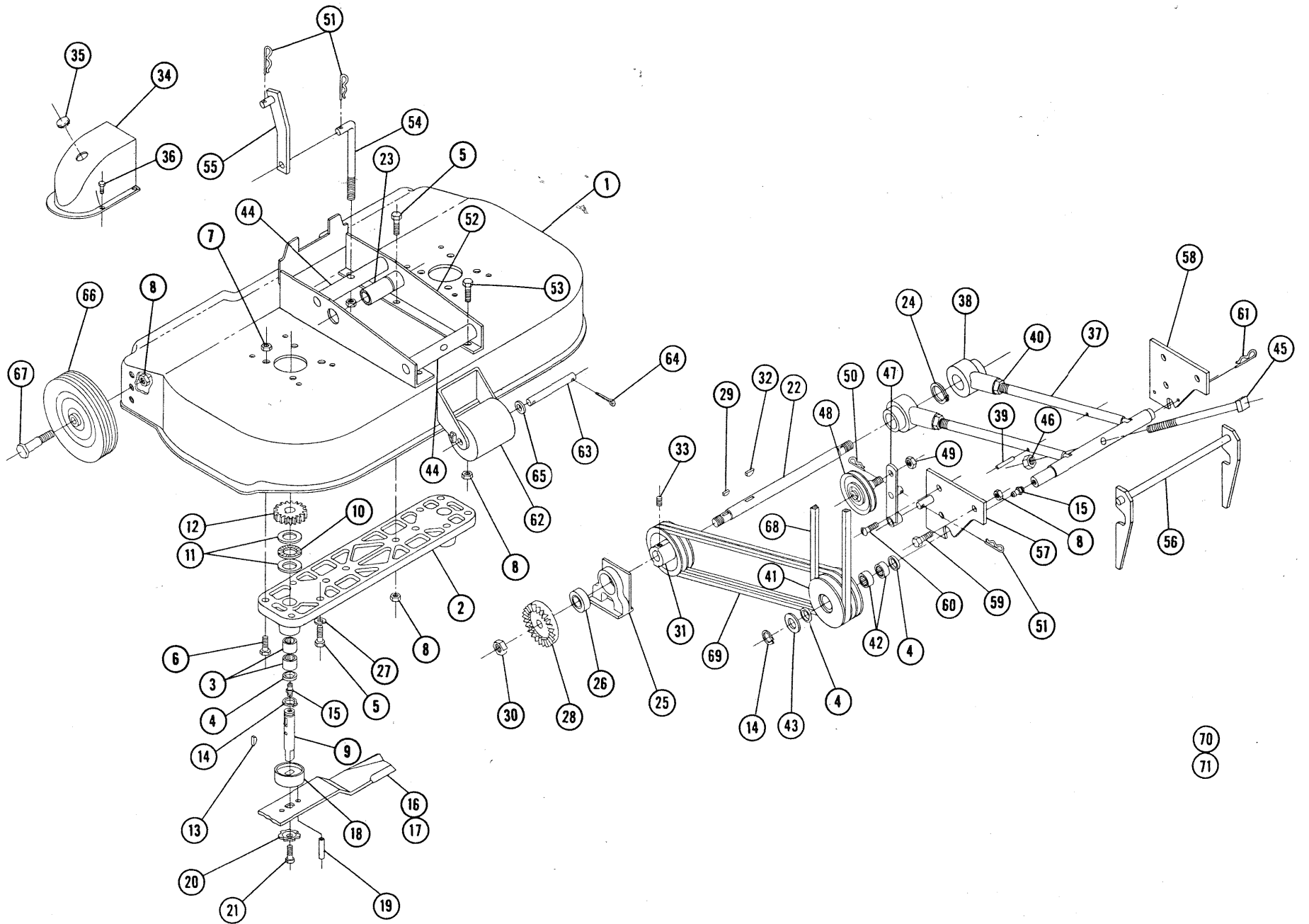
Before mowing, the mower should be operated at a slow speed to check all moving parts for any damage or looseness caused in transporting.

## PARTS LIST

When ordering parts always list Part No. and name of part.

Ref. No.	Part No.	Description	No. Req'd.	Ref. No.	Part No.	Description	No. Req'd.
1	5231	Ass'y. Deck	1	37	4114	Ass'y. Hanger	1
2	5233	Housing	1	38	4115	Rod End	2
3	1508	Bearing	4	39	933160	Roll Pin $\frac{1}{8}$ x $1\frac{1}{2}$	2
4	1303	Seal — Oil	4	40	915089-4	Nut Hex — Jam $\frac{5}{8}$ -18	2
5	908035-4	Bolt — Hex $\frac{3}{8}$ -16 x $1\frac{1}{4}$	6	41	1625	Pulley	1
6	908017-4	Bolt — Hex $\frac{5}{16}$ -18 x $\frac{3}{4}$	4	42	1540	Bearing — Needle	2
7	915112-6	Nut — Nylock $\frac{5}{16}$ -18	4	43	1278	Washer $\frac{3}{4}$ ID x .050	1
8	915113-6	Nut — Nylock $\frac{3}{8}$ -16	12	44	4118	Shaft — Lift Pivot	2
9	3724	Shaft — Spindle	2	45	1394	Bolt — Hex $\frac{3}{8}$ -16 x 8	1
10	1534	Bearing — Thrust	2	46	915605-4	Nut $\frac{3}{8}$ -16 Elastic Stop	2
11	1535	Washer — Thrust	4	47	4110	Ass'y. Idler Arm	1
12	3131	Gear — Spur	2	48	1618	Ass'y. Idler Pulley & Shaft	1
13	937084	Key #5 Woodruff	2	49	915004-6	Nut — Nylock $\frac{1}{2}$ -20	1
14	S-50-75	Snap Ring $\frac{3}{4}$ Shaft	3	50	S-52-3	Hair Pin — Cotter	1
15	1030	Fitting — Grease	3	51	S-52-4	Hair Pin — Cotter	3
16	3718	Blade R.H. 16"	1	52	5236	Ass'y. Bracket	1
17	3719	Blade L.H. 16"	1	53	908032-4	Bolt — Hex $\frac{3}{8}$ -16 x $\frac{3}{4}$	4
18	3716	Cup	2	54	3545	Rod	1
19	933211	Roll Pin $\frac{1}{4}$ x $\frac{3}{4}$	4	55	4495	Ass'y. Link & Pin	1
20	1336	Washer — Dome	2	56	4490	Ass'y. Latch & Shaft	1
21	908033-6	Bolt — Nylock $\frac{3}{8}$ -16 x $\frac{7}{8}$	2	57	4494	Ass'y. Plate & Pin R.H.	1
22	3155	Shaft — Cross	1	58	4497	Plate — Mounting L.H.	1
23	4113	Tube Pivot	1	59	908034-4	Bolt — Hex $\frac{3}{8}$ -16 x 1	3
24	S-50-112	Snap Ring $1\frac{1}{8}$ shaft	2	60	908086-4	Bolt — Rd. Hd. $\frac{3}{8}$ -16 x 1	1
25	3138	Housing	2	61	S-52-12	Hairpin Cotter	1
26	1515	Bearing	2	62	5240	Roller	1
27	920083-4	Lockwasher $\frac{3}{8}$ Dia.	4	63	5241	Shaft	1
28	3130	Gear	2	64	932017-4	Cotter Pin $\frac{1}{8}$ x 1	2
29	937009	Key #5 Woodruff	2	65	920011-4	Washer $\frac{1}{2}$ SAE	2
30	915639-4	Nut $\frac{5}{8}$ -18 Elastic Stop	2	66	2877	Wheel	2
31	1624	Pulley	1	67	4177	Bolt — Shoulder	2
32	937014	Key #9 Woodruff	1	68	1577	"V" Belt — 28"	1
33	909862-6	Set Screw $\frac{5}{16}$ -18 x $\frac{5}{16}$ Nylock	1	69	1578	"V" Belt — 37"	2
34	3141	Cover — Gear	2	70	3710	Decal — Grease	2
35	3757	Plug Button	2	71	4148	Decal — Caution	1
36	1304	Screw — Hex #8-32 Self Tap	8				

RM 324



70  
71

---

Wheel Horse Service Bulletins 1961 - 1990: **#57** Issued: December 14, 1964

## **Rotary Mowers - Harder Woodruff Keys**

*[Previous](#)   [Table of Contents](#)   [Next](#)*

---

### TO OUR DEALERS & DISTRIBUTORS

Our 1965 model rotary mowers (RM-324, RM-364, and the Ranger mowers) are being assembled with hardened woodruff keys (Part No. 937084) under the Part No. 3130 Face Gears and the Part No. 3131 Spur Gears. The hardened keys have greater shear strength, thus minimizing service calls and twin housing breakage. For easy identification, the hardened key is black in color.

The Part No. 937084 Woodruff Key (hardened) should be utilized in the repair of all gear-driven Wheel Horse rotary mower attachments, both current production and previous models. Be sure you have genuine Wheel Horse replacement keys in stock, as they are manufactured to proper specifications.

We recommend that you return your present stock of Part No. 937009 Keys (soft) to your distributor for consolidated shipment to the factory and place your order for your hardened key requirements. At present, the soft keys are used in no other location.

Jack D. Walton

Service Manager

JDW:jr