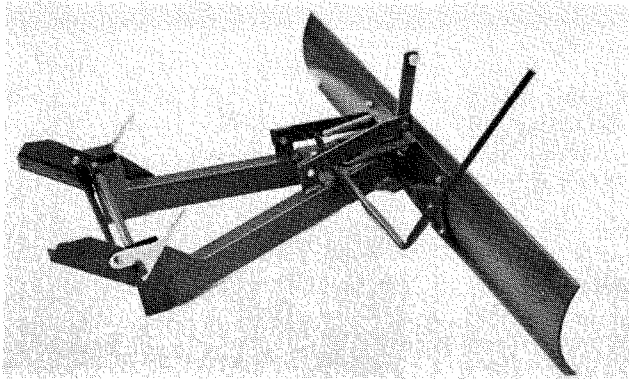


PARTS LIST AND INSTRUCTIONS

MID-MOUNTED GRADER BLADE

FACTORY ORDER NUMBER 7-1122

(Formerly 7-1121)



The blade is shipped complete in one carton. It has been partially preassembled. To complete the assembly, group the parts similar to that shown in the parts drawing.

Prepare the tractor by removing the links that hold the 3 point Hitch bracket to the axle. See Fig. 1.

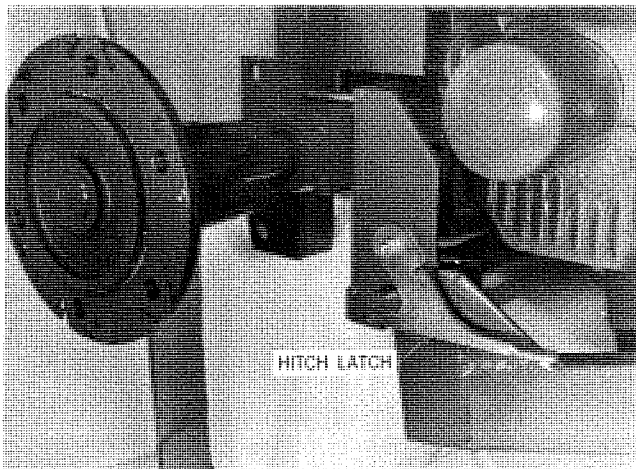


FIGURE 1

Install mounting bracket assembly, item 1, using the same bolts that held the links.

Remove the hairpin near the hitch latches, item 2, and raise the latches so the "U" notch is exposed to receive the blade shaft.

To install the blade index lever, item 5, slip the handle under the left side of the lift assembly, item 6, and work handle through until the left end can be inserted into the bushing. Complete the assembly by fastening to the "A" frame with the bolts that are preassembled. Hook the spring to the small ear on the index assembly.

Using the bolts in the blade, bolt it to the matching holes in the blade pivot.

Slide the "A" frame under the right side of the tractor and to the rear so the mounting shaft can engage the hitch slots.

Lower each latch and reinstall each hairpin.

Attach the lift link, item 7, to the lift assembly, item 6, as shown in Fig. 2 and attach to the tractor hydraulic lift.

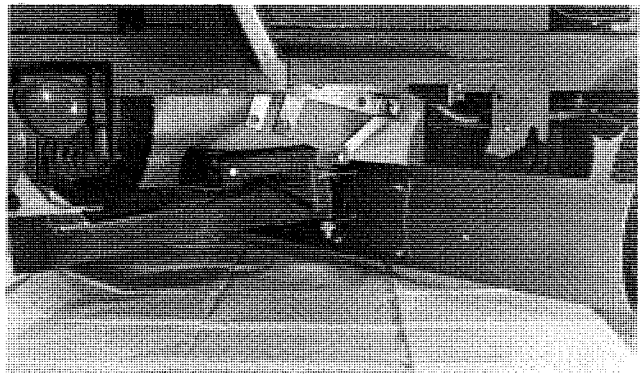


FIGURE 2

OPERATION:

Using grease or engine oil lubricate the moving parts before use and relubricate each 10 hours of use thereafter.

The blade is adjustable and may be locked in straight, left or right angle positions.

This adjustment is made by pulling the index lever, item 5, to the rear and moving the blade accordingly. The index lever will fall into the indexing slot and maintain the blade in the selected position.



WHEEL HORSE

lawn & garden tractors

As installed the blade will float in use. To lock out the float feature insert a $\frac{1}{2} \times 2$ clevis pin through the lift arms as shown in Fig. 3. Secure it with a hairpin.

CAUTION:

Avoid hitting solid objects with the blade.

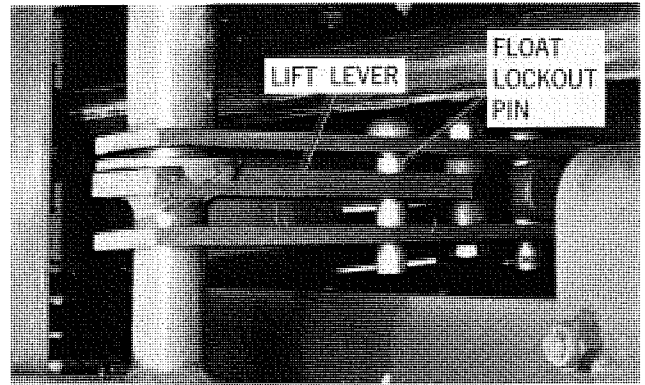
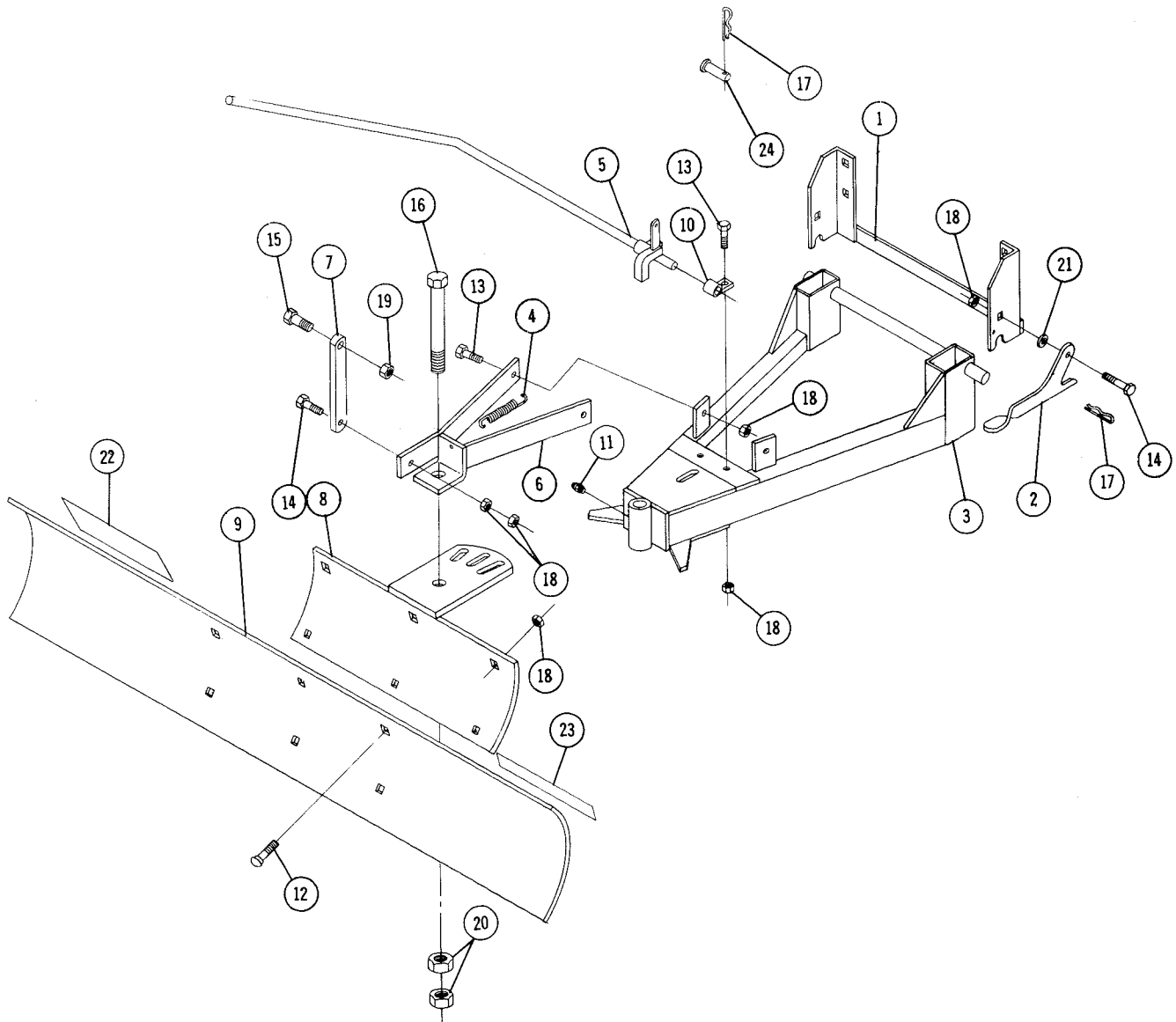


FIGURE 3

PARTS DRAWING

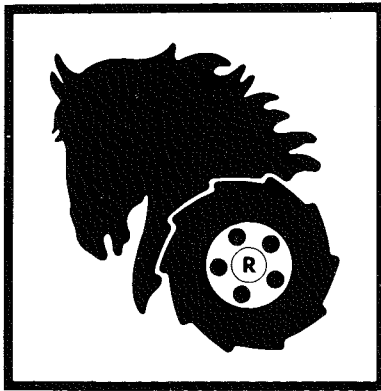


PARTS LIST — MID MOUNTED GRADER BLADE

FACTORY ORDER NUMBER 7-1122

Parts available only through Authorized Dealers.
 When ordering parts always list Part No. and Description.
(Specifications subject to change without notice.)

ITEM NO.	PART NO.	DESCRIPTION	NO. REQ'D.
1	104513	Bracket — Rear Mounting	1
2	7704	Plate — Latching	2
3	103620	"A" Frame Assembly	1
4	103621	Spring	1
5	103622	Blade Index & Lock Lever	1
6	103623	Assembly Lift	1
7	103624	Link — Lift	1
8	103625	Pivot & Blade Mount	1
9	103626	Blade	1
10	103627	Bushing — Index Lever	1
11	1030	Fitting — Grease	1
12	900063	Bolt — Carriage $\frac{3}{8}$ -16 x 1	8
13	908034	Bolt — Hex $\frac{3}{8}$ -16 x 1	4
14	908035	Bolt — Hex $\frac{3}{8}$ -16 x $1\frac{1}{4}$	2
15	908059	Bolt — Hex $\frac{1}{2}$ -13 x $1\frac{1}{2}$	1
16	908109	Bolt — Hex $\frac{3}{4}$ -10 x 5	1
17	933505	Hairpin	3
18	915113	Nut — Eslok $\frac{3}{8}$ -16	13
19	915115	Nut — Eslok $\frac{1}{2}$ -13	1
20	915241	Nut — Jam $\frac{3}{4}$ -10	2
21	920009	Washer — $\frac{3}{8}$ SAE	3
22	103631	Decal — Caution	1
23	103174	Decal — Wheel Horse	1
24	933000	Pin	1



WHEEL HORSE PRODUCTS, INC.

515 W. Ireland Road

South Bend, Indiana 46614

Wheel Horse Service Bulletins 1961 - 1990: **#224a** Issued: March 1981
50" Mid-Mount Blade and 56" Snow/Dozer Blade

[Previous](#) [Table of Contents](#) [Next](#)

VIN 7-1122 and VINs 86-56BA01 (and prior), 96-56BA01, 06-56BA01

THIS BULLETIN SUPERSEDES BULLETIN 224, ISSUED MARCH, 1978

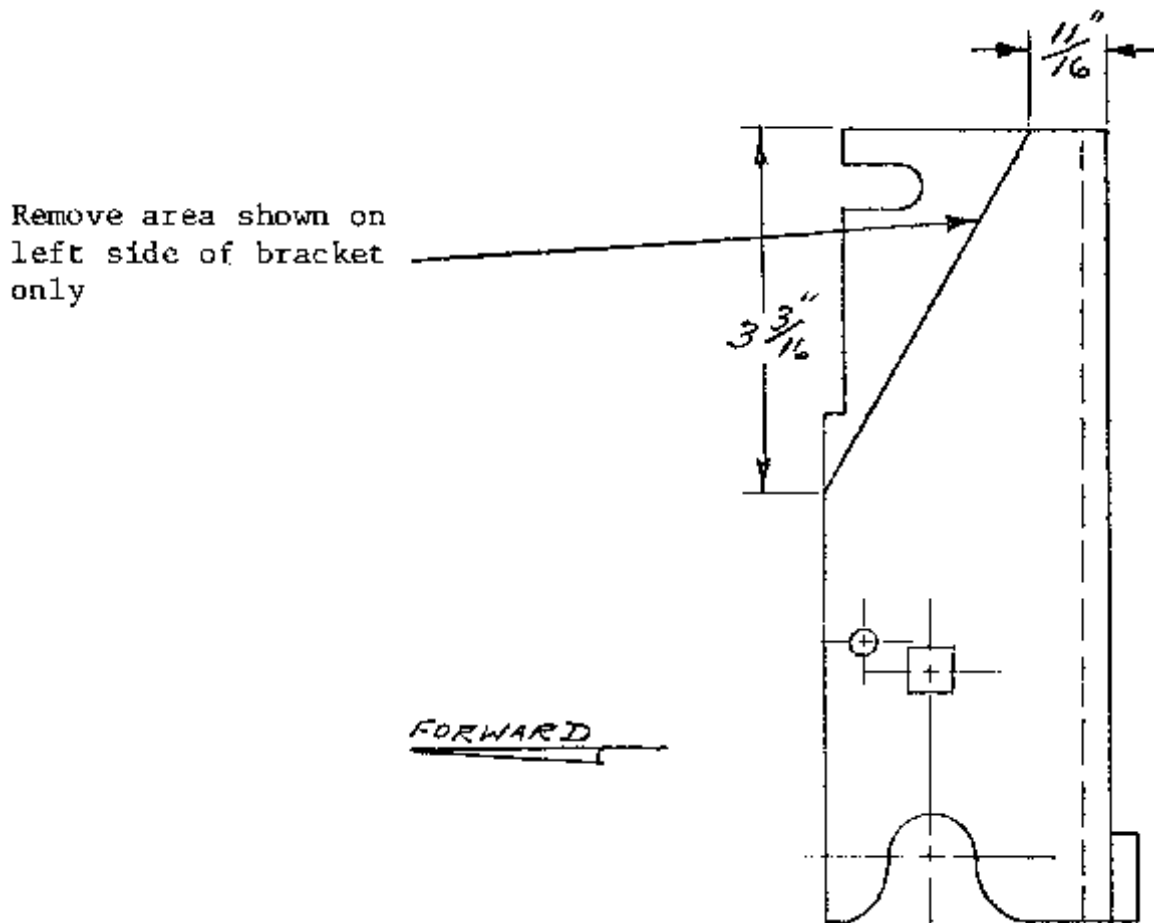
To All Dealers:

1. Subject

1.1 Axle mounting bracket, Part 104513, interferes with brake drum when installed on 1978 and later D-160 and D-200 tractors.

2. Service Action

2.1 Saw off a portion of the bracket as shown in illustration.



ROUTING	SERVICE MANAGER	SALES MANAGER	PARTS MANAGER	CHIEF MECHANIC	MECHANIC NO 1	MECHANIC NO 2	MECHANIC NO 3	MECHANIC NO 4	RETURN THIS TO
INITIAL HERE →									