

PARTS LIST AND INSTRUCTIONS



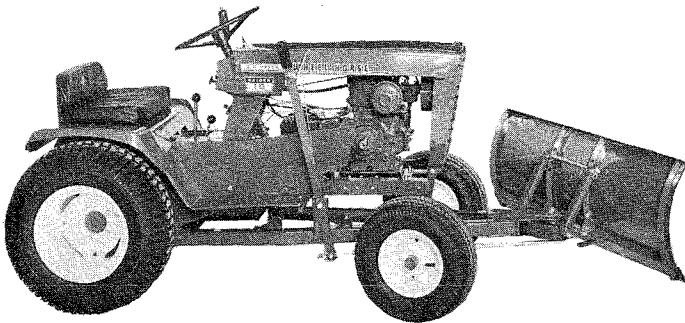
WHEEL-HORSE PRODUCTS, INC. • SOUTH BEND, IND.

42" BLADE

WITH MOUNTING ASSEMBLY
FOR LONG FRAME TRACTORS

BLADE #6-9622

(Formerly 6-9621)



DESCRIPTION

The Dozer Blade Assembly is shipped in two separate cartons. A blade package and "A" frame package. This carton contains the 42" blade and must be used with "A" Frame No. 6-4112 or 6-4113.

ASSEMBLY AND MOUNTING

1. Install the mounting bracket assembly (see Fig. 1). The bracket should be centered on the axle housing. Secure in place with the links and $\frac{3}{8}$ -16 x $3\frac{1}{2}$ " carriage bolts and $\frac{3}{8}$ -16 elastic stop nuts.

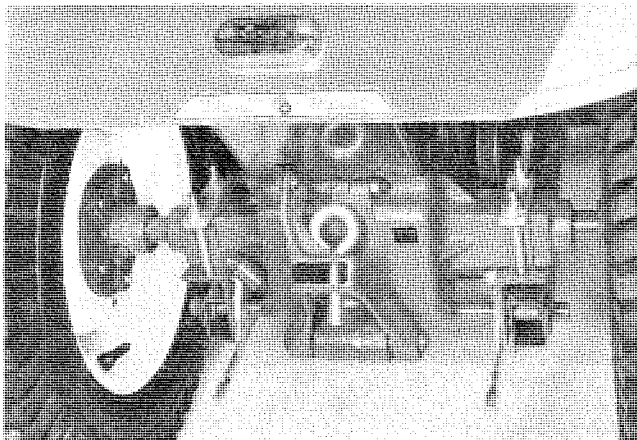


FIG. 1

Angle Spacers, Part No. 7713 (Item #14 on the exploded view drawing) are used to fill the gap between the bolts and the axle housing. The spacers are not used on the Wheel-A-Matic (Automatic Transmission) type tractors. See Fig. 1. The frame cross shaft fits in the end hole, as shown on all tractors that have a $45\frac{1}{2}$ " wheel base and the Commando 800. All others use the second hole.

Note: On Commando 800's, remove the #102373 tractor lift bar assembly, #102385 lift rod and attaching hardware before proceeding to step #2. This is accomplished by removing the E-ring from the lift bar pivot shaft, sliding bearing inward on shaft and slipping bar out of pivot holes.

2. Slide the frame assembly under the tractor. Insert the rear cross shaft on the frame assembly in the mounting bracket and latch. Be sure the index

lever on the frame assembly is up and out of the way before the frame is locked in position. See Fig. 1.

3. Fit one end of the lift bar in the second hole (hole nearest the driver) of the tractor lift arm. The other end fits into a hole or a slot on the lift plate. The slot is used for Models 1046, 1056, 1076, 1276, 1057, 1257, 1077, 1277, Chargers, Electro 12, and Raiders. All other models use the hole.
4. Remove the large $\frac{3}{4}$ nut and bolt holding the pivot sector. Remove the pivot sector. The Blade Control Rod, Part No. 7702, is inserted through the bottom of the pivot sector, and secured with the hairpin cotter. Bolt the Pivot Sector, Part No. 5102, to the frame assembly using the Hex Bolt, Part No. 908256-4, and Part No. 915640-4, elastic stop nut. (NOTE: Apply a liberal coat of grease before installing.) Insert the bolt from the bottom and tighten, leaving it loose enough for the blade to swing free. See Fig. II. Attach the control rod to the control handle.

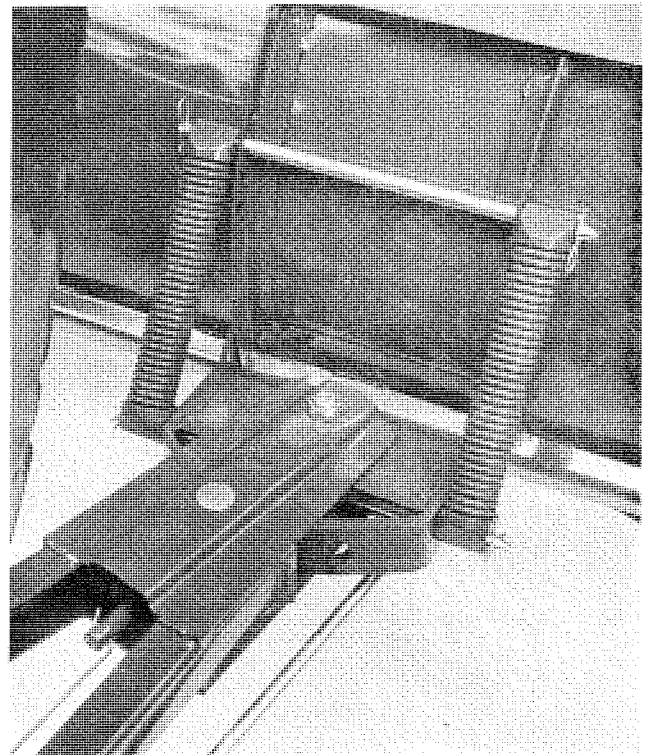


FIG. II

5. Attach the Blade Assembly, Part No. 5109, to the pivot sector using Part No. 4564, Lower Pivot Rod, and two $\frac{1}{8}$ " x 1" Cotter Pins, Part No. 932017-4. Next, install the two springs with the Pivot Rods, Part No. 5120. Fasten to the pivot sector first, with two of the hairpin coppers. Insert the other pivot rod in the blade angles. The angle of the blade will be determined by the hole in

which the pivot rod is placed. For general use, the second hole down from the top is used. Tilt forward for earth spreading; tilt back for more aggressive action. See Fig. 11.

6. Connect the wire rod from the assembly lever to the index plate. The bolt might have to be loosened to permit free movement of the plate.

OPERATION

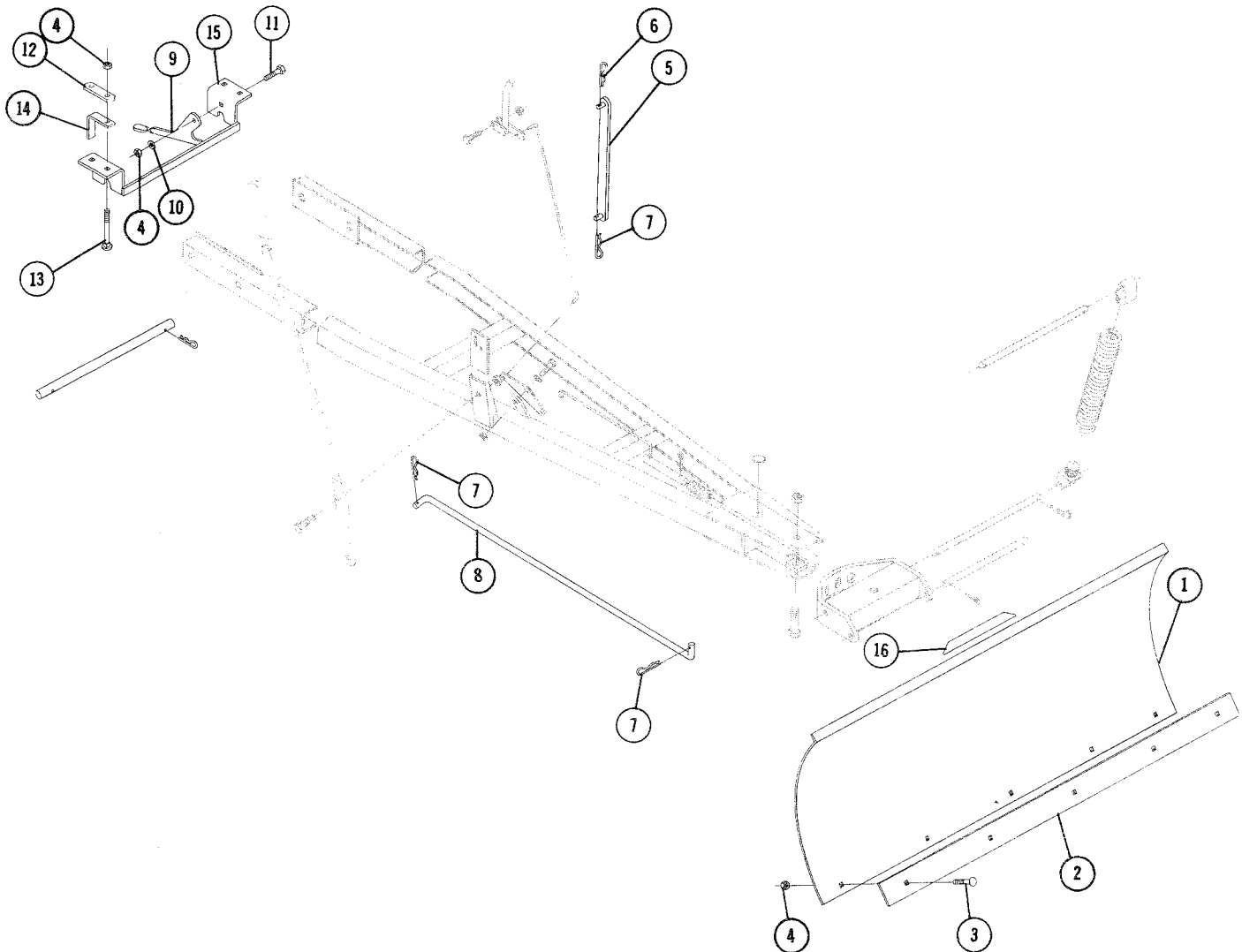
This dozer is equipped with a spring trip device. If the blade should strike a solid object, it will tilt forward and slide over. The dozer blade is adjustable and may be locked in three different positions: straight, right angle, and left angle. These adjustments are easily accomplished from the tractor seat

by operating the convenient turn lever. The blade is adjusted up and down with the lift lever.

Before operation, make sure that all bolts are tight and cotter pins opened. Excessive play in the pivot sector may be removed by tightening the large pivot bolt. The blade edge is reversible and replaceable. After the edge is worn, remove the five bolts securing it to the blade and turn it over, providing a new cutting edge.

A light grade of machine oil should be applied to all moving parts, before operation, and after every 10 hours of use.

(CAUTION: Avoid hitting solid objects with the blade, as this could result in damage to the blade and injury to the operator.)



PARTS LIST

When ordering parts always list Part No. and name of part.

Parts available only through Authorized Dealers.

(Specifications subject to change without notice.)

Item No.	Part No.	Description	No. Req'd.
1	5109	Ass'y. Blade	1
2	2346	Plate — Blade Edge	1
3	900062-4	Bolt — Carriage $\frac{3}{8}$ -16 x $\frac{3}{4}$	5
4	915663-4	Nut $\frac{3}{8}$ -16 Elastic Stop	11
5	7706	Ass'y. Lift Bar	1
6	933505-4	Hairpin Cotter	1
7	933512-4	Hairpin Cotter	3
8	7702	Rod Blade Control	1

Item No.	Part No.	Description	No. Req'd.
9	7704	Plate — Latching	2
10	920009-4	Washer $\frac{3}{8}$ SAE	2
11	908034-4	Bolt Hex $\frac{3}{8}$ -16 x 1	2
12	7711	Link	2
13	900073-4	Bolt Carriage $\frac{3}{8}$ -16 x $3\frac{1}{2}$	4
14	7713	Spacer — Angle	2
15	7710	Ass'y. Bracket Mounting	1
16	5604	Decal — Attachment	1