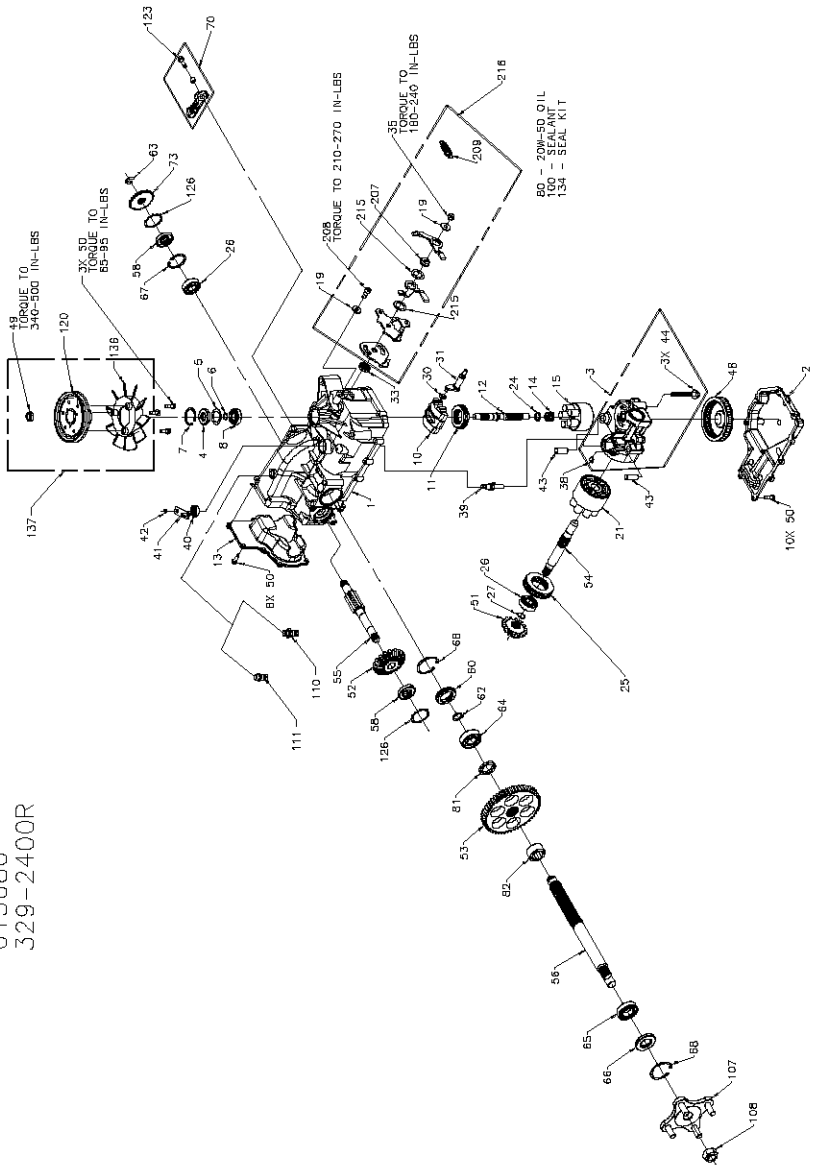


015680
329-2400R



P.1 of 2. 7074-2R-#2

015680
329-2400R

ITEM NO.	HYDRO-GEAR PART NO.	QTY.	DESCRIPTION
1	511185	1	KIT, HOUSING-MAIN
		2	HOUSING, MAIN
		2	GRADLE BEARING
		1	LIP SEAL
2	506918M	1	TRUNNION BUSHING
3	70679	1	LOWER HOUSING
		1	KIT, CENTER SECTION
		1	CENTER SECTION
		1	BUSHING, .67 X 1.03 X .75
		1	SPACER, .95 X 2.5
		3	CHECK PLUG ASSEMBLY, .044
4	9008000-0128	2	LIP SEAL
5	2003016	1	SPACER
6	2003016	1	WIRE RETAINING RING
7	2003052	1	RETAINING RING
8	2003043	1	BALL BEARING
10	2003087	1	VARIABLE SWASHPLATE
11	50551	1	THRUST BEARING 30 X 52 X 13
12	50005	1	INPUT SHAFT
13	506918M	1	COVER-BACK
14	2003014	1	SPRING, BLOCK
15	70331	1	10cc CYLINDER BLOCK
		5	10cc PISTON SPRING
		5	PISTON SEAT WASHER
		5	10cc PISTON
18	44130	2	WASHER
21	70082	1	21cc CYLINDER BLOCK ASS'Y
		1	21cc CYLINDER BLOCK
		7	21cc PISTON SPRING
		7	PISTON SEAT WASHER
		7	10cc PISTON
24	2003017	7	WASHER, BLOCK THRUST
25	50552	1	THRUST BEARING 42 X 68 X 16
26	50316	2	BALL BEARING
27	5000622	1	WIRE RETAINING RING
30	506918	1	COVER-FRONT
31	506918	1	TRUNNION ARM
33	8008000-0128	1	LIP SEAL
35	503317	1	NUT
38	70680	1	KIT, BYPASS PLATE
39	2003555	1	BYPASS ACTUATOR
40	45074	1	LIP SEAL
41	50270	1	BYPASS ARM
42	44970	1	RETAINING RING
43	50002	2	PIN
44	50016	3	SCREW
46	50890	1	FILLET
49	51244	1	HEX LOCK NUT, 1/2-20 (NYLON INSERT)
50	50742	21	SPRING, .75 X .75 LONG
51	50742	1	BEVEL GEAR
52	50745	1	19T BEVEL GEAR
53	50745	1	S3T SPIUR GEAR
54	50757	1	MOTOR SHAFT
55	51288	1	BRAKE SHAFT
56	50748	1	AXLE SHAFT
58	51161	2	SEAL, LIP 17 X 40 X 7

ITEM NO.	HYDRO-GEAR PART NO.	QTY.	DESCRIPTION
60	50985	1	SEAL PLUG - SIDE
62	50758	1	RETAINING RING - AXLE
63	51109	1	RING, RETAINING
64	50743	1	BEARING-BALL 20X47X14(6504)
65	50740	1	BEARING-BALL 20X47X12(6005)
66	50751	1	SEAL
67	50359	1	RETAINING RING
68	50760	2	RETAINING RING-AXLE
70	70392	1	BRAKE ARM SERVICE ASSEMBLY
		1	BRAKE ARM
		1	CLEVIS PIN
		1	BUSHING 0.255X0.381X0.330
73	50794	1	BRAKE DISC
80		7802	20M-50 OIL
81	50942-2	1	AXLE BUSHING
82	50942-1	1	AXLE BUSHING
100	50928-1	1	SCALANT
107	70374	1	HUB ASSEMBLY
		4	HUB BOLT
		1	LOG BOLT 3/4-16
108	50863	1	PLASTIC HOSE FITTING ASSEMBLY
110	70110	1	O-RING
		1	CAP VENT ASSEMBLY
111	70109	1	CAP-POCKET VALVE
		1	PLASTIC VENT
120	50302	1	PULLEY, 84-50 X 1.825
123	51076	1	HEX WASHER HEAD SCREW, 1/4-20 X 7/8
126	51076	2	RING, RETAINING
134	70553	1	KIT, SEAL
		1	SEAL, LIP 15 X 35 X 7
		1	RING, RETAINING
		1	SEAL, LIP 16 X 35 X 7
		1	SEAL, LIP 16 X 25 X 7
		1	RING, RETAINING
		2	SEAL, LIP 19 X 40 X 7
		1	SEAL, LIP 1.85 X .32
		1	RING, RETAINING
		1	RING, RETAINING 440 EXTERNAL
		1	SEAL, LIP .98 X 1.85 X .276
		2	RING, RETAINING
		2	RING, RETAINING
		1	FAN, 6 INCH
136	51385	1	KIT, FAN/PULLEY
137	70591	1	WASHER
216	70609	2	WASHER
		1	HEX LOCK NUT, 5/16-24 UNIF (NYLON INSERT)
		1	SPACER, RTN
		1	SCREW, 5/16-24 X .75 (PATCO)
		1	WASHER, NYLON
		2	SPRING EXTENSION
		1	CONTROL ARM
		1	ARM, RTN SCISSOR, OUTER
		1	ARM, RTN SCISSOR, INNER
		1	ARM RETURN



P.2 of 2. 7074-2R-#2