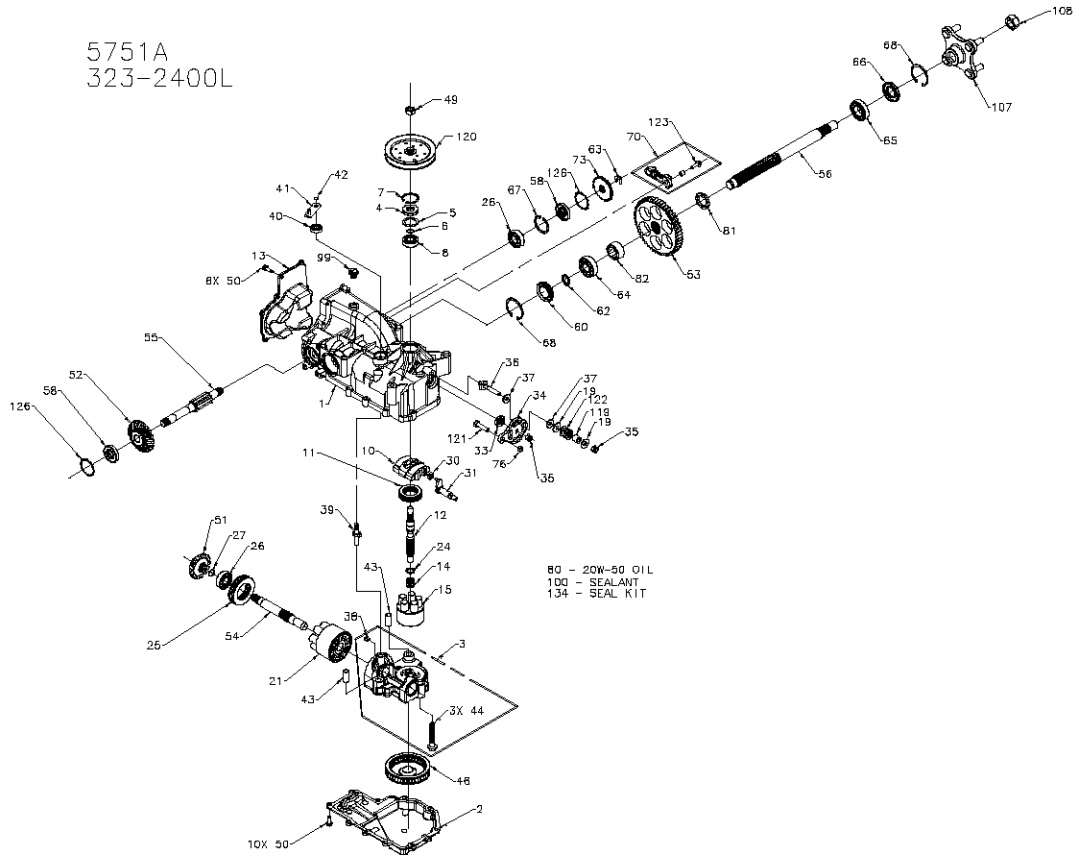


5751A
323-2400L



5751A
323-2400L

ITEM #	PART #	QTY	DESCRIPTION	ITEM #	PART #	QTY	DESCRIPTION
1	70590	1	KIT, HOUSING-MAIN	55	51298	1	BRAKE SHAFT
		1	HOUSING, MAIN	56	50748	1	AXLE SHAFT
		2	CRADLE BEARING	58	41161	2	SEAL, LIP 17 X 40 X 7
		1	LIP SEAL	60	50895	1	SEAL PLUG - SIDE
		1	TRANSITION BUSHING	62	50759	1	RETAINING RING - AXLE
2	50890RM	1	LOWER HOUSING	63	51108	1	RETAINING RING
3	70867	1	KIT, CENTER SECTION	64	50743	1	BEARING-BALL 20X47X14(6204)
		1	CENTER SECTION	65	50740	1	BEARING-BALL 25X47X12(6005)
		1	BUSHING .67 X 1.03 X .75	66	50751	1	SEAL
		1	PLATE, BYPASS	67	50329	1	RETAINING RING
		3	SCREW 3/8-24 X 2.5	68	50760	2	RETAINING RING-AXLE
		2	CHECK PLUG ASSEMBLY, .027	70	70391	1	LH, BRAKE ARM SERVICE ASSEMBLY
4	9008000-0128	1	LIP SEAL			1	BRAKE ARM
5	2003018	1	SPACER			1	CLEVIS PIN
6	2003016	1	WIRE RETAINING RING			1	BUSHING .255 X .381 X .330
7	2003052	1	RETAINING RING	73	50754	1	HEX WASHER HEAD SCREW, 1/4-20 X 7/8
8	2003043	1	BALL BEARING	76	43083	1	BRAKE DISC
10	2003087	1	VARIABLE WASHPLATE			1	NUT, HEX 5/16-18
11	50551	1	THRUST BEARING 30 X 52 X 13	80		79oz	20W-50 OIL
12	50005	1	INPUT SHAFT	81	50942-2	1	AXLE BUSHING
13	50891RM	1	COVER-BACK	82	50942-1	1	AXLE BUSHING
14	2003014	1	SPRING BLOCK	99	8005200-5600	1	PLUG, PLASTIC
15	70331	1	10cc CYLINDER BLOCK ASS'Y	100	50898	1	SEALANT
		1	10cc CYLINDER BLOCK	107	70314	1	HUB ASSEMBLY
		5	10cc PISTON SPRING			1	HUB
		5	PISTON SEAT WASHER	108	50863	1	LUG BOLT
		5	10cc PISTON	119	50278	1	NUT, HEX 3/4-16
19	44130	2	WASHER	120	51182	1	SPACER
21	70082	1	21cc CYLINDER BLOCK ASS'Y	121	51047	1	PULLEY, 4.5
		1	21cc CYLINDER BLOCK	122	50277	1	BOLT 5/16-18 X 1-1/4
		7	21cc PISTON SPRING	123	51076	1	HELICAL COMP. SPRING
		7	PISTON SEAT WASHER	125	51316	2	HEX WASHER HEAD SCREW, 1/4-20 X 7/8
		7	21cc PISTON	126	51316	2	RING, RETAINING
24	2003017	1	WASHER, BLOCK THRUST	134	70553	1	KIT, SEAL
25	50552	1	THRUST BEARING 42 X 68 X 16			1	SEAL, LIP 15 X 35 X 7
26	50315	2	BALL BEARING			1	RING, RETAINING
27	2000022	1	WIRE RETAINING RING			1	SEAL, LIP 12 X 25 X 7
30	2000015	1	SLOT GUIDE			1	SEAL, LIP 10 X 25 X 7
31	50807	1	TRANSITION ARM			1	RING, RETAINING
33	9008000-0126	1	LIP SEAL			2	SEAL, LIP 17 X 40 X 7
34	50749	1	CONTROL ARM			1	SEAL, LIP 1.85 X .32
35	50317	2	NUT			1	RING, RETAINING
36	50284	1	STUD - LONG 5/16-24			1	RING, RETAINING, .440 EXTERNAL
37	50281	2	FRICITION PLUCK			1	SEAL, LIP .98 X 1.85 X .276
38	70880	1	KIT, BYPASS PLATE			1	RING, RETAINING
39	2003555	1	BYPASS ACTUATOR			2	RING, RETAINING
40	48074	1	LIP SEAL			2	RING, RETAINING
41	50126	1	ARM, BYPASS			2	SEAL, LIP 17 X 40 X 5
42	44870	1	RING, RETAINING				
43	50002	2	PIN				
44	50016	3	SCREW				
45	50990	1	FILTER				
49	44133	1	HEX NUT 1/2-20				
50	50752	18	SCREW, 1/4-20 X .75 LONG				
51	50744	1	14T BEVEL GEAR				
52	50745	1	19T BEVEL GEAR				
53	50746	1	53T SPUR GEAR				
54	50757	1	MOTOR SHAFT				