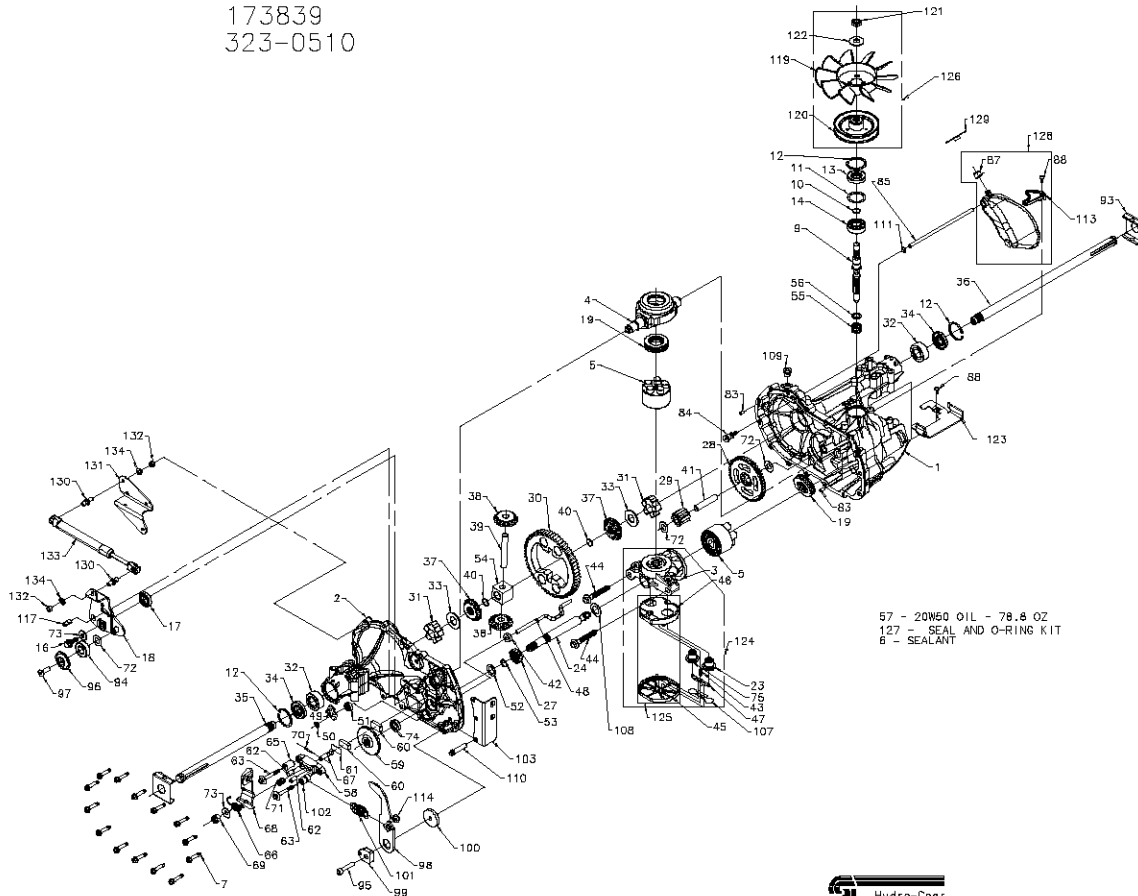


173839  
323-0510



57 - 20W50 OIL - 78.8 OZ  
127 - SEAL AND O-RING KIT  
61 - SEALANT

173839  
323-0510

ITEM	PART NUMBER	QTY	DESCRIPTION
1	70467	1	MAIN HOUSING, ASSEMBLY
		1	MAIN HOUSING, MACHINED
		1	BUSHING .855 X .855 X .790
2	70463	1	SIDE HOUSING, ASSEMBLY
		1	SIDE HOUSING, MACHINED
		1	BUSHING .855 X .855 X .790
		1	BUSHING .624 X .719 X .552
3	70477	1	CENTER SECTION, ASSEMBLY
		1	CENTER SECTION, MACHINED
		1	BUSHING .707 X .788 X .581
4	51048	1	SWASHPLATE, TRUNNION MACHINED
5	70331	2	BLOCK - ASSEMBLY
		1	BLOCK - CYLINDER
		5	PISTON
		5	SPRING, COMPRESSION
		5	WASHER - THRUST
6	50556	18.0 OZ	SEALANT
7	51180	14	HEX FLANGE SCREW 1/4-20 X 1.25
9	51082	1	SHAFT, INPUT
10	2000022	1	RING - RETAINING
11	50951	1	SPACER
12	50329	3	RING - RETAINING
13	51101	1	SEAL, LIP .67 X 1.58 X .276
14	50315	1	BALL BKG 17MM ID X 40MM OD X 12MM
16	51054	1	HEX FLANGE HEAD SCREW 5/16-24 X 0.75
17	51140	1	LIP SEAL .10 X .32 X .7
18	51420	1	ARM, CONTROL
19	50551	2	BEARING, 30X52X13 THRUST
23	51207	1	CHECK PLUG ASSEMBLY, WASHER
24	50966	1	SHAFT, MOTOR
27	51130	1	GEAR - PINNION, 13T
28	51129	1	10T,48T GEAR
29	51043	1	GEAR, 10T JACKSHAFT
30	51044	1	50T BALL BEAR
31	51008	2	SLEEVE BEARING .75 X 1.750 X .825
32	51089	2	SLEEVE BEARING (OUTBOARD) .75 X 1.975 X .625
33	44875	2	WASHER, 3/4 X 1-1/2 X .13 THK
34	51066	2	LIP SEAL AXLE SEAL
35	51068	1	SHAFT, AXLE .75 X 11.39 (KEY, R.H.)
36	51087	1	SHAFT, AXLE .75 X 16.99 (KEY, L.H.)
37	44099	2	MITER GEAR (SPL NED)
38	44027	2	MITER GEAR 15T (O.S. ID)
39	50146	1	SHAFT
40	44871	2	RING, SPIRAL RETAINING
41	51083	1	PIN, JACKSHAFT
42	51100	1	MAGNET, RING
43	51136	1	SPRING, BYPASS
44	50016	2	HYDRO MTC SCREW 3/8-24 X 2.5 LONG
45	51132	1	FILTER
46	51133	1	BASE, FILTER
47	51081	1	ACTUATOR, BYPASS
48	51088	1	ROD, BYPASS ACTUATOR
49	51089	1	ARM, BYPASS
50	51118	1	RETAINING RING, 250 EXTERNAL
51	51081	1	SEAL, LIP .741 X .250 X .250 TC
52	44371	1	FLAT WASHER, 5/8 ID X 1.0 OD X .05 THK
53	44145	1	RETAINING RING
54	51071	1	BEARING, CENTER BLOCK
55	2003014	1	SPRING - HELICAL COMPRESSION
56	2003017	1	WASHER
57		78.8 OZ	20W-50 OIL
58	44082	1	BRAKE YOKE
59	51072	1	ROTOR, BRAKE
60	44132	2	BRAKE PUCK
61	44134	1	PLUG PLATE
62	44127	2	BRAKE ACTUATING PIN
63	51146	2	HFHCS 1/4-20 X 2 W/PATCH, SPECIAL FLANGE
65	23711	1	SPADER
66	50684	1	SPRING, BRAKE ARM BIAS
67	44138	1	SO, HD BOL 5/16-24 - RIBBED
68	51445	1	ARM, BRAKE

ITEM	PART NUMBER	QTY	DESCRIPTION
69	44142	1	SLOTTED HEX NUT 5/16-24
70	44101	1	COTTER PIN 3/32 X 3/4
71	50919	1	COMPRESSION SPRING BRAKE ANTI-DRAG
72	50132	3	WASHER, HT, 5/16 X 1.0 O.D. X .032
73	44130	2	FLAT - WASHER 11/32 I.D. X 7/8 O.D.
74	44781	1	OIL SEAL .826 X 1.0 X .26
75	51084	1	CHECK PLUG ASSEMBLY, .027, WASHER
83	5004800-2806	2	PIN, STANDARD HEADLESS
84	51143	1	FITTING, 5/16 SAE 5/32 TUBE
85	51147	1	HOSE, EXPANSION TANK
87	51251	1	GAP, VENT
88	50963	2	BOLT, SELF TAPPING 10-32 X 1/2
93	51118	2	SPRING CLIP - HOUSING THRUST
94	44147	1	BEARING, BALL .62 ID X 1.38 X .44
95	50837	1	SCREW, SOCKET HEAD GAP 5/16-24 X 1-1/2
96	51200	1	SPACER, LOCATING
97	50870	1	SCREW, SFHCS 5/16-18 X 1
98	51356	1	ARM, RETURN
99	51097	1	PLUG, ADJUSTING
100	51122	1	WASHER, 24 ID X 1.80 OD X .238
101	51131	1	SPRING, EXTENSION
102	51123	1	SPACER, 280 ID X .560 OD X .870
103	51223	1	BRACKET, TORQUE
107	51134	1	DEFLECTOR
108	51089	1	WASHER, MOTOR SHAFT .71 ID X 1.15 OD X .030 THK
109	5005110-5600	1	PLUG, SAE #8
110	50688	1	SCREW TORX HEAD 5/16-18 T.F.
111	51144	1	O-RING, 103 X 269 ID
113	51179	1	BRACKET, SUPPORT EXPANSION TANK
114	51184	1	SPRING GUIDE
117	51124	1	PIN, SPRING
119	51230	1	FAN, 7 IN
120	51231	1	PULLEY
121	51244	1	HEX LOCK NUT 1/2-20 (NYLON INSERT)
122	51234	1	WASHER, BELLEVILLE
123	51229	1	BRACKET, LIP KEEPER
124	70484	1	CENTER SECTION - FILTER - BYPASS ASSEMBLY
		1	CENTER SECTION MACHINING
		1	BASE FILTER
		1	CHECK PLUG ASSEMBLY, .027 WASHER
		1	CHECK PLUG ASSEMBLY, WASHER
		1	SPRING, BYPASS
		1	ACTUATOR, BYPASS
		1	DEFLECTOR
		1	FILTER
		1	BUSHING .707 X .788 X .591
125	70466	1	FILTER ASSEMBLY
		1	FILTER
		1	BASE, FILTER
126	70480	1	FAN - PULLEY SERVICE ASSEMBLY
		1	WASHER, BELLEVILLE
		1	WASHER, BELLEVILLE
		1	FAN, 7 IN
		1	PULLEY
127	70463	1	SEAL - O-RING KIT
		1	SEAL, LIP .97 X 1.58 X .278
		1	LIP SEAL 18 X 32 X 7
		2	LIP SEAL .706 X 1.984 X .25
		1	SEAL, LIP .741 X .250 X .250 TC
		1	OIL SEAL .925 X 1.0 X .25
		1	O-RING .07 X .301 ID
128	70603	1	KIT, EXPANSION TANK
		1	TANK, EXPANSION ASSEMBLY
		1	CAP, VENT
		1	YSBOL - SELF TAPPING 10-32 X 1/2
		1	BRACKET, SUPPORT EXPANSION TANK
129	51252	1	CAP, EXPANSION TANK SHIPPING
130	51408	2	STUD, BALL
131	51421	1	BRACKET, CRUSIE DAMPER
132	43083	2	HEX NUT 5/16-18 NC
133	51420	1	DAMPER
134	51430	2	WASHER, HELICAL SPRING LOCK 5/16, REGULAR