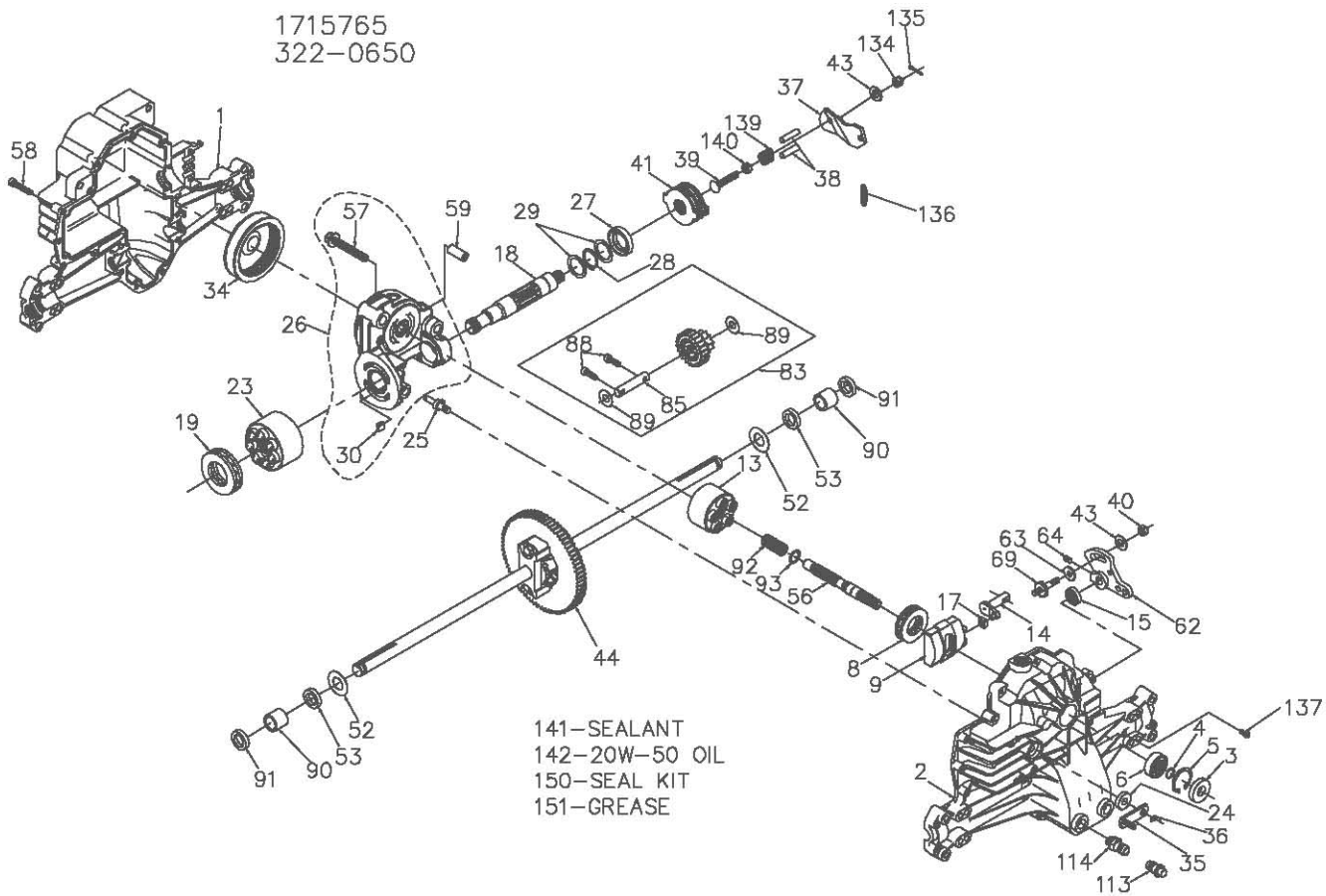


1715765
322-0650



Hydro-Gear
P.1 of 2. 70268-P6

1715765
322-0650

ITEM NO	HYDRO-GEAR PART NO	QTY	DESCRIPTION	ITEM NO	HYDRO-GEAR PART NO	QTY	DESCRIPTION
1	50074RM	1	HOUSING, LOWER	43	44130	2	WASHER-7/16 X 7/8 X .060
2	70255	1	ASSEMBLY, UPPER HOUSING	44	70226	1	DIFFERENTIAL ASSEMBLY
		1	HOUSING, UPPER			1	GEAR-DIFF. 50T
		1	BEARING-TRUNNION JOURNAL			2	DIFF. HOUSING
3	9008000-012B	1	SEAL-LIP			2	GEAR-BEVEL 14T
4	2003016	1	RING-WIRE RETAINING			2	GEAR-PLANET 10T
5	2003052	1	RING-RETAINING			2	RING-RETAINING
6	2003043	1	BEARING-SHAFT BALL			2	BOLT- DIFF. LOCKING
8	50551	1	BEARING-THRUST 30X52X13			1	AXLE SHAFT, RH
9	2003087	1	SWASHPLATE-VARIABLE			1	AXLE SHAFT, LH
13	70331	1	BLOCK-CYLINDER ASS'Y.			1	SPACER-DIFF
		1	BLOCK-CYLINDER			2	WASHER-3/4 X 1.5 X .13
		5	PISTON	52	44875	2	SEAL- .75 X 1.25 X .250
		5	PISTON SPRING	53	45076	2	SHAFT-INPUT
		5	PISTON SPRING WASHER	56	50005	1	BOLT, 3/8-24 X 2.5
14	2003005	1	ARM-TRUNNION	57	50016	3	SEAL- 1/4-20 X 1.38
15	9008000-0126	1	SEAL-LIP	58	44876	21	PIN-.5 OD X .43 ID X .750
17	2000015	1	GUIDE-SLOT	59	50002	2	ARM-CONTROL
18	50449	1	SHAFT-MOTOR	62	45007	1	PUCK-DAMPENER
19	50552	1	BEARING-THRUST 42X68X16	63	50281	1	SET SCREW
23	70082	1	BLOCK-CYLINDER (MOTOR) ASSY	64	50018	1	5/16-24 STUD
		1	BLOCK-CYLINDER	68	50426	1	JACK SHAFT/PINION GEAR ASSEMBLY
		7	PISTON	83	70292	1	JACK SHAFT
		7	PISTON SPRING			1	17T-23T CLUSTER ASSEMBLY
		7	PISTON SPRING WASHER			2	CAPSCREW 6M X 20 LG
24	45074	1	SEAL-LIP 10X25X7			2	WASHER 7/16 X 1 X .5
25	2003555	1	ACTUATOR-BYPASS				
26	70250	1	KIT, CENTER SECTION				
		1	PLATE, BYPASS	85	50559	1	JACK SHAFT
		2	CHECK PLUG ASSEMBLY	88	50154	2	CAPSCREW 6M X 20 LG
		1	CENTER SECTION	89	50132	2	WASHER 7/16 X 1 X .5
		1	DU BEARING	90	50118	2	SLEEVE BEARING
		3	BOLT-3/8-24 X 2.5	91	50941	2	SEAL, LIP 0.75X1.00X0.158
		1	BUSHING, 1.02 X 1.1 X .87	92	2003014	1	SPRING, BLOCK
27	45075	1	SEAL-LIP 26X42X8	93	2003017	1	WASHER, BLOCK THRUST
28	50007	1	RING-RETAINING	113	70109	1	CAP-VALVE ASSEMBLY
29	44872	2	WASHER-26X35X1			1	CAP-POPPET VALVE
30	70680	1	KIT, BYPASS PLATE			1	PLASTIC VENT
34	44864	1	OIL FILTER ELEMENT			1	FITTING-ORING ASSEMBLY
35	50126	1	ARM-BYPASS			1	ORING
36	44870	1	RING-RETAINING			1	PLASTIC HOSE FITTING
37	50130	1	ARM-ACTUATING			1	CASTLE NUT, 5/16-24
38	44891	2	PIN-ACTUATING	134	44142	1	COTTER PIN
39	50316	1	BOLT-5/16-18 X 1-3/4	135	44101	1	EXTENSION SPRING
40	50317	1	NUT-HEX LOCK 5/16-24	136	50384	1	SCREW, 10-32 X 1/2
41	70135	1	BRAKE ROTOR/STATOR KIT	137	50853	1	COMPRESSION SPRING
		4	STATOR-BRAKE	140	50431	1	NUT, HEX 5/16-24
		2	ROTOR-BRAKE	141	50928	1	SEALANT
				142		81oz	20W-50 OIL
				150	70312	1	SEAL KIT
				151	50416	1	GREASE

Hydro-Gear
P.2 of 2. 70268-P6