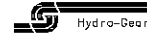
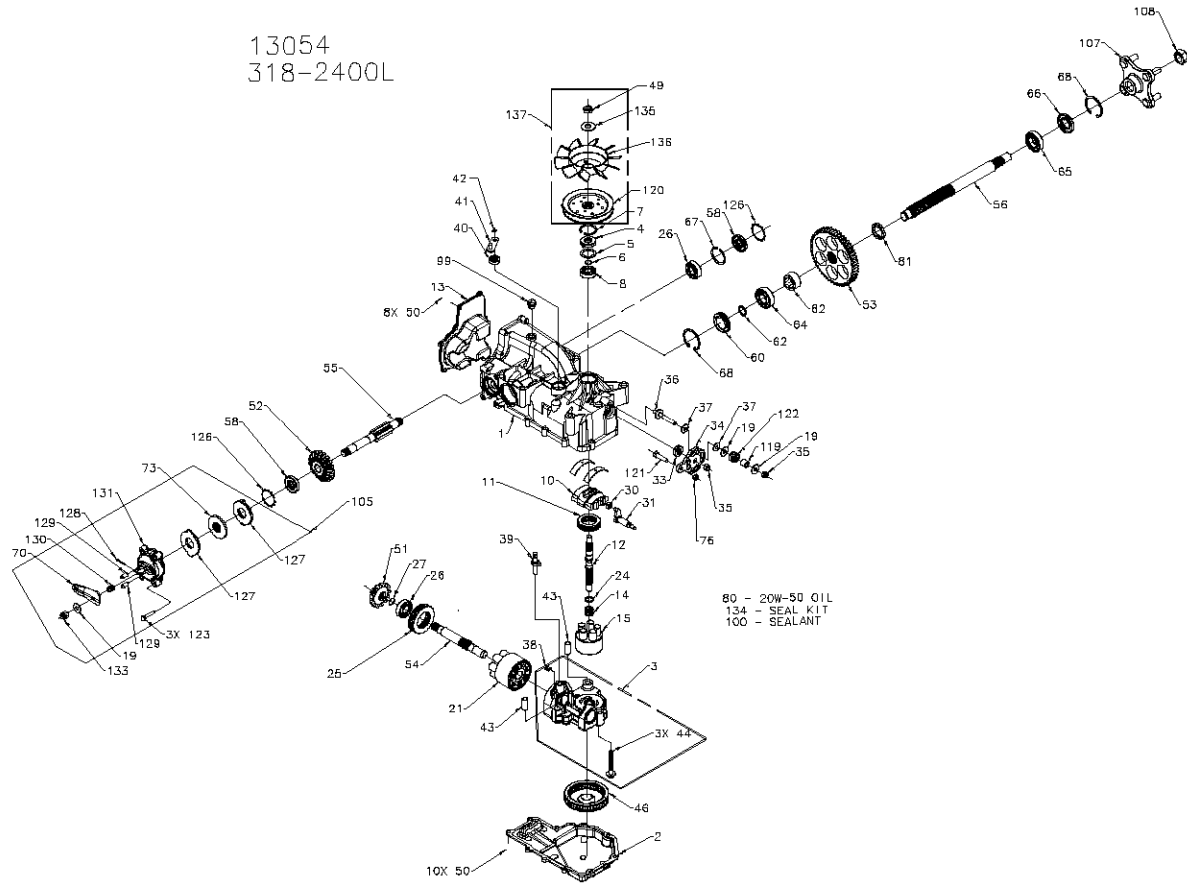


13054
318-2400L



13054
318-2400L

ITEM #	PART #	QTY	DESCRIPTION	ITEM #	PART #	QTY	DESCRIPTION
1	70558	1	KIT, HOUSING-MAIN	84	50743	1	BEARING-BALL 20K47X14 (8204)
		1	HOUSING, MAIN	85	50740	1	BEARING-BALL 25K47X12 (6005)
		2	CRADLE BEARING	66	50751	1	SEAL
		1	LIP SEAL	67	50328	1	RETAINING RING
		1	TRUNNION BUSHING	68	50760	2	RETAINING RING-AXLE
2	5DR9DRM	1	LOWER HOUSING	70	51349	1	ARM, BRAKE
3	70677	1	KIT, CENTER SECTION	73	44855	1	ROTOR, BRAKE
		1	ENTER SECTION	76	43083	1	HEX NUT 5/16-18
		1	BUSHING .67 X 1.03 X .75	80		79oz	20W-50 OIL
		1	PLATE, BYPASS	81	50942-2	1	AXLE BUSHING
		3	SCREW 3/8-24 X 2.5	82	50942-1	1	AXLE BUSHING
		2	CHECK PLUG ASSEMBLY, .027	99	9009200-3600	1	PLUG-PLASTIC
		1	LIP SEAL	100	50926	1	SEALANT
4	9008000-0128	1	SPACER	105	70561	1	KIT, BRAKE
5	2003016	1	WIRE RETAINING RING			1	WASHER
6	2003016	1	RETAINING RING			1	ARM, BRAKE
7	2003052	1	BALL BEARING			1	ROTOR, BRAKE
8	2003043	1	VARIABLE SWASHPLATE			3	SCREW, 1/4-28 X 1.38 W/PATCH
10	2003067	1	THRUST BEARING 30 X 52 X 13			2	STATOR, BRAKE FRICTION
11	50551	1	INPUT SHAFT			1	CUTTER PIN 3/32 X 3/4
12	50009	1	COVER-BACK			2	BRK ACTUATING PIN
13	50891RM	1	SPRING, BLOCK			1	COMPRESSION SPRING ANTI DRAG
14	2003014	1	10cc CYLINDER BLOCK ASS'Y			1	KIT, YOKE-BRAKE
15	70331	1	10cc CYLINDER BLOCK			1	SLOTTED HEX NUT 5/16-24
		5	10cc PISTON SPRING	107	70314	1	HUB ASSEMBLY
		5	PISTON SEAT WASHER			1	HEX BOLT
		5	10cc PISTON			4	LUG BOLT
19	44130	3	WASHER			1	NUT, HEX 3/4-16
21	70082	1	21cc CYLINDER BLOCK ASS'Y			1	SPACER
		1	21cc CYLINDER BLOCK	109	50863	1	PULLEY, 4.5
		7	21cc PISTON SPRING	120	51182	1	BOLT 5/16-18X1-1/4
		7	PISTON SEAT WASHER	122	50277	1	HELICAL COMP. SPRING
		2	PISTON	123	91341	3	SCREW, 1/4-28 X 1.25 W/PATCH
24	2003017	1	WASHER, BLOCK THRUST	126	91316	2	RING, RETAINING
25	50552	1	THRUST BEARING 42 X 68 X 16	127	51340	2	STATOR, BRK FRICTION
26	50315	2	BALL BEARING	128	44101	1	CUTTER PIN 5/32 X 3/4
27	2000022	1	WIRE RETAINING RING	129	44127	2	BRK ACTUATING PIN
30	2000015	1	SLOT GUIDE	130	50919	1	COMPRESSION SPRING ANTI DRAG
31	50897	1	TRUNNION ARM	131	70560	1	KIT, YOKE-BRAKE
33	9008000-0128	1	LIP SEAL			1	50 HD BOLT 5/16-24 RIBBED
34	50749	2	CONTROL ARM			1	NUT, BRAKE
35	50317	2	STUD - LONG 5/16-24			1	SLOTTED HEX NUT 5/16-24
36	50284	2	FRICTION PUCK	134	44142	1	KIT, SEAL
37	50281	1	KIT, BYPASS PLATE			1	SEAL, LIP 15 X 35 X 7
38	70680	1	BYPASS ACTUATOR			1	SEAL, LIP 12 X 25 X 7
39	2003555	1	LIP SEAL			1	SEAL, LIP 10 X 35 X 7
40	45074	1	LIP SEAL			1	RING, RETAINING
41	50128	1	BYPASS ARM			2	SEAL, LIP 17 X 40 X 7
42	44870	1	RETAINING RING			1	SEAL, LIP 1.85 X .32
43	50002	2	PIN			1	RING, RETAINING
44	50016	3	SCREW			1	RING, RETAINING 440 EXTERNAL
46	90890	1	FILTER			1	SEAL, LIP .88 X 1.85 X .278
49	51244	1	HEX LOCK NUT 1/2-20 (NYLON INSERT)			1	RING, RETAINING
50	50752	18	SCREW, 1/4-20 X .75 LONG			2	RING, RETAINING
51	50744	1	14T BEVEL GEAR			2	RING, RETAINING
52	50745	1	19T BEVEL GEAR			2	RING, RETAINING
53	50748	1	S3T SPIR GEAR	135	51234	1	WASHER, .531 X 1.250 X .092 (BELLEVILLE)
54	50757	1	MOTOR SHAFT	136	51362	1	FAN, 6", 10 BLADE
55	51335	1	BRK ACTUATING PIN	137	70563	1	KIT, FAN-PULLEY
56	50748	1	AXLE SHAFT			1	WASHER, .531 X 1.250 X .092 (BELLEVILLE)
58	51181	2	SEAL, LIP 17 X 40 X 7			1	FAN, 6", 10 BLADE
60	90895	1	SEAL PLUG - SIDE			1	HEX LOCK NUT 1/2-20 (NYLON INSERT)
62	50759	1	RETAINING RING - AXLE			1	PULLEY, 4.5

