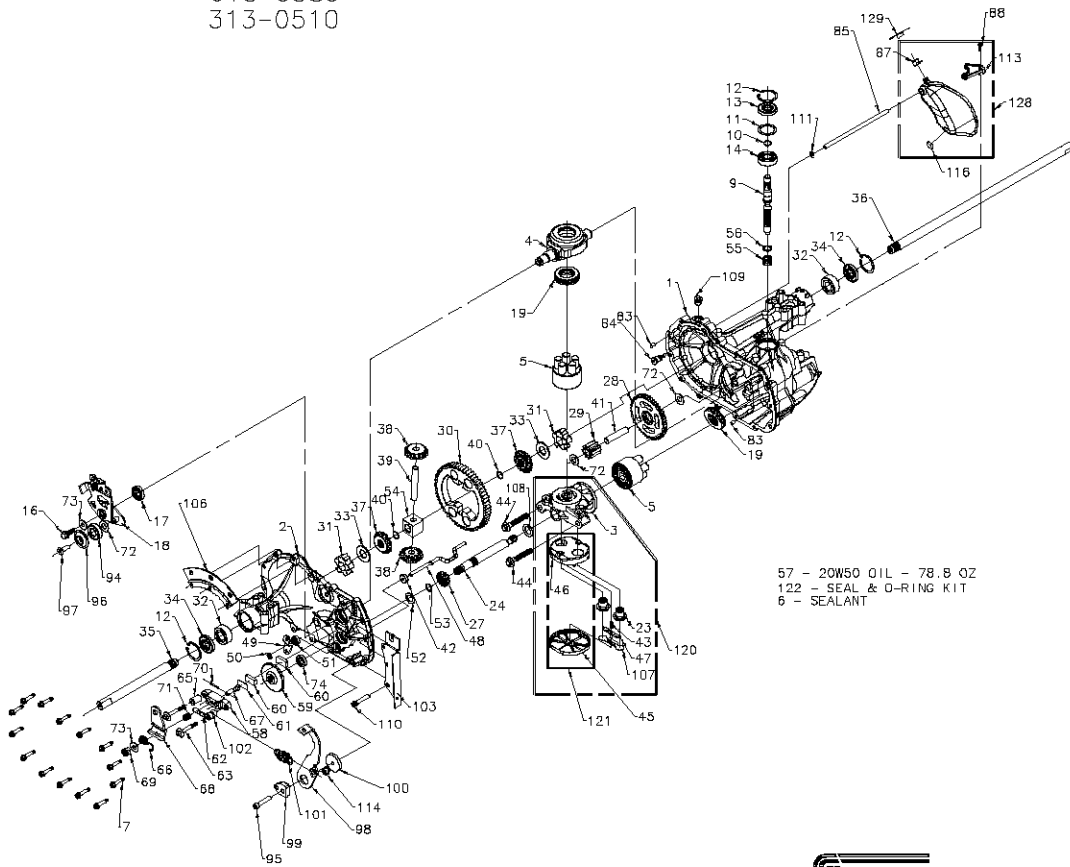


618-0389
313-0510



57 - 20W50 OIL - 78.8 OZ
122 - SEAL & O-RING KIT
6 - SEALANT

618-0389
313-0510

ITEM	PART NUMBER	QTY	DESCRIPTION
1	70467	1	MAIN HOUSING, ASSEMBLY
		1	MAIN HOUSING, MACHINED
		1	BUSHING 0.885 X 2.385 X 0.790
2	70466	1	SIDE HOUSING, ASSEMBLY
		1	SIDE HOUSING, MACHINED
		1	BUSHING 0.865 X 0.985 X 0.780
3	70477	1	CENTER SECTION, ASSEMBLY
		1	CENTER SECTION, MACHINED
		1	BUSHING 0.707 X 0.788 X 0.661
4	51046	1	SPACER PLATE, TRUNNION MACHINED
5	70331	2	BLOCK - ASSEMBLY
		1	BLOCK - CYLINDER
		5	PISTON
		5	SPRING, COMPRESSION
		5	WASHER - THRUST
6	50926	10.5 OZ	SEALANT
7	51180	14	HEX FLANGE SCREW 1/4-20 X 1.25
8	51092	1	SHAFT, INPUT
10	2000022	1	RING - RETAINING
11	50951	1	SPACER
12	50326	3	RING - RETAINING
13	51191	1	SEAL, LIP 67 X 1.58 X .276
14	50315	1	BALL BRG 17MM ID X 40MM OD X 12MM
16	51064	1	HEX FLANGE HEAD SCREW 5/16-24 X 0.75
17	51140	1	LIP SEAL 18 X 32 X 7
18	51119	1	ARM, CONTROL
19	50551	2	BEARING, 30X52X13 THRUST
23	51207	2	CHECK PLUG ASSEMBLY
24	50906	1	SHAFT, MOTOR
27	51190	1	GEAR, PINNION, 13T
28	51128	1	10T/48T GEAR
29	51043	1	GEAR, 10T JACKSHAFT
30	51044	1	50T BALL GEAR
31	51088	2	SLEEVE BEARING 76 X 1.750 X .625
32	51088	2	SLEEVE BEARING (OUTBOARD) 75 X 1.575 X .625
33	44875	2	WASHER, 3/4 ID X 1-1/2 OD X .13 THK
34	51068	2	LIP SEAL AXLE SEAL
35	51106	1	SHAFT, AXLE 0.75 X 8.12 (OD, RH)
37	51105	1	SHAFT, AXLE 0.75 X 21.78 (OD, LH)
38	44089	2	MITER GEAR (SPLINED)
39	44092	2	MITER GEAR 15T (G.5 ID)
39	50146	1	SHAFT
40	44871	2	RING, SPIRAL RETAINING
41	51083	1	PIN, JACKSHAFT
42	51100	1	WASHER, RING
43	51136	1	SPRING, BYPASS
44	50016	2	HYDRD MTC SCREW 3/8-24 X 2.5 LONG
45	51152	1	FILTER
46	51153	1	BASE FILTER
47	51091	1	ACTUATOR, BYPASS
48	51098	1	ROD, BYPASS ACTUATOR
49	51155	1	ARM, BYPASS
50	51116	1	RETAINING RING 0.250 EXTERNAL
51	51081	1	SEAL, LIP 0.741 X 0.250 X 0.250 TC
52	44371	1	FLAT WASHER, 5/8 ID X 1.0 OD X .05 THK
53	44145	1	RETAINING RING
54	51071	1	BEARING, CENTER BLOCK
55	2003014	1	SPRING - HELICAL COMPRESSION
56	2003017	1	WASHER
57		78.8 OZ	20W-50 OIL
58	44092	1	BRAKE YOKE
59	51072	1	ROTOR, BRAKE
60	44132	2	BRAKE PUCK
61	44124	1	PUCK PLATE
62	44127	2	BRAKE ACTUATING PIN
63	51146	2	HFHCS 1/4-20 X 2 W/PATCH, SPECIAL FLANGE
65	23711	1	SPACER

ITEM	PART NUMBER	QTY	DESCRIPTION
66	50884	1	SPRING, BRAKE ARM BIAS
67	44139	1	SO. HD. BOLT 5/16-24- RIBBED
68	51142	1	ARM, BRAKE
69	44142	1	SLOTTED HEX NUT 5/16-24
70	44101	1	COTTER PIN 3/32 X 3/4
71	50919	1	COMPRESSION SPRING BRAKE ANTI-DRAG
72	50132	3	WASHER, HT, 5/16 ID X 1.0 OD X .032
73	44130	2	FLAT - WASHER 11/32 I.D. X 7/8 O.D.
74	44781	1	OIL SEAL .625 X 1.0 X .25
83	9004800-2508	2	PIN, STANDARD HEADLESS
84	51143	1	FITTING, 5/16 SAE 5/32 TUBE
85	51147	1	HOSE, EXPANSION TANK
87	51251	1	CAP, VENT
88	50653	1	BOLT, SELF TAPPING 10-32 X 1/2
84	44147	1	BALL BEARING .62 ID X 1.58 X .44
95	50837	1	SOCKET HEAD CAP SCREW, 5/16-24 X 1-1/2
96	51200	1	SPACER, LOCATING
97	50670	1	SCREW, SFHCS
98	51129	1	ARM, RETURN
99	51097	1	PUCK, ADJUSTING
100	51122	1	WASHER, 0.325 OD X 1.80 ID X 0.150 W
101	51131	1	SPRING, EXTENSION
102	51123	1	SPACER, 0.60 OD X .260 ID X .870
103	51137	1	BRACKET, TORQUE
106	51139	1	BRACKET, AXLE SUPPORT
107	51134	1	DEFLECTOR
108	51069	1	WASHER, MOTOR SHAFT 0.71 ID X 1.15 OD X 0.030 THK
109	9005110-5800	1	PLUG, SAE #6
110	50888	1	TORX HEAD SCREW, 9/16-18 T.F.
111	51144	1	O-RING 0.67 X 0.301 ID
113	51179	1	BRACKET, SUPPORT EXPANSION TANK
114	51184	1	SPRING GUIDE
116	51196	1	SILICON SPONGE
120	70465	1	CENTER SECTION - FILTER - BYPASS ASSEMBLY
		1	CENTER SECTION MACHINING
		1	BASE FILTER
		2	CHECK PLUG ASSEMBLY
		1	ACTUATOR, BYPASS
		1	DEFLECTOR
		1	FILTER
		1	BUSHING, 707 X .788 X .591
121	70466	1	FILTER ASSEMBLY
		1	FILTER
		1	BASE, FILTER
122	70463	1	FILTER ASSEMBLY
		1	SEAL - O-RING KIT
		1	LIP SEAL 67 X 1.58 X .276
		2	LIP SEAL 18 X 32 X 7
		1	LIP SEAL .709 X 1.584 X .25
		1	SEAL, LIP 741 X 280 X .290 TC
		1	OIL SEAL .625 X 1.0 X .25
		1	O-RING 0.7 X .301 ID
128	70503	1	KIT, EXPANSION TANK
		1	TANK, EXPANSION
		1	CAP, VENT
		1	BOLT, SELF TAPPING 10-32 X 1/2
		1	BRACKET, SUPPORT EXPANSION TANK
		1	SILICON SPONGE 1/2 X 1/2 X 3/16
129	51252	1	CAP, EXPANSION TANK SHIPPING