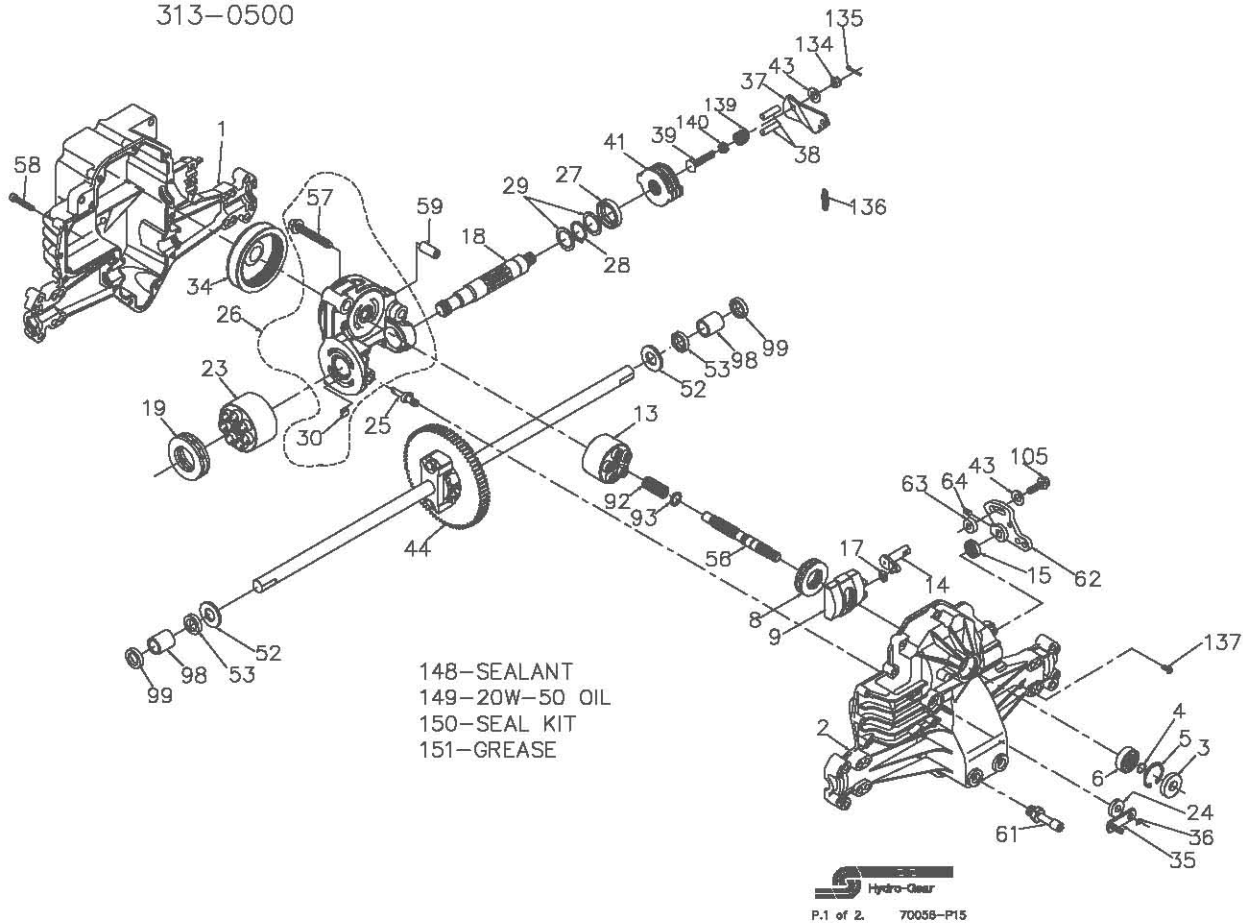


718-0254
313-0500



718-0254
313-0500

| ITEM NO | HYDRD-GEAR PART NO | QTY | DESCRIPTION | ITEM NO | HYDRD-GEAR PART NO | QTY | DESCRIPTION |
|---------|--------------------|-----|---------------------------|---------|--------------------|------|-------------------------------|
| 1 | 44863RM | 1 | HOUSING, LOWER | 39 | 50316 | 1 | BOLT-5/16-24 X 1-3/4 |
| 2 | 70254 | 1 | ASSEMBLY, UPPER HOUSING | 41 | 70135 | 1 | BRAKE ROTOR/STATOR KIT |
| | | 1 | UPPER HOUSING | | | 4 | BRAKE STATOR |
| 3 | 9008000-0128 | 1 | TRUNNION JOURNAL BEARING | | | 2 | BRAKE ROTOR |
| 4 | 2003016 | 1 | SEAL-LIP | 43 | 44130 | 2 | WASHER-7/16 X 7/8 X .060 |
| 5 | 2003052 | 1 | RING-WIRE RETAINING | 44 | 70128 | 1 | DIFFERENTIAL ASSEMBLY |
| 6 | 2003043 | 1 | RING-RETAINING | | | 2 | AXLE SHAFT |
| 8 | 50551 | 1 | BEARING-SHAFT BALL | | | 1 | 72T DIFFERENTIAL GEAR |
| 9 | 2003087 | 1 | BEARING-THRUST 30X52X13 | | | 2 | DIFFERENTIAL HOUSING |
| 13 | 70331 | 1 | SWASHPLATE-VARIABLE | | | 2 | 14T BEVEL GEAR |
| | | 1 | BLOCK-CYLINDER ASS'Y. | | | 2 | 10T PLANET GEAR |
| | | 1 | BLOCK-CYLINDER | | | 2 | RETAINING RING |
| | | 5 | PISTON | | | 2 | DIFFERENTIAL LOCKING BOLT |
| | | 5 | PISTON SPRING | 52 | 44875 | 1 | DIFFERENTIAL SPACER |
| | | 5 | PISTON SPRING WASHER | 53 | 45076 | 2 | WASHER-3/4 X 1.5 X .13 |
| 14 | 2003005 | 1 | ARM-TRUNNION | 56 | 50005 | 1 | SEAL- .75 X 1.25 X .250 |
| 15 | 9008000-0126 | 1 | SEAL-LIP | 57 | 50016 | 1 | SHAFT-INPUT |
| 17 | 2000015 | 1 | GUIDE-SLOT | 58 | 44876 | 20 | BOLT, 3/8-24 X 2.5 |
| 18 | 50449 | 1 | SHAFT-MOTOR | 59 | 50002 | 2 | BDLT- 1/4-20 X 1.38 |
| 19 | 50552 | 1 | BEARING-THRUST 42X68X16 | 61 | 50042 | 1 | PIN- .5 OD X .43 ID X .750 |
| 23 | 70082 | 1 | BLOCK-CYLINDER ASS'Y. | 62 | 45007 | 1 | BREATHER |
| | | 1 | BLOCK-CYLINDER | 63 | 50034 | 1 | ARM-CONTROL |
| | | 7 | PISTON | 64 | 50018 | 1 | PUCK-DAMPENER |
| | | 7 | PISTON SPRING | 92 | 2003014 | 1 | SET SCREW |
| | | 7 | PISTON SPRING WASHER | 93 | 2003017 | 1 | SPRING, BLOCK |
| 24 | 45074 | 1 | ACTUATOR-BYPASS | 98 | 50137 | 1 | WASHER, BLOCK THRUST |
| 25 | 2003555 | 1 | KIT, CENTER SECTION | 99 | 50941 | 2 | SLEEVE BEARING |
| 26 | 70250 | 1 | PLATE, BYPASS | 105 | 50282 | 1 | SEAL, LIP 0.75X1.00X0.158 |
| | | 2 | CHECK PLUG ASSEMBLY | 134 | 44142 | 1 | FLANGE HEX SCREW, 5/16-24 X 1 |
| | | 1 | CENTER SECTION | 135 | 44101 | 1 | CASTLE NUT, 5/16-24 |
| | | 1 | DU BEARING | 136 | 50384 | 1 | COTTER PIN |
| | | 3 | BOLT, 3/8-24 X 2.5 | 137 | 50653 | 1 | EXTENSION SPRING |
| 27 | 45075 | 1 | BUSHING, 1.02 X 1.1 X .67 | 139 | 50431 | 1 | SCREW, 10-32 X 1/2 |
| 28 | 50007 | 1 | SEAL-LIP 26X42X8 | 140 | 50289 | 1 | COMPRESSION SPRING |
| 29 | 44872 | 2 | RING-RETAINING | 148 | 50928 | 1 | NUT, HEX 5/16-24 |
| 30 | 70680 | 1 | WASHER-28X35X1 | 149 | | 1 | SEALANT |
| 34 | 44964 | 1 | KIT, BYPASS PLATE | 149 | | 77oz | 20W-50 OIL |
| 35 | 50126 | 1 | OIL FILTER ELEMENT | 150 | 70312 | 1 | SEAL KIT |
| 36 | 44870 | 1 | ARM-BYPASS | 151 | 50416 | 1 | GREASE |
| 37 | 44094 | 1 | RING-RETAINING | | | | |
| 38 | 44891 | 2 | ARM-ACTUATING | | | | |
| | | | PIN-ACTUATING | | | | |