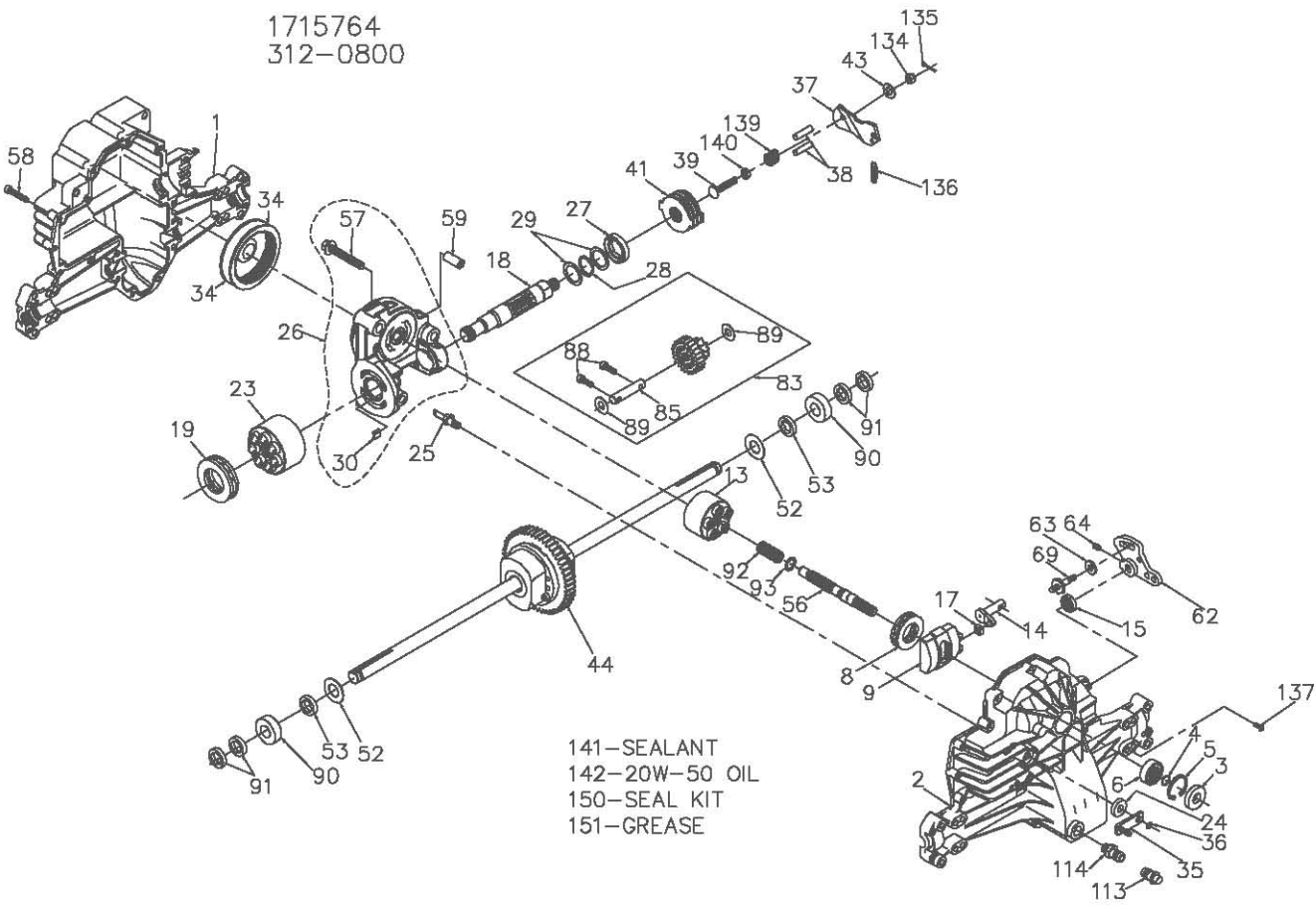


1715764
312-0800



1715764
312-0800

ITEM NO	HYDRO-GEAR PART NO	QTY	DESCRIPTION
1	50074RM	1	HOUSING, LOWER
2	70255	1	ASSEMBLY, UPPER HOUSING
3	9008000-0128	1	HOUSING, UPPER
4	2003016	1	BEARING-TRUNNION JOURNAL
5	2003052	1	SEAL-LIP
6	2003043	1	RING-WIRE RETAINING
8	50551	1	RING-RETAINING
9	2003087	1	BEARING-SHAFT BALL
13	70331	1	BEARING-THRUST 30X52X13
14	2003005	1	SWASHPLATE-VARIABLE
15	9008000-0128	1	BLOCK-CYLINDER ASS'Y.
17	2000015	1	BLOCK-CYLINDER
18	50449	1	PISTON
19	50552	5	PISTON SPRING
23	70082	5	PISTON SPRING WASHER
24	45074	1	ARM-TRUNNION
25	2003555	1	SEAL-LIP
26	70250	1	SEAL-LIP 10X25X7
27	45075	1	ACTUATOR-BYPASS
28	50007	1	KIT, CENTER SECTION
29	44872	2	PLATE, BYPASS
30	70680	1	CHECK PLUG ASSEMBLY
34	44964	1	CENTER SECTION
35	50128	1	DU BEARING
36	44870	3	BOLT-3/8-24 X 2.5
37	50130	1	BUSHING, 1.02 X 1.1 X .87
38	44891	1	SEAL-LIP 26X42XB
39	50316	1	RING-RETAINING
41	70135	1	WASHER-26X35X1
		1	KIT, BYPASS PLATE
		1	OIL FILTER ELEMENT
		1	ARM-BYPASS
		1	RING-RETAINING
		1	ARM-ACTUATING
		2	PIN-ACTUATING
		1	BOLT-5/16-18 X 1-3/4
		1	BRAKE ROTOR/STATOR KIT
		4	STATOR-BRAKE
		2	ROTOR-BRAKE

ITEM NO	HYDRO-GEAR PART NO	QTY	DESCRIPTION
43	44130	1	WASHER-7/16 X 7/8 X .060
44	70258	1	DIFFERENTIAL ASSEMBLY
		1	GEAR-DIFF. 50T
		2	DIFF. COVER
		2	GEAR-BEVEL 15T
		2	GEAR-PLANET 15T
		4	JAM NUT
		1	BOLT-1/4-20 X 1.38
		1	AXLE SHAFT, RH
		1	AXLE SHAFT, LH
		2	BEARING, BLOCK
		1	SHAFT
		1	HEX NUT
		6	SPRING WASHER
		1	SOCKET HEAD CAP SCREW
52	50152	2	WASHER-3/4 X 1.5 X .03
53	45076	2	SEAL-.75 X 1.25 X .250
56	50005	1	SHAFT-INPUT
57	50016	1	BOLT, 3/8-24 X 2.5
58	44876	21	BOLT-1/4-20 X 1.38
59	50002	2	PIN-.5 OD X .43 ID X .750
62	45007	1	ARM-CONTROL
63	50281	1	PUCK-DAMPENER
64	50018	1	SET SCREW
69	50426	1	5/16-24 STUD
83	70132	1	JACK SHAFT/PINION GEAR ASSEMBLY
		1	23T GEAR
		1	10T PINION
		1	JACK SHAFT
		2	CAPSCREW 6M X 20 LG
		1	WASHER 7/16 X 1 X .5
85	50559	2	JACK SHAFT
88	50154	2	CAPSCREW 6M X 20 LG
89	50132	2	WASHER 7/16 X 1 X .5
90	44121	2	BALL BEARING
91	50941	4	SEAL, LIP .75 X 1.00 X .158
92	2003014	1	SPRING, BLOCK
93	2003017	1	WASHER, BLOCK THRUST
113	70109	1	CAP-VENT ASSEMBLY
		1	CAP-POPPET VALVE
		1	PLASTIC VENT
114	70110	1	FITTING-O RING ASSEMBLY
		1	O-RING
		1	PLASTIC HOSE FITTING
134	44142	1	CASTLE NUT, 5/16-24
135	44101	1	COTTER PIN
136	50384	1	EXTENSION SPRING
137	50853	1	SCREW, 10-32 X 1/2
139	50431	1	COMPRESSION SPRING
140	50269	1	NUT, HEX 5/16-24
141	50928	1	SEALANT
142		79oz	20W-50 OIL
150	70312	1	SEAL KIT
151	50416	1	GREASE