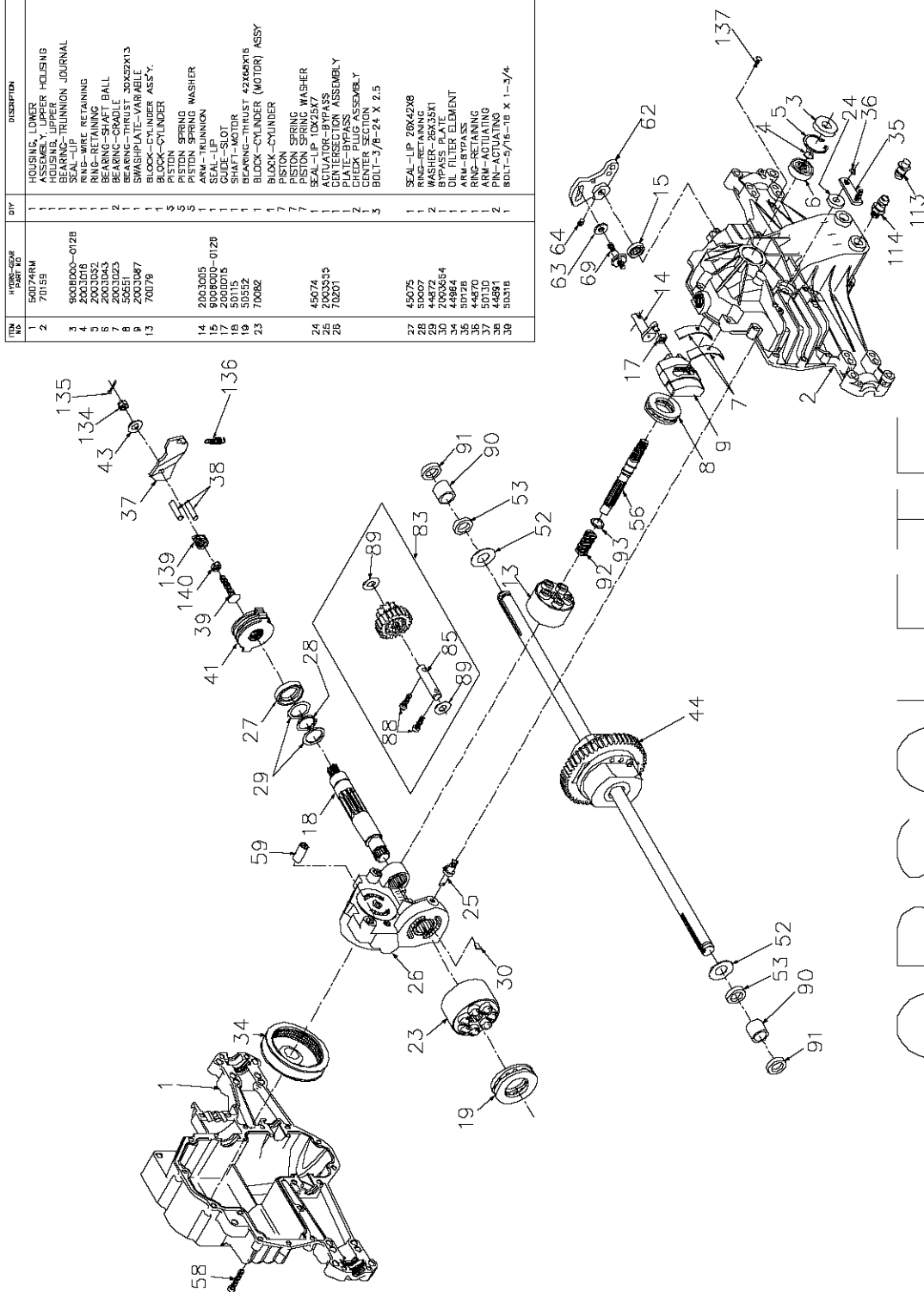


| QTY | PN | PNF | PNF-CD | DESCRIPTION |
|-----|--------------|-----|--------|-----------------------------|
| 1 | 500748M | | | HOUSING, LOWER |
| 1 | 70159 | | | ASSEMBLY, UPPER HOUSING |
| 1 | 900B000-0128 | | | SEAL-LIP |
| 1 | 2003016 | | | SEAL-LIP |
| 1 | 2003032 | | | SEAL-LIP |
| 1 | 2003033 | | | SEAL-LIP |
| 1 | 2003035 | | | SEAL-LIP |
| 2 | 50551 | | | BEARING-THRUST 30X42X13 |
| 1 | 2003047 | | | SWASHPLATE-VARIABLE |
| 1 | 70079 | | | PISTON |
| 5 | | | | PISTON SPRING |
| 5 | | | | PISTON SPRING WASHER |
| 14 | 2003035 | | | ARM-THUMBON |
| 1 | 2003035 | | | ARM-THUMBON |
| 17 | 2000116 | | | GUIDE-SLOT |
| 1 | 50115 | | | SHAFT-MOTOR |
| 1 | 50552 | | | BEARING-THRUST 42X60X18 |
| 23 | 70082 | | | BLOCK-CYLINDER (MOTOR) ASSY |
| 1 | | | | PISTON |
| 7 | | | | PISTON SPRING |
| 7 | | | | PISTON SPRING WASHER |
| 24 | 45074 | | | SEAL-LIP 10X25X7 |
| 25 | 7003335 | | | PLATE-BYPASS |
| 26 | 70631 | | | PLATE-BYPASS ASSEMBLY |
| 1 | | | | CHECK PLUG ASSEMBLY |
| 2 | | | | BEARING-THRUST 1 1/4 X 2.5 |
| 3 | | | | BOLT-3/8-24 X 2.5 |
| 27 | 45075 | | | SEAL-LIP 20X42X8 |
| 28 | 44872 | | | WASHER-20X45X1 |
| 29 | 2003654 | | | BYPASS PLATE |
| 30 | 2003654 | | | BYPASS PLATE |
| 34 | 44864 | | | DL FILTER ELEMENT |
| 35 | 50128 | | | ARM-REPASS |
| 36 | 50130 | | | ARM-REPASS |
| 37 | 44691 | | | ARM-ACTUATING |
| 38 | 44691 | | | ARM-ACTUATING |
| 39 | 50318 | | | BOLT-5/16-18 X 1-3/4 |

| QTY | PN | PNF | PNF-CD | DESCRIPTION |
|-----|---------|-----|--------|---------------------------------|
| 4 | 70135 | | | BRAKE ROTOR/STATOR KIT |
| 4 | | | | STATOR-BRAKE |
| 2 | 44130 | | | WASHER-7/16 X 7/8 X .080 |
| 2 | 70130 | | | ROTOR-BRAKE |
| 1 | | | | DIFFERENTIAL ASSEMBLY |
| 1 | | | | DIFF. COVER |
| 2 | | | | GEAR-BEVEL 1ST |
| 2 | | | | GEAR-PLANET 1ST |
| 4 | | | | BOLT 1/4-20 X 1.38 |
| 1 | | | | AXLE SHAFT, RH |
| 1 | | | | AXLE SHAFT, LH |
| 2 | | | | BEARING, BLOCK |
| 1 | | | | BEARING, BLOCK |
| 2 | 50142 | | | WASHER-3/4 X 1.15 X .03 |
| 2 | 45076 | | | SEAL-.75 X 1.25 X .250 |
| 2 | 50005 | | | SHAFT-INPUT |
| 1 | 44876 | | | BOLT 3/4-20 X 1.38 |
| 21 | 45037 | | | BOLT 1/4-20 X 1.38 |
| 7 | 45037 | | | ARM-CONTROL .45 ID X .750 |
| 1 | 50018 | | | PLUCK-DAMPENER |
| 1 | 50018 | | | PLUCK-DAMPENER |
| 1 | 70152 | | | SET SCREW |
| 1 | 70152 | | | SET SCREW |
| 1 | 70152 | | | JACK SHAFT/PINION GEAR ASSEMBLY |
| 1 | | | | 23T GEAR |
| 1 | | | | TOT PINION |
| 1 | | | | JACK SHAFT |
| 1 | | | | JACK SHAFT |
| 2 | 50559 | | | WASHER 9/16 X 20 LG |
| 2 | 50194 | | | WASHER 9/16 X 20 LG |
| 2 | 50118 | | | WASHER 9/16 X 1.5 |
| 2 | 50118 | | | SLEEVE BEARING |
| 2 | 50118 | | | SLEEVE BEARING |
| 2 | 50118 | | | SEAL-WFER |
| 2 | 2003014 | | | SPRING, BLOCK |
| 1 | 2003017 | | | WASHER, BLOCK THRUST |
| 110 | 70104 | | | CLIP-PORRET VALVE |
| 1 | | | | PLASTIC VENT |
| 1 | | | | FITTING-D RING ASSEMBLY |
| 1 | 70110 | | | FITTING-D RING ASSEMBLY |
| 1 | | | | PLASTIC HOSE FITTING |
| 1 | 44142 | | | CASTLE NUT, 5/16-24 |
| 1 | 44101 | | | COTLER PIN |
| 1 | 50381 | | | EXTENSION SPRING |
| 1 | 50381 | | | EXTENSION SPRING |
| 1 | 50431 | | | COMPRESSION SPRING |
| 1 | 50431 | | | COMPRESSION SPRING |
| 1 | 50289 | | | NUT, HEX 5/16-24 |
| 1 | 50289 | | | NUT, HEX 5/16-24 |



TRANSAXLE MODEL # 311-0750 | 1708812 | SIMPLICITY

MODEL: 311-0750

 PART: 1708812

 DATE: 08/01/04

 REV: 1

 DRAWN BY: J. S.

 CHECKED BY: J. S.

 APPROVED BY: J. S.

 PARTS SERVICE

 1708812

OBSOLETE