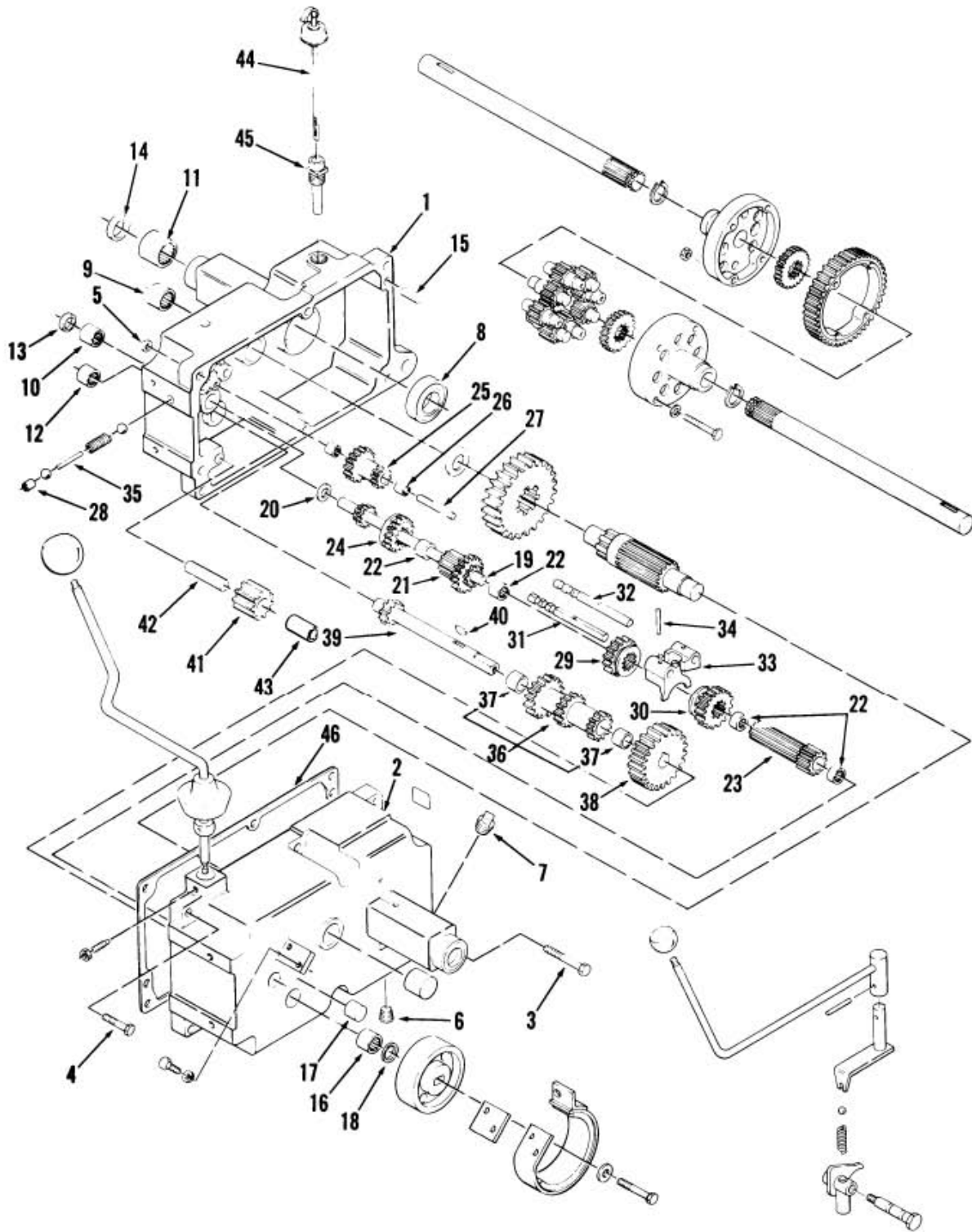




# MASTER PARTS VIEWER

©2003 The Toro Company

Model: 91-16B802 Year: 1979 Serial Range: None - None



**Mechanical Transmission-8 Speed**

No.	Part	Qty.	No.	Part	Qty.
	103916 Assembly 8-Speed Transmission	1	24	7205 GEAR-SLIDING	1
			25	7206 Gear	1

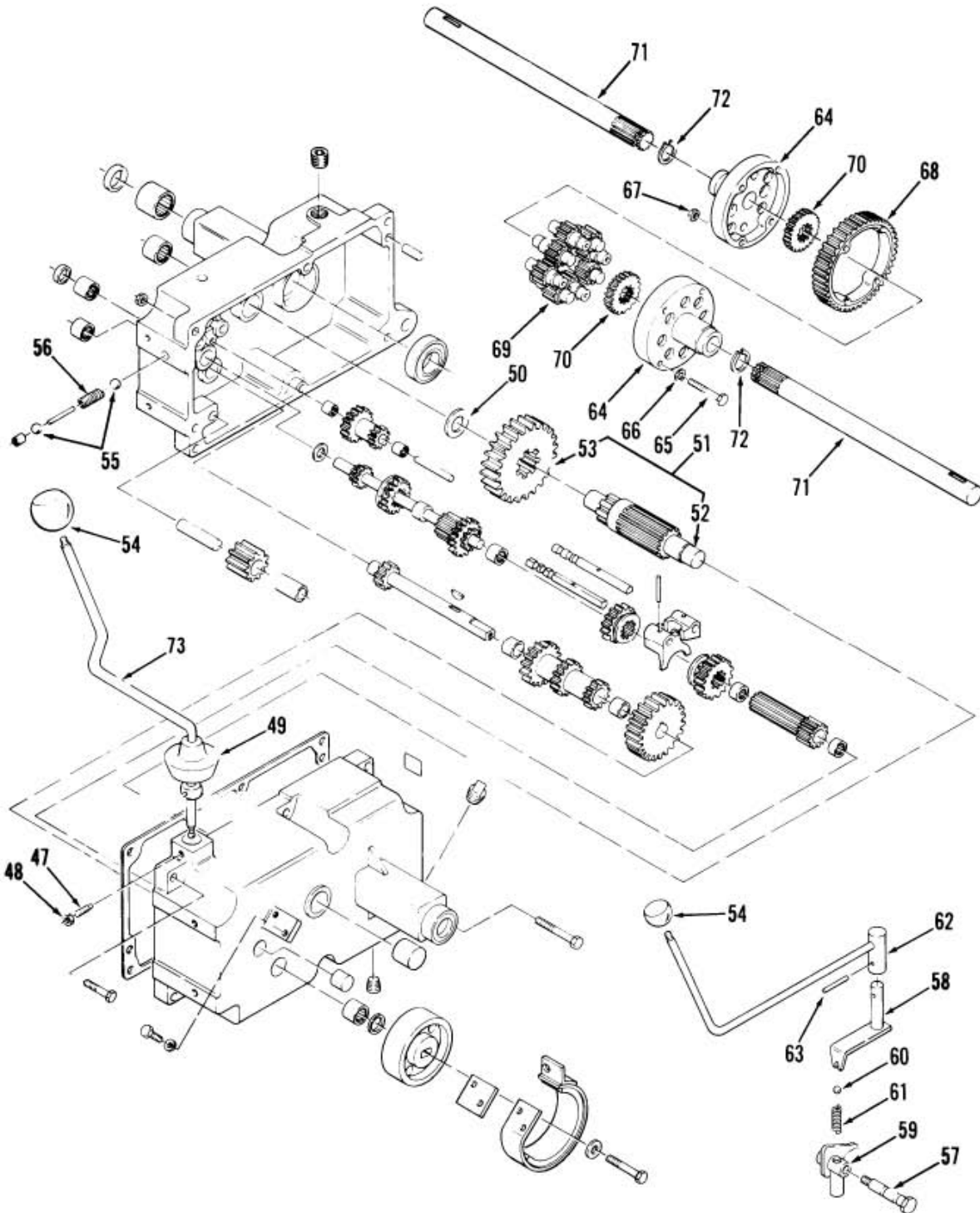
1	8163 Case RH	1	26	7207 BEARING-NEEDLE	2
2	6941 Case L.H.	1	27	7208 GEAR-SHAFT REDUCTION	1
3	908043 HHCS	1	28	1243 CUP-PLUG	1
4	908038 Bolt	5	29	5173 GEAR-HI AND 2ND	1
5	915113 Nut	6	30	5174 GEAR-LOW AND REVERSE	1
6	943460 PLUG 1/4 PIPE ALLEN	1	31	5615 RAIL-SHIFT	1
7	943420 Plug	1	32	5616 RAIL-REAR SHIFT	1
8	1533 BALL BRG 1 1/2 I.D.	2	33	3503 FORK-SHIFT	2
9	1532 BEARING-NEEDLE	2	34	933156 PIN-ROLL	2
10	1542 BEARING-NEEDLE	1	35	5614 PIN-SHIFT	1
11	9416 BEARING	2	36	7269 GEAR-CLUSTER	1
12	1529 BEARING-NEEDLE	1	37	1504 BUSHING-BRONZE	2
13	100442 SEAL-OIL	1	38	3527 GEAR-CLUSTER SHAFT	1
14	100443 SEAL-OIL	2	39	9840 Cluster Shaft	1
15	3915 PIN-DOWEL	2	40	937014 Key	1
16	1523 BEARING-NEEDLE	1	41	4204 GEAR/BUSHING ASM- REVERSE IDLER	1
17	1531 Bearing Needle	1	42	3909 PIN-DIFFERENTIAL	1
18	100441 SEAL-OIL	1	43	1516 BUSHING	1
19	7201 SHAFT-INPUT	1	44	106447 ASSY-DIPSTICK	1
20	7418 WASHER-THR	1	45	106448 NIPPLE-TRANS FILL	1
21	7204 GEAR	1	46	3912 GASKET-TRANSMISSION	1
22	1518 BEARING-NEEDLE	4			
23	5175 GEAR	1			



# MASTER PARTS VIEWER

©2003 The Toro Company

**Model: 91-16B802 Year: 1979 Serial Range: None - None**



### Mechanical Transmission-8 Speed

No.	Part	Qty.	No.	Part	Qty.
47	1239 SETSCREW	1	61	106030 SPRING-SHIFT STOP	1
48	915111 Nut	1	62	106366 Shift Lever HI-Low Range	1
49	3577 COVER-DUST	1	63	933184 PIN-SPIROL	1

50	9547 WASHER-THRUST	1	64	105060 DIFFERENTIAL END CAP	2
51	102974 GEAR ASM	1	65	911423 BOLT-HEX	4
52	101625 PINION SHAFT	1	66	107374 WASHER	4
53	101626 GEAR	1	67	915113 Nut	4
54	102871 SHIFT KNOB	2	68	105061 GEAR-DIFFERENTIAL RING, 43T	1
55	3517 BALL-DETENT	2	69	101623 GEAR-PINION, 11T	8
56	106030 SPRING-SHIFT STOP	1	70	101889 GEAR-AXLE DIFFERENTIAL	2
57	7213 BOLT-DETENT	1	71	105875 AXLE-REAR	2
58	7214 SHIFT ASM	1	72	105876 RING-SNAP	2
59	7209 Shift Fork	1	73	10759S5 Gear Shift Lever	1
60	3517 BALL-DETENT	1			

## **Uni-drive Transmission Model 103916**

*Illustrated parts list page 1 of this file*

*Item #8 1533 ball bearing 1-1/2" ID*

Because of a parts shortage some models were built using needle bearing #8048 and inner bearing race #8052.

The replacement of the inner axle bearing is described in the included service bulletin #369. The above bearing numbers are not in the bulletin.

GW

Wheel Horse Service Bulletins 1961 - 1990: #369 Issued: March 1984  
**Transaxle Case and Bearing 1984 GT and C-Series**

[Previous](#) [Table of Contents](#) [Next](#)

Vin's A1-11B801 (GT-1100), A1-16B801 (GT-1600),

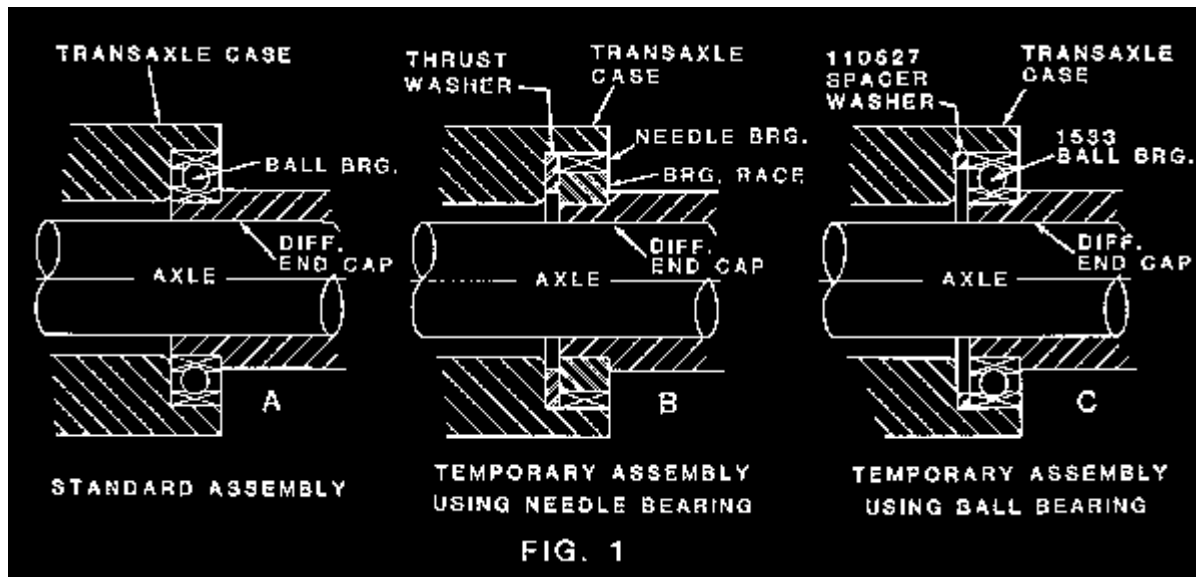
**A1-18BE01 (GT-1800), 11-10K802 (C-105), 11-12K802 (C-125), 11-14KE01**

**(C-145), 11-16K801 (C-165), 11-17KE01 (C-175)**

To All Dealers:

1. Subject:

1.1 Assembly of transaxle case and bearing using temporary transaxle case, thrust washer and bearing was necessary to continue factory production on some 1984 C and GT-Series tractors. Figure 1 illustrates two types of temporary assemblies used. Factory production has returned to standard assembly as of bulletin date.



2. Service Action:

2.1 When repair parts are required, determine which type of assembly was used (Fig. 1).

A. If standard assembly was used refer to tractor parts manual.

B. If temporary assembly using needle bearings was used, replace bearing by removing thrust washer and needle bearing from transaxle case. Remove bearing race from differential end cap. Discard needle bearing, bearing race and thrust washer. Use replacement P/N 110527 Spacer Washer and 1533 Ball Bearing. CAUTION: DO NOT use old thrust washer with new

ball bearing. If transaxle case is to be replaced, refer to tractor parts manual. Spacer Washer P/N 110527 is not used with replacement case.

C. If temporary assembly using ball bearings was used, replace bearing or spacer washer with both P/N 1533 Ball Bearing and 110527 Spacer Washer.

If transaxle case is to be replaced, refer to tractor parts manual. Spacer Washer P/N 110527 is not used with replacement case.