

PARTS LIST AND INSTRUCTIONS

DISC TURNING BRAKES

FACTORY ORDER NUMBER 8-1903

for

1975 D SERIES TRACTORS

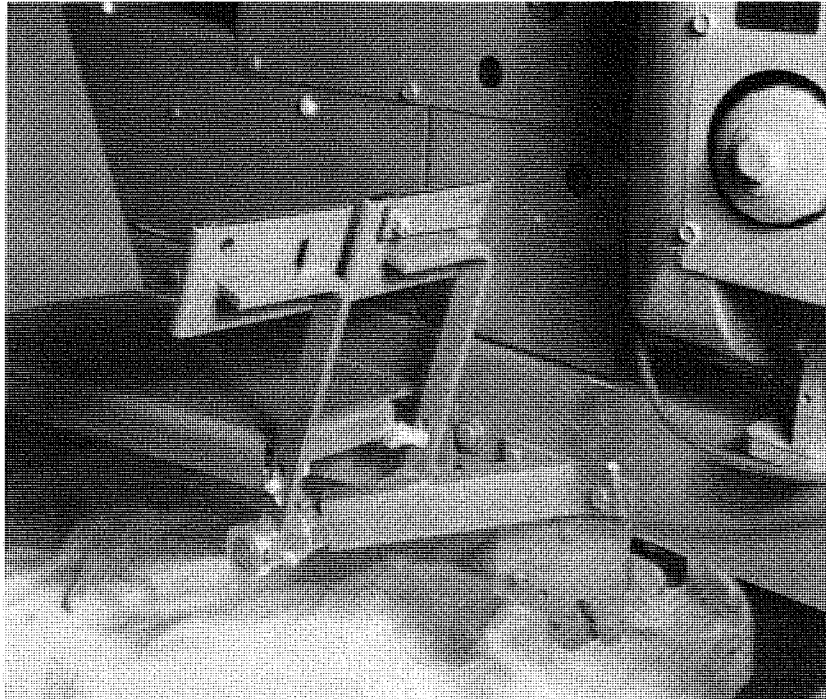


FIGURE 1

PIVOT SHAFT AND PEDALS

Install the left foot pedal on the pivot shaft. Next, insert the rod assembly (27) through the lower hole in the pedal in the same direction as shown in the parts drawing. Use a washer and cotter pin to retain the rod on the pedal.

Remove the RH foot rest support bracket and in its place bolt on the pedal pivot shaft assembly (10) using the same nuts and bolts.

The upper arm of the support bracket has a hole matching a hole in the frame rail. Attach with a $\frac{3}{8}$ nut and a $\frac{3}{8}$ x 1 bolt.

Remove any paint from the shaft. Fasten the bar (19) to the LH foot pedal (13) with the hardware indicated in the parts drawing.

Remove the bolt from the rear part of the midlift pivot mounting block located under the footrest. Also remove the front bolt from the Tach-a-matic hitch plate.

Install the brace assembly (16), fastening it to the frame with a $\frac{3}{8}$ x $1\frac{1}{4}$ bolt and nut as shown in Fig. 1. Secure the other end to the midlift pivot mounting block with the bolt removed previously.

Add the washers (41), the RH foot pedal (14) and the collar (17) to the shaft and tighten (see Fig. 1). Install grease fittings in the pedals and lubricate with a general purpose grease.

TRANSFER SHAFT

Place an arm assembly (32) on a bench. Slide the shaft (30) into the arm assembly and secure with a roll pin (33). Install a bearing (31) and a support bracket (39) on the shaft.

Install the other support bracket, and bearing, on the shaft. Insert shaft in the other arm assembly and secure with the remaining roll pin.

Bolt this entire assembly to the frame through the two holes on each side in front of the transaxle. Use the hardware indicated in parts drawing. Install the rod (27) on the R.H. arm (32) using washer and cotter pin.

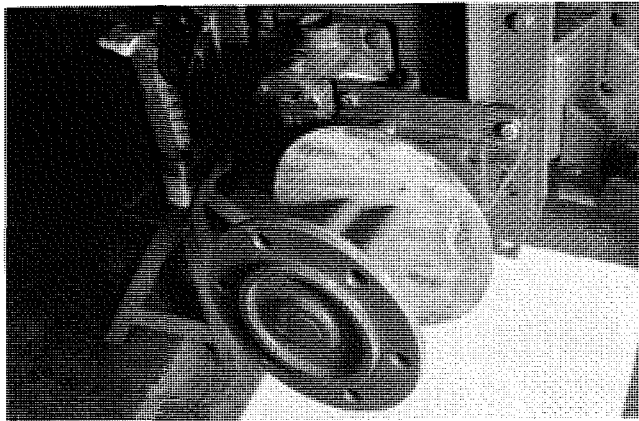


FIGURE 2

CALIPERS

Remove each wheel hub. Remove both axle cover tubes and discard. Clean discs with solvent prior to installation. Bolt the discs (35) to each hub (see Fig. 2). Reinstall the hubs, do not tighten.

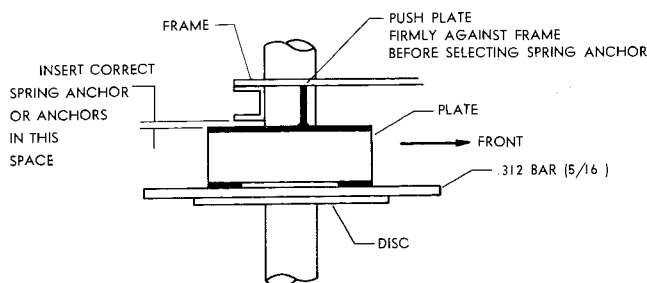


FIGURE 3

Place a piece of $\frac{5}{16}$ " bar stock (at least 8" long) between the disc (35) and the plate (23). See Fig. 4. Pull the rear of the plate flat against the bar to line the plate up with the disc. Clamp together then push firmly against the frame (see illustration). Select a spring anchor, or combination of spring anchors (37, 42, 43) with a total thickness of $\frac{1}{32}$ " to $\frac{1}{16}$ " less than the space (see illustration), and insert between the plate and the tractor hitch mounting angle. Fasten with a $\frac{3}{8}$ -16 x $1\frac{1}{4}$ bolt and $\frac{3}{8}$ nut. Then tighten.

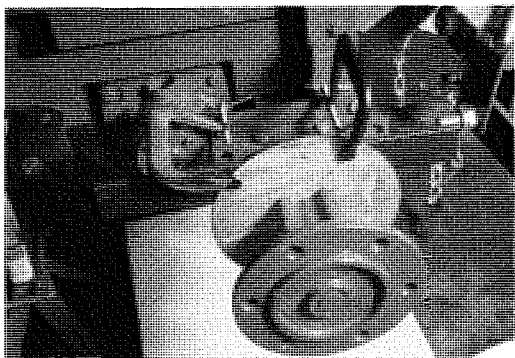


FIGURE 4

NOTE: Correct alignment of disc and plate is necessary for proper operation of the brakes.

Complete the mounting bracket installation by adding a link (44) and two bolts* and nuts (12 and 25).

***IMPORTANT:** These bolts must be tightened to a torque of 30 Ft. lbs. **Loose bolts may cause misalignment and rapid brake wear.**

Lower the LH caliper unit over the disc and fasten to the mounting bracket with two $\frac{1}{2}$ x $1\frac{1}{2}$ shoulder bolts (4). (See Fig. 5). If the brakes are too tight, minor adjustments can be made by sliding the hub in or out. Then tighten the hub on the axle.

Install rod assembly (34) on the left side of the tractor. Fasten to the arm assembly (32) with a cotter pin (9) and washer (8).

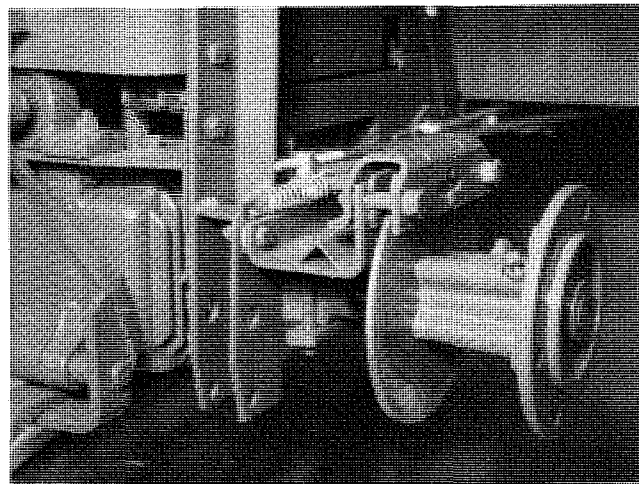


FIGURE 5

Thread a trunnion (7) on the rod end. Drop the end of the trunnion through the lever assembly (2) and fasten with the same hardware as that used on the rod assembly (34).

Attach the remaining rod assembly (6) to the right brake pedal and make an identical installation of hardware and trunnion as on the left side.

Attach springs as shown in Fig. 5.

ADJUSTMENT

Thread each rod (6 and 34) through their respective trunnions (7) until there is approximately 1" of travel at the top of each pedal.

USAGE

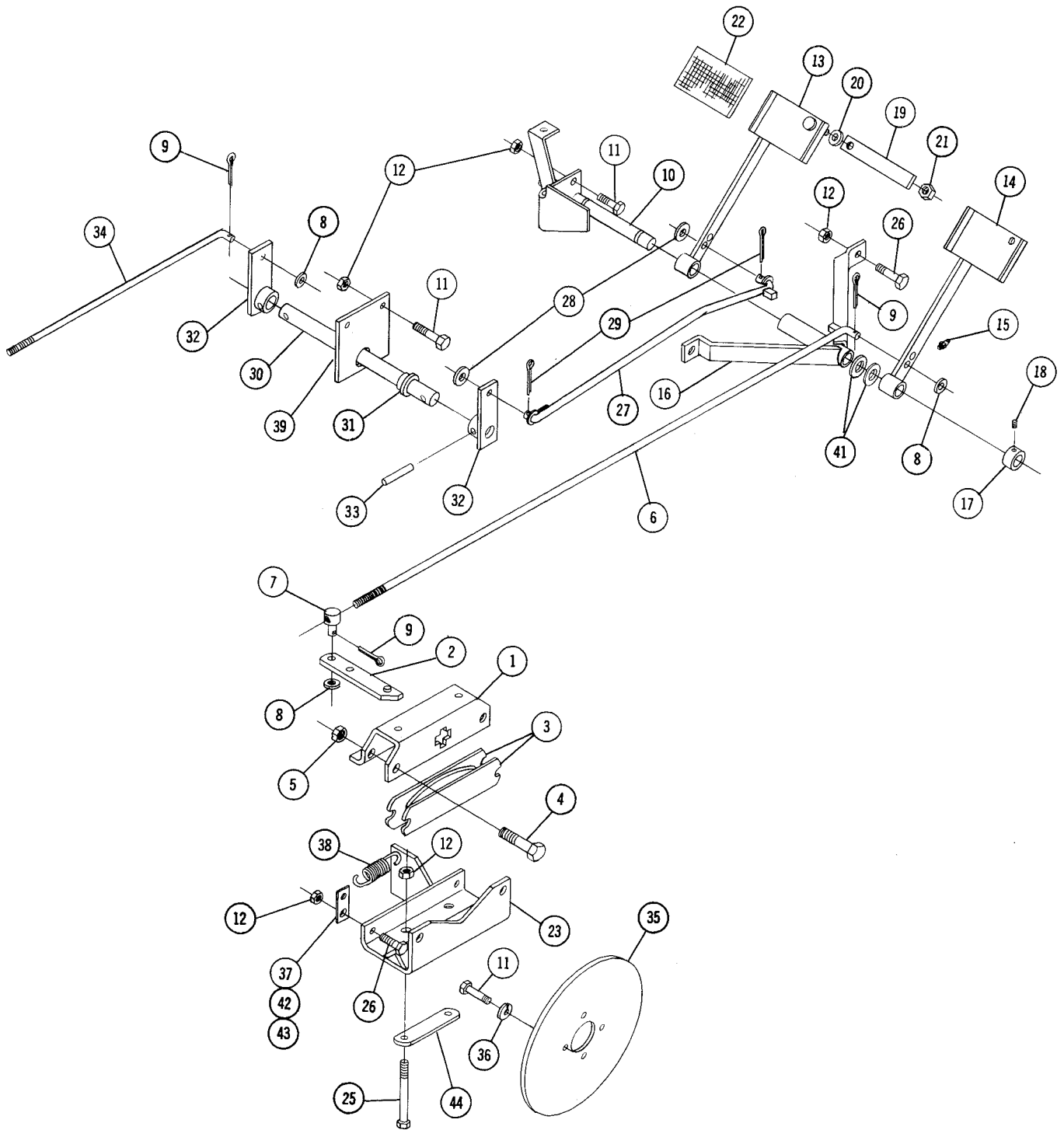
Both the left pedal and the right pedal may be used independently.

⚠ CAUTION ⚠

When either pedal is used, extreme caution must be exercised when turning to avoid accidentally tipping the tractor over.

To use both brakes, turn the bar (19) so it engages the right pedal. When applying both brakes place foot so that pressure is approximately equal on both pedals.

NOTE: Never use as a stopping brake without using the neutral pedal or the speed control lever to place the transmission in neutral.



PARTS DRAWING

PARTS LIST — DISC TURNING BRAKES

FACTORY ORDER NUMBER 8-1903

When ordering parts always list Part No. and Description.

Parts available only through Authorized Dealers.

(Specifications subject to change without notice.)

ITEM NO.	PART NO.	DESCRIPTION	NO. REQ'D.
1	104795	Secondary Bracket	2
2	104800	Lever Assembly	2
3	104798	Plate Assembly	4
4	104799	Bolt — Shoulder $\frac{1}{2}$ x $1\frac{1}{2}$	4
5	104378	Nut — Hex $\frac{3}{8}$ -16 Lock	4
6	102230	Rod Assembly	1
7	1861	Trunnion	2
8	920009	Washer — $\frac{3}{8}$ SAE	2
9	932008	Cotter Pin	2
10	104801	Pedal Pivot Assembly	1
11	908034	Bolt — Hex $\frac{3}{8}$ -16 x 1	15
12	915663	Nut — Hex $\frac{3}{8}$ -16 E.S.	4
13	104805	Pedal — L. H.	1
14	104804	Pedal — R. H.	1
15	7073	Grease Fitting	2
16	104707	Brace Assembly	1
17	8192	Collar	1
18	909849	Set Screw $\frac{1}{4}$ -20 x $\frac{5}{16}$	1
19	102259	Bar	1
20	MW-4405	Spring Washer	1
21	915663	Nut — Hex $\frac{3}{8}$ -16 E.S.	11
22	103097	Brake Pedal Pad	2
23	104856	Brake Mounting Plate, RH	1
	104857	Brake Mounting Plate, LH	1
25	908043	Bolt — Hex $\frac{3}{8}$ -16 x $3\frac{1}{2}$	4
26	908035	Bolt — Hex $\frac{3}{8}$ -16 x $1\frac{1}{4}$	3
27	104980	Rod Assembly	1
28	920009	Washer — $\frac{3}{8}$ SAE	4
29	932008	Cotter Pin	4
30	104789	Shaft	1
31	103007	Bearing	2
32	104790	Arm Assembly	2
33	933229	Spirol Pin — $\frac{5}{16}$ Dia. x $1\frac{1}{4}$	2
34	102244	Rod Assembly	1
35	104806	Disc	2
36	920083	Lockwasher — $\frac{3}{8}$	8
37	104383	Spring Anchor Plate (.164)	2
38	103125	Spring	2
39	104793	Support Bracket	2
41	920239	Washer	2
42	100047	Spring Anchor Plate (.134)	2
43	7606	Spring Anchor Plate (.075)	2
44	3697	Link	2

