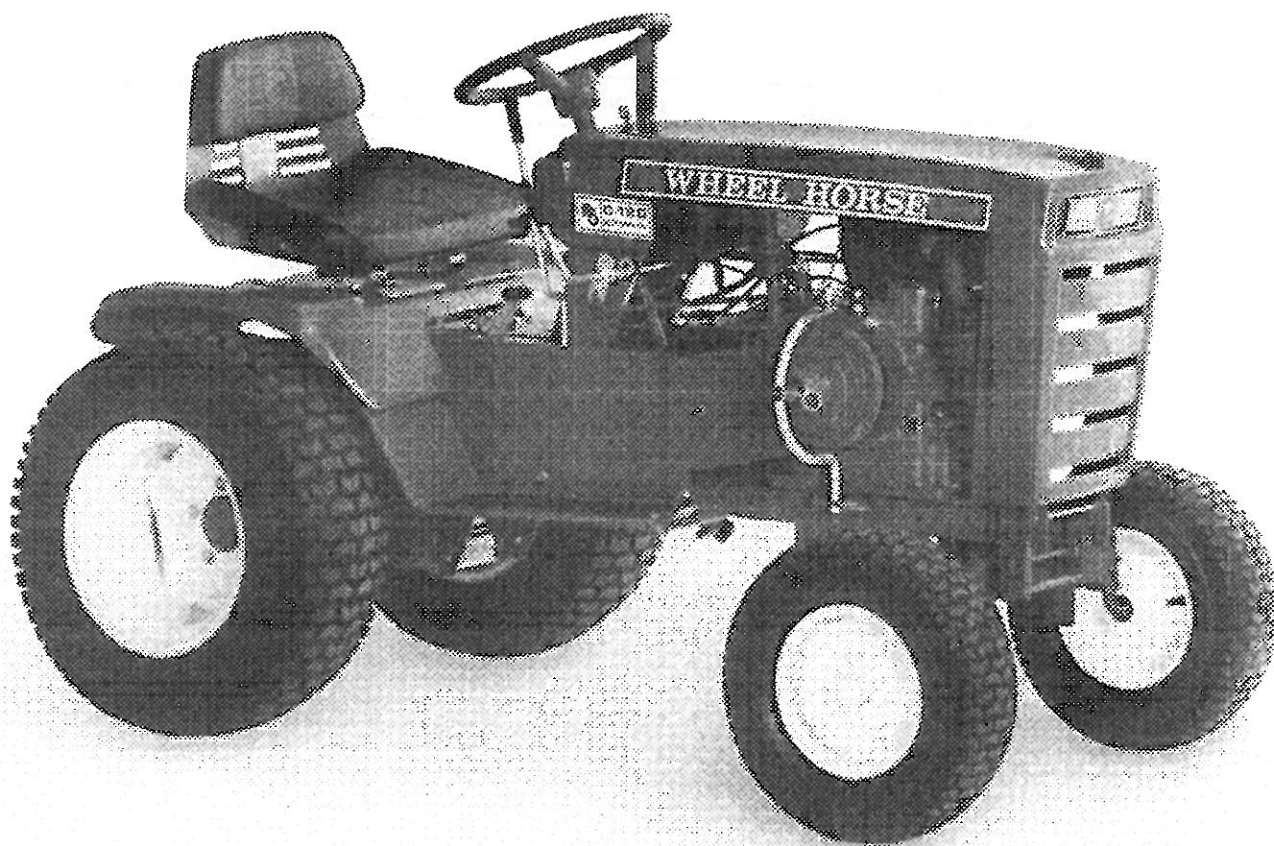




1974 PARTS MANUAL

for

AUTOMATIC TRACTORS



WHEEL HORSE

lawn & garden tractors

MODEL NUMBERS

Model and serial numbers are necessary to order parts. Tractor numbers are on a plate attached to the left side of the hood. Engine numbers are on a plate attached to the engine shroud.

TO ORDER PARTS

1. Enter model and serial numbers.

Tractor _____

Engine _____

2. Locate the desired part in the illustration and note its item number.
3. Locate the item number in the parts list. Order by both **part number and description.**

ORDER ALL PARTS THROUGH YOUR LOCAL AUTHORIZED WHEEL HORSE DEALER.

TRACTOR	MODEL	ENGINE MODEL	TRANSMISSION	HORSEPOWER
B-100	1-0510	K241S-46636D	5090	10
C-120	1-0485	K301S-47421D	5088	12
C-120	1-0490	K301S-47421D	103903	12
C-120	1-0495	HH-120-120180D	103903	12
C-160	1-0480	K341S-71113A	5088	16

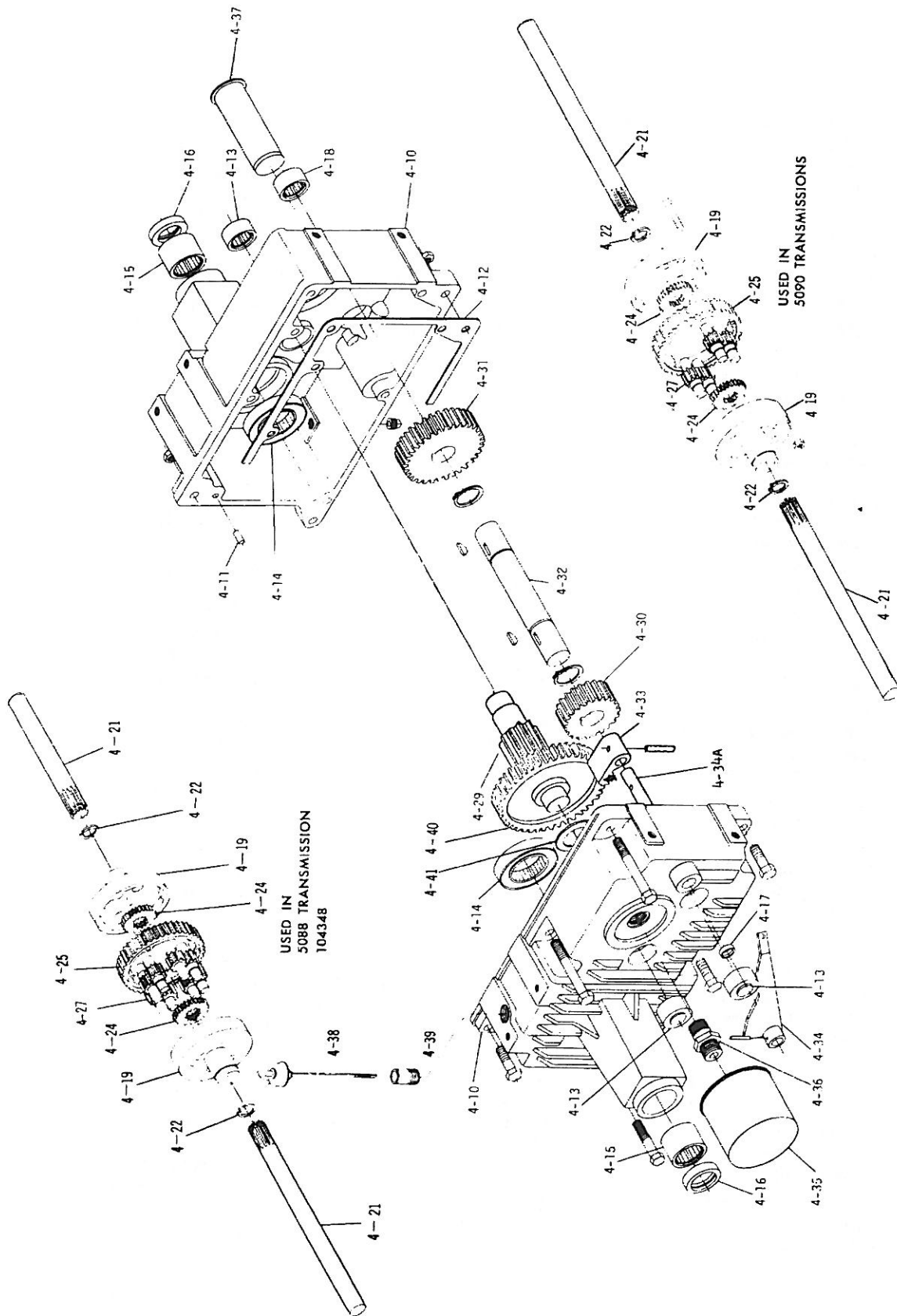
WHEEL HORSE SPARE PARTS WARRANTY

Wheel-Horse Products, Inc. guarantees both its new and its rebuilt spare parts as well as its assemblies against manufacturing defects for 90 days from the date of purchase. Any new or rebuilt spare parts or any assembly manufactured by Wheel Horse will be replaced free if found to be defective while in normal usage during the 90 days following the date of purchase. If the spare part or assembly is warranty replacement, our guarantee applies for the duration of the original warranty period or 90 days, whichever is longer.

Drive belts are also guaranteed for 90 days from the date of purchase. Batteries and spare parts for engines are guaranteed separately by their manufacturer. This guarantee covers the replacement of defective parts only. All labor, transportation costs and dealer service charges are the responsibility of the owner. All claims must be handled through an authorized Wheel Horse dealer.

Wheel-Horse Products, Inc. reserves the right to change spare part specifications and/or to delete or substitute spare parts at any time without notice and without incurring obligation.

TRANSMISSION - HYDROSTATIC



ITEM NO.	PART NO.	DESCRIPTION	NO. REQ'D.		
			5088	103903	5090
1.000 FRAME ASSEMBLY (PLATE 1.1)					
1-01	103969	Frame Ass'y. — (B-100)		1	
	102563	Frame Ass'y. — C-120, C-160		1	
	908032-4	Bolt, $\frac{3}{8}$ -16 x $\frac{3}{4}$ Trans. Upper		2	
	920083-4	Lockwasher, $\frac{3}{8}$ Upper Bolts		2	
	908033-4	Bolt, $\frac{3}{8}$ -16 x $\frac{1}{8}$ Trans. Lw.		2	
	900063-9	Bolt, Carriage $\frac{3}{8}$ -16 x 1 Ft. Hitch		3	
	915113-6	Nut, Eslok $\frac{3}{8}$ -16		3	
4.010 TRANSAXLE (PLATE 4.3)					
4-10	5956	Case RH	0	0	1
	103636	Case RH	1	1	0
	102987	Case LH	0	0	1
	102617	Case LH	1	1	0
	943460	Plug $\frac{1}{4}$ Pipe Oil Drain	1	1	1
	908143-4	Bolt $\frac{3}{8}$ -16 x 5 Top Center & Front	2	2	2
	908043-4	Bolt $\frac{3}{8}$ -16 x $3\frac{1}{2}$ Lower Rear	1	1	1
	908040-4	Bolt $\frac{3}{8}$ -16 x $2\frac{1}{2}$ Lower Center & Front	2	2	2
	908039-4	Bolt $\frac{3}{8}$ -16 x $2\frac{1}{4}$ Top Rear	1	1	1
	920009-4	Washer, $\frac{3}{8}$ SAE	1	1	1
	915113-6	Nut, $\frac{3}{8}$ -16	6	6	6
	908036-6	Bolt — Hex $\frac{3}{8}$ -16 x $1\frac{1}{2}$ Nylok	2	2	2
4-11	3915	Pin — Dowel	2	2	2
4-12	5999	Gasket — Case	1	1	1
4-13	1532	Bearing — Needle 1" I.D.	3	3	3
4-14	1533	Bearing — Ball $1\frac{1}{2}$ " I.D.	2	2	1
4-15	1526	Bearing — Needle $1\frac{1}{8}$ " I.D.	2	2	0
	1528	Bearing — Needle 1"	0	0	2
4-16	6449	Seal — $1\frac{1}{8}$ " I.D.	2	2	0
	100607	Seal — 1" I.D.	0	0	2
4-17	5959	Seal — Brake Shaft $\frac{1}{2}$ " I.D.	1	1	1
4-18	8049	Bearing — Needle 1"	1	1	1
4-19	101621	Case — Differential	2	2	0
	101053	Case — Differential	0	0	2
	908146	Bolt — Hex $\frac{5}{16}$ -18 x $3\frac{1}{4}$	0	0	4
	911418	Bolt — Hex $\frac{5}{16}$ -18 x $3\frac{1}{2}$	4	4	0
	915662-4	Nut — $\frac{5}{16}$ -18	4	4	4
4-21	102764	Axle	2	2	0
	5961	Axle	0	0	2
4-22	7169	Snap Ring — H.D. Ext.	2	2	0
	7939	Snap Ring	0	0	2
4-24	101889	Gear — Axle	2	2	0
	3908	Gear — Axle	0	0	2
4-25	3906	Gear — Diff. Ring	0	0	1
	101622	Gear — Diff. Ring	1	1	0
4-27	101623	Gear — Diff.	8	8	4
4-29	103395	Gear — Pinion — 11T	1	1	1
4-30	102782	Gear — 24T	1	1	1
4-31	101885	Gear — 44T	1	1	1
4-32	5965	Shaft — 1"	1	1	1
	936131	Snap Ring — 1"	2	2	2
	937014	Key #9 Woodruff	2	2	2

ITEM NO.	PART NO.	DESCRIPTION	NO. REQ'D.		
			5088	103903	5090
4-33	103888	Pawl	1	1	1
4-34	103496	Brake Lever	1	1	1
4-34A	104348	Shaft	1	1	1
	933152	Roll Pin $\frac{1}{8}$ x $\frac{3}{4}$	1	1	1
	933156	Spirol Pin $\frac{1}{8}$ x 1	1	1	1
4-35	102819	Filter Ass'y.	1	1	1
4-36	5991	Fitting	1	1	1
4-37	5992	Strainer	1	1	1
4-38	101847	Dipstick Ass'y.	1	1	1
4-39	102273	Nipple $\frac{1}{2}$ x $3\frac{1}{2}$	1	1	1
4-40	102781	Gear — 42T	1	1	1
4-41	9547	Washer — Thrust	1	1	1

HYDROSTATIC TRANSMISSION PISTON-PISTON TYPE (PLATE 4.5)

4-99	102866	Hydrogear Ass'y.	0	1	1
4-100	7752	Plug	1	0	0
4-101	973310	O — Ring	3	3	3
4-102	943462	Plug	0	1	1
4-103	103467	Plug — Hex $\frac{5}{16}$ -18	0	2	2
4-104	103456	Ball	3	2	2
4-105	103455	Spring — Chg. Rel. Valve	1	1	1
4-106	103645	Plug	1	1	1
4-107	7756	Cone	1	1	1
4-108	103460	Valve — By Pass	1	1	1
4-109	103457	Spring	2	2	2
4-110	103458	Plug — Check Valve	2	2	2
4-111	971012	O — Ring	1	1	1
4-112	103459	Ring — Back Up	1	1	1
4-113	103461	Seal — Lip	2	2	2
4-114	103462	Washer — Trunnion	2	2	2
4-115	103463	Ring — Retaining	2	2	2
4-116	7877	Seal	1	1	1
4-117	103588	Sleeve	2	2	2
4-118	103589	Spring	2	2	2
4-119	103590	Ball	2	2	2
4-120	103591	Valve	2	2	2
4-121	973190	O — Ring	2	2	2
4-122	103592	Spring — Ac. Valve	1	1	1
4-123	103593	Plug — Hex	1	1	1
4-124	5993	Support — Cam Block	1	1	1
4-125	911037	Screw — Soc. HD. $\frac{1}{4}$ -20 x $\frac{1}{2}$	3	3	3
4-126	102787	Arm — Cam Follower	1	1	1
4-127	933269	Roll Pin $\frac{1}{4}$ x $1\frac{1}{4}$	1	1	1
4-128	909849-5	Set Screw — $\frac{1}{4}$ -20 x $\frac{5}{16}$	1	1	1
4-129	5995	Eccentric — Cam Follower	1	1	1
4-130	5996	Cam	1	1	1
4-131	5998	Plate — Tension	2	2	2
	910777-4	Screw #8-32 x $\frac{1}{2}$	2	2	2
	920078-4	Lockwasher #8	2	2	2
	920229-4	Washer — .188 I.D. x .31 O.D.	2	2	2
4-132	103110	Spring — Impl. Valve	1	1	1
4-133	973370	O — Ring	2	2	2
	971018	Lg. O — Ring — Pump to Motor	2	2	2
	103184	Ring — Back Up Pump to Motor	2	2	2
	971015	Sm. O — Ring — Pump to Motor	2	2	2
4-134	102759	Gasket	1	1	1
4-135	103574	Shim Set	1	0	0

Plate 1.1

FRAME

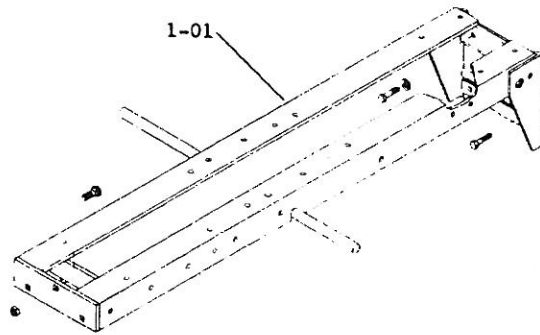
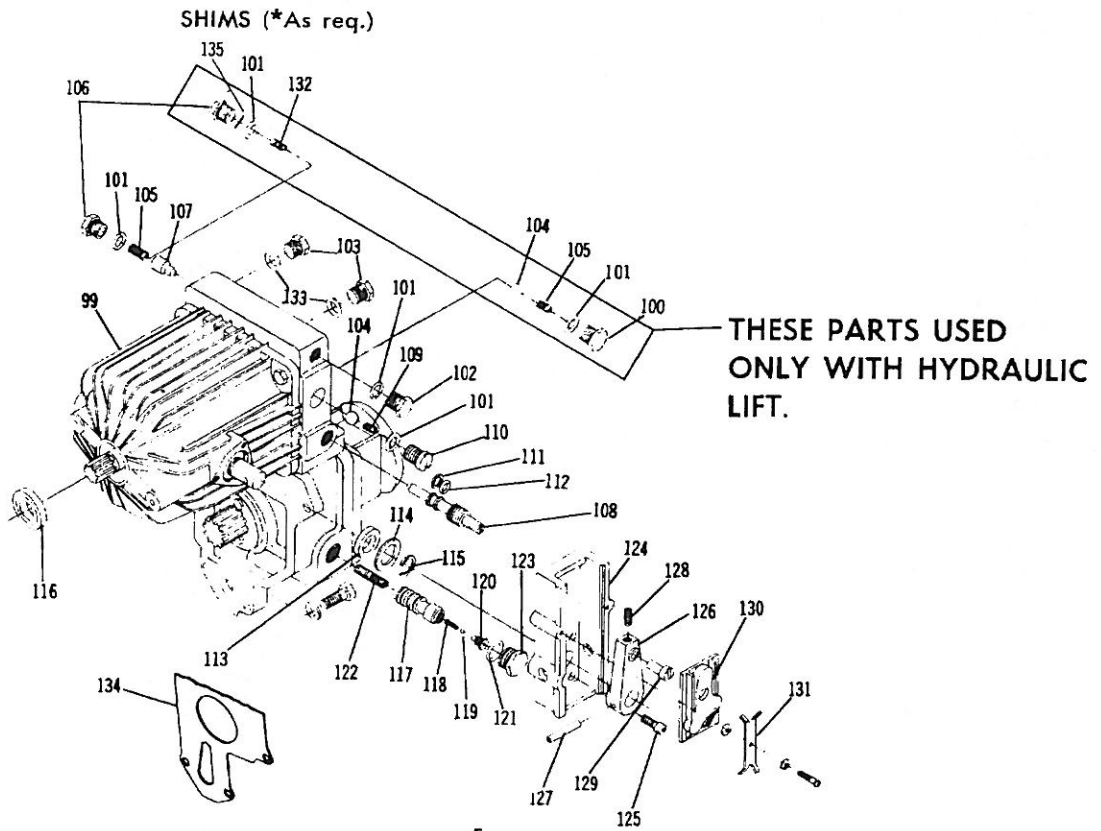


Plate 4.5

HYDROSTATIC TRANSMISSION

PISTON-PISTON TYPE



ITEM NO.	PART NO.	DESCRIPTION	NO. REQ'D.
5.000 FRONT AXLE AND STEERING (PLATE 5.2)			
5-01	5638	Axle Ass'y. — Front	1
	1030	Fitting Grease	2
	1481	Fitting — Grease	1
5-02	6216	Pin and Plate Ass'y.	1
	908015-4	Bolt, $\frac{3}{16}$ -18 x $\frac{1}{2}$	1
	920082-4	Lockwasher, $\frac{3}{16}$	1
5-03	5630	Spindle Ass'y. R.H.	1
	5631	Spindle Ass'y. L.H.	1
	5618	E-Ring	3
5-11	102592	Ball Joint Ass'y. R.H.	1
	102593	Ball Joint Ass'y. L.H.	1
	915002-6	Nut, Eslok $\frac{3}{8}$ -24	4
	5583	Stop — R.H. — B-100	1
	5582	Stop — L.H. — B-100	1
5-16	6472	Bearing and Housing	1
	908034-4	Bolt, $\frac{3}{8}$ -16 x 1	1
	915113-6	Nut, Eslok $\frac{3}{8}$ -16	2
5-17	102402	Shaft — Lower Steering — B-100	1
	6469	Shaft — Lower Steering — C-120, C-160	1
	5210	Washer, Shim (.015)	1
	1278	Washer, Shim (.050)	1
	932035-4	Cotter Pin, $\frac{3}{16}$ x $1\frac{1}{4}$	1
5-20	7896	Washer, Spring	1
5-25	6396	Support Ass'y., Lower Steering	1
	908035-4	Bolt, $\frac{3}{8}$ -16 x $1\frac{1}{4}$	2
	915113-6	Nut, $\frac{3}{8}$ -16 Eslok	2
	1030	Fitting — Grease	1
5-26	6397	Bushing, Lower Shaft	1
5-28	101442	Bushing, Steering Column	1
5-32	104004	Shaft Ass'y., Upper Steering	1
5-33	1085	Collar, Ser	1
	909848-5	Set Screw, $\frac{1}{4}$ -20 x $\frac{1}{4}$ Nylok	1
5-35	104007	Collar, Steering	1
5-39	102715	Wheel, Steering	1
	933221	Pin Spirol $\frac{1}{4}$ x 2	1
5-44	102856	Insert, Steering Wheel	1

6.050 BRAKE CLUTCH SPEED CONTROL LINKAGE (PLATE 6.5)

6-08	100634	Handle — Parking Brake	1
6-09	8693	Knob — Plain Bolt Hole	AR
	8722	Knob — #10-24 Thread	AR
	910797-4	Screw, #10-24 x $1\frac{1}{4}$ Pan Head	AR
6-14	1230	Spring	1
	908003-4	Bolt, $\frac{1}{4}$ -20 x $\frac{3}{4}$ Spring Anchor	1
	915111-6	Nut, $\frac{1}{4}$ -20	1
	102747	Pedal	1
6-21	6254	Bushing — Pedal	2
6-22	1085	Collar	1
	909848-5	Set Screw, $\frac{1}{4}$ -20 x $\frac{1}{4}$ Nylok	1
6-22B	979207-4	Spacer (Split)	1
6-22C	4064	Spacer	1
6-23	6113	Ass'y. — Rod — Neutral	1
	932017-4	Cotter Pin, $\frac{1}{8}$ x 1	1
	933503-4	Hairpin Cotter	2
6-26	6130	Ass'y. — Idler Arm	1
	920011-4	Washer, $\frac{1}{2}$ SAE	1
	908003-4	Bolt, $\frac{1}{4}$ -20 x $\frac{3}{4}$ Idler Arm Stop	1
	915234-4	Nut, $\frac{1}{4}$ -20 Jam	1
	920081-4	Lockwasher, $\frac{1}{4}$	1
6-29	7434	Pulley — Idler	1
	911404-4	Bolt, $\frac{3}{8}$ -16 x $1\frac{3}{8}$	1
6-30	7435	Spacer	1
6-32	9170	Spring	1
6-42	7879	Bushing	AR
6-43	7474	Ass'y. — Lever — Brake	1
	920011-4	Washer, $\frac{1}{2}$ SAE	1
	920009-4	Washer, $\frac{3}{8}$ SAE	1
	932001-4	Cotter Pin, $\frac{1}{16}$ x $\frac{3}{4}$	1
	5701	E-Ring	1
6-50	103891	Ass'y. — Cam Control	1
6-51	6129	Knob	1
	103996	Spring — Detent	1
	920008-4	Washer, $\frac{3}{16}$	2
	926694-4	Screw, $\frac{3}{16}$ -18 x $\frac{5}{8}$	2
6-53	MW-2195	Bushing — Bronze	1
	5701	E-Ring, $\frac{1}{2}$	1
6-54	6127	Pin — Cam Block	1
	915113-6	Nut, $\frac{3}{8}$ -16	1

ITEM NO.	PART NO.	DESCRIPTION	NO. REQ'D.
6-55	7604	Ass'y. — Rod — Cam Pivot	1
	937007	Key, $\frac{1}{8}$ x $\frac{1}{2}$ Woodruff	1
	926694-4	Screw, $\frac{5}{16}$ -18 x $\frac{3}{8}$ S.T.	1
6-56	7599	Collar — Friction	1
6-57	7601	Collar — Bracket Pivot	1
6-58	7600	Cone — Friction	1
6-59	7602	Spring — Friction	1
	920011-4	Washer, $\frac{1}{2}$ SAE	2
	7879	Bushing	1
6-60	7603	Collar — Friction Adjusting	1
	915241-4	Nut, $\frac{3}{4}$ -10 Jam	1
6-61	6142	Plate — Cam — Neutral	1
6-62	6143	Spacer — Cam Plate	1
6-63	5983	Bushing — Nyliner	1
6-64	3765	Washer, $\frac{1}{2}$ Dia. Special	1
	908035-4	Bolt, $\frac{3}{8}$ -16 x $1\frac{1}{4}$	1
	915113-6	Nut, $\frac{3}{8}$ -16	1
	920009-4	Washer, $\frac{3}{8}$	1
6-79	5701	E-Ring — $\frac{1}{2}$ " Shaft	AR

7.000 HITCH ASSEMBLIES (PLATE 7.1)

7-01	102639	Latch — Mid	1
7-12	101711	Hitch — Front	1
7-13	101741	Latch Ass'y. — Hitch	1
7-14	101750	Rod, Latch Pivot	1
7-15	101751	Rod, Lock	1
	MW-4564	E-Ring, $\frac{3}{4}$	8
7-16	101707	Lock	1
7-17	8616	Spring	2
7-18	3680	Cap	2
7-20	1644	Hitch	1
7-22	1647	Pin — Hitch Mounting	1
	979120-4	Spacer	2
	936125	Snap Ring, $\frac{3}{4}$ Shaft	2
	1813	Tool Pin	1
7-24	102644	Plate — R.H. & L.H.	2
7-25	102672	Rod — Lock	1
7-26	101017	Lock	1
	908034-4	Bolt, Hex $\frac{3}{8}$ -16 x 1	3
	915113-6	Nut, Hex $\frac{3}{8}$ -16	3

7.030 LIFT LINKAGE (PLATE 7.2)

7-30	5448	Lift Lever Ass'y.	B-100 C-120	1
	933506-4	Hairpin Cotter, Mounting Block	" "	1
	908015-4	Bolt, $\frac{3}{16}$ -18 x $\frac{1}{2}$ Mounting	" "	3
	920082-4	Lockwasher, $\frac{3}{16}$	" "	3
7-31	3680	Cap — Rod End	" "	2
7-32	6542	Grip — Handle	" "	1
7-33	3624	Spring	" "	1
7-35	3578	Guide — Plunger Rod	" "	1
7-36	5449	Plunger Rod	" "	1
7-37	4438	Plunger	" "	1
	933168	Roll Pin, $\frac{3}{32}$ x $1\frac{1}{16}$	" "	1
7-38	102797	Plug	" "	1
7-40	5640	Quadrant	" "	1
7-41	2179	Rod — Height Control	" "	1
7-42	5280	Knob — Height Control	" "	1
	926715-4	Bolt, $\frac{3}{8}$ -16 x $\frac{3}{4}$ S.T.	" "	2
7-43	8277	Conduit Ass'y.	" "	1
7-56	102373	Lift Bar Ass'y.	" "	1
7-57	6229	Bearing	" "	1
	5701	E-Ring $\frac{1}{2}$ "	" "	1
7-58	102385	Rod, Lift	" "	1
7-59	6739	Trunnion	" "	1
	933504-4	Hairpin Cotter	" "	1
	932008-4	Cotter Pin, $\frac{3}{32}$ x $\frac{3}{4}$	" "	1
	915663-4	Nut, $\frac{3}{8}$ -16 E.S.	" "	1

7.060 HYDRAULIC LIFT LINKAGE (PLATE 7.6)

7-60	6615	Ass'y. Lift Arm	C-160	1
	933506-4	Hairpin Cotter	"	2
	908015-4	Bolt, Hex $\frac{3}{16}$ -18 x $\frac{1}{2}$	"	3
7-61	6629	Arm — Height Indicator	"	1
	910865-4	Bolt, $\frac{3}{16}$ -18 x $\frac{3}{4}$	"	1
	920008-4	Washer, $\frac{5}{16}$ SAE	"	1
	920032-4	Lockwasher, $\frac{3}{16}$	"	1
7-62	6628	Plate — Indicator	"	1

ITEM NO.	PART NO.	DESCRIPTION	NO. REQ'D.
8.000 SHEET METAL AND COVERS (PLATE 8.2)			
8-01	103825	Hood Ass'y. — C-100	1
	9699	Hood Ass'y. — C-120, C-160	1
8-05	101732	Bracket — Grille — R.H. — C-120, C-160	1
	101733	Bracket — Grille — L.H. — C-120, C-160	1
	103834	Bracket — Grille — R.H. — B-100	1
	103835	Bracket — Grille — L.H. — B-100	1
	900037-4	Bolt, $\frac{3}{16}$ -18 x $\frac{3}{4}$ Carriage	4
	915112-6	Nut, $\frac{3}{16}$ -18 Eslok	4
8-06	101710	Rod — Pivot	1
	100398	Ring, Retainer	2
	101850	Rod — Hood Stop	1
	932000-4	Cotter Pin, $\frac{1}{16}$ x $\frac{1}{2}$	2
8-09	5467	Lever — Hood Latch	1
	933182	Roll Pin, $\frac{3}{16}$ x $\frac{5}{8}$	1
8-10	5469	Knob — Hood Latch	1
8-11	5468	Roller — Steel	2
8-12	5522	Rod — Hood Latch	1
	5466	Speed Nut, $\frac{1}{4}$ Push On	2
	915932-4	Nut — Hi Crown #10-24	2
8-15	5438	Ornament — Hood	1
	5437	Speed Nut, $\frac{1}{8}$ Dia. Push On	2
	100646	Washer, Rubber	2
8-16	7416	Plate — Escutcheon — B-100	1
	7721	Clip — Push On — B-100	4
	100646	Washer — Rubber — B-100	2
8-30	103836	Hoodstand Ass'y.	1
	908034-4	Bolt, $\frac{3}{8}$ -16 x 1 To Frame	4
	915113-6	Nut, $\frac{3}{8}$ -16 Eslok	4
8-32	104180	Cover — Dust	1
	908017-4	Bolt, $\frac{3}{8}$ -18 x $\frac{3}{4}$	4
	915112-6	Nut, $\frac{3}{8}$ -18 Eslok	4
8-35	104056	Plate — Cover — Instructions	1
	960151-4	Bolt, $\frac{1}{4}$ -20 x $\frac{1}{2}$ Whizlock	2
	MW-4475	Clip	4
8-37	5450	Housing — Control Panel	1
	960152-4	Bolt, $\frac{1}{4}$ -20 x $\frac{3}{8}$ Whizlock	4
	915111-6	Nut, $\frac{1}{4}$ -20 Eslok	4
8-40	104023	Panel — Dash	1
	935090-4	Plug Button	2
8-41	101841	Plate — Backup	1
	5442	Speednut #10-16	4
	102168	Screw S.T. 10-16	4
8-44	5606	Tape — Hood Insulation	AR
8-45	103877	Support — Fuel Tank	1
	926720-4	Screw, $\frac{3}{16}$ -18 x $\frac{3}{4}$ S.T.	4
	3023	Clip	AR
	935141-4	Plug Button	1
8-47	101344	Bracket Instrument	1
	MW-4475	Clip, Tinnerman $\frac{1}{4}$ -20	2
	960151-4	Bolt, Whizlock $\frac{1}{4}$ -20 x $\frac{1}{2}$	2
8-71	102370	Fender	1
8-80	7879	Bushing — Bronze	2
8-81	4937	Spacer	2
	908033-4	Bolt, $\frac{3}{8}$ -16 x $\frac{3}{8}$	2
	915663-4	Nut, $\frac{3}{8}$ -16 E.S.	2
	920009-4	Washer, $\frac{3}{8}$ — SAE	2
8-83	6110	Tool Box	1
	908032-4	Bolt, $\frac{3}{8}$ -16 x $\frac{3}{4}$	4
	920083-4	Lockwasher, $\frac{3}{8}$	4
8-84	104087	Latch — Fender	1
8-85	MW-8863	Spring — Latch	1
	5977	Bushing	1
	7617	Pin, $\frac{3}{16}$ Rod End	1
	932008-4	Cotter Pin, $\frac{3}{32}$ x $\frac{3}{4}$	1
8-86	7616	Bracket — Fender Latch	1
	908002-4	Screw, $\frac{1}{4}$ -20 x $\frac{3}{8}$	2
	915111-6	Nut, $\frac{1}{4}$ -20 Eslok	2
8-90	8007	Bracket — Foot Rest — C-160	1
	103830	Bracket — Foot Rest — B-100, C-120	1
	926694-4	Screw, $\frac{3}{16}$ -18 x $\frac{3}{8}$ S.T.	2
8-91	103372	Foot Rest — R.H.	1
	102799	Foot Rest — L.H.	1
	104142	Pad — Foot Rest — R.H.	1
	104141	Pad — Foot Rest — L.H.	1
	908017-4	Bolt, $\frac{3}{16}$ -18 x $\frac{3}{4}$ To Bracket	4
	915662-4	Nut, $\frac{3}{16}$ -18 E.S.	4
	960175-4	Bolt, $\frac{3}{16}$ -18 x $\frac{1}{2}$ To Belt Guard	2

ITEM NO.	PART NO.	DESCRIPTION	NO. REQ'D.
8-92	7456	Bracket — Foot Rest Anchor	2
	900037-4	Bolt, $\frac{3}{16}$ -18 x $\frac{3}{4}$ Carriage	2
	915662-4	Nut, $\frac{3}{16}$ -18 E.S.	2
8-94	102248	Bracket — Fender (Front)	1
	900036-4	Bolt, $\frac{3}{16}$ -18 x $\frac{3}{8}$ Carriage	2
	915112-6	Nut, $\frac{3}{16}$ -18 Eslok	2
	5667	Bumper, Rubber	2
8-95	102249	Bracket — Fender Hinge	1
	908034-4	Bolt, $\frac{3}{8}$ -16 x 1	2
8-100	102954	Belt Guard Ass'y.	1
	908045-4	Bolt, $\frac{3}{16}$ -14 x $\frac{3}{4}$ Eng. Mount	1
	908046-4	Bolt, $\frac{3}{16}$ -14 x 1 Eng. Mount (1-0490)	1
	960175-4	Bolt, $\frac{3}{16}$ -18 x $\frac{1}{2}$	1
	920084-4	Lockwasher, $\frac{3}{16}$	1
	908017-4	Bolt, $\frac{3}{16}$ -18 x $\frac{3}{4}$	2
	915662-4	Nut, $\frac{3}{16}$ -18 E.S.	2
	920008-4	Washer, $\frac{3}{16}$ S.A.E.	2
8-101	102810	Channel — Wire	1
	9690	Spacer	1
	920082-4	Lockwasher, $\frac{5}{16}$	4
	908017-4	Bolt, $\frac{3}{16}$ -18 x $\frac{3}{4}$	4
	915112-4	Nut, Hex $\frac{3}{16}$ -18	4
9.000 ENGINE (PLATE 9.1)			
9-02	101954	Engine — 10 H.P. Kohler — B-100	1
	101955	Engine — 12 H.P. Kohler — C-120	1
	100784	12 H.P. Tecumseh (1-0495)	1
	102951	Engine — 16 H.P. Kohler — C-160	1
	908034-4	Bolt, $\frac{3}{8}$ -16 x 1 Eng. Mount	8
	908036-4	Bolt, $\frac{3}{8}$ -16 x $1\frac{1}{2}$	2
	915663-4	Nut, $\frac{3}{8}$ -16 E.S.	4
	920083-4	Lockwasher, $\frac{3}{8}$	4
	104116	J-Bolt — B-100	1
	926718-4	Screw, S.T. $\frac{3}{8}$ -16 x $1\frac{1}{4}$ — B-100	1
9-06	943335-4	Nipple, Special — Drain	1
9-07	5222	Elbow, 90°	1
9-08	5224	Cap, $\frac{3}{8}$ Pipe	1
	103963	Base — Engine (1-0495)	1
	943364-4	Nipple, 1 x $1\frac{1}{2}$ (1-0495)	1
	943026-4	Elbow, 1" — 90° (1-0495)	1
10.000 FUEL AND EXHAUST SYSTEMS (PLATE 10.1)			
10-02	101837	Choke Control	1
10-03	101834	Throttle Control	1
	104016	Throttle Control (1-0495)	1
	8713	Screw, Pan Head 10-24 x $\frac{3}{8}$	4
	915964-4	Nut — Keps 10-24	4
10-04	102186	Knob, Choke	1
10-04A	102185	Knob, Throttle	1
10-13	100452	Strap, Engine (PTO Side)	1
10-14	100729	Clip, To Fuel Tank Support	1
	2879	Clip, Choke and Throttle	2
	960150-4	Screw — $\frac{1}{4}$ -20 x $\frac{3}{8}$ Whizlock	1
	5431	Nut — Special $\frac{1}{4}$ -20	1
	908001-4	Bolt, $\frac{1}{4}$ -20 x $\frac{1}{2}$	1
	915111-6	Nut, $\frac{1}{4}$ -20 Eslok	1
10-20	103487	Tank, Fuel	1
10-21	102321	Cap, Fuel Tank	1
10-22	100427	Wire, Tank Hold Down	1
10-25	6949	Spring	1
10-30	104048	Valve	1
	104047	Bushing	1
10-32	8214	Hose — Fuel	1
10-34	950154	Clamp, Corbin $\frac{1}{2}$ "	2
10-35	101861	Clamp, Hose	3
	908020-4	Bolt, $\frac{3}{16}$ -18 x $1\frac{1}{4}$	1
	920008-4	Washer, $\frac{3}{16}$ SAE	1
	915112-6	Nut, $\frac{3}{16}$ -18 Eslok	1
10-40	102258	Muffler	1
10-44	102645	Clamp — Muffler	2
10-49	102228	Tube Ass'y. Inlet	1
10-50	102265	Nipple — C-160	1
10-51	943151	Reducer — C-160	1
	103096	Nipple — $1\frac{1}{2}$ x 1" (1-0495)	1
	915111-4	Nut, $\frac{1}{4}$ -20 (1-0495)	2

e 7.2

LIFT LINKAGE

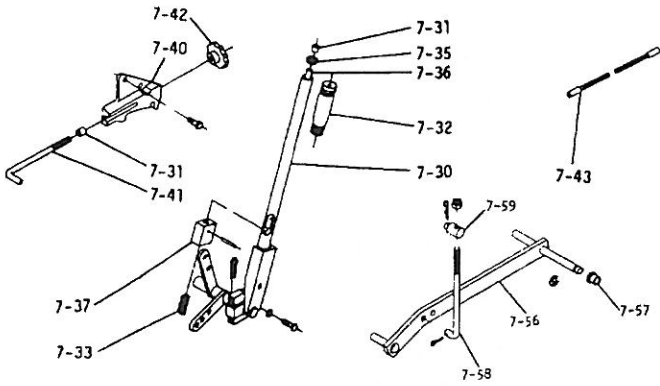
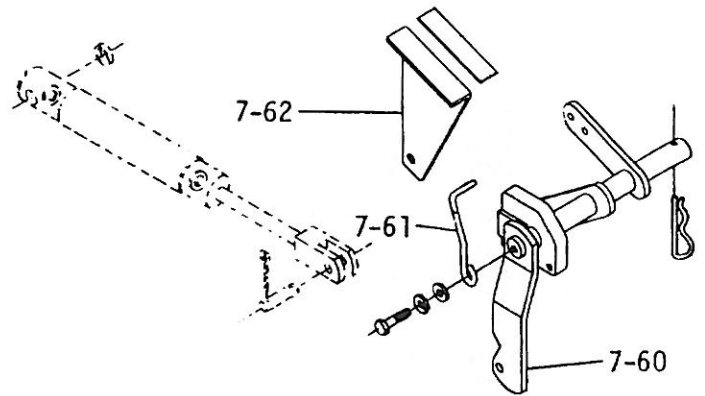
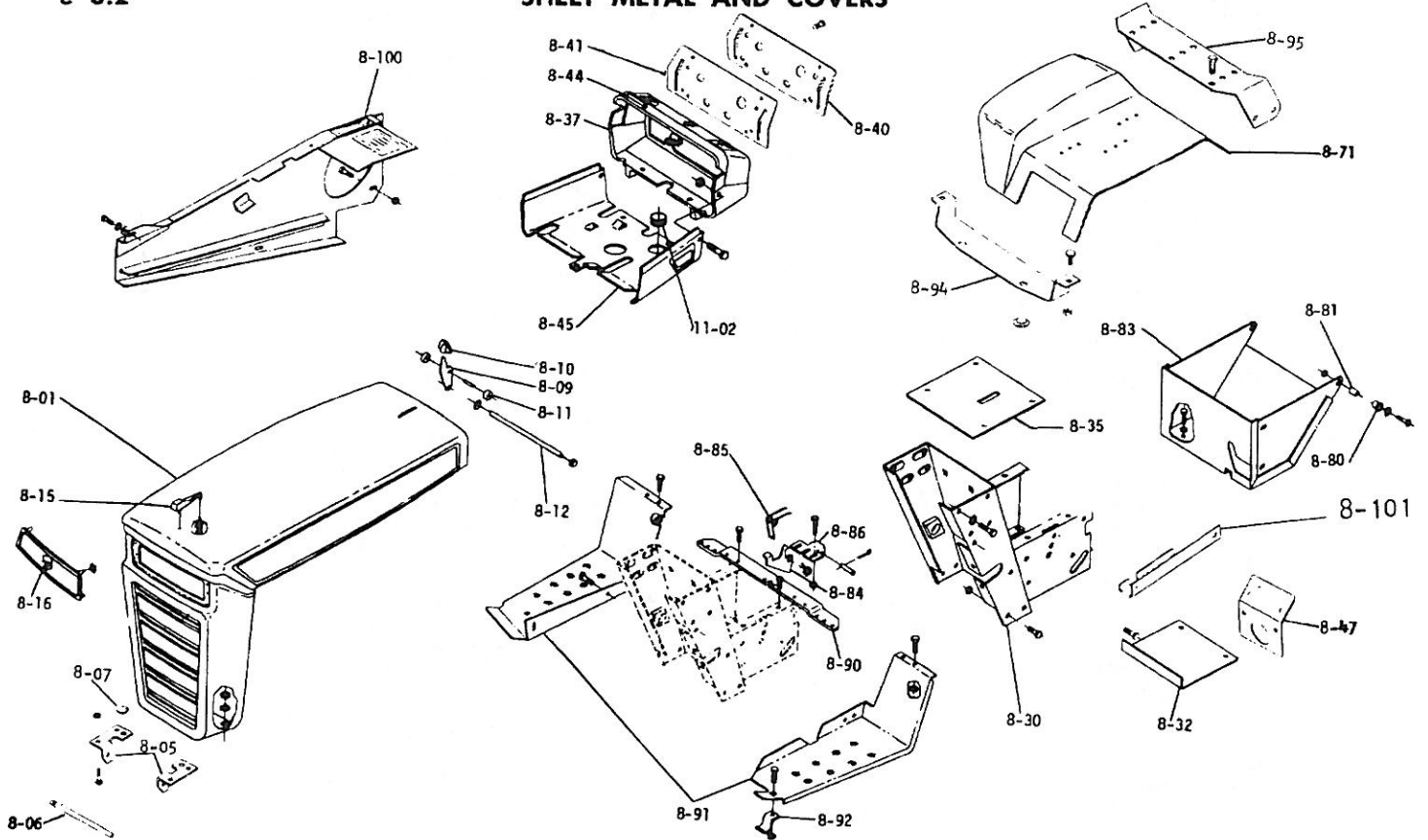


Plate 7.6 HYDRAULIC LIFT LINKAGE



e 8.2

SHEET METAL AND COVERS



ITEM NO.	PART NO.	DESCRIPTION	REQ'D. NO.	ITEM NO.	PART NO.	DESCRIPTION	NO. REQ'D.
11.00 ELECTRICAL SYSTEM (PLATE 11.1 and 11.2)				11-71			
11-01	102953	Harness — Wiring	1	6922	Connector — 2 Wire	1	
	104075	Harness — Wiring (1-0495)	1	3023	Clip	5	
	100571	Tie — Wire Retainer	AR	910808-4	Bolt, Pan Hd. 10-32 x 3/8	2	
	101446	Insulator (Plastic Shield)	1	915551-4	Nut, Hex 10-32	2	
	1756	Lock Nut, 1" (1-0495)	2	920079-4	Lockwasher, #10	2	
11-02	101971	Grommet Rubber (Plate 8.2)	1	12.000 HYDRAULIC SYSTEM (PLATE 12.2) C-160 ONLY			
11-03	100446	Wire, Battery to Ground	1	12-26	103204	Ass'y. — Valve — Hydraulic	1
	101972	Wire, Battery to Solenoid	1		101538	Ring Kit	1
	8655	Wire, Solenoid to Starter	1		101536	Spool Cap Kit	1
	103105	Wire, Solenoid to Starter (1-0495)	1	12-27	102892	Knob — Valve	1
	102250	Wire Ass'y. — Interlock Sw. to Solenoid	1		960154-4	Bolt, 1/4-20 x 3/8 Whizlock	1
	102251	Wire Ass'y. — Interlock Sw. to Harness	2		6620	Support — Valve	1
	103060	Wire — Switch	1	12-28	926715-4	Screw, S.T. 3/8-16 x 3/4	2
11-10	101846	Fused Connector	1		908007-4	Bolt, 1/4-20 x 1 1/2 Support to Valve	2
	101639	Fuse SFE 20 Amp, Box of 5	1		915111-6	Nut, 1/4-20 Eslak	2
11-13	7226	Wire Ass'y. & Terminal Head Light	2	12-29	6618	Ass'y. — Cylinder — Hydraulic	1
11-14	103137	Wiring Harness Head Light	1	12-30	6619	Pin — Cylinder/Linkage	1
	938007	Bushing	1		932017-4	Cotter Pin, 1/8 x 1	AR
	8519	Clip	2	12-31	4064	Spacer — Cylinder Mount	1
11-20	103990	Switch — Ignition	1	12-32	103213	Hose — Hydr. 16" to Trans. Top	1
	103991	Switch — Ignition (1-0495)	1		103214	Hose — Hydr. 19" to Trans. Rear	1
	101884	Nut — Hex Special 3/8-32	1		101422	Hose — Hydr. 14 1/2" to Cyl. Front	1
	920160-4	Lockwasher, 3/8	1		101423	Hose — Hydr. 11 1/2" to Cyl. Rear	1
11-21	7262	Key — Ignition Switch	2		973310	O-Ring (.414 I.D. x .072)	AR
11-24	102138	Switch — Light — C-120, C-160	1	12-33	100571	Tie — Hose Hold Down	AR
	935090-4	Plug Button — C-120	1	12-34	101537	Handle Ass'y.	1
11-25	102046	Ammeter	1	13.000 WHEELS AND TIRES (PLATE 13.1)			
	102047	Clamp, Mounting	1	13-01	9791	Wheel & Tire Ass'y. — Front	2
	5924	Nut, 10-32 E.S.	2	13-02	5432	Wheel & Tire Ass'y. — Rear — C-120, C-160	2
11-26	8658	Solenoid	1		100969	Wheel & Tire Ass'y. — Rear — B-100	2
	960151-4	Bolt, 1/4-20 x 1/2 Whizlock	2	13-04	5433	Wheel — 12 x 7 JA	2
	104080	Bracket, Solenoid (1-0495)	1		9652	Wheel — 6.50 x 8 — B-100	2
	920082-4	Lockwasher, 3/8	2		5108	Valve — Tubeless Tire	2
	908016-4	Bolt, 5/8-18 x 3/8	2	13-05	9792	Tire 16 x 6.50-8 Front	2
11-28	101450	Regulator — Rectifier	1	13-06	5434	Tire 9 x 12 Rear — C-120, C-160	2
	101436	Regulator (1-0495)	1		100772	Tire 7.50 x 12 Rear LG — B-100	2
	908003-4	Bolt, 1/4-20 x 3/4	2	13-07	5512	Tube 16 x 6.50-8 (Service Only)	2
	915111-6	Nut, 1/4-20 Eslak	2	13-08	7007	Tube 23 x 8.50-12 (Service Only)	2
11-30	101845	Switch — Interlock	2	13-11	4999	Bearing — Ball Front Wheel	2
	102277	Nut — Switch 3/16-18	2		908033-6	Bolt, 3/8-16 x 3/8	2
	103060	Wire Assembly	1	13-12	103470	Washer	2
11-31	101827	Bracket — Switch Mounting	1		1278	Washer (.050")	2
11-32	920220	Washer, Spacer To Frame	1		5210	Washer (.015")	2
	908034-4	Bolt, 3/8-16 x 1	1	13-15	4996	Hub — Wheel — B-100	2
	915113-6	Nut, 3/8-16 Eslak	1		6465	Hub, Wheel (5 Bolt) — C-120, C-160	2
11-40	100502	Battery	1		909554	Set Screw, 3/8-16 x 1 — Sq. Hd.	2
11-41	100438	Cap — Battery Cell	6		915236-4	Nut, Hex 3/8-16 Jam	2
11-42	9155	Cover — Battery Terminal — Positive	1		937022	Key — Woodruff #15	2
11-45	7781	Battery Box Ass'y.	2	13-16	1004	Lug Bolt	10
	915112-6	Nut, 3/8-18 Eslak	2	13-21	103565	Hub Cap	2
11-46	7779	Link — Battery Clamp	1	14.000 DRIVE BELTS AND PULLEYS (PLATE 14.1)			
	915111-6	Nut, 1/4-20 Eslak	2	14-01	7478	V-Belt — Drive	1
	103717	Hour Meter — C-160	1	14-03	7443	Pulley — Engine Main Drive	1
	103718	Clamp — C-160	1		6507	Key, 1/4 x 1/4 x 1/2	1
	103726	Ground Wire — C-160	1		909862-5	Set Screw, 3/8-18 x 3/16	2
	915661-4	Nut, E.S. 1/4-20 — C-160	1	14-10	103043	Pulley, Trans.	1
	5982	Bushing	1		103995	Washer, 3/21 Special	1
	104031	Assembly, Wire	1		908004-6	Bolt, 1/4-20 x 3/8 Nylok	1
11.060 LIGHTS (PLATE 11.2)				14.050 MANUAL P.T.O. (PLATE 14.3)			
11-60	7223	Reflector Hd. Light & Housing & Socket — C-120, C-160	1	14-53	103817	Clutch Plate & Facing Ass'y.	1
11-61	7227	Spring — Hd. Light Socket — C-120, C-160	2		103477	Plate — Clutch	1
11-62	7228	Bulb — Hd. Light #1156 — C-120, C-160	2		103140	Facing	1
11-63	103771	Lens — Hd. Light — C-120, C-160	1		6657	Rivet	6
	7229	Screw, 6-32 x 3/8 S.T. Special — C-120, C-160	4	14-54	6658	Race, Bearing	1
11-65	7618	Connector, 3 Wire — C-120, C-160	1	14-55	6659	Retainer, Bearing Race	2
	3023	Clip — C-120, C-160	4		960152-4	Bolt, 1/4-20 x 3/8 Whizlock	4
11-67	8041	Base — Tail Light W. Bulb — C-120, C-160	1	14-56	6663	Seal	1
11-68	8042	Cover — C-120, C-160	1				
11-69	8043	Bulb, Tail Light	1				
11-70	8044	Pad, Tail Light Mounting	1				

Plate 9.1

ENGINE

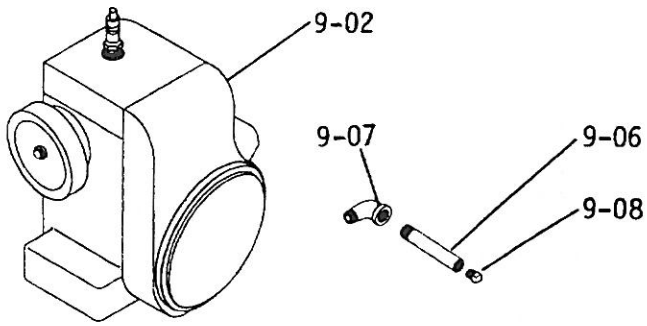


Plate 11.2 LIGHTS & CIGAR LIGHTER

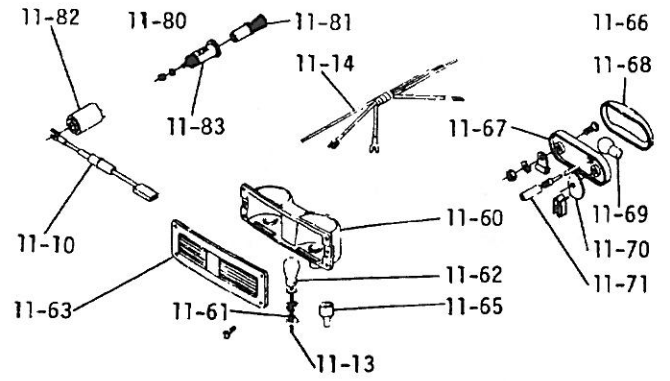


Plate 10.1

FUEL AND EXHAUST SYSTEM

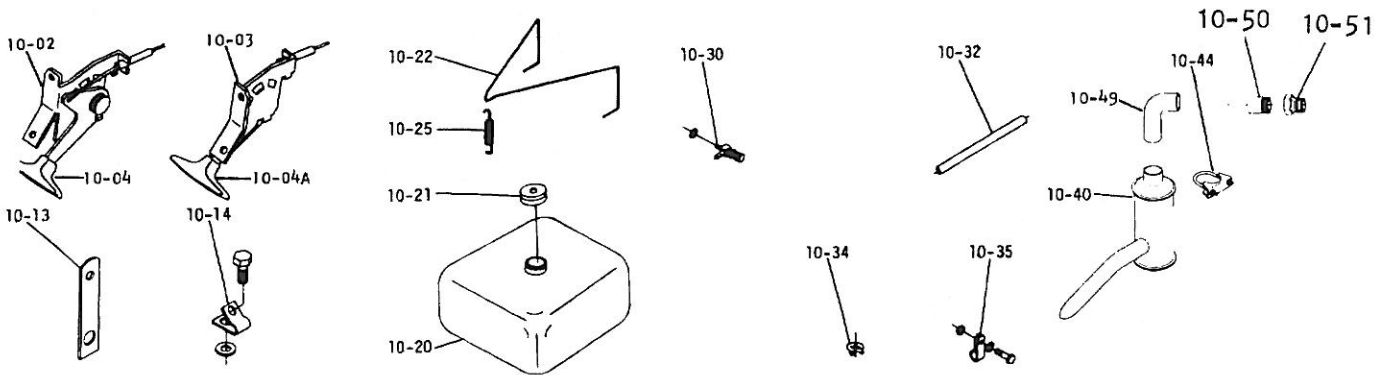
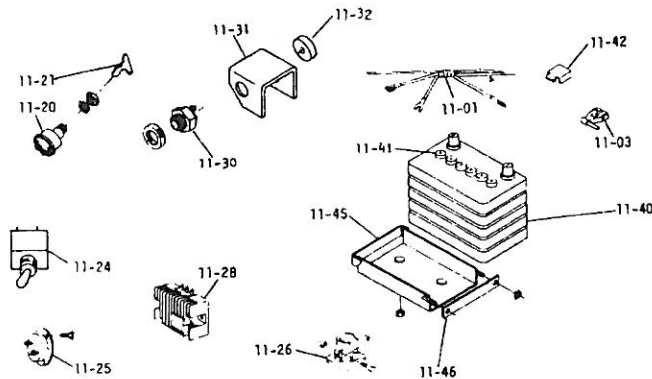


Plate 11.1

ELECTRICAL SYSTEM



FOR WIRING
DIAGRAMS
SEE PAGE 15.

ITEM NO.	PART NO.	DESCRIPTION	NO. REQ'D.
14-57	6662	Bearing	1
14-58	103478	Housing — Clutch & Pulley	1
14-59	5196	Bearing, Ball	1
14-60	936032	Snap Ring, 1 3/4 Bore	1
	933506-4	Hairpin Cotter	1
14-62	936125	Snap Ring, 3/4 Shaft	2
14-75	102872	Shaft — Clutch	1
14-76	102938	Rod — Housing	1
14-77	933267	Spiral Pin, 5/32 x 1 1/4	2
14-78	102941	Clevis	1
14-79	102956	Pin	1
14-81	103078	Bracket — Engine	1
14-82	920084-4	Lockwasher, 5/16	1
14-83	102943	Plate	1
14-84	102704	Spacer	1
14-85	908046-4	Bolt, Hex 5/16-16 x 1	2
14-86	102809	Nut Flange	1
14-87	102937	Rod — Clutch	1
14-88	101161	Trunnion	1
14-89	932016-4	Cotter Pin, 1/8 x 3/4	2
14-90	933505-4	Hairpin	1
14-91	1230	Spring	1
14-92	103881	Clutch Lever Ass'y.	1
14-93	102964	Spacer	1
14-94	7879	Bushing	2
14-95	5701	E-Ring, 1/2 Shaft	1
14-96	9038	Grip	1
14-97	920011-4	Washer, 1/2	1
14-98	3765	Washer — Shim	1
14-99	102870	Support	1
14-100	908035-4	Bolt, Hex 3/8-16 x 1 1/4	2
14-101	915113-6	Nut, 3/8-16	2
14-103	933506-4	Hairpin	1

ITEM NO.	PART NO.	DESCRIPTION	REQ'D. NO.
15.000	SEATS, DECALS, MISC. TRIM (PLATE 15.1)		
15-01	100780	Cushion — Seat One Piece — B-100	1
	908017-4	Bolt, 5/16-18 x 3/4	4
	920082-4	Lockwasher, 5/16	4
15-02	102033	Seat Base Ass'y. — C-120, C-160	1
15-03	103145	Spring — Seat	2
	915112-6	Nut, Hex 5/16-18	4
15-04	9663	Cushion — Seat — C-120, C-160	1
	960151-4	Bolt, 1/4-20 x 1 1/2 Whizlock	3
15-05	9664	Cushion — Back — C-120, C-160	1
15-06	9665	Knob — Back Adjusting — C-120, C-160	1
	920082-4	Lockwasher — 5/16	4
	908037-4	Bolt, 5/16-18 x 3/4 Carriage	4
15-07	104101	Pad — Arm Rest — C-160	2
15-08	104102	Stop — Arm Rest — C-160	2
15-09	104103	Bracket — R.H. — C-160	1
	104104	Bracket — L.H. — C-160	1
15-10	104105	Arm — C-160	2
	900062-4	Bolt, Carriage 3/8-16 x 3/4	4
	915113-6	Nut, Eslok 3/8	4
	908042-4	Bolt, Hex 3/8-16 x 3	4
15-11	979242-4	Spacer	4
15-12	979394-4	Spacer	2
	960012-4	Nut, Flange 3/8-16	4
	920082-4	Lockwasher, 5/16	4
	908016-4	Bolt, Hex 5/16-18 x 5/8	4
15-20	102831	Decal — Hood Trim (Wheel Horse)	2
15-23	103899	Decal — B-100 Automatic	2
	103897	Decal — C-160 Automatic	2
	103895	Decal — C-120 Automatic	2
	103174	Decal — Fender	1
15-26	100614	Reflector — Fender — B-100	1
15-37	103324	Decal — Push Valve	1
15-38	103811	Decal — Maintenance	1
15-39	103568	Decal — Read Manual	1
15-41	104074	Decal — PTO Clutch	1
15-42	102948	Decal — Hand Lift	1
	103567	Decal — Caution	1

Plate 12.2 HYDRAULIC SYSTEM

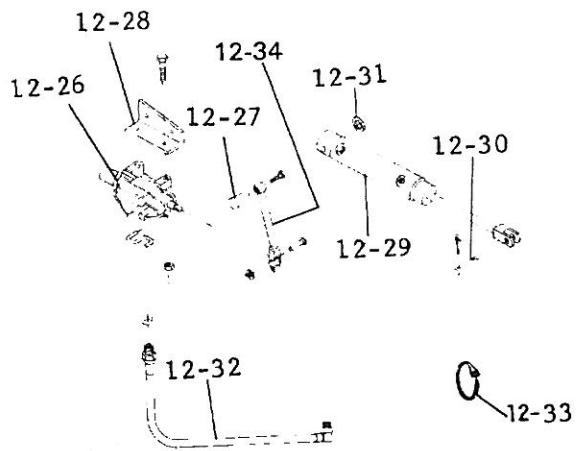


Plate 14.1 DRIVE BELTS, PULLEYS

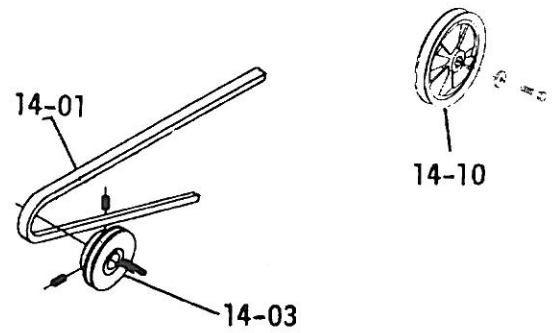


Plate 13.1 WHEELS AND TIRES

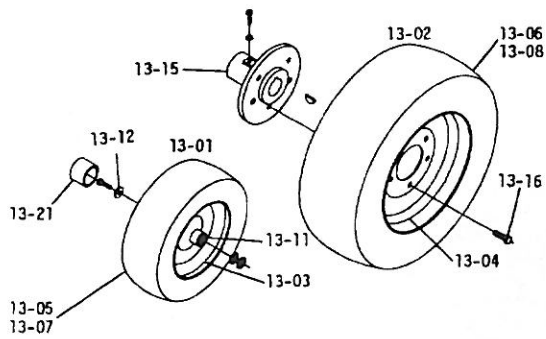


Plate 14.3 MANUAL PTO

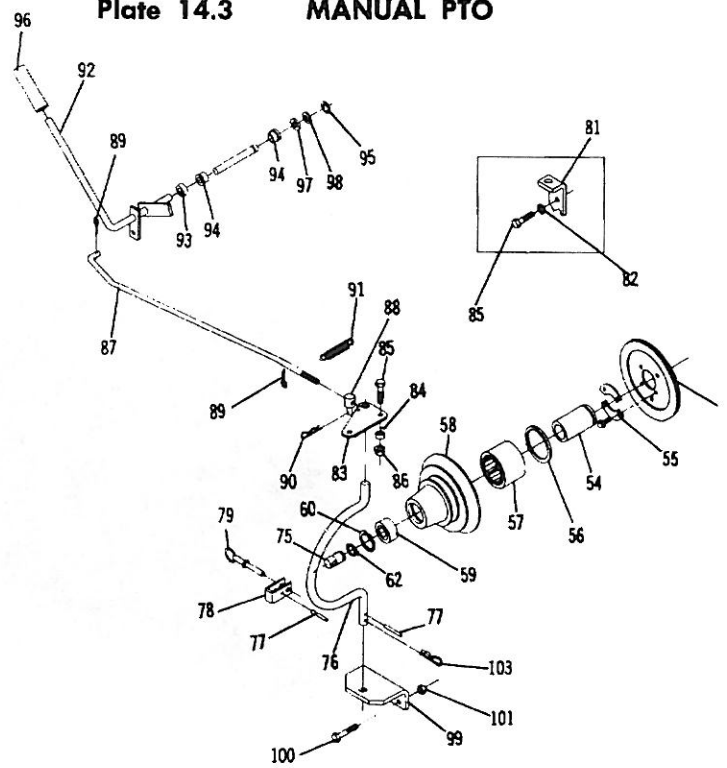
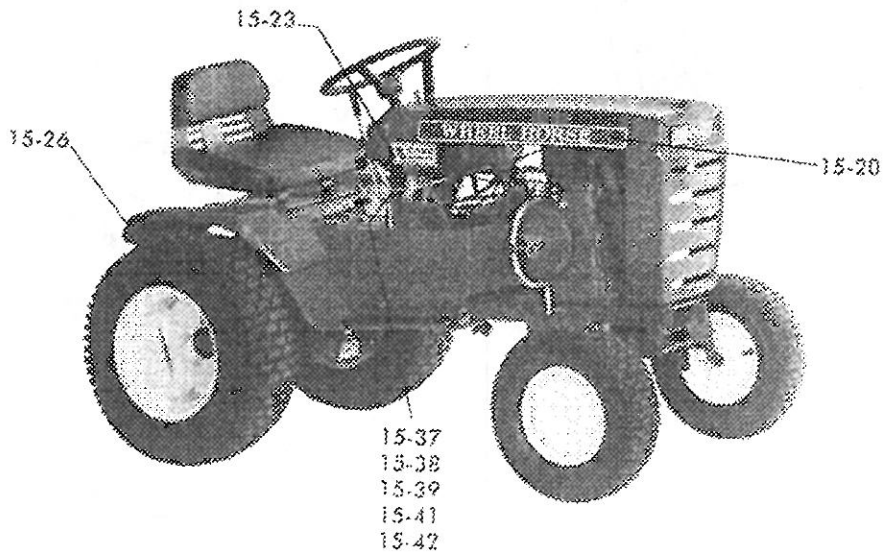
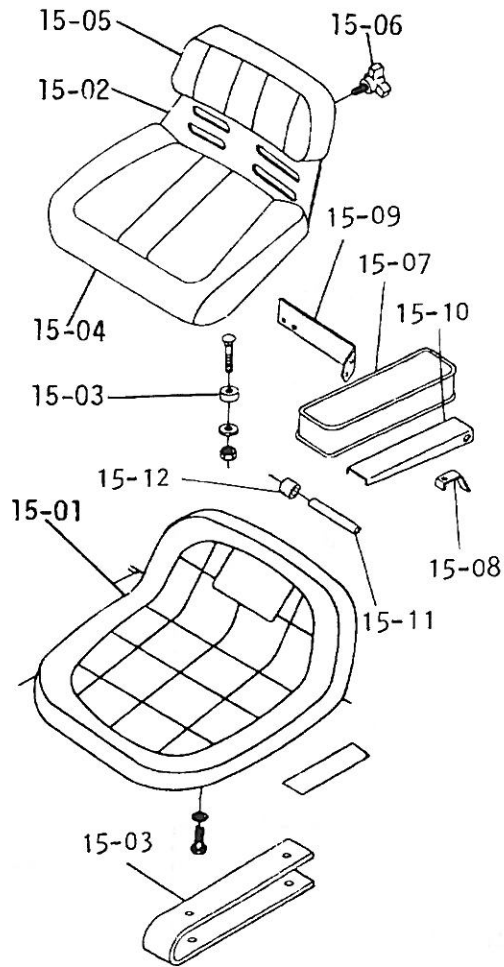
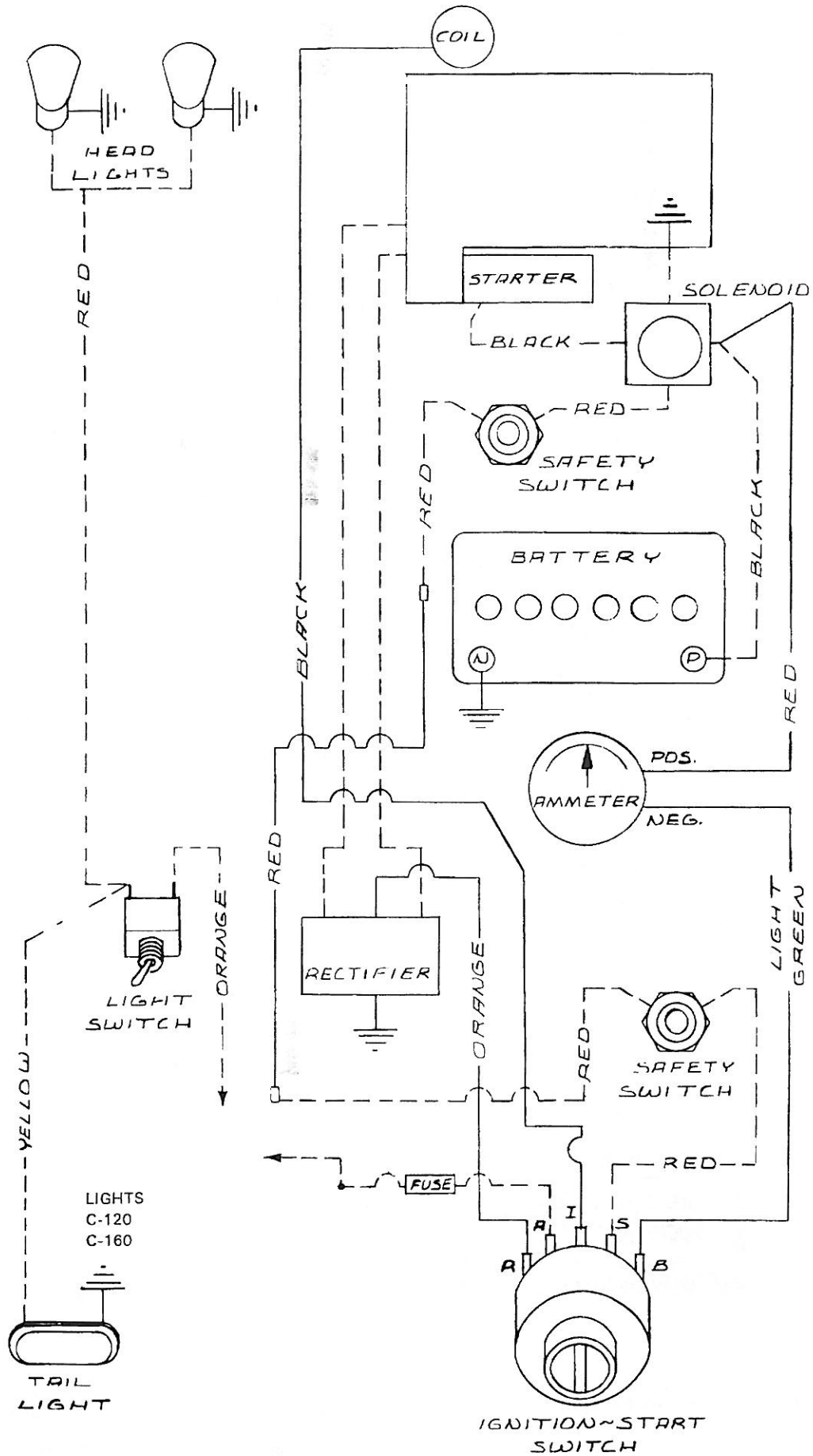


Plate 15.1 SEATS, DECALS, MISC. TRIM







Dealer sales & service

A nationwide network of Wheel Horse dealers sell and service our lawn and garden tractors. And behind every dealer stands the Wheel Horse team and its two-year guarantee. Our products are engineered for minimum maintenance. We're confident you'll enjoy many trouble-free hours of service with your Wheel Horse lawn and garden tractor.

There are several reasons why we say that. One is our modern, highly automated assembly procedures, which include tight quality control and final inspection to assure uniformity of quality in each and every Wheel Horse. Another is built-in strength. For instance, most of our tractors use our exclusive patented Wheel Horse Uni-Drive transmissions. They're encased in cast-iron and utilize heat-treated steel gears, tough bearings and hardened steel drive shafts. All Wheel Horse tractors use unitized steel frames for ruggedness.

A third reason: experience. Over the past 28 years, we've built hundreds of thousands of 4-wheel garden tractors and have pioneered many engineering innovations to increase the versatility and reduce maintenance costs. If your Wheel Horse needs a bit of service someday, see your authorized Wheel Horse dealer. He's listed in the Yellow Pages under "Lawn Mowers." Your Wheel Horse dealer is specially trained to maintain your tractor. He stocks genuine Wheel Horse parts and attachments to meet your needs.



"I've Got a Horse!" decals are yours just for sending a self-addressed stamped envelope to:

Decals
Wheel-Horse Products, Inc.
515 W. Ireland Rd., South Bend, Ind. 46614

WHEEL-HORSE PRODUCTS, INC., 515 Ireland Road, South Bend, Indiana 46614