



WHEEL HORSE

PARTS MANUAL



8 - 10 - 12 - 14 HP Eight Speed

MODEL AND SERIAL NUMBERS

Serial and model numbers are necessary to correctly identify your tractor and engine whenever you need repair parts. The tractor model and serial numbers are on a plate attached to the hood stand just below the control panel.

The engine model and serial numbers are on a plate attached to the engine shroud.

For your convenience and ready reference, enter the model and serial numbers in the spaces below.

Tractor Model No.

Tractor Serial No.

Engine Model & Spec. No.

Engine Serial No.

TO ORDER PARTS FROM THIS MANUAL

1. Find the illustration of the desired part and note its identifying number.

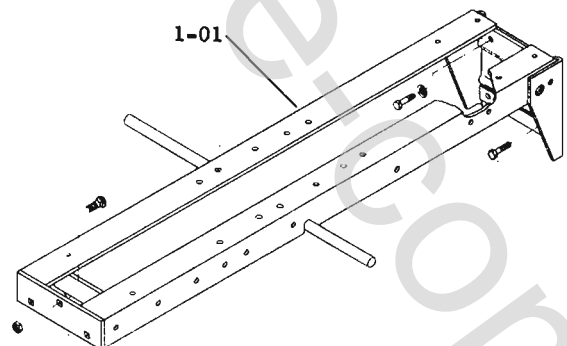
2. Locate the item number in the parts listing and determine the part number and description.
3. Make sure the part to be ordered is for your model tractor as designated in the Model Application Column.
4. Order the part from your local authorized Wheel Horse Dealer.

WHEEL-HORSE PRODUCTS, INC.

515 W. Ireland Road, South Bend, Indiana 46614

Plate 1.1

FRAME



TRANSMISSION 6-SPEED

Plate 3.1

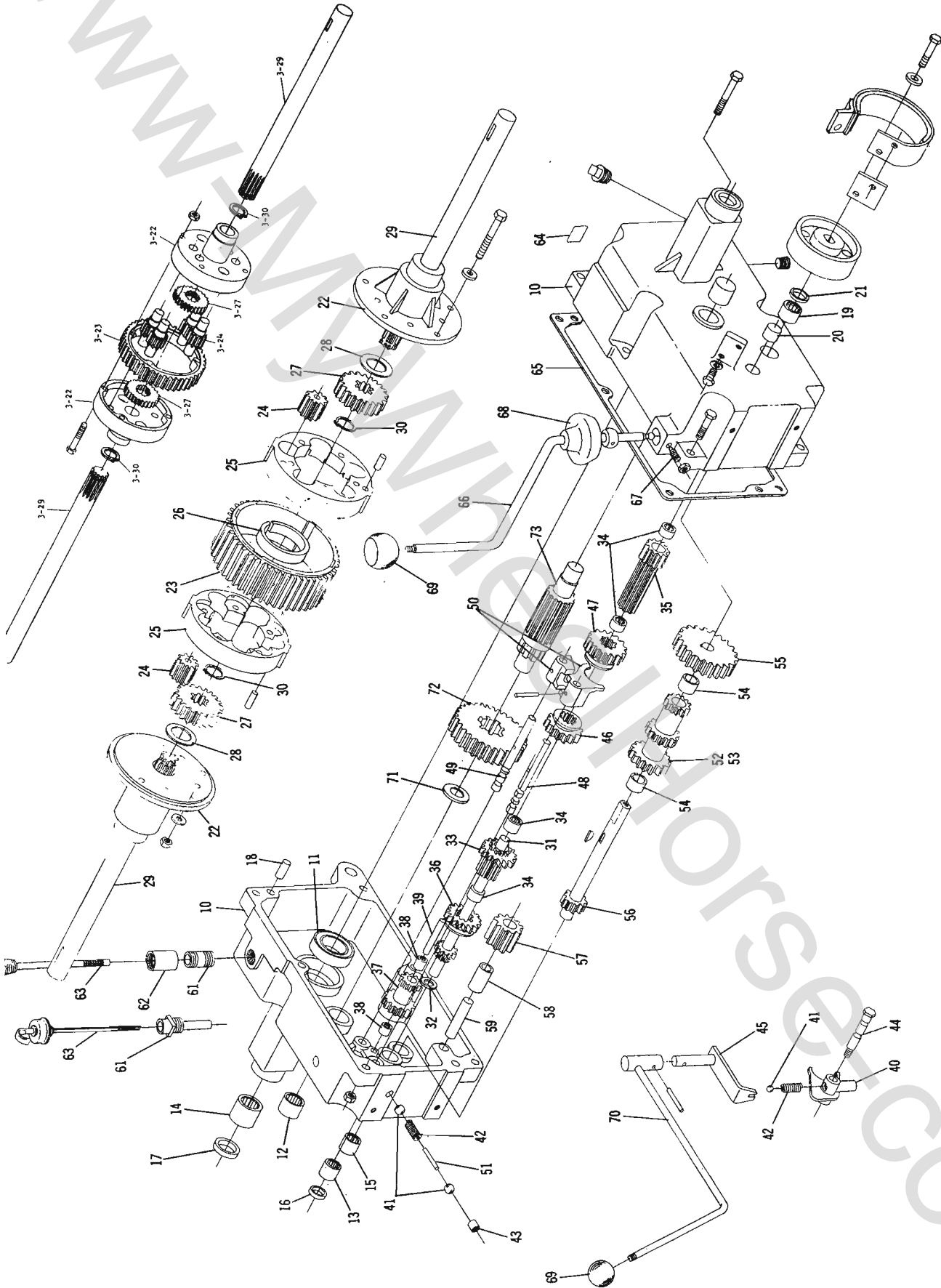


Plate 5.1 FRONT AXLE AND STEERING

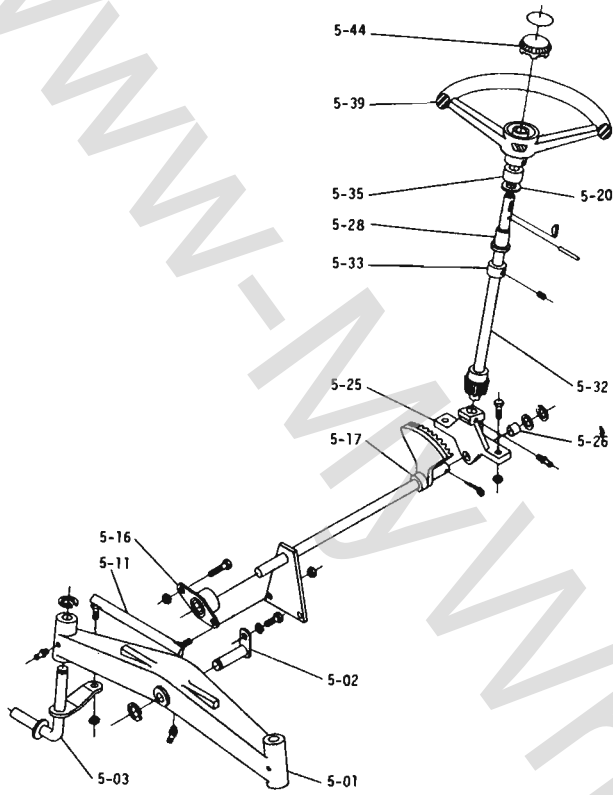


Plate 6.2 BRAKE/CLUTCH LINKAGE

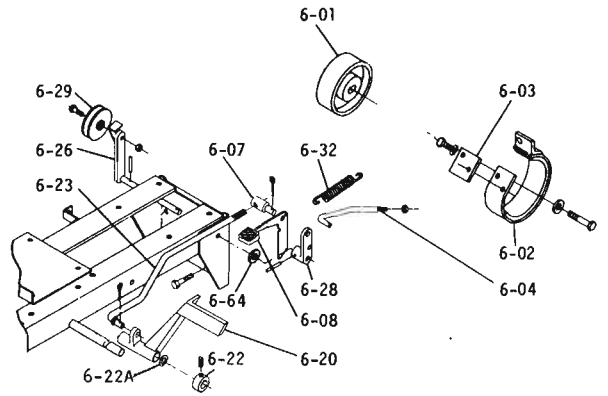


Plate 7.1 HITCHES

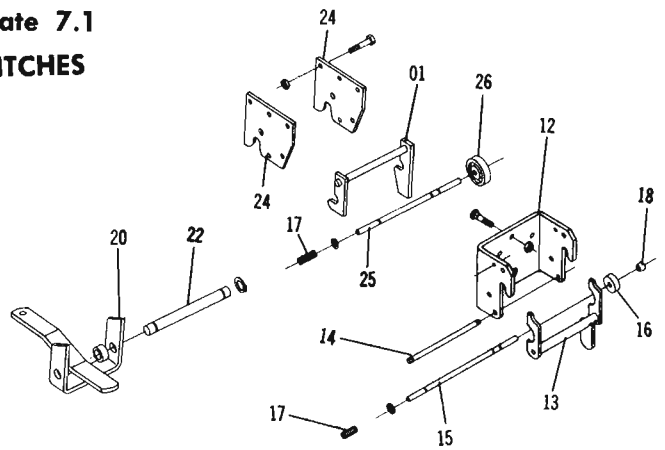
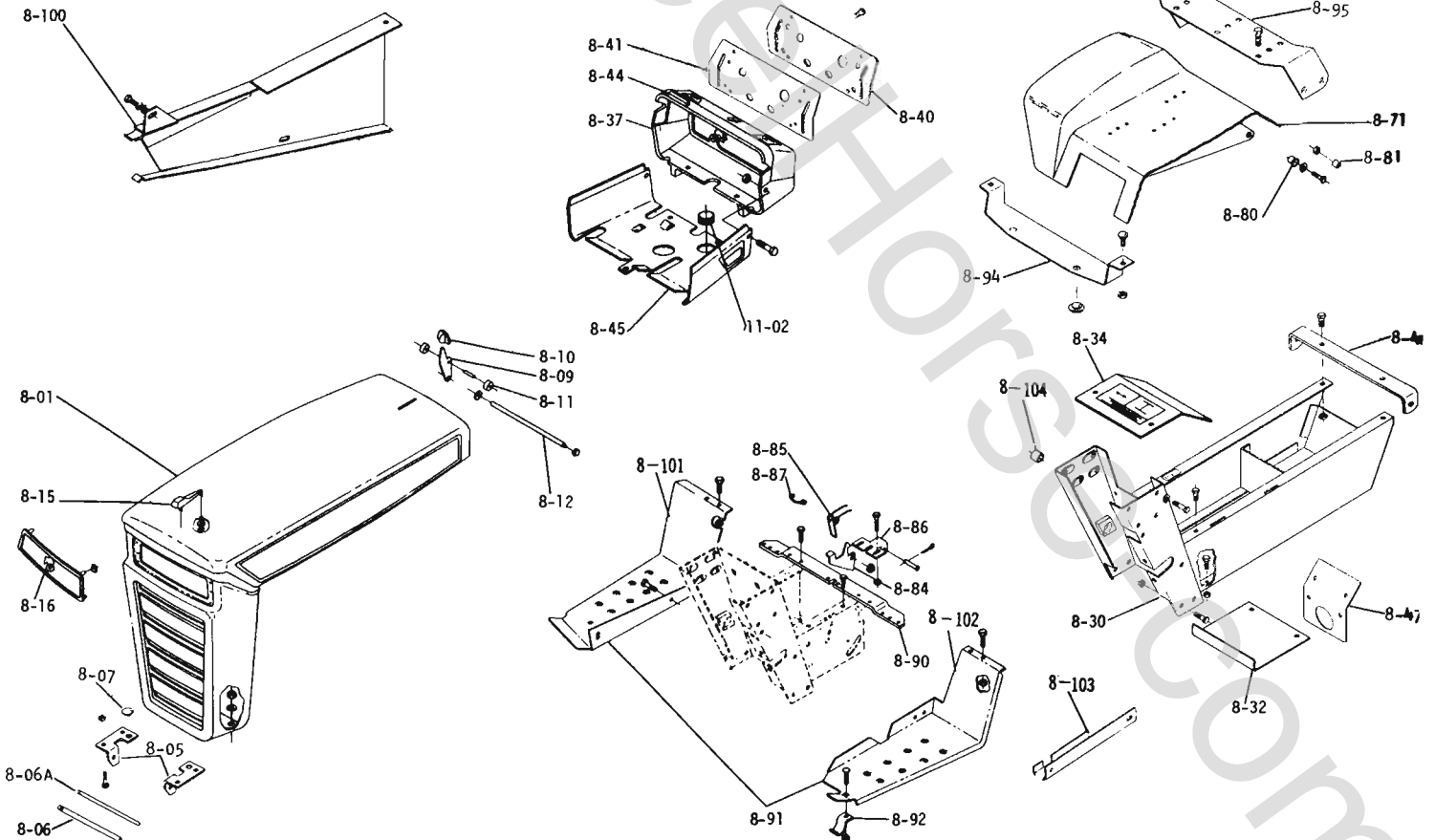


Plate 8.1

SHEET METAL AND COVERS



ITEM NO.	PART NO.	DESCRIPTION	MODEL APPLICATION	NO. REQ'D.
1.000 FRAME ASSEMBLY (PLATE 1.1)				
1-01	101794	Frame Assy.	All models	1
	908032-4	Bolt, $\frac{3}{8}$ -16 x $\frac{3}{4}$ Trans. Upper	unless otherwise shown	2
	920083-4	Lock Washer, $\frac{3}{8}$ Upper Bolts		2
	908033-6	Bolt, Eslok $\frac{3}{8}$ -16 x $\frac{7}{8}$ Trans. Lw.		2
	900063-9	Bolt, Carriage $\frac{3}{8}$ -16 x 1 Ft. Hitch		3
	915113-6	Nut, Eslok $\frac{3}{8}$ -16		3
3.010 TRANSMISSION 6-SPEED (PLATE 3.1)				
3-10	8163	Case — R.H.	12, 14	1
	101761	Case — R.H.	8, 10	1
	6941	Case — L.H.	12, 14	1
	3901	Case — L.H.	8, 10	1
	908043-4	Bolt, $\frac{3}{8}$ -16 x $3\frac{1}{2}$ Lower Rear		1
	908038-4	Bolt, $\frac{3}{8}$ -16 x 2		5
	915113-6	Nut, $\frac{3}{8}$ -16 Eslok		6
	943460	Plug, $\frac{1}{4}$ " Pipe Oil Drain		1
	943420	Plug, $\frac{3}{8}$ " Pipe		1
3-11	1533	Bearing — Ball $1\frac{1}{2}$ " I.D.		2
3-12	1532	Bearing — Needle 1" I.D.		2
3-13	1542	Bearing — Needle $\frac{5}{8}$ " I.D.		1
3-14	1526	Bearing — Needle $1\frac{1}{8}$ " I.D.	12, 14	2
3-14	1528	Bearing — Needle 1" I.D.	8, 10	2
3-15	1529	Bearing — Needle $\frac{3}{4}$ " I.D.		1
3-16	100442	Seal — $\frac{3}{8}$ Shaft		1
3-17	100443	Seal — $1\frac{1}{8}$ " Axle	12, 14	2
3-17	100863	Seal — 1" Axle	8, 10	2
3-18	3915	Pin, Dowel		2
3-19	1523	Bearing — Needle $\frac{3}{4}$ " I.D.		1
3-20	1531	Bearing — Needle $\frac{5}{8}$ " I.D.		1
3-21	100441	Seal — Brake Shaft		1
3-22	8050	End Cap R.H.	12, 14	1
3-22	8051	End Cap L.H.	12, 14	1
3-22	101053	Case, Differential	8, 10	2
	908138-4	Bolt, $\frac{3}{8}$ -16 x $3\frac{1}{4}$	12, 14	5
	908146	Bolt, $\frac{3}{16}$ -18 x $3\frac{1}{4}$	8, 10	4
	915663-4	Nut, $\frac{3}{16}$ -18 E.S.	12, 14	5
	915662-4	Nut, $\frac{3}{16}$ -18 E.S.	8, 10	4
3-23	7196	Gear, Differential Ring	12, 14	1
3-23	3906	Gear, Differential Ring	8, 10	1
3-24	8056	Gear, Differential Pinion	12, 14	10
3-24	101623	Gear, Differential Pinion	8, 10	4
3-25	7200	Body	12, 14	2
	933209	Roll Pin $\frac{1}{4}$ x $\frac{1}{2}$	12, 14	4
3-26	7235	Spring, Cylindrical	12, 14	1
3-27	8053	Gear, Axle	12, 14	2
3-27	3908	Gear, Axle	8, 10	2
3-28	7199	Washer, Thrust	12, 14	2
3-29	7202	Axle, R.H.	12, 14	1
3-29	7203	Axle, L.H.	12, 14	1
3-29	5961	Axle	8, 10	2
3-30	7169	Snap Ring	12, 14	2
3-30	7939	Snap Ring	8, 10	2
3-31	7201	Shaft, Input		1
3-32	7418	Washer, Thrust		1
3-33	7204	Gear and Spline		1
3-34	1518	Bearing, Needle $\frac{5}{8}$ " I.D.		4
3-35	5175	Pinion — Gear and Spline		1
3-36	7205	Gear, Sliding		1
3-37	7206	Gear, Reduction		1
3-38	7207	Bearing — Needle $\frac{3}{8}$ " I.D. x $\frac{1}{2}$		2
3-39	7208	Shaft — Reduction		1
3-40	7209	Shift Fork		1
3-41	3517	Ball-Stop		3
3-42	3518	Spring — Stop		2
3-43	1243	Plug		1
3-44	7213	Bolt — Detent		1
3-45	7214	Lever — Shift		1
3-46	5173	Gear — Hi and 2nd		1
3-47	5174	Gear — Low and Reverse		1
3-48	5615	Rail — Front Shift		1
3-49	5616	Rail — Rear Shift		1
3-50	3503	Shift Fork		2
	933156	Roll Pin $\frac{1}{8}$ x 1"		2
3-51	5614	Pin, Shift Stop		1

ITEM NO.	PART NO.	DESCRIPTION	MODEL APPLICATION	NO. REQ'D.
3-52	7269	Gear and Bearing, Complete, Cluster	All Models unless otherwise shown	1
3-53	3525	Gear — Cluster		1
3-54	1504	Bearing — Bronze $\frac{3}{4}$ " I.D.		2
3-55	3527	Gear — Reduction		1
3-56	9840	Shaft — Cluster Gear and Brake		1
	937014	Key — #9 Woodruff		1
3-57	4204	Gear — Reverse Idler		1
3-58	1516	Bushing — Bronze $\frac{1}{2}$ " I.D.		1
3-59	3909	Shaft		1
3-61	102703	Nipple — $\frac{1}{2}$ " x $1\frac{1}{2}$ " Pipe		1
3-63	101847	Dipstick — Assy.		1
3-65	3912	Gasket — Case		1
3-66	5632	Shift Stick		1
3-67	1239	Set Screw — Dog Point $\frac{1}{4}$ -20 x $\frac{3}{4}$		1
	915111-4	Nut $\frac{1}{4}$ -20		1
3-68	3577	Boot		1
3-69	102871	Knob		2
3-70	7217	Handle — Shift Hi and Low Range		1
	933184	Roll Pin $\frac{3}{16}$ x $\frac{3}{4}$		1
3-71	9547	Washer — Thrust		1
3-72	101626	Gear 44T		1
3-73	101625	Gear 11T		1
5.000 FRONT AXLE AND STEERING (PLATE 5.1)				
5-01	5638	Axle Assy. — Front		1
	1030	Fitting — Grease		2
	1481	Fitting — Grease		1
5-02	6216	Pin and Plate Assy.		1
	908015-4	Bolt, $\frac{5}{16}$ -18 x $\frac{1}{2}$		1
	920082-4	Lockwasher, $\frac{5}{16}$		1
5-03	5630	Spindle Assy. R.H.		1
	5631	Spindle Assy. L.H.		1
	5618	E-Ring		3
5-11	102592	Ball Joint Assy. R.H.		1
	102593	Ball Joint Assy. L.H.		1
	915002-6	Nut, Eslok $\frac{3}{8}$ -24		4
5-16	6472	Bearing and Housing		1
	908034-4	Bolt, $\frac{3}{8}$ -16 x 1		2
	915113-6	Nut, Eslok $\frac{3}{8}$ -16		2
5-17	6469	Shaft Assy., Lower Steering		1
	5210	Washer, Shim (.015)		1
	1278	Washer, Shim (.050)		1
	932035-4	Cotter Pin, $\frac{3}{16}$ x $1\frac{1}{4}$		1
5-20	7896	Washer, Spring		1
5-25	6396	Support Assy., Lower Steering		1
	908035-4	Bolt, $\frac{3}{8}$ -16 x $1\frac{1}{4}$		2
	915113-6	Nut, $\frac{3}{8}$ -16 Eslok		2
	1030	Fitting — Grease		1
5-26	6397	Bushing, Lower Shaft		1
5-28	101442	Bushing, Steering Column		1
5-32	102862	Shaft Assy., Upper Steering		1
5-33	1085	Collar, Set		1
	909848-5	Set Screw, $\frac{1}{4}$ -20 x $\frac{1}{4}$ Nylok		1
5-35	7468	Collar, Steering		1
5-39	102715	Wheel, Steering		1
	933221	Pin Spirol $\frac{1}{4}$ x 2		1
	7896	Washer, Spring		1
5-44	102856	Insert, Steering Wheel		1
6.000 BRAKE/CLUTCH LINKAGE (PLATE 6.2)				
6-01	102717	Drum — Brake		1
	908032-5	Bolt, $\frac{3}{8}$ -16 x $\frac{3}{4}$ Nylok		1
	2844	Washer, Special		1
6-02	9593	Brake Band Assy.		1
	908002-4	Bolt, $\frac{1}{4}$ -20 x $\frac{5}{8}$ Brake Anchor		2
	920081-4	Lockwasher, $\frac{1}{4}$		2

ITEM NO.	PART NO.	DESCRIPTION	MODEL APPLICATION	NO. REQ'D.
6-03	9598	Plate — Park Brake Stop	All Models	1
6-04	9599	Rod — Brake	unless otherwise shown	1
	915663-4	Nut, $\frac{3}{8}$ -16 E.S.		1
	932017-4	Cotter Pin, $\frac{1}{8}$ x 1		1
6-07	1861	Stud — Clutch Rod		1
	932017-4	Cotter Pin, $\frac{1}{8}$ x 1		2
6-08	5544	Handle — Parking Brake		1
6-20	102367	Pedal		1
6-22	1085	Collar		1
	909848-5	Set Screw, $\frac{1}{4}$ -20 x $\frac{1}{4}$ Nylok		1
6-22A	7896	Washer, Spring		1
6-23	2593	Rod and Guide Assy.		1
	932017-4	Cotter Pin, $\frac{1}{8}$ x 1		1
6-26	9757	Idler Arm Assy.		1
	933158	Roll Pin, $\frac{1}{8}$ x $1\frac{1}{4}$		1
6-28	4899	Arm — Clutch Rod Pivot		1
	933158	Roll Pin, $\frac{1}{8}$ x $1\frac{1}{4}$		1
6-29	7451	Pulley — Idler		1
	911404-4	Bolt, $\frac{3}{8}$ -16 x $1\frac{5}{8}$ Special		1
	915113-6	Nut, $\frac{3}{8}$ -16 Eslok		1
6-32	1014	Spring		1
6-64	3765	Washer, $\frac{1}{2}$ " Dia. Special		1

7.000 HITCH ASSEMBLIES (PLATE 7.1)

7-12	101711	Hitch — Front		1
7-13	101741	Latch Assy. — Hitch		1
7-14	101750	Rod, Latch Pivot		1
7-15	101751	Rod, Lock		1
	100398	E-Ring — $\frac{3}{8}$		5
7-16	101707	Lock		1
7-17	8616	Spring		1
7-18	3680	Cap		1
7-20	1644	Hitch		1
7-22	1647	Pin — Hitch Mounting		1
	979120-4	Spacer		2
	936125	Snap Ring, $\frac{3}{4}$ Shaft		2
	1813	Tool Pin		1
7-24	102644	Plate — R.H. & L.H.		2
7-25	102672	Rod — Lock		1
7-26	101017	Lock		1

7.030 LIFT LINKAGE (PLATE 7.2)

7-30	5448	Lift Lever Assy.		1
	933506-4	Hairpin Cotter, Mounting Block		1
	908015-4	Bolt, $\frac{5}{16}$ -18 x $\frac{1}{2}$ Mounting		3
	920082-4	Lockwasher, $\frac{3}{16}$		3
7-31	3680	Cap — Rod End		2
7-32	6542	Grip — Handle		1
7-33	3642	Spring		1
7-35	3778	Guide — Plunger Rod		1
7-36	5449	Plunger Rod		1
7-37	4438	Plunger		1
	933168	Roll Pin, $\frac{5}{32}$ x $1\frac{1}{16}$		1
7-38	102797	Plug		1
7-40	5640	Quadrant		1
7-41	2179	Rod — Height Control		1
7-42	5280	Knob — Height Control		1
	926715-4	Bolt, $\frac{3}{8}$ -16 x $\frac{3}{4}$ S.T.		2
7-43	8277	Conduit Assy.		1
7-56	102373	Lift Bar Assy.		1
7-57	6229	Bearing		1
	5701	E-Ring $\frac{1}{2}$ "		1
7-58	102385	Rod, Lift		1
7-59	6739	Trunnion		1
	933504-4	Hairpin Cotter		1
	932008-4	Cotter Pin, $\frac{3}{32}$ x $\frac{3}{4}$		1
	915663-4	Nut, $\frac{3}{8}$ -16 E.S.		1

ITEM NO.	PART NO.	DESCRIPTION	MODEL APPLICATION	NO. REQ'D.
8.000 SHEET METAL AND COVERS (PLATE 8.1)				
8-01	9699	Hood Assy.	All Models	1
8-05	101732	Bracket — Grille Pivot — R.H.	unless otherwise shown	1
	101733	Bracket — Grille Pivot — L.H.		1
	900037-4	Bolt, $\frac{5}{16}$ -18 x $\frac{3}{4}$ Carriage		4
	915112-6	Nut, $\frac{5}{16}$ -18 Eslok		4
8-06	101710	Rod — Pivot		1
	100398	Ring, Retainer		2
8-06A	101850	Rod — Hood Stop		1
	932000-4	Cotter Pin, $\frac{1}{16}$ x $\frac{1}{2}$		2
8-07	5667	Bumper — Rubber		2
8-09	5467	Lever — Hood Latch		1
	933182	Roll Pin, $\frac{3}{16}$ x $\frac{5}{8}$		1
8-10	5469	Knob — Hood Latch		1
8-11	5468	Roller — Steel		2
8-12	5522	Rod — Hood Latch		1
	5466	Speed Nut, $\frac{1}{4}$ Push On $\frac{1}{2}$ Dia.		2
8-15	5438	Ornament — Hood		1
	5437	Speed Nut, $\frac{1}{8}$ Dia. Push On		2
	100646	Washer, Rubber		2
8-16	7416	Plate — Escutcheon	8, 10	1
	7721	Clip	8, 10	4
	100646	Washer Rubber	8, 10	4
8-30	102795	Hoodstand Assy.		1
	908034-4	Bolt, $\frac{3}{8}$ -16 x 1 To Frame		4
	915113-6	Nut, $\frac{3}{8}$ -16 Eslok		4
	908032-4	Bolt, Tool Box $\frac{3}{8}$ -16 x $\frac{3}{4}$		2
	920009-4	Washer $\frac{3}{8}$ SAE		2
	920083-4	Lockwasher $\frac{3}{8}$		2
8-32	6825	Cover — Dust		1
	908017-4	Bolt, $\frac{5}{16}$ -18 x $\frac{3}{4}$		2
	915112-6	Nut, $\frac{5}{16}$ -18 Eslok		2
8-34	7220	Plate, Cover		1
	960151-4	Bolt, $\frac{1}{4}$ -20 x $\frac{1}{2}$ Whizlock		2
8-37	5450	Housing — Control Panel		1
	960152-4	Bolt, $\frac{1}{4}$ -20 x $\frac{5}{8}$ Whizlock		4
	915111-6	Nut, $\frac{1}{4}$ -20 Eslok		4
8-40	102864	Panel — Dash		1
8-41	101841	Plate — Backup		1
	5442	Speednut # 10-16 Tinnerman		4
	102168	Screw S.T. 10-16 x $\frac{3}{4}$ "		4
8-44	5606	Tape — Hood Insulation		AR
8-45	100498	Support — Fuel Tank		1
	926925-4	Screw $\frac{5}{16}$ -18 x $\frac{3}{4}$ S.T.		4
	3023	Clip	10, 12, 14	AR
8-46	102304	Bracket — Seat Pivot		1
	908032-4	Bolt, $\frac{3}{8}$ -16 x $\frac{3}{4}$		2
	915113-6	Nut, $\frac{3}{8}$ -16 Eslok		2
8-47	101344	Bracket Instrument		1
	MW-4475	Clip Tinnerman $\frac{1}{4}$ -20		2
	960151-4	Bolt, Whizlock $\frac{1}{4}$ -20 x $\frac{1}{2}$		2
8-71	102370	Fender		1
8-80	7879	Bushing — Bronze		2
8-81	4937	Spacer		2
	908035-4	Bolt, $\frac{3}{8}$ -16 x $1\frac{1}{4}$		2
	915663-4	Nut, $\frac{3}{8}$ -16 E.S.		2
	920009-4	Washer, $\frac{3}{8}$ — SAE		2
8-84	7464	Latch — Fender		1
8-85	MW-8863	Spring — Latch		1
	5977	Bushing		1
	7617	Pin, $\frac{5}{16}$ Rod End		1
	932008-4	Cotter Pin, $\frac{3}{32}$ x $\frac{3}{4}$		1
8-86	7616	Bracket — Fender Latch		1
	908005-4	Screw, $\frac{1}{4}$ -20 x 1		2
	915111-6	Nut, $\frac{1}{4}$ -20 Eslok		2
8-87	7882	Stop — Fender Latch		1
8-90	7463	Bracket — Foot Rest		1
	926694-4	Screw $\frac{5}{16}$ -18 x $\frac{3}{8}$ S.T.		2

ITEM NO.	PART NO.	DESCRIPTION	MODEL APPLICATION	NO. REQ'D.	ITEM NO.	PART NO.	DESCRIPTION	MODEL APPLICATION	NO. REQ'D.
8-91	102798	Footrest — R.H.	All Models	1	10-33	101349	Clamp, Hose, Adjustable	All Models	1
	102799	Footrest — L.H.	unless otherwise shown	1	10-34	950154	Clamp, Corbin 1/2"	unless otherwise shown	5
	908017-4	Bolt, 5/16-18 x 3/4 To Bracket		4	10-35	101861	Clamp, Hose		AR
	915662-4	Nut, 5/16-18 E.S.		4	908017-4	Bolt, 5/16-18 x 3/4		10, 12, 14	1
	960175-4	Bolt, 5/16-18 x 1/2 To Belt Guard		3	908019-4	Bolt, 5/16-18 x 1		8	1
8-92	7456	Bracket — Footrest Anchor		2	920008-4	Washer, 5/16 SAE		10, 12, 14	1
	900037-4	Bolt, 5/16-18 x 3/4 Carriage		2	915112-6	Nut, 5/16-18 Eslok			1
	915662-4	Nut, 5/16-18 E.S.		2	10-40	102258	Muffler Assy.	10, 12, 14	1
8-94	102248	Bracket — Fender (Front)		1	10-44	102645	Clamp — Muffler	10, 12, 14	2
	900037-4	Bolt, 5/16-18 x 3/4 Carriage		2	10-45	103096	Nipple	8	1
	915112-6	Nut, 5/16-18 Eslok		2	10-46	103055	Muffler	8	1
	5667	Bumper, Rubber		2	10-49	102228	Tube Assy. Inlet	10, 12, 14	1
8-95	102249	Bracket — Fender Hinge		1					
8-100	101958	Belt Guard Assy.		1					
	908045-4	Bolt, 1/2-14 x 3/4 Eng. Mount	10, 12, 14	1					
	908032-4	Bolt, 3/8-16 x 3/4	8	1					
	920084-4	Lockwasher 1/16	10, 12, 14	1					
	920040-4	Washer 3/16	10, 12, 14	1					
	920033-4	Lockwasher 3/8	8	1					
	920039-4	Washer 3/8	8	1					
8-101	102788	Pad — Footrest R.H.		1					
8-102	102789	Pad — Footrest L.H.		1					
8-103	102810	Channel — Wire		1					
8-104	9690	Spacer		1					
9.000 ENGINE (PLATE 9.1)					11.000 ELECTRICAL SYSTEM (PLATE 11.1)				
9-02	101867	Engine 8 H.P. Kohler	8	1	11-01	102953	Harness — Wiring (Main)		1
	908035-4	Bolt, 3/8-16 x 1/4 Eng. Mount	8	4		100571	Tie — Wire Retainer		AR
	915663-4	Nut, 3/8-16 E.S.	8	4		101446	Insulator (Plastic Shield)		1
9-02	101954	Engine 10 H.P. Kohler	10	1	11-02	101971	Grommet Rubber (11. Plote 8.1)		1
	101955	Engine 12 H.P. Kohler	12	1	11-03	100335	Wire, Battery to Ground	8	1
	101956	Engine 14 H.P. Kohler	14	1		100446	Wire, Battery to Ground	10, 12, 14	1
	908034-4	Bolt, 3/8-16 x 1 Eng. Mount	10, 12, 14	2	11-04	101972	Wire, Battery to Solenoid	10, 12, 14	1
	908036-4	Bolt, 3/8-16 x 1/2	10, 12, 14	2		8655	Wire, Battery to Solenoid	8	1
	915663-4	Nut, 3/8-16 E.S.	10, 12, 14	2	11-05	8655	Wire, Solenoid to Starter		1
	920083-4	Lockwasher 3/8	10, 12, 14	2	11-06	102250	Wire Assy. — Interlock Sw. to Solenoid		1
9-03	102317	Base — Engine Mounting	8	1	11-07	102251	Wire Assy. — Interlock Sw. to Harness		1
	908034-4	Bolt, 3/8-16 x 1 to Frame	8	4	11-10	101846	Fused Connector	12, 14	1
	915663-4	Nut, 3/8-16 E.S.	8	4		101639	Fuse SFE 20 Amp., Box of 5	12, 14	1
9-07	5222	Elbow 3/8 x 90°		1	11-13	7226	Wire Assy. & Terminal Head Light	12, 14	2
9-08	943335-4	Nipple 3/8 x 5		1	11-14	103137	Wiring Harness Head & Tail Light	12, 14	1
9-09	5224	Cap 3/8		1		8519	Clip	12, 14	AR
10.000 FUEL AND EXHAUST SYSTEMS (PLATE 10.1)					11-20	101917	Switch — Ignition		1
10-02	101837	Choke Control Assy.		1		101884	Nut — Hex Special 5/8-32		1
10-03	101834	Throttle Control Assy.	10, 12, 14	1		920160-4	Lockwasher 3/8		1
	8713	Screw, Pan Head 10-24 x 3/8		4	11-21	7262	Key — Ignition Switch		2
	915964-4	Nut — Keps 10-24		4	11-24	102138	Switch — Light	12, 14	1
10-04	102186	Knob, Choke		1		8785	Nut, Knurled 1 1/2-32	12, 14	1
10-04A	102185	Knob, Throttle		1		8786	Nut, Hex 1 1/2-32	12, 14	1
10-13	100452	Strap, Engine (PTO Side)		1		935090-4	Plug Button	8, 10	1
	920007-4	Washer — 1/4 SAE	8	1	11-25	102046	Ammeter		1
	910790-4	Screw — 10-24 x 3/8	8	2		102047	Clamp, Mounting		1
	915538-6	Nut — 10-24 Eslok	8	2		5924	Nut, 10-32 E.S.		2
10-14	100729	Clip, To Fuel Tank Support		2	11-26	8658	Solenoid		1
	2879	Clip, Choke and Throttle	10, 12, 14	2		960151-4	Bolt, 1/4-20 x 1/2 Whizlock		2
	7922	Clip	8	2	11-28	101450	Regulator — Rectifier		1
	960150-4	Screw — 1/4-20 x 3/8 Whizlock	10, 12, 14	1		908003-4	Bolt, 1/4-20 x 3/4		2
	5431	Nut — Special 1/4-20	10, 12, 14	1		915111-6	Nut, 1/4-20 Eslok		2
	908001-4	Bolt, 1/4-20 x 1/2	10, 12, 14	1	11-29	102371	Plate — Coil Mounting	8	1
	915111-6	Nut, 1/4-20 Eslok	10, 12, 14	1	11-30	101845	Switch — Interlock		1
10-20	100572	Tank, Fuel		1		102277	Nut — Switch 3/16-18		1
10-21	102321	Cap, Fuel Tank		1	11-31	101827	Bracket — Switch Mounting		1
10-22	100427	Wire, Tank Hold Down		1		908034-4	Bolt — 3/8-16 x 1		1
10-25	6949	Spring		1		915113-6	Nut — 3/8-16 Eslok		1
10-30	8023	Valve, Fuel		1	11-40	100502	Battery	8	1
	5189	Spacer		1		908003-4	Bolt, 1/4-20 x 3/4 Bat. Term.	8	2
10-31	100327	Filter Assy. — Fuel		1		920007-4	Nut, 1/4-20 Bat. Term.	8	2
10-32	*9212	Hose—Fuel—Valve to Tank 6.5"		1		915111-6	Washer, 1/4	8	2
	*8714	Hose—Fuel—Tank to Filter 8.5"	8	1	11-40	10050	Battery		6
	*9147	Hose—Fuel—Valve to Filter 8.5"	10, 12, 14	1	11-41	100438	Cop — Battery Cell	10, 12, 14	1
	*102604	Hose—Fuel—Filter to Pump 16"	8	1	11-42	9155	Cover — Battery Terminal — Positive	10, 12, 14	1
	*1796	Hose—Fuel—Filter to Pump 19 3/4"	10, 12, 14	1	11-45	7781	Battery Box Assy.	10, 12, 14	1
	*102713	Hose—Fuel—Pump to Carb. 3"	8	1		4953	Battery Box Assy.	8	1
	*8025	Hose—Fuel—Pump to Carb. 5.5"	10, 12, 14	1		915112-6	Nut, 3/16-18 Eslok		2
	*Cut from 6554				11-46	7779	Link — Battery Clamp	10, 12, 14	1
						4958	Link — Battery Clamp	8	1
						915111-6	Nut, 1/4-20 Eslok		2

ITEM NO.	PART NO.	DESCRIPTION	MODEL APPLICATION	NO. REQ'D.	ITEM NO.	PART NO.	DESCRIPTION	MODEL APPLICATION	NO. REQ'D.
<u>11.060 LIGHTS AND CIGAR LIGHTER (PLATE 11.2)</u>					<u>14-55 6659 Retainer, Bearing Race</u>				
			All Models unless otherwise shown		960151-4	Bolt, 1/4-20 x 1/2 Whizlock	All Models unless otherwise shown	2	4
11-60	7223	Reflector Hd. Light & Housing & Socket	12, 14	1	14-56	6663 Seal		1	1
11-61	7227	Spring — Hd. Light Socket	12, 14	2	14-57	6662 Bearing		1	1
11-62	7228	Bulb — Hd. Light #1156	12, 14	2	14-58	9209 Housing — Clutch & Pulley		1	1
11-63	7075	Lens — Hd. Light	12, 14	1	14-59	5196 Bearing, Ball		1	1
	7229	Screw, 6-32 x 3/8 S.T. Special	12, 14	4	14-60	936032 Snap Ring, 1 3/4 Bore		1	1
11-65	7618	Connector, 3 Wire	12, 14	1	14-61	933506-4 Hairpin Cotter		1	1
	3023	Clip	12, 14	4	14-62	936125 Snap Ring, 3/4 Shaft		1	1
	938007	Bushing — Ins.	12, 14	1	14-75	102872 Shaft — Clutch		1	1
11-67	8041	Base — Tail Light W. Bulb	12, 14	1	14-76	102938 Rod — Housing		1	1
11-68	8042	Cover	12, 14	1	14-77	933172 Spirol Pin 5/32 x 1 1/8		2	1
11-69	8043	Bulb, Tail Light	12, 14	1	14-78	102941 Clevis		1	1
11-70	8044	Pad, Tail Light Mounting	12, 14	1	14-79	102956 Pin		1	1
11-71	6922	Connector — 2 Wire	12, 14	1	14-80	909880-5 Set Screw 3/8-16 x 3/4		1	1
	3023	Clip	12, 14	3	14-81	102942 Bracket — Engine		1	1
	910808-4	Bolt, Pan Hd. 10-32 x 5/8	12, 14	2	14-82	920084-4 Lockwasher 3/8		1	1
	915551-4	Nut, Hex 10-32	12, 14	2	14-83	102943 Plate		1	1
	920079-4	Lockwasher #10	12, 14	2	14-84	102704 Spacer		1	1
11-81	102189	Knob & Plug		1	14-85	908046-4 Bolt — Hex 3/8-16 x 1		1	1
11-82	5483	Retainer		1	14-86	102809 Nut Flange		1	1
11-83	5482	Socket		1	14-87	102937 Rod — Clutch		1	1
11-84	935109-4	Plug Button — Lighter		1	14-88	101161 Trunnion		1	1
<u>13.000 WHEELS AND TIRES (PLATE 13.1)</u>					<u>15.000 SEATS, DECALS, MISC. TRIM (PLATE 15.1)</u>				
13-01	9791	Wheel & Tire Assy. — Front		2	15-01	100780 Cushion — Seat One Piece	8, 10	1	
13-02	5432	Wheel & Tire Assy. — Rear	12, 14	2		101444 Tape — Foam	8, 10	2	
	100969	Wheel & Tire Assy. — Rear	8, 10	2		908015-4 Bolt, 5/16-18 x 1/2	8, 10	2	
13-03	9652	Wheel & Bearing Assy. — Front		2		908016-4 Bolt, 5/16-18 x 3/8	8, 10	2	
13-04	5433	Wheel — 12 x 7 JA		2		920082-4 Lockwasher — 3/16	8, 10	4	
	5435	Valve — Tubeless Tire		4		915932-4 Nut, High Crown 10-24	8, 10	2	
13-05	9792	Tire 16 x 6.50-8 Front		2	15-02	102033 Seat Base Assy.	12, 14	1	
13-06	5434	Tire 9 x 12 Rear	12, 14	2	15-03	9662 Spacer	12, 14	2	
	100772	Tire 7.50-12	8, 10	2		900038-4 Bolt, 5/16-18 x 1 Carriage	12, 14	4	
13-07	5512	Tube 16 x 6.50-8 (Service Only)		2		915112-6 Nut, 5/16-18 Eslok	12, 14	4	
13-08	7007	Tube 23 x 8.50-12 (Service Only)		2		101444 Tape Foam	12, 14	1	
13-11	4999	Bearing — Ball Front Wheel		2	15-04	9663 Cushion — Seat	12, 14	1	
	908033-6	Bolt, 3/8-16 x 1/8		2	960151-4	Bolt, 1/4-20 x 1/2 Whizlock	12, 14	3	
	2844	Washer		2					
	1278	Washer (.050")		2	15-05	9664 Cushion — Back	12, 14	1	
	5210	Washer (.015")		2	15-06	9665 Knob — Back Adjusting	12, 14	1	
13-15	6465	Hub, Wheel (5 Bolt)	12, 14	2		920082-4 Lockwasher	12, 14	4	
	4996	Hub, Wheel (5 Bolt)	8, 10	2		915932-4 Nut, High Crown 10-24	12, 14	2	
	909554	Set Screw 3/8-16 x 1 — Sq. Hd.		2		908016-4 Bolt, 5/16-18 x 3/8	12, 14	2	
	915236-4	Nut — Hex 3/8-16 Jam		2	15-20	102831 Decal — Hood Trim (Wheel Horse)		2	
	937022	Key — Woodruff #15		2					
13-16	1004	Lug Bolt		10	15-23	103027 Decal — 8 — 8 Speed		2	
13-21	7747	Hub Cap		2		103026 Decal — 10 — 8 Speed		2	
						103025 Decal — 12 — 8 Speed		2	
						103024 Decal — 14 — 8 Speed		2	
<u>14.000 DRIVE BELTS AND PULLEYS (PLATE 14.1)</u>									
14-01	7473	V-Belt — Drive		1	15-25	8138 Decal — Fender		1	
14-03	101875	Pulley — Engine	8	1	15-26	100614 Reflector — Fender	8, 10	1	
	7466	Pulley — Engine	10, 12, 14	1	15-32	7472 Decal — Seat Latch		1	
	6507	Key — 1/4 x 1/4 x 1/2		1	15-34	102843 Decal — Caution		1	
	909862-5	Set Screw 5/16-18 x 3/16		2	15-35	102844 Decal — Read Operator Manual		1	
14-10	7492	Pulley, Trans. Main Drive		1	15-36	102948 Decal — Hand Lift		1	
	937221	Key		1	15-37	102947 Decal — Shift Knob		1	
	909862-5	Set Screw		1	15-38	102842 Decal — Parking Brake		1	
<u>14.050 MANUAL P.T.O. (PLATE 14.3)</u>									
14-53	6655	Clutch Plate & Facing Assy.		1	15-39	102859 Decal — PTO		1	
	6656	Plate — Clutch		1					
	4365	Facing		1					
	6657	Rivet		6					
14-54	6935	Race, Bearing							

Plate 7.2

LIFT LINKAGE

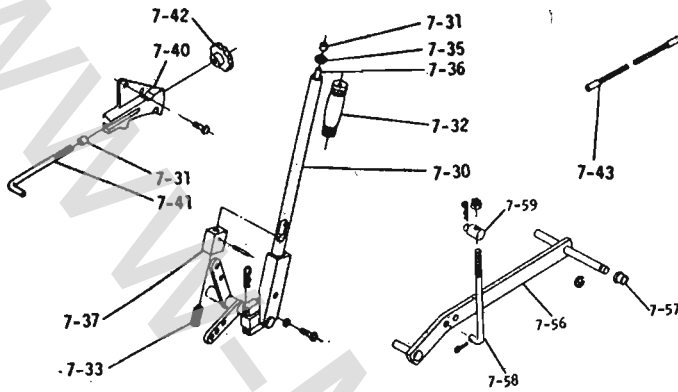


Plate 9.1

ENGINE

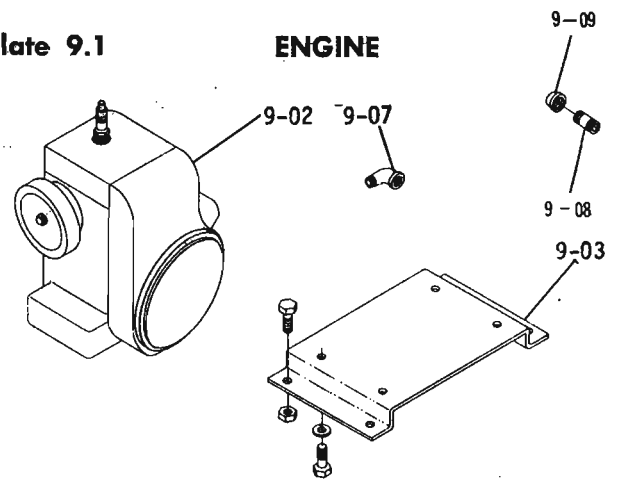


Plate 10.1

FUEL AND EXHAUST SYSTEMS

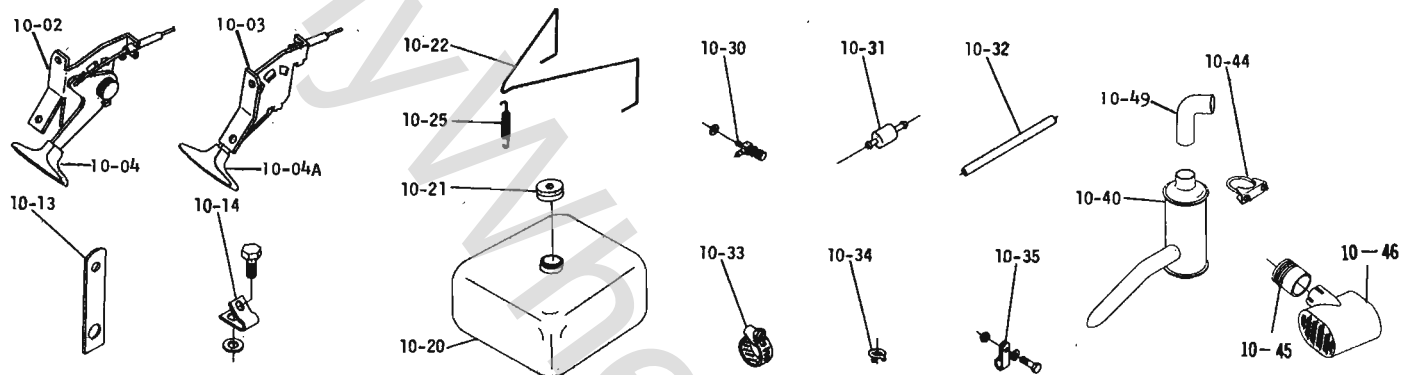


Plate 14.1

DRIVE BELTS, PULLEYS

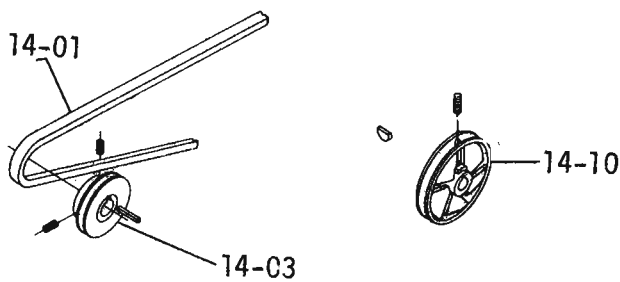


Plate 11.1

ELECTRICAL SYSTEM

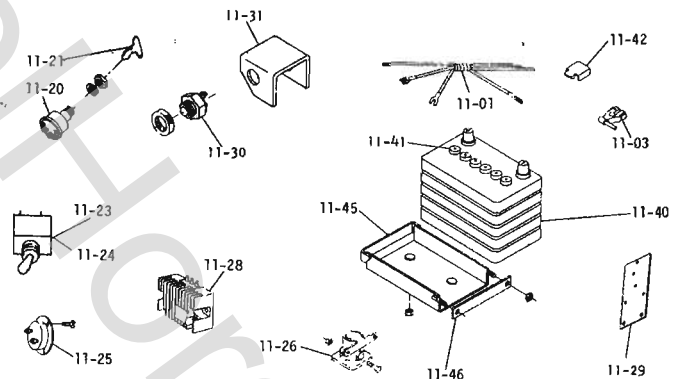


Plate 11.2 LIGHTS & CIGAR LIGHTER

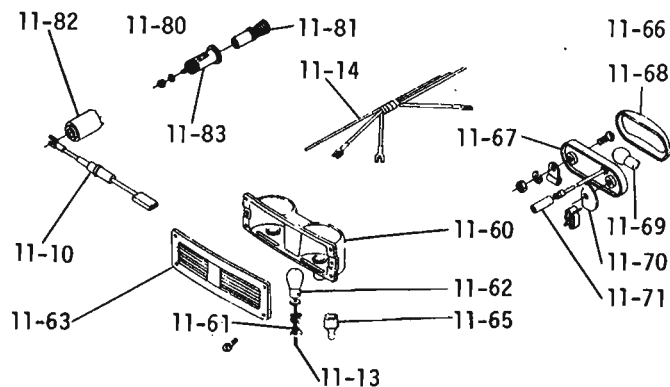


Plate 13.1

WHEELS AND TIRES

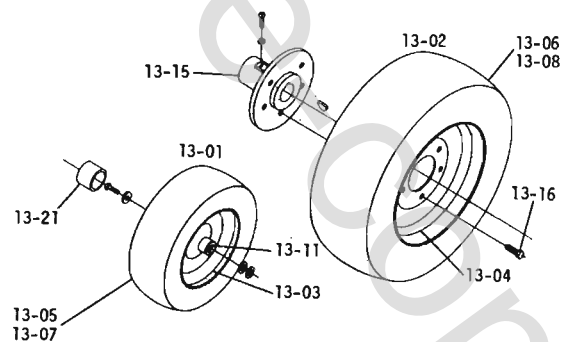


Plate 15.1 SEATS, DECALS, MISC. TRIM

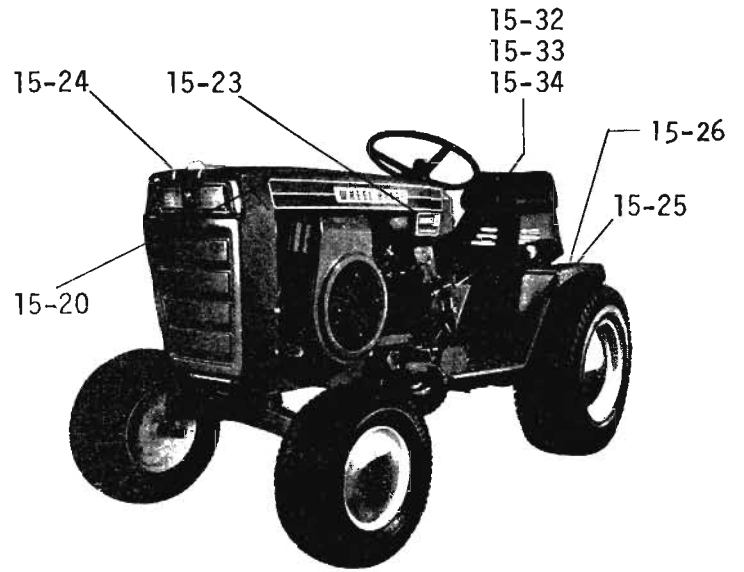
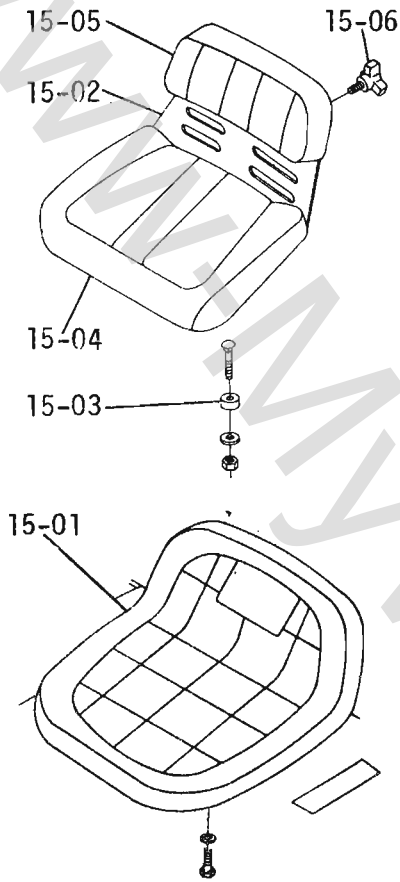
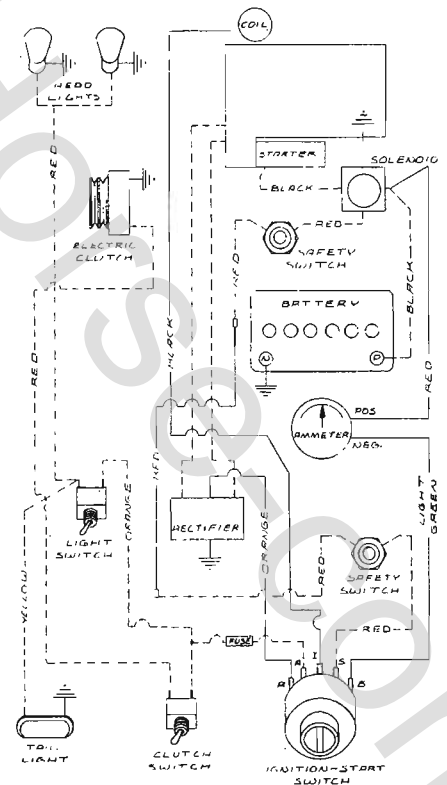
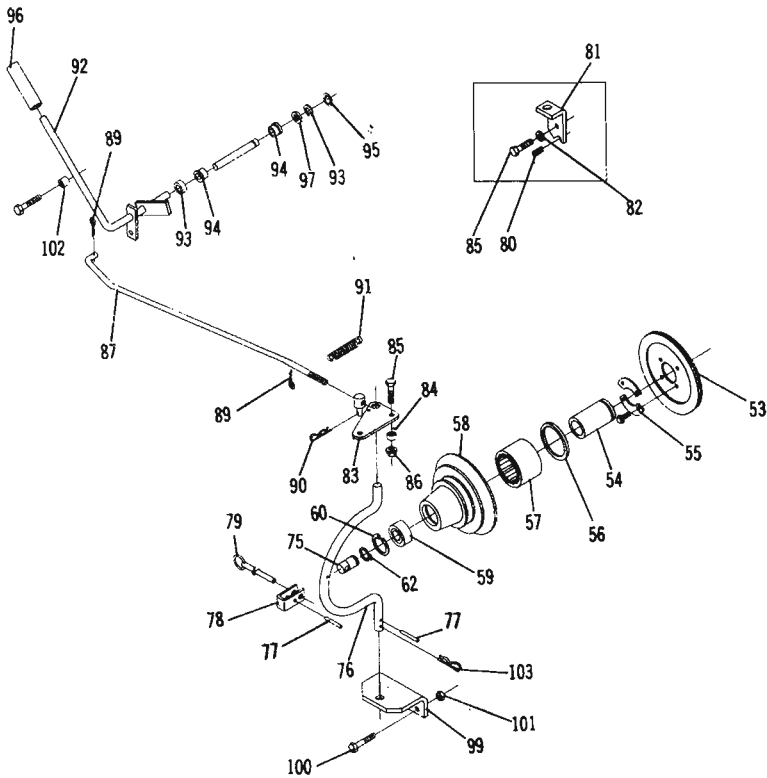
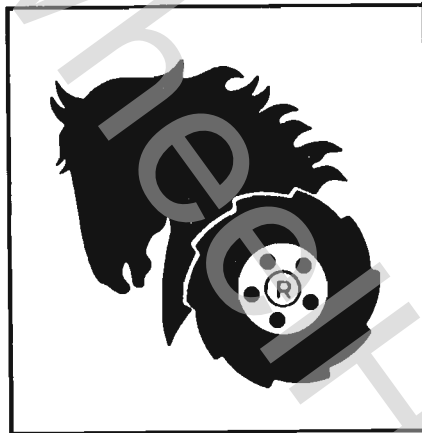


Plate 14.3 P. T. O. CLUTCH





WHEEL-HORSE PRODUCTS, INC.

South Bend, Indiana 46614