

Wheel Horse®

PARTS MANUAL

1972



CHARGER 10 CHARGER 12 BRONCO 14

PIONEERS IN TRACTORING

MODEL AND SERIAL NUMBERS

Serial and model numbers are necessary to correctly identify your tractor and engine whenever you need repair parts. The tractor model and serial numbers are on a plate attached to the hood stand just below the control panel.

The engine model and serial numbers are on a plate attached to the engine shroud.

For your convenience and ready reference, enter the model and serial numbers in the spaces below.

Tractor Model No.

Tractor Serial No.

Engine Model & Spec. No.

Engine Serial No.

TO ORDER PARTS FROM THIS MANUAL

1. Find the illustration of the desired part and note its identifying number.

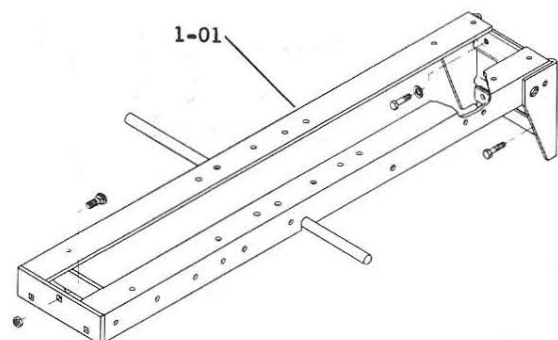
2. Locate the item number in the parts listing and determine the part number and description.
3. Make sure the part to be ordered is for your model tractor as designated in the Model Application Column.
4. Order the part from your local authorized Wheel Horse Dealer.

WHEEL-HORSE PRODUCTS, INC.

515 W. Ireland Road, South Bend, Indiana 46614

Plate 1.1

FRAME



TYPICAL TRANSAXLE - TYPE B

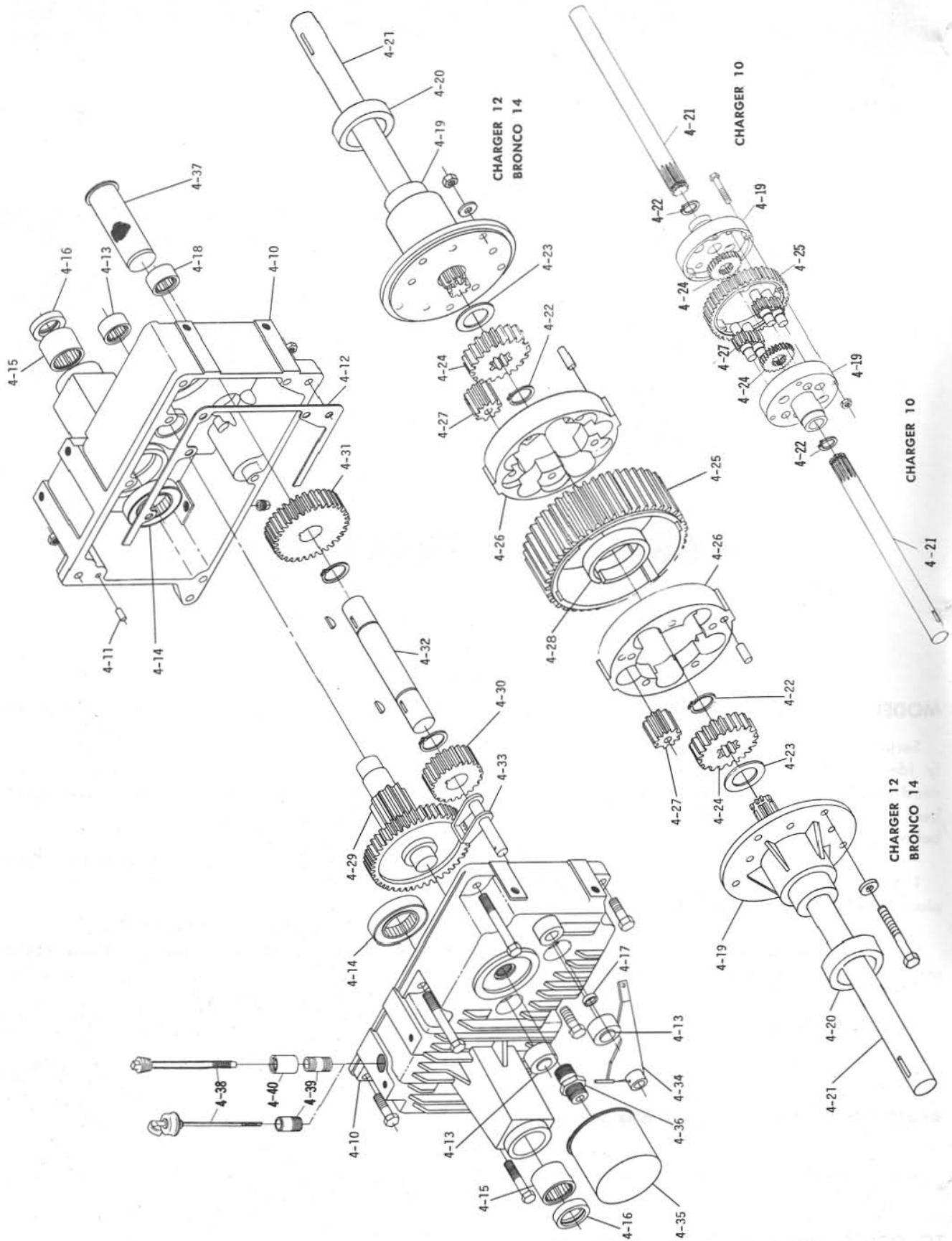


Plate 4.4

HYDROGEAR

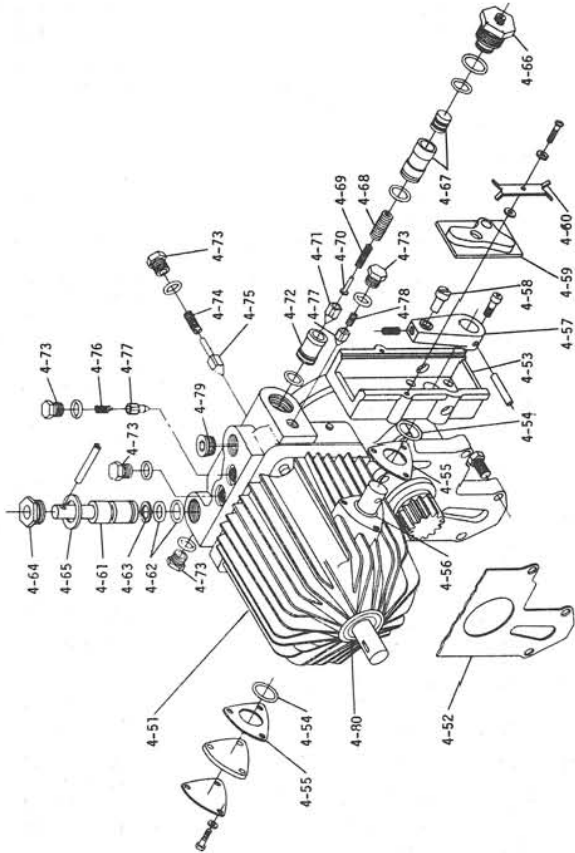


Plate 5.2 **FRONT AXLE AND STEERING**

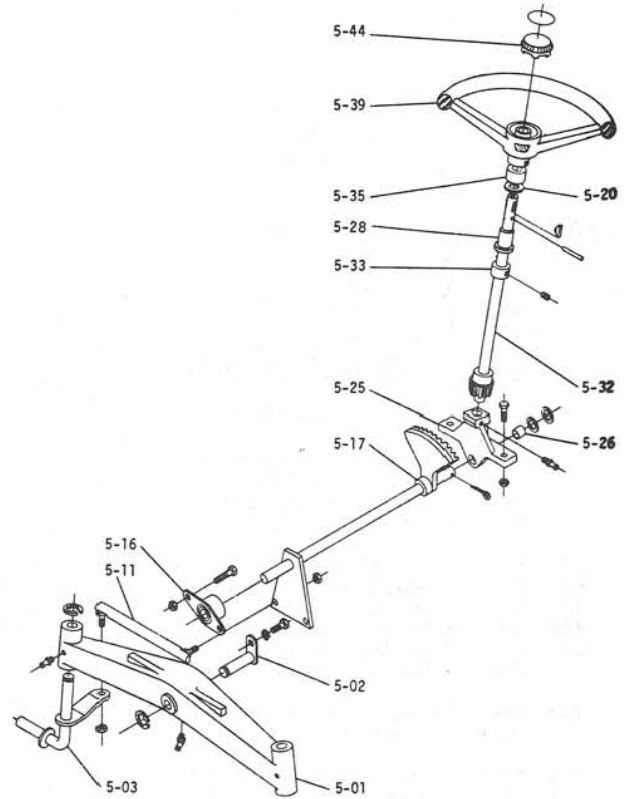


Plate 6.5 **BRAKE, SPEED CONTROL LINKAGE**

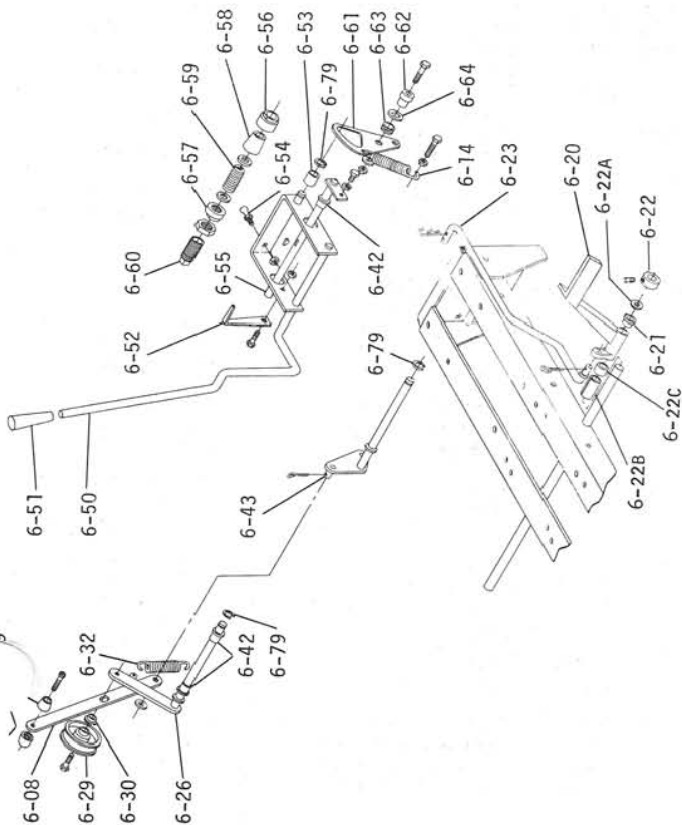


Plate 7.1 **HITCHES**

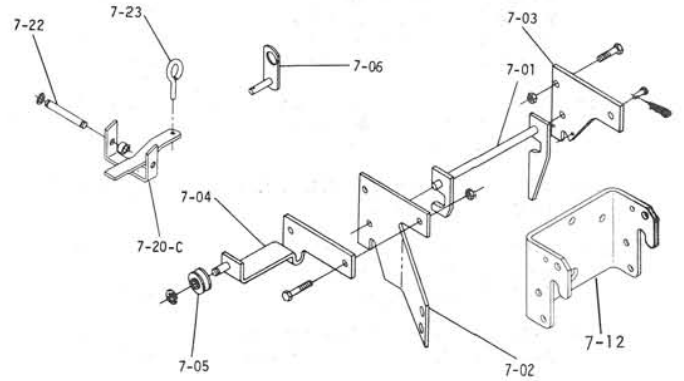
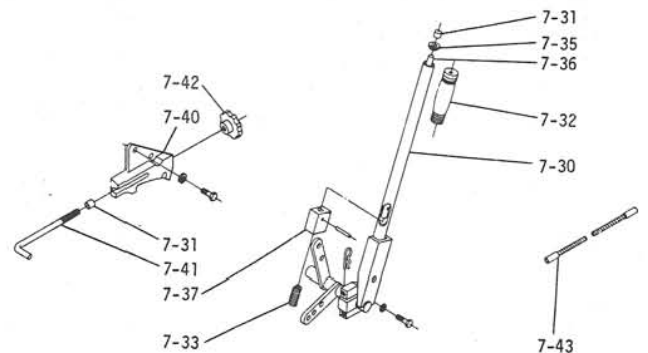


Plate 7.2 **LIFT LINKAGE**



ITEM NO.	PART NO.	DESCRIPTION	MODEL APPLICATION	NO. REQ'D.
1.000 FRAME ASSEMBLY (PLATE 1.1)				
1-01	101794	Frame Assy.	C10, C12, B14	1
	908032-4	Bolt, $\frac{3}{8}$ -16 x $\frac{3}{4}$ Trans. Upper	C10, C12, B14	2
	920083-4	Lockwasher, $\frac{3}{8}$ Upper Bolts	C10, C12, B14	2
	908033-6	Bolt, Eslok $\frac{3}{8}$ -16 x $\frac{7}{8}$ Trans. Lw.	C10, C12, B14	2
	900063-9	Bolt, Carriage $\frac{3}{8}$ -16 x 1 Ft. Hitch	C10, C12, B14	3
	915113-6	Nut, Eslok $\frac{3}{8}$ -16	C10, C12, B14	3
4.010 TRANSAXLE (PLATE 4.3)				
4-10	8046	Case — R.H.	C12, B14	1
	8047	Case — L.H.	C12, B14	1
	5956	Case — R.H.	C10	1
	5957	Case — L.H.	C10	1
	943460	Plug, $\frac{1}{4}$ Pipe — Oil Drain	C10, C12, B14	1
	908143-4	Bolt, $\frac{3}{8}$ -16 x 5 Top Center and Front	C10, C12, B14	2
	908043-4	Bolt, $\frac{3}{8}$ -16 x $3\frac{1}{2}$ Lower Rear	C10, C12, B14	1
	908040-4	Bolt, $\frac{3}{8}$ -16 x $2\frac{1}{2}$ Lower Center and Front	C10, C12, B14	2
	908039-4	Bolt, $\frac{3}{8}$ -16 x $2\frac{1}{4}$ Top Rear	C10, C12, B14	1
	915113-6	Nut, $\frac{3}{8}$ -16 Nylok	C10, C12, B14	6
4-11	3915	Pin — Dowel	C10, C12, B14	2
4-12	5999	Gasket — Case	C10, C12, B14	1
4-13	1532	Bearing — Needle 1" I.D.	C10, C12, B14	3
4-14	1533	Bearing — Ball $1\frac{1}{2}$ " I.D.	C10, C12, B14	2
4-15	1526	Bearing — Needle $1\frac{1}{8}$ " I.D.	C12, B14	2
	1528	Bearing — Needle 1" I.D.	C10	2
4-16	6449	Seal — $1\frac{1}{8}$ " I.D.	C12, B14	2
	100607	Seal — 1" I.D.	C10	2
4-17	5959	Seal — Brake Shaft $\frac{1}{2}$ " I.D.	C10, C12, B14	1
4-18	5960	Bearing — Needle 1" I.D.	C10, C12, B14	1
4-19	8050	End Cap — R.H.	C12, B14	1
	8051	End Cap — L.H.	C12, B14	1
	101053	Case Differential	C10	2
	908138-4	Bolt, $\frac{3}{8}$ -16 x $3\frac{1}{4}$	C12, B14	5
	908146	Bolt, $\frac{3}{8}$ -18 x $3\frac{1}{4}$	C10	4
	915663-4	Nut, $\frac{3}{8}$ -16 E.S.	C12, B14	5
	915662-4	Nut, $\frac{3}{8}$ -18 E.S.	C10	4
4-21	7202	Axle — Rear — R.H.	C12, B14	1
	7203	Axle — Rear — L.H.	C12, B14	1
	5961	Axle — Rear	C10	2
4-22	7169	Snap Ring — H.D. External	C12, B14	2
	7939	Snap Ring	C10	2
4-23	7199	Washer — Thrust	C12, B14	2
4-24	8053	Gear — Axle	C12, B14	2
	3908	Gear — Axle	C10	2
4-25	7196	Gear — Differential Ring	C12, B14	1
	3906	Gear — Differential Ring	C10	1
4-26	7200	Body Core	C12, B14	2
	933209	Roll Pin, $\frac{1}{4}$ x $\frac{1}{2}$	C12, B14	4
4-27	8056	Gear — Differential Pinion	C12, B14	10
	101623	Gear — Differential Pinion	C10	4
4-28	7235	Spring — Cylindrical	C10, C12, B14	1
4-29	6452	Gear — 44T, 11T	C10, C12, B14	1
4-30	5963	Gear 22T	C10, C12, B14	1
4-31	5964	Gear — 33T	C10, C12, B14	1
4-32	5965	Shaft — 1" Dia.	C10, C12, B14	1
	936131	Snap Ring, 1" Dia.	C10, C12, B14	2
	937014	Key, #9 Woodruff	C10, C12, B14	2
4-33	5966	Park Brake Assy.	C10, C12, B14	1
4-34	5969	Brake Lever Assy.	C10, C12, B14	1
	933152	Roll Pin, $\frac{1}{8}$ x $\frac{3}{4}$	C10, C12, B14	1
4-35	5990	Filter Assy.	C10, C12, B14	1
4-36	5991	Filter Fitting	C10, C12, B14	1
4-37	5992	Strainer	C10, C12, B14	1
4-38	101847	Dipstick Assy.	C10, C12, B14	1
4-39	102273	Nipple, $\frac{1}{2}$ " x $3\frac{1}{2}$ "	C10, C12, B14	1

ITEM NO.	PART NO.	DESCRIPTION	MODEL APPLICATION	NO. REQ'D.
4.050 HYDROGEAR (PLATE 4.4)				
4-51	7880	Assy. — Hydrogear	C10, C12, B14	1
	908034-6	Bolt, $\frac{3}{8}$ -16 x 1 Nylok to Case	C10, C12, B14	3
4-52	5955	Gasket — Pump	C10, C12, B14	1
4-53	5993	Support — Cam Block	C10, C12, B14	1
	911037	Screw, $\frac{1}{4}$ -20 x $\frac{1}{2}$ Socket Head	C10, C12, B14	3
4-54	970026	O-Ring	C10, C12, B14	2
4-55	6826	Shim	C10, C12, B14	2
4-56	972116	O-Ring	C10, C12, B14	1
4-57	5994	Arm — Cam Follower	C10, C12, B14	1
	933269	Roll Pin, $\frac{1}{4}$ x $1\frac{1}{4}$	C10, C12, B14	1
4-58	5995	Eccentric — Cam Follower	C10, C12, B14	1
	909849-5	Set Screw, $\frac{1}{4}$ -20 x $\frac{1}{2}$ Nylok	C10, C12, B14	1
4-59	5996	Cam	C10, C12, B14	1
4-60	5998	Plate — Tension	C10, C12, B14	2
	910777-4	Screw, #8-32 x $\frac{1}{2}$ Pan Head	C10, C12, B14	2
	920078-4	Lockwasher #8	C10, C12, B14	2
	920229-4	Washer, 0.188" I.D. x 0.31" O.D.	C10, C12, B14	2
4-61	7266	Valve — By-Pass	C10, C12, B14	1
	933196	Roll Pin, $\frac{3}{16}$ x 2	C10, C12, B14	1
4-62	971113	O-Ring	C10, C12, B14	2
4-63	7268	Ring — Back-Up	C10, C12, B14	1
4-64	7267	Plug	C10, C12, B14	1
4-66	6444	Assy. — Dampening Valve & O-Ring	C10, C12, B14	2
	970118	O-Ring	C10, C12, B14	2
	971015	O-Ring	C10, C12, B14	2
4-67	7054	Assy. — Piston & Sleeve (Matched)	C10, C12, B14	2
	971018	O-Ring	C10, C12, B14	2
4-68	7264	Spring — Relief Valve	C10, C12, B14	2
4-69	7052	Spring — Relief Valve	C10, C12, B14	2
4-70	7051	Seat — Spring	C10, C12, B14	2
4-71	7050	Cone — Relief Valve	C10, C12, B14	2
4-72	7049	Sleeve	C10, C12, B14	2
	971017	O-Ring	C10, C12, B14	2
4-73	7752	Plug	C10, C12, B14	7
	973310	O-Ring	C10, C12, B14	7
4-74	7753	Spring — Check Valve	C10, C12, B14	2
4-75	7754	Valve — Check Valve	C10, C12, B14	2
4-76	7755	Spring — Charge Pump Valve	C10, C12, B14	1
4-77	7756	Cone — Relief Valve — Charger 12	C10, C12, B14	1
	6632	Cone — Relief Valve — Bronco 14	C10, C12, B14	2
4-78	6631	Spring — Imp. Valve — Bronco 14	C10, C12, B14	1
4-79	943462	Plug — Pipe, $\frac{1}{2}$ -14 Hex. Socket Head	C10, C12, B14	1
4-80	7877	Seal — Pump Shaft	C10, C12, B14	1
5.000 FRONT AXLE AND STEERING (PLATE 5.1)				
5-01	5638	Axle Assy. — Front	C10, C12, B14	1
	1030	Fitting — Grease	C10, C12, B14	2
	1481	Fitting — Grease	C10, C12, B14	1
5-02	6216	Pin and Plate Assy.	C10, C12, B14	1
	908015-4	Bolt, $\frac{3}{8}$ -18 x $\frac{1}{2}$	C10, C12, B14	1
	920082-4	Lockwasher, $\frac{3}{8}$	C10, C12, B14	1
5-03	5630	Spindle Assy. R.H.	C10, C12, B14	1
	5631	Spindle Assy. L.H.	C10, C12, B14	1
	5618	E-Ring	C10, C12, B14	3
5-11	102592	Ball Joint Assy. R.H.	C10, C12, B14	1
	102593	Ball Joint Assy. L.H.	C10, C12, B14	1
	915002-6	Nut, Eslok $\frac{3}{8}$ -24	C10, C12, B14	4
5-16	6472	Bearing and Housing	C10, C12, B14	1
	908034-4	Bolt, $\frac{3}{8}$ -16 x 1	C10, C12, B14	2
	915113-6	Nut, Eslok $\frac{3}{8}$ -16	C10, C12, B14	2
5-17	6469	Shaft Assy., Lower Steering	C10, C12, B14	1
	5210	Washer, Shim (.015)	C10, C12, B14	1
	1278	Washer, Shim (.050)	C10, C12, B14	1
	932035-4	Cotter Pin, $\frac{3}{16}$ x $1\frac{1}{4}$	C10, C12, B14	1

ITEM NO.	PART NO.	DESCRIPTION	MODEL APPLICATION	NO. REQ'D.
5-20	7896	Washer, Spring	C10, C12, B14	1
5-25	6396	Support Assy., Lower Steering	C10, C12, B14	1
	908035-4	Bolt, $\frac{3}{8}$ -16 x $1\frac{1}{4}$	C10, C12, B14	2
	915113-6	Nut, $\frac{3}{8}$ -16 Eslok	C10, C12, B14	2
	1030	Fitting — Grease	C10, C12, B14	1
5-26	6397	Bushing, Lower Shaft	C10, C12, B14	1
5-28	101442	Bushing, Steering Column	C10, C12, B14	1
5-32	7447	Shaft Assy., Upper Steering	C10, C12, B14	1
5-33	1085	Collar, Set	C10, C12, B14	1
	909848-5	Set Screw, $\frac{1}{4}$ -20 x $\frac{1}{4}$ Nylok	C10, C12, B14	1
5-35	7468	Collar, Steering	C10, C12, B14	1
5-39	7420	Wheel, Steering	C10, C12, B14	1
	933269	Pin Spirol $\frac{1}{4}$ x $1\frac{1}{4}$	C10, C12, B14	1
	937014	Key, Woodruff #9	C10, C12, B14	1
5-44	7469	Insert, Steering Wheel	C10, C12, B14	1
	7421	Decal, Steering Wheel Insert	C10, C12, B14	1
6.050 BRAKE CLUTCH SPEED CONTROL LINKAGE (PLATE 6.5)				
6-08	100634	Handle — Parking Brake	C10, C12, B14	1
6-09	8693	Knob — Plain Bolt Hole	C10, C12, B14	AR
	8722	Knob — #10-24 Thread	C10, C12, B14	AR
	910797-4	Screw, #10-24 x $\frac{1}{4}$ Pan Head	C10, C12, B14	AR
6-14	1230	Spring	C10, C12, B14	1
	908003-4	Bolt, $\frac{1}{4}$ -20 x $\frac{3}{4}$ Spring Anchor	C10, C12, B14	1
	915111-6	Nut, $\frac{1}{4}$ -20 Nylok	C10, C12, B14	1
6-20	6403	Pedal	C10, C12, B14	1
6-21	6254	Bushing — Pedal	C10, C12, B14	2
6-22	1085	Collar	C10, C12, B14	1
	909848-5	Set Screw, $\frac{1}{4}$ -20 x $\frac{1}{4}$ Nylok	C10, C12, B14	1
6-22A	7896	Washer, Spring	C10, C12, B14	1
5-22B	979207-4	Spacer (Split)	C10, C12, B14	1
5-22C	4064	Spacer	C10, C12, B14	1
6-23	6113	Assy. — Rod — Neutral	C10, C12, B14	1
	932017-4	Cotter Pin, $\frac{1}{8}$ x 1	C10, C12, B14	1
	933503-4	Hairpin Cotter	C10, C12, B14	2
6-26	6130	Assy. — Idler Arm	C10, C12, B14	1
	920011-4	Washer, $\frac{1}{2}$ SAE	C10, C12, B14	1
	908003-4	Bolt, $\frac{1}{4}$ -20 x $\frac{3}{4}$ Idler Arm Stop	C10, C12, B14	1
	915234-4	Nut, $\frac{1}{4}$ -20 Jam	C10, C12, B14	1
	920081-4	Lockwasher, $\frac{1}{4}$	C10, C12, B14	1
6-29	7434	Pulley — Idler	C10, C12, B14	1
	911404-4	Bolt, $\frac{3}{8}$ -16 x $1\frac{3}{8}$	C10, C12, B14	1
6-30	7435	Spacer	C10, C12, B14	1
6-32	9170	Spring	C10, C12, B14	1
6-42	7879	Bushing	C10, C12, B14	AR
6-43	7474	Assy. — Lever — Brake	C10, C12, B14	1
	920011-4	Washer, $\frac{1}{2}$ SAE	C10, C12, B14	1
	920009-4	Washer, $\frac{3}{8}$ SAE	C10, C12, B14	1
	932001-4	Cotter Pin, $\frac{1}{16}$ x $\frac{3}{4}$	C10, C12, B14	1
6-50	7598	Assy. — Cam Control Arm	C10, C12, B14	1
6-51	6129	Grip — Handle	C10, C12, B14	1
6-52	6128	Indicator — Speed	C10, C12, B14	1
	908001-4	Bolt, $\frac{1}{4}$ -20 x $\frac{1}{2}$	C10, C12, B14	1
	915111-6	Nut, $\frac{1}{4}$ -20 Nylok	C10, C12, B14	1
6-53	MW-2195	Bushing — Bronze	C10, C12, B14	1
6-54	6127	Pin — Cam Block	C10, C12, B14	1
	915113-6	Nut, $\frac{3}{8}$ -16 Nylok	C10, C12, B14	1
6-55	7604	Assy. — Rod — Cam Pivot	C10, C12, B14	1
	937007	Key, $\frac{1}{8}$ x $\frac{1}{2}$ Woodruff	C10, C12, B14	1
	926694-4	$\frac{3}{16}$ -18 x $\frac{3}{8}$ S.T.	C10, C12, B14	1
6-56	7599	Collar — Friction	C10, C12, B14	1
6-57	7601	Collar — Bracket Pivot	C10, C12, B14	1
6-58	7600	Cone — Friction	C10, C12, B14	1
6-59	7602	Spring — Friction	C10, C12, B14	1
	920011-4	Washer, $\frac{1}{2}$ SAE	C10, C12, B14	2
6-60	7603	Collar — Friction Adjusting	C10, C12, B14	1
	915241-4	Nut, $\frac{3}{4}$ -10 Jam	C10, C12, B14	1

ITEM NO.	PART NO.	DESCRIPTION	MODEL APPLICATION	NO. REQ'D.
6-61	6142	Plate — Cam — Neutral	C10, C12, B14	1
6-62	6143	Spacer — Cam Plate	C10, C12, B14	1
6-63	5983	Bushing — Nyliner	C10, C12, B14	1
6-64	3765	Washer, $\frac{1}{2}$ " Dia. Special	C10, C12, B14	1
	908035-4	Bolt, $\frac{3}{8}$ -16 x $1\frac{1}{4}$	C10, C12, B14	1
	915113-6	Nut, $\frac{3}{8}$ -16 Nylok	C10, C12, B14	1
	920009-4	Washer, $\frac{3}{8}$	C10, C12, B14	1
6-79	5701	E-Ring — $\frac{1}{2}$ " Shaft	C10, C12, B14	AR
7.000 HITCH ASSEMBLIES (PLATE 7.1)				
7.01	6710	Latch and Shaft Assy.	C10, C12, B14	1
	932120-4	Pin, Clevis	C10, C12, B14	1
	933503-4	Hairpin Cotter	C10, C12, B14	1
7.02	6712	Plate — R.H. Mounting	C10, C12, B14	1
	908035-4	Bolt, $\frac{3}{8}$ -16 x $1\frac{1}{4}$	C10, C12, B14	2
	915113-6	Nut, $\frac{3}{8}$ -16 Eslok	C10, C12, B14	2
7.03	4497	Plate — L.H. Mounting	C10, C12, B14	1
	908034-4	Bolt, $\frac{3}{8}$ -16 x 1	C10, C12, B14	2
	915113-6	Nut, $\frac{3}{8}$ -16 Eslok	C10, C12, B14	2
7.04	8174	Bracket and Pin Assy.	C10, C12, B14	1
7.05	6714	Bushing	C10, C12, B14	1
	MW-4564	E-Ring, $\frac{3}{8}$ Nominal	C10, C12, B14	1
7.06	6727	Cam Arm Assy.	C10, C12, B14	1
7.12	101711	Hitch — Front	C10, C12, B14	1
	7-20-C 1644	Hitch	C10, C12, B14	1
7.22	1647	Pin — Hitch Mounting	C10, C12, B14	1
	979120-4	Spacer	C10, C12, B14	2
	936125	Snap Ring, $\frac{3}{4}$ Shaft	C10, C12, B14	2
7.23	1813	Tool Pin	C10, C12, B14	1
7.030 LIFT LINKAGE (PLATE 7.2)				
7.30	5448	Lift Lever Assy.	C10, C12, B14	1
	933506-4	Hairpin Cotter, Mounting Block	C10, C12, B14	1
	908015-4	Bolt, $\frac{3}{16}$ -18 x $\frac{1}{2}$ Mounting	C10, C12, B14	3
	920082-4	Lockwasher, $\frac{5}{16}$	C10, C12, B14	3
7.31	3680	Cap — Rod End	C10, C12, B14	2
7.32	6542	Grip — Handle	C10, C12, B14	1
7.33	3624	Spring	C10, C12, B14	1
7.35	3578	Guide — Plunger Rod	C10, C12, B14	1
7.36	5449	Plunger Rod	C10, C12, B14	1
7.37	4438	Plunger	C10, C12, B14	1
	933168	Roll Pin, $\frac{5}{32}$ x $1\frac{1}{16}$	C10, C12, B14	1
7.40	5640	Quadrant	C10, C12, B14	1
7.41	2179	Rod — Height Control	C10, C12, B14	1
7.42	5280	Knob — Height Control	C10, C12, B14	1
	926715-4	Bolt, $\frac{3}{8}$ -16 x $\frac{3}{4}$ S.T.	C10, C12, B14	2
7.43	8277	Conduit Assy.	C10, C12, B14	1
7.060 HYDRAULIC LIFT LINKAGE (PLATE 7.6) BRONCO 14				
7.60	6615	Assy. — Lift Arm	B14	1
	933506-4	Hairpin Cotter	B14	1
7.61	6629	Arm — Height Indicator	B14	1
	908017-4	Bolt, $\frac{3}{16}$ -18 x $\frac{3}{4}$	B14	1
	920008-4	Washer, $\frac{5}{16}$ SAE	B14	1
	920082-4	Lockwasher, $\frac{5}{16}$	B14	1
7.62	6628	Plate — Indicator	B14	1
8.000 SHEET METAL AND COVERS (PLATE 8.1)				
8.01	9699	Hood Assy.	C10, C12, B14	1
8.05	101732	Bracket — Grille Pivot — R.H.	C10, C12, B14	1
	101733	Bracket — Grille Pivot — L.H.	C10, C12, B14	1
	900037-4	Bolt, $\frac{3}{16}$ -18 x $\frac{3}{4}$ Carriage	C10, C12, B14	4
	915112-6	Nut, $\frac{3}{16}$ -18 Eslok	C10, C12, B14	4
8.06	101710	Rod — Pivot	C10, C12, B14	1
	100398	Ring, Retainer	C10, C12, B14	2

ITEM NO.	PART NO.	DESCRIPTION	MODEL APPLICATION	NO. REQ'D.	ITEM NO.	PART NO.	DESCRIPTION	MODEL APPLICATION	NO. REQ'D.
8-06A	101850	Rod — Hood Stop	C10, C12, B14	1	8-94	102248	Bracket — Fender (Front)	C10, C12, B14	1
	932000-4	Cotter Pin, $\frac{1}{16} \times \frac{1}{2}$	C10, C12, B14	2		900037-4	Bolt, $\frac{5}{16}$ -18 x $\frac{3}{8}$ Carriage	C10, C12, B14	2
8-07	5667	Bumper — Rubber	C10, C12, B14	2		915112-6	Nut, $\frac{5}{16}$ -18 Eslök	C10, C12, B14	2
8-09	5467	Lever — Hood Latch	C10, C12, B14	1		5667	Bumper, Rubber	C10, C12, B14	2
	933182	Roll Pin, $\frac{3}{16} \times \frac{5}{8}$	C10, C12, B14	1	8-95	102249	Bracket — Fender Hinge	C10, C12, B14	1
8-10	5469	Knob — Hood Latch	C10, C12, B14	1	8-100	7436	Belt Guard Assy.	C10, C12, B14	1
8-11	5468	Roller — Steel	C10, C12, B14	2		908045-4	Bolt, $\frac{7}{16}$ -14 x $\frac{3}{4}$ Eng. Mount	C10, C12, B14	1
8-12	5522	Rod — Hood Latch	C10, C12, B14	1		908032-4	Bolt, $\frac{3}{8}$ -16 x $\frac{3}{4}$	C10, C12, B14	1
	5466	Speed Nut, $\frac{1}{4}$ Push On $\frac{1}{2}$ Dia.	C10, C12, B14	2		920084-4	Lockwasher $\frac{7}{16}$	C10, C12, B14	1
						920040-4	Washer $\frac{7}{16}$	C10, C12, B14	1
8-15	5438	Ornament — Hood	C10, C12, B14	1	9.000 ENGINE (PLATE 9.1)				
	5437	Speed Nut, $\frac{1}{8}$ Dia. Push On	C10, C12, B14	2	9-02	101954	Engine 10 H.P. Kohler	C10	1
	100646	Washer, Rubber	C10, C12, B14	2		101955	Engine 12 H.P. Kohler	C12	1
8-16	9799	Plate — Escutcheon	C10	1		*9651	Engine 12 H.P. Kohler	C12	1
	7721	Clip	C10	4		101956	Engine 14 H.P. Kohler	B14	1
	100646	Washer Rubber	C10	4		908034-4	Bolt, $\frac{3}{8}$ -16 x 1 Eng. Mount	C10, C12, B14	2
8-30	101899	Hoodstand Assy.	C10, C12, B14	1		908036-4	Bolt, $\frac{3}{8}$ -16 x $\frac{1}{2}$	C10, C12, B14	2
	908034-4	Bolt, $\frac{3}{8}$ -16 x 1 To Frame	C10, C12, B14	4		915663-4	Nut, $\frac{3}{8}$ -16 E.S.	C10, C12, B14	2
	915113-6	Nut, $\frac{3}{8}$ -16 Eslök	C10, C12, B14	4		920083-4	Lockwasher $\frac{3}{8}$	C10, C12, B14	2
8-32	6825	Cover — Dust	C10, C12, B14	1	*Charger 12 Model 1-0402 w/Solid State Ign. Only.				
	908017-4	Bolt, $\frac{5}{16}$ -18 x $\frac{3}{4}$	C10, C12, B14	4	9-06	943335-4	Nipple, Special — Drain	C10, C12, B14	1
	915112-6	Nut, $\frac{5}{16}$ -18 Eslök	C10, C12, B14	4		5222	Elbow, $\frac{3}{8} \times 90^\circ$	C10, C12, B14	1
8-35	101092	Plate — Cover — Instructions	C10, C12, B14	1		5224	Cap $\frac{3}{8}$ Pipe	C10, C12, B14	1
8-36	101397	Plate — Back Up	C10, C12, B14	1	10.000 FUEL AND EXHAUST SYSTEMS (PLATE 10.1)				
	101410	Screw, Special	C10, C12, B14	4	10-02	101837	Choke Control Assy.	C10, C12, B14	1
8-37	5450	Housing — Control Panel	C10, C12, B14	1	10-03	101834	Throttle Control Assy.	C10, C12, B14	1
	960152-4	Bolt, $\frac{1}{4}$ -20 x $\frac{5}{8}$ Whizlock	C10, C12, B14	4		8713	Screw, Pan Head 10-24 x $\frac{3}{8}$	C10, C12, B14	4
	915111-6	Nut, $\frac{1}{4}$ -20 Eslök	C10, C12, B14	4		915964-4	Nut — Keps 10-24	C10, C12, B14	4
8-40	101882	Panel — Dash	C10, C12, B14	1	10-04	102186	Knob, Choke	C10, C12, B14	1
8-41	101841	Plate — Backup	C10, C12, B14	1	10-04A	102185	Knob, Throttle	C10, C12, B14	1
	5442	Speednut #10-16 Tinnerman	C10, C12, B14	4	10-13	100452	Strap, Engine (PTO Side)	C10, C12, B14	1
	102168	Screw S.T. 10-16 x $\frac{3}{4}$ "	C10, C12, B14	4	10-14	100729	Clip, To Fuel Tank Support	C10, C12, B14	2
8-44	5606	Tape — Hood Insulation	C10, C12, B14	AR		2879	Clip, Choke and Throttle	C10, C12, B14	2
8-45	100498	Support — Fuel Tank	C10, C12, B14	1		960150-4	Screw — $\frac{1}{4}$ -20 x $\frac{3}{8}$ Whizlock	C10, C12, B14	1
	926694-4	Screw $\frac{5}{16}$ -18 x $\frac{3}{8}$ S.T.	C10, C12, B14	4		5431	Nut — Special $\frac{1}{4}$ -20	C10, C12, B14	1
	3023	Clip	C10, C12, B14	AR		908001-4	Bolt, $\frac{1}{4}$ -20 x $\frac{1}{2}$	C10, C12, B14	1
8-47	101344	Bracket Instrument	C10, C12, B14	1		915111-6	Nut, $\frac{1}{4}$ -20 Eslök	C10, C12, B14	1
	MW-4475	Clip Tinnerman $\frac{1}{4}$ -20	C10, C12, B14	2	10-20	100572	Tank, Fuel	C10, C12, B14	1
	960151-4	Bolt, Whizlock $\frac{1}{4}$ -20 x $\frac{1}{2}$	C10, C12, B14	2	10-21	102321	Cap, Fuel Tank	C10, C12, B14	1
8-71	102370	Fender	C10, C12, B14	1	10-22	100427	Wire, Tank Hold Down	C10, C12, B14	1
8-80	7879	Bushing — Bronze	C10, C12, B14	2	10-25	6949	Spring	C10, C12, B14	1
8-81	4937	Spacer	C10, C12, B14	2	10-30	8023	Valve, Fuel	C10, C12, B14	1
	908033-4	Bolt, $\frac{3}{8}$ -16 x $\frac{7}{8}$	C10, C12, B14	2		5189	Spacer	C10, C12, B14	1
	915113-6	Nut, $\frac{3}{8}$ -16 Eslök	C10, C12, B14	2	10-31	100327	Filter Assy. — Fuel	C10, C12, B14	1
	920009-4	Washer, $\frac{3}{8}$ — SAE	C10, C12, B14	2	10-32	*9212	Hose—Fuel—Valve to Tank 6.5"	C10, C12, B14	1
8-83	6110	Tool Box	C10, C12, B14	1		*100088	Hose—Fuel—Tank to Filter 9.5"	C10, C12, B14	1
	908032-4	Bolt, $\frac{3}{8}$ -16 x $\frac{3}{4}$	C10, C12, B14	4		*100061	Hose—Fuel—Filter to Pump 24"	C10, C12, B14	1
	920083-4	Lockwasher, $\frac{3}{8}$	C10, C12, B14	4		*8025	Hose—Fuel—Pump to Carb. 5.5"	C10, C12, B14	1
8-84	7464	Latch — Fender	C10, C12, B14	1	*Cut from 6554				
8-85	MW-8863	Spring — Latch	C10, C12, B14	1	10-33	101349	Clamp, Hose, Adjustable	C10, C12, B14	1
	5977	Bushing	C10, C12, B14	1	10-34	950154	Clamp, Corbin $\frac{1}{2}$ "	C10, C12, B14	5
	7617	Pin, $\frac{5}{16}$ Rod End	C10, C12, B14	1	10-35	101861	Clamp, Hose	C10, C12, B14	AR
	932008-4	Cotter Pin, $\frac{3}{32} \times \frac{3}{4}$	C10, C12, B14	1		908017-4	Bolt, $\frac{5}{16}$ -18 x $\frac{3}{4}$	C10, C12, B14	1
8-86	7616	Bracket — Fender Latch	C10, C12, B14	1		920008-4	Washer, $\frac{5}{16}$ SAE	C10, C12, B14	1
	908005-4	Screw, $\frac{1}{4}$ -20 x 1	C10, C12, B14	2		915112-6	Nut, $\frac{5}{16}$ -18 Eslök	C10, C12, B14	1
	915111-6	Nut, $\frac{1}{4}$ -20 Eslök	C10, C12, B14	2	10-40	102258	Muffler Assy.	C10, C12, B14	1
8-90	7463	Bracket — Foot Rest	C10, C12, B14	1	10-44	102645	Clamp — Muffler	C10, C12, B14	2
	926694-4	Screw $\frac{3}{16}$ -18 x $\frac{3}{8}$ S.T.	C10, C12, B14	2	10-49	102228	Tube Assy. Inlet	C10, C12, B14	1
8-91	7454	Footrest — R.H.	C10, C12, B14	1	11.000 ELECTRICAL SYSTEM (PLATE 11.1)				
	7455	Footrest — L.H.	C10, C12, B14	1	11-01	101843	Harness — Wiring (Main)	C10, C12, B14	1
	908017-4	Bolt, $\frac{5}{16}$ -18 x $\frac{3}{4}$ To Bracket	C10, C12, B14	4		*102584	Harness (Solid State Ign.)	C12	1
	915662-4	Nut, $\frac{5}{16}$ -18 E.S.	C10, C12, B14	4		100571	Tie — Wire Retainer	C10, C12, B14	1
	960175-4	Bolt, $\frac{3}{16}$ -18 x $\frac{1}{2}$ To Belt Guard	C10, C12, B14	3		101446	Insulator (Plastic Shield)	C10, C12, B14	1
8-92	7456	Bracket — Footrest Anchor	C10, C12, B14	2	11-02	101971	Grommet Rubber (111. Plate 8.1)	C10, C12, B14	1
	900037-4	Bolt, $\frac{3}{16}$ -18 x $\frac{3}{4}$ Carriage	C10, C12, B14	2		100446	Wire, Battery to Ground	C10, C12, B14	1
	915662-4	Nut, $\frac{3}{16}$ -18 E.S.	C10, C12, B14	2					
8-93	8007	Bracket — Foot Rest	B14	1					
	900037-4	Bolt, $\frac{5}{16}$ -18 x $\frac{3}{4}$ Carriage	B14	1					
	915662-4	Nut, $\frac{5}{16}$ -18	B14	1					

ITEM NO.	PART NO.	DESCRIPTION	MODEL APPLICATION	NO. REQ'D.	ITEM NO.	PART NO.	DESCRIPTION	MODEL APPLICATION	NO. REQ'D.
<u>14.040 P. T. O. CLUTCH (PLATE 14.2)</u>									
14-40	101473	Assy. — Electric Clutch	C12, B14	1	14-66	920084-4	Lockwasher $\frac{7}{16}$	C10	1
	908200-4	Bolt, $\frac{7}{16}$ -20 x $2\frac{1}{4}$	C12, B14	1	14-67	909880-5	Set Screw, $\frac{3}{8}$ -16 x $\frac{3}{4}$	C10	1
	920234-4	Washer, Clutch	C12, B14	1	14-68	915113-6	Nut, $\frac{3}{8}$ -16 Eslok	C10	2
	920125-5	Lockwasher, $\frac{7}{16}$ Ext. Tooth	C12, B14	1	14-69	5194	Decal — Clutch Adjustment	C10	1
14-42	101490	Assy. — Housing and Pulley	C12, B14	1	<u>15.000 SEATS, DECALS, MISC. TRIM (PLATE 15.1)</u>				
14-43	101491	Assy. — Field and Bearing	C12, B14	1	15-01	100780	Cushion — Seat One Piece	C10	1
	931121-4	Pin, Rod End — To Bracket	C12, B14	1		6189	Tape — Foam	C10	2
	933504-4	Hairpin Cotter	C12, B14	1		908015-4	Bolt, $\frac{5}{16}$ -18 x $\frac{1}{2}$	C10	2
14-44	101787	Assy. — Bracket — Clutch	C12, B14	1		908016-4	Bolt, $\frac{5}{16}$ -18 x $\frac{3}{8}$	C10	2
	908046-4	Bolt, $\frac{7}{16}$ -14 x 1	C12, B14	1		920082-4	Lockwasher — $\frac{3}{16}$	C10	4
	920010-4	Washer, $\frac{7}{16}$ SAE	C12, B14	1		915932-4	Nut, High Crown 10-24	C10	2
	920084-4	Lockwasher, $\frac{7}{16}$	C12, B14	1	15-02	9661	Seat Base Assy.	C12, B14	1
	8519	Clip, Wire	C12, B14	1	15-03	9662	Spacer	C12, B14	2
<u>14.050 MANUAL P.T.O. (PLATE 14.3)</u>						900038-4	Bolt, $\frac{5}{16}$ -18 x 1 Carriage	C12, B14	4
14-50	4355	Rod, Clutch Control	C10	1		915112-6	Nut, $\frac{5}{16}$ -18 Eslok	C12, B14	4
14-51	2709	Knob, Clutch Rod	C10	1		6189	Tape Foam	C12, B14	1
14-52	4383	Bracket	C10	1	15-04	9663	Cushion — Seat	C12, B14	1
	926694-4	Screw, $\frac{5}{16}$ -18 x $\frac{5}{8}$ S.T.	C10	2		960151-4	Bolt, $\frac{1}{4}$ -20 x $\frac{1}{2}$ Whizlock	C12, B14	3
14-53	6655	Clutch Plate & Facing Assy.	C10	1	15-05	9664	Cushion — Back	C12, B14	1
	6656	Plate — Clutch	C10	1	15-06	9665	Knob — Back Adjusting	C12, B14	1
	4365	Facing	C10	1		920082-4	Lockwasher	C12, B14	4
	6657	Rivet	C10	6		915932-4	Nut, High Crown 10-24	C12, B14	2
14-54	6658	Race, Bearing	C10	1		908016-4	Bolt, $\frac{5}{16}$ -18 x $\frac{3}{8}$	C12, B14	2
14-55	6659	Retainer, Bearing Race	C10	2	15-20	101036	Decal — Hood Trim (Wheel Horse)	C10, C12, B14	2
	960151-4	Bolt, $\frac{1}{4}$ -20 x $\frac{1}{2}$ Whizlock	C10	4	15-23	102022	Decal — Charge 10	C10	2
14-56	6663	Seal	C10	1		9993	Decal — Charger 12	C12	2
14-57	6662	Bearing	C10	1		100957	Decal — Bronco 14	B14	2
14-58	9209	Housing — Clutch & Pulley	C10	1	15-24	100958	Decal — Racing Stripe	C10, C12, B14	1
14-59	5196	Bearing, Ball	C10	1	15-25	8138	Decal — Fender	C10	1
14-60	936032	Snap Ring $1\frac{3}{4}$ Bore	C10	1	15-26	100614	Reflector — Fender	C10, C12, B14	1
14-61	933506-4	Hairpin Cotter	C10	1	15-36	6630	Decal — Height	B14	1
14-62	936125	Snap Ring $\frac{3}{4}$ Shaft	C10	1	15-37	7634	Decal — Free Wheeling	C10, C12, B14	1
14-63	5197	Shaft, Clutch	C10	1	15-38	7633	Decal — Maintenance	C10, C12, B14	1
14-64	7661	Rod & Plate Assy.	C10	1					
14-65	908046-4	Bolt, $\frac{7}{16}$ -14 x 1	C10	1					

Plate 7.6 HYDRAULIC LIFT LINKAGE

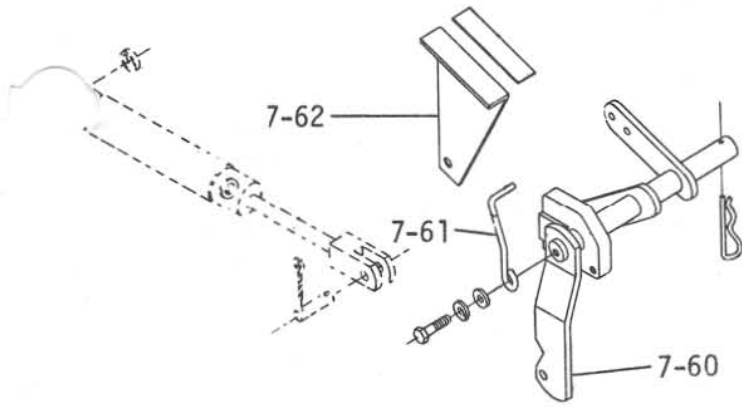


Plate 9.1 ENGINE

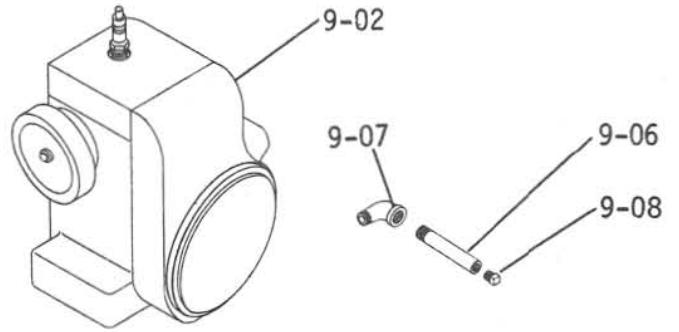


Plate 8.2

SHEET METAL AND COVERS

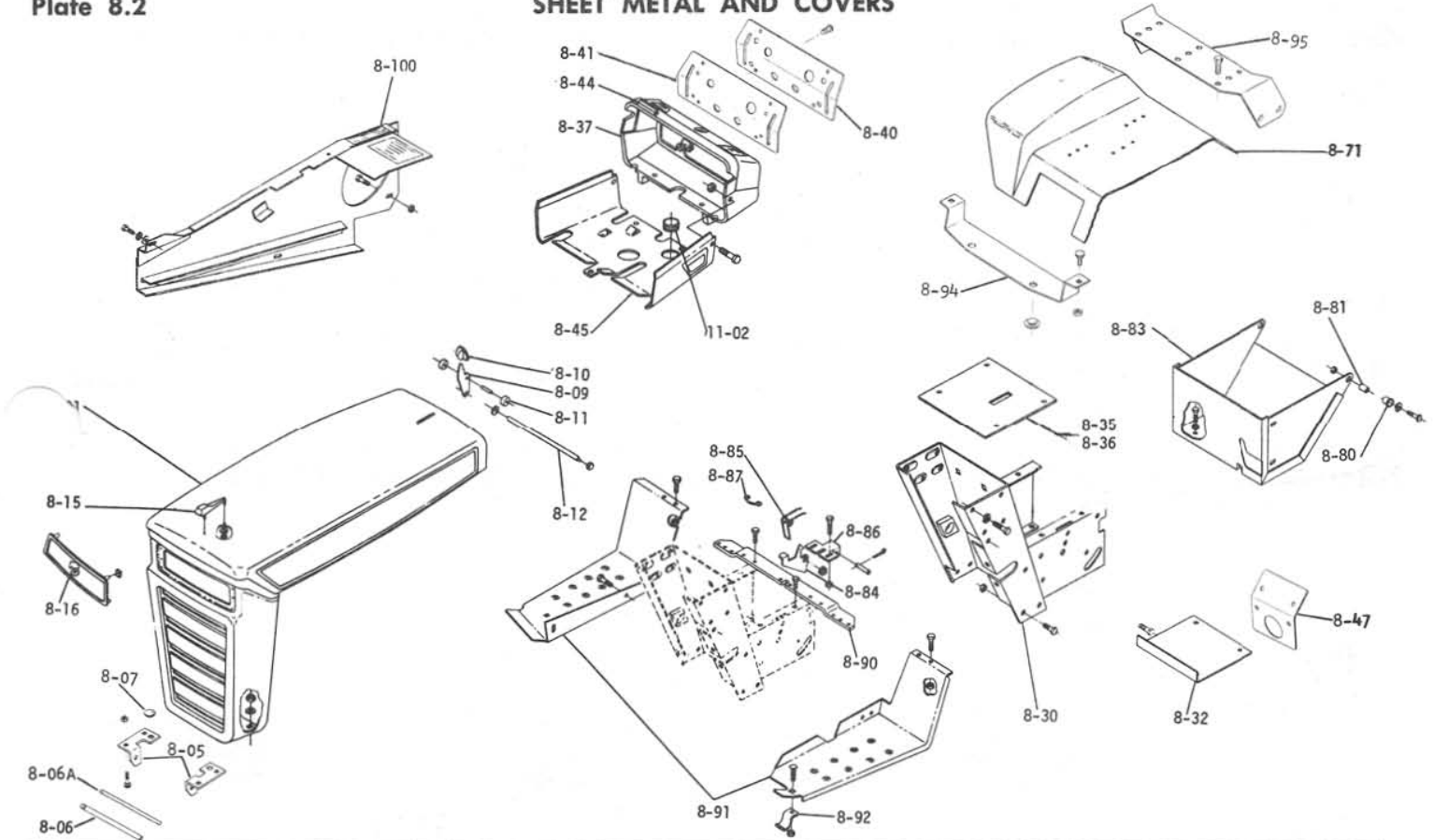


Plate 10.1

FUEL AND EXHAUST SYSTEM

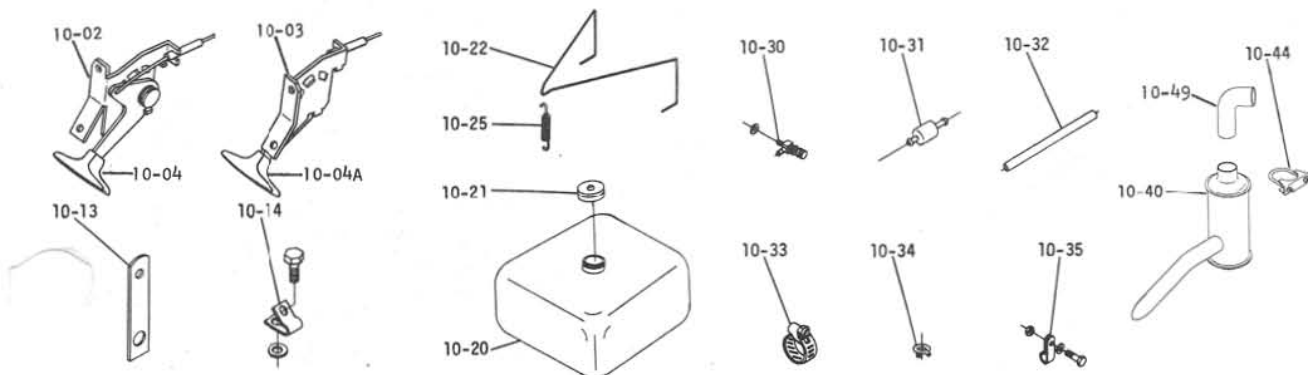


Plate 11.1

ELECTRICAL SYSTEM

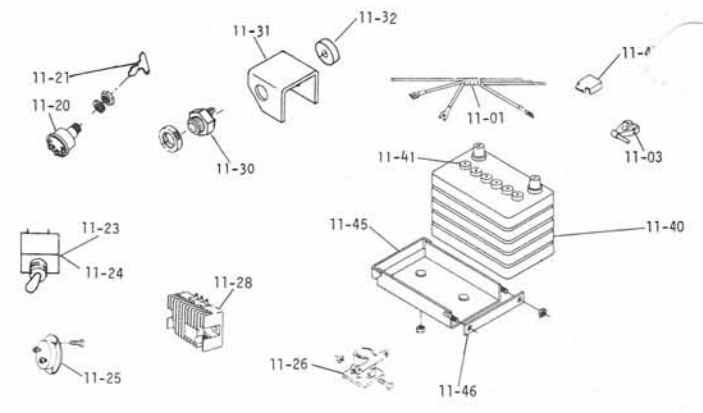
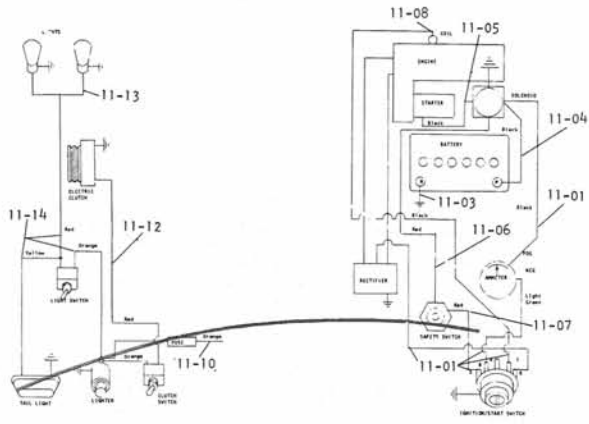


Plate 11.2 LIGHTS & CIGAR LIGHTER

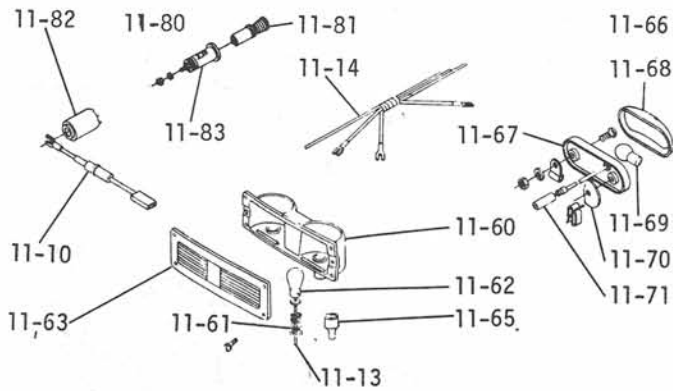


Plate 12.1 HYDRAULIC SYSTEM

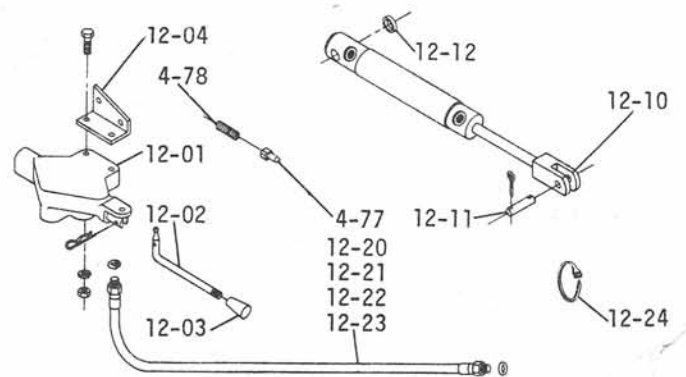


Plate 13.1 WHEELS AND TIRES

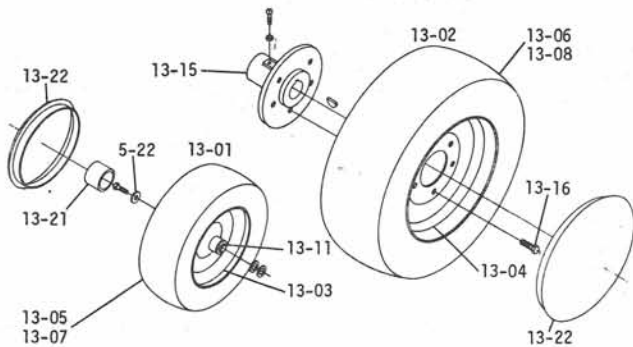


Plate 14.1 DRIVE BELTS, PULLEYS

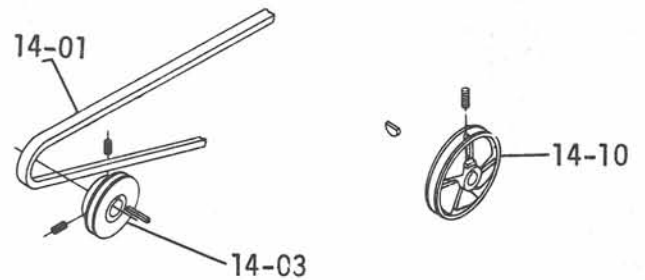


Plate 14.2 P. T. O. CLUTCH

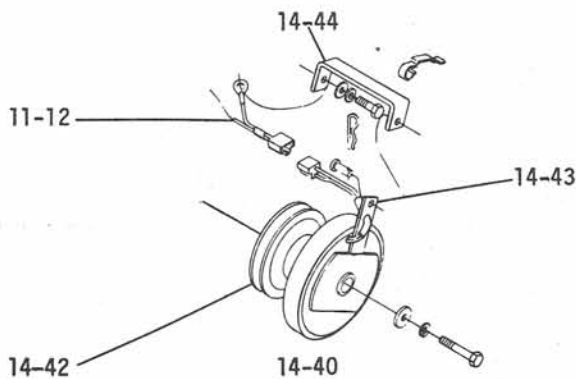


Plate 14.3 P. T. O. CLUTCH

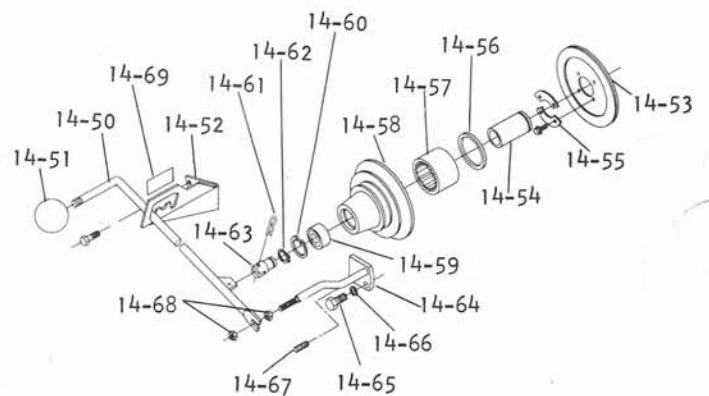


Plate 15.1 SEATS, DECALS, MISC. TRIM

