

# *Wheel Horse*®

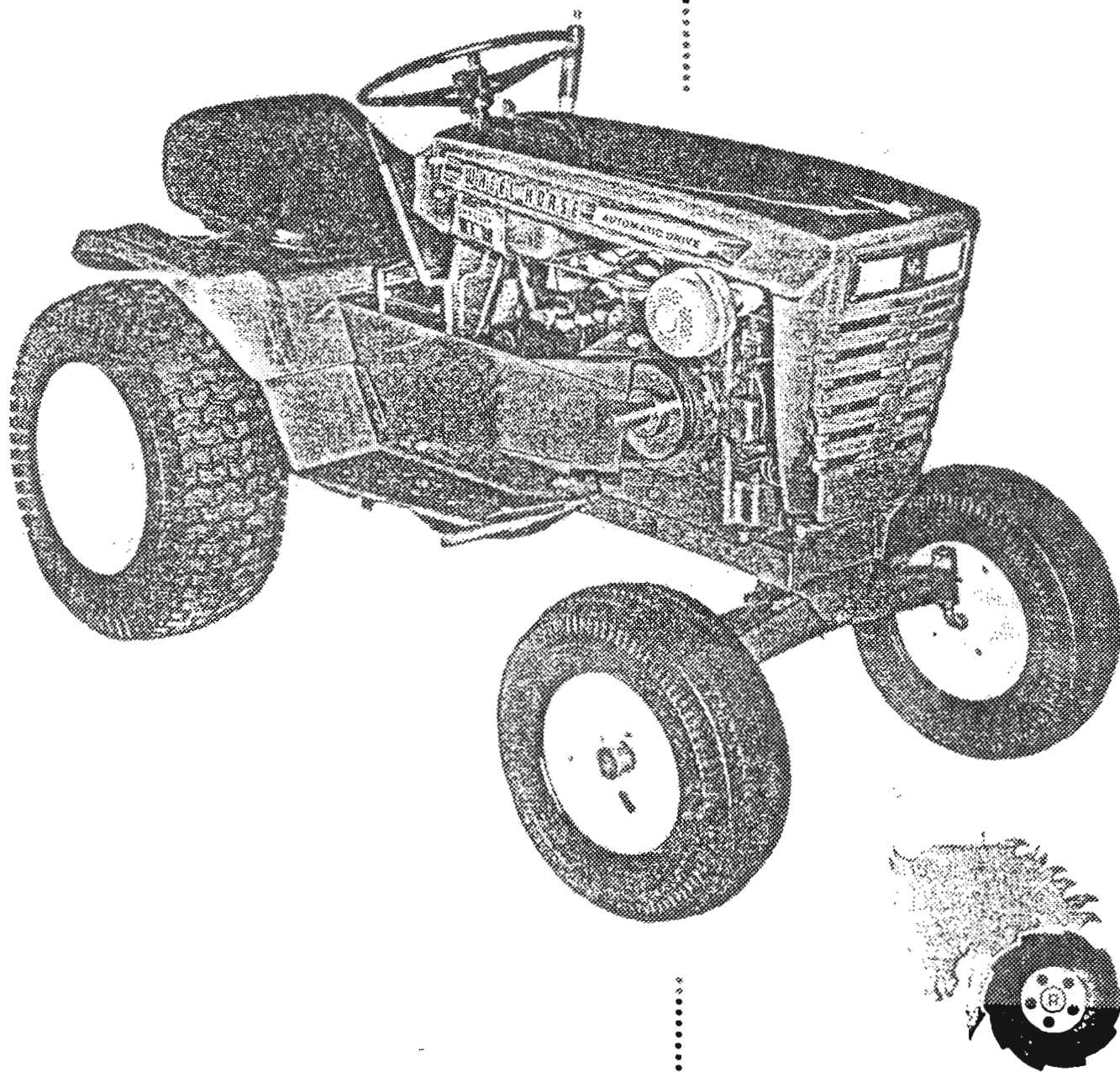
LAWN AND GARDEN TRACTORS

**OWNERS MANUAL**

**CHARGER 12**

**MODEL**

**1-7241**



**WHEEL-HORSE PRODUCTS, INC.**

**SOUTH BEND, IND.**

*"Quality is Standard Equipment in Every Wheelhorse Product"*

## ASSEMBLY

A. The tractor is shipped in one carton with the rear wheel and tire assemblies, Part No. 5432, in a separate carton.

B. Mount rear wheels to hubs using the ten lug bolts, Part No. 1004.

C. Mount front wheels to spindles using the  $\frac{3}{8}$ -16 x  $\frac{7}{8}$  Nylok bolts, Part No. 908033-6 and washers, Part No. 2844. There are two shim washers, one .015 thick and one .050 thick, in the loose part package for each wheel. Use one or both as shown on the exploded view drawing to provide a close fit. Press on hub caps.

D. To mount the steering wheel slip the collar, Part No. 7468, on the steering shaft, insert the Woodruff Key, Part No. 937014, mount the steering wheel, and secure with the  $\frac{1}{4}$  x  $1\frac{1}{4}$  roll pin, Part No. 933215.

## BATTERY

The battery installed in the tractor is a dry charged battery. It is important that you properly prepare this battery to insure good service and long life.

1. Remove vent caps. Remove or destroy any sealing device which may have been used to close or restrict the vent openings.

2. Fill each cell of the battery to the proper level with the battery electrolyte.

**NOTE:** Temperature of battery and electrolyte at time of filling should be above 60°F. Never fill battery in the vehicle.

3. **BOOST CHARGE:** 15 amps. for 10 minutes or 7 amps. for 30 minutes. Adjust electrolyte level, if necessary, after charge.

4. Install battery with battery posts toward the rear of tractor. Start engine. After battery has been in service, add only approved water.

**DO NOT ADD ACID.**

## TIRES

The front tires are 16 x 5.50-8 and should be inflated to 12 pounds of air pressure. The rear tires are 23 x 8.50-12 and should have 6 to 8 pounds of air pressure. The tires can also be filled with ballast if desired. Ordinarily this is not necessary as the weight of the operator will add sufficient weight for adequate traction.

## BEFORE YOU START

There is **NO OIL** in the crankcase of the engine when shipped from the factory. **OIL . . .** See Engine Manual.

**Wheel-a-Matic Transmission:** The transmission has been filled with Automatic Transmission fluid at the factory. (This is type "A" automatic transmission fluid, which is used in automobiles and may be purchased at any service station.)

A. The transmission fill pipe is located under the seat. See Fig. 11. Remove the fill cap and check level of transmission fluid to make sure transmission is filled to proper level.

B. To enable moving the tractor by hand you must open the towing valve. (See Towing Instructions.)

Lubricate all grease fittings with a regular pressure gun lubricant every eight to ten hours of operation. Refer to Figure V for the location of grease fittings.

A light machine oil should be used where indicated.

## OPERATING INSTRUCTIONS

The speed, direction and braking are controlled by the control handle located on the right side.

- To go Forward push the control handle Forward.
- To go Backward pull the control handle Back.
- To Stop put control handle in Neutral position.
- You may also Stop the tractor at anytime by depressing the foot pedal on the left side.

The tractor speed is affected instantly by the movement of the control handle. For safest operation the control handle should not be moved too rapidly, especially on grades.

## TOWING INSTRUCTIONS

This tractor should never be towed or pushed without first opening the towing valve.

A. The towing valve is located on the top surface of the pump. To push or tow follow directions on towing decal. (See Fig. 11.)

B. **CAUTION:** Do not tow for long distance or over a speed of seven (7) miles per hour.

## STARTING ENGINE

1. Before starting the engine fill gas tank (located under the hood) with a good grade of regular gas, and open fuel valve located on the left side of the hoodstand below the gas tank.

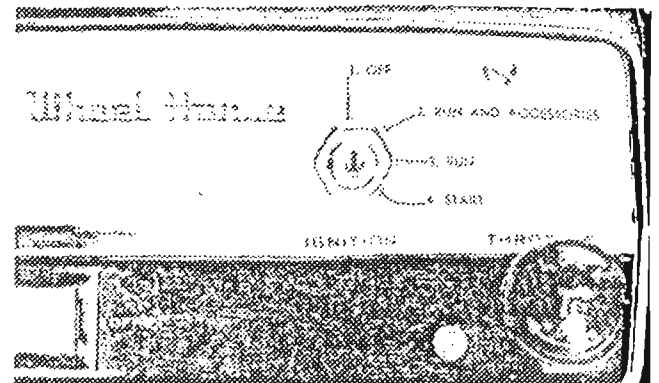


FIGURE 1

2. The tractor has a four position key starter-switch. See Fig. 1. Turn key all the way to right, position four, to start engine. After the engine starts the key will automatically return to position three, the run position. The key must be manually moved from run position to the run and accessories position, position two, before the lights, cigar lighter, or electric accessory will function. Any switch, lights, etc. inadvertently left on will automatically be turned off when the key is turned to the off position.

3. Pull throttle lever  $\frac{1}{2}$  way out and turn to the right to lock it in position. **Note:** The throttle control has a locking device. Turn the throttle control to the left to unlock, adjust to the desired position and turn to the right to lock.

4. Pull choke lever all the way out to choke engine. If engine is warm and has been running, choking may not be necessary.

5. When engine starts push choke in to off position and regulate throttle control by turning to the left to unlock and push in or out to desired speed.

6. When starting tractor in cold weather set the park brake. This releases the drive belt, and the engine does not have to turn the transmission.

#### PARKING BRAKE

The parking brake is located on the right side of the tractor. (See Figure V.) To set the parking brake pull on the handle. Brake should always be set when dismounting from tractor, especially on a grade, otherwise the tractor may creep. When brake is set the drive belt is automatically released. **Caution. Do not set parking brake while tractor is in motion as this may result in damage to the transmission.** Always depress foot pedal (on left side) before releasing parking brake.

#### TRANSMISSION CARE

Change oil filter after first ten hours. Change oil and filter every year or 100 hours of operation, whichever occurs first. The transmission oil capacity is approximately four (4) quarts.

- Use only type "A" automatic transmission oil.
- Check oil periodically and maintain at proper level as indicated on dipstick.

#### CARE OF TRACTOR

1. Keep tractor greased and oiled regularly. Refer to Figure V for the location of grease fittings. Check transmission and engine case oil levels.
2. Keep engine air cleaner clean. This will add to engine life.
3. Keep tires properly inflated. See previous instructions.
4. Keep tractor covered and in a dry place when not in use.
5. Keep grass and dirt out of engine cowling as these will stop the flow of air and decrease engine life.

6. Keep grass and dirt off transmission for good transmission cooling.

7. Battery — Check electrolyte level periodically.

**NOTE:** If tractor has been in storage it may be necessary to recharge battery.

#### 8. Control Handle Friction Adjustment:

The control lever is friction loaded so it will hold at any desired speed. The tension has been adjusted at the factory and should need little or no attention. If the handle does not stay where it is set during operation, the friction may be increased by releasing the locknut and tightening the collar-friction adjustment. (See Figure IV.) The proper amount of friction is obtained when approximately five pounds of force at the handle grip moves the control lever. Be sure to tighten the locknut after proper tension has been reached. The friction collar is self lubricating and does not require lubrication.

#### 9. Neutral Adjustment:

A. If tractor should creep while in neutral position this can be corrected. To check for creep place tractor on level surface with engine running, and depress foot pedal. Creep on slopes is normal and cannot be entirely eliminated.

B. To make neutral adjustment (See Figure III).

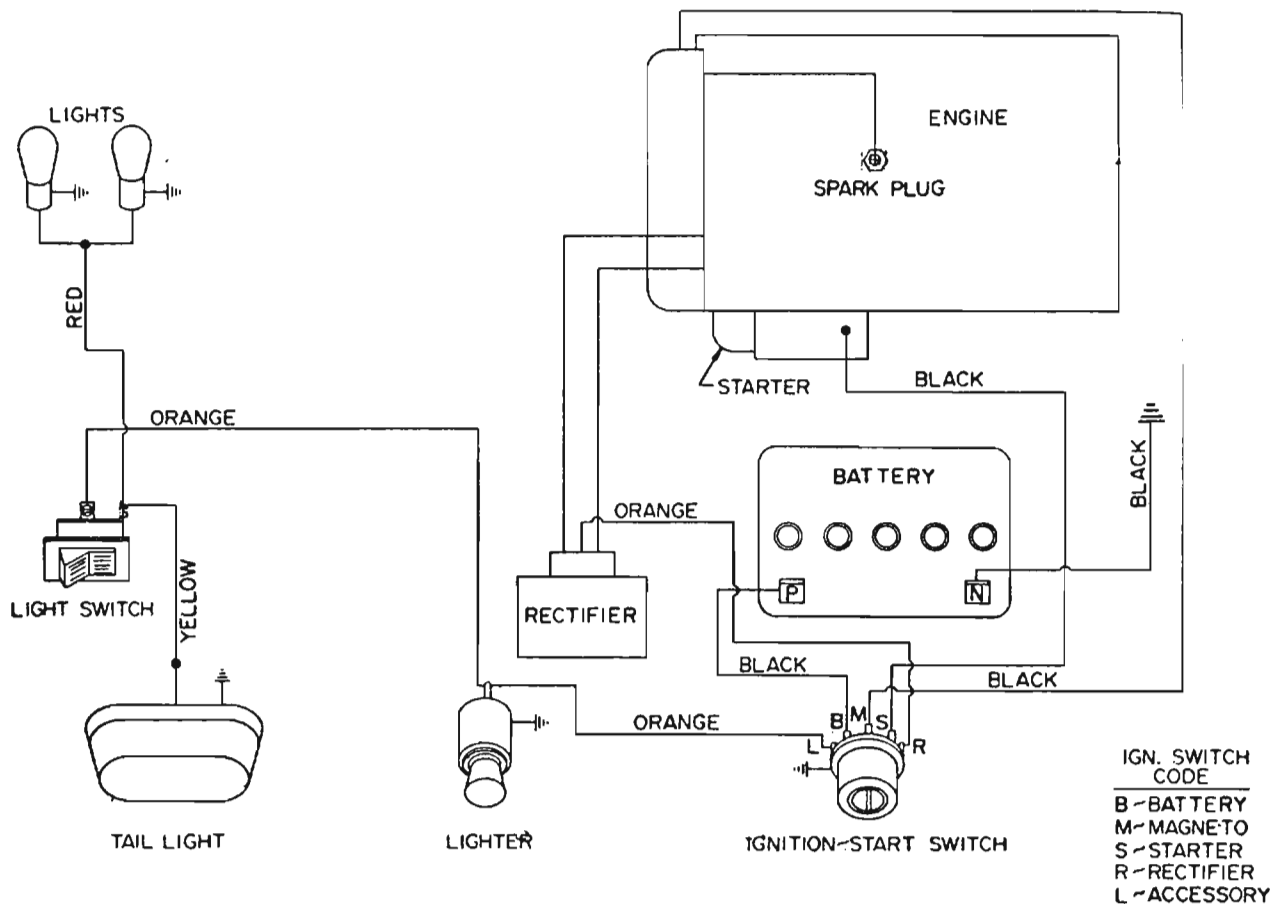
1. Block rear wheels off ground.
2. Remove instruction plate, (located in front of the seat) by removing the four screws which hold it.
3. Loosen set screw in arm with allen wrench (See Figure III).
4. Depress foot pedal on left side.
5. With tractor engine running and park brake disengaged, insert short screwdriver through hole in nylon cam and rotate the eccentric cam pin until rear wheels stop. Now retighten set screw in arm and replace plate.
6. **NOTE:** The lobe on the eccentric pin must be upward for proper operation.

10. When replacing belts be sure to purchase genuine Wheel Horse Belts, as these belts are specifically designed for each application. **NOTE:** Make sure all pulleys are in line.

11. Your tractor is only as good as the service you give it. See your Wheel Horse Dealer for a thorough check-up after each season of use.

#### ATTACHING TOOLS

Complete information on the assembly, attachment, operation and service of the many attaching tools will be provided with each attachment.



**WIRING DIAGRAM**

**SAFETY SUGGESTIONS**

*Recommended by Outdoor Power Equipment Institute*

1. Know the controls and how to stop quickly — read the owners manual.
2. Do not allow children to operate machine; nor adults to operate it without proper instruction.
3. Clear work area of objects which might be picked up and thrown.
4. Disengage all clutches and shift into neutral before starting motor. Keep hands, feet, and clothing away from power driven parts.
5. Do not carry passengers. Keep children and pets a safe distance away.
6. Never direct discharge of any material toward bystanders, nor allow anyone near machine while in operation.
7. Disengage power to attachment (s) and stop motor before leaving operator position.
8. Take precautions when leaving machine unattended (to avoid accidental starting, rolling away, accidental dropping of any attachment, etc.)
9. Disengage power to any attachment whenever it is not in use, or when traveling from one work area to another.
10. Stay alert for holes and other hidden hazards. Know what is behind you, before backing up.
11. Beware of steep slopes; reduce speed on all side slopes and sharp turns, to prevent tipping or losing control.
12. Don't stop or start suddenly when going uphill or downhill.
13. Use care when pulling loads or using heavy equipment.
14. Watch out for traffic when near roadways.

15. Handle gasoline with care — it is highly flammable.
  - a. Use approved gasoline container.
  - b. Never add gasoline to a running motor — fill tank out of doors wipe up spilled gasoline.
  - c. Replace gasoline cap securely.
  - d. Open doors if motor is run in garage — exhaust gases are dangerous.
17. Keep machine in good operating condition and keep safety devices in place. Use guards as instructed in owner's manual.

**SPECIFICATIONS**

*(Specifications subject to change without notice.)*

Length Overall .....	65 inches
Wheelbase .....	45½ inches
Width Overall .....	36 inches
Width at Front Wheels .....	33 inches
Height .....	40 inches
Height to Top of Hood .....	35 inches
Approx. Shipping Weight .....	650 lbs.
Crop Clearance .....	7¼ inches
Frame Clearance .....	13 inches
Engine .....	12 H.P.*
Engine Oil Capacity .....	.5 pints
Fuel Capacity .....	2 gallons
Tires (front) 16 x 5.50-8 Pneumatic	
Tires (rear) Terra-Type 23 x 8.50 — 12" Pneumatic (23" wheel dia.)	
Speeds — Infinitely Variable Forward — 0 to 7 M.P.H.	
Reverse — 0 to 3½ M.P.H.	
Turning Radius (to outside of outside wheel) .....	.6' 9"
*Engine Manufacturers Rating	

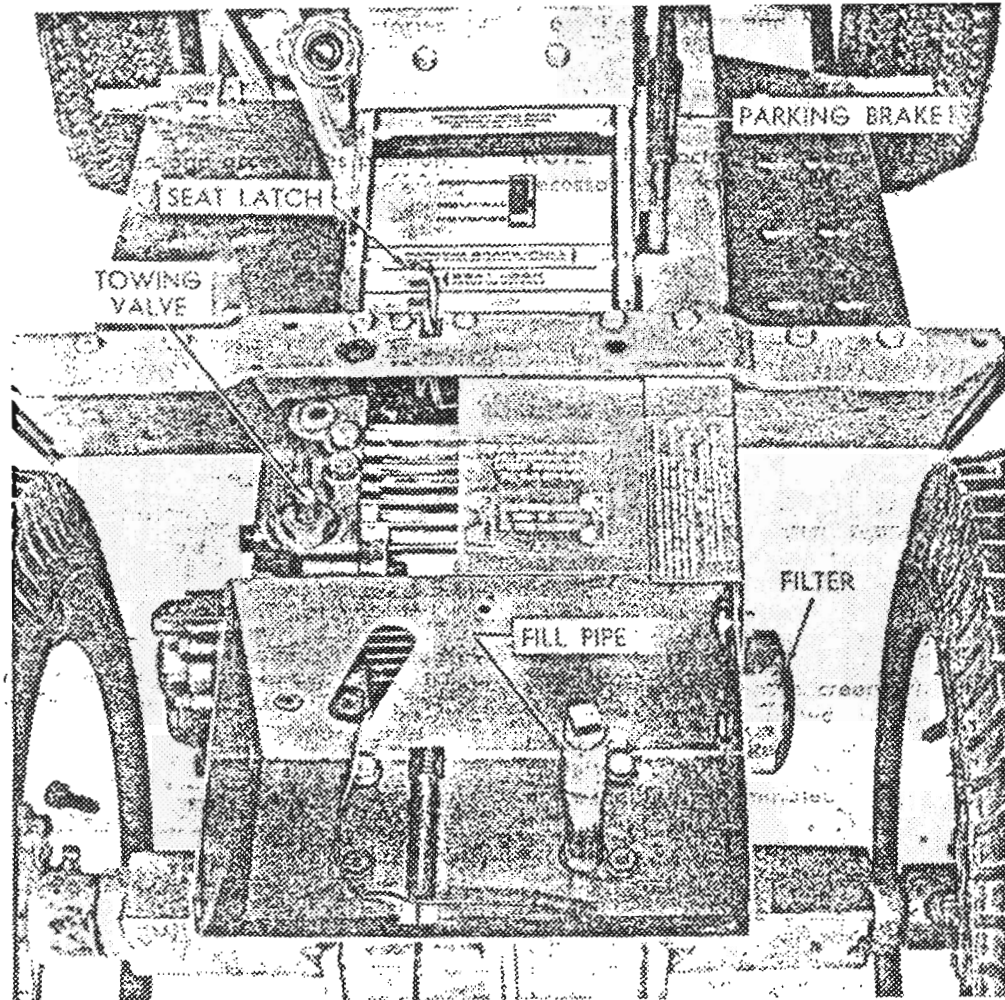


FIGURE II

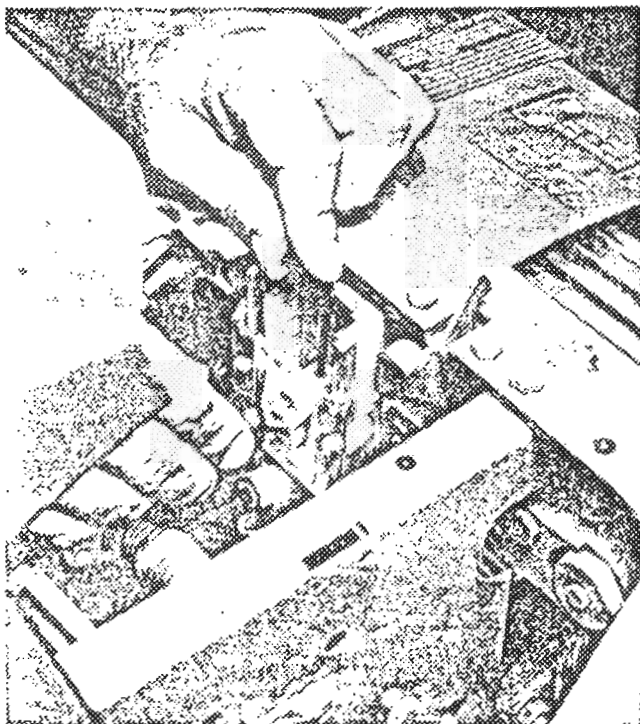


FIGURE III

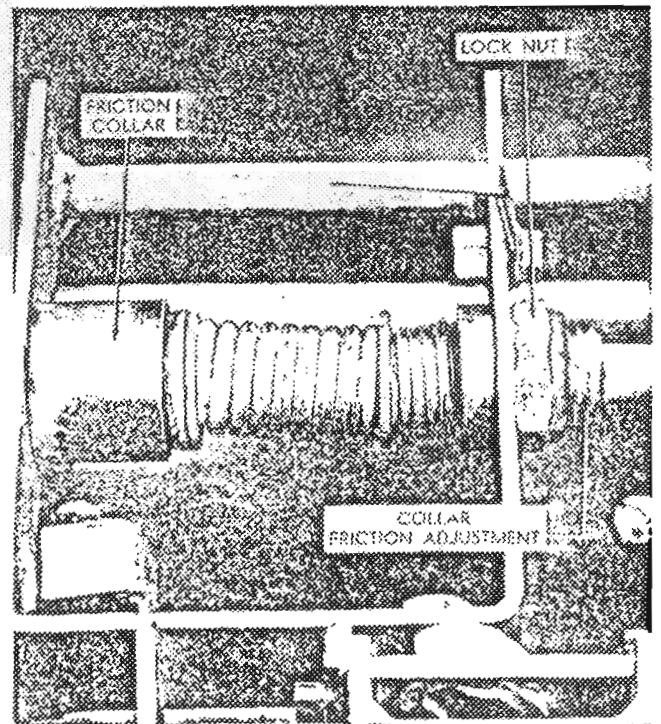


FIGURE IV

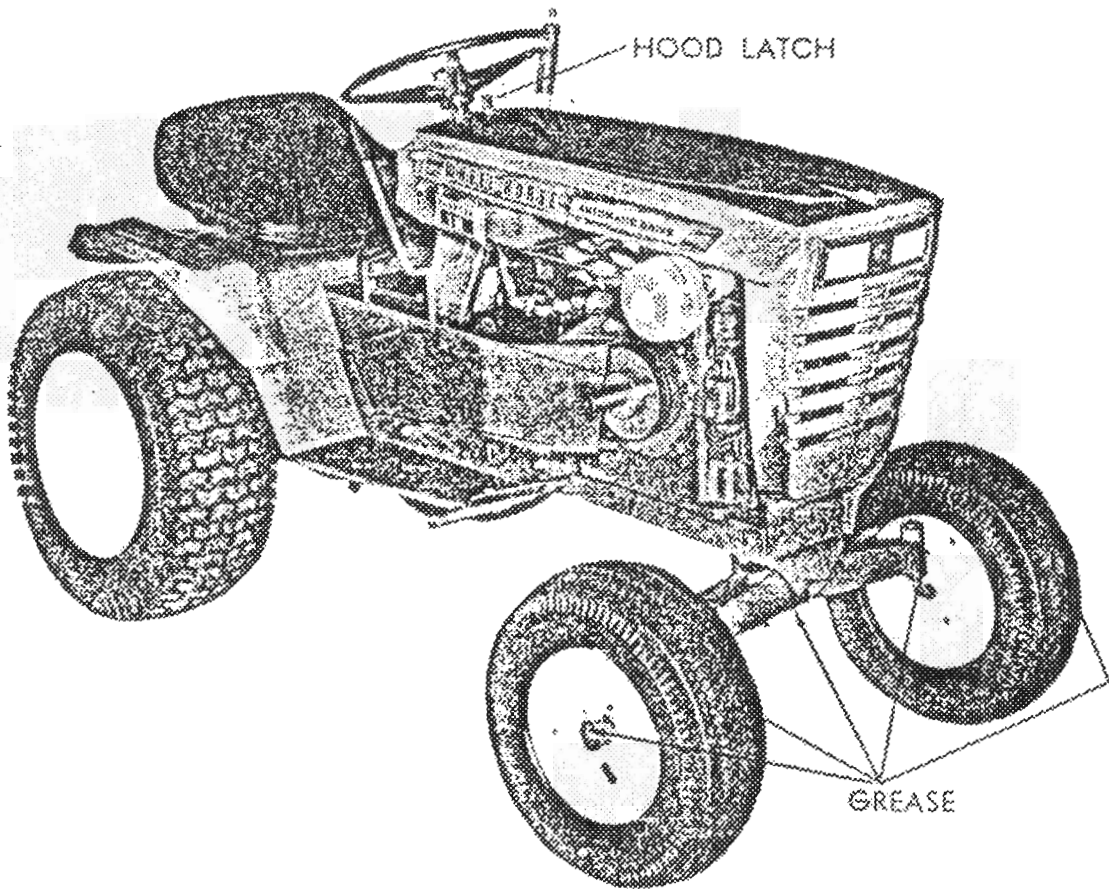
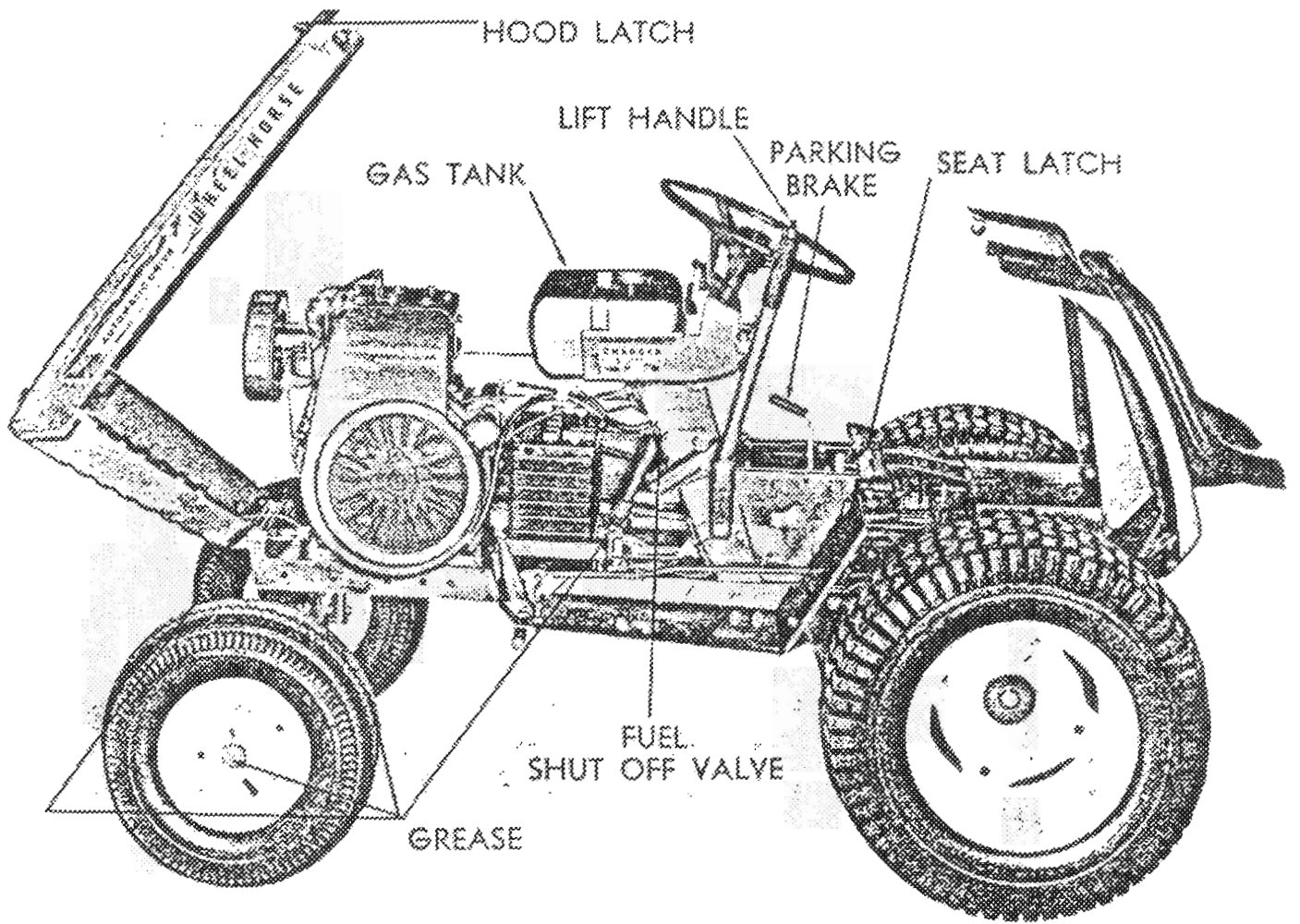
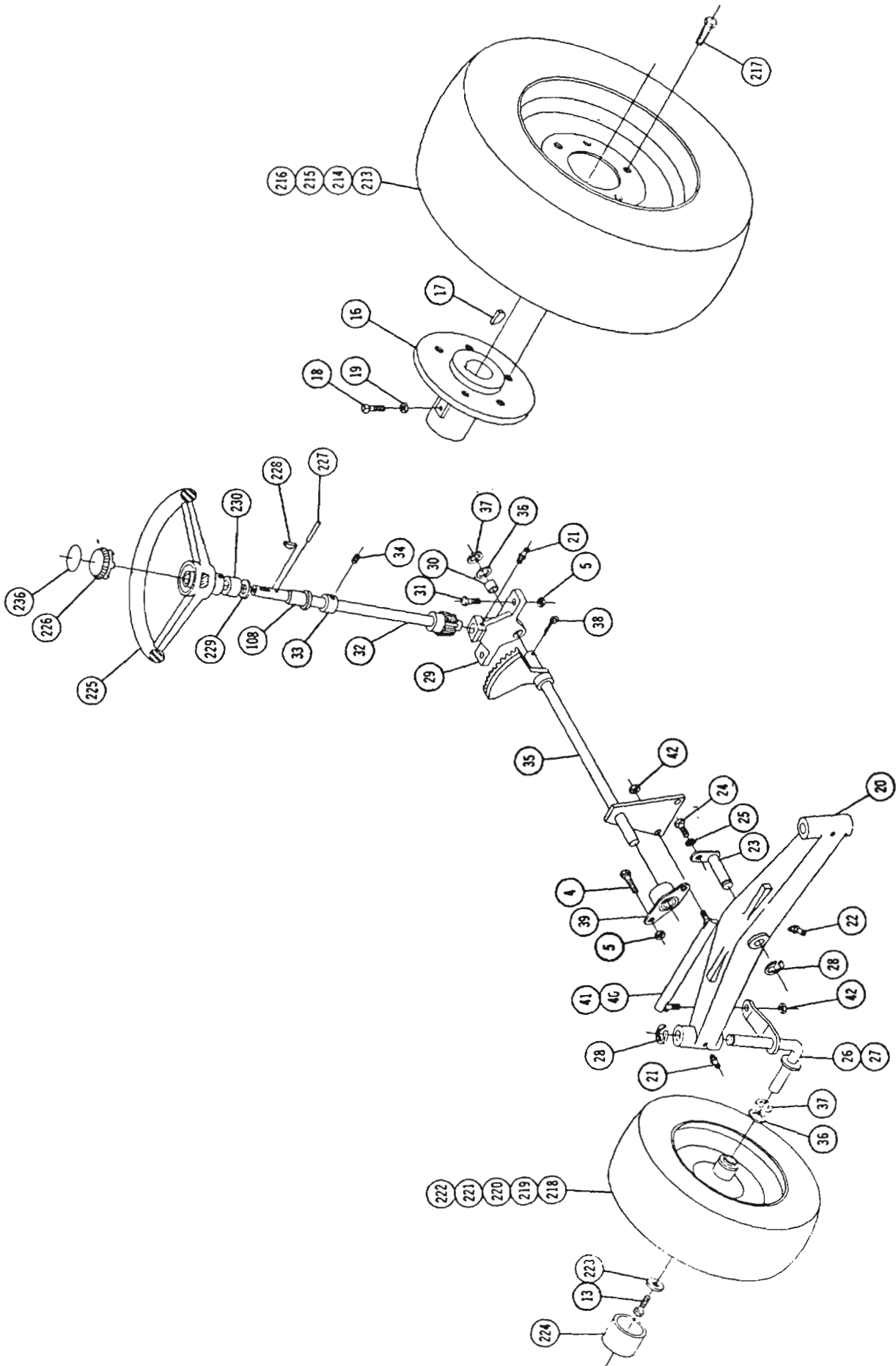
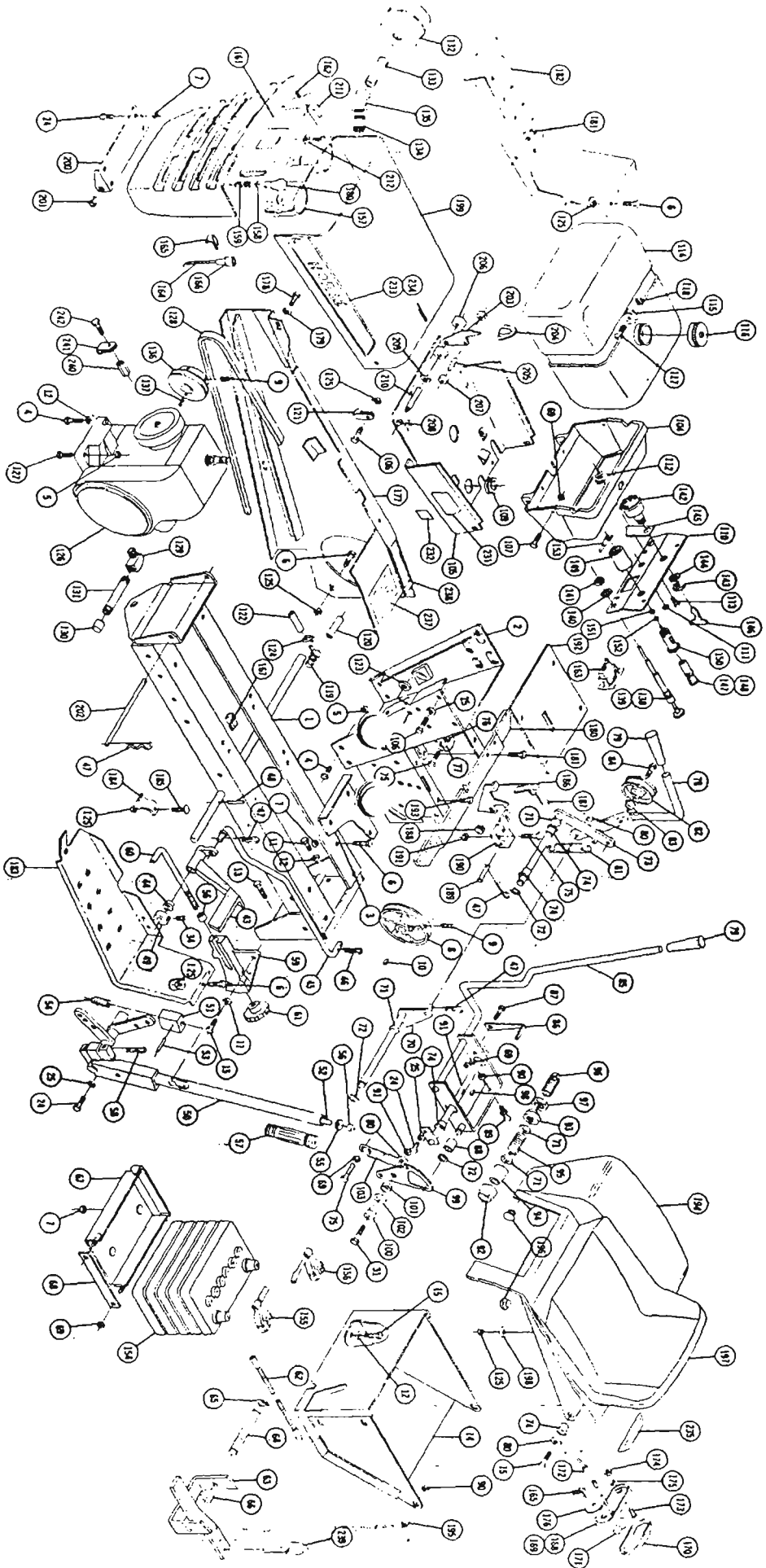


FIGURE V



STEERING & WHEEL ASS'Y.



MAIN FRAME, FENDER & HOOD ASSY.



## TRACTOR PARTS LIST

(See pages 12 and 13 for Transmission break down and Parts List)

When ordering parts always list Part No. and name of part.

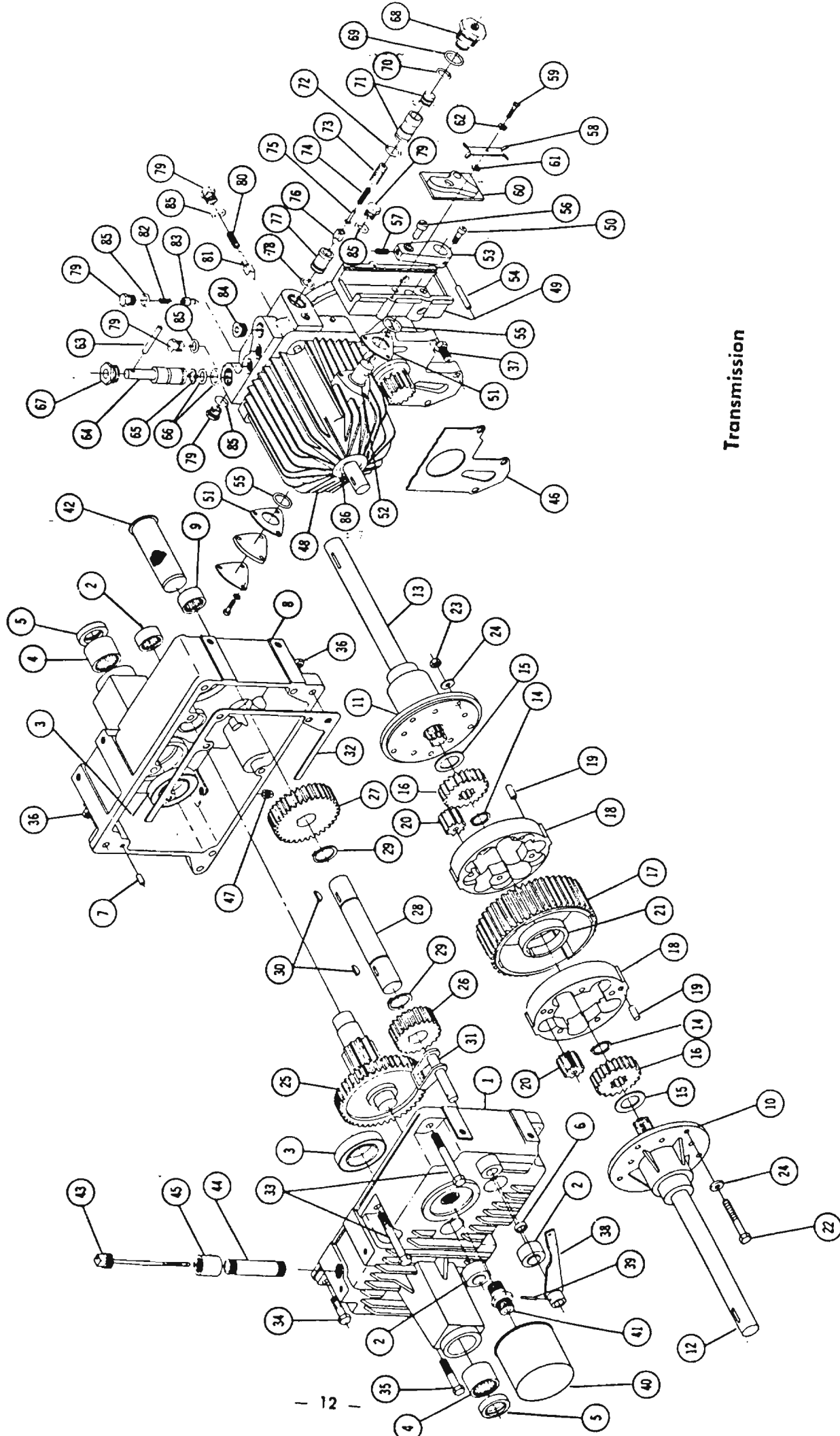
Item No.	Part No.	Description	No. Req'd.	Item No.	Part No.	Description	No. Req'd.
1	7627	Frame Ass'y.	1	61	5280	Knob — Height Control	1
2	7665	Hoodstond Ass'y.	1	62	8277	Conduit	1
3	6825	Dust Cover	1	63	1644	Hitch Ass'y.	1
4	908034-4	Bolt Hex $\frac{3}{8}$ -16 x 1	8	64	1647	Pin	1
5	915663-4	Nut Elastic Stop $\frac{3}{8}$ -16	12	65	936125	Snap Ring	2
6	908017-4	Bolt Hex $\frac{5}{16}$ -18 x $\frac{3}{4}$	12	66	8272	Spacer	2
7	915112-6	Nut $\frac{3}{8}$ -18 Nylok	10	67	7781	Battery Box	1
8	7446	Pulley	1	68	7779	Link — Battery Clomp	1
9	909862-5	Set Screw Nylok $\frac{5}{16}$ -18 x $\frac{5}{16}$	3	69	915111-6	Nut $\frac{1}{4}$ -20 Nylok	8
10	937010	Key #6 Woodruff $\frac{3}{32}$ x $\frac{3}{8}$	1	70	7474	Lever Brake	1
11	908033-4	Bolt Hex $\frac{3}{8}$ -16 x $\frac{7}{8}$	4	71	920011-4	Washer $\frac{1}{2}$ SAE	4
12	920083-4	Lockwasher $\frac{3}{8}$ Dia.	8	72	5701	"E" Ring $\frac{1}{2}$ Dia.	3
13	908033-6	Bolt $\frac{3}{8}$ -16 x $\frac{7}{8}$ Nylok	4	73	6130	Arm & Rod Ass'y.	1
14	6110	Tool Box	1	74	7879	Bushing	5
15	908032-4	Bolt Hex $\frac{3}{8}$ -16 x $\frac{3}{4}$	8	75	908003-4	Bolt Hex $\frac{1}{4}$ -20 x $\frac{3}{4}$	4
16	6465	Hub — Wheel	2	76	915234-4	Nut $\frac{1}{4}$ -20 Jam	1
17	937022	Key #15 Woodruff	2	77	920081-4	Lockwasher $\frac{1}{4}$	1
18	909554	Set Screw Square-Head $\frac{3}{8}$ -16	2	78	7432	Handle — Brake	1
19	915236-4	Nut Hex $\frac{3}{8}$ -16 Jam	2	79	6129	Grip Handle	2
20	5638	Axle Front	1	80	920009-4	Washer $\frac{3}{8}$ SAE	4
21	1030	Grease Fitting	3	81	6135	Spring — Brake	1
22	1487	Grease Fitting 45°	1	82	7434	Pulley Idler	1
23	6216	Pin & Plate Ass'y.	1	83	7435	Spacer	1
24	908015-4	Bolt Hex $\frac{5}{16}$ -18 x $\frac{1}{2}$	9	84	911404-4	Bolt $\frac{3}{8}$ -16 x 1 $\frac{3}{8}$ Special	1
25	920082-4	Lockwasher $\frac{3}{8}$	9	85	7598	Cam Control Arm	1
26	5630	Spindle R.H.	1	86	6128	Indicator — Speed	1
27	5631	Spindle L.H.	1	87	908001-4	Bolt Hex $\frac{1}{4}$ -20 x $\frac{1}{2}$	1
28	5618	"E" Ring $\frac{3}{4}$ Dia.	3	88	MW-2195	Bushing — Bronze	1
29	6396	Support — Steering	1	89	6127	Pin — Cam Block	1
30	6397	Bushing	1	90	915113-6	Nut $\frac{3}{8}$ -16 Nylok	4
31	908035-4	Bolt Hex $\frac{3}{8}$ -16 x 1 $\frac{1}{4}$	3	91	7604	Rod — Cam Pivot	1
32	7447	Shaft Upper Steering	1	92	7599	Collar — Friction	1
33	1085	Collar	1	93	7601	Collar — Bracket Pivot	1
34	909848-5	Set Screw $\frac{1}{4}$ -20 x $\frac{1}{4}$ Nylok	2	94	7600	Cone — Friction	1
35	6469	Steering Shaft Lower	1	95	7602	Spring — Friction	1
36	5210	Washer Shim (.015)	3	96	7603	Collar — Friction	1
37	1278	Washer Shim (.050)	3	97	915241-4	Nut $\frac{3}{4}$ -10 Jam	1
38	932035-4	Cotter Pin $\frac{3}{16}$ x 1 $\frac{1}{4}$	1	98	937007	Key — Woodruff $\frac{1}{8}$ x $\frac{1}{2}$	1
39	6472	Bearing Side Flange	1	99	6142	Plate — Cam Neutral	1
40	5628	Ball Joint R.H.	1	100	6143	Spacer — Cam Plate	1
41	5629	Ball Joint L.H.	1	101	5983	Bushing Nylonin	1
42	915002-6	Nut $\frac{3}{8}$ -24 Nylok	4	102	3765	Washer	1
43	6403	Pedal — Neutral	1	103	1230	Spring	1
44	6254	Bushing	2	104	5450	Housing — Control Panel	1
45	6113	Rod Neutral	1	105	8037	Support — Fuel Tank	1
46	933504-4	Hairpin Cotter	1	106	908016-4	Bolt Hex $\frac{5}{16}$ -18 x $\frac{5}{8}$	5
47	933503-4	Hairpin Cotter	6	107	960152-4	Bolt Whizlock $\frac{1}{4}$ -20 x $\frac{5}{8}$	4
48	933188	Roll Pin $\frac{3}{16}$ x 1	1	108	5409	Bushing — Nylon	1
49	1085	Collar	1	109	5439	Grommet — Rubber	1
50	5448	Lift Lever	1	110	7917	Panel — Dash	1
51	4438	Plunger	1	111	935085-3	Plug Button	1
52	5449	Rod	1	112	5442	Speed Nut #10-16	4
53	933168	Roll Pin $\frac{3}{32}$ x 1 $\frac{3}{16}$	1	113	926303-4	Screw — Self Tap #10-16	4
54	3624	Spring	1	114	8022	Fuel Tank	1
55	3578	Guide — Plunger	1	115	8026	Tank Clamp	1
56	3680	Cap	2	116	1789	Cap Fuel Tank	1
57	1000	Grip — Handle	1	117	909059-4	Bolt Round Head $\frac{1}{4}$ -20 x 1 $\frac{1}{4}$	1
58	933506-4	Hairpin Cotter	1	118	915515-4	Nut $\frac{1}{4}$ -20 Square	1
59	5640	Quadrant	1	119	8023	Valve — Fuel	1
60	2179	Rod Height Control	1	120	8024	Fuel Hose	1

# TRACTOR PARTS LIST

(See pages 12 and 13 for Transmission break down and Parts List)

When ordering parts always list Part No. and name of part.

Item No.	Part No.	Description	No. Req'd.	Item No.	Part No.	Description	No. Req'd.
121	4256	Hose Clip	3	182	7454	Footrest R.H.	1
122	8214	Fuel Hose Valve To Engine	1	183	7455	Footrest L.H.	1
123	5189	Spacer — Valve	1	184	7456	Bracket — Footrest Anchor	2
124	950153	Clamp Corbin $\frac{3}{8}$ Dia.	4	185	900214-4	Bolt — Carriage $\frac{3}{8}$ -18 x $\frac{3}{4}$	2
125	915662-4	Nut — Elastic Stop $\frac{3}{8}$ -18	13	186	7464	Latch — Fender	1
126	8040	Engine 12 H.P. Kohler	1	187	MW-8863	Spring — Fender Latch	1
127	908036-4	Bolt Hex $\frac{3}{8}$ -16 x $1\frac{1}{2}$	2	188	5977	Bushing — Nyliner	1
128	7478	"V" Belt	1	189	7617	Pin — $\frac{3}{8}$ Rod End	1
129	5222	Elbow 90° Special	1	190	7616	Bracket — Fender Latch	1
130	5224	Cap $\frac{3}{8}$ Pipe	1	191	915661-4	Nut $\frac{1}{4}$ -20 Elastic Stop	2
131	943333-4	Nipple $\frac{3}{8}$ x 4	1	192	7559	Plate Cover	1
132	2873	Muffler	1	193	960151-4	Bolt Whizlock $\frac{1}{4}$ -20 x $\frac{1}{2}$	4
133	943367-4	Nipple 1" Pipe x $2\frac{1}{2}$	1	194	7417	Fender	1
134	3947	Nipple 1" Close Pipe	1	195	4937	Spacer	2
135	3939	Elbow 1" Pipe x 45°	1	196	5667	Rubber Bumper	4
136	7443	Pulley — Engine	1	197	7070	Seat	1
137	6507	Key $\frac{1}{4}$ x $\frac{1}{4}$ x $\frac{1}{2}$	1	198	920008-4	Washer $\frac{3}{8}$ SAE	4
138	77926	Control — Choke	1	199	7230	Hood — Ass'y.	1
139	7889	Control — Throttle	1	200	5455	Bracket — Hood Hinge	1
140	920127-4	Lockwasher $\frac{3}{8}$ Shake Proof	2	201	5457	Bushing — Nylon	2
141	71364	Nut Round $\frac{3}{8}$ -18	2	202	6490	Rod — Pivot	1
142	78362	Switch Ignition	1	203	5467	Lever — Hood Latch	1
143	7261	Nut Hex $\frac{3}{8}$ -24	1	204	5469	Knob	1
144	920159-4	Lockwasher $\frac{3}{8}$ Dia.	1	205	933182	Roll Pin $\frac{3}{8}$ x $\frac{3}{8}$	1
145	5451	Insulator — Switch	1	206	5505	Roller — Rubber	2
146	7262	Key Ignition	2	207	5468	Roller Steel	2
147	5480	Cigar Lighter	1	208	915932-4	Nut High Crown #10-24	2
148	5481	Knob & Plug	1	209	5466	Speed Push On $\frac{1}{4}$ Dia.	2
149	5483	Shell	1	210	5522	Rod — Hood Latch	1
150	5482	Socket	1	211	5438	Ornament — Hood	1
151	915562	Nut #8-32 Brass	2	212	5437	Speed Nut — Push On — $\frac{1}{2}$ Dia.	2
152	920078	Lockwasher #8	1	213	5432	Wheel & Tire Ass'y.	2
153	8561	Wire	1	214	5433	Wheel	2
154	7778	Battery	1	215	5434	Tire 23 x 8.50-12	2
155	8562	Wire — Ground	1	216	5435	Valve	2
156	8560	Wiring Harness	1	217	1004	Lug Bolt $\frac{3}{8}$ -20	10
157	7223	Reflector Housing & Socket	1	218	5637	Wheel Tire & Tube Ass'y.	2
158	7226	Wire & Terminal	1	219	5635	Wheel	2
159	7227	Spring	1	220	4999	Ball Bearing	4
160	7228	Bulb (#1156)	2	221	5636	Tire 16 x 5.50-8	2
161	7075	Lens	1	222	5512	Tube	2
162	7229	Screw Self Tap #6-32 x $\frac{3}{8}$	4	223	2844	Washer	2
163	7184	Switch	1	224	7747	Hub Cap	2
164	8468	Harness — Head Light	1	225	7420	Steering Wheel	1
165	3023	Clip	6	226	7469	Insert	1
166	7618	Connector — Three Wire	1	227	933215	Roll Pin $\frac{1}{4}$ x $1\frac{1}{4}$	1
167	8519	Clip	3	228	937014	Key #9 Woodruff	1
168	8021	Tail Light	1	229	7896	Washer — Bowd	1
169	8041	Base — Tail Light	1	230	7468	Collar	1
170	8042	Cover — Tail Light	1	231	7561	Decal — "Charger"	2
171	8043	Bulb 12V — Tail Light	1	232	7570	Decal "12"	2
172	6922	Connector — Two Wire	1	233	7476	Decal — Hood Trim R.H.	1
173	909138-4	Bolt #10-32	2	234	7477	Decal Hood Trim L.H.	1
174	915551-4	Nut Hex #10-32	2	235	8138	Decal — Fender	1
175	920079-4	Lockwasher #10	2	236	7421	Decal — Steering Wheel	1
176	8044	Pad — Tail Light	1	237	7634	Decal — Free Wheeling	1
177	7436	Belt Guard	1	238	7633	Decal — Maintenance	1
178	908045-4	Bolt Hex $\frac{3}{8}$ -14 x $\frac{3}{4}$	1	239	1813	Tool Pin	1
179	920084-4	Lockwasher $\frac{3}{8}$ Dia.	1	240	5431	Nut $\frac{1}{4}$ -20 Special	1
180	7463	Bracket — Footrest	1	241	2879	Clip	1
181	960175-4	Bolt $\frac{3}{8}$ -18 x $\frac{1}{2}$ Whizlock	5	242	960150-4	Screw $\frac{1}{4}$ -20 x $\frac{3}{8}$ Whizlock	1



Transmission

# PARTS LIST

## 5062 TRANSMISSION

When ordering parts always list Part No. and Name of Part.

Item No.	Part No.	Description	No. Req'd.	Item No.	Part No.	Description	No. Req'd.
1	8045	Case R.H.	1	44	943346-4	Nipple 1/2" Pipe x 3 1/2"	1
2	1532	Bearing — Needle 1" I.D.	3	45	943004	Coupling 1/2" Pipe	1
3	1533	Bearing — Ball 1 1/2 I.D.	2	46	5955	Gasket — Pump	1
4	1526	Bearing — Needle 1 1/4 I.D.	2	47	943460	Plug 1/4" Pipe	1
5	6449	Seal 1 1/4 I.D.	2	48	7880	Ass'y. Hydro — Gear Unit (Complete)	1
6	5959	Seal Brake Shaft 1/2" I.D.	1	49	5993	Support — Cam Block	1
7	3915	Pin — Dowel	2	50	911037	Screw — Socket Head 1/4-20 x 1/2	3
8	8047	Case L.H.	1	51	6826	Shim	2
9	5960	Bearing Needle 1" I.D.	1	52	972116	"O" Ring	1
10	8050	End Cap R.H.	1	53	5994	Arm — Cam Follower	1
11	8051	End Cap L.H.	1	54	933215	Roll Pin 1/4 x 1 1/4	1
12	7202	Axle Rear R.H.	1	55	970026	"O" Ring	2
13	7203	Axle Rear L.H.	1	56	5995	Eccentric — Cam Follower	1
14	7169	Snap Ring	2	57	909849-5	Set Screw Nylok 1/4-20 x 3/8	1
15	7199	Washer — Thrust	2	58	5998	Plate Tension	2
16	8053	Gear Axle	2	59	909000-4	Screw Round Head #8-32 x 1/2	2
17	7196	Gear — Differential Ring	1	60	5996	Cam	1
18	7200	Body	2	61	920229-4	Washer	2
19	933209	Roll Pin 1/4 x 1/2	2	62	920078-4	Lockwasher #8	2
20	8056	Gear — Differential Pinion	10	63	933196	Roll Pin 3/8 x 2	1
21	7235	Spring — Cylindrical	1	64	7266	Valve	1
22	908138-4	Bolt 3/8-16 x 3 1/4	5	65	7268	Ring — Back Up	1
23	915663-4	Nut — Elastic Stop 3/8-16	5	66	971113	"O" Ring	2
24	920009-4	Washer — Flat 3/8 SAE	10	67	7267	Plug	1
25	6452	Gear — 44 Teeth — 11 Teeth	1	68	6444	Ass'y. Dampening Valve (with "O" Rings)	2
26	5963	Gear — 22 Teeth	1	69	970118	"O" Ring	2
27	5964	Gear — 33 Teeth	1	70	971015	"O" Ring	2
28	5965	Shaft 1" Dia.	1	71	7054	Ass'y. Piston & Sleeve (Matched Ass'y.)	2
29	936131	Snap Ring 1" Shaft	2	72	971018	"O" Ring	2
30	937014	Key #9 Woodruff	2	73	7264	Spring — Relief Valve	2
31	5966	Assembly — Park Brake	1	74	7052	Spring — Relief Valve	2
32	5999	Gasket — Case	1	75	7051	Seat — Spring	2
33	908143-4	Bolt Hex 3/8-16 x 5	2	76	7050	Cone — Relief Valve	2
34	908038-4	Bolt Hex 3/8-16 x 2	3	77	7049	Sleeve	2
35	908043-4	Bolt Hex 3/8-16 x 3 1/2	1	78	971017	"O" Ring	2
36	915113-6	Nut Nylok 3/8-16	6	79	7752	Plug	7
37	908034-6	Bolt Hex Nylok 3/8-16 x 1	3	80	7753	Spring — Check Valve	2
38	5969	Ass'y. Lever — Brake	1	81	7754	Valve — Check Valve	2
39	933152	Roll Pin 1/8 x 3/4	1	82	7755	Spring — Charge Pump Relief Valve	1
40	5990	Ass'y. — Filter	1	83	7756	Cone — Relief Valve	1
41	5991	Fitting	1	84	943462	Plug — Pipe Hex Socket 1/2-14	1
42	5992	Strainer	1	85	973310	"O" Ring	7
43	6155	Ass'y. Dipstick & Filter	1	86	7877	Seal	1

**\* ATTACHMENTS AVAILABLE FOR  
CHARGER 12**

48" ROTARY MOWER (5-1482)  
42" ROTARY MOWER (5-1422)  
36" ROTARY MOWER — 2 BLADE (5-1362)  
36" ROTARY MOWER — 3 BLADE (5-7365)  
37" SNOW THROWER (6-6211) WITH (6-9111)  
42" DOZER BLADE (6-4112) WITH (6-9621)  
GRADER BLADE (7-1112)  
TILLER (7-1211)  
DISC (7-1512)  
SPIKE TOOTH HARROW (7-1611)  
UTILITY WAGON (7-2111)  
DUMP TRAILER (7-2211)  
LAWN ROLLER (7-2311)  
SPIKE DISC AERATOR (7-2411)  
TWO SECTION CULTIVATOR (7-1722)  
SICKLE BAR MOWER (7-1311)

\*27 OTHER WHEEL HORSE APPROVED  
ATTACHING TOOLS AVAILABLE THROUGH  
YOUR WHEEL HORSE DEALER.

---

**OPTIONAL ACCESSORIES**

ATTACHMENT CLUTCH (8-3111)  
ATTACHMENT CLUTCH — ELECTRIC (8-3511)  
HYDRAULIC POWER LIFT (8-4111)  
ELECTRIC POWER LIFT (8-4211)  
IMPLEMENT HITCH — CLEVIS TYPE A (8-5511)  
IMPLEMENT HITCH — SLOT (8-5521)  
AGRICULTURAL POWER TAKE-OFF (8-3211)  
CHROME WHEEL DISC (8-0512)  
WHEEL WEIGHTS — REAR (8-1111)  
WHEEL WEIGHTS — FRONT (8-1211)  
TIRE CHAINS (8-2511)

# ALL SEASON USE

