

# *Wheel Horse*<sup>®</sup>

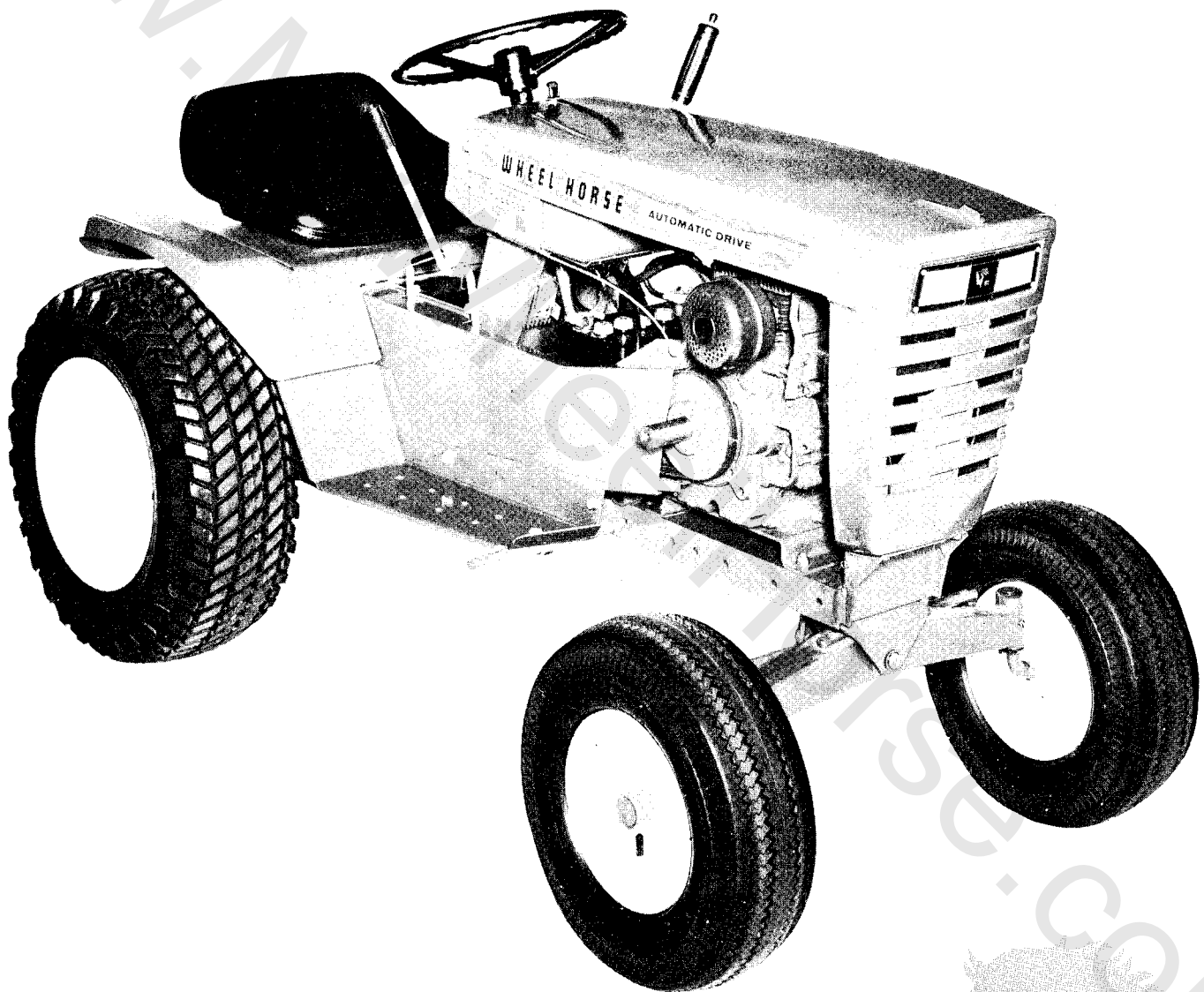
LAWN AND GARDEN TRACTORS

**OWNERS MANUAL**

**CHARGER 10**

**MODEL**

**1-7041**



**WHEEL-HORSE PRODUCTS, INC.**

**SOUTH BEND, IND.**

*"Quality is Standard Equipment in Every Wheelhorse Product"*

## ASSEMBLY

A. The tractor is shipped in one carton with the rear wheel and tire assemblies, Part No. 5432, in a separate carton.

B. Mount rear wheels to hubs using the ten lug bolts, Part No. 1004.

C. Mount front wheels to spindles using the  $\frac{3}{8}$ -16 x  $\frac{7}{8}$  Nylok bolts, Part No. 908033-6 and washers, Part No. 2844. There are two shim washers, one .015 thick and one .050 thick, in the loose part package for each wheel. Use one or both as shown on the exploded view drawing to provide a close fit. Press on hub caps.

D. To mount the steering wheel slip the collar, Part No. 7468, on the steering shaft, insert the Woodruff Key, Part No. 937014, mount the steering wheel, and secure with the  $\frac{1}{4}$  x  $1\frac{1}{4}$  roll pin, Part No. 933215.

## BATTERY

The battery installed in the tractor is a dry charged battery. It is important that you properly prepare this battery to insure good service and long life.

1. Remove vent caps. Remove or destroy any sealing device which may have been used to close or restrict the vent openings.

2. Fill each cell of the battery to the proper level with the battery electrolyte.

**NOTE:** Temperature of battery and electrolyte at time of filling should be above 60°F. Never fill battery in the vehicle.

3. **BOOST CHARGE:** 15 amps. for 10 minutes or 7 amps. for 30 minutes. Adjust electrolyte level, if necessary, after charge.

4. Install battery with battery posts toward the rear of tractor. Start engine. After battery has been in service, add only approved water.

**DO NOT ADD ACID.**

## TIRES

The front tires are 16 x 5.50-8 and should be inflated to 12 pounds of air pressure. **The rear tires are 23 x 8.50-12 and should have 6 to 8 pounds of air pressure.** The tires can also be filled with ballast if desired. Ordinarily this is not necessary as the weight of the operator will add sufficient weight for adequate traction.

## BEFORE YOU START

There is **NO OIL** in the crankcase of the engine when shipped from the factory. **OIL . . .** See Engine Manual.

**Wheel-a-Matic Transmission:** The transmission has been filled with Automatic Transmission fluid at the factory. (This is type "A" automatic transmission fluid, which is used in automobiles and may be purchased at any service station.)

A. The transmission fill pipe is located under the seat. See Fig. II. Remove the fill cap and check level of transmission fluid to make sure transmission is filled to proper level.

B. To enable moving the tractor by hand you must open the towing valve. (**See Towing Instructions.**)

Lubricate all grease fittings with a regular pressure gun lubricant every eight to ten hours of operation. Refer to Figure V for the location of grease fittings.

A light machine oil should be used where indicated.

## OPERATING INSTRUCTIONS

The speed, direction and braking are controlled by the control handle located on the right side.

- To go Forward push the control handle Forward.
- To go Backward pull the control handle Back.
- To Stop put control handle in Neutral position.
- You may also Stop the tractor at anytime by depressing the foot pedal on the left side.

The tractor speed is affected instantly by the movement of the control handle. For safest operation the control handle should not be moved too rapidly, especially on grades.

## TOWING INSTRUCTIONS

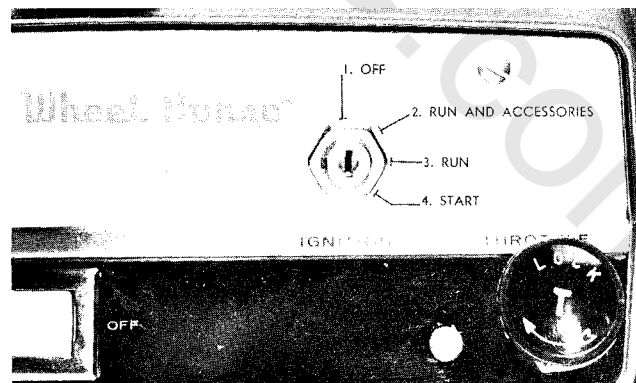
**This tractor should never be towed or pushed without first opening the towing valve.**

A. The towing valve is located on the top surface of the pump. To push or tow follow directions on towing decal. (See Fig. II.)

B. **CAUTION:** Do not tow for long distance or over a speed of seven (7) miles per hour.

## STARTING ENGINE

1. Before starting the engine fill gas tank (located under the hood) with a good grade of regular gas, and open fuel valve located on the left side of the hoodstand below the gas tank.



**FIGURE I**

2. The tractor has a four position key starter-switch. See Fig. 1. Turn key all the way to right, position four, to start engine. After the engine starts the key will automatically return to position three, the run position. The key must be manually moved from run position to the run and accessories position, position two, before the lights, cigar lighter, or electric accessory will function. Any switch, lights, etc. inadvertently left on will automatically be turned off when the key is turned to the off position.

3. Pull throttle lever  $\frac{1}{2}$  way out and turn to the right to lock it in position. **Note:** The throttle control has a locking device. Turn the throttle control to the left to unlock, adjust to the desired position and turn to the right to lock.

4. Pull choke lever all the way out to choke engine. If engine is warm and has been running, choking may not be necessary.

5. When engine starts push choke in to off position and regulate throttle control by turning to the left to unlock and push in or out to desired speed.

6. When starting tractor in cold weather set the park brake. This releases the drive belt, and the engine does not have to turn the transmission.

#### PARKING BRAKE

The parking brake is located on the right side of the tractor. (See Figure V.) To set the parking brake pull on the handle. Brake should always be set when dismounting from tractor, especially on a grade, otherwise the tractor may creep. When brake is set the drive belt is automatically released. **Caution. Do not set parking brake while tractor is in motion as this may result in damage to the transmission.** Always depress foot pedal (on left side) before releasing parking brake.

#### TRANSMISSION CARE

Change oil filter after first ten hours. Change oil and filter every year or 100 hours of operation, whichever occurs first. The transmission oil capacity is approximately four (4) quarts.

- Use only type "A" automatic transmission oil.
- Check oil periodically and maintain at proper level as indicated on dipstick.

#### CARE OF TRACTOR

1. Keep tractor greased and oiled regularly. Refer to Figure V for the location of grease fittings. Check transmission and engine case oil levels.

2. Keep engine air cleaner clean. This will add to engine life.

3. Keep tires properly inflated. See previous instructions.

4. Keep tractor covered and in a dry place when not in use.

5. Keep grass and dirt out of engine cowlings as these will stop the flow of air and decrease engine life.

6. Keep grass and dirt off transmission for good transmission cooling.

7. Battery — Check electrolyte level periodically.

**NOTE:** If tractor has been in storage it may be necessary to recharge battery.

#### 8. Control Handle Friction Adjustment:

The control lever is friction loaded so it will hold at any desired speed. The tension has been adjusted at the factory and should need little or no attention. If the handle does not stay where it is set during operation, the friction may be increased by releasing the locknut and tightening the collar-friction adjustment. (See Figure IV.) The proper amount of friction is obtained when approximately five pounds of force at the handle grip moves the control lever. Be sure to tighten the locknut after proper tension has been reached. The friction collar is self lubricating and does not require lubrication.

#### 9. Neutral Adjustment:

A. If tractor should creep while in neutral position this can be corrected. To check for creep place tractor on level surface with engine running, and depress foot pedal. Creep on slopes is normal and cannot be entirely eliminated.

B. To make neutral adjustment (See Figure III).

1. Block rear wheels off ground.

2. Remove instruction plate, (located in front of the seat) by removing the four screws which hold it.

3. Loosen set screw in arm with allen wrench (See Figure III).

4. Depress foot pedal on left side.

5. With tractor engine running and park brake disengaged, insert short screwdriver through hole in nylon cam and rotate the eccentric cam pin until rear wheels stop. Now retighten set screw in arm and replace plate.

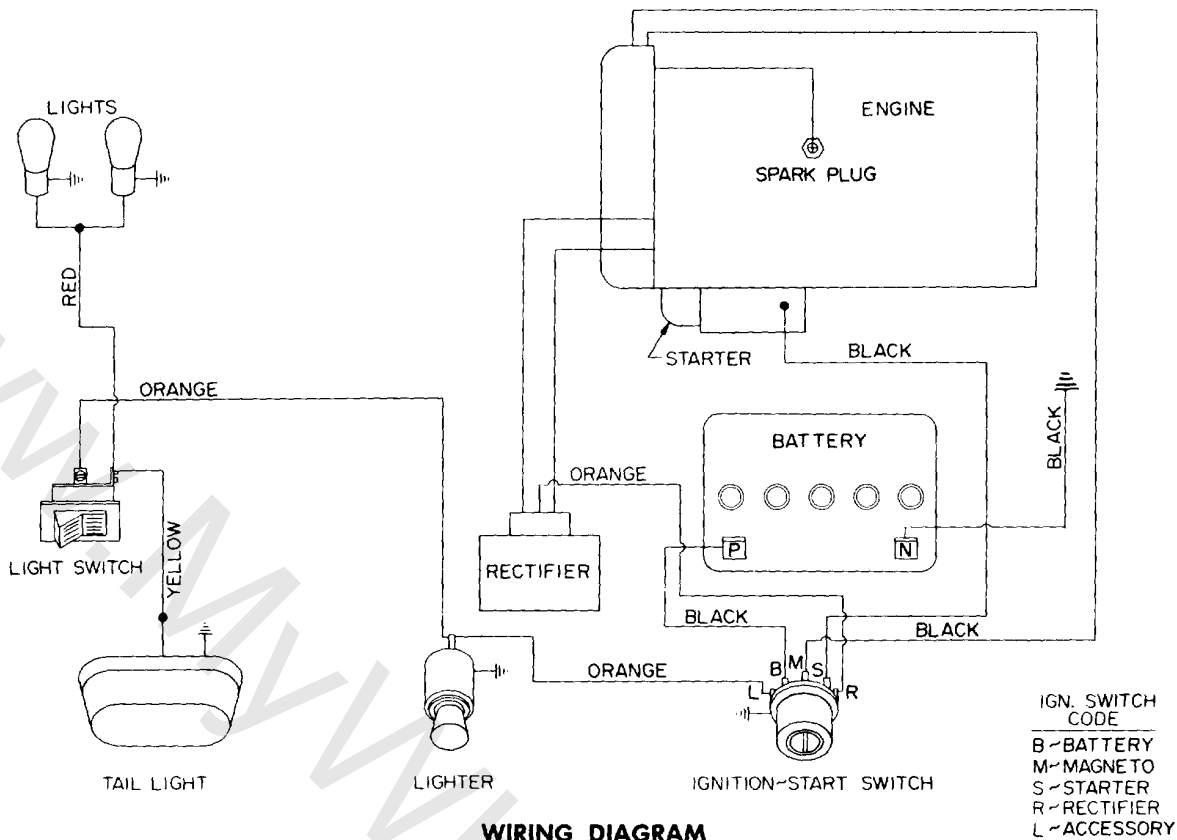
6. **NOTE:** The lobe on the eccentric pin must be upward for proper operation.

10. When replacing belts be sure to purchase genuine Wheel Horse Belts, as these belts are specifically designed for each application. **NOTE:** Make sure all pulleys are in line.

11. Your tractor is only as good as the service you give it. See your Wheel Horse Dealer for a thorough check-up after each season of use.

#### ATTACHING TOOLS

Complete information on the assembly, attachment, operation and service of the many attaching tools will be provided with each attachment.



### SAFETY SUGGESTIONS

Recommended by Outdoor Power Equipment Institute

1. Know the controls and how to stop quickly — read the owners manual.
2. Do not allow children to operate machine; nor adults to operate it without proper instruction.
3. Clear work area of objects which might be picked up and thrown.
4. Disengage all clutches and shift into neutral before starting motor. Keep hands, feet, and clothing away from power driven parts.
5. Do not carry passengers. Keep children and pets a safe distance away.
6. Never direct discharge of any material toward bystanders, nor allow anyone near machine while in operation.
7. Disengage power to attachment (s) and stop motor before leaving operator position.
8. Take precautions when leaving machine unattended (to avoid accidental starting, rolling away, accidental dropping of any attachment, etc.)
9. Disengage power to any attachment whenever it is not in use, or when traveling from one work area to another.
10. Stay alert for holes and other hidden hazards. Know what is behind you, before backing up.
11. Beware of steep slopes; reduce speed on all side slopes and sharp turns, to prevent tipping or losing control.
12. Don't stop or start suddenly when going uphill or downhill.
13. Use care when pulling loads or using heavy equipment.
14. Watch out for traffic when near roadways.

15. Handle gasoline with care — it is highly flammable.

- a. Use approved gasoline container.
- b. Never add gasoline to a running motor — fill tank out of doors wipe up spilled gasoline.
- c. Replace gasoline cap securely.
- d. Open doors if motor is run in garage — exhaust gases are dangerous.

17. Keep machine in good operating condition and keep safety devices in place. Use guards as instructed in owner's manual.

### SPECIFICATIONS

(Specifications subject to change without notice.)

Length Overall	.....	.65 inches
Wheelbase	.....	.45½ inches
Width Overall	.....	.36 inches
Width at Front Wheels	.....	.33 inches
Height	.....	.40 inches
Height to Top of Hood	.....	.35 inches
Approx. Shipping Weight	.....	.636 lbs.
Crop Clearance	.....	.7¼ inches
Frame Clearance	.....	.13 inches
Engine	.....	.10 H.P.
Engine Oil Capacity	.....	.2.5 pints
Fuel Capacity	.....	.2 gallons
Tires (front)	16 x 5.50-8 Pneumatic	
Tires (rear)	Terra-Type 23 x 8.50 — 12" Pneumatic (23" wheel dia.)	
Speeds — Infinitely Variable Forward	— 0 to 7 M.P.H.	
Reverse	— 0 to 3½ M.P.H.	
Turning Radius (to outside of outside wheel)	.....	

\*Engine Manufacturers Rating

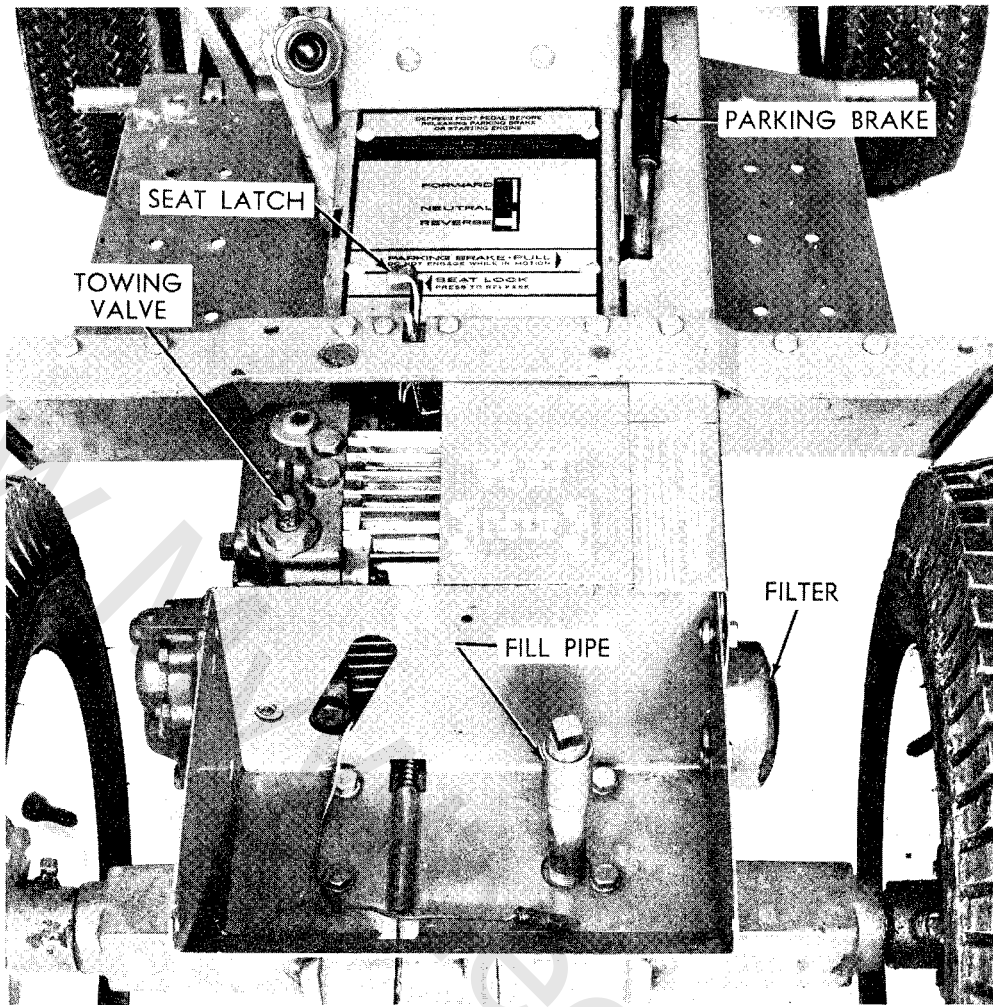


FIGURE II

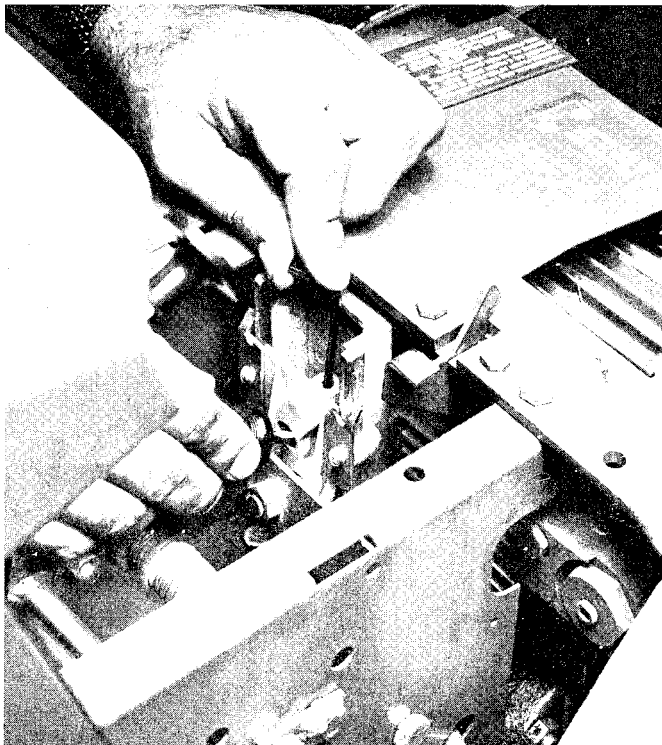


FIGURE III

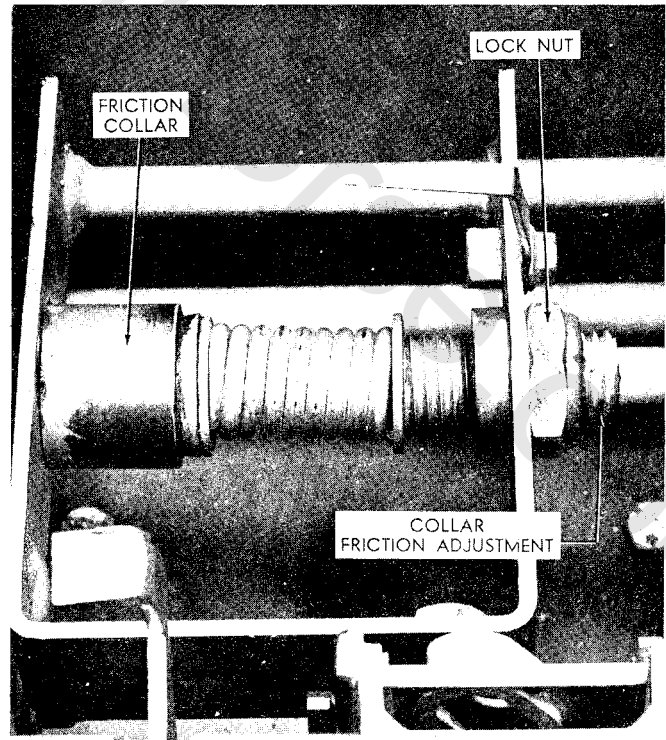
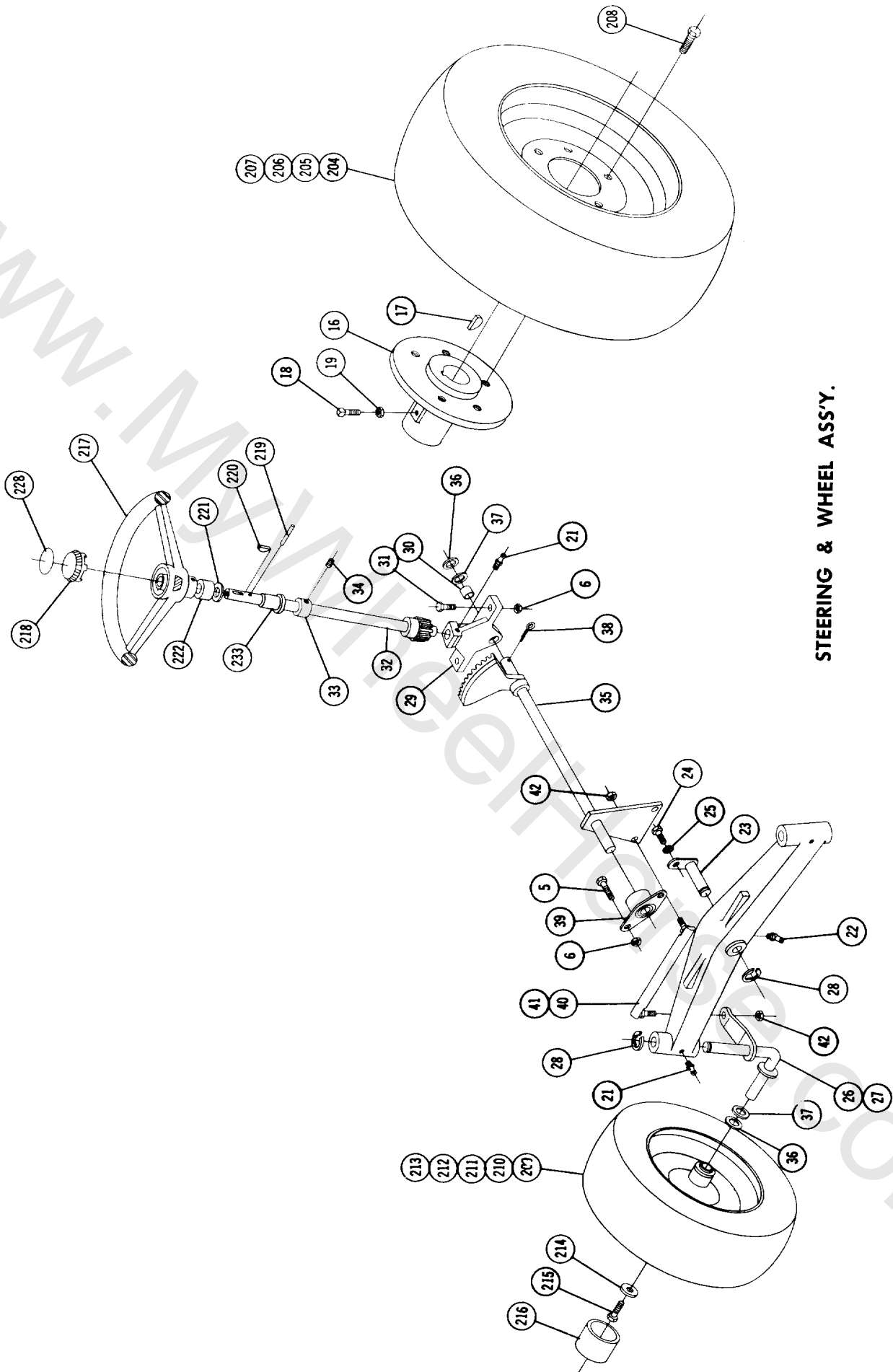
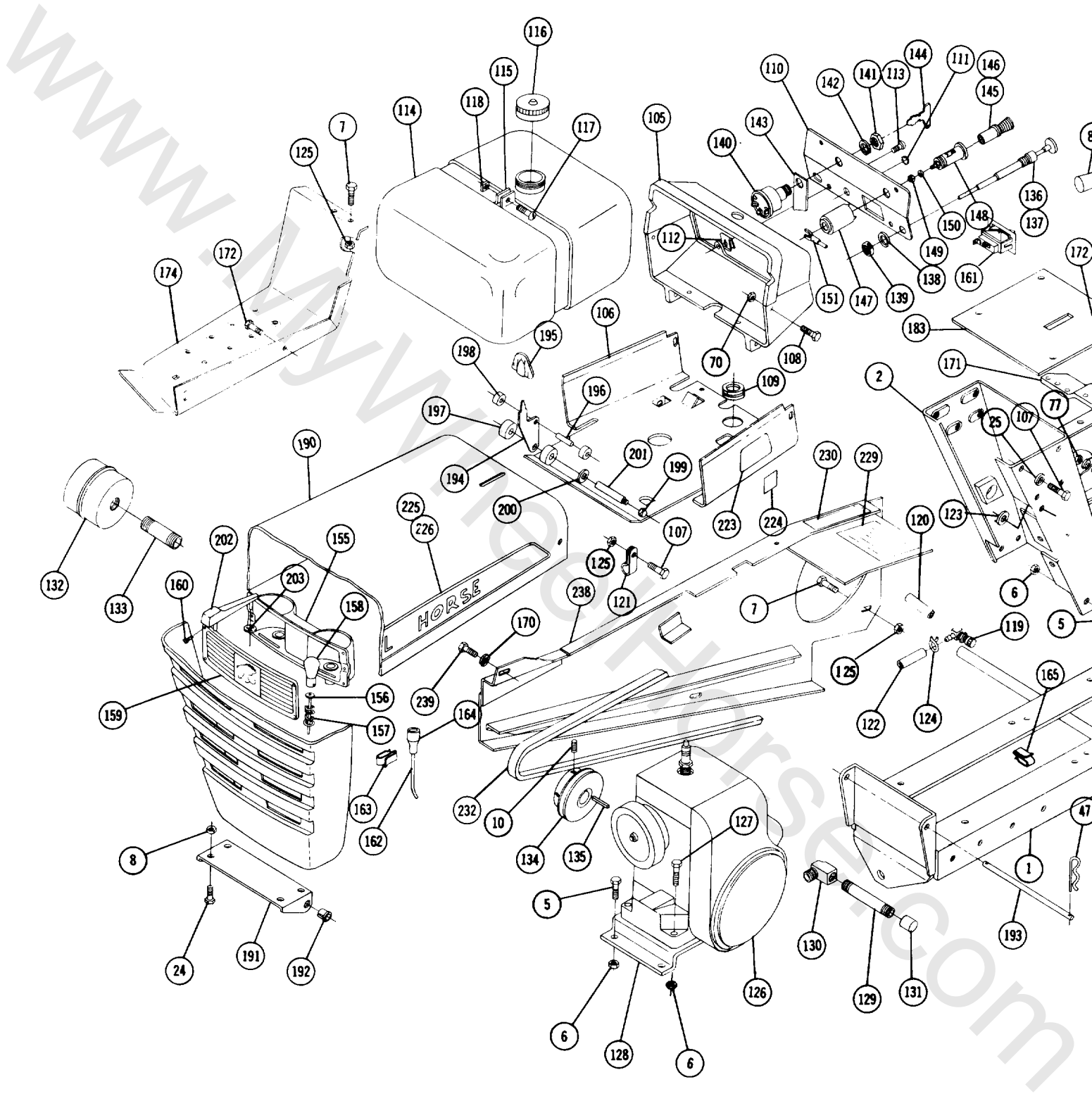


FIGURE IV



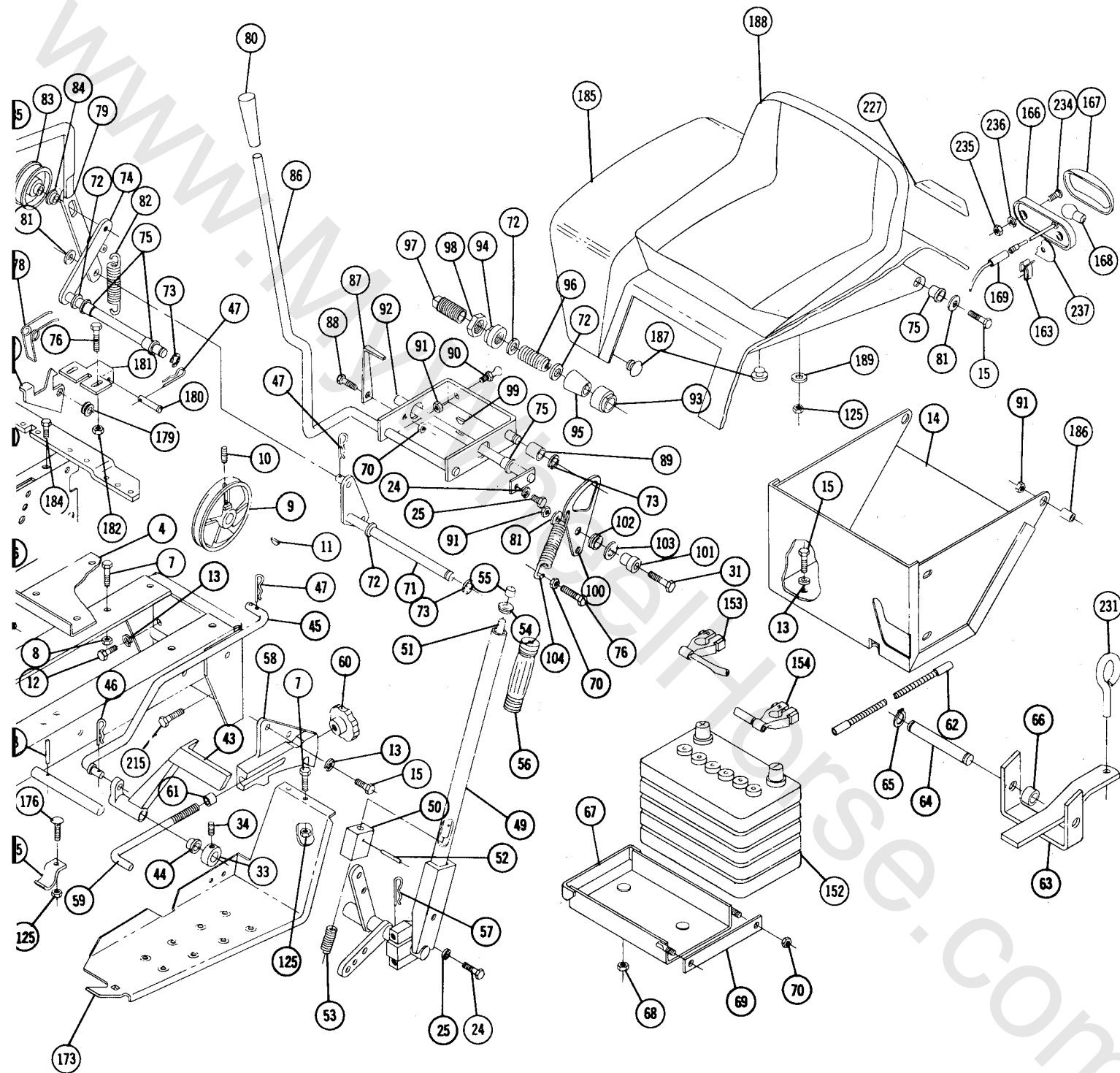


**STEERING & WHEEL ASSY.**



MAIN FRAME, FEN





ER & HOOD ASS'Y.

## TRACTOR PARTS LIST

(See pages 12 and 13 for Transmission break down and Parts List)

When ordering parts always list Part No. and name of part.

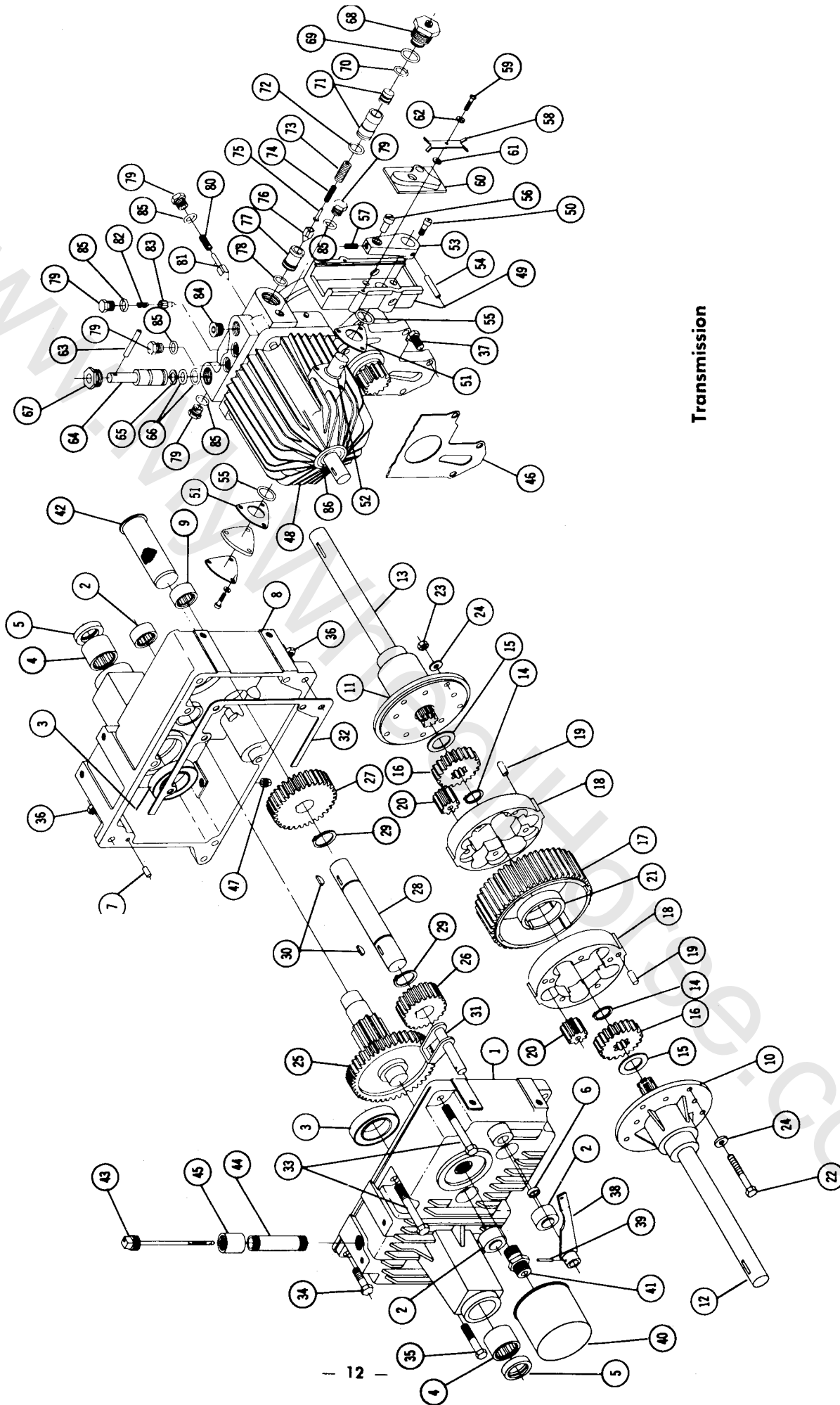
Item No.	Part No.	Description	No. Req'd.	Item No.	Part No.	Description	No. Req'd.
1	7627	Frame Ass'y.	1	61	3680	Cap Height Control	1
2	7665	Hoodstand Ass'y.	1	62	8277	Conduit	1
3	915661-4	Nut 1/4-20 Elastic Stop	2	63	1644	Hitch	1
4	6825	Dust Cover	1	64	1647	Pin	1
5	908034-4	Bolt Hex 3/8-16 x 1	10	65	936125	Snap Ring 3/4 Shaft	2
6	915663-4	Nut 3/8-16 Elastic Stop	16	66	8272	Spacer	2
7	908017-4	Bolt Hex 5/16-18 x 3/4	12	67	7781	Battery Box Ass'y.	1
8	915112-6	Nut 5/16-18 Nylok	8	68	915112-6	Nut 5/16-18 Nylok	2
9	7446	Pulley	1	69	7779	Link — Battery Clamp	1
10	909862-5	Set Screw 5/16-18 x 5/16 Nylok	3	70	915111-6	Nut — Nylok 1/4-20	8
11	937010	Key #6 Woodruff 5/32 x 5/8	1	71	7474	Lever — Brake	1
12	908033-4	Bolt Hex 3/8-16 x 7/8	2	72	920011-4	Washer 1/2 SAE	4
13	920083-4	Lockwasher 3/8 Dia.	8	73	5701	"E" Ring 1/2 Dia. Shaft	3
14	6110	Tool Box Ass'y.	1	74	6130	Arm and Rod Ass'y.	1
15	908032-4	Bolt Hex 3/8-16 x 3/4	8	75	7879	Bushing	5
16	6465	Hub — Wheel 5 Bolt	2	76	908003-4	Bolt Hex 1/4-20 x 3/4	4
17	937022	Key #15 Woodruff	2	77	915234-4	Nut 1/4-20 Jam	1
18	909554	Set Screw Square Head 3/8-16	2	78	920081-4	Lockwasher 1/4	1
19	915236-4	Nut Hex 3/8-16 Jam	2	79	7432	Handle — Brake	1
20	5638	Axle — Front	1	80	6129	Grip — Handle	2
21	1030	Grease Fitting	3	81	920009-4	Washer 3/8 SAE	4
22	1481	Grease Fitting	1	82	6135	Spring — Brake	1
23	6216	Pin and Plate Ass'y.	1	83	7434	Pulley — Idler	1
24	908015-4	Bolt Hex 5/16-18 x 1/2	9	84	7435	Spacer	1
25	920082-4	Lockwasher 5/16	9	85	911404-4	Bolt Special 3/8-16 x 1 5/8	1
26	5630	Spindle R.H.	1	86	7598	Cam Control Arm	1
27	5631	Spindle L.H.	1	87	6128	Speed Indicator	1
28	5618	"E" Ring 3/4 Dia.	3	88	908001-4	Bolt Hex 1/4-20 x 1/2	1
29	6396	Support Steering	1	89	MW-2195	Bronze Bushing	1
30	6397	Bushing	1	90	6127	Pin — Cam Block	1
31	908035-4	Bolt 3/8-16 x 1 1/4	3	91	915113-6	Nut 3/8-16 Nylok	4
32	7447	Shaft Upper Steering	1	92	7604	Rod — Cam Pivot	1
33	1085	Collar	2	93	7599	Collar Friction	1
34	909848-5	Set Screw 1/4-20 x 1/4	2	94	7601	Collar — Bracket Pivot	1
35	6469	Steering Shaft — Lower	1	95	7600	Cone — Friction	1
36	5210	Washer — Shim (.015)	3	96	7602	Spring — Friction	1
37	1278	Washer — Shim (.050)	3	97	7603	Collar — Friction	1
38	932035-4	Cotter Pin 3/16 x 1 1/4	1	98	915241-4	Nut 3/4-10 Jam	1
39	6472	Bearing — Side Flange	1	99	937007	Key Woodruff 1/8 x 1/2	1
40	5628	Ball Joint R.H.	1	100	6142	Plate — Cam Neutral	1
41	5629	Ball Joint L.H.	1	101	6143	Spacer — Cam Plate	1
42	915002-6	Nut 3/8-24 Nylok	4	102	5983	Bushing — Nyliner	1
43	6403	Pedal — Neutral	1	103	3765	Washer 1/2 Dia. Special	1
44	6254	Bushing	2	104	1230	Spring	1
45	6113	Rod — Neutral	1	105	5450	Housing — Control Panel	1
46	933504-4	Hairpin Cotter	1	106	8037	Support — Fuel Tank	1
47	933503-4	Hairpin Cotter	6	107	908016-4	Bolt Hex 5/16-18 x 3/8	5
48	933188	Roll Pin 3/16 x 1	1	108	960152-4	Bolt 1/4-20 x 5/8 Whizlock	4
49	5448	Lift Lever Ass'y.	1	109	5439	Grommet — Rubber	1
50	4438	Plunger	1	110	7917	Panel — Complete	1
51	5449	Rod	1	111	935085-3	Plug Button	1
52	933168	Roll Pin 5/32 x 1 1/8	1	112	5442	Speed Nut #10-16	4
53	3624	Spring	1	113	926308-4	Screw #10-16 Self Tap Type "B"	4
54	3578	Guide — Plunger	1	114	8022	Fuel Tank	1
55	3680	Cap	1	115	8026	Clamp — Tank	1
56	1000	Grip Handle	1	116	1789	Cap — Fuel Tank	1
57	933506-4	Hairpin Cotter	1	117	909059-4	Bolt Round Head 1/4-20 x 1 1/4	1
58	5640	Quadrant	1	118	915515-4	Nut 1/4-20 Square	1
59	2179	Rod Height Control	1	119	8023	Valve — Fuel Shut Off	1
60	5280	Knob Height Control	1	120	8024	Hose — Fuel	1

## TRACTOR PARTS LIST

(See pages 12 and 13 for Transmission break down and Parts List)

When ordering parts always list Part No. and name of part.

Item No.	Part No.	Description	No. Req'd.	Item No.	Part No.	Description	No. Req'd.
121	4256	Clip — Hose	2	181	7616	Bracket — Fender Latch	1
122	8215	Hose Fuel — Valve To Engine	1	182	915661-4	Nut ¼-20 Elastic Stop	2
123	5189	Spacer	1	183	7559	Plate Cover	1
124	950153	Clamp — Corbin	4	184	960151-4	Bolt — Whizlock ¼-20 x ½	4
125	915662-4	Nut ⅝-18 Elastic Stop	13	185	7417	Fender	1
126	7840	Engine 10 H.P. Lauson	1	186	4937	Spacer	2
127	908036-4	Bolt Hex ⅜-16 x 1½	4	187	5667	Bumper — Rubber	4
128	7467	Engine Base	1	188	7070	Seat	1
129	943335-4	Nipple ⅜ Pipe x 5	1	189	920008-4	Washer	4
130	5222	Elbow 90° Special	1	190	7230	Hood Ass'y.	1
131	5224	Cap ⅜ Pipe	1	191	5455	Bracket — Hood Hinge	1
132	2873	Muffler	1	192	5457	Bushing Nylon	2
133	943367-4	Nipple 1" Pipe x 2½	1	193	6490	Rod — Pivot	1
134	7443	Pulley Engine	1	194	5467	Lever — Hood Latch	1
135	6507	Key ¼ x ¼ x ½	1	195	5469	Knob	1
136	7888	Choke — Control	1	196	933182	Roll Pin ⅜ x ⅝	1
137	7890	Throttle — Control	1	197	5505	Roller — Rubber	2
138	920127-4	Lockwasher ⅝ Shake Proof	2	198	5468	Roller — Steel	2
139	1364	Nut Round ⅝-18	2	199	915932-4	Nut — High Crown #10-24	2
140	8362	Switch — Ignition	1	200	5466	Speed Nut ¼ Dia.	2
141	7261	Nut ⅝-24 Special	1	201	5522	Rod — Hood Latch	1
142	920159-4	Lockwasher ⅝ Dia.	1	202	5438	Ornament — Hood	1
143	5451	Insulator Switch	1	203	5437	Speed Nut ½ Dia.	2
144	7262	Key — Ignition	2	204	5432	Wheel and Tire Ass'y.	2
145	5480	Cigar Lighter — Ass'y.	1	205	5433	Wheel	2
146	5481	Knob and Plug	1	206	5434	Tire 23 x 8.50-12	2
147	5483	Shell	1	207	5435	Valve	2
148	5482	Socket	1	208	1004	Lug Bolt ⅝-20	10
149	915562	Nut #8-32 Brass	2	209	5637	Wheel Tire and Tube Ass'y.	2
150	920078	Lockwasher #8	1	210	5635	Wheel	2
151	8561	Wire	1	211	4999	Ball Bearing	4
152	7778	Battery	1	212	5636	Tire 16 x 5.50-8	2
153	8518	Wiring Harness	1	213	5512	Tube	2
154	8562	Wire — Ground	1	214	2844	Washer	2
155	7223	Reflector Housing and Socket	1	215	908033-6	Bolt ⅜-16 x ⅝ Nylok	4
156	7226	Wire and Terminal Ass'y.	1	216	7747	Hub Cap	2
157	7227	Spring	1	217	7420	Steering Wheel	1
158	7228	Bulb #1156	2	218	7469	Insert	1
159	7075	Lens	1	219	933215	Roll Pin ¼ x 1¼	1
160	7229	Screw Self Tap #6-32 x ⅜	4	220	937014	Key #9 Woodruff	1
161	7184	Switch	1	221	7896	Washer — Bowd	1
162	8468	Harness — Head Light	1	222	7468	Collar	1
163	3023	Clip	6	223	7561	Decal Charger	2
164	7618	Connector — Three Wire	1	224	7569	Decal "10"	2
165	8519	Clip	3	225	7476	Decal Hood Trim R.H.	1
166	8041	Base — Tail Light	1	226	7477	Decal Hood Trim L.H.	1
167	8042	Cover — Tail Light	1	227	8138	Decal — Fender	1
168	8043	Bulb 12V Tail Light	1	228	7421	Decal — Steering Wheel	1
169	6922	Connector — Two Wire	1	229	7634	Decal — Free Wheeling	1
170	920084-4	Lockwasher ⅝ Dia.	1	230	7633	Decal — Maintenance	1
171	7463	Bracket — Footrest	1	231	1813	Tool Pin	1
172	960175-4	Bolt Whizlock ⅝-18 x ½	5	232	7478	V Belt Drive	1
173	7454	Footrest R.H.	1	233	5409	Bushing Nylon	1
174	7455	Footrest L.H.	1	234	909138-4	Bolt Round Head #10-32 x ⅝	2
175	7456	Bracket — Footrest Anchor	2	235	915551-4	Nut Hex #10-32	2
176	900214-4	Bolt ⅝-18 x ¾ Carriage	2	236	920079-4	Lockwasher #10	2
177	7464	Latch — Fender	1	237	8044	Pad — Tail Light Mtg.	1
178	MW-8863	Spring — Fender Latch	1	238	7436	Belt Guard Ass'y.	1
179	5977	Bushing — Nylon	1	239	908045-4	Bolt Hex ⅝-14 x ¾	1
180	7617	Pin ⅝ Rod End	1				



Transmission

# PARTS LIST

## 5062 TRANSMISSION

When ordering parts always list Part No. and Name of Part.

Item No.	Part No.	Description	No. Req'd.	Item No.	Part No.	Description	No. Req'd.
1	8045	Case R.H.	1	44	943346-4	Nipple 1/2" Pipe x 3 1/2"	1
2	1532	Bearing — Needle 1" I.D.	3	45	943004	Coupling 1/2" Pipe	1
3	1533	Bearing — Ball 1 1/2 I.D.	2	46	5955	Gasket — Pump	1
4	1526	Bearing — Needle 1 1/8 I.D.	2	47	943460	Plug 1/4" Pipe	1
5	6449	Seal 1 1/8 I.D.	2	48	7880	Ass'y. Hydro — Gear Unit (Complete)	1
6	5959	Seal Brake Shaft 1/2" I.D.	1	49	5993	Support — Cam Block	1
7	3915	Pin — Dowel	2	50	911037	Screw — Socket Head 1/4-20 x 1/2	3
8	8047	Case L.H.	1	51	6826	Shim	2
9	5960	Bearing Needle 1" I.D.	1	52	972116	"O" Ring	1
10	8050	End Cap R.H.	1	53	5994	Arm — Cam Follower	1
11	8051	End Cap L.H.	1	54	933215	Roll Pin 1/4 x 1 1/4	1
12	7202	Axle Rear R.H.	1	55	970026	"O" Ring	2
13	7203	Axle Rear L.H.	1	56	5995	Eccentric — Cam Follower	1
14	7169	Snap Ring	2	57	909849-5	Set Screw Nylok 1/4-20 x 3/16	1
15	7199	Washer — Thrust	2	58	5998	Plate Tension	2
16	8053	Gear Axle	2	59	909000-4	Screw Round Head #8-32 x 1/2	2
17	7196	Gear — Differential Ring	1	60	5996	Cam	1
18	7200	Body	2	61	920229-4	Washer	2
19	933209	Roll Pin 1/4 x 1/2	2	62	920078-4	Lockwasher #8	2
20	8056	Gear — Differential Pinion	10	63	933196	Roll Pin 3/16 x 2	1
21	7235	Spring — Cylindrical	1	64	7266	Valve	1
22	908138-4	Bolt 3/8-16 x 3/4	5	65	7268	Ring — Back Up	1
23	915663-4	Nut — Elastic Stop 3/8-16	5	66	971113	"O" Ring	2
24	920009-4	Washer — Flat 3/8 SAE	10	67	7267	Plug	1
25	6452	Gear — 44 Teeth — 11 Teeth	1	68	6444	Ass'y. Dampening Valve (with "O" Rings)	2
26	5963	Gear — 22 Teeth	1	69	970118	"O" Ring	2
27	5964	Gear — 33 Teeth	1	70	971015	"O" Ring	2
28	5965	Shaft 1" Dia.	1	71	7054	Ass'y. Piston & Sleeve (Matched Ass'y.)	2
29	936131	Snap Ring 1" Shaft	2	72	971018	"O" Ring	2
30	937014	Key #9 Woodruff	2	73	7264	Spring — Relief Valve	2
31	5966	Assembly — Park Brake	1	74	7052	Spring — Relief Valve	2
32	5999	Gasket — Case	1	75	7051	Seat — Spring	2
33	908143-4	Bolt Hex 3/8-16 x 5	2	76	7050	Cone — Relief Valve	2
34	908038-4	Bolt Hex 3/8-16 x 2	3	77	7049	Sleeve	2
35	908043-4	Bolt Hex 3/8-16 x 3 1/2	1	78	971017	"O" Ring	2
36	915113-6	Nut Nylok 3/8-16	6	79	7752	Plug	7
37	908034-6	Bolt Hex Nylok 3/8-16 x 1	3	80	7753	Spring — Check Valve	2
38	5969	Ass'y. Lever — Brake	1	81	7754	Valve — Check Valve	2
39	933152	Roll Pin 1/8 x 3/4	1	82	7755	Spring — Charge Pump Relief Valve	1
40	5990	Ass'y. — Filter	1	83	7756	Cone — Relief Valve	1
41	5991	Fitting	1	84	943462	Plug — Pipe Hex Socket 1/2-14	1
42	5992	Strainer	1	85	973310	"O" Ring	7
43	6155	Ass'y. Dipstick & Filter	1	86	7877	Seal	1

**\* ATTACHMENTS AVAILABLE FOR  
CHARGER 10**

48" ROTARY MOWER (5-1482)  
42" ROTARY MOWER (5-1422)  
36" ROTARY MOWER — 2 BLADE (5-1362)  
36" ROTARY MOWER — 3 BLADE (5-7365)  
37" SNOW THROWER (6-6211) WITH (6-9111)  
42" DOZER BLADE (6-4112) WITH (6-9621)  
GRADER BLADE (7-1112)  
TILLER (7-1211)  
DISC (7-1512)  
SPIKE TOOTH HARROW (7-1611)  
UTILITY WAGON (7-2111)  
DUMP TRAILER (7-2211)  
LAWN ROLLER (7-2311)  
SPIKE DISC AERATOR (7-2411)  
TWO SECTION CULTIVATOR (7-1722)  
SICKLE BAR MOWER (7-1311)

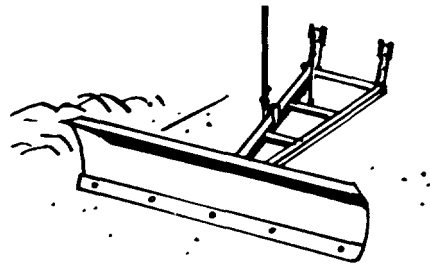
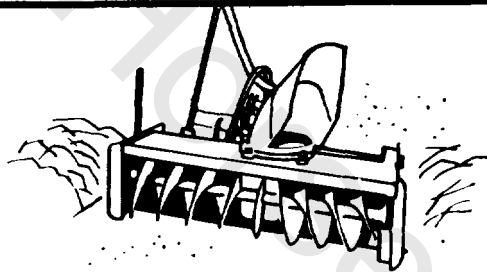
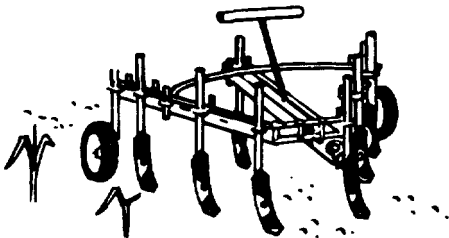
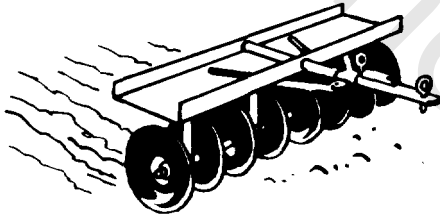
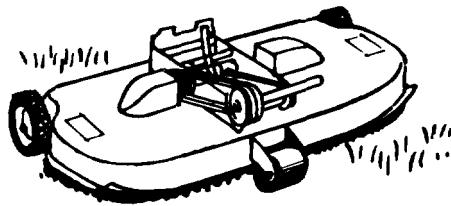
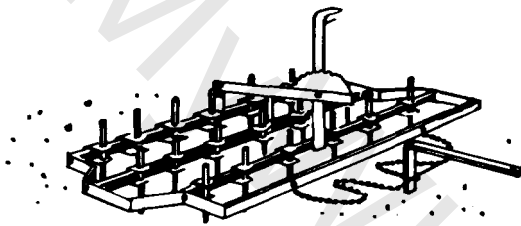
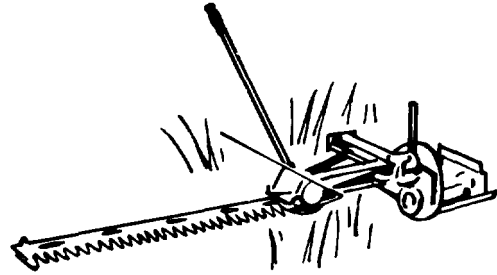
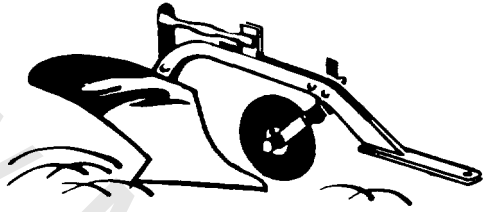
\*27 OTHER WHEEL HORSE APPROVED  
ATTACHING TOOLS AVAILABLE THROUGH  
YOUR WHEEL HORSE DEALER.

---

**OPTIONAL ACCESSORIES**

ATTACHMENT CLUTCH (8-3111)  
ATTACHMENT CLUTCH — ELECTRIC (8-3511)  
HYDRAULIC POWER LIFT (8-4111)  
ELECTRIC POWER LIFT (8-4211)  
IMPLEMENT HITCH — CLEVIS TYPE A (8-5511)  
IMPLEMENT HITCH — SLOT (8-5521)  
AGRICULTURAL POWER TAKE-OFF (8-3211)  
CHROME WHEEL DISC (8-0512)  
WHEEL WEIGHTS — REAR (8-1111)  
WHEEL WEIGHTS — FRONT (8-1211)  
TIRE CHAINS (8-2511)

# ALL SEASON USE



www.Myn



orse.com