



WHEEL HORSE

PARTS MANUAL



Lawn Ranger

**ELECTRIC START
LAWN TRACTOR**

AND

**RECOIL START
LAWN TRACTOR**

1969-1973

SERIAL NUMBERS

Serial and model numbers are necessary to correctly identify your tractor and engine whenever you need repair parts. The tractor model and serial numbers are on a plate attached to the frame to the left of the engine.

The engine model and serial numbers are on a plate attached to the engine crankcase at the rear of the engine.

For your convenience and ready reference, enter these numbers in the spaces below.

MODEL NO.'s	TRACTOR	ENGINE
Electric Start	_____	_____
Recoil Start	_____	_____
SERIAL NO.'s	_____	_____

TO ORDER PARTS FROM THIS MANUAL

1. Find the illustration of the desired part and note its identifying number.
2. Locate the item number in the listings on pages 3 and 4 and determine the part number and description. The letters "EL" after a description indicate that the part is used only on electric start tractors and "RE" indicates use on recoil tractors.
3. Order the part from your local authorized Wheel Horse Dealer.
4. * Indicates the part used only on Models 2-0220 and 2-0230.
** Indicates the part used on all Models except the 2-0220 and 2-0230. All other parts are used on all models.

WHEEL-HORSE PRODUCTS, INC.

515 W. Ireland Road, South Bend, Indiana 46614

Plate 1.1

FRAME

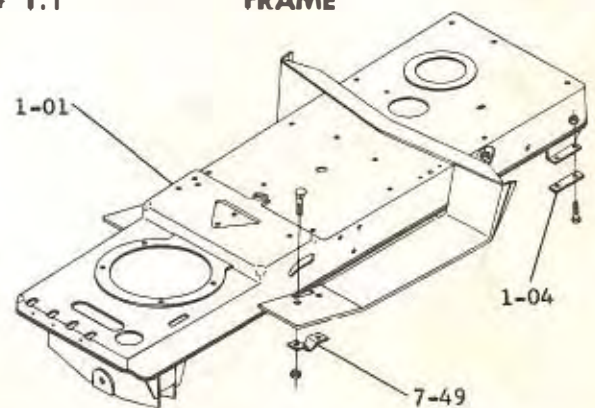


Plate 2.1

TRANSMISSION

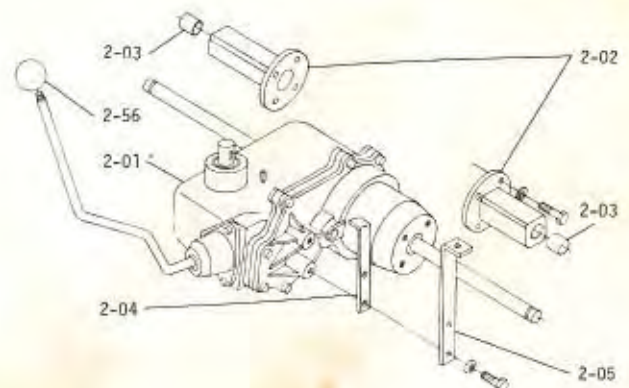


Plate 5.1 FRONT AXLE AND STEERING

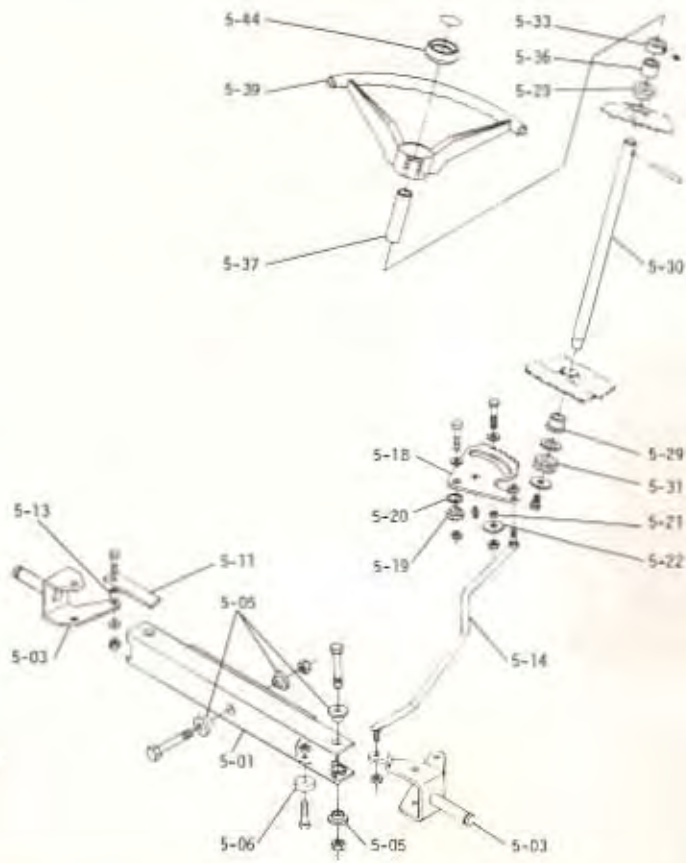


Plate 6.1 BRAKE/CLUTCH LINKAGE

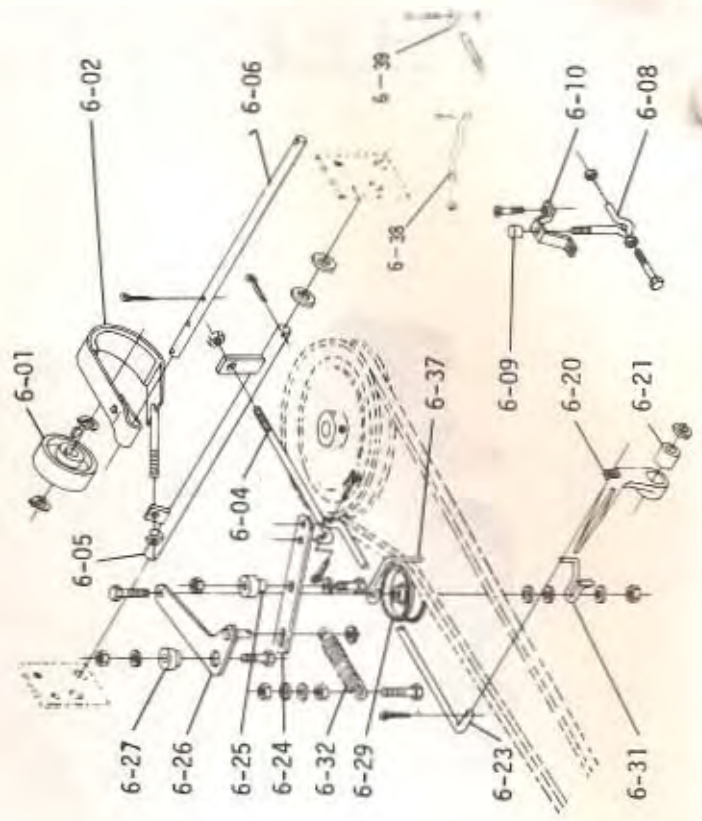


Plate 7.1 HITCH & LIFT LINKAGE

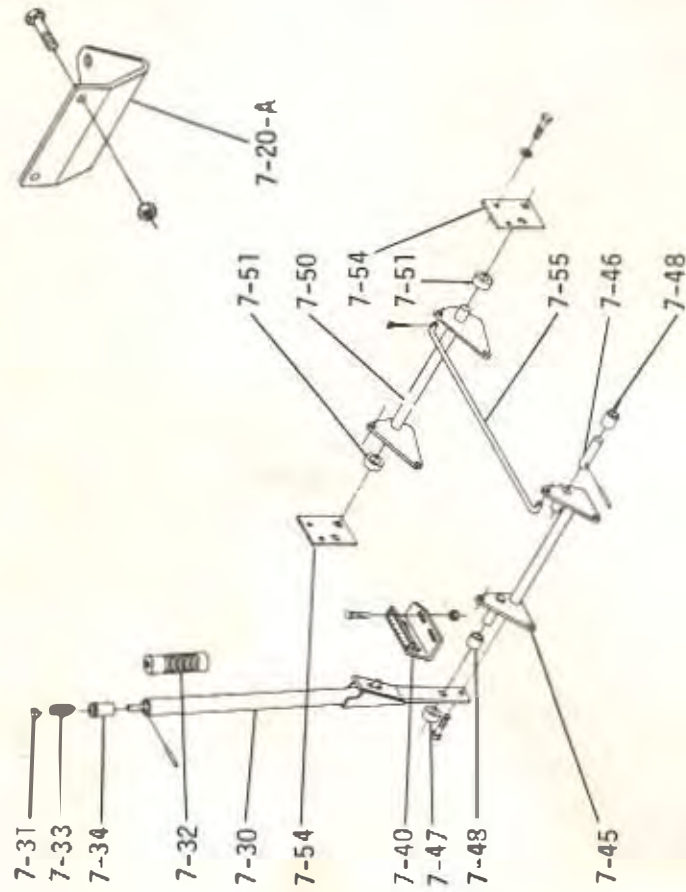
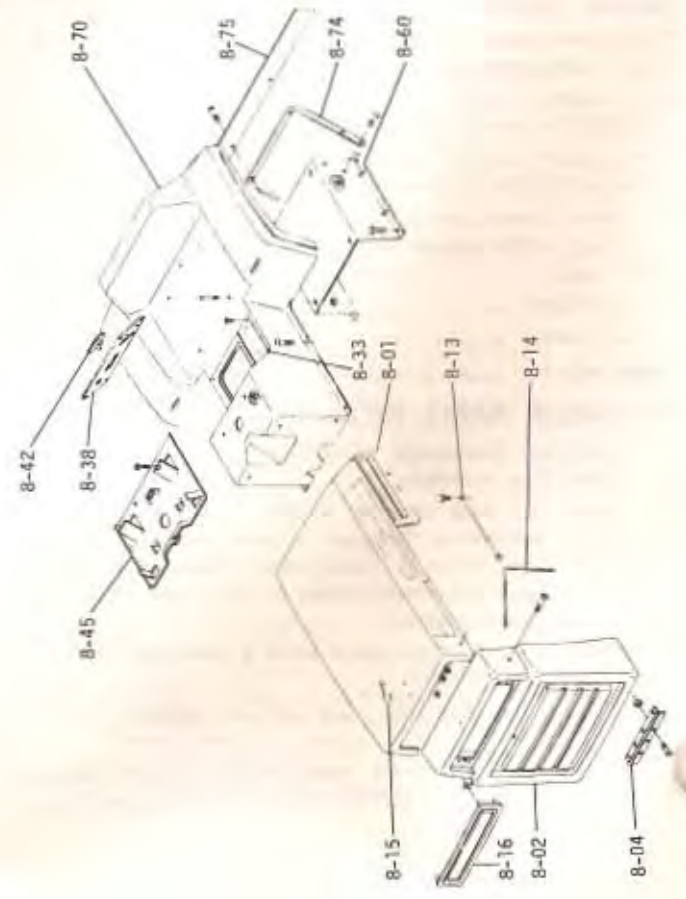


Plate 8.1 SHEET METAL AND COVERS



Item No.	Part No.	Description	No. Req'd.
1.000	FRAME ASSEMBLY (PLATE 1.1)		
1.01	100261	Assy. - Frame	1
1-04	9134	Hanger - Axle	2
	908026-4	Bolt, $\frac{3}{8}$ -18 x $2\frac{3}{8}$ to Frame	1
	915112-6	Nut, $\frac{3}{8}$ -18 Eslok	4
2.000	TRANSMISSION 3 - SPEED (PLATE 2.1)		
2-01	5095	Assy. - Transmission *	1
2-02	9060	Hub - R.H.	1
	9061	Hub - L.H.	1
	908019-4	Bolt, $\frac{3}{8}$ -18 x 1, hub to trans.	8
	920082-4	Lockwasher, $\frac{3}{8}$	8
2-03	MW-5223	Bushing	2
2-04	9820	Guide - Belt	1
2-05	8924	Bracket - Transmission	1
	908019-4	Bolt, $\frac{3}{8}$ -18 x 1, to trans.	2
	920082-4	Lockwasher, $\frac{3}{8}$	2
2-36	1001	Knob	1
5.000	FRONT AXLE AND STEERING (PLATE 3.1)		
5-01	100555	Assy. - Axle - front	1
	5795	Bolt Special	1
	102811	Bushing	4
5-03	8936	Assy. Spindle - R.H.	1
	183154	Assy. Spindle - L.H.	1
5-04	102762	Bolt - Shoulder	2
	920211-4	Washer $\frac{3}{8}$ SAE	2
5-05	101441	Bearing - Sintered iron	6
5-06	180458	Washer - Steering Stop	2
	908033-4	Bolt, $\frac{3}{8}$ -16 x $\frac{3}{8}$	2
	915113-6	Nut, $\frac{3}{8}$ -16 Eslok	6
5-11	8942	Tie Rod	1
5-13	4937	Spacer - Tie Rod - Spindle	2
	908034-4	Bolt, $\frac{3}{8}$ -16 x 1	2
	915113-6	Nut, $\frac{3}{8}$ -16 Eslok	2
	920039-4	Washer, $\frac{3}{8}$ U.S.	2
5-14	100557	Assy. - Rod - Drag Link	1
	915001-6	Nut, $\frac{3}{8}$ Eslok	2
5-18	8890	Sector - Steering	1
	MW-1455	Fitting, Grease	1
5-19	101387	Cam - Steering Adj.	1
5-20	7896	Washer - Spring	1
5-21	101389	Spacer	1
5-22	920217	Washer	1
	908019-1	Bolt, $\frac{3}{8}$ -18 x 1	2
	915112-6	Nut, $\frac{3}{8}$ -18	2
	920008-4	Washer, $\frac{3}{8}$	2
5-29	101442	Bearing - Flanged, sintered iron	2
	5210	Washer, Thrust (.015) lower Brg.	1
5-30	101463	Shaft - Steering	1
5-31	101464	Gear - Steering Pinion	1
	908032-6	Bolt, $\frac{3}{8}$ -16 x $\frac{3}{8}$ Nylok	1
	2844	Washer	1
5-33	1085	Collar - Set	1
	909848-5	Set Screw, $\frac{1}{4}$ -20 x $\frac{1}{8}$ Nylok	1
5-36	979120-4	Tube - Spacer	1
5-37	101467	Steave	1
5-39	102715	Wheel - Steering	1
	933221	Spiral Pin $\frac{1}{4}$ x 2	1
5-44	9067	Insert - Steering Wheel 7 HP **	1
	102716	Insert - Steering Wheel 8 HP **	1
	102856	Insert - Steering Wheel 8 HP *	1
	7421	Dural **	1

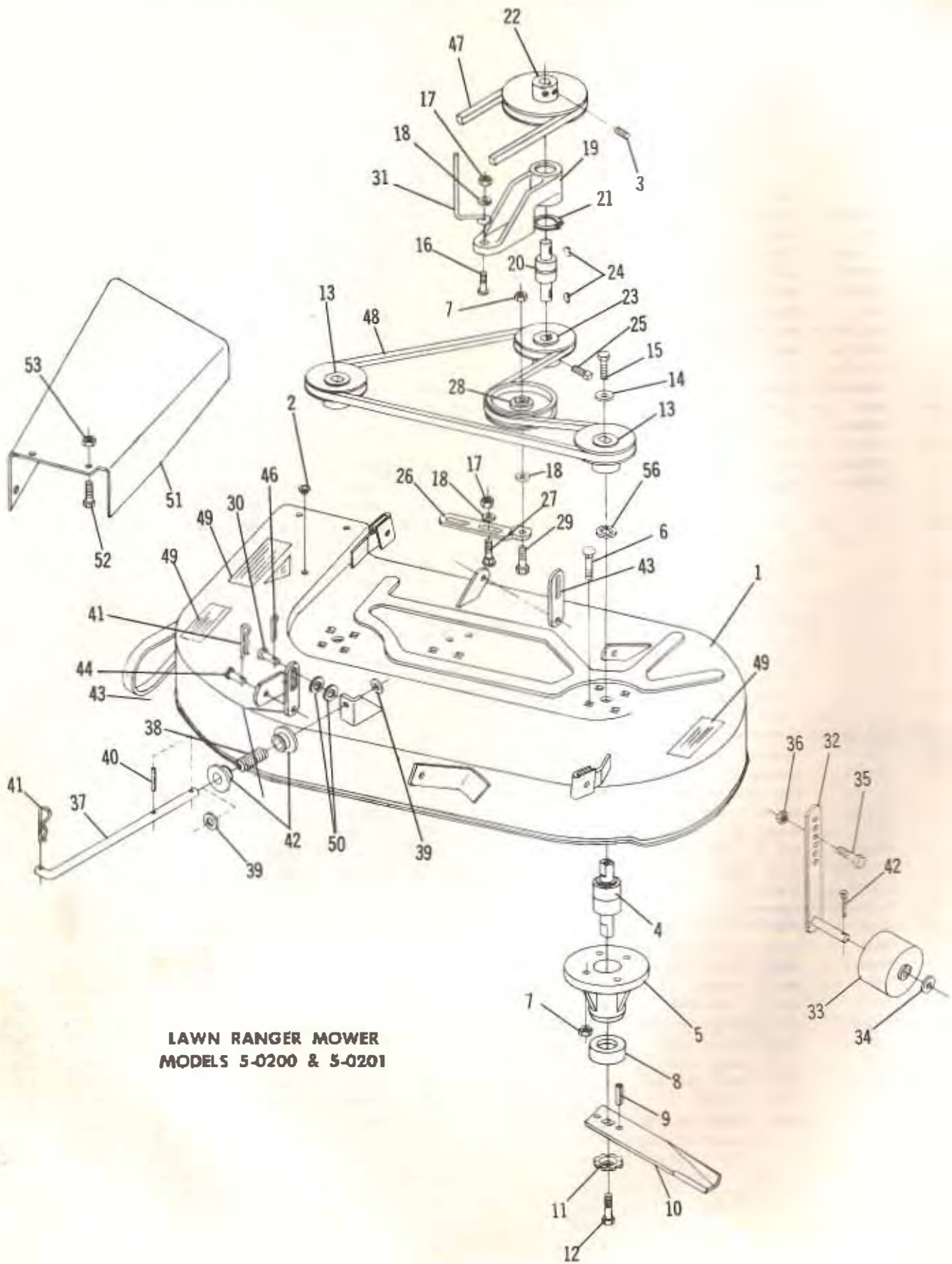
Item No.	Part No.	Description	No. Req'd.
6.000	BRAKE/CLUTCH LINKAGE (PLATE 6.1)		
6-01	9625	Drum - Brake **	1
	937086	Key, #61 Woodruff **	2
	936121	E-Ring **	2
6-02	8908	Assy. - Brake Band **	1
	915663-4	Nut, $\frac{3}{8}$ -16 E. S. **	1
6-04	8929	Rod - Brake Adj. **	1
	915663-4	Nut, $\frac{3}{8}$ -16 E. S. **	1
	932008-4	Cotter Pin **	1
6-05	100553	Assy. - Brake Rod	1
	920013-4	Washer, $\frac{3}{8}$ SAE	2
	932018-4	Cotter Pin	2
6-06	9482	Shaft - Brake Retainer **	1
	932009-4	Cotter Pin **	4
6-08	9709	Handle - Parking Brake	1
	908010-4	Bolt, $\frac{1}{2}$ -20 x $2\frac{1}{4}$	1
	915111-6	Nut, $\frac{1}{2}$ -20 Eslok	2
6-09	6623	Knob (Grip) - Parking Brake	1
6-18	9713	Bracket - Parking Brake	1
	9211	Screw, #10-24 x $\frac{3}{8}$ C.R. Pnn Head	2
6-20	8096	Pedal	1
6-21	9001	Bushing	1
	920013-4	Washer, $\frac{3}{8}$	1
	1278	Washer	1
6-23	8903	Rod - Clutch	1
	932008-4	Cotter Pin	2
6-24	8898	Link - Clutch	1
6-25	9475	Spacer - Link	1
	908036-4	Bolt, $\frac{3}{8}$ -16 x $1\frac{1}{2}$ link to frame	1
	915113-6	Nut, $\frac{3}{8}$ -16 Eslok	1
	920039-4	Washer, $\frac{3}{8}$	1
6-26	180744	Assy. - Idler Arm	1
6-27	9481	Spacer	1
	908035-4	Bolt, $\frac{3}{8}$ -16 x $1\frac{1}{2}$ to frame	1
	915113-6	Nut, $\frac{3}{8}$ -16 Eslok	1
	2844	Washer	2
6-29	MW-8821	Pulley - Idler	1
	908039-4	Bolt, $\frac{3}{8}$ -16 x $2\frac{1}{4}$	1
	915113-4	Nut, $\frac{3}{8}$ -16 Eslok	1
	920039-4	Washer, $\frac{3}{8}$ US	4
6-31	100052	Guide - Belt Guard	1
6-32	1329	Spring	1
	908020-4	Bolt, $\frac{3}{8}$ -18 x $1\frac{1}{4}$	1
	915112-6	Nut, $\frac{3}{8}$ -18 Eslok	2
	920008-4	Washer, $\frac{3}{8}$	2
	920009-4	Washer	1
6-37	6574	Retainer - Bolt	1
6-38	102751	Rod - To Brake Disc *	1
	915663-4	Nut - ES $\frac{3}{8}$ -16 *	1
6-39	2534	Clip - Spring *	1
	183099	Spring - Brake Lever *	1
7.000	HITCH AND LIFT LINKAGE (PLATE 7.1)		
7-20-A	9477	Hitch	1
	908017-4	Bolt, $\frac{3}{8}$ -18 x $\frac{3}{4}$ Mounting	2
	915112-6	Nut, $\frac{3}{8}$ -18 Eslok	2
7-30	101790	Assy. - Lift Lever	1
	908033-6	Bolt, $\frac{3}{8}$ -16 x $\frac{3}{8}$ to lift rod	1
7-31	3680	Cap - Rod End	AR
7-32	6542	Grip - Handle	1
7-33	3624	Spring - Compression	1
7-34	8130	Retainer - Spring	1
	933148	Rollpin, Spring stop	1
7-40	8891	Quadrant - Lift	1
	900037-4	Bolt, $\frac{3}{8}$ -18 x $\frac{3}{4}$ carriage	2
	915112-6	Nut, $\frac{3}{8}$ -18 Eslok	2
7-45	100208	Assy. Front Lift Rod	1
7-46	100214	Pin	1
	933186	Rollpin, $\frac{3}{8}$ x $\frac{3}{8}$ rod to pin	1
7-47	100683	Spacer	1
7-48	9001	Bushing	2
7-49	9483	Retainer	2
	900214-4	Bolt, $\frac{3}{8}$ -18 x $\frac{3}{4}$ } Illustrated with frame	4
	915112-6	Nut, $\frac{3}{8}$ -18 Eslok } Plate 1.1	4
7-50	108205	Assy. - Rear Lift Rod	1
7-51	100686	Spacer	2
7-54	100554	Assy. - Bracket - Lift	1
	908016-6	Bolt, $\frac{3}{8}$ -18 x $\frac{3}{8}$	4
	920082-4	Lockwasher, $\frac{3}{8}$	4
7-55	100552	Rod - Lift Connecting	1
	932008-4	Cotter Pin, $\frac{3}{32}$ x $\frac{3}{4}$	2

Item No.	Part No.	Description	No. Req'd.
8.000	BODY AND COVER PLATES (PLATE 8.1)		
8-01	100628	Assy. — Hood	1
	307444	Pad, Foam 2 x 4 x 3/2	2
8-02	8947	Grill	1
	910298-4	Bolt, 3/8-16 x 1 pan hd. — to hood	2
	915113-4	Nut, 3/8-16	2
	920124-4	Lockwasher, 3/8 E. T.	2
8-04	9377	Hinge — Hood	1
	910807-4	Bolt, #10-32 x 1/2 Pan hd.	7
	5924	Nut, #10-32	7
8-13	9597	Link — Hood Stop	1
	940163-4	Screw, 1/4-28 x 1/2 Whitelock	1
8-14	9460	Cord — Hood Stop	1
8-15	5438	Ornament — Hood	1
	5437	Speed Nut, 1/8 dia. push on	2
8-16	7416	Plate — Escutcheon	1
	7721	Speed Nut, push on	4
8-33	103101	Plate — Shift Pattern	1
	100609	Screw, special	4
8-38	103035	Panel — Complete — Lettered — EL	1
	103034	Panel — Complete — Lettered — RE	1
	100609	Screw, Special	2
8-42	7415	Plug Button — Lights — EL	1
	7476	Clip, Push-on — EL	1
8-45	100483	Support — Fuel Tank	1
	910364-4	Bolt, 3/8-18 x 5/8	4
	915112-6	Nut, 3/8-18 Eslak	4
8-60	8944	Support — Seat	1
	908016-4	Bolt, 3/8-18 x 5/8 to frame	4
	915112-6	Nut, 3/8-18 Eslak	4
8-70	8945	Body	1
	910364-4	Bolt, 3/8-18 x 5/8 pan hd.	8
	915112-6	Nut, 3/8-18 Eslak	8
8-74	9096	Support — Fender	1
	903016-4	Bolt, 3/8-18 x 5/8 to seat support	4
	915112-6	Nut, 3/8-18 Eslak	4
	102673	Brace, Back Rest	1
8-75	100044	Bar — Fender Support	1
	910364-4	Bolt, 3/8-18 x 5/8 pan hd.	2
	915112-6	Nut, 3/8-18 Eslak	2
8-91-A	102718	Mat, RH Footrest	1
	102719	Mat, LH Footrest	1
	910364-4	Bolt, 3/8-18 Pan hd.	4
	915112-6	Nut, 3/8-18 Eslak	4
9.000	ENGINE (PLATE 9.1)		
9-01	8892	Engine 7 HP	1
	908022-4	Bolt, 3/8-18 x 1 1/2 Eng. Mt.	1
	908019-4	Bolt, 1/2-18 x 1 Eng. Mt.	3
	920088-4	Washer, 3/8	4
9-01	100605	Engine — 8 HP	1
	926692-4	Bolt, 3/8-18 x 1 1/2	4
	9107	Spacer	1
9-06	943308	Nipple — 1/4 x 1 1/4 Oil Drain	1
9-03	4217	Cap — 1/2 Pipe	1
10.000	FUEL AND EXHAUST SYSTEMS (PLATE 10.1)		
10-01	9112	Choke and Throttle Control	1
	911781-4	Bolt, 1/4-20 x 1/2	2
10-04	8623	Knob, Control	1
10-20	8028	Tank, Fuel	1
10-21	102321	Cap, Tank	1
10-22	100147	Wire, Tank Hold Down	1
10-25	4949	Spring	1
10-31	100327	Filter Assy.	1
10-32	8714	Hose 8 1/2" Long	AR
10-33	101349	Clamp, Hose — Adjustable	1
10-34	950154	Clamp — Carburetor 1/2	AR
	950153	Clamp — Carburetor 3/8	AR
10-40	9817	Muffler Assy. 7 HP	1
	102269	Muffler, Assy. 8 HP	1
10-41	7842	Gasket-Exhaust Flange	1
10-42	100560	Shield-Heat 7 HP	1
	102643	Shield-Heat 8 HP	1
10-43	9985	Bar-Support	1
	908016-4	Bolt, 3/8-18 x 5/8	1
	908027-4	Bolt, 3/8-18 x 3	2
	908146	Bolt, 3/8-18 x 3 1/2 8 HP	2
	915112-4	Nut, 3/8-18	2
	920082-4	Lockwasher 3/8	2

Item No.	Part No.	Description	No. Req'd.
11.000	ELECTRICAL SYSTEM (PLATE 11.1)		
11-01	100095	Harness — EL **	1
	103031	Harness — EL *	1
	102970	Harness — EL *	1
	101861	Clamp	2
	908032-4	Bolt, 1/4-20 x 3/4	1
11-03	8655	Wire — Bat. to Grd. — EL	1
11-20	101482	Switch — EL **	1
	102931	Switch — EL *	1
	102820	Switch — RE *	1
	101884	Nut — 3/8-32 *	1
	7261	Nut — 3/8-24 **	1
11-21	7262	Key — EL	1
	102801	Key — REC *	1
11-40	100503	Battery — EL	1
11-41	100438	Cap — Battery — RE	6
11-43	5851	Strap — Battery — RE	1
11-44	8107	Hook — Battery Clamp — EL	1
	915111-6	Nut — 1/2-20 Eslak	2
	920007-4	Washer 1/4	2
11-45	103105	Wire — Bat. to Sol. — EL *	1
	3666	Wire — Bat. to Start — EL	1
	8658	Solenoid — EL *	1
11-47	102986	Hanger — Solenoid — EL *	1
	960161-4	Bolt — Whitelock 1/4-20 x 1/2 — EL	2
	915111-6	Nut — Eslak 1/2-20 — EL	2
	915000-6	Unit — Eslak 1/2-28 — EL	2
11-48	102966	Switch Ig. Interlock — REC *	1
	903017-4	Bolt — Hex 3/8-18 x 3/4 — RE	1
	915112-6	Nut — Eslak 3/8-18 — RE	1
	103205	Lever — Fix *	2
11-49	102965	Switch — Clutch Interlock *	2
11-50	103311	Bracket — Sw. Mounting *	1
	910767-4	Screw Phos. #6-32 x 7/8	4
	915536-4	Nut — Hex #6-32	4
	908001-4	Bolt — Hex 1/8-20 x 3/2	4
	915111-5	Nut — Eslak 1/4-20	4
	103312	Bracket — Sw. Mtg — Rear *	1
11-51	3023	Retainer — Wire	AR
11-52	8830	Clip	1
11-53	938007	Bushing — Wire	1
11-54	938018	Bushing — Wire	1
13.000	WHEELS, TIRES, TUBES (PLATE 13.1)		
13-01	8187	Assy. — Wheel and Tire — Front	2
13-02	9068	Assy. — Wheel and Tire — Rear	2
13-03	8118	Assy. — Wheel and Bearing — Front	2
13-04	9064	Wheel — Rear (Integral Hub)	2
	937017	Key, #11 Woodruff 3/8 x 1/2	2
	936125	Sprocket	2
	1278	Washer, Shim (.050)	4
	5435	Valve — Tubeless Tire	4
13-05	8188	Tire — 13 x 5.00 — 6 Front	2
13-06	9065	Tire — 16 x 6.50 — 8 Rear	2
13-07	100043	Tube — 13 x 5.00 — 6 (Service Only)	AR
	5512	Tube — 16 x 6.50 — 8 (Service Only)	AR
13-10	100166	Bearing — Flanged	4
	5618	E-Ring, 3/4 Dia.	2
	1278	Washer, Shim (.050)	4
13-21	8120	Hub Cap	4
14.000	DRIVE BELT, PULLEYS (PLATE 14.1)		
14-01	8911	V-Belt — Drive	1
14-02	8925	Belt Guide — Drive Belt	1
14-03	8909	Pulley — Engine Main Drive	1
	2590	Key, crankshaft	1
	909862-5	Set Screw	1
14-10	9470	Pulley — Trans. Main Drive	1
	937036	Key, #6 Woodruff 3/8 x 3/8	1
	909540-4	Set Screw, Sq. Head	2

Item No.	Part No.	Description	No. Req'd.	Item No.	Part No.	Description	No. Req'd.
14.020 P.T.O. CLUTCH (PLATE 14.2)							
14-20	100308	Handle — Engage Lever	1	1	100595	Deck	1
14-21	8593	Knob — Plain Hole	1	2	100146	Plug & Union	1
	8722	Knob — #10-24 Thread	1	3	909862-5	Set Screw $\frac{3}{16}$ x $\frac{3}{16}$	2
14-22	910797-4	Screw, #10-24 x $1\frac{1}{2}$	1	4	103119	Bearing	2
	9117	Bracket — Engage Lever	1	5	8389	Housing	2
14-23	101224	Washer — Rubber	1	6	900234-4	Bolt — Corriego $\frac{3}{8}$ -16 x 1	8
	908036-4	Bolt, $\frac{3}{8}$ -16 x $1\frac{1}{2}$	3	7	915113-6	Nut $\frac{3}{8}$ -16 Elok	9
	915113-6	Nut, $\frac{3}{8}$ -16 Elok	3	8	102780	Cup — Spindle	2
	930039-4	Washer, $\frac{3}{8}$ U.S.	1	9	933211	Roll Pin $\frac{1}{2}$ x $\frac{3}{4}$	4
14-24	9082	Rod — Engage Lever	1	10	100355	Blade — Mower (2-Blade Kit)	1
	923006-4	Cotter Pin	1	11	1336	Washer — Dome	2
14-25	5791	Stud — Trunnion	1	12	908033-5	Bolt — Nylon $\frac{3}{8}$ -16 x $\frac{1}{2}$	2
	923505-4	Hairpin Cotter	1	13	101230	Pulley — Blade	2
14-26	100559	Asy. — Engaging Link	1	14	2844	Washer — Special	2
14-27	100358	Spacer — Engaging Link	1	15	908032-6	Bolt $\frac{3}{8}$ -16 x $\frac{1}{2}$ Nylon	2
14-28	9490	Spacer	1	16	908033-4	Bolt Hex $\frac{3}{8}$ -16 x 1	2
	908018-4	Bolt, $\frac{3}{8}$ -18 x $\frac{3}{8}$ R.H.	1	17	915663-4	Nut Hex $\frac{3}{8}$ -16 Elastic Stop	4
	908021-4	Bolt, $\frac{3}{8}$ -18 x $1\frac{1}{2}$ L.H.	1	18	920039-4	Washer $\frac{3}{8}$ 155	5
	915112-6	Nut, $\frac{3}{8}$ -18 Elok	2	19	8971	Housing — Drive Bearing	1
	920006-4	Washer, $\frac{3}{8}$	3	20	102726	Bearing — Integral Shaft $\frac{3}{8}$	1
14-29	9469	Pulley — Mower (P.T.O.)	2	21	935021	Snap Ring	1
	909862-5	Set Screw	1	22	9466	Pulley — Drive — Upper *	1
	100141	Guide — Bolt	1	23	102723	Pulley — Drive — Upper *	1
14-30	915112-6	Nut, $\frac{3}{8}$ -18 Elok	1	24	9468	Pulley — Drive — Lower **	1
	920808-4	Washer, $\frac{3}{8}$	1	25	102744	Pulley — Drive — Lower *	1
				26	9978	Key # 9 Woodruff	2
				27	900063-4	Set Screw Square $\frac{3}{8}$ -18 x $\frac{3}{8}$	1
				28	6719	Bracket	1
				29	908037-4	Bolt $\frac{3}{8}$ -16 x 1	2
				30	932962-4	Pulley — Idler	1
				31	8246	Bolt Hex $\frac{3}{8}$ -16 x $1\frac{1}{2}$	1
				32	9629	Pin — Clevis $\frac{3}{8}$ x $\frac{1}{2}$ (Top)	4
				33		Guide — Belt	1
				34	100285	Roller Arm	2
				35	920011-4	Roller Assy. (100284 Bushings)	2
				36	908019-4	Washer — Plain $\frac{1}{2}$ SAE	2
				37	915662-4	Bolt $\frac{3}{8}$ -18 x 1	2
				38	101443	Nut $\frac{3}{8}$ -18 Elastic Stop	2
				39	920010-4	Rod — Link	1
				40	933154	Spring	1
				41	933505-4	Washer — Plain $\frac{3}{8}$	2
				42	101441	Roll P $\frac{1}{8}$ x $\frac{1}{8}$	2
				43	102610	Hairpin	5
				44	932961-4	Bearing — $\frac{1}{2}$ I.D.	2
				45	100055	Link — Lift	4
				46	932008-4	Pin — Clevis $\frac{3}{8}$ x $\frac{3}{4}$	4
				47	8975	Link — Lift	4
				48	8976	Pin — Drive $\frac{3}{8}$ x $\frac{3}{4}$	4
				49	4570	Cotter Pin $\frac{3}{8}$ x $\frac{3}{4}$	4
				50	920009-4	Belt-Main Drive	1
				51	102650	Belt-Blade Drive	1
				52	910864-4	Decal — Caution	1
				53	915112-6	Washer — Plain $\frac{3}{8}$	8
				54	103155	Extension — Chute *	1
				55	102985	Bolt $\frac{3}{8}$ -18 x $\frac{5}{8}$ *	3
				56	5951	Nut $\frac{3}{8}$ -18 Elok *	3
						Decal Warn ing	1
						Decal Opel	1
						Washer "O"	2
15.000 SEAT, DECALS, MISC. TRIM (PLATE 15.1)							
15-01	8951	Cushion — Seat (one piece) 7 HP	1				
	101813	Cushion — Seat 8 HP	1				
	101812	Pad — Cushion 8 HP	1				
	101811	Support — Back Pad 8 HP	1				
	9665	Knob 8 HP	1				
	908063-6	Bolt, $\frac{1}{2}$ — 20 x $\frac{3}{4}$ Nylok 8 HP	1				
	918827-4	Screw $\frac{1}{2}$ x 20 x $\frac{5}{8}$	1				
	920007-4	Washer $\frac{1}{4}$	2				
	920031-4	Lockwasher $\frac{1}{4}$	1				
15-20	8956	Decal — Hood — R.H.	1				
	9777	Decal — Hood — L.H.	1				
15-21	103063	Decal — Ranger 700	2				
	9780	Decal — Electric	2				
15-22	100432	Decal — Hood Reer — R.H. (Lift)	1				
	102346	Decal — Height Indicator (Lift)	1				
15-21	8138	Decal — Ranger 800	2				
	102844	Decal — Rear	1				
15-32	102844	Decal — Read Op. Mon.	1				
15-33	102843	Decal — Caution	1				
15-34	9781	Decal — Hood L.H. (PTO)	1				

MOWING ATTACHMENT



LAWN RANGER MOWER
MODELS 5-0200 & 5-0201

Plate 9.1

ENGINE

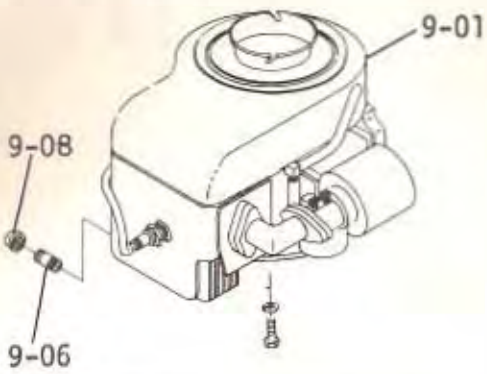


Plate 10.1 FUEL AND EXHAUST SYSTEM

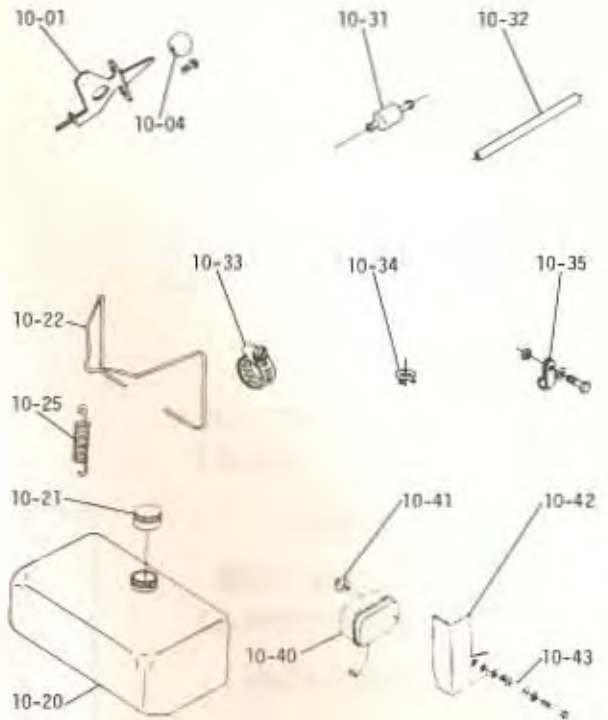


Plate 11.1

ELECTRICAL SYSTEM

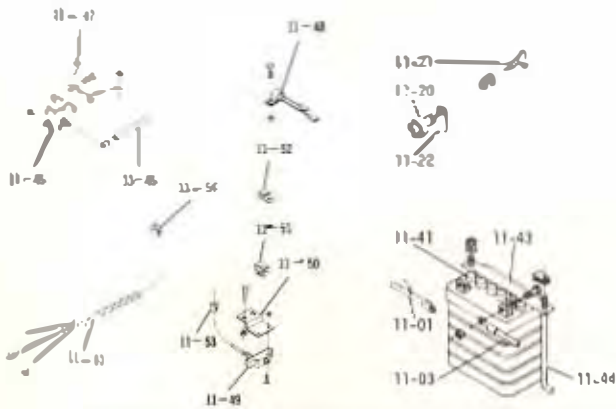


Plate 13.1

WHEELS AND TIRES

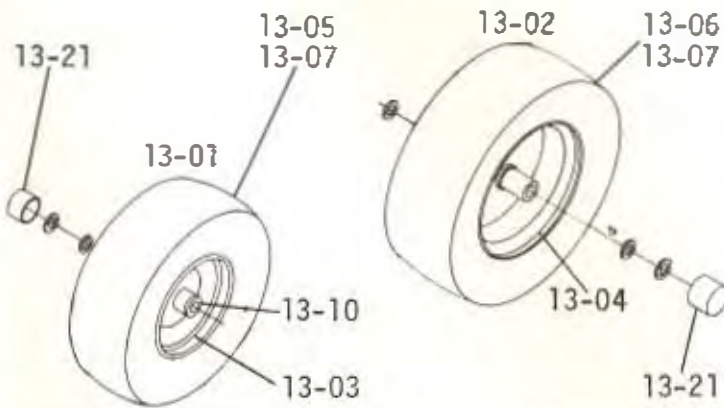


Plate 14.1

DRIVE BELTS, PULLEYS

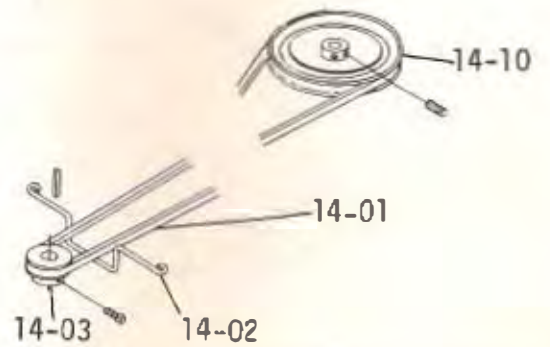


Plate 14.2

P. T. O. CLUTCH

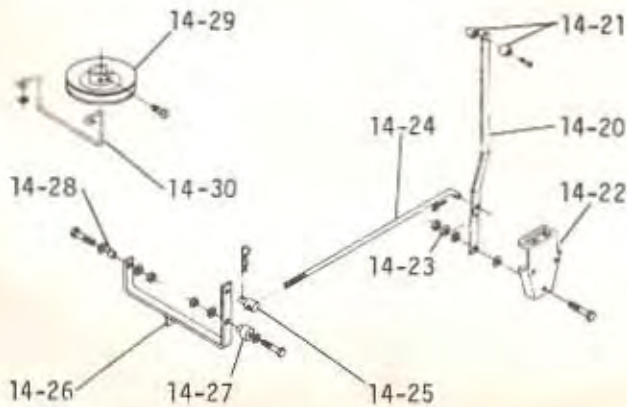


Plate 15.1

SEAT, DECALS, MISC. TRIM





WHEEL-HORSE PRODUCTS, INC.

**515 West Ireland Road
South Bend, Indiana 46614**

WHEEL HORSE SPARE PARTS WARRANTY

Wheel-Horse Products, Inc. guarantees both its new and its rebuilt spare parts as well as its assemblies against manufacturing defects for 90 days from the date of purchase. Any new or rebuilt spare parts or any assembly manufactured by Wheel Horse will be replaced free if found to be defective while in normal usage during the 90 days following the date of purchase. If the spare part or assembly is warranty replacement, our guarantee applies for the duration of the original warranty period or 90 days, whichever is longer.

Drive belts are also guaranteed for 90 days from date of purchase. Batteries and spare parts for engines are guaranteed separately by their manufacturer. This guarantee covers the replacement of defective parts only. All labor, transportation costs and dealer service charges are the responsibility of the owner. All claims must be handled through an authorized Wheel Horse dealer.

Wheel-Horse Products, Inc. reserves the right to change spare part specifications and/or to delete or substitute spare parts at any time without notice and without incurring obligation.