

# Wheel Horse®

LAWN

## Ranger

OWNERS MANUAL

MODELS

1-2631 (Electric)

1-1631 (Recoil)

RIDING

ROTARY MOWER



WHEEL-HORSE PRODUCTS, INC.

SOUTH BEND, IND.

*"Quality is Standard Equipment in Every Wheelhorse Product"*

## ASSEMBLY

A. The entire tractor unit is packaged in one carton and the mower in a separate carton.

B. **OPEN TRACTOR UNIT FIRST.** Remove all parts from carton and place in a convenient arrangement on a clean, level surface.

C. Slide the front wheels on to the spindles, and secure with a washer Part No. 2844 and  $\frac{3}{8}$ -16 x  $\frac{7}{8}$  Nylok Bolt, Part No. 908033-6. Slide hub cap, Part No. 2816 over hub.

D. The rear wheel is placed on the rear axle hub, Part No. 6400, and secured with three,  $\frac{3}{8}$  special bolts, Part No. 6401.

E. Place the steering wheel on steering column shaft and secure with the clevis pin, Part No. 5523, and hairpin cotter, Part No. 933503.

F. Attach the two 6" wheels to the mower housing using shoulder bolt, Part No. 5188. The wheels must be installed with the long part of the hub toward the mower deck. Wheels can be moved up or down to obtain cutting heights of 1 $\frac{3}{4}$ -3". In the raised position mower cuts a full 3 $\frac{1}{2}$ " high.

G. Assemble idler pulley, Part No. 1623, and shield assembly, Part No. 4931, to mower clutch pedal. The leaf spring on the shield assembly must be deflected down so that it fits under the tubular portion of the clutch pedal assembly. The idler bushing, Part No. 1536, must be placed between the idler and shield. **Note!** The belt must be in the idler pulley groove before these parts are assembled. (See Fig. 1.)

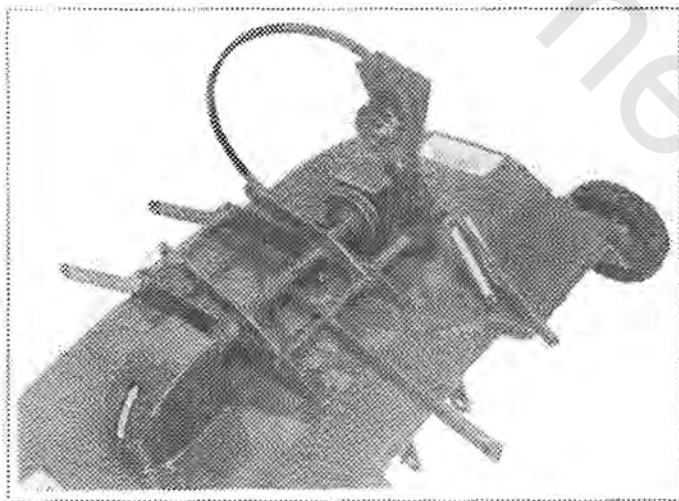


FIGURE 1

H. Slide mower under unit with rear links laying forward and attach the four links using the fourth and sixth holes from the front on each side of the frame: Use  $\frac{3}{8}$  x 1 $\frac{1}{4}$  bolts, Part No. 908035-4, spacers, Part No. 4937, washers, Part No. 920009-4, and elastic nuts, Part No. 915663-4, for attaching links to frame.

I. Move lift lever forward and hook lift to pin in lift arm, securing with washer and hair pin cotter.

J. With mower clutch in disengaged, down position, slide belt over engine pulley and place in **outside** groove. Release mower clutch and check belt alignment. Tightness of belt is automatically adjusted through the tension springs.

K. Adjust position of belt stop, Part No. 4930 (See tractor parts drawing), so that it just clears the outside of the belt when the mower is at maximum and minimum height and with the belt clutch engaged. This insures proper release of mower clutch.

## GEAR CLEARANCE ADJUSTMENT

The proper gear clearance has been pre-set at the factory, and they should not require any adjusting. When replacing a gear or overhauling the unit, the following procedure should be followed for proper clearance:

1. Remove the gear covers.
2. Adjust nut with .020" shim placed between the lock nut and coupling until clearance between face gears and spur gears has been removed. (See Fig. 11.)

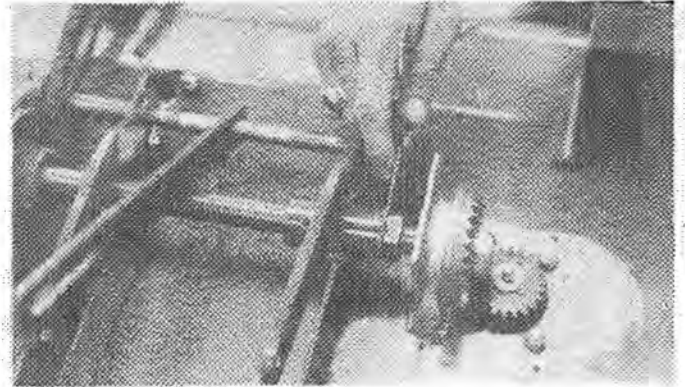


FIGURE 11

3. Remove the .020" shim and provide equal tooth clearance at both sets of gears by tapping on each face gear until the adjusting nut is flush with the coupling. **There should be no clearance between the adjusting nut and coupling.**
4. Check for proper amount of grease and **replace** gear covers. Use American Oil Co. "Super malube" grease.

## BEFORE YOU START

There is **NO OIL** in the crankcase of the engine when shipped from the factory. **OIL . . .** Use a good grade of regular oil (see Engine Manual).

Check oil level every 5 operating hours or each time equipment is used.

Change oil every 25 operating hours or sooner if equipment is operated in extremely dusty or dirty conditions. Read Engine Manual and follow all instructions pertaining to type of lubrication specified. The engine is the heart of your tractor and it is very important that you keep it in good condition.

Before mowing, the mower should be operated at a slow speed to check all moving parts for any damage or looseness caused in transporting.

Lubricate all grease fittings with a regular pressure gun lubricant every eight to ten hours of operation. Refer to Figure 111 for the location of grease fittings.

A light machine oil should be used on all moving parts to keep joints from wearing and squeaking.

Remove oil filler plug, located at the left rear side of the transmission, and fill to level of hole with a good grade of S.A.E. 90 oil (will require about 3 pints).

The transmission should be checked after every hours of use. The transmission should be drained on year by removing plug on bottom to drain oil. Refill as above paragraph. This is a regular automotive type transmission with sliding gears and should have the same care as your car.

## BATTERY

The battery installed in the 1-2631 tractor is a dry charged battery. It is important that you properly prepare this battery to insure good service and long life.

Remove vent caps. Remove or destroy any sealing device which may have been used to close or restrict the vent openings.

2. Fill each cell of the battery to the proper level with the battery electrolyte.

**NOTE: Temperature of battery and electrolyte at time of filling should be above 60°F.** Never fill battery in the vehicle.

3. **BOOST CHARGE:** 15 amps. for 10 minutes or 7 amps. for 30 minutes. Adjust electrolyte level, if necessary, after charge.

4. Install battery with battery posts toward the rear of mower. After battery has been in service, add only approved water.

**DO NOT ADD ACID.**

## TIRES

The front tires are 4.50 x 4" pneumatic and should be filled to 15 pounds of air pressure. The rear tires are 18 x 8.50-8 and should have 6 to 8 lbs. of air pressure.

## STARTING ENGINE

1. Before starting the engine fill gas tank (located in the hood) with a good grade of regular gas, and open valve on gas tank.

2. Place gear shift lever in neutral position.

3. Pull throttle lever  $\frac{1}{2}$  way out and turn to the right to lock it in position. **Note:** The throttle control has a locking device. Turn the throttle control to the left to unlock, adjust to the desired position and turn to the right to lock.

4. Pull choke lever all the way out to choke engine. If engine is warm and has been running, choking may not be necessary.

5. **A.** The Model 1-2631 has a key starter-switch. Turn key all the way to right to start engine.

**B.** The Model 1-1631 has a recoil starter with an off and on switch. To start flip switch to on and pull recoil starter. (**Note: Keep feet clear of mower while pulling recoil starter**)

6. When engine starts push choke in to off position and regulate throttle control by turning to the left to unlock and push in or out to desired speed.

7. Depress clutch pedal on left side of tractor before selecting desired gear range.

8. When starting tractor in winter it is desirable to depress clutch so engine does not have to turn transmission.

## CLUTCHING

Don't force the gear shift lever if the gears do not immediately mesh. Depress clutch pedal all the way down and let up, then depress again and shift. To avoid sudden starts, release clutch pedal slowly. While in motion do not shift gears without depressing clutch pedal.

The clutch pedal also operates the brakes **WHEN DE-PRESSED ALL THE WAY DOWN.** For this reason, you should depress the clutch pedal **ONLY  $\frac{2}{3}$  OF THE WAY DOWN WHEN SHIFTING** while in motion. This clutch-brake pedal combination makes clutching automatic as you apply the brakes to stop.

## PARKING BRAKE

The parking brake is located on the left side of the Lawn Ranger as shown in Figure 1. To set the parking brake depress the clutch-brake pedal as far as possible and push the parking brake down. To release the brake depress the clutch-brake pedal.

## ATTACHING TOOLS

Complete information on the assembly, attachment, operation and service of the attaching tools will be provided with each attachment.

All drawn implements attach in seconds. Simply lift the tractor hitch pin, insert the tongue, and replace pin.

## CARE OF TRACTOR

1. Keep Lawn Ranger greased and oiled regularly. Refer to Figure III for the location of grease fittings. Check transmission and engine case oil levels.

2. Keep engine air cleaner clean. This will add to engine life.

3. Keep tires properly inflated. See previous instructions.

4. Keep Lawn Ranger covered and in a dry place when not in use.

5. Keep grass and dirt out of engine cowling as these will stop the flow of air and decrease engine life.

6. **BRAKE ADJUSTMENT.** The brake band, located on the left side of the transmission, brakes the transmission and in turn stops the wheels.

To adjust, depress clutch brake pedal and move parking brake lever forward into the engaged position. Tighten nut on brake rod until both rear wheels skid when tractor is pushed — parking brake engaged. Tighten nut another  $\frac{1}{2}$  turn. The brake and parking brake are now properly adjusted.

7. **CLUTCH-BRAKE PEDAL ADJUSTMENT.** The clutch-brake pedal rod may be turned in or out to adjust the pedal to operator's desired position. Remove pin from rod and turn rod in or out for adjustment. There are also two holes in the pedal to adjust for travel. The upper hole is for a short movement of travel, the lower hole is for a long movement.

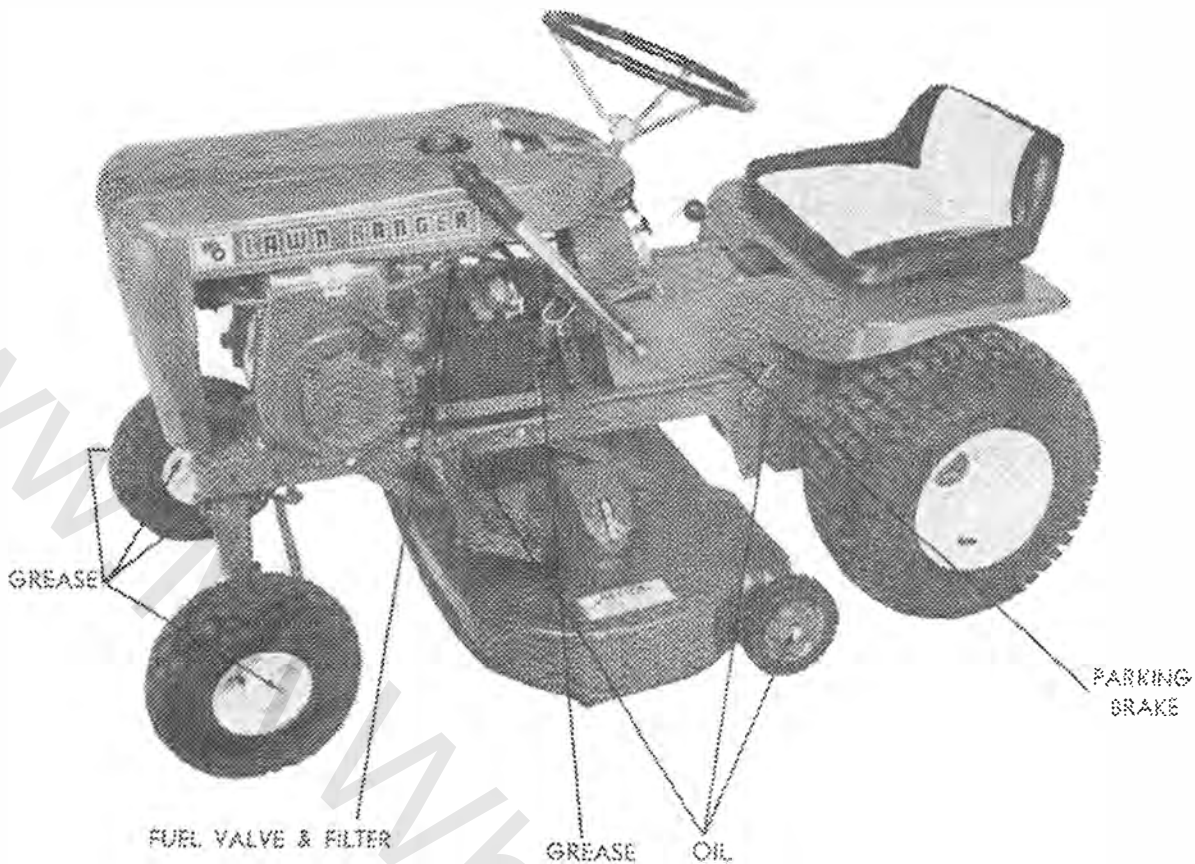
8. When replacing belts or mounting drive implements make sure all pulleys are in line.

9. **BATTERY.** Check electrolyte level periodically if tractor has been in storage for it may be necessary to recharge.

10. Your Lawn Ranger is only as good as the service you give it. See your Wheel Horse Dealer for a thorough check-up after each season of use.

11. When replacing belts be sure to purchase genuine Wheel Horse belts, as these belts are specifically designed for each application.

**(NOTE: Make sure all pulleys are in line.)**



**FIGURE III**

**SAFETY SUGGESTIONS**

Recommended by Outdoor Power Equipment Institute

1. Know the controls and how to stop quickly — read the owners manual.
2. Do not allow children to operate machine; nor adults to operate it without proper instruction.
3. Clear work area of objects which might be picked up and thrown.
4. Disengage all clutches and shift into neutral before starting motor. Keep hands, feet, and clothing away from power driven parts.
5. Do not carry passengers. Keep children and pets a safe distance away.
6. Never direct discharge of any material toward bystanders, nor allow anyone near machine while in operation.
7. Disengage power to attachment (s) and stop motor before leaving operator position.
8. Take precautions when leaving machine unattended (to avoid accidental starting, rolling away, accidental dropping of any attachment, etc.)
9. Disengage power to any attachment whenever it is not in use, or when traveling from one work area to another.
10. Stay alert for holes and other hidden hazards. Know what is behind you, before backing up.
11. Beware of steep slopes; reduce speed on all side slopes and sharp turns, to prevent tipping or losing control.
12. Don't stop or start suddenly when going uphill or downhill.
13. Use care when pulling loads or using heavy equipment.

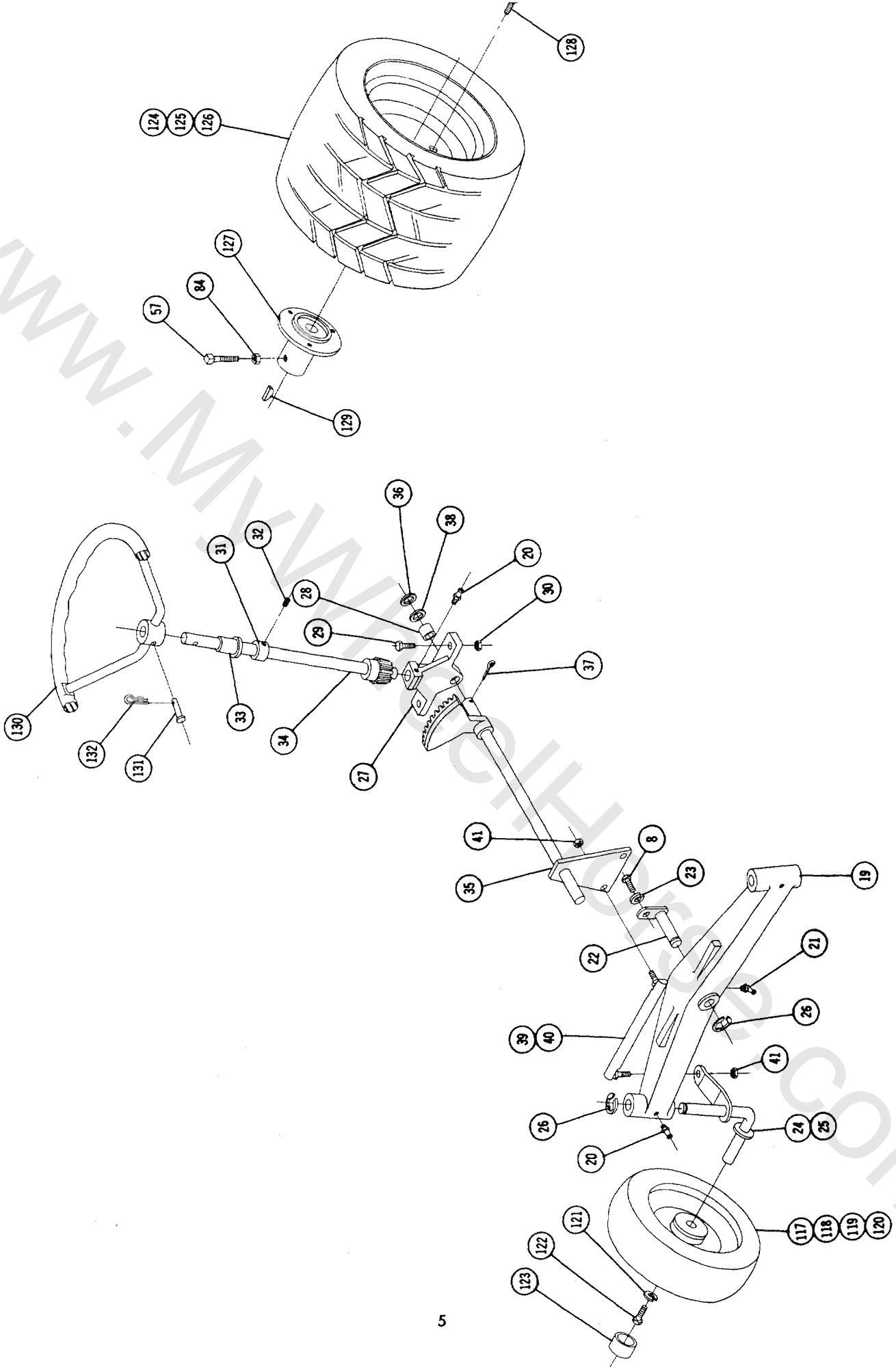
14. Watch out for traffic when near roadways.
15. Handle gasoline with care — it is highly flammable.
  - a. Use approved gasoline container.
  - b. Never add gasoline to a running motor — fill tank out of doors wipe up spilled gasoline.
  - c. Replace gasoline cap securely.
  - d. Open doors if motor is run in garage — exhaust gases are dangerous.
16. Keep machine in good operating condition and keep safety devices in place. Use guards as instructed in owner's manual.

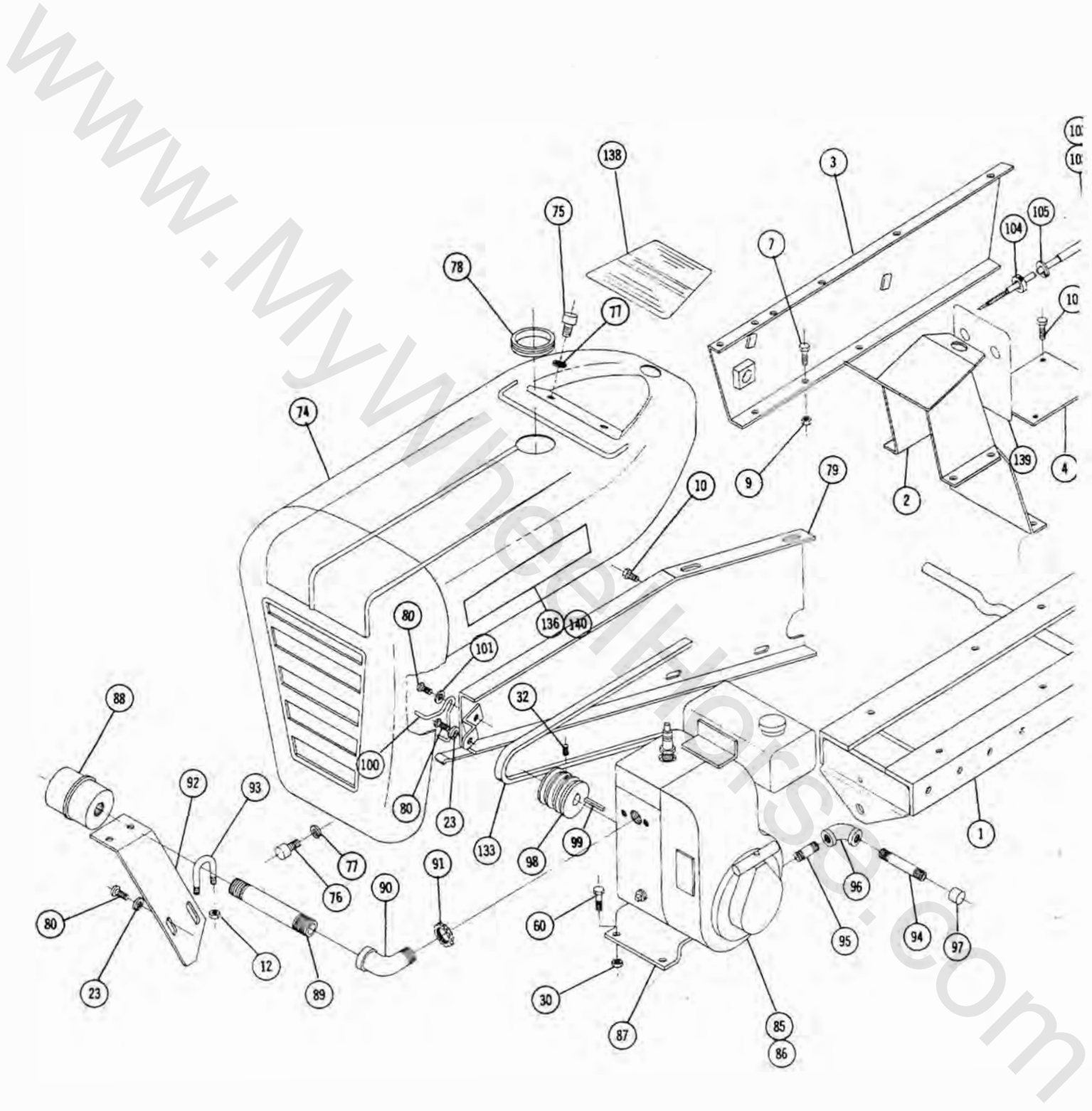
**WHEEL HORSE LAWN RANGER SPECIFICATIONS**

(SPECIFICATIONS SUBJECT TO CHANGE WITHOUT NOTICE)

Speeds	3 forward to 5 MPH 1 reverse to 2¼ MPH
Turning Radius	(to outside of outside wheel 6')
Length Overall	55½ inches
Wheelbase	41¼ inches
Width Overall (with mower)	33½ inches
Width Overall (without mower)	31 inches
Width at Front Wheels	27¾ inches
Height	33½ inches
Height to Top of Hood	28¾ inches
Net Weight (1-2631)	411 lbs.
Net Weight (1-1631)	385 lbs.
Frame Clearance	10¾ inches
Horsepower (Engine Manufacturer's Rating)	6 H.P.
Engine Crankcase Oil Capacity	21 oz.
Fuel Capacity	4 quarts
Tires (front)	4.50 x 4 Pneumatic (11" wheel dia.)
Tires (rear)	8.50-8 Pneumatic (18" wheel dia.)

WWW.MAKELIFE.COM





MAIN FRAME





# 1-2631 & 1-1631 TRACTOR PARTS LIST

When ordering parts always list Port No. and name of part.

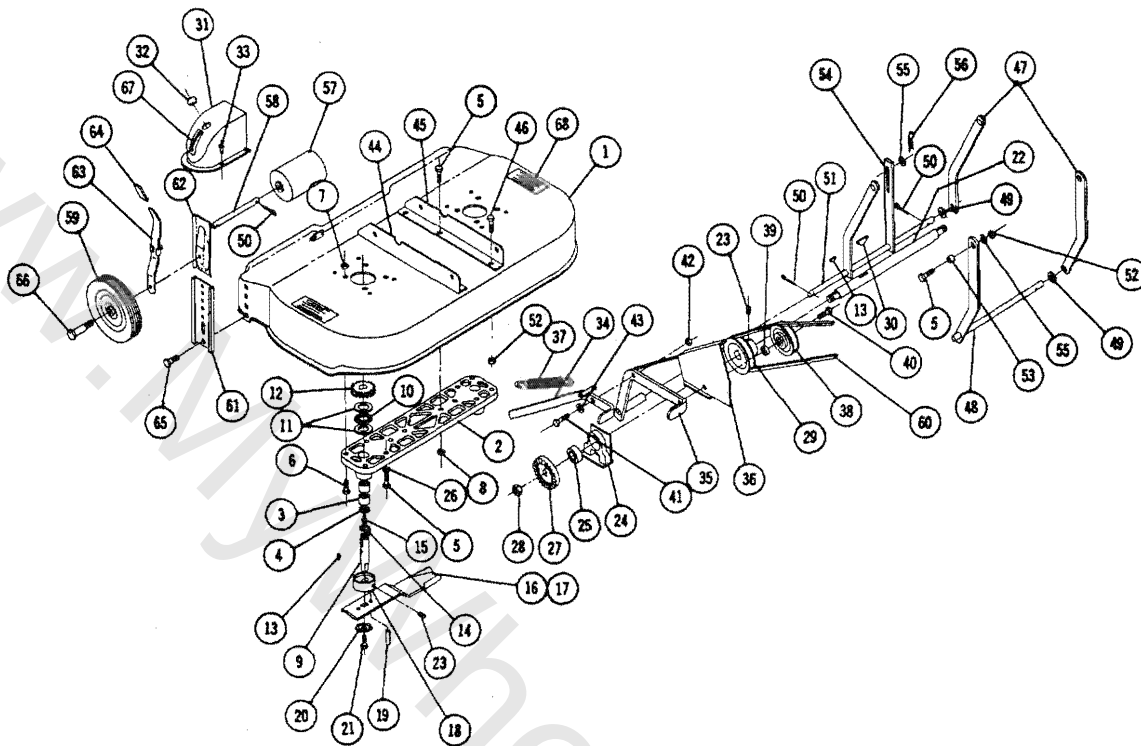
Ref. No.	Part No.	Description	Reqd.		Ref. No.	Part No.	Description	Reqd.	
			Recoil	Elec.				Recoil	Elec.
1	5519	Ass'y. Frame	1	1	72	4904	Hitch	1	1
2	5526	Ass'y. Hoodstand	1	1	73	5553	Tray — Tool	1	1
3	5532	Ass'y. Panel — R.H.	1	1	74	4975	Ass'y. Hood — Complete	1	1
4	5536	Ass'y. Plate — Cover	1	1	75	1345	Thumb Screw 1/4-20 x 3/8	2	2
5	5535	Panel — L.H.	1	1	76	1346	Thumb Screw 1/4-20 x 3/4	1	1
6	5538	Quadrant — Lift	1	1	77	920081-4	Lockwasher 1/4 Dia.	3	3
7	908017-4	Bolt 3/16-18 x 3/4	6	6	78	2767	Grommet 2 1/2 I.D.	1	1
8	908015-4	Bolt 3/16-18 x 1/2	9	9	79	4962	Ass'y. Belt Guard	1	1
9	915112-6	Nut 3/16-18 Nylok	10	12	80	1432	Screw 3/16-24 x 1/2 Round Head	4	4
10	960151-4	Screw 1/4-20 x 1/2 Hex Whizlock	8	8	81	5555	Fender	1	1
11	4953	Ass'y. Battery	0	1	82	7018	Ass'y. Seat Base	1	1
12	915111-6	Nut — Nylok 1/4-20	2	4	83	5556	Cushion	1	1
13	4958	Clamp — Battery	0	1	84	915113-6	Nut — Nylok 3/8-16	4	4
14	1611	Pulley	1	1	85	5531	Ass'y. Engine 6 H.P. Lauson — Electric	0	1
15	937014	Key #9 Woodruff	1	1	86	5530	Ass'y. Engine 6 H.P. Lauson — Recoil	1	0
16	909849-5	Set Screw 1/4-20 x 3/16 Nylok	1	1	87	4416	Base — Engine	1	1
17	908032-4	Bolt 3/8-16 x 3/4 Hex	4	4	88	1739	Muffler	1	1
18	920083-4	Lockwasher 3/8 Dia.	6	6	89	1754	Nipple 3/4 Pipe x 5 1/2	1	1
19	5540	Axle Front	1	1	90	1755	Elbow 3/4 Pipe x 90° Street	1	1
20	1030	Fitting Grease	3	3	91	1318	Nut — 3/4 Pipe Lock	1	1
21	1481	Fitting 45° Grease	1	1	92	5646	Brace — Exhaust	1	1
22	6216	Ass'y. — Pin & Plate	1	1	93	1240	"U" Clamp	1	1
23	920082-4	Lockwasher 3/8 Dia.	4	4	94	943317-4	Nipple 1/4 Pipe x 4	1	1
24	5542	Ass'y. Spindle R.H.	1	1	95	4218	Nipple 1/4 Pipe x 1 1/4	1	1
25	5543	Ass'y. Spindle L.H.	1	1	96	4216	Elbow — 1/4 Pipe x 90°	1	1
26	5618	"E" Ring 3/4 Dia. Shaft	3	3	97	4217	Cap 1/4 Pipe	1	1
27	6396	Support — Steering	1	1	98	1621	Pulley — Engine	1	1
28	6397	Bushing — Steering	1	1	99	1349	Key 1/4 x 1/4 x 1 1/2	1	1
29	908035-4	Bolt 3/8-16 x 1 1/4 Hex	2	2	100	4930	Stop — Belt	1	1
30	915663-4	Nut 3/8-16 Hex Elastic Stop	9	9	101	920008-4	Washer 3/8	1	1
31	1085	Collar	1	1	102	5560	Ass'y. Control — Choke	1	1
32	909848-5	Set Screw 1/4-20 x 1/4 Nylok	2	2	103	5561	Ass'y. Control — Throttle	1	1
33	5409	Bushing — Nylon	1	1	104	915088-4	Nut 3/16-18 Hex Jam	2	2
34	6563	Ass'y. Shaft — Upper Steering	1	1	105	920127-4	Lockwasher 3/8 External Tooth	2	2
35	6565	Ass'y. Shaft — Lower Steering	1	1	106	7572	Ass'y. Switch — Ignition	0	1
36	1278	Washer — Shim (.050)	1	1	107	7261	Nut 3/8-32 Special Hex	0	1
37	932035-4	Cotter Pin 3/16 x 1 1/4	1	1	108	920159-4	Lockwasher 5/8 Dia. Special	0	1
38	5210	Washer — Shim (.015)	1	1	109	7262	Key — Ignition	0	1
39	1772	Ass'y. Ball Joint — R.H.	1	1	110	3279	Ass'y. Switch — Ignition Cut-Off	1	0
40	1773	Ass'y. Ball Joint — L.H.	1	1	111	4856	Button .500	0	1
41	915002-6	Nut 3/8-24 Nylok	4	4	112	3757	Button .625	1	0
42	3950	Ass'y. Arm & Shaft — Idler	1	1	113	3653	Battery	0	1
43	4899	Arm — Clutch Rod Pivot	1	1	114	4434	Wire — Switch To Ground	1	0
44	933158	Roll Pin 1/8 x 1 1/4	1	1	115	4979	Harness — Wiring	0	1
45	1623	Pulley — Idler	1	1	116	908002-4	Bolt 1/4-20 x 5/8 Hex	0	2
46	1536	Bushing	1	1	117	5610	Ass'y. Wheel, Tire, & Tube	2	2
47	1363	Bolt 3/8-16 x 3/8 Hex — Special	1	1	118	3081	Wheel — Front	2	2
48	2593	Rod — Clutch	1	1	119	5611	Tire	2	2
49	3935	Rod — Brake	1	1	120	5612	Tube	2	2
50	1861	Stud — Clutch Rod	1	1	121	2844	Washer — Hub	2	2
51	932017-4	Cotter Pin 1/8 x 1	2	2	122	908033-6	Bolt 3/8-16 x 3/8 Nylok	2	2
52	1014	Spring	1	1	123	2816	Hub Cap	2	2
53	5544	Ass'y. Lock — Brake	1	1	124	7064	Ass'y. Wheel & Tire — Rear	2	2
54	2267	Pedal — Clutch	1	1	125	5567	Wheel — Rear	2	2
55	933504-4	Hairpin Cotter	1	1	126	7063	Tire	2	2
56	4421	Foot Rest	2	2	127	6400	Hub	2	2
57	909554	Set Screw 3/8-16 x 1 Square Head	4	4	128	6401	Bolt Wheel	6	6
58	915113-4	Nut 3/8-16 Hex	2	2	129	937022	Key #15 Woodruff	2	2
59	5546	Ass'y. Shaft — Lift	1	1	130	7367	Wheel Steering	1	1
60	908034-4	Bolt — Hex 3/8-16 x 1	8	8	131	5523	Pin — Clevis	1	1
61	5550	Lever — Lift	1	1	132	933503-4	Hairpin Cotter	1	1
62	5551	Plunger — Lift Lever	1	1	133	1576	"V" Belt	1	1
63	3624	Spring	1	1	134	1813	Tool Pin	1	1
64	3578	Guide — Rod	1	1	135	5604	Decal — Fender	1	1
65	3680	Cap	1	1	136	7630	Decal — Lawn Ranger R.H.	1	1
66	6542	Grip — Handle	1	1	137	915662-4	3/8-18 Elastic Stop Nut	4	4
67	5552	Guide — Plunger	1	1	138	4984	Decal — Hood Panel	1	1
68	908020-4	Bolt — Hex 3/8-18 x 1 1/4	2	2	139	5578	Decal — Instrument Panel	1	1
69	920009-4	Washer 3/8 Dia.	3	3	140	7631	Decal — Lawn Ranger L.H.	1	1
70	932016-4	Cotter Pin 1/8 x 3/4	2	2					
71	932036-4	Cotter Pin 3/16 x 1 1/2	1	1					



# SUPPLEMENTAL SHEET

## FOR LAWN RANGER MODEL 1-2631 AND 1-1631 RIDING ROTARY MOWER

THIS SHEET REPLACES THE PARTS LIST SHOWN ON PAGE 9 OF THE OWNERS MANUAL



### MODEL 5-3322 32" MOWER (LAWN RANGER) PARTS LIST

When ordering parts always list Part No. and name of part.

Item No.	Part No.	Description	No. Req'd.	Item No.	Part No.	Description	No. Req'd.
1	5605	Ass'y. Deck	1	35	4927	Ass'y. Clutch Pedal	1
2	7589	Housing	1	36	4931	Ass'y. Shield	1
3	1508	Bearing	4	37	1486	Spring — Clutch	2
4	1303	Seal	2	38	1623	Pulley — Idler	1
5	908035-4	Bolt Hex $\frac{3}{8}$ -16 x $1\frac{1}{4}$	10	39	1536	Bushing Idler	1
6	908019-4	Bolt Hex $\frac{3}{8}$ -18 x 1	4	40	908033-4	Bolt Hex $\frac{3}{8}$ -16 x $\frac{7}{8}$	1
7	915112-6	Nut Nylok $\frac{3}{8}$ -18	4	41	908005-4	Bolt Hex $\frac{1}{4}$ -20 x 1	1
8	915113-6	Nut $\frac{3}{8}$ -16	2	42	915111-6	Nut Nylok $\frac{1}{4}$ -20	1
9	7895	Shaft Spindle	2	43	920007-4	Washer $\frac{1}{4}$ SAE	2
10	1534	Bearing — Thrust	2	44	5242	Bracket — Mtg. R.H.	1
11	7894	Washer — Thrust	4	45	5243	Bracket — Mtg. L.H.	1
12	3131	Gear — Spur	2	46	908032-4	Bolt Hex $\frac{3}{8}$ -16 x $\frac{3}{4}$	4
13	937084	Key #5 Woodruff	4	47	7746	Link Mower Hanger	4
14	936125	Snap Ring $\frac{3}{4}$ Shaft	2	48	4938	Rod — Front Link Pivot	1
15	1030	Fitting Grease	2	49	920011-4	Washer $\frac{1}{2}$ Dia.	5
16	7908	Blade R.H. 16"	1	50	932017-5	Cotter Pin $\frac{1}{8}$ x 1	7
17	7909	Blade L.H. 16"	1	51	4936	Rod — Rear Link Pivot	1
18	3716	Cup	2	52	915663-4	Nut $\frac{3}{8}$ -16 Elastic Stop	8
19	933211	Roll Pin $\frac{1}{4}$ x $\frac{3}{4}$	4	53	4937	Spacer	4
20	1336	Washer Dome	2	54	6325	Bar — Lift	1
21	908033-5	Bolt $\frac{3}{8}$ -16 x $\frac{7}{8}$ Nylok	2	55	920009-4	Washer $\frac{3}{8}$ SAE	5
22	5234	Cross Shaft	1	56	933504-4	Hairpin	1
23	909862-5	Set Screw $\frac{3}{16}$ -18 x $\frac{5}{16}$	3	57	5240	Ass'y. Roller	1
24	7590	Housing	2	58	5241	Shaft	1
25	1515	Bearing	2	59	2877	Wheel	2
26	920083-4	Lockwasher $\frac{3}{8}$ Dia.	4	60	1555	"V" Belt	1
27	7898	Gear	2	61	7856	Plate	2
28	915639-4	Nut $\frac{3}{8}$ -18 Elastic Stop	2	62	7857	Slide	2
29	1613	Pulley	1	63	7858	Lever	2
30	937159	Key #9 Hi-Pro	1	64	7859	Cap	2
31	3141	Cover — Gear	2	65	7860	Bolt — Special	4
32	3757	Plug Button	2	66	7853	Bolt — Shoulder	2
33	1304	Screw #8-18 x $\frac{1}{4}$ Self-Tap	8	67	3710	Decal — Grease	2
34	4924	Ass'y. Latch Clutch Pedal	1	68	4570	Decal — Caution	2

## Additional Mower Instructions

### GEAR CLEARANCE ADJUSTMENT

Ignore the gear clearance adjustment instructions shown on page 2 of the owners manual.

### ASSEMBLY

Section F, Page 2, should read as follows:

Attach the mower wheel, lever, and shoulder bolt to the slide plate as shown on the exploded view drawing. The wheels must be installed with the long part of the hub toward the mower deck. The wheels can be moved up or down to obtain cutting heights of 1¼" to 3". In the raised position the mower cuts a full 3½" high.

### MOWER HEIGHT ADJUSTMENT

Different cutting heights can be obtained by pulling the heights adjusting lever and moving it up or down to the desired notch. (See Figure 1.) **Note:** The mower must be in the "up" position before any adjustment can be made.

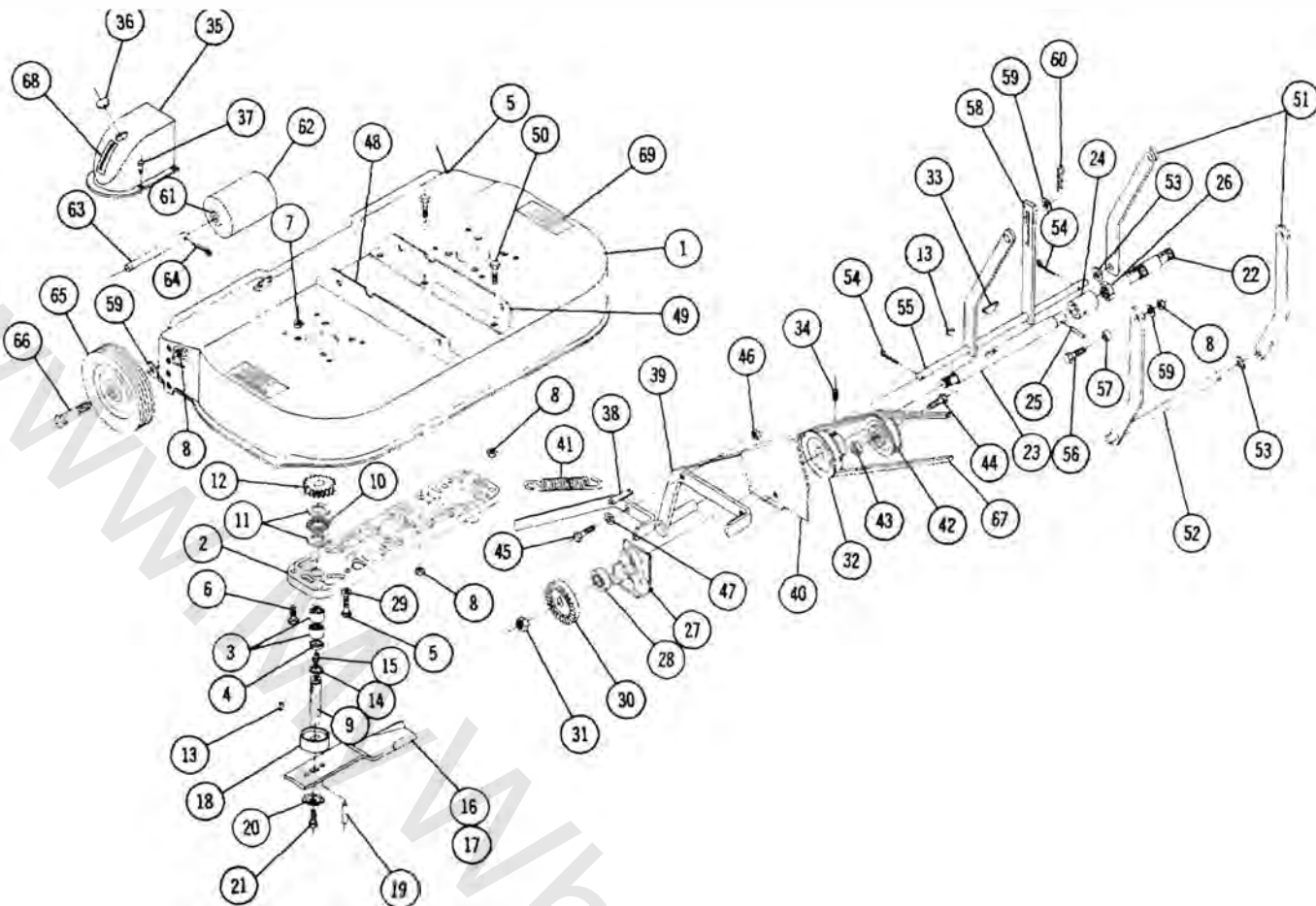


Figure 1

### MOWER REMOVAL

To remove the mower from the tractor proceed as follows:

1. Disengage mower lift arm.
2. Loosen mower belt, remove belt, and wire belt guide.
3. Remove the ¾" bolts, spacers, washers, and nuts holding the mower hanger arms.
4. Pull the mower from under the tractor.

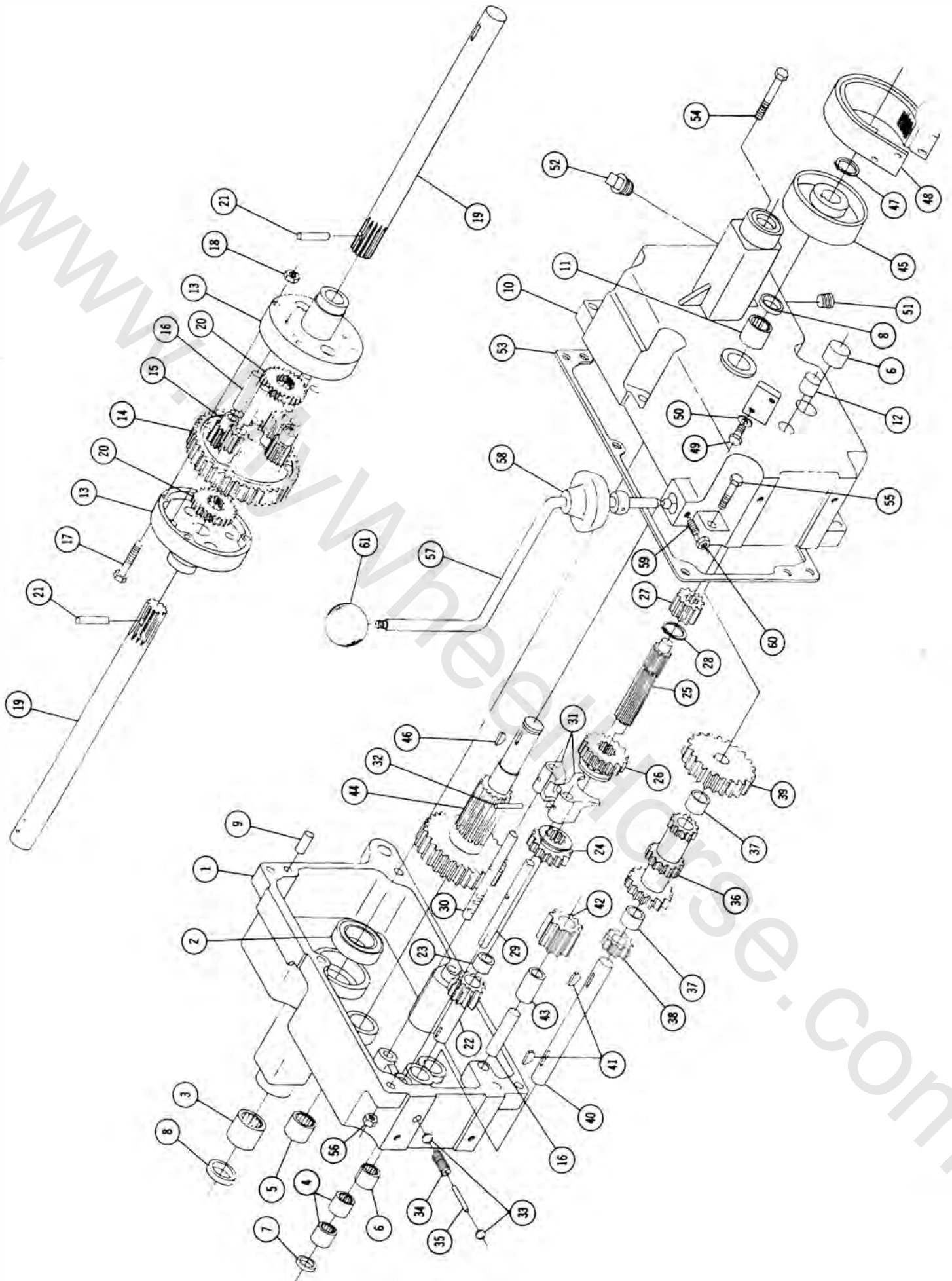


## MODEL 5-3321 32" MOWER (Lawn Ranger)

### Parts List

When ordering parts always list Part No. and name of part.

Ref. No.	Part No.	Description	No. Req'd.	Ref. No.	Part No.	Description	No. Req'd.
1	5605	Ass'y. Deck	1	36	3757	Plug Button	2
2	7589	Housing	1	37	1304	Screw Hex #8-18 x 1/4 Self Tap	8
3	1508	Bearing	4	38	4924	Ass'y. Latch - Clutch Pedal	1
4	1303	Seal	2	39	4927	Ass'y. Clutch Pedal	1
5	908034-4	Bolt Hex 3/8-16 x 1	2	40	4931	Ass'y. Shield	1
6	908017-4	Bolt Hex 5/16-18 x 3/4	4	41	1486	Spring - Clutch	2
7	915112-6	Nut Nylok 3/16-18	4	42	1623	Pulley - Idler	1
8	915663-4	Nut 3/8-16 Elastic Stop	12	43	1536	Bushing - Idler	1
9	3724	Shaft Spindle	2	44	908033-4	Bolt Hex 3/8-16 x 3/8	1
10	1534	Bearing Thrust	2	45	908005	Bolt Hex 1/4-20 x 1	1
11	1535	Washer - Thrust	4	46	915111-6	Nut Nylok 1/4-20	1
12	3131	Gear - Spur	2	47	920007-4	Washer 1/4 S.A.E.	2
13	937084	Key #5 Woodruff	4	48	5242	Bracket Mtg. R.H.	1
14	936125	Snap Ring 3/4 Shaft	2	49	5243	Bracket Mtg. L.H.	1
15	1030	Fitting Grease	2	50	908032-4	Bolt Hex 3/8-16 x 3/4	4
16	3718	Blade R.H. 16"	1	51	7746	Link Mower Hanger	4
17	3719	Blade L.H. 16"	1	52	4938	Rod Front Link Pivot	1
18	3716	Cup	2	53	920011-4	Washer 1/2 Dia. S.A.E.	5
19	933211	Roll Pin 1/4 x 3/4	4	54	932017-4	Cotter Pin 1/8 x 1	5
20	1336	Washer - Dome	2	55	4936	Rod Rear Link Pivot	1
21	908033-5	Bolt - Nylok 3/8-16 x 3/8	2	56	908035-4	Bolt Hex 3/8-16 x 1 1/4	4
22	7586	Cross Shaft - Stub	1	57	4937	Spacer	4
23	7585	Cross Shaft - Long	1	58	6325	Bar Lift	1
24	7587	Coupling	1	59	920009-4	Washer 3/8 S.A.E.	7
25	933190	Roll Pin 3/16 x 1 1/4	1	60	933504-4	Hairpin Cotter	1
26	7588	Nut Hex Jam - Nylok	1	61	1974	Bushing - Nylon	2
27	7590	Housing	2	62	5240	Ass'y. Roller - with Bushings	1
28	1515	Bearing	2	63	5241	Shaft	1
29	920083-4	Lockwasher 3/8 Dia.	4	64	932017-4	Cotter Pin 1/8 x 1	2
30	3130	Gear	2	65	2877	Wheel	2
31	915639	Nut 5/8-18 Elastic Stop	2	66	5188	Bolt - Shoulder	2
32	1613	Pulley	1	67	1555	"V" Belt	1
33	937159	Key #9 HI-PRO	1	68	3710	Decal - Grease	2
34	909862-5	Set Screw 3/16-18 x 3/16 Nylok	1	69	4570	Decal - Caution	2
35	3141	Cover - Gear	2				



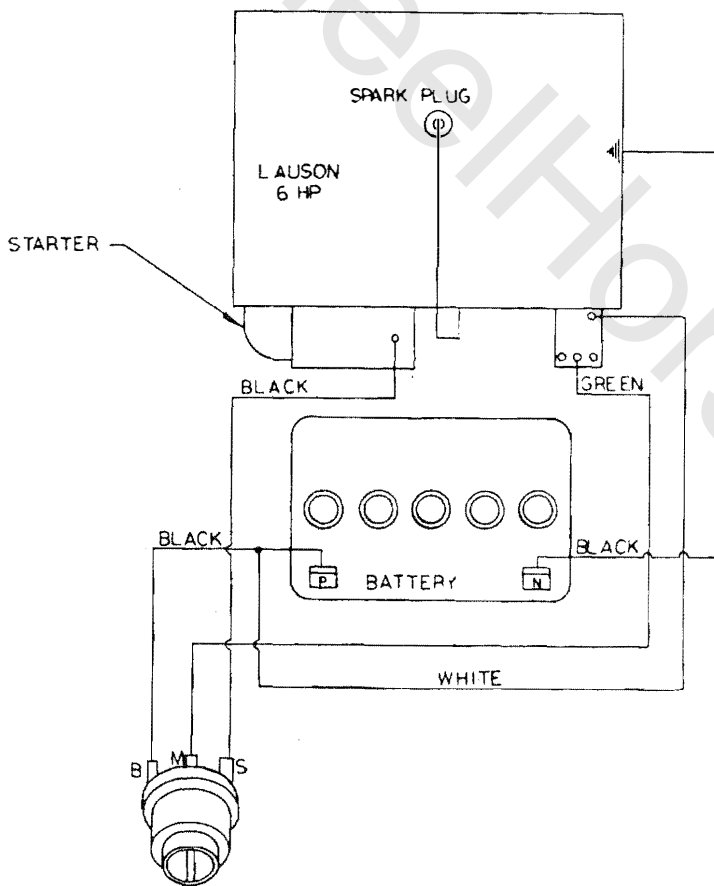
# 5053 TRANSMISSION PARTS LIST

\*(Order No. 5053 For Complete Transmission)

When ordering parts always list Part No. and Name of Part.

Ref. No.	Part No.	Description	No. Req'd.	Ref. No.	Part No.	Description	No. Req'd.
1	3900	Case — R.H.	1	32	933156	Roll Pin 1/8 x 1	2
2	1533	Ball Bearing 1 1/2 I.D.	2	33	3517	Ball — Shift Stop	2
3	1528	Bearing — Needle	2	34	3518	Spring — Shift Stop	1
4	1508	Bearing — Needle 3/4 I.D.	2	35	5614	Pin — Shift Stop	1
5	1532	Bearing — Needle 1" I.D.	1	36	3525	Gear — Cluster	1
6	1529	Bearing — Needle 3/4 I.D.	2	37	1504	Bearing — Bronze 3/4 I.D.	2
7	1303	Seal — Oil 3/4 Shaft	1	38	3528	Gear — Reduction Pinion	1
8	1232	Seal — Oil 1" Shaft	3	39	3527	Gear — Reduction	1
9	3915	Pin — Dowel	2	40	3910	Shaft — Cluster Gear	1
10	3901	Case — L.H.	1	41	937014	Key #9 Woodruff	2
11	1530	Bearing — Needle 1" I.D.	1	42	4204	Gear — Reverse Idler	1
12	1531	Bearing — Needle 5/8 I.D.	1	43	1516	Bushing — Bronze 1/2 I.D.	1
13	3905	Case — Differential	2	44	3903	Gear — Brake Shaft	1
14	3906	Gear — Differential Bull	1	45	3902	Drum — Brake	1
15	4235	Gear — Differential Pinion	4	46	937022	Key #15 Woodruff	1
16	3909	Shaft	5	47	936131	Snap Ring 1" Shaft	1
17	908146	Bolt Hex 5/16-18 x 3/4	4	48	7376	Ass'y. Brake Band & Lining	1
18	1316	Nut Huglock 5/16-18	4	49	908002-4	Bolt Hex 1/4-20 x 5/8	2
19	3904	Axle — Rear	2	50	920081-4	Lockwasher 1/4 Dia.	2
20	3908	Gear — Axle	2	51	943460	Plug 1/4 Pipe	1
21	933217	Roll Pin 1/4 x 1 1/2	2	52	943420	Plug 3/8 Pipe	1
22	3522	Gear — Input	1	53	3912	Gasket	1
23	1518	Bearing — Needle 5/8 I.D.	1	54	908043-4	Bolt Hex 3/8-16 x 3 1/2	1
24	3523	Gear Hi & 2nd	1	55	908038-4	Bolt Hex 3/8-16 x 2	5
25	3907	Shaft Spline	1	56	915113-6	Nut Hex 3/8-16 Nylok	6
26	3524	Gear — Low & Reverse	1	57	5279	Ass'y. Shift Stick	1
27	3526	Gear — Pinion — Splined	1	58	3577	Boot — Shift Stick	1
28	936125	Snap Ring 3/4 Truarc	1	59	1239	Set Screw Dog Point 1/4-20 x 3/4	1
29	5615	Rail — Front Shift	1	60	915111-6	Nut Hex 1/4-20 Nylok	1
30	5616	Rail — Rear Shift	1	61	1001	Knob	1
31	3503	Fork — Shift	2				

\*Not included in 5053 Assembly.



IGNITION-STARTER SWITCH

WIRING DIAGRAM FOR 1-2631

**ATTACHMENTS AVAILABLE FOR**  
**Models 1-1631 & 1-2631**

32" LAWN ROLLER (7-2311)  
32" SNOW THROWER (6-3211)  
38" DOZER BLADE (6-3111)  
4 WHEEL UTILITY WAGON (7-2111)  
2 WHEEL DUMP TRAILER (7-2211)  
SPIKED DISC AERATOR (7-2411)  
SPIKED TOOTH HARROW (7-1611)

**OPTIONAL ACCESSORIES**

TIRE CHAINS (8-2411)  
FRONT AND REAR WHEEL DISCS (8-0521)  
HEADLIGHT SET (HL-5) — FOR MODEL 1-2631 ONLY

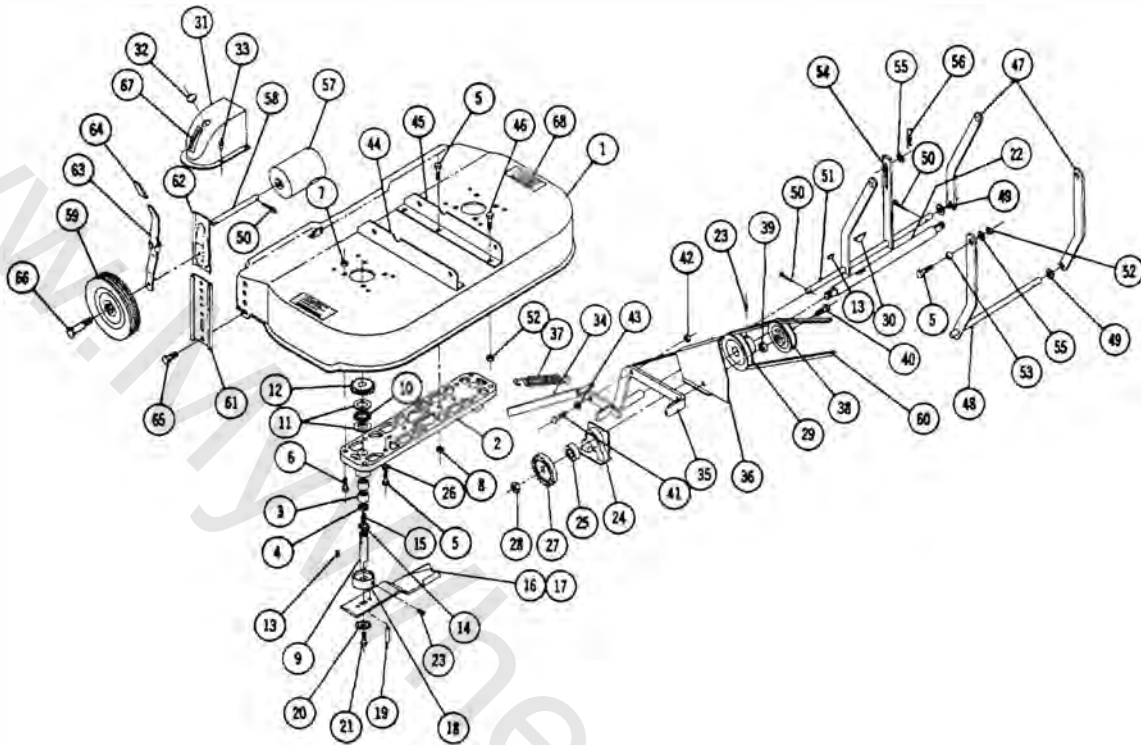




# SUPPLEMENTAL SHEET

## FOR LAWN RANGER MODEL 1-2631 AND 1-1631 RIDING ROTARY MOWER

THIS SHEET REPLACES THE PARTS LIST SHOWN ON PAGE 9 OF THE OWNERS MANUAL



### MODEL 5-3322 32" MOWER (LAWN RANGER) PARTS LIST

When ordering parts always list Part No. and name of part.

Item No.	Part No.	Description	No. Req'd.	Item No.	Part No.	Description	No. Req'd.
1	5605	Ass'y. Deck	1	35	4927	Ass'y. Clutch Pedal	1
2	7589	Housing	1	36	4931	Ass'y. Shield	1
3	1508	Bearing	4	37	1486	Spring — Clutch	2
4	1303	Seal	2	38	1623	Pulley — Idler	1
5	908035-4	Bolt Hex $\frac{3}{8}$ -16 x $1\frac{1}{4}$	10	39	1536	Bushing Idler	1
6	908019-4	Bolt Hex $\frac{1}{2}$ -18 x 1	4	40	908033-4	Bolt Hex $\frac{3}{8}$ -16 x $\frac{7}{8}$	1
7	915112-6	Nut Nyllok $\frac{3}{16}$ -18	4	41	908005-4	Bolt Hex $\frac{1}{4}$ -20 x 1	1
8	915113-6	Nut $\frac{3}{8}$ -16	2	42	915111-6	Nut Nyllok $\frac{1}{4}$ -20	1
9	7895	Shaft Spindle	2	43	920007-4	Washer $\frac{1}{4}$ SAE	2
10	1534	Bearing — Thrust	2	44	5242	Bracket — Mtg. R.H.	1
11	7894	Washer — Thrust	4	45	5243	Bracket — Mtg. L.H.	1
12	3131	Gear — Spur	2	46	908032-4	Bolt Hex $\frac{3}{8}$ -16 x $\frac{3}{4}$	4
13	937084	Key #5 Woodruff	4	47	7746	Link Mower Hanger	4
14	936125	Snap Ring $\frac{3}{4}$ Shaft	2	48	4938	Rod — Front Link Pivot	1
15	1030	Fitting Grease	2	49	920011-4	Washer $\frac{1}{2}$ Dia.	5
16	7908	Blade R.H. 16"	1	50	932017-5	Cotter Pin $\frac{1}{8}$ x 1	7
17	7909	Blade L.H. 16"	1	51	4936	Rod — Rear Link Pivot	1
18	3716	Cup	2	52	915663-4	Nut $\frac{3}{8}$ -16 Elastic Stop	8
19	933211	Roll Pin $\frac{1}{4}$ x $\frac{3}{4}$	4	53	4937	Spacer	4
20	1336	Washer Dome	2	54	6325	Bar — Lift	1
21	908033-5	Bolt $\frac{3}{8}$ -16 x $\frac{7}{8}$ Nyllok	2	55	920009-4	Washer $\frac{3}{8}$ SAE	5
22	5234	Cross Shaft	1	56	933504-4	Hairpin	1
23	909862-5	Set Screw $\frac{5}{16}$ -18 x $\frac{5}{16}$	3	57	5240	Ass'y. Roller	1
24	7590	Housing	2	58	5241	Shaft	1
25	1515	Bearing	2	59	2877	Wheel	2
26	920083-4	Lockwasher $\frac{3}{8}$ Dia.	4	60	1555	"V" Belt	1
27	7898	Gear	2	61	7856	Plate	2
28	915639-4	Nut $\frac{5}{8}$ -18 Elastic Stop	2	62	7857	Slide	2
29	1613	Pulley	1	63	7858	Lever	2
30	937159	Key #9 Hi-Pro	1	64	7859	Cap	2
31	3141	Cover — Gear	2	65	7860	Bolt — Special	4
32	3757	Plug Button	2	66	7853	Bolt — Shoulder	2
33	1304	Screw #8-18 x $\frac{1}{4}$ Self-Tap	8	67	3710	Decal — Grease	2
34	4924	Ass'y. Latch Clutch Pedal	1	68	4570	Decal — Caution	2