

Wheel Horse®

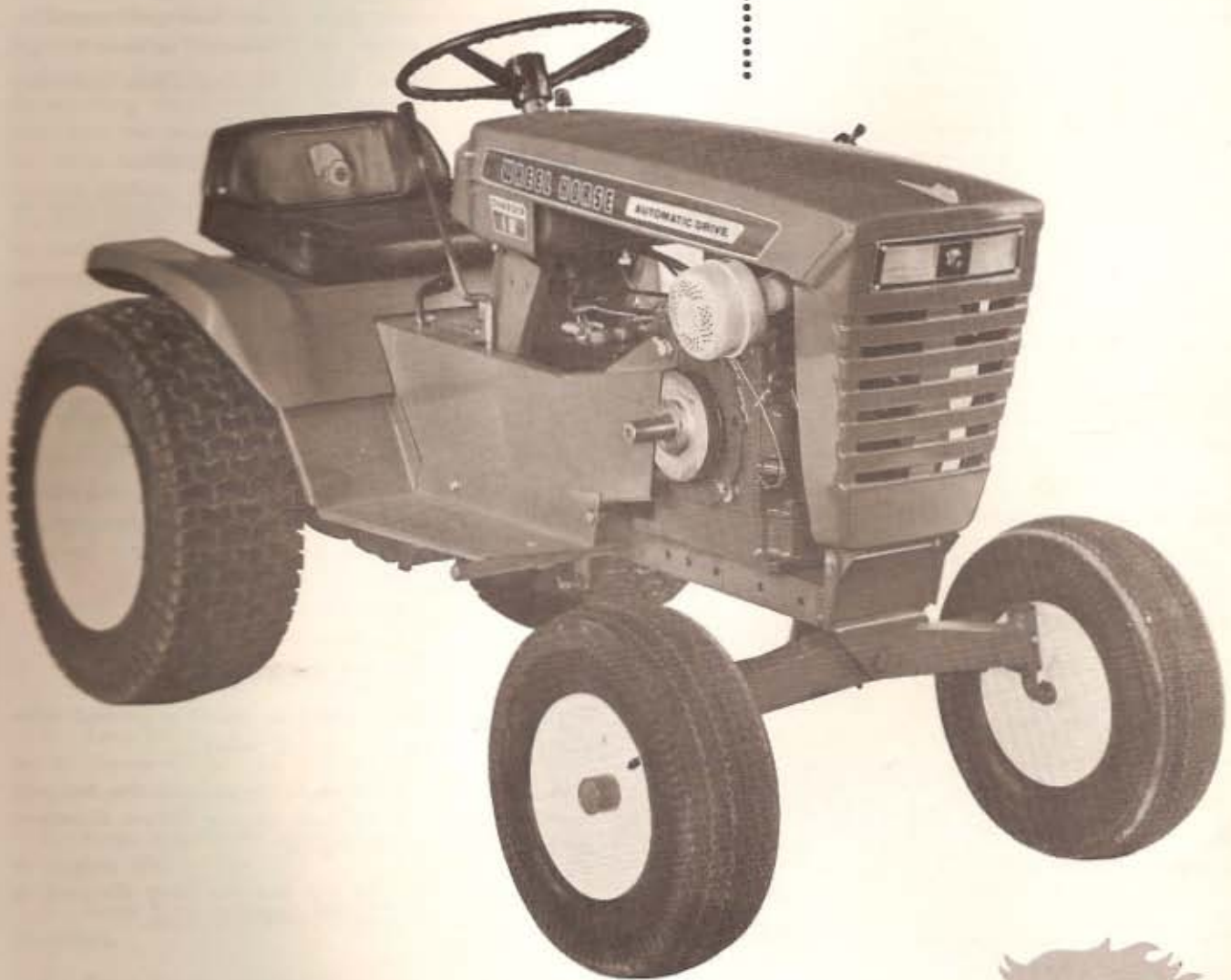
LAWN AND GARDEN TRACTORS

OWNERS MANUAL

CHARGER 12

MODEL

1-7231



WHEEL-HORSE PRODUCTS, INC.

SOUTH BEND, IND.

"Quality is Standard Equipment in Every Wheelhorse Product"

ASSEMBLY

A. The tractor is shipped in one carton with the rear wheel and tire assemblies, Part No. 5432, in a separate carton.

B. Mount rear wheels to hubs using the ten lug bolts, Part No. 1004.

C. Mount front wheels to spindles using the $\frac{3}{8}$ -16 x $\frac{7}{8}$ Nylok bolts, Part No. 908033-6 and washers, Part No. 2844. There are two shim washers, one .015 thick and one .050 thick, in the loose part package for each wheel. Use one or both as shown on the exploded view drawing to provide a close fit. Press on hub caps.

D. To mount the steering wheel slip the collar, Part No. 7468, on the steering shaft, insert the Woodruff Key, Part No. 937014, mount the steering wheel, and secure with the $\frac{1}{4}$ x $1\frac{1}{4}$ roll pin, Part No. 933215.

BATTERY

The battery installed in the tractor is a dry charged battery. It is important that you properly prepare this battery to insure good service and long life.

1. Remove vent caps. Remove or destroy any sealing device which may have been used to close or restrict the vent openings.

2. Fill each cell of the battery to the proper level with the battery electrode.

NOTE: Temperature of battery and electrolyte at time of filling should be above 60°F. Never fill battery in the vehicle.

3. **BOOST CHARGE:** 15 amps. for 10 minutes or 7 amps. for 30 minutes. Adjust electrolyte level, if necessary, after charge.

4. Install battery with battery posts toward the rear of tractor. Start engine. After battery has been in service, add only approved water.

DO NOT ADD ACID.

TIRES

The front tires are 16 x 5.50-8 and should be inflated to 12 pounds of air pressure. The rear tires are 8.50 x 12 and should have 6 to 8 pounds of air pressure. The tires can also be filled with ballast if desired. Ordinarily this is not necessary as the weight of the operator will add sufficient weight for adequate traction.

BEFORE YOU START

There is **NO OIL** in the crankcase of the engine when shipped from the factory. **OIL . . .** See Engine Manual.

Wheel-a-Matic Transmission: The transmission has been filled with Automatic Transmission fluid at the factory. (This is type "A" automatic transmission fluid, which is used in automobiles and may be purchased at any service station.)

A. Remove Plug from transmission fill pipe, (located under seat) and insert dipstick, Part No. 6155. (See Fig. 1). Now check level of transmission fluid to make sure transmission is filled to proper level.

B. To enable moving the tractor by hand you must open the towing valve. (See Towing Instructions.)

Lubricate all grease fittings with a regular pressure gun lubricant every eight to ten hours of operation. Refer to Figure IV for the location of grease fittings.

A light machine oil should be used where indicated.

OPERATING INSTRUCTIONS

The speed, direction and braking are controlled by the control handle located on the right side.

- To go Forward push the control handle Forward.
- To go Backward pull the control handle Back.
- To Stop put control handle in Neutral position.
- You may also Stop the tractor at anytime by depressing the foot pedal on the left side.

The tractor speed is affected instantly by the movement of the control handle. For safest operation the control handle should not be moved too rapidly, especially on grades.

TOWING INSTRUCTIONS

This tractor should never be towed or pushed without first opening the towing valve.

A. The towing valve is located on the top surface of the pump. To push or tow follow directions on towing decal. (See Fig. 1)

B. **CAUTION:** Do not tow for long distance or over a speed of seven (7) miles per hour.

STARTING ENGINE

1. Before starting the engine fill gas tank (located under the hood) with a good grade of regular gas, and open valve on gas tank.

2. The tractor has a key starter-switch. Turn key all the way to right to start engine.

3. Pull throttle lever $\frac{1}{2}$ way out and turn to the right to lock it in position. **Note:** The throttle control has a locking device. Turn the throttle control to the left to unlock, adjust to the desired position and turn to the right to lock.

4. Pull choke lever all the way out to choke engine. If engine is warm and has been running, choking may not be necessary.

5. When engine starts push choke in to off position and regulate throttle control by turning to the left to unlock and push in or out to desired speed.

6. When starting tractor in cold weather set the park brake. This releases the drive belt, and the engine does not have to turn the transmission.

PARKING BRAKE

The parking brake is located on the right side of the tractor. (See Figure IV.) To set the parking brake pull on the handle. Brake should always be set when dismounting from tractor, especially on a grade, otherwise the tractor may creep. When brake is set the drive belt is automatically released. **Caution: Do not set parking brake while tractor is in motion as this may cause damage to the transmission.** Always depress foot pedal (on left side) before releasing parking brake.

TRANSMISSION CARE

Change oil filter after first ten hours. Change all oil and filter every year or 100 hours of operation. The transmission oil capacity is approximately four (4) quarts.

- Use only type "A" automatic transmission oil.
- Check oil periodically and maintain at proper level as indicated on dipstick.

CARE OF TRACTOR

1. Keep tractor greased and oiled regularly. Refer to Figure IV for the location of grease fittings. Check transmission and engine case oil levels.

2. Keep engine air cleaner clean. This will add to engine life.

3. Keep tires properly inflated. See previous instructions.

4. Keep tractor covered and in a dry place when not in use.

5. Keep grass and dirt out of engine cowling as these will stop the flow of air and decrease engine life.

6. Keep grass and dirt off transmission for good transmission cooling.

7. Battery — Check electrolyte level periodically.

NOTE: If tractor has been in storage it may be necessary to recharge battery.

8. Control Handle Friction Adjustment:

The control lever is friction loaded so it will hold at any desired speed. The tension has been adjusted at the factory and should need little or no attention. If the handle does not stay where it is set during operation, the friction may be increased by releasing the locknut and tightening the collar-friction adjustment. (See Figure III.) The proper amount of friction is obtained when approximately five pounds of force at the handle grip moves the control lever. Be sure to tighten the locknut after proper tension has been reached. The friction collar is self lubricating and does not require lubrication.

9. Neutral Adjustment:

A. If tractor should creep while in neutral position this can be corrected. To check for creep place tractor on level surface with engine running, and depress foot pedal. Creep on slopes is normal and cannot be entirely eliminated.

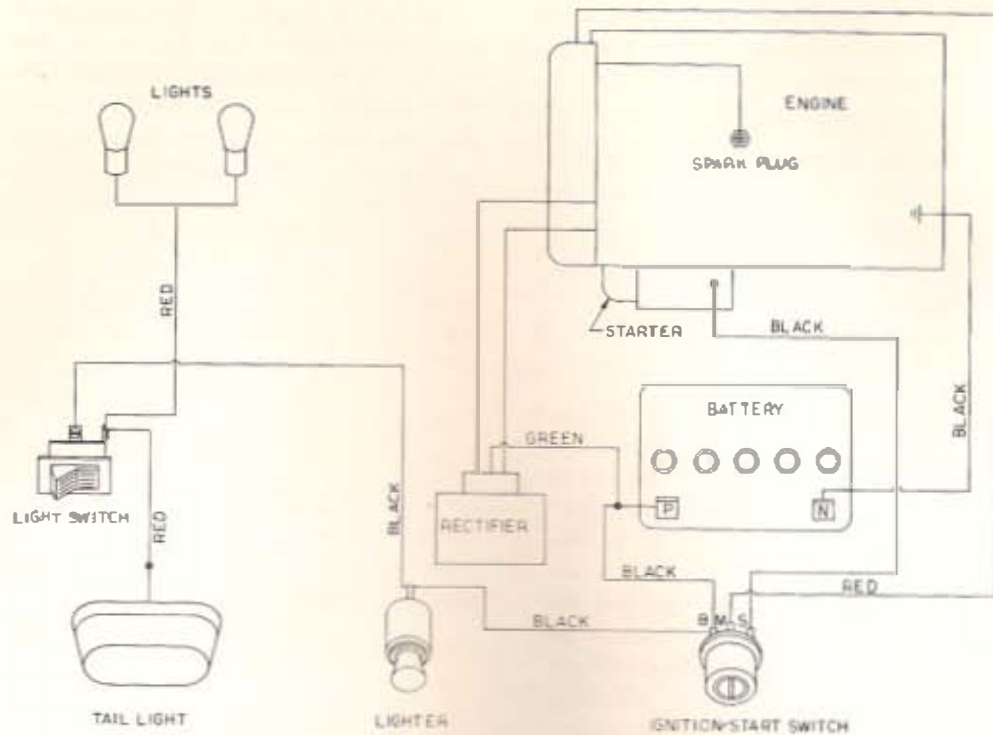
B. To make neutral adjustment (See Figure II).

1. Block rear wheels off ground.
2. Remove instruction plate, (located in front of the seat) by removing the four screws which hold it.
3. Loosen set screw in arm with allen wrench (See Figure II).
4. Depress foot pedal on left side.
5. With tractor engine running and park brake disengaged, insert short screwdriver through hole in nylon cam and rotate the eccentric cam pin until rear wheels stop. Now retighten set screw in arm and replace plate.
6. **NOTE:** The lobe on the eccentric pin must be upward for proper operation.
7. When replacing belts be sure to purchase genuine Wheel Horse Belts, as these belts are specifically designed for each application. **NOTE:** Make sure all pulleys are in line.
8. Your tractor is only as good as the service you give it. See your Wheel Horse Dealer for a thorough check-up after each season of use.

ATTACHING TOOLS

Complete information on the assembly, attachment, operation and service of the many attaching tools will be provided with each attachment.

All drawn implements attach in seconds. Simply lift the tractor hitch pin, insert the tongue, and replace pin.



WIRING DIAGRAM

SAFETY SUGGESTIONS

Recommended by Outdoor Power Equipment Institute

1. Know the controls and how to stop quickly — read the owners manual.
2. Do not allow children to operate machine; nor adults to operate it without proper instruction.
3. Clear work area of objects which might be picked up and thrown.
4. Disengage all clutches and shift into neutral before starting motor. Keep hands, feet, and clothing away from power driven parts.
5. Do not carry passengers. Keep children and pets a safe distance away.
6. Never direct discharge of any material toward bystanders, nor allow anyone near machine while in operation.
7. Disengage power to attachment (s) and stop motor before leaving operator position.
8. Take precautions when leaving machine unattended (to avoid accidental starting, rolling away, accidental dropping of any attachment, etc.)
9. Disengage power to any attachment whenever it is not in use, or when traveling from one work area to another.
10. Stay alert for holes and other hidden hazards. Know what is behind you, before backing up.
11. Beware of steep slopes; reduce speed on all side slopes and sharp turns, to prevent tipping or losing control.
12. Don't stop or start suddenly when going uphill or downhill.
13. Use care when pulling loads or using heavy equipment.
14. Watch out for traffic when near roadways.

15. Handle gasoline with care — it is highly flammable.

- a. Use approved gasoline container.
- b. Never add gasoline to a running motor — fill tank out of doors wipe up spilled gasoline.
- c. Replace gasoline cap securely.
- d. Open doors if motor is run in garage — exhaust gases are dangerous.

17. Keep machine in good operating condition and keep safety devices in place. Use guards as instructed in owner's manual.

SPECIFICATIONS

(Specifications subject to change without notice.)

Length Overall	65 inches
Wheelbase	45½ inches
Width Overall	36 inches
Width of Front Wheels	33 inches
Height	40 inches
Height to Top of Hood	35 inches
Approx. Shipping Weight	650 lbs.
Crop Clearance	7½ inches
Frame Clearance	13 inches
Engine	12 H.P.*
Engine Oil Capacity	5 pints
Fuel Capacity	6 quarts
Tires (front) 5.50-8 Pneumatic (16" wheel dia.)	
Tires (rear) Terra-Type 8.50 x 12" Pneumatic (23" wheel dia.)	
Speeds — Infinitely Variable Forward — 0 to 7 M.P.H.	
Reverse — 0 to 3½ M.P.H.	
Turning Radius (to outside of outside wheel)	6' 9"
* Engine Manufacturers Rating	

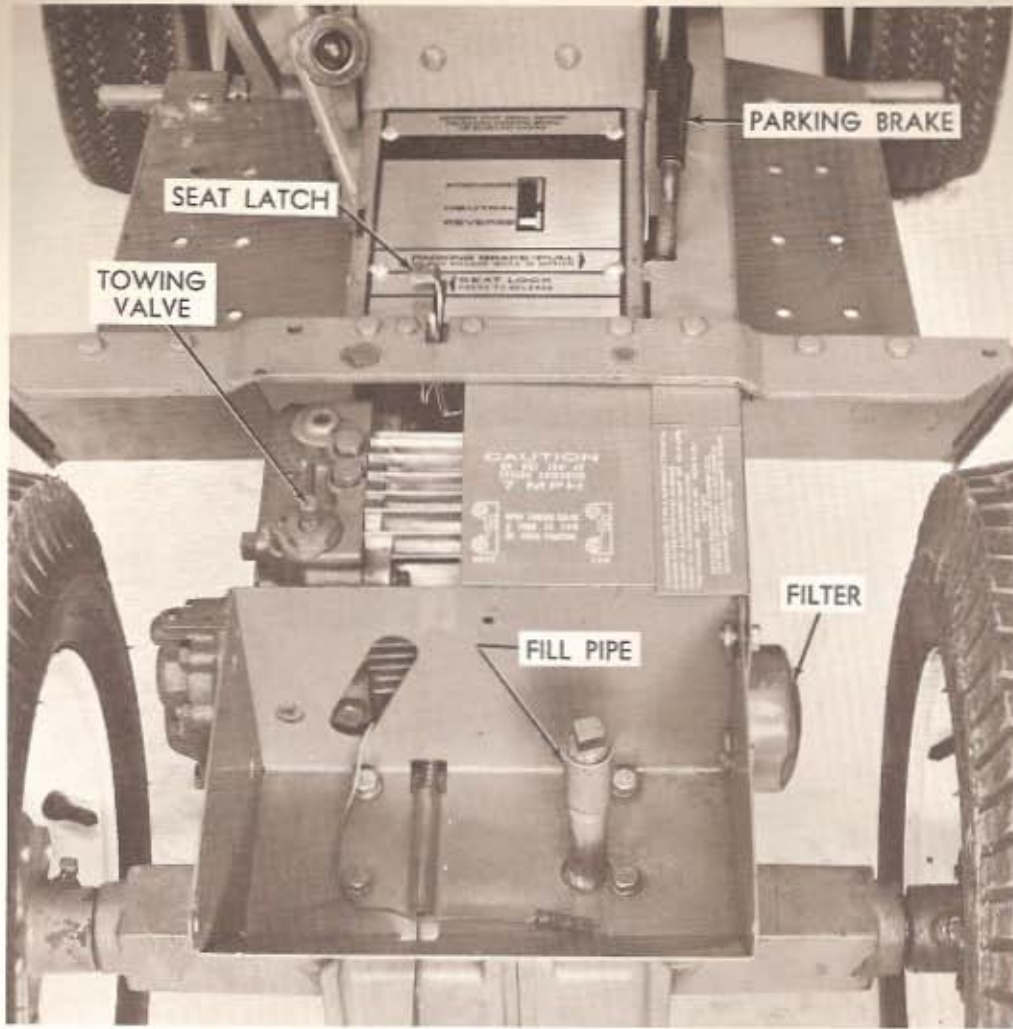


FIG. I

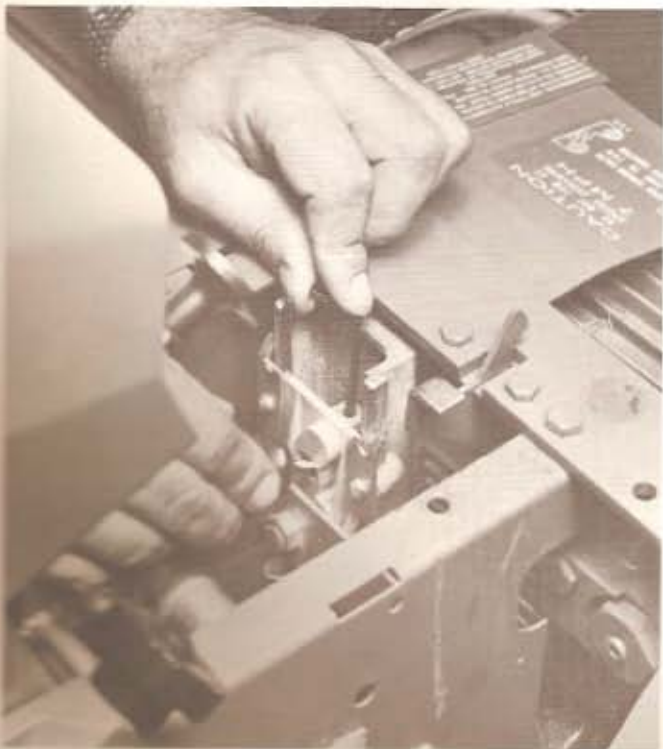


FIG. II

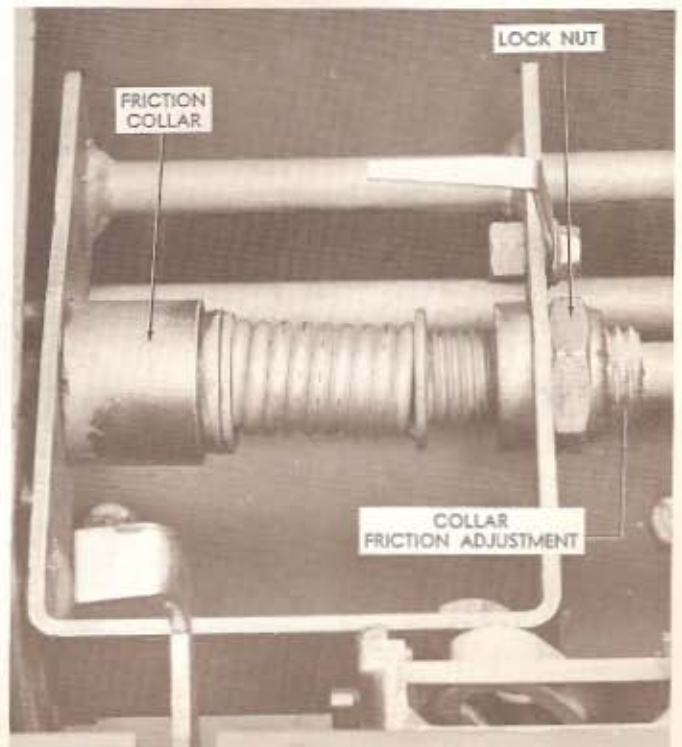


FIG. III

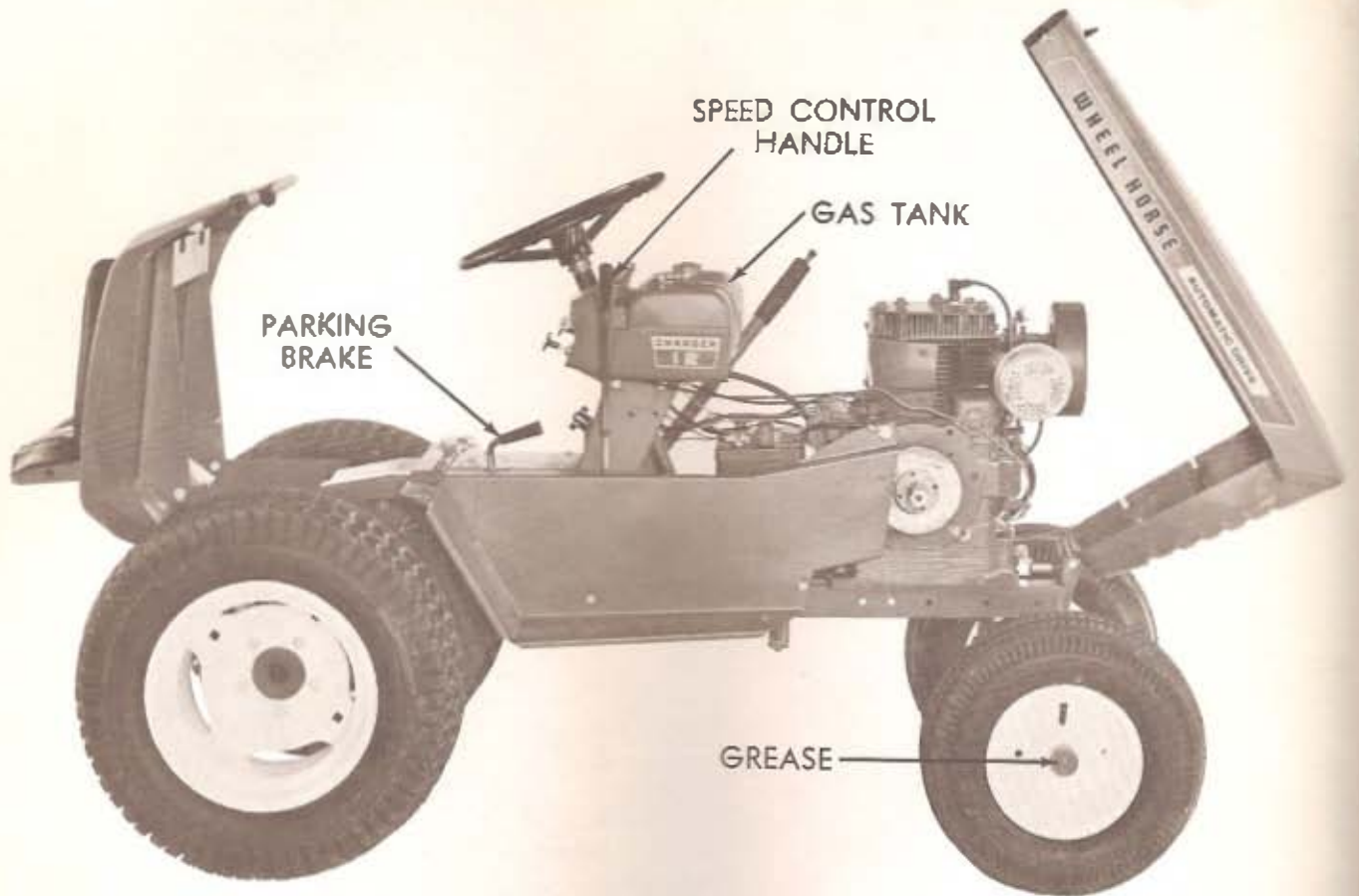
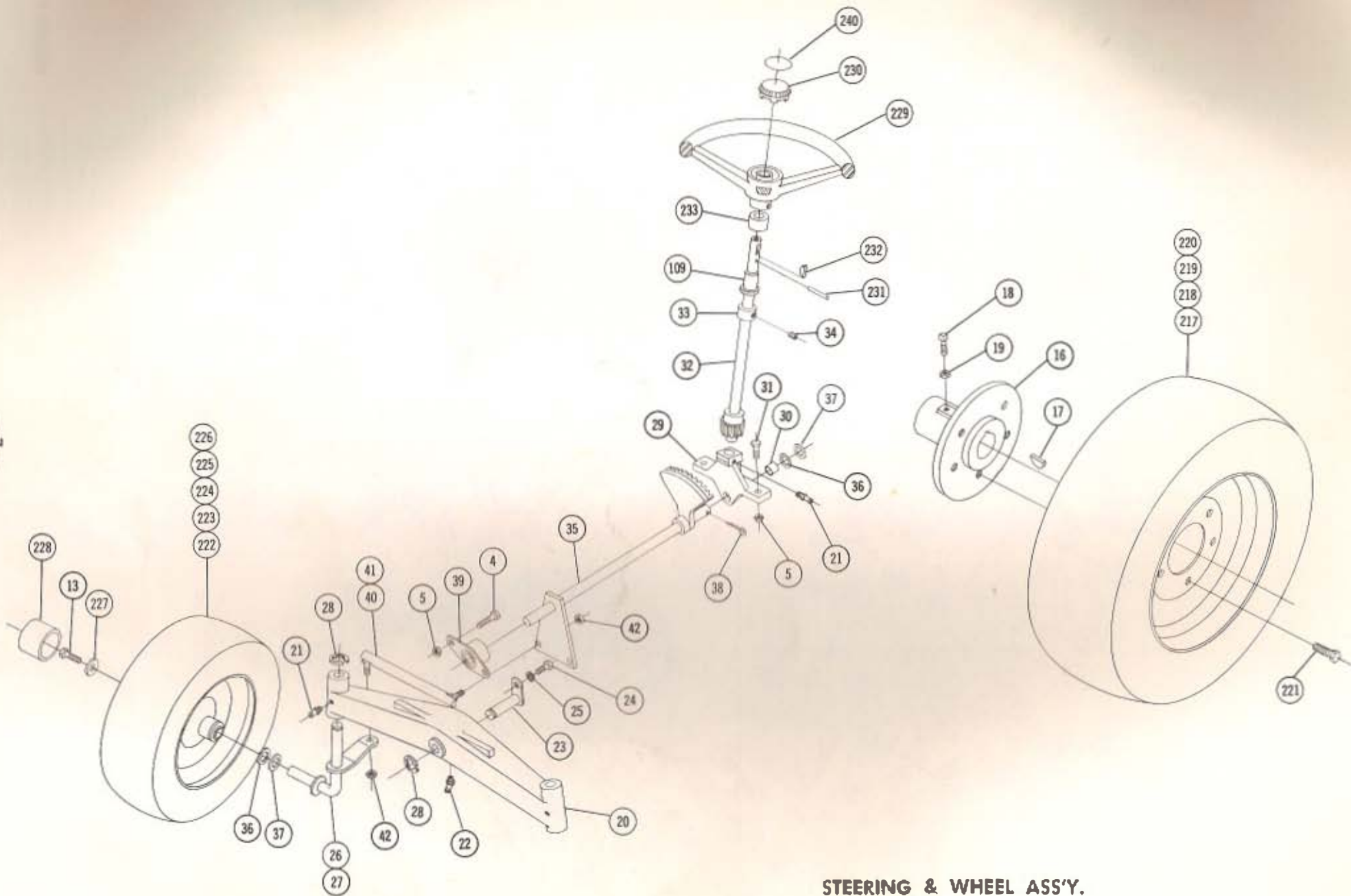
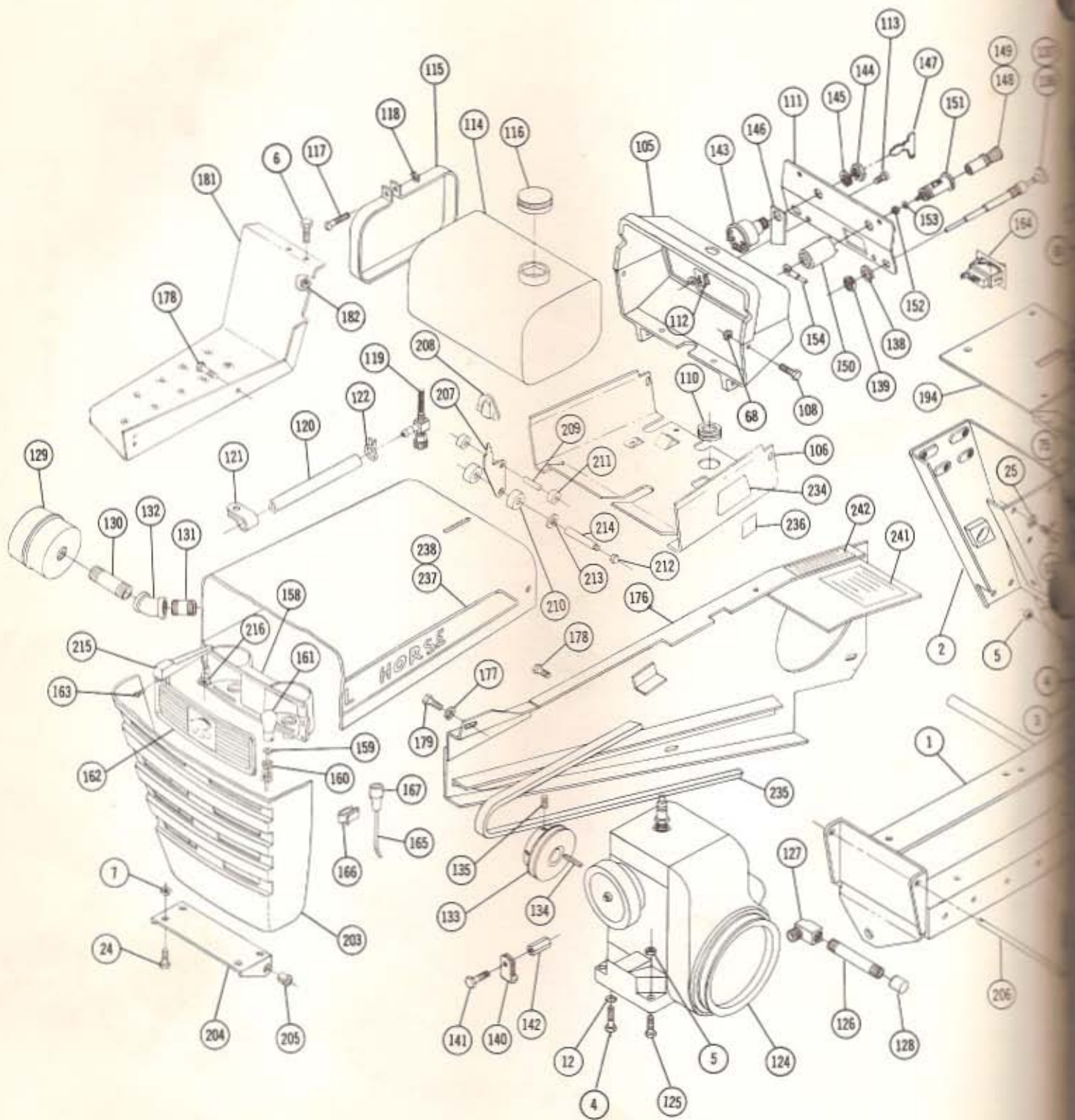


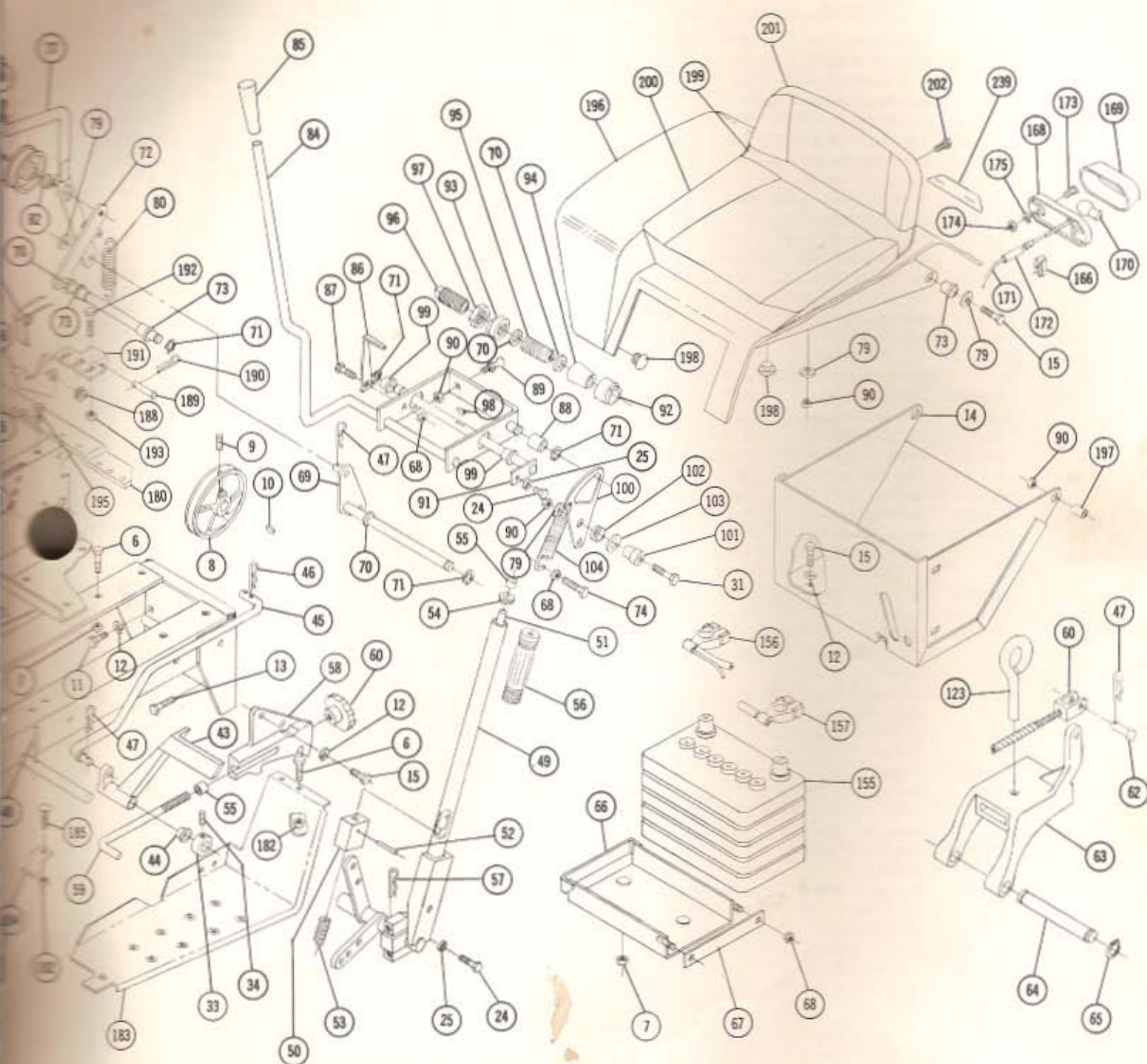
FIG. IV
- 6 -



STEERING & WHEEL ASS'Y.



MAIN FRAME



SEAT & HOOD ASS'Y.

TRACTOR PARTS LIST

(See pages 12 and 13 for Transmission break down and Parts List)

When ordering parts always list Part No. and Name of Part.

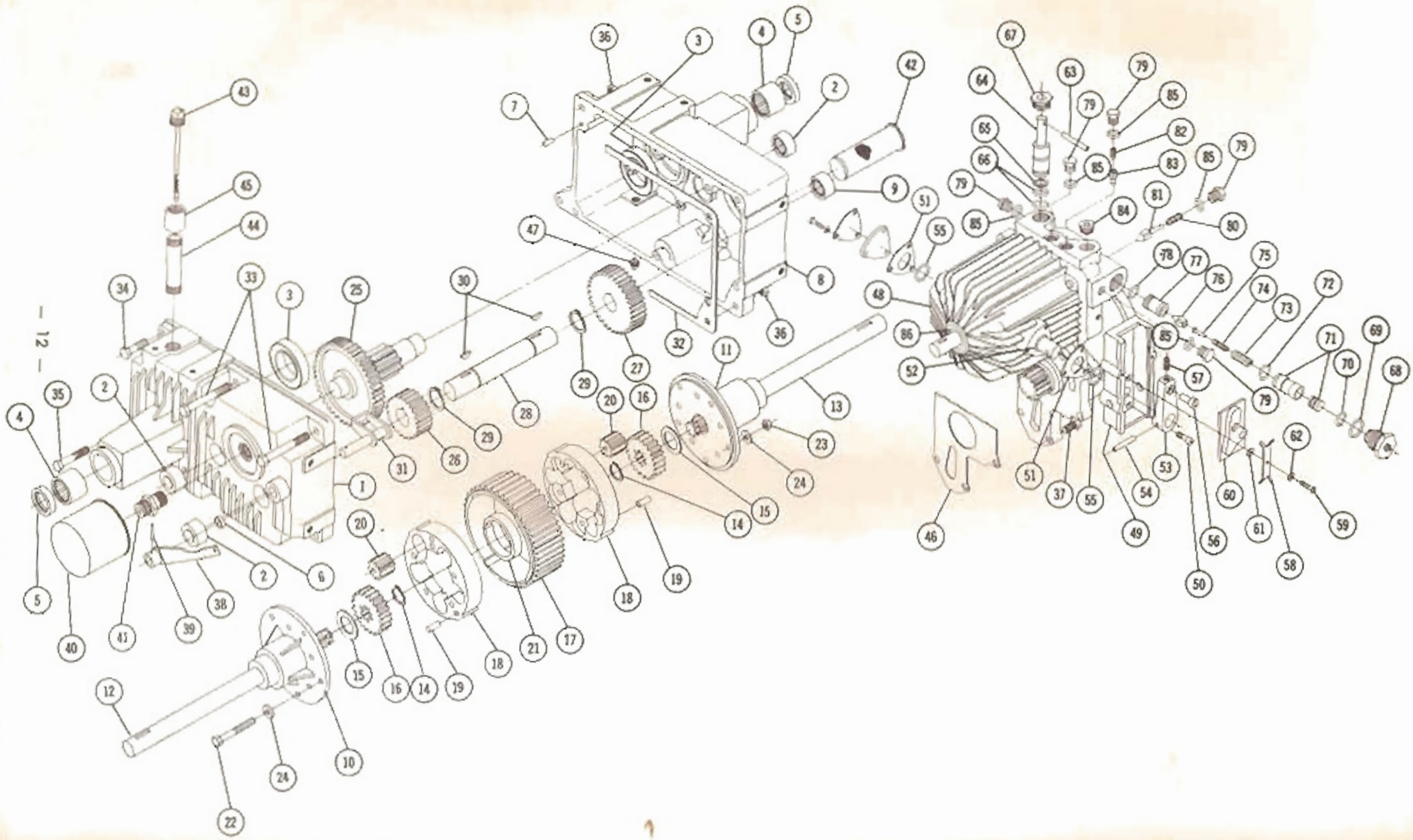
Item No.	Part No.	Description	No. Req'd.	Item No.	Part No.	Description	No. Req'd.
123	1813	Tool Pin	1	184	7456	Bracket Footrest — Anchor	2
124	7724	Ass'y. Engine (Charger 12)	1	185	900214.4	Bolt Corriaga $\frac{3}{16}$ 18 x $\frac{3}{4}$	2
125	908036.4	Bolt Hex $\frac{3}{8}$ -16 x $1\frac{1}{2}$	2	186	7464	Latch Fender	1
126	943333.4	Nipple $\frac{3}{8}$ Pipe x 4	1	187	MW8863	Spring Fender Latch	1
127	8222	Elbow 90° Special	1	188	5977	Bushing — Nyllear	1
128	8224	Cap $\frac{3}{8}$ Pipe	1	189	7617	Pin $\frac{3}{16}$ Rod End	1
129	2873	Muffler	1	190	933503-4	Hairpin Cotter	1
130	943367.4	Nipple 1" Pipe x $2\frac{1}{2}$	1	191	7616	Bracket — Fender Latch	1
131	3947	Nipple 1" Close Pipe	1	192	908002-4	Screw $\frac{1}{4}$ -20 x $\frac{3}{8}$ Hex Head	2
132	3939	Elbow 1" Pipe x 45°	1	193	915661-4	Nut $\frac{1}{4}$ -20 Elastic Stop	2
133	7443	Pulley — Engine	1	194	7559	Plate — Cover	1
134	6507	Key $\frac{1}{4}$ x $\frac{1}{4}$ x $\frac{1}{2}$	1	195	960151-4	Bolt Whizlock $\frac{1}{4}$ -20 x $\frac{1}{2}$	4
135	909862-5	Set Screw $\frac{3}{16}$ 18 x $\frac{3}{8}$	2	196	7417	Ass'y. Fender	1
136	5170	Ass'y. Control — Choke	1	197	4937	Spoiler	2
137	6484	Ass'y. Control — Throttle	1	198	5667	Bumper — Bubber	4
138	920127-4	Lockwasher $\frac{3}{8}$ Shockproof	2	199	7018	Ass'y. Seat Base	1
139	1364	Nut Round $\frac{3}{8}$ -18	2	200	7019	Cushion — Seat	1
140	2879	Clip	2	201	7020	Cushion — Back	1
141	960150.4	Screw $\frac{1}{4}$ -20 x $\frac{3}{8}$ Whizlock	1	202	7027	Screw Whizlock $\frac{1}{4}$ -20 x $\frac{1}{2}$	5
142	5431	Nut Hex Special $\frac{1}{4}$ -20	1	203	7230	Ass'y. Hood	1
143	7572	Ass'y. Switch — Ignition	1	204	5455	Bracket Hood Hinge	1
144	7261	Nut Hex — Special	1	203	5457	Bushing — Nylon	2
145	920159.4	Lockwasher $\frac{3}{8}$ Dia.	1	206	6490	Rod — Pivot	1
146	5451	Insulator — Switch	1	207	5467	Lever — Hood Latch	1
147	7262	Key — Ignition	1	208	5469	Knob	1
148	5480	Ass'y. Cigar Lighter	1	209	923182	Roll Pin $\frac{3}{16}$ x $\frac{3}{8}$	1
149	5481	Ass'y. Knob & Plug	1	210	5505	Roller — Rubber	2
150	5483	Shell	1	211	5468	Roller — Steel	2
151	5482	Ass'y. Socket	1	213	915932-4	Nut — High Crown $\frac{1}{4}$ -24	2
152	915562	Nut $\frac{1}{4}$ -32 Brass	2	213	5466	Speed Nut Push On $\frac{1}{8}$ Dia.	2
153	920078-4	Lockwasher $\frac{1}{8}$	1	214	5522	Rod — Hood Latch	1
154	5484	Ass'y. Wire	1	215	5438	Ornaments — Hood	1
155	7778	Battery	1	216	5437	Speed Nut — Push On — $\frac{1}{8}$ Dia.	2
156	7664	Wiring Harness	1	217	5432	Ass'y. Wheel & Tire	2
157	6488	Wire — Battery to Ground	1	218	5433	Wheel	2
158	7223	Ass'y. Reflector Housing	1	219	5434	Tire 9 x 12 Lawn & Garden	2
159	7226	Ass'y. Wire & Terminal	1	220	5485	Valve	2
160	7227	Spring	1	221	1004	Lug Bolt $\frac{3}{8}$ -20	10
161	2228	Bulb #1156	2	222	5637	Assembly Wheel Tire & Tube	2
162	7075	Lens	1	223	5635	Wheel	2
163	7229	Screw #6-32 x $\frac{3}{8}$ Special	4	224	4999	Ball Bearing	4
164	7184	Switch	1	225	5636	Tire 16 x 5.50 — 8	2
165	7185	Harness — Head Light	1	226	5512	Tube	2
166	3023	Clip	5	227	2844	Washer	2
167	7618	Connector — Three Wire	1	228	2816	Hub Cap	2
168	7680	Base Tail Light	1	229	7420	Steering Wheel	1
169	5487	Cover — Tail Light	1	230	7469	Invert	1
170	6488	Bulb 12V Tail Light	2	231	933215	Roll Pin $\frac{1}{4}$ x $1\frac{1}{2}$	1
171	7574	Ass'y. Wire Tail Light to Switch	1	232	937014	#9 Key — Woodruff	1
172	6922	Connector — Two Wire	1	232	7458	Collar	1
173	909138-4	Bolt Round Head #10-32 x $\frac{3}{8}$	2	234	7561	Decal "Charger"	2
174	915551-4	Nut Hex #10-32	2	235	7478	"V" Belt — Drive	1
175	920079-4	Lockwasher #10	2	235	7570	Decal "12" (Charger 12)	2
176	7436	Ass'y. Belt Guard	1	237	7476	Decal Hood Trim R.H.	1
177	920084.4	Lockwasher $\frac{3}{8}$ Dia.	1	238	7477	Decal Hood Trim L.H.	1
178	960175.4	Bolt Whizlock $\frac{3}{16}$ -18 x $\frac{3}{8}$	6	239	5604	Decal Fender	1
179	908045.4	Bolt Hex $\frac{3}{16}$ -14 x $\frac{3}{8}$	1	240	7421	Decal Steering Wheel	1
180	7463	Bracket Footrest	1	241	7634	Decal — Free Wheeling	1
181	7454	Footrest R.H.	1	242	7633	Decal — Maintenance Intr.	1
182	915662-4	Nut $\frac{3}{16}$ -18 Elastic Stop	6				
183	7455	Footrest L.H.	1				

TRACTOR PARTS LIST

(See pages 12 and 13 for Transmission break down and Parts List)

When ordering parts always list Part No. and Name of Part.

Item No.	Part No.	Description	No. Req'd.	Item No.	Part No.	Description	No. Req'd.
1	7627	Ass'y. Frame	1	62	932120.4	Pin Clevis 1/2 Dia.	2
2	7665	Ass'y. Hoodstand	1	63	3926	Hitch	1
3	6825	Cover - Dust	1	64	3988	Pin	1
4	908034.4	Bolt Hex 3/8-16 x 1	8	65	936125	Snap gung 3/8 Shaft	2
5	915663.4	Nut Elastic Stop 3/8-16	10	66	7781	Ass'y. Battery Box	1
6	908017.1	Bolt Hex 3/8-18 x 3/8	8	67	7779	Link - Battery Clamp	1
7	915112.6	Nut Nylok 3/8-18	8	68	915111.6	Nut - Nylok 1/2-20	8
8	7446	Pulley	1	69	7474	Ass'y. Lever - Brake	1
9	909862.5	Set Screw Nylok 3/8-18 x 3/8	1	70	920011.4	Washer 1/2 SAE	4
10	937010	Key #6 Woodruff 3/32 x 3/8	1	71	5701	"E" Ring 1/2 Dia. Shaft	3
11	908033.4	Bolt Hex 3/8-16 x 3/8	2	72	6130	Ass'y. Arm & Rod	1
12	920083.4	Lockwasher 3/8 Dia.	10	73	5666	Bushing	4
13	908033.6	Bolt Nylok 3/8-16 x 3/8	4	74	908003.4	Bolt Hex 1/4-20 x 3/2	1
14	6110	Ass'y. Tool Box	1	75	915234.1	Nut Jam 1/4-20	2
15	908032.4	Bolt Hex 3/8-16 x 3/2	8	76	920081.4	Lockwasher 3/8	1
16	6465	Hub - Wheel - 5 Bolt	2	77	7432	Ass'y. Handle - Brake	1
17	937022	Key #15 Woodruff	2	78	6129	Grip Handle	1
18	909554	Set Screw Square Head 3/8-16 x 1	2	79	920009.4	Washer 3/8 SAE	6
19	915236.1	Nut Hex 3/8-16 Jam	2	80	6135	Spring - Brake	1
20	5638	Axle - Front	1	81	7434	Pulley - Idler	1
21	1030	Fitting - Grease	3	82	7435	Spacer	1
22	1481	Fitting - Grease 45°	1	83	911400	Bolt - Special 3/8-16 x 1 1/2	1
23	6214	Ass'y. Pin & Plate	1	84	7598	Ass'y. Cam Control Arm	1
24	908015.4	Bolt Hex 1/2-18 x 1 1/2	9	85	6129	Handle - Plastic	1
25	920082.4	Lockwasher 3/8	9	86	6128	Indicator - Speed	1
26	5630	Ass'y. Spindle R.H.	1	87	908001.4	Bolt Hex 1/4-20 x 1/2	1
27	5631	Ass'y. Spindle L.H.	1	88	MW-2195	Bushing - Bronze	1
28	5618	"E" Ring 3/8 Dia.	3	89	6127	Pin - Cam Block	1
29	6396	Support - Steering	1	90	915113.6	Nut - Nylok 3/8-16	6
30	6397	Bushing	1	91	7604	Ass'y. Rod - Cam Pivot	1
31	908035.4	Bolt Hex 3/8-16 x 1 1/8	3	92	7599	Collar - Friction	1
32	7447	Ass'y. Shaft Upper Steering	1	93	7601	Collar - Bracket Pivot	1
33	1085	Collar	2	94	7600	Cone - Friction	1
34	909848.5	Set Screw Nylok 1/4-20 x 1/4	2	95	7602	Spring - Friction	1
35	6469	Ass'y. Steering Shaft Lower	1	96	7603	Collar - Friction - Adj.	1
36	5210	Washer - Shim (.015)	3	97	915247.4	Nut 3/8-10 Jam	1
37	1278	Washer - Shim (.050)	3	98	937007	Key - Woodruff 3/8 x 1 1/2	1
38	932035.4	Collar Pin	1	99	5666	Bushing	2
39	6472	Bearing - Sideflange	1	100	6142	Plate - Cam - Neutral	1
40	5628	Ass'y. Ball Joint R.H.	1	101	6143	Spacer - Cam Plate	1
41	5629	Ass'y. Ball Joint L.H.	1	102	5983	Bushing - Nylon	1
42	915002.6	Nut Nylok 3/8-24	4	103	3765	Washer 1/2 Dia. Special	1
43	6403	Pedal Neutral	1	104	1230	Spring	1
44	6254	Bushing - Pedal	2	105	5430	Housing - Control Panel	1
45	6113	Rod Neutral	1	106	5458	Support - Fuel Tank	1
46	933504.4	Hairpin Cotter	1	107	908016.4	Bolt Hex 3/8-18 x 3/8	4
47	933503.4	Hairpin Cotter	8	108	960152.4	Bolt Whizlock 1/4-20 x 3/8	4
48	933188	Rollpin 3/8 x 1	1	109	5409	Bushing - Nylon	1
49	5448	Ass'y. Lift Lever	1	110	5439	Grammar - Rubber	1
50	4438	Plunger	1	111	7379	Panel - Complete	1
51	5449	Rod	1	112	5442	Speed Nut #10-16	4
52	933168	Roll Pin 1/2 x 3/8	1	113	926308.4	Screw Self Tap #10-16	4
53	3624	Spring	1	114	5417	Tank Fuel	1
54	3578	Guide - Plunger	1	115	5459	Clamp Tank	1
55	3680	Cap	2	116	5186	Cap - Fuel Tank	1
56	1800	Grip - Handle	1	117	909059.4	Bolt Round Head 1/4-20 x 1 1/2	1
57	933506.4	Hairpin Cotter	1	118	915315.4	Nut Square 1/4-20	1
58	5640	Quadron	1	119	4941	Ass'y. Lifter & Valve	1
59	2179	Rod Height Control	1	120	6485	Hose Pool	1
60	5280	Knob - Height Control	1	121	4256	Clip - Nose	2
61	3931	Ass'y. Cable - Lift	1	122	950153	Clamp - Corbin	2



PARTS LIST

5062 TRANSMISSION

(Order No. 5062 for Complete Transmission)

When ordering parts always list Part No. and Name of Part.

Item No.	Part No.	Description	No. Req'd.	Item No.	Part No.	Description	No. Req'd.
1	6454	Case R.H.	1	44	943346-4	Nipple 1/2" Pipe x 3 1/2"	1
2	1532	Bearing — Needle 1" I.D.	3	45	943004	Coupling 1/2" Pipe	1
3	1533	Bearing — Ball 1 1/2 I.D.	2	46	3955	Gasket — Pump	1
4	1526	Bearing — Needle 1 1/8 I.D.	2	47	943460	Plug 1/8" Pipe	1
5	6449	Seal 1 1/8 I.D.	2	48	7880	Ass'y. Hydro — Gear Unit (Complete)	1
6	5959	Seal Brake Shaft 1/2" I.D.	1	49	5993	Support — Cam Block	1
7	3915	Pin — Dowel	2	50	911037	Screw — Socket Head 1/4-20 x 1/2	3
8	6455	Case L.H.	1	51	6826	Shim	2
9	5960	Bearing Needle 1" I.D.	1	52	972116	"O" Ring	1
10	7194	End Cap R.H.	1	53	5994	Arm — Cam Follower	1
11	7195	End Cap L.H.	1	54	933215	Roll Pin 3/4 x 1 1/4	1
12	7202	Axle Rear R.H.	1	55	6829	Washer — Seal	2
13	7203	Axle Rear L.H.	1	56	5995	Eccentric — Cam Follower	1
14	7169	Snap Ring	2	57	909849-5	Set Screw Nylak 1/4-20 x 3/8	1
15	7199	Washer — Thrust	2	58	5998	Plate Tension	2
16	7197	Gear Axle	2	59	909000-4	Screw Round Head #8-32 x 1/2	2
17	7196	Gear — Differential Ring	1	60	5996	Cam	1
18	7200	Body	2	61	920229-4	Washer	2
19	933209	Roll Pin 1/4 x 1/2	2	62	920078-4	Lockwasher #8	2
20	7198	Gear — Differential Pinion	10	63	933196	Roll Pin 3/4 x 2	1
21	7235	Spring — Cylindrical	1	64	7266	Valve	1
22	908138-4	Bolt 3/8-16 x 3 1/4	5	65	7268	Ring — Back Up	1
23	915663-4	Nut — Elastic Stop 3/8-16	5	66	920743	"O" Ring	2
24	920009-4	Washer — Flat 3/8 SAE	10	67	7267	Plug	1
25	6452	Gear — 44 Teeth — 11 Teeth	1	68	6444	Ass'y. Dampening Valve (with "O" Rings)	2
26	5963	Gear — 22 Teeth	1	69	970118	"O" Ring	2
27	5964	Gear — 33 Teeth	1	70	971015	"O" Ring	2
28	5969	Shaft 1" Dia.	1	71	7054	Ass'y. Piston & Sleeve (Matched Ass'y.)	2
29	936131	Snap Ring 1" Shaft	2	72	971018	"O" Ring	2
30	937014	Key #9 Woodruff	2	73	7364	Spring — Check Valve	2
31	5966	Assembly — Park Brake	1	74	7052	Spring — Relief Valve	2
32	5999	Gasket — Case	1	75	7051	Seat — Spring	2
33	908143-4	Bolt Hex 3/8-16 x 5	2	76	7050	Cone — Relief Valve	2
34	908038-4	Bolt Hex 3/8-16 x 2	3	77	7049	Sleeve	2
35	908043-4	Bolt Hex 3/8-16 x 3 1/2	1	78	971017	"O" Ring	2
36	915113-6	Nut Nylak 3/8-16	6	79	7752	Plug	7
37	908034-6	Bolt Hex Nylak 3/8-16 x 1	3	80	7753	Spring — Check Valve	2
38	5969	Ass'y. Lever — Brake	1	81	7754	Valve — Check Valve	2
39	933152	Roll Pin 1/2 x 3/8	1	82	7755	Spring — Charge Pump Relief Valve	1
40	5990	Ass'y. — Filter	1	83	7756	Cone — Relief Valve	1
41	5991	Fitting	1	84	943462	Plug — Pipe Hex Socket 1/2-14	1
42	5992	Strainer	1	85	973310	"O" Ring	7
43	6155	Ass'y. Dipstick & Filter	1	86	7877	Seal	1

ATTACHMENTS AVAILABLE FOR CHARGER 12

48" ROTARY MOWER (5-1481)
42" ROTARY MOWER (5-1421)
36" ROTARY MOWER (5-1361)
37" SNOW THROWER (6-1211)
50" SICKLE BAR MOWER (7-1311)
42" DOZER BLADE (6-1111)
32" DISC (7-1511)
36" TILLER (7-1211)
12" PLOW (7-1411)
TRAILING CULTIVATOR (7-1711)
TWO SECTION CULTIVATOR (7-1721)
GRADER BLADE (7-1111)
SPIKE TOOTH HARROW (7-1611)
4-WHEEL UTILITY WAGON (7-2111)
2-WHEEL DUMP TRAILER (7-2211)
SPIKED DISC AERATOR (7-2411)
LAWN ROLLER (7-2311)

OPTIONAL ACCESSORIES

FRONT AND REAR WHEEL DISCS (8-0511)
POWER TAKE-OFF (8-3211)
REAR WHEEL WEIGHTS (8-1111)
FRONT WHEEL WEIGHTS (8-1211)
ATTACHMENT CLUTCH (8-3111)
TIRE CHAINS (8-2511)
HYDRAULIC POWER LIFT (8-4111)
DUAL WHEELS (8-0711)

ALL SEASON USE

