

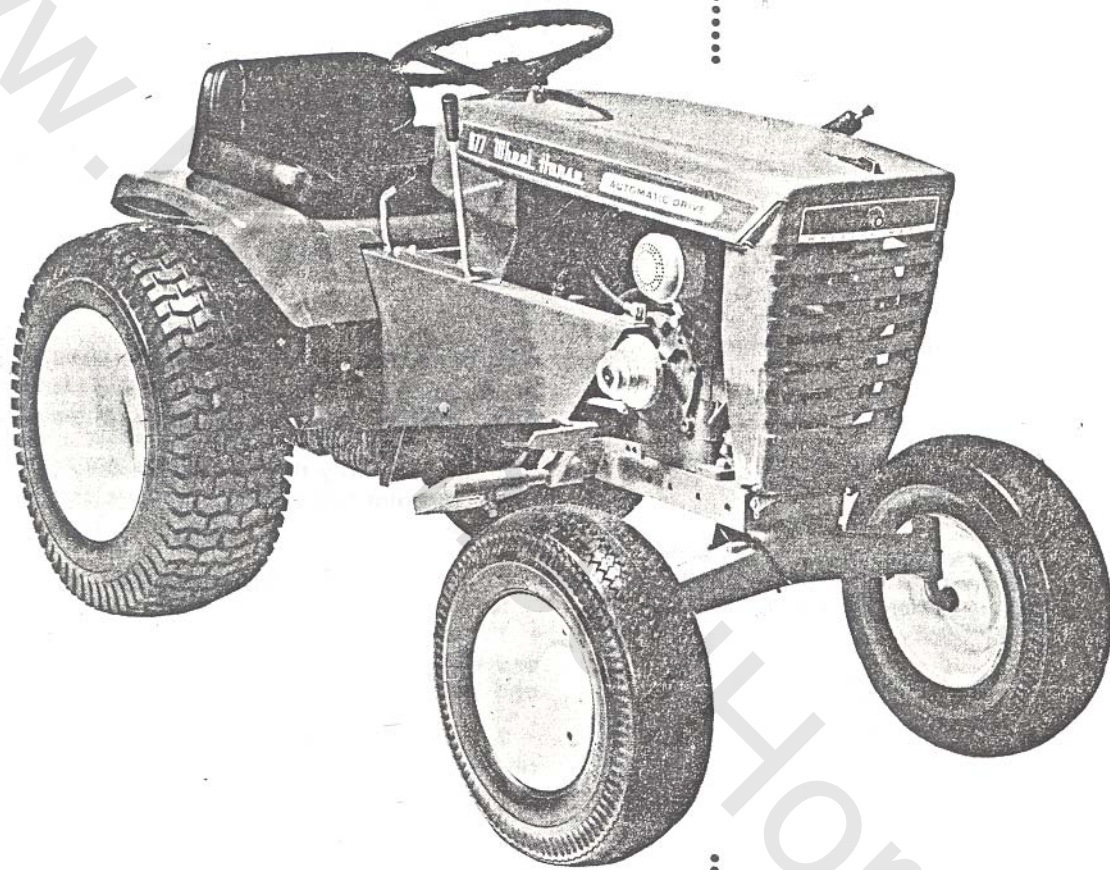
Wheel Horse®

LAWN AND GARDEN TRACTORS

OWNERS MANUAL

model

877



WHEEL-HORSE PRODUCTS, INC.

SOUTH BEND, IND.

ASSEMBLY

A. The tractor is shipped in one carton with the rear wheel and tire assemblies, Part No. 5432, in a separate carton.

B. Mount rear wheels to hubs using the ten lug bolts, Part No. 1004.

C. Mount front wheels to spindles using the $\frac{3}{8}$ -16 x $\frac{7}{8}$ Nyllok bolts, Part No. 908033-6 and washers, Part No. 2844. There are two shim washers, one .015 thick and one .050 thick, in the loose part package for each wheel. Use one or both as shown on the exploded view drawing to provide a close fit. Press on hub caps.

D. Mount the steering wheel to steering shaft the $\frac{1}{4}$ x 1 Roll Pin, Part No. 933213. Press on steering wheel insert.

WARRANTY

We warrant WHEEL HORSE PRODUCTS for ONE YEAR from date of purchase against defective parts and workmanship. We will replace, free of charge, any defective part if returned to the factory PREPAID*. Wheel Horse Products, Inc., reserves the right to make changes or improvements upon its products without imposing any obligation upon itself to install the same upon its products that have been previously manufactured.

The engine and battery carry a separate warranty by the manufacturer. FOR ENGINE OR BATTERY SERVICE, CONTACT YOUR LOCAL ENGINE OR BATTERY SERVICE HEADQUARTERS.

*All warranty claims, work, shipments, must be handled through your authorized Wheel Horse dealer.

NOTE: 90 Day Warranty for Commercial Use.

BEFORE YOU START

There is **NO OIL** in the crankcase of the engine when shipped from the factory. **OIL . . .** See Engine Manual.

Wheel-a-Matic Transmission: The transmission has been filled with Automatic Transmission fluid at the factory. (This is Type "A" automatic transmission fluid, which is used in automobiles and may be purchased at any service station.)

A. Remove Plug from transmission fill pipe, (located under seat) and insert dipstick, Part No. 6155. (See Fig. 1). Now check level of transmission fluid to make sure transmission is filled to proper level.

B. To enable moving the tractor by hand you must loosen the towing valve. (See **Towing Instructions.**)

Lubricate all grease fittings with a regular pressure gun lubricant every eight to ten hours of operation. Refer to Figures 3 & 4 for the location of grease fittings.

A light machine oil should be used where indicated.

BATTERY

The battery installed in the tractor is a dry charged battery. It is important that you properly prepare this battery to insure good service and long life.

1. Remove vent caps. Remove or destroy any sealing device which may have been used to close or restrict the vent openings.

2. Fill each cell of the battery to the proper level with the battery electrolyte.

NOTE: Temperature of battery and electrolyte at time of filling should be above 60°F. Never fill battery in the vehicle.

3. **BOOST CHARGE:** 15 amps. for 10 minutes or 7 amps. for 30 minutes. Adjust electrolyte level, if necessary, after charge.

4. **Install battery with battery posts toward the rear of tractor.** Start engine. After battery has been in service, add only approved water.

DO NOT ADD ACID.

TIRES

The front tires are 16x5.50-8 and should be inflated to 12 pounds of air pressure. **The rear tires are 23 x 8.50-12 and should have 8 pounds of air pressure.** The tires can also be filled with ballast if desired. Ordinarily this is not necessary as the weight of the operator will add sufficient weight for adequate traction.

STARTING ENGINE

1. Before starting the engine fill gas tank (located under the hood) with a good grade of regular gas, and open valve on gas tank.

2. Press the foot pedal on the left side of tractor all the way down.

3. Pull throttle lever $\frac{1}{2}$ way out and turn to the right to lock it in position. **Note:** The throttle control has a locking device. Turn the throttle control to the left to unlock, adjust to the desired position and turn to the right to lock.

4. Pull choke lever all the way out to choke engine. If engine is warm and has been running, choking may not be necessary.

5. The tractor has a key starter-switch. Turn key all the way to right to start engine.

6. When engine starts push choke in to off position and regulate throttle control by turning to the left to unlock and push in or out to desired speed.

7. When starting tractor in cold weather set the park brake. This releases the drive belt, and the engine does not have to turn the transmission.

PARKING BRAKE

The parking brake is located on the right side of the tractor. (See Figure 3.) To set the parking brake pull up on the handle. The brake should always be

set when dismantling from tractor, especially on a grade, otherwise the tractor may creep. When brake is set the drive belt is automatically released. **Caution: Do not set parking brake while tractor is in motion as this may result in damage to the transmission.** Always depress foot pedal (on left side) before releasing parking brake.

ATTACHING TOOLS

Complete information on the assembly, attachment, operation and service of the many attaching tools will be provided with each attachment.

All drawn implements attach in seconds. Simply lift the tractor hitch pin, insert the tongue, and replace pin.

NOTE: The idler bracket assembly furnished with the 42" Sickle Bar, will not work on this tractor. (Order Kit Number 6051).

OPERATING INSTRUCTIONS

The speed, direction and braking are controlled by the control handle located on the right side.

- To go Forward push the control handle Forward.
- To go Backward pull the control handle Back.
- To Stop put control handle in Neutral position.
- You may also Stop the tractor at anytime by depressing the foot pedal on the left side.

The tractor speed is affected instantly by the movement of the control handle. For safest operation the control handle should not be moved too rapidly, especially on grades.

TOWING INSTRUCTIONS

This tractor should never be towed or pushed without first releasing the towing valve.

A. The towing valve is located on the back surface of the pump (See Figure 1.) To push or tow open the towing valve, using a $\frac{1}{2}$ " wrench. Be sure to retighten the valve gently, but securely, before operating tractor. **NOTE: This is a needle valve and must not be over tightened.**

B. **CAUTION:** Do not tow for long distance or over a speed of seven (7) miles per hour.

TRANSMISSION CARE

Change oil and oil filter every two years or every 500 hours of operation. The transmission oil capacity is approximately four (4) quarts.

- Use only type "A" automatic transmission oil.
- Check oil periodically and maintain at proper level as indicated on dipstick.

CARE OF TRACTOR

1. Keep tractor greased and oiled regularly. Refer to Figure 3 and 4 for the location of grease fittings. Check transmission and engine case oil levels.

2. Keep engine air cleaner clean. This will add to engine life.

3. Keep tires properly inflated. See previous instructions.

4. Keep tractor covered and in a dry place when not in use.

5. Keep grass and dirt out of engine cowling as these will stop the flow of air and decrease engine life.

6. Keep grass and dirt off transmission and fan screen.

7. Battery — Check Electrolyte level periodically. **NOTE:** If tractor has been in storage it may be necessary to recharge battery.

8. Control Handle Friction Adjustment:

The control handle is friction loaded so it will hold at any desired speed. If the handle does not stay where it is set during operation, the friction may be increased by tightening the two screws that put pressure on the nylon cam (see Figure 2). **CAUTION.** Too much friction will cause excessive wearing of cam and cam block. **Do Not Lubricate Nylon Cam.**

9. Neutral Adjustment:

A. If tractor should creep while in neutral position this can be corrected. To check for creep place tractor on level surface with engine running, and depress foot pedal. Creep on slopes is normal and cannot be entirely eliminated.

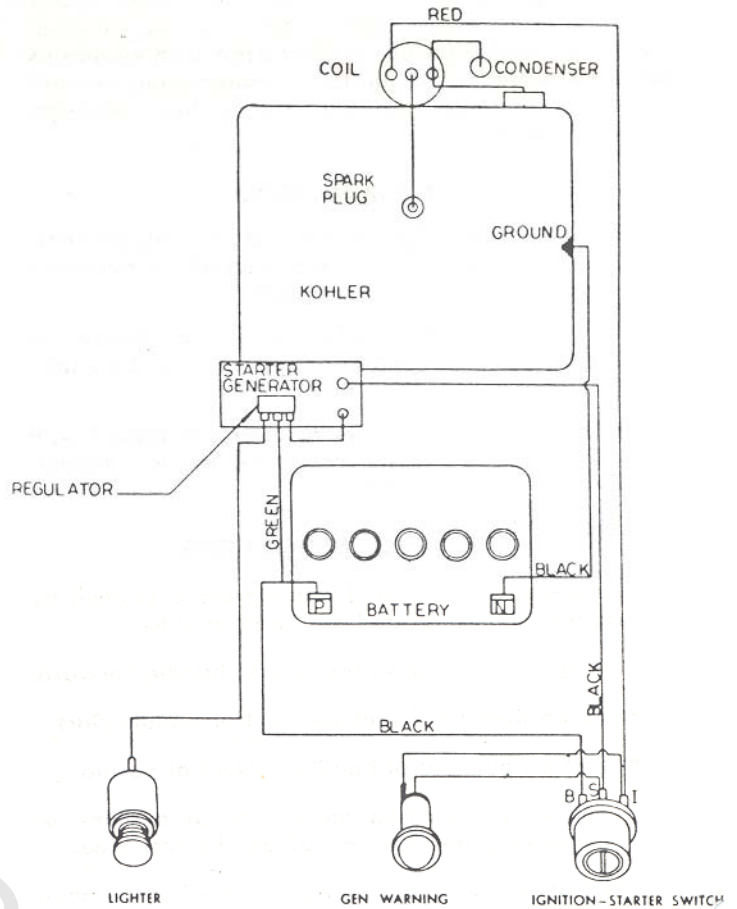
B. To make neutral adjustment (See Figure 2).

1. Block rear wheels off ground.
2. Remove instruction plate, (located in front of the seat) by removing the four screws which hold it.
3. Loosen set screw in arm with allen wrench (See Figure 2).
4. Depress foot pedal on left side.
5. With tractor engine running and park brake disengaged, insert short screwdriver through hole in nylon cam and rotate the eccentric cam pin until rear wheels stop. Now retighten set screw in arm and replace plate.
6. **NOTE:** The lobe on the eccentric pin must be upward for proper operation.
7. When replacing belts be sure to purchase genuine Wheel Horse Belts, as these belts are specifically designed for each application. **NOTE:** Make sure all pulleys are in line.
8. Your tractor is only as good as the service you give it. See your Wheel Horse Dealer for a thorough check-up after each season of use.

SAFETY SUGGESTIONS

Recommended by Outdoor Power Equipment Institute

1. Know the controls and how to stop quickly — read the owners manual.
2. Do not allow children to operate machine; nor adults to operate it without proper instruction.
3. Clear work area of objects which might be picked up and thrown.
4. Disengage all clutches and shift into neutral before starting motor. Keep hands, feet, and clothing away from power driven parts.
5. Do not carry passengers. Keep children and pets a safe distance away.
6. Never direct discharge of any material toward bystanders, nor allow anyone near machine while in operation.
7. Disengage power to attachment (s) and stop motor before leaving operator position.
8. Take precautions when leaving machine unattended (to avoid accidental starting, rolling away, accidental dropping of any attachment, etc.)
9. Disengage power to any attachment whenever it is not in use, or when traveling from one work area to another.
10. Stay alert for holes and other hidden hazards. Know what is behind you, before backing up.
11. Beware of steep slopes; reduce speed on all side slopes and sharp turns, to prevent tipping or losing control.
12. Don't stop or start suddenly when going uphill or downhill.
13. Use care when pulling loads or using heavy equipment.
14. Watch out for traffic when near roadways.
15. Handle gasoline with care — it is highly flammable.
 - a. Use approved gasoline container.
 - b. Never add gasoline to a running motor — fill tank out of doors wipe up spilled gasoline.
 - c. Replace gasoline cap securely.
 - d. Open doors if motor is run in garage — exhaust gases are dangerous.
17. Keep machine in good operating condition and keep safety devices in place. Use guards as instructed in owner's manual.



WIRING DIAGRAM

SPECIFICATIONS

(Specifications subject to change without notice.)

Length Overall	61 inches
Wheelbase	41 $\frac{1}{4}$ inches
Width Overall	36 inches
Width at Front Wheels	33 $\frac{1}{2}$ inches
Height	37 inches
Height to Top of Hood	33 $\frac{1}{2}$ inches
Approx. Shipping Weight 8 H.P.	545 lbs.
Crop Clearance	7 $\frac{1}{4}$ inches
Frame Clearance	13 $\frac{1}{2}$ inches
Engine (4-cycle, single cylinder, air cooled)	Electric Start
Engine Oil Capacity	2 $\frac{1}{2}$ pints
Fuel Capacity	6 quarts
Tires (front) 5.50-8 Pneumatic (16" wheel dia.)	
Tires (rear) Terra-Type 8.50 x 12" Pneumatic (23" wheel dia.)	
Speeds — Infinitely Variable Forward — 0 to 7 M.P.H.	
Reverse — 0 to 3 $\frac{1}{2}$ M.P.H.	
Turning radius (to outside of outside wheel)	6'

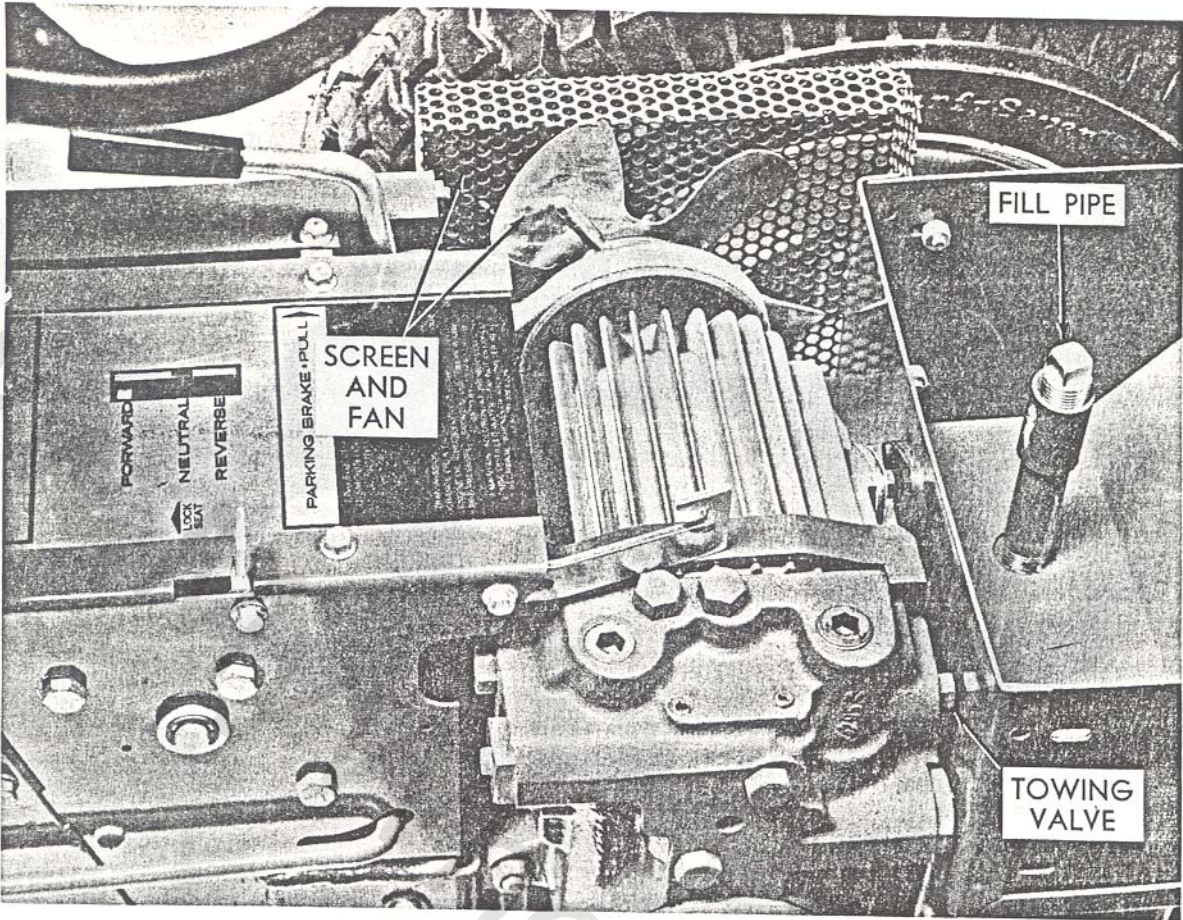


Figure 1

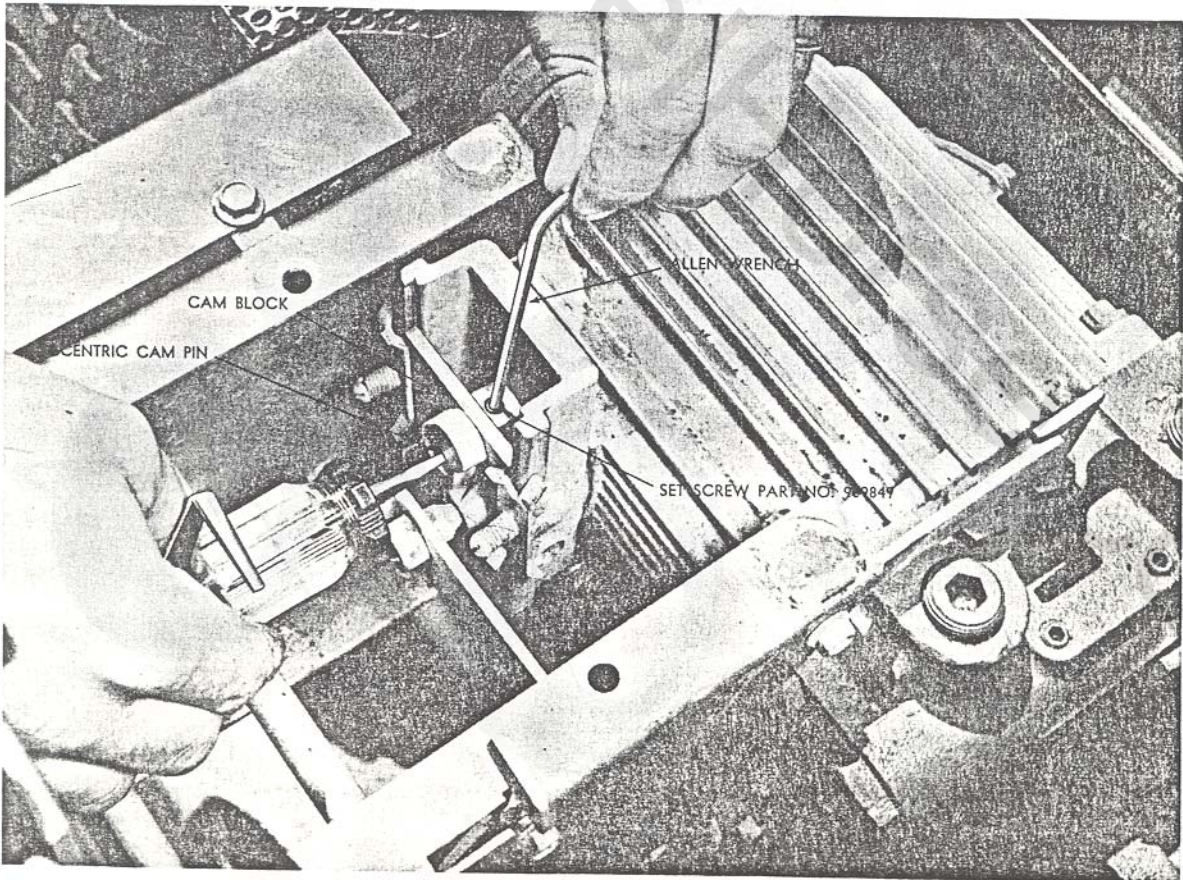


Figure 2

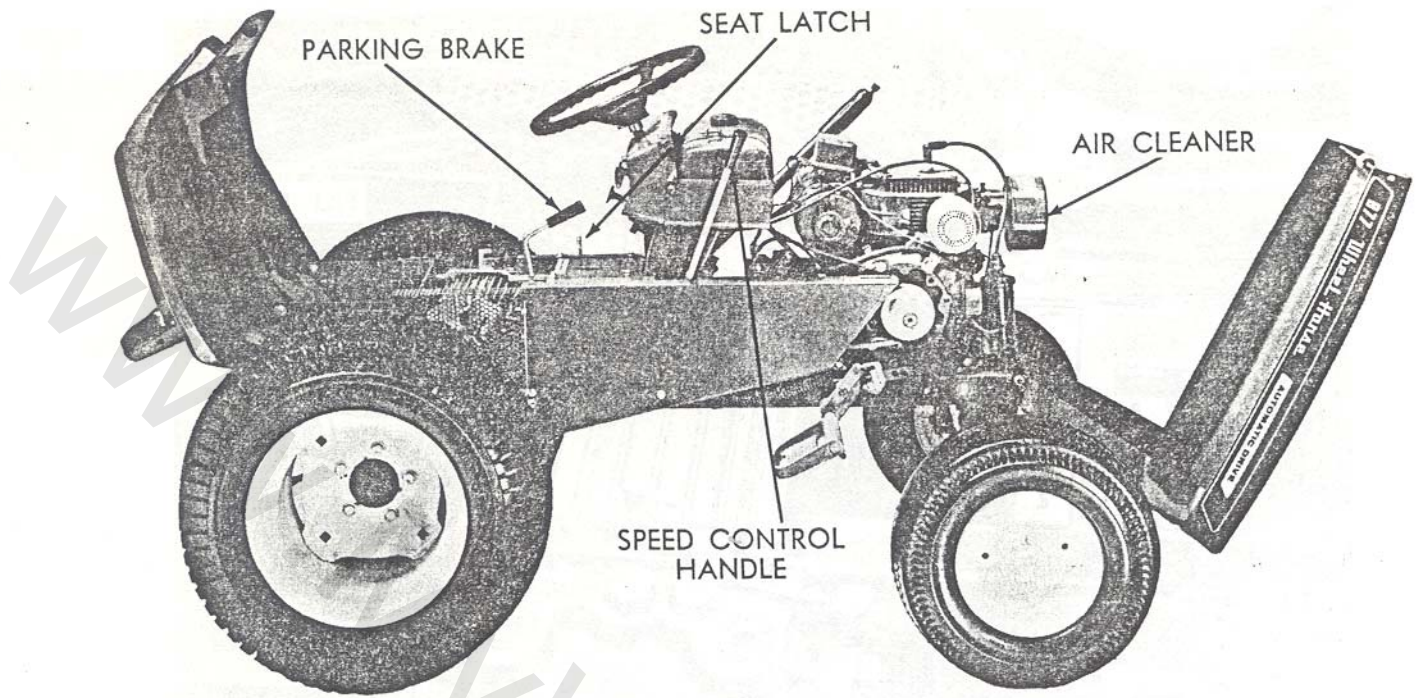


Figure 3

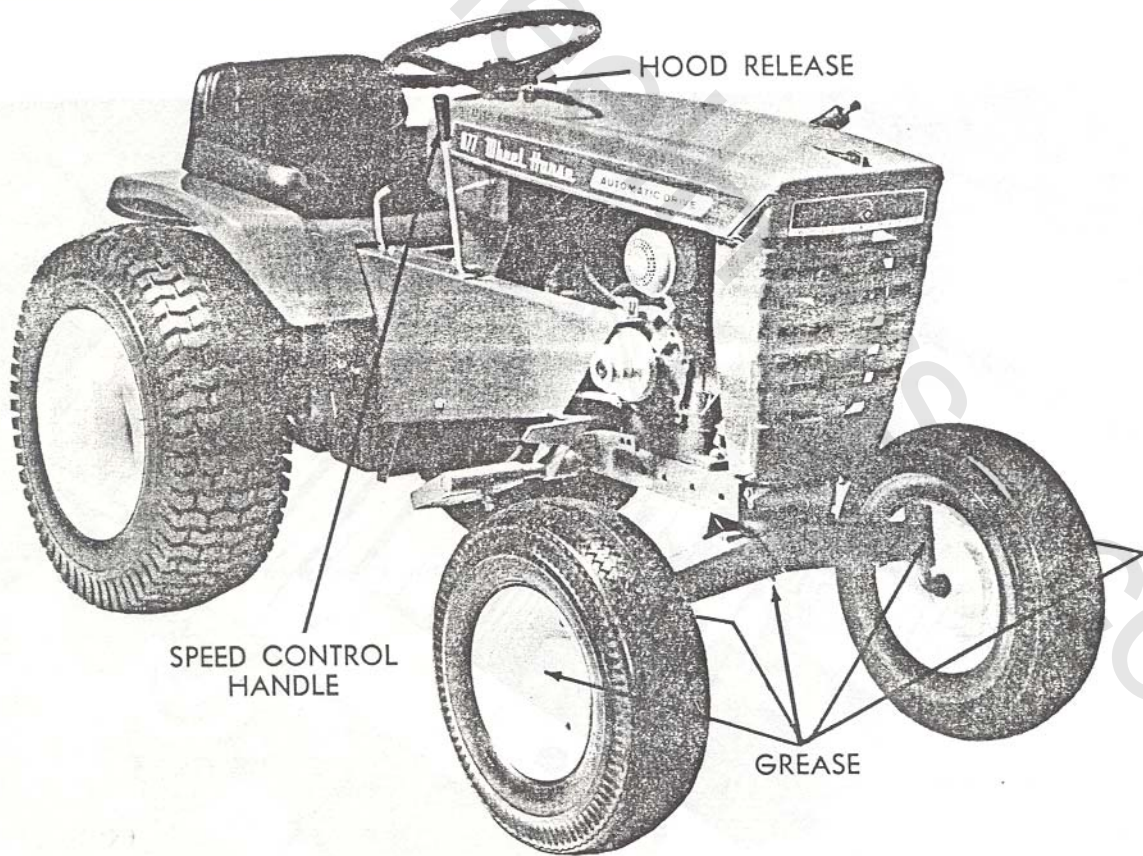
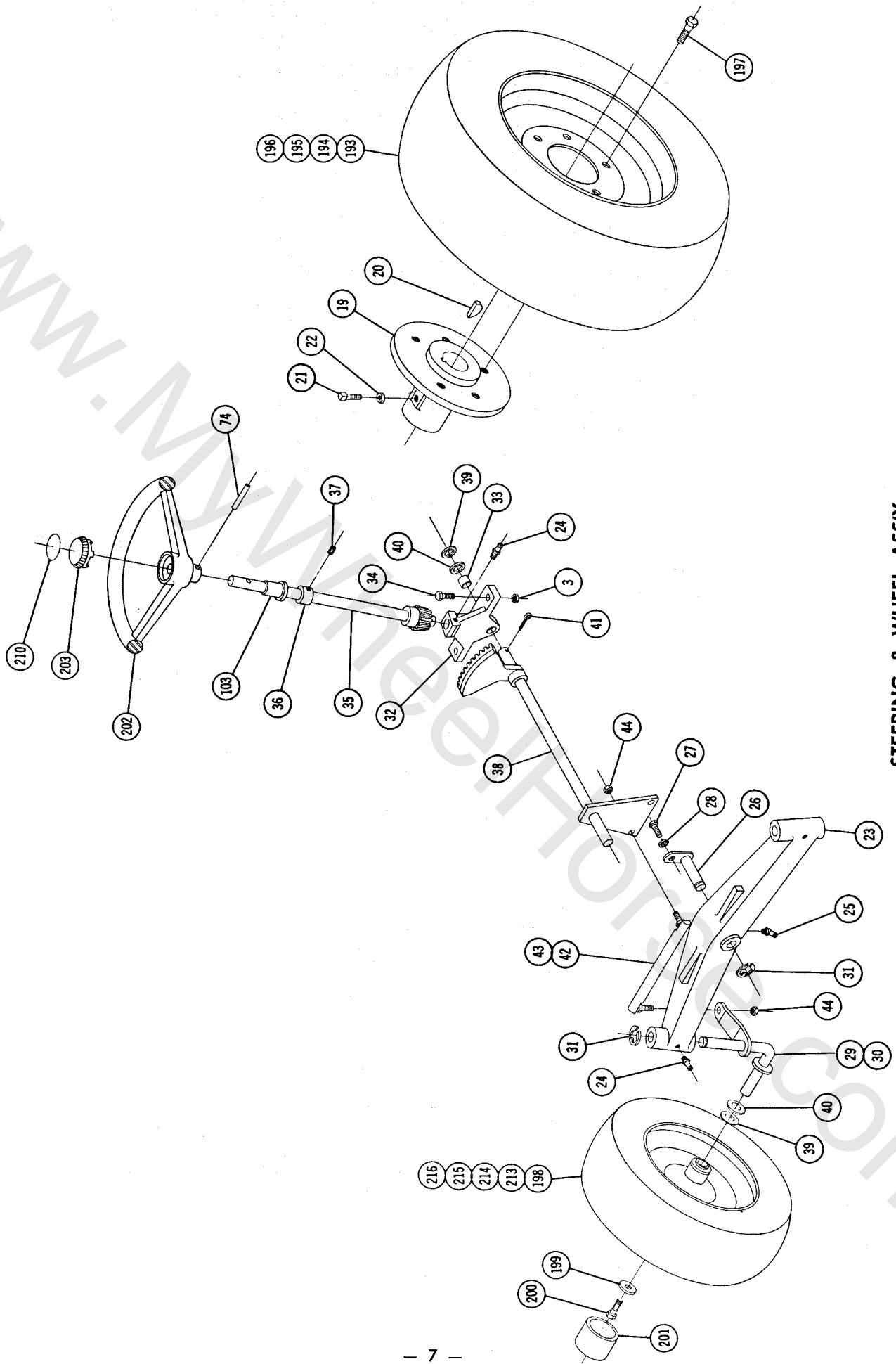
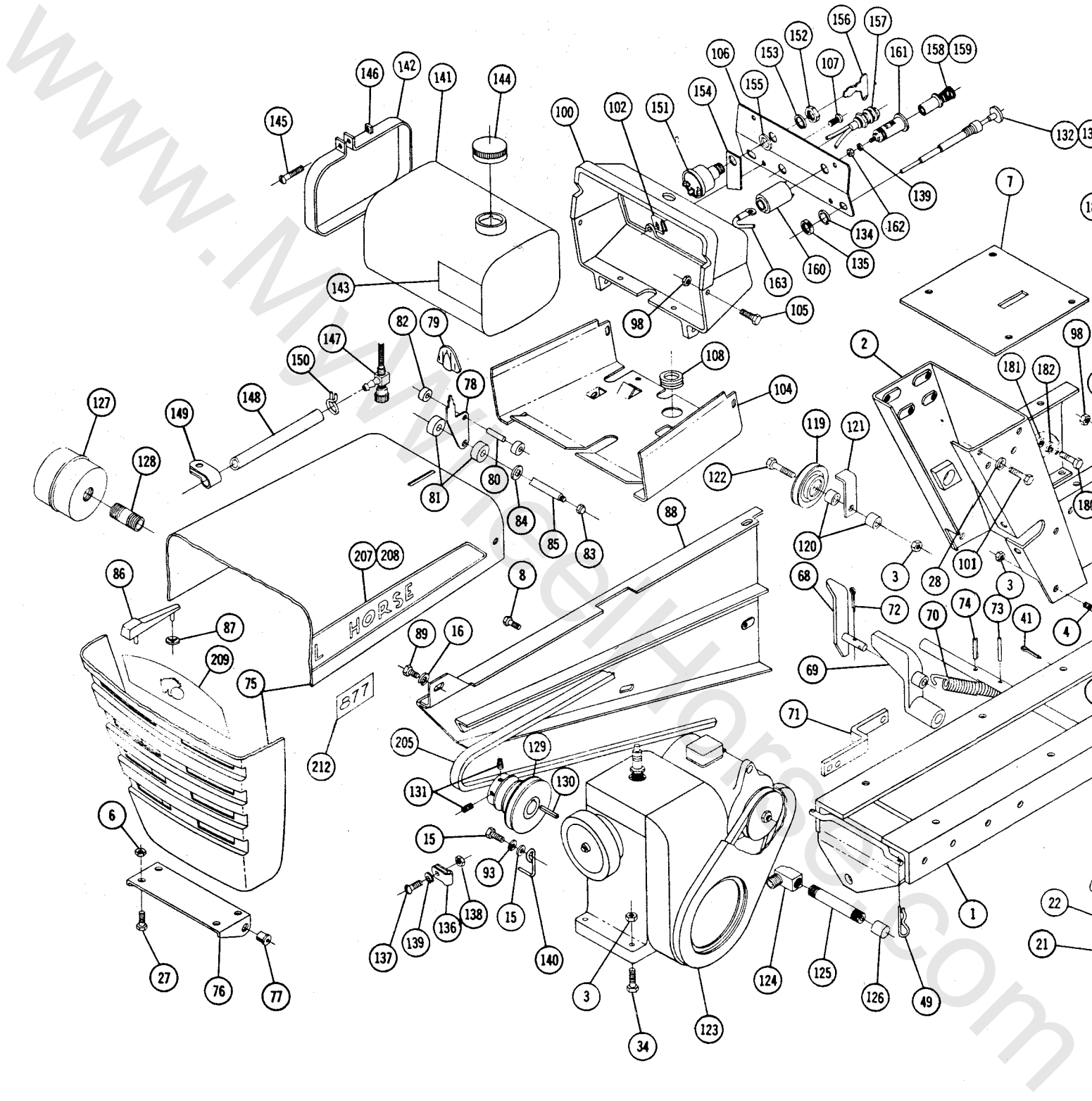
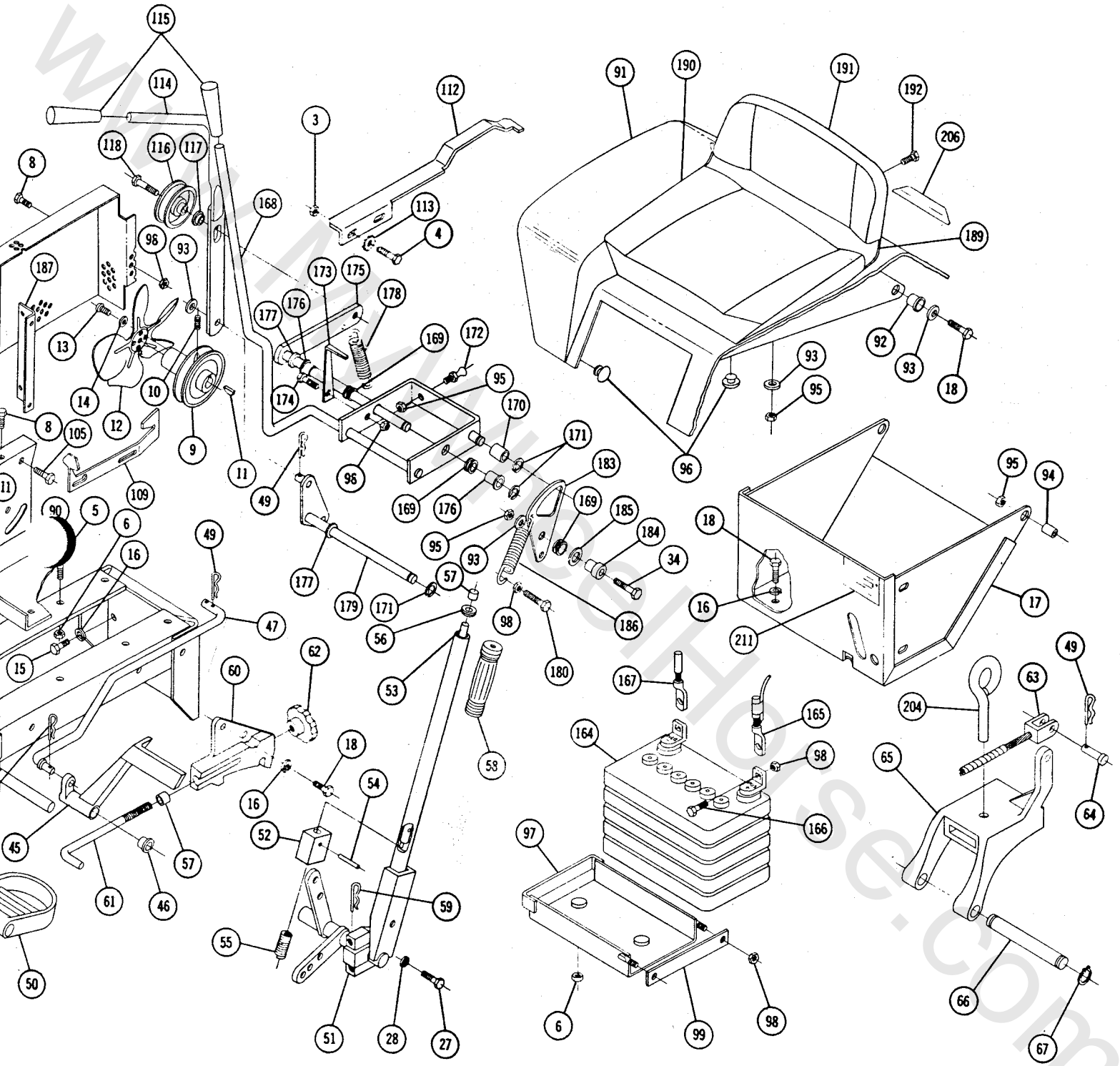


Figure 4



STEERING & WHEEL ASSY.





ER & HOOD ASS'Y.

PARTS LIST for 877 LAWN and GARDEN TRACTOR

(See pages 12 and 13 for Transmission break down and Parts List)

When ordering parts always list Part No. and Name of Part.

Ref. No.	Part No.	Description	No. Req'd.	Ref. No.	Part No.	Description	No. Req'd.
1	6102	Ass'y. Frame	1	55	3624	Spring	1
2	6104	Ass'y. Hoodstand	1	56	3578	Guide — Plunger	1
3	915663-4	Nut $\frac{3}{8}$ -16 Elastic Stop	11	57	3680	Cap	2
4	908034-4	Bolt Hex $\frac{3}{8}$ -16 x 1	4	58	1000	Grip — Handle	1
5	908017-4	Bolt Hex $\frac{5}{16}$ -18 x $\frac{3}{4}$	4	59	933506-4	Hairpin Cotter	1
6	915112-6	Nut $\frac{5}{16}$ -18 Nylok	10	60	5640	Quadrant	1
7	7008	Ass'y. Cover Plate	1	61	2179	Rod — Height Control	1
8	960151-4	Bolt $\frac{1}{4}$ -20 x $\frac{1}{2}$ Whizlock	11	62	5280	Knob — Height Control	1
9	6109	Pulley	1	63	3931	Ass'y. Cable — Lift	1
10	909862-5	Set Screw $\frac{5}{16}$ -18 x $\frac{5}{16}$ Nylok	1	64	932120-4	Pin — Clevis $\frac{1}{4}$ Dia.	2
11	937010	Key #6 Woodruff $\frac{5}{32}$ x $\frac{5}{8}$	1	65	3926	Hitch	1
12	6108	Fan	1	66	3988	Pin	1
13	908998-4	Screw Round Head #8-32 x $\frac{3}{8}$	4	67	936125	Snap Ring $\frac{3}{4}$ Shaft	2
14	920078-4	Lockwasher #8	4	68	6398	Ass'y. Trip Lever	1
15	908033-4	Bolt Hex $\frac{3}{8}$ -16 x $\frac{7}{8}$	5	69	4239	Pedal — Attach., Clutch	1
16	920083-4	Lockwasher $\frac{3}{8}$ Dia.	12	70	5714	Spring	1
17	6110	Ass'y. Tool Box	1	71	5416	Link	1
18	908032-4	Bolt Hex $\frac{3}{8}$ -16 x $\frac{3}{4}$	8	72	932025-4	Cotter Pin $\frac{3}{32}$ x 1	2
19	4996	Hub — Wheel — 5 Bolt	2	73	933188	Roll Pin $\frac{3}{16}$ x 1	2
20	937022	Key #15 Woodruff	2	74	933213	Roll Pin $\frac{1}{4}$ x 1	2
21	909554	Set Screw Square Head $\frac{3}{8}$ -16 x 1	4	75	5465	Ass'y. Hood	1
22	915113-4	Nut — Hex $\frac{3}{8}$ -16	4	76	5455	Bracket — Hood Hinge	1
23	5638	Axle — Front	1	77	5457	Bushing — Nylon	2
24	1030	Fitting — Grease	3	78	5467	Lever — Hood Latch	1
25	1481	Fitting — Grease 45°	1	79	5469	Knob	1
26	6216	Ass'y. Pin & Plate	1	80	933182	Roll Pin $\frac{3}{16}$ x $\frac{5}{8}$	1
27	908015-4	Bolt — Hex $\frac{5}{16}$ -18 x $\frac{1}{2}$	8	81	5505	Roller — Rubber	2
28	920082-4	Lockwasher $\frac{5}{16}$	8	82	5468	Roller — Steel	2
29	5630	Ass'y. Spindle R.H.	1	83	915902-4	Nut — Low Crown #10-24	2
30	5631	Ass'y. Spindle L.H.	1	84	5466	Speed Nut — $\frac{1}{4}$ -Dia. Push-On	2
31	5618	"E" Ring $\frac{3}{4}$ Dia.	3	85	5522	Rod — Hood Latch	1
32	6396	Support — Steering	1	86	5438	Ornament — Hood	1
33	6397	Bushing	1	87	5437	Speed Nut — $\frac{1}{8}$ Dia. Push-On	2
34	908035-4	Bolt — Hex $\frac{3}{8}$ -16 x $1\frac{1}{4}$	8	88	7021	Ass'y. Belt Guard	1
35	6567	Ass'y. — Steering Shaft — Upper	1	89	908030-6	Bolt Hex $\frac{3}{8}$ -16 x $\frac{1}{2}$ — Nylok	1
36	1085	Collar	1	90	6825	Cover — Dust	1
37	909848-5	Set Screw $\frac{1}{4}$ -20 x $\frac{1}{4}$ Nylok	1	91	6120	Ass'y. Fender	1
38	6565	Ass'y. Steering Shaft — Lower	1	92	5666	Bushing — Nylon	2
39	5210	Washer — Shim (.015)	3	93	920009-4	Washer $\frac{3}{8}$ Dia.	7
40	1278	Washer — Shim (.050)	3	94	4937	Spacer	2
41	932035-4	Cotter Pin $\frac{3}{16}$ x $1\frac{1}{4}$	2	95	915113-6	Nut — $\frac{3}{8}$ -16 Nylok	6
42	5628	Ass'y. Ball Joint R.H.	1	96	5667	Bumper — Rubber	4
43	5629	Ass'y. Ball Joint L.H.	1	97	4953	Ass'y. Battery Box	1
44	915002-6	Nut — Nylok $\frac{3}{8}$ -24	4	98	915111-6	Nut $\frac{1}{4}$ -20 Nylok	16
45	6403	Pedal — Clutch	1	99	4958	Clamp — Battery	1
46	6254	Bushing	2	100	5450	Housing — Control Panel	1
47	6113	Rod — Brake	1	101	908016-4	Bolt Hex $\frac{5}{16}$ -18 x $\frac{5}{8}$	4
48	933504-4	Hairpin Cotter	1	102	5442	Speed Nut #10-16	4
49	933503-4	Hairpin Cotter	7	103	5409	Bushing — Nylon	1
50	4421	Foot Rest	2	104	5458	Support — Fuel Tank	1
51	2266	Ass'y. Lift Lever	1	105	960152-4	Bolt $\frac{1}{4}$ -20 x $\frac{3}{8}$ Whizlock	6
52	4438	Plunger	1	106	6121	Panel — Complete	1
53	4439	Rod	1	107	926308-4	Screw — Self Tap #10-16	4
54	933168	Roll Pin $\frac{5}{32}$ x $1\frac{3}{16}$	1	108	5439	Grommet — Rubber	1

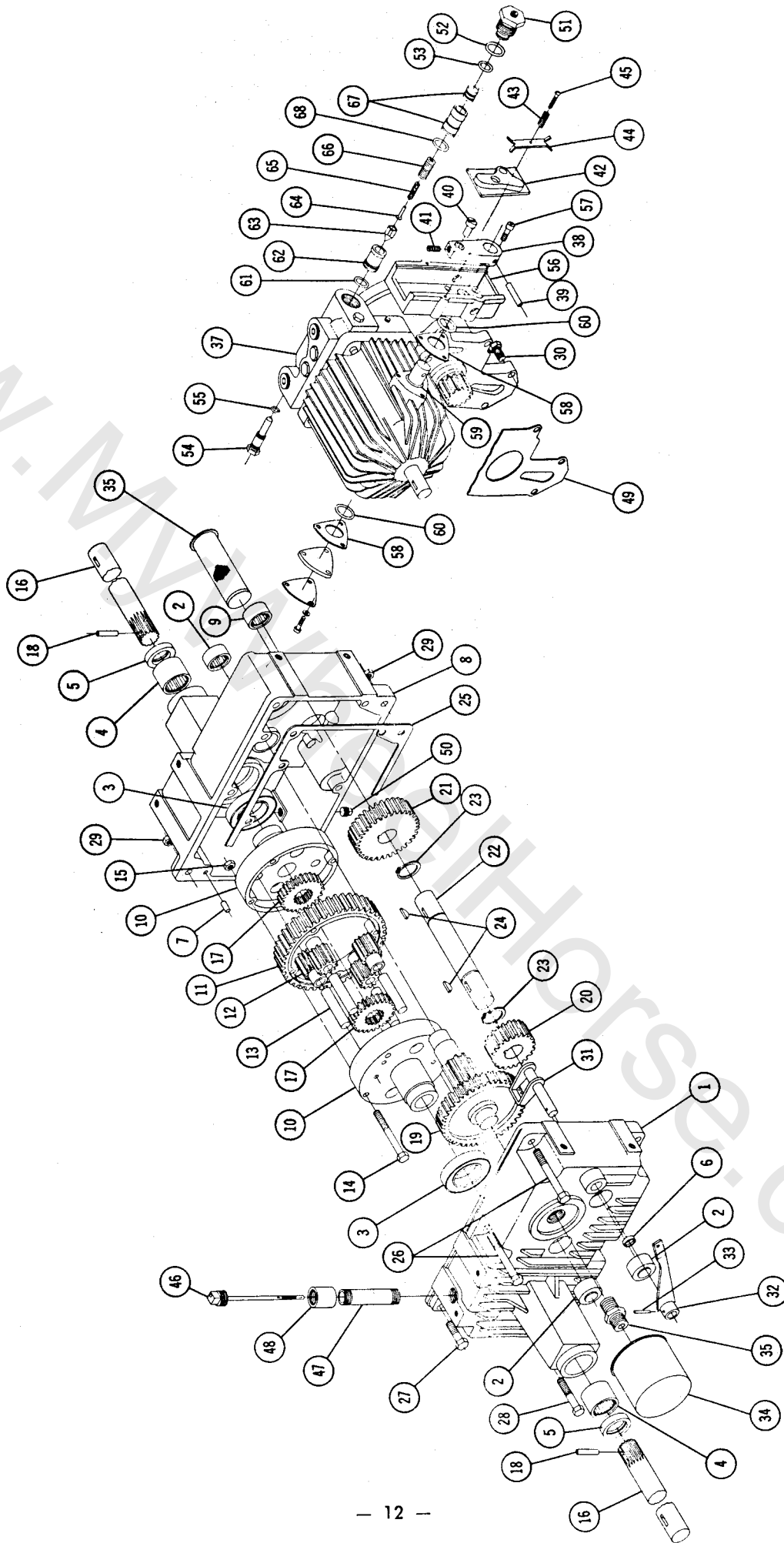
PARTS LIST for 877 LAWN and GARDEN TRACTOR

(See pages 12 and 13 for Transmission break down and Parts List)

When ordering parts always list Part No. and Name of Part.

Ref. No.	Part No.	Description	No. Req'd.	Ref. No.	Part No.	Description	No. Req'd.
109	6402	Latch — Fender	1	163	5484	Ass'y. Wire	1
110	920007-4	Washer ¼—SAE	2	164	3653	Battery	1
111	MW-4404	Spring Washer ⅜ I.D.	2	165	5445	Wiring Harness	1
112	7010	Support Frame	1	166	908002-4	Bolt Hex ¼-20 x ⅝	2
113	920124-4	Lockwasher ⅜ External Tooth	2	167	3660	Wire Battery to Ground	1
114	7011	Ass'y. Handle — Brake	1	168	6123	Ass'y. Cam Control Arm	1
115	6129	Grip — Handle	2	169	5983	Bushing — Nylon	3
116	MW-8821	Pulley — Idler	1	170	MW-2195	Bushing — Bronze	1
117	6134	Spacer	1	171	5701	"E" Ring ½ Shaft	3
118	911400	Bolt ⅜-16 x 1½	1	172	6127	Pin — Cam Block	1
119	1623	Pulley	1	173	6128	Indicator — Speed	1
120	6309	Spacer	2	174	908001-4	Bolt Hex ¼-20 x ½	1
121	6360	Clip	1	175	6130	Ass'y. Arm & Rod — Cam Pivot	1
122	908039-4	Bolt Hex ⅜-16 x 2¼	1	176	5666	Bushing	2
123	5151	Ass'y. Engine — Kohler	1	177	920011-4	Washer ½ SAE	1
124	5222	Elbow 90° — Special	1	178	6135	Spring — Brake	1
125	943333-4	Nipple ⅜ Pipe x 4	1	179	7016	Ass'y. Lever — Brake	1
126	5224	Cap ⅜ Pipe	1	180	908003-4	Bolt Hex ¼-20 x ¾	2
127	5429	Muffler	1	181	915234-4	Nut Jam ¼-20	1
128	943367-4	Nipple 1" Pipe x 2½	1	182	920081-4	Lockwasher ¼	1
129	6122	Pulley — Engine	1	183	6142	Plate — Cam — Neutral	1
130	1349	Key ¼ x ¼ x 1½	1	184	6143	Spacer — Cam Plate	1
131	909862-5	Set Screw ⅜-18 x ⅝	2	185	3765	Washer ½ Dia. Special	1
132	5170	Ass'y. Control — Choke	1	186	1230	Spring	1
133	5171	Ass'y. Control — Throttle	1	187	6745	Angle — Shield Mounting	1
134	920127-4	Lockwasher ⅜ Shakeproof	2	188	6746	Shield — Fan	1
135	1364	Nut — Round ⅜-18	2	189	7018	Ass'y. Seat Base	1
136	1277	Clip	1	190	7019	Cushion — Seat	1
137	909000-4	Bolt — Round Head #8-32 x ½	1	191	7020	Cushion — Back	1
138	915537-4	Nut Hex #8-32	1	192	7027	Screw Hex ¼-20 x ½ (Black)	5
139	920078-4	Lockwasher #8	2	193	5432	Ass'y. Wheel & Tire	2
140	6574	Retainer — Belt	1	194	5433	Wheel 12 x 7 JA	2
141	5417	Tank — Fuel	1	195	5434	Tire 23 x 8.50-12 Lawn & Garden	2
142	5459	Clamp — Tank	1	196	5435	Valve	2
143	5464	Tape — Insulator	1	197	1004	Lug Bolt — Wheel ⅜-20	10
144	5186	Cap — Fuel Tank	1	198	5637	Ass'y. Wheel, Tire & Tube	2
145	909059-4	Bolt Round Head ¼-20 x 1¼	1	199	2844	Washer	2
146	915182-4	Nut Square ¼-20	1	200	908033-6	Bolt Hex ⅜-16 x ⅝ Nylok	2
147	4941	Ass'y. Filter & Valve	1	201	2816	Hub Cap	2
148	1796	Hose — Fuel	1	202	4983	Steering Wheel	1
149	4256	Clip — Hose	1	203	2897	Insert	1
150	950153	Clamp ⅜ Dia. Corbin	1	204	1813	Tool Pin	1
151	4988	Ass'y. Switch — Ignition	1	205	6146	"V" Belt	1
152	4882	Nut Hex ⅜-32 Special	1	206	5604	Decal — Fender	1
153	920160-4	Lockwasher ⅜ Dia. Internal Tooth	1	207	6556	Decal — Hood Trim R.H.	1
154	5451	Insulator — Switch	1	208	6557	Decal — Hood Trim L.H.	1
155	920215-4	Washer — Spacer	1	209	6555	Decal — Grille	1
156	4989	Key — Ignition	2	210	4581	Decal — Steering Wheel	1
157	5423	Ass'y. Lamp — Generator	1	211	6154	Decal — Free Wheeling	1
158	5480	Ass'y. Cigar Lighter — Complete	1	212	7024	Decal — "877"	2
159	5481	Ass'y. Knob & Plug	1	213	5635	Wheel	2
160	5483	Shell	1	214	4999	Bearing — Ball	4
161	5482	Ass'y. Socket	1	215	5636	Tire 16 x 5.50-8	2
162	915562	Nut #8-32 Brass	2	216	5512	Tube	2

5052 TRANSMISSION



PARTS LIST

5052 TRANSMISSION

(Order No. 5052 for Complete Transmission)

When ordering parts always list Part No. and Name of Part.

Item No.	Part No.	Description	No. Req'd.	Item No.	Part No.	Description	No. Req'd.
1	5956	Case R.H.	1	35	5991	Fitting — Filter	1
2	1532	Bearing — Needle 1" I.D.	3	36	5992	Strainer	1
3	1533	Bearing — Ball 1½"	2	37	6200	Ass'y. Hydrogear Unit Complete	1
4	1528	Bearing — Needle 1" I.D.	2	38	5994	Arm — Cam Follower	1
5	5958	Seal — Oil 1" I.D.	2	39	933215	Roll Pin ¼ x 1¼	1
6	5959	Seal — Brake Shaft ½" I.D.	1	40	5995	Eccentric — Cam Follower	1
7	3915	Pin — Dowel	2	41	909849-5	Set Screw ¼-20 x ⅝ Nylok	1
8	5957	Case — L.H.	1	42	5996	Cam	1
9	5960	Bearing Needle 1" I.D.	1	43	5997	Spring	2
10	3905	Case — Differential	2	44	5998	Plate — Tension	2
11	3906	Gear — Differential Bull	1	45	909004-4	Screw Round Head #8-32 x ⅜	2
12	4235	Gear — Differential Pinion	4	46	6155	Ass'y. Dipstick & Filter	1
13	3909	Pin — Differential	4	47	943346-4	Nipple ½ Pipe x 3½	1
14	908146	Bolt Hex Special ⅝-18 x 3¼	4	48	943004	Coupling ½ Pipe	1
15	1316	Nut — Huglock ⅝-18	4	49	5955	Gasket — Pump	1
16	5961	Axle — Rear	2	50	943460	Plug ¼ Pipe	1
17	3908	Gear — Axle	2	51	6444	Dampening Valve Complete (With "O" Rings)	2
18	933217	Roll Pin ¼ x 1½	2	52	970053	"O" Ring — Dampening Valve (Large)	2
19	5962	Gear	1	53	970014	"O" Ring — Dampening Valve (Small)	2
20	5963	Gear 22 Teeth	1	54	6448	Towing Valve	1
21	5964	Gear 33 Teeth	1	55	970010	"O" Ring — Towing Valve	1
22	5965	Shaft 1" Dia.	1	56	5993	Support — Cam Block	1
23	936131	Snap Ring 1" Shaft	2	57	911037	Screw — Socket Head Cap ¼-20 x ½	3
24	937014	Key #9 Woodruff	2	58	6826	Shim	2
25	5999	Gasket — Case	1	59	970141	"O" Ring	1
26	908143-4	Bolt Hex ⅜-16 x 5	2	60	6829	Seal — Rubber	2
27	908038-4	Bolt Hex ⅜-16 x 2	3	61	970016	"O" Ring 1¼ x 1⅜ x ⅛	2
28	908043-4	Bolt Hex ⅜-16 x 3½	1	62	7049	Relief Valve Sleeve	2
29	915113-6	Nut ⅜-16 Nylok	6	63	7050	Relief Valve Cone	2
30	908034-6	Bolt Hex ⅜-16 x 1" Nylok	3	64	7051	Spring Seat	2
31	5966	Ass'y. Park Brake	1	65	7052	Relieve Valve Spring	2
32	5969	Ass'y. Lever — Brake	1	66	7053	Check Valve Spring	2
33	933152	Roll Pin ⅛ x ¾	1	67	7054	Ass'y. Piston & Sleeve (Matched Ass'y.)	2
34	5990	Ass'y. — Filter (Throw-A-Way)	1	68	970017	"O" Ring ¾ x ⅞ x ⅛	2

www.MyWheelHorse.com

www.MyWheelHorse.com

ATTACHMENTS AVAILABLE FOR

Model 877

36" ROTARY MOWER (RM-367)
42" SICKLE BAR MOWER (SMS-425)
32" SNOW THROWER (ST-326)
42" DOZER BLADE (BD-4267)
32" DISC (DP-861)
8" PLOW (PP-458)
36" TILLER (RT-366)
4-WHEEL UTILITY WAGON (UW-645)
2-WHEEL DUMP TRAILER (LTD-244)
TRAILING CULTIVATOR (AC-7)
TWO SECTION CULTIVATOR (AC-675)
LAWN ROLLER (LR-322)
SPIKED DISC AERATOR (SC-152)
GRADER BLADE (MB-405)
SPIKE TOOTH HARROW (PH-183)
GANG MOWER 60" CUTTING WIDTH REEL TYPE
(SGM-503)

OPTIONAL ACCESSORIES

TIRE CHAINS (TC-13)
FRONT AND REAR DISCS (WD-7)
WHEEL WEIGHTS — FRONT (WF-60)
WHEEL WEIGHTS — REAR (WW-126)
POWER TAKE OFF (PTO-66)
HYDRAULIC POWER LIFT (HY-6)
DUAL WHEELS (DW-62)