

Wheel Horse®

LAWN AND GARDEN TRACTORS

models

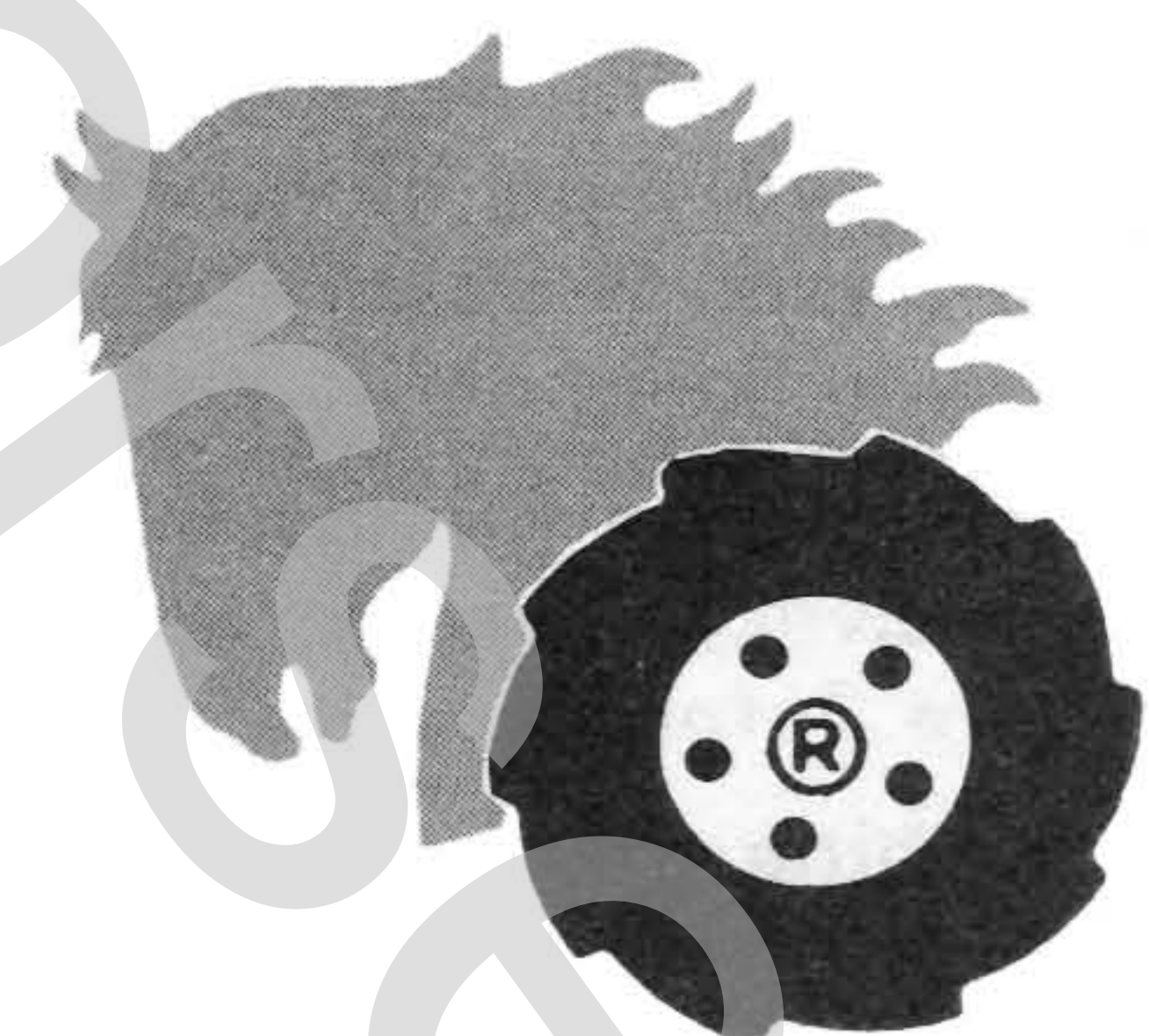
607, 657



**OPERATION AND
SERVICE MANUAL
WITH PARTS LIST**

WHEEL-HORSE PRODUCTS, INC.

SOUTH BEND, IND.



ASSEMBLY

A. The tractor is shipped in one carton with the rear wheel and tire assemblies, Part No. 1667, in a separate carton.

B. Mount rear wheels to hubs using the ten lug bolts, Part No. 1004.

C. Mount front wheels to spindles using the $\frac{3}{8}$ -16 x $\frac{7}{8}$ Nylok bolts, Part No. 908033-6 and washers, Part No. 2844. There are two shim washers, one .015 thick and one .050 thick, in the loose part package for each wheel. Use one or both as shown on the exploded view drawing to provide a close fit. Press on hub caps.

D. Mount the steering wheel to steering shaft with the $\frac{1}{4}$ x 1 Roll Pin, Part No. 933273. Press on steering wheel insert.

WARRANTY

We warrant WHEEL HORSE PRODUCTS for ONE YEAR from date of purchase against defective parts and workmanship. We will replace, free of charge, any defective part if returned to the factory PREPAID*. Wheel Horse Products, Inc., reserves the right to make changes or improvements upon its products without imposing any obligation upon itself to install the same upon its products that have been previously manufactured.

The engine and battery carry a separate warranty by the manufacturer. FOR ENGINE OR BATTERY SERVICE, CONTACT YOUR LOCAL ENGINE OR BATTERY SERVICE HEADQUARTERS.

*All warranty claims, work, shipments, must be handled through your authorized Wheel Horse dealer.

NOTE: 90 Day Warranty for Commercial Use.

BEFORE YOU START

There is **NO OIL** in the crankcase of the engine when shipped from the factory. **OIL . . .** See Engine Manual.

Check oil level every 5 operating hours or each time equipment is used.

Change oil every 25 operating hours or sooner if equipment is operated in extremely dusty or dirty conditions. Read Engine Manual and follow all instructions pertaining to type of lubrication specified. The engine is the heart of your tractor and it is very important that you keep it in good condition.

Lubricate all grease fittings with a regular pressure gun lubricant every eight to ten hours of operation. Refer to Figure 1 for the location of grease fittings.

A light machine oil should be used on all moving parts to keep joints from wearing and squeaking.

Remove oil filler plug, located at the left rear side of the transmission, and fill to level of hole with a good grade of S.A.E. 40 oil (will require about 3 pints).

The transmission should be checked after every 40 hours of use. The transmission should be drained once a year by removing plug on bottom to drain oil. Refill as above paragraph. This is a regular automotive type transmission with sliding gears and should have the same care as your car.

BATTERY

The battery installed in the tractor is a dry charged battery. It is important that you properly prepare this battery to insure good service and long life.

1. Remove vent caps. Remove or destroy any sealing device which may have been used to close or restrict the vent openings.

2. Fill each cell of the battery to the proper level with the battery electrolyte.

NOTE: Temperature of battery and electrolyte at time of filling should be above 60°F. Never fill battery in the vehicle.

3. BOOST CHARGE: 15 amps. for 10 minutes or 7 amps. for 30 minutes. Adjust electrolyte level, if necessary, after charge.

4. Install battery with battery posts toward the rear of tractor. Start engine. After battery has been in service, add only approved water.

DO NOT ADD ACID.

TIRES

The front tires are 4.00-8 and should be inflated to 12 pounds of air pressure. **The rear tires are 6 x 12 and should have 8 pounds of air pressure.** The tires can also be filled with ballast if desired. Ordinarily this is not necessary as the weight of the operator will add sufficient weight for adequate traction.

STARTING ENGINE

1. Before starting the engine fill gas tank (located under the hood) with a good grade of regular gas, and open valve on fuel filter. See Page 4.

2. Place gear shift lever in neutral position.

3. Pull throttle lever $\frac{1}{2}$ way out and turn to the right to lock it in position. **Note:** The throttle control has a locking device. Turn the throttle control to the left to unlock, adjust to the desired position and turn to the right to lock.

4. Pull choke lever all the way out to choke engine. If engine is warm and has been running, choking may not be necessary.

5. A. The Model 657 tractor has a key starter-switch. Turn key all the way to right to start engine.

B. The Model 607 tractor has a recoil starter with an off and on key. To start turn key to right and pull recoil starter.

6. When engine starts push choke in to off position and regulate throttle control by turning to the left to unlock and push in or out to desired speed.

7. Depress clutch pedal on left side of tractor before selecting desired gear range.

8. When starting tractor in winter it is desirable to depress clutch so engine does not have to turn transmission.

CLUTCHING

Don't force the gear shift lever if the gears do not immediately mesh. Depress clutch pedal all the way down and let up, then depress again and shift. To avoid sudden starts, release clutch pedal slowly. While in motion do not shift gears without depressing clutch pedal.

The clutch pedal also operates the brakes WHEN DEPRESSED ALL THE WAY DOWN. For this reason, you should depress the clutch pedal ONLY $\frac{2}{3}$ OF THE WAY DOWN WHEN SHIFTING while in motion. This clutch-brake pedal combination makes clutching automatic as you apply the brakes to stop.

PARKING BRAKE

The parking brake is located on the left side of the tractor as shown in Figure 1. To set the parking brake depress the clutch-brake pedal as far as possible and push the parking brake down. To release the brake depress the clutch-brake pedal.

ATTACHING TOOLS

Complete information on the assembly, attachment, operation and service of the many attaching tools will be provided with each attachment.

All drawn implements attach in seconds. Simply lift the tractor hitch pin, insert the tongue, and replace pin.

All power implements will use the attachment clutch pedal located on the right side of the tractor.

CARE OF TRACTOR

1. Keep tractor greased and oiled regularly. Refer to Figure 1 for the location of grease fittings. Check transmission and engine case oil levels.

2. Keep engine air cleaner clean. This will add to engine life.

3. Keep tires properly inflated. See previous instructions.

4. Keep tractor covered and in a dry place when not in use.

5. Keep grass and dirt out of engine cowling as these will stop the flow of air and decrease engine life.

6. BRAKE ADJUSTMENT. The brake band, located on the left side of the transmission, brakes the transmission and in turn stops the wheels.

To adjust, depress clutch brake pedal and move parking brake lever forward into the engaged position. Tighten nut on brake rod until both rear wheels skid when tractor is pushed — parking brake engaged. Tighten nut another $\frac{1}{2}$ turn. The brake and parking brake are now properly adjusted.

7. CLUTCH-BRAKE PEDAL ADJUSTMENT. The clutch-brake pedal rod may be turned in or out to adjust the pedal to operator's desired position. Remove pin from rod and turn rod in or out for adjustment. There are also two holes in the pedal to adjust for travel. The upper hole is for a short movement of travel, the lower hole is for a long movement.

8. When replacing belts or mounting drive implements make sure all pulleys are in line.

9. BATTERY. Check electrolyte level periodically. If tractor has been in storage it may be necessary to recharge.

10. Your tractor is only as good as the service you give it. See your Wheel Horse Dealer for a thorough check-up after each season of use.

11. When replacing belts be sure to purchase genuine Wheel Horse belts, as these belts are specifically designed for each application.

(NOTE: Make sure all pulleys are in line.)

12. To raise seat/fender unit pull knob back. See Fig. 1. Seat should be latched before operating tractor.

SAFETY SUGGESTIONS

Recommended by Outdoor Power Equipment Institute

1. Know the controls and how to stop quickly — read the owners manual.

2. Do not allow children to operate machine; nor adults to operate it without proper instruction.

3. Clear work area of objects which might be picked up and thrown.

4. Disengage all clutches and shift into neutral before starting motor. Keep hands, feet, and clothing away from power driven parts.

5. Do not carry passengers. Keep children and pets a safe distance away.

6. Never direct discharge of any material toward bystanders, nor allow anyone near machine while in operation.

7. Disengage power to attachment (s) and stop motor before leaving operator position.

8. Take precautions when leaving machine unattended (to avoid accidental starting, rolling away, accidental dropping of any attachment, etc.)

9. Disengage power to any attachment whenever it is not in use, or when traveling from one work area to another.

10. Stay alert for holes and other hidden hazards. Know what is behind you, before backing up.

11. Beware of steep slopes; reduce speed on all side slopes and sharp turns, to prevent tipping or losing control.

12. Don't stop or start suddenly when going uphill or downhill.

13. Use care when pulling loads or using heavy equipment. Refer to owners manual.

14. Watch out for traffic when near roadways.

15. Handle gasoline with care — it is highly flammable.

a. Use approved gasoline container.

b. Never add gasoline to a running motor — fill tank out of doors wipe up spilled gasoline.

c. Replace gasoline cap securely.

d. Open doors if motor is run in garage — exhaust gases are dangerous.

17. Keep machine in good operating condition and keep safety devices in place. Use guards as instructed in owner's manual.

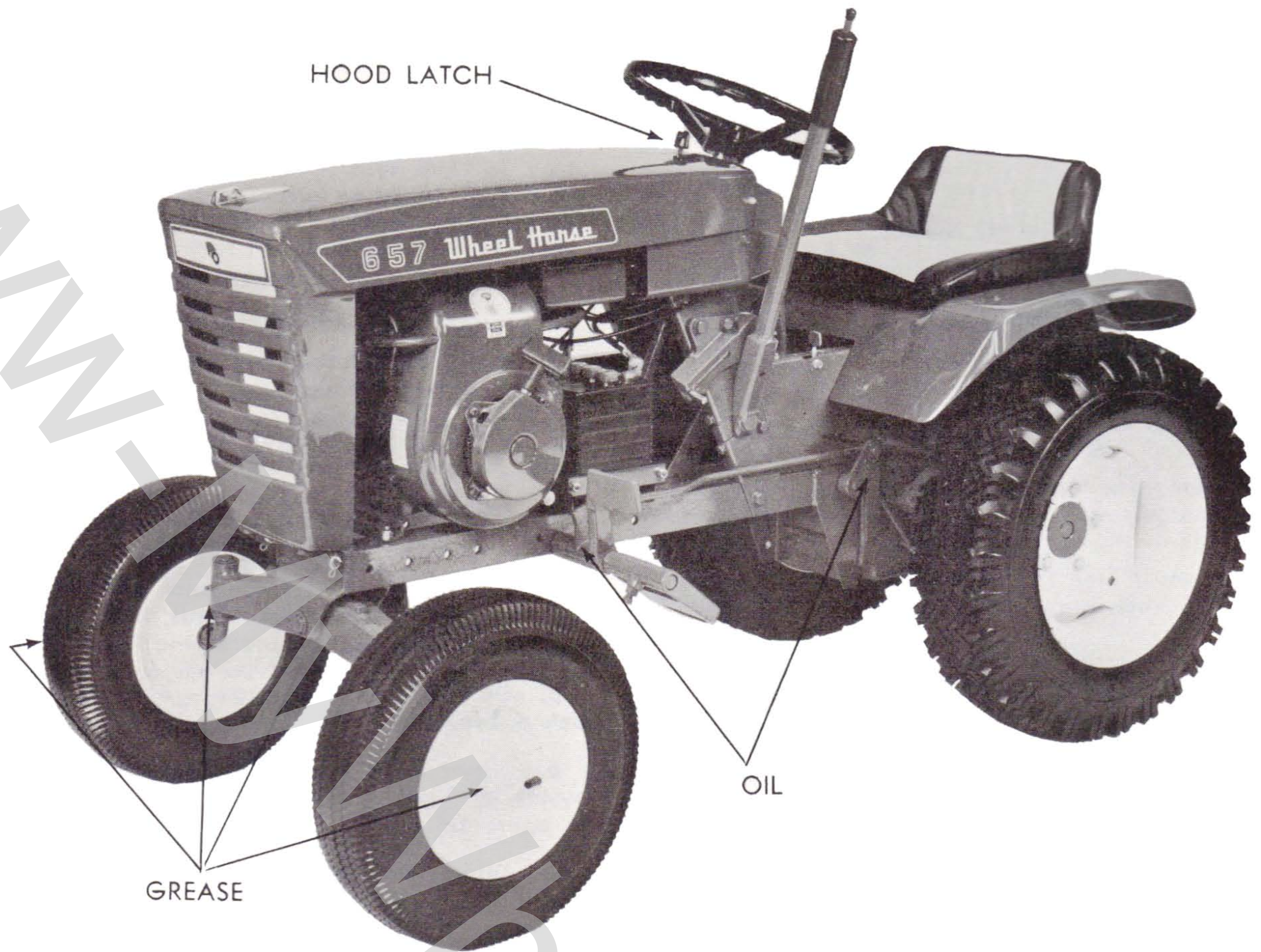
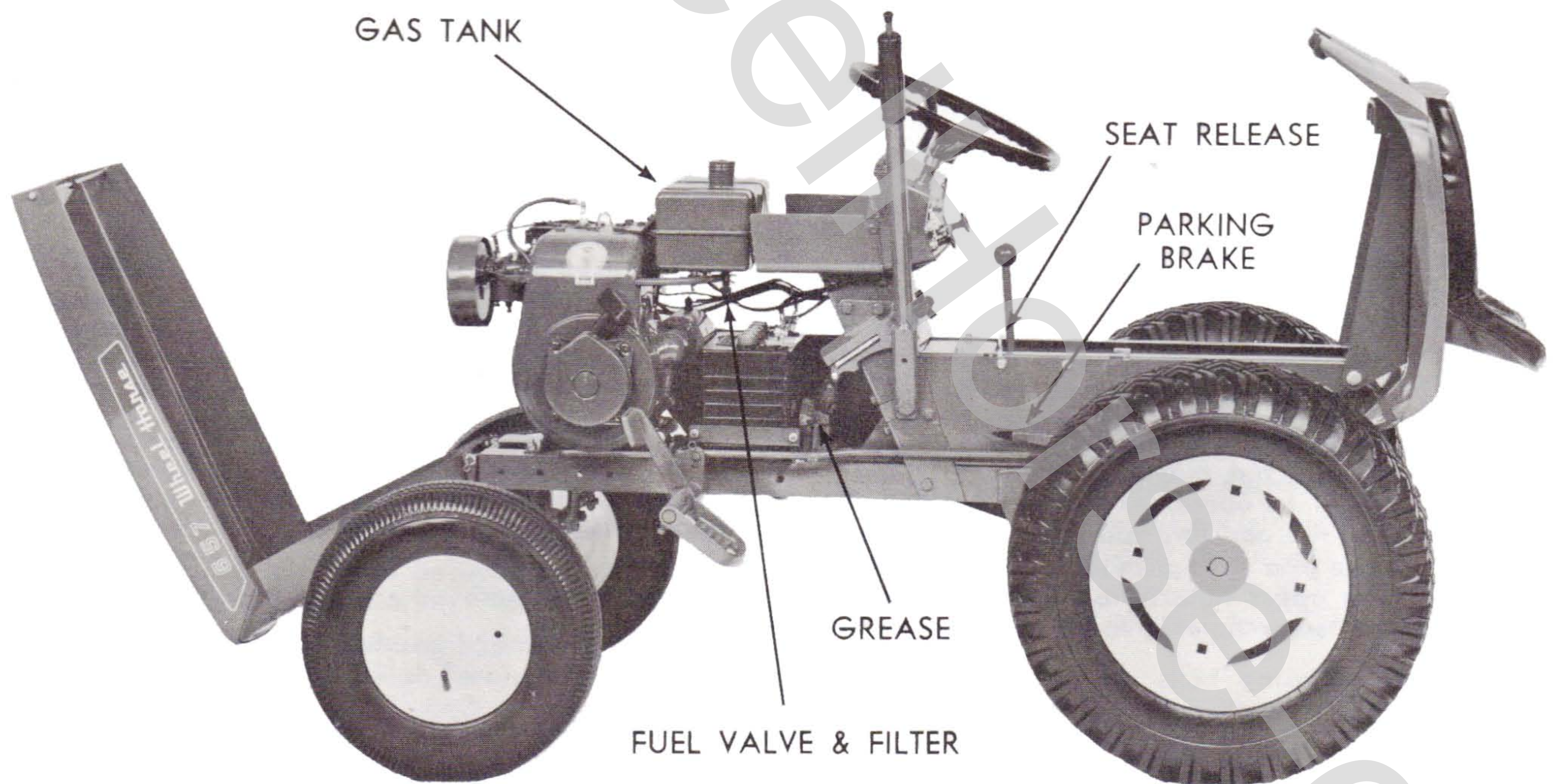
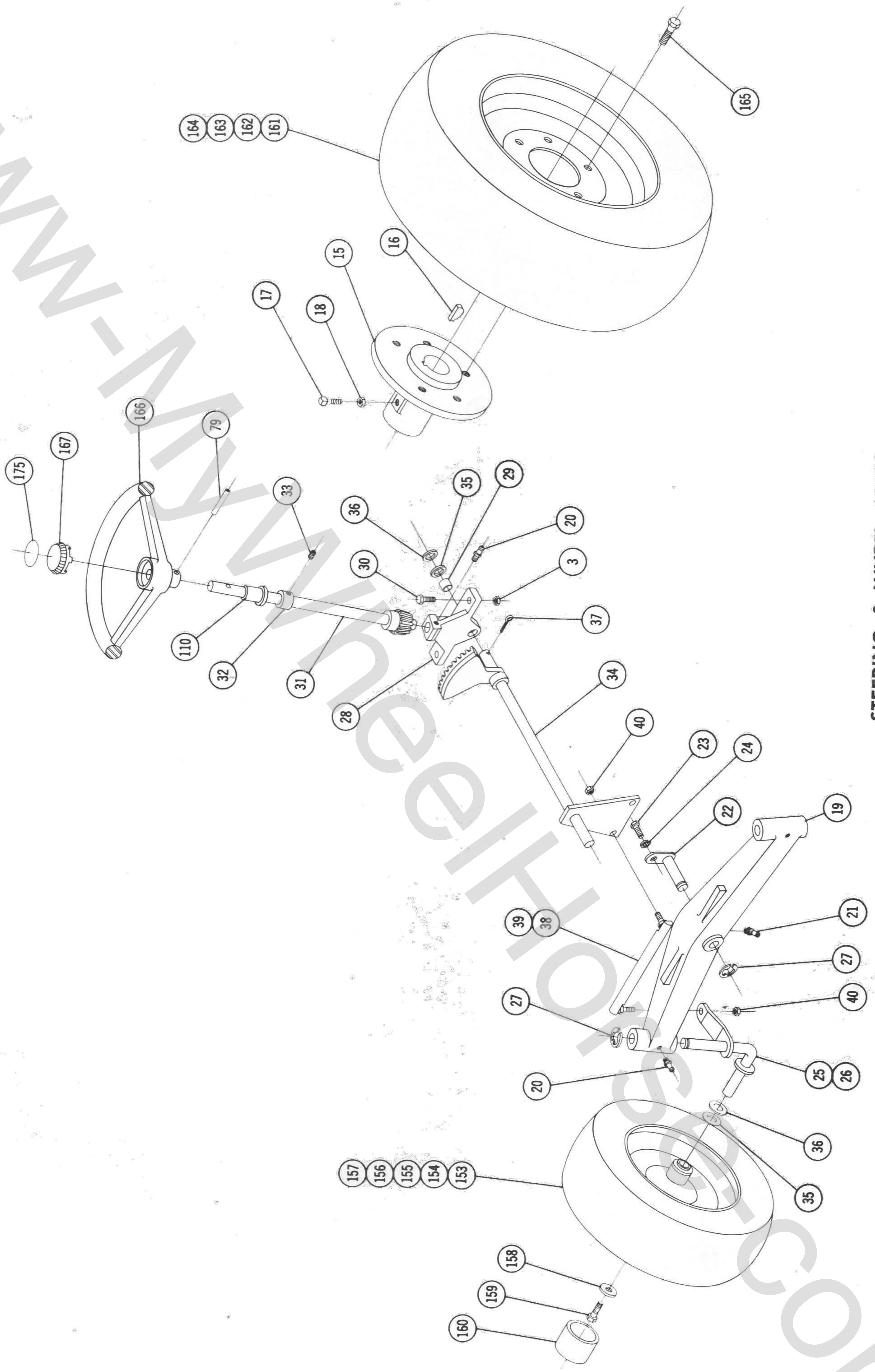


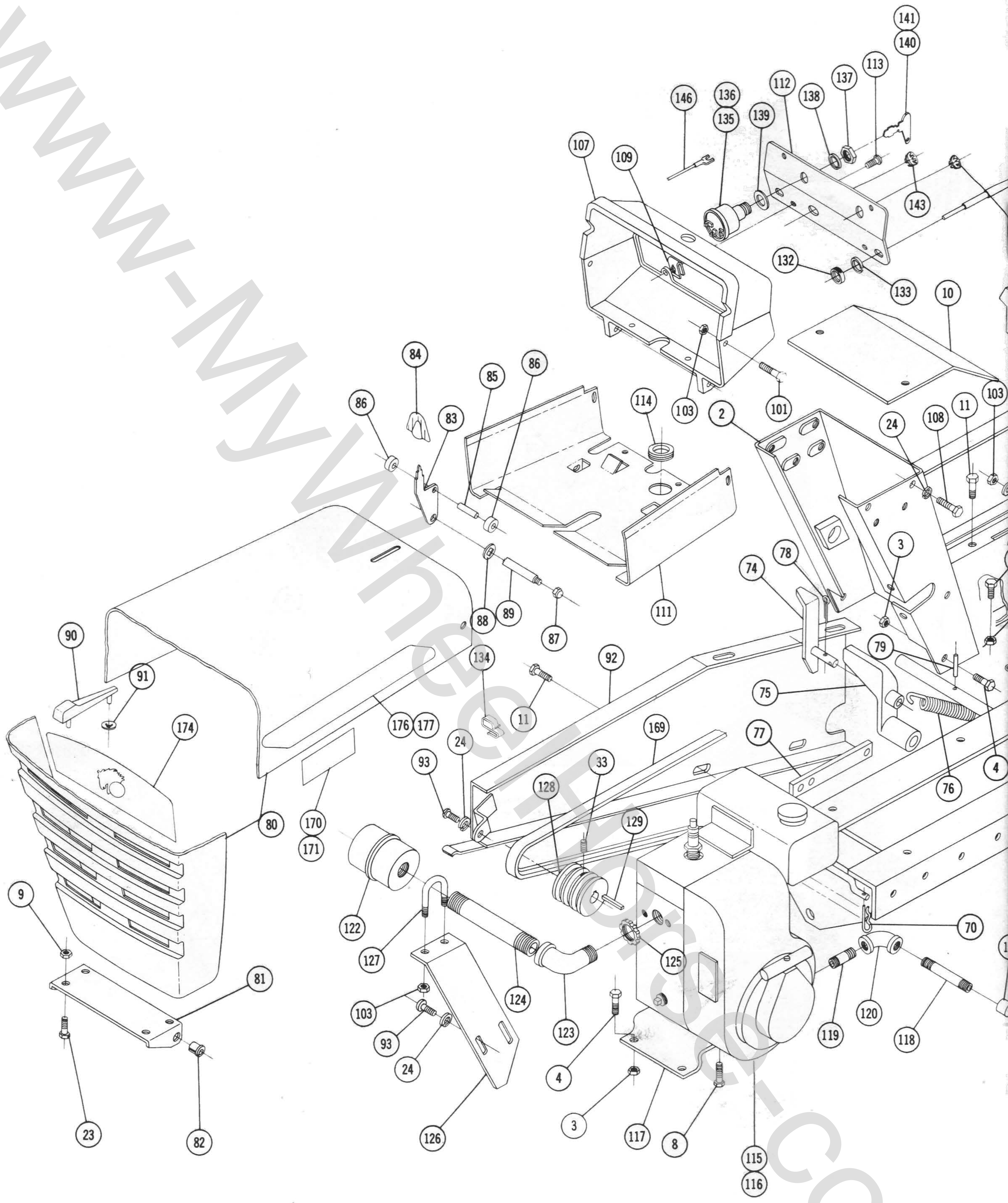
FIGURE 1

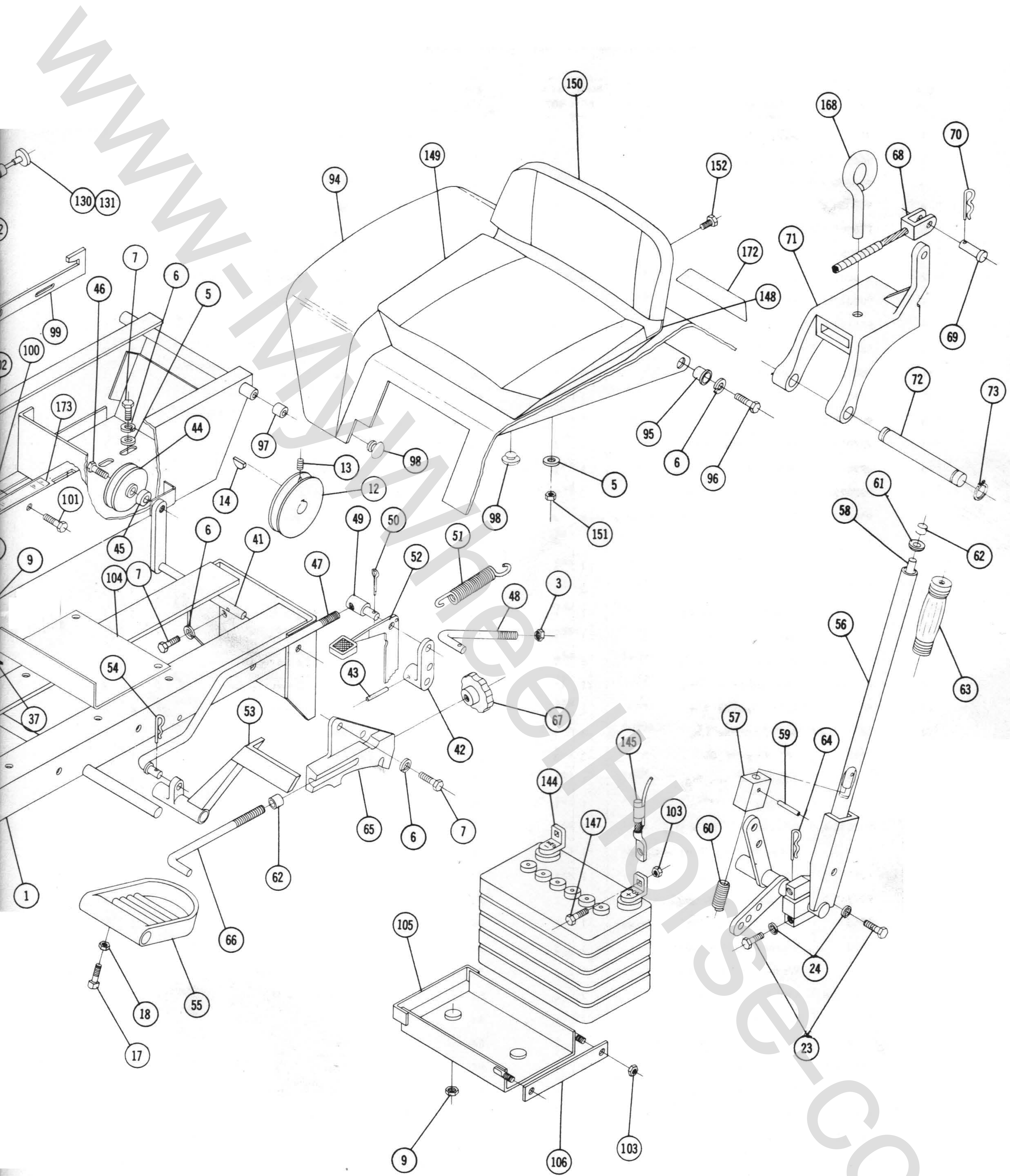




STEERING & WHEEL ASSY.

WWW.MANTRACOM.COM





ER & HOOD ASS'Y.

PARTS LIST for MODELS 607 & 657 LAWN and GARDEN TRACTORS

(Except Transmission — see page 11 for Transmission break down and Parts List)

When ordering parts always list Part No. and name of part.

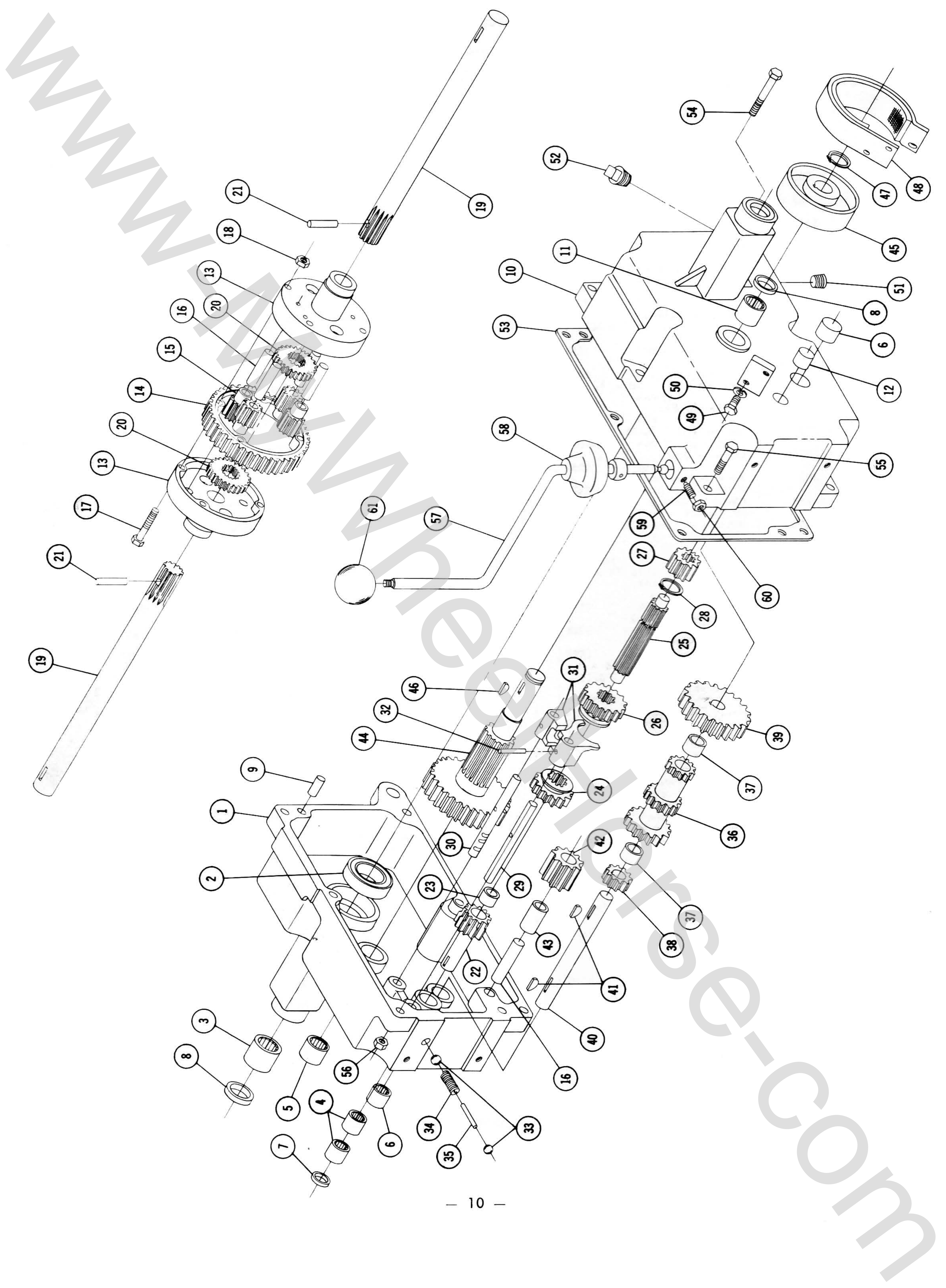
Ref. No.	Part No.	Description	Req'd. 657	Req'd. 607	Ref. No.	Part No.	Description	Req'd. 657	Req'd. 607
1	5634	Ass'y. Frame	1	1	46	1363	Bolt Hex Special $\frac{3}{8}$ -16 x $\frac{7}{8}$	1	1
2	5645	Ass'y. Hoodstand	1	1	47	2593	Rod — Clutch	1	1
3	915663-4	Nut $\frac{3}{8}$ -16 Elastic Stop	9	9	48	3935	Rod — Brake	1	1
4	908034-4	Bolt Hex $\frac{3}{8}$ -16 x 1	6	6	49	1861	Stud — Clutch Rod	1	1
5	920009-4	Washer $\frac{3}{8}$ SAE	4	4	50	932017-4	Cotter Pin $\frac{1}{8}$ x 1	2	2
6	920083-4	Lockwasher $\frac{3}{8}$ Plain	10	10	51	1014	Spring — Clutch	1	1
7	908032-4	Bolt Hex $\frac{3}{8}$ -16 x $\frac{3}{4}$	8	8	52	5544	Ass'y. Lever & Knob — Brake	1	1
8	908017-4	Bolt Hex $\frac{5}{16}$ -18 x $\frac{3}{4}$	2	2	53	2267	Pedal — Clutch	1	1
9	915112-6	Nut Nylok $\frac{5}{16}$ -18	8	6	54	933504-4	Hairpin	1	1
10	5622	Ass'y. Cover Plate	1	1	55	4421	Foot Rest	2	2
11	960151-4	Bolt Whizlock $\frac{1}{4}$ -20 x $\frac{1}{2}$	6	6	56	2266	Ass'y. Lift Lever	1	1
12	1611	Pulley	1	1	57	4438	Plunger	1	1
13	909849-5	Set Screw Nylok $\frac{1}{4}$ -20 x $\frac{5}{16}$	1	1	58	4439	Rod	1	1
14	937014	Key #9 Woodruff	1	1	59	933168	Roll Pin $\frac{5}{32}$ x $\frac{13}{16}$	1	1
15	4996	Hub — Wheel 5 Bolt	2	2	60	3624	Spring	1	1
16	937022	Key #15 Woodruff	2	2	61	3578	Guide — Plunger Rod	1	1
17	909554	Set Screw Square Head $\frac{3}{8}$ -16 x 1	4	4	62	3680	Cap — Plunger Rod	2	2
18	915113-4	Nut Hex $\frac{3}{8}$ -16	4	4	63	1000	Grip — Handle	1	1
19	5638	Axle Front	1	1	64	933506-4	Hairpin Cotter	1	1
20	1030	Fitting — Grease	3	3	65	5640	Quadrant	1	1
21	1481	Fitting — Grease 45°	1	1	66	2179	Rod Height Control	1	1
22	6216	Ass'y. Pin & Plate	1	1	67	5280	Knob — Height Control	1	1
23	908015-4	Bolt Hex $\frac{5}{16}$ -18 x $\frac{1}{2}$	8	8	68	3931	Ass'y. Cable — Lift	1	1
24	920082-4	Lockwasher $\frac{5}{16}$ Plain	11	11	69	932120-4	Pin — Clevis $\frac{1}{4}$ Dia.	2	2
25	5630	Ass'y. Spindle R.H.	1	1	70	933503-4	Hairpin Cotter	4	4
26	5631	Ass'y. Spindle L.H.	1	1	71	3926	Hitch	1	1
27	5618	"E" Ring $\frac{3}{4}$ Dia.	3	3	72	3988	Pin	1	1
28	6396	Support — Steering	1	1	73	936125	Snap Ring $\frac{3}{4}$ Shaft	2	2
29	6397	Bushing	1	1	74	6398	Ass'y. Trip Lever	1	1
30	908035-4	Bolt Hex $\frac{3}{8}$ -16 x $1\frac{1}{4}$	2	2	75	4239	Pedal — Attachment Clutch	1	1
31	6567	Ass'y. Steering Shaft — Upper	1	1	76	5714	Spring	1	1
32	1085	Collar	1	1	77	5385	Link	1	1
33	909848-5	Set Screw $\frac{1}{4}$ -20 x $\frac{1}{4}$ Nylok	2	2	78	932025-4	Cotter Pin $\frac{5}{32}$ x 1	2	2
34	6565	Ass'y. Steering Shaft — Lower	1	1	79	933213	Roll Pin $\frac{1}{4}$ x 1	2	2
35	5210	Washer — Shim (.015)	3	3	80	5465	Ass'y. Hood	1	1
36	1278	Washer — Shim (.050)	3	3	81	5455	Bracket — Hood Hinge	1	1
37	932035-4	Cotter Pin $\frac{3}{16}$ x $1\frac{1}{4}$	2	2	82	5457	Bushing — Nylon	2	2
38	5628	Ass'y. Ball Joint R.H.	1	1	83	5467	Lever — Hood Latch	1	1
39	5629	Ass'y. Ball Joint L.H.	1	1	84	5469	Knob	1	1
40	915002-6	Nut Nylok $\frac{3}{8}$ -24	4	4	85	933182	Roll Pin $\frac{3}{16}$ x $\frac{5}{8}$	1	1
41	3950	Ass'y. Idler Arm & Shaft	1	1	86	5468	Roller — Steel	2	2
42	4899	Arm — Clutch Rod Pivot	1	1	87	915902-4	Nut Low Crown #10-24	2	2
43	933158	Roll Pin $\frac{1}{8}$ x $1\frac{1}{4}$	1	1	88	5466	Speed Nut $\frac{1}{4}$ Dia. Push On	2	2
44	1623	Pulley	1	1	89	5522	Rod — Hood Latch	1	1
45	1536	Bushing	1	1	90	5438	Ornament — Hood Latch	1	1

PARTS LIST for MODELS 607 & 657 LAWN and GARDEN TRACTORS

(Except Transmission — see page 11 for Transmission break down and Parts List)

When ordering parts always list Part No. and name of part.

Ref. No.	Part No.	Description	Req'd. 657	Req'd. 607	Ref. No.	Part No.	Description	Req'd. 657	Req'd. 607
91	5437	Speed Nut $\frac{1}{8}$ Dia. Push-On	2	2	135	6890	Ass'y. Switch — Ignition	0	1
92	5308	Ass'y. Belt Guard	1	1	136	4987	Ass'y. Switch — Ignition	1	0
93	1432	Screw Round Head $\frac{5}{16}$ -24 x $\frac{1}{2}$	3	3	137	4882	Nut Hex $\frac{5}{8}$ -32 Special	1	1
94	5661	Ass'y. Fender	1	1	138	920160-4	Lockwasher $\frac{5}{8}$ Internal Tooth	1	1
95	5666	Bushing — Nylon	2	2	139	920215-4	Washer — Spacer	1	1
96	908182-4	Bolt Hex $\frac{3}{8}$ -24 x $\frac{7}{8}$	2	2	140	4989	Key — Ignition	2	0
97	4937	Spacer	2	2	141	3668	Key — Ignition	0	2
98	5667	Bumper — Rubber	4	4	142	935113	Plug Button $\frac{29}{32}$ Hole	1	1
99	5695	Latch	1	1	143	5506	Plug Button $\frac{25}{32}$ Hole	1	1
100	MW-4404	Spring Washer	2	2	144	3653	Battery	1	0
101	960152-4	Bolt Whizlock $\frac{1}{4}$ -20 x $\frac{5}{8}$	6	6	145	5647	Wiring Harness	1	0
102	920007-4	Washer $\frac{1}{4}$ SAE	2	2	146	4434	Wire — Switch To Ground	0	1
103	915111-6	Nut — Nylok $\frac{1}{4}$ -20	12	10	147	908002-4	Bolt Hex $\frac{1}{4}$ -20 x $\frac{5}{8}$	2	0
104	6825	Cover — Dust	1	1	148	7018	Ass'y. Seat Base	1	1
105	4953	Ass'y. Battery Box	1	0	149	7019	Cushion — Seat	1	1
106	4958	Clamp — Battery	1	0	150	7020	Cushion — Back	1	1
107	5450	Housing — Control Panel	1	1	151	915113-6	Nut — Nylok $\frac{3}{8}$ -16	2	2
108	908016-4	Bolt Hex $\frac{5}{16}$ -18 x $\frac{5}{8}$	4	4	152	7027	Bolt Hex $\frac{1}{4}$ -20 x $\frac{1}{2}$	5	5
109	5442	Speed Nut #10-16 Thread	4	4	153	6389	Ass'y. Wheel, Tire & Tube	2	2
110	5409	Bushing — Nylon	1	1	154	5635	Wheel	2	2
111	5458	Support — Fuel Tank	1	1	155	4999	Bearing — Ball	4	4
112	5453	Panel — Control	1	1	156	1656	Tire 4.80/4.00 - 8	2	2
113	926308-4	Screw Self Tap #10-16 x $\frac{3}{4}$	4	4	157	1657	Tube	2	2
114	5439	Grommet — Rubber	1	1	158	2844	Washer — Wheel Retainer	2	2
115	6751	Ass'y. Engine Lauson — Electric	1	0	159	908033-6	Bolt $\frac{3}{8}$ -16 x $\frac{7}{8}$ Nylok	2	2
116	6750	Ass'y. Engine Lauson — Recoil	0	1	160	2816	Hub Cap	2	2
117	4416	Base — Engine	1	1	161	1667	Ass'y. Wheel, Tire & Tube	2	2
118	943317-4	Nipple $\frac{1}{4}$ Pipe x 4	1	1	162	1700	Wheel	2	2
119	4218	Nipple $\frac{1}{4}$ Pipe x $1\frac{1}{4}$	1	1	163	1662	Tire 6 x 12 Lawn & Garden	2	2
120	4216	Elbow $\frac{1}{4}$ Pipe x 90°	1	1	164	1654	Tube	2	2
121	4217	Cap $\frac{1}{4}$ Pipe	1	1	165	1004	Lug Bolt — Wheel $\frac{7}{16}$ -20	10	10
122	1739	Muffler	1	1	166	4983	Steering Wheel	1	1
123	1755	Elbow $\frac{3}{4}$ Pipe x 90°	1	1	167	2897	Insert	1	1
124	943358-4	Nipple $\frac{3}{4}$ Pipe x $3\frac{1}{2}$	1	1	168	1813	Tool Pin	1	1
125	1756	Locknut $\frac{3}{4}$ Pipe	1	1	169	1576	"V" Belt — Drive	1	1
126	5646	Brace — Exhaust	1	1	170	6959	Decal — 657	2	0
127	1240	U-Bolt	1	1	171	6958	Decal — 607	0	2
128	1621	Pulley — Engine	1	1	172	5604	Decal — Fender	1	1
129	1349	Key $\frac{1}{4}$ x $\frac{1}{4}$ x $1\frac{1}{2}$	1	1	173	6165	Decal — Seat Latch	1	1
130	5440	Ass'y. Control — Choke	1	1	174	6998	Decal — Grille	1	1
131	5171	Ass'y. Control — Throttle	1	1	175	4581	Decal — Steering Wheel	1	1
132	1364	Nut $\frac{5}{16}$ -18 Round	2	2	176	6996	Decal — Hood Trim R.H.	1	1
133	920127-4	Lockwasher $\frac{5}{16}$ Shake Proof	2	2	177	6997	Decal — Hood Trim L.H.	1	1
134	3023	Retainer — Cable	0	1					

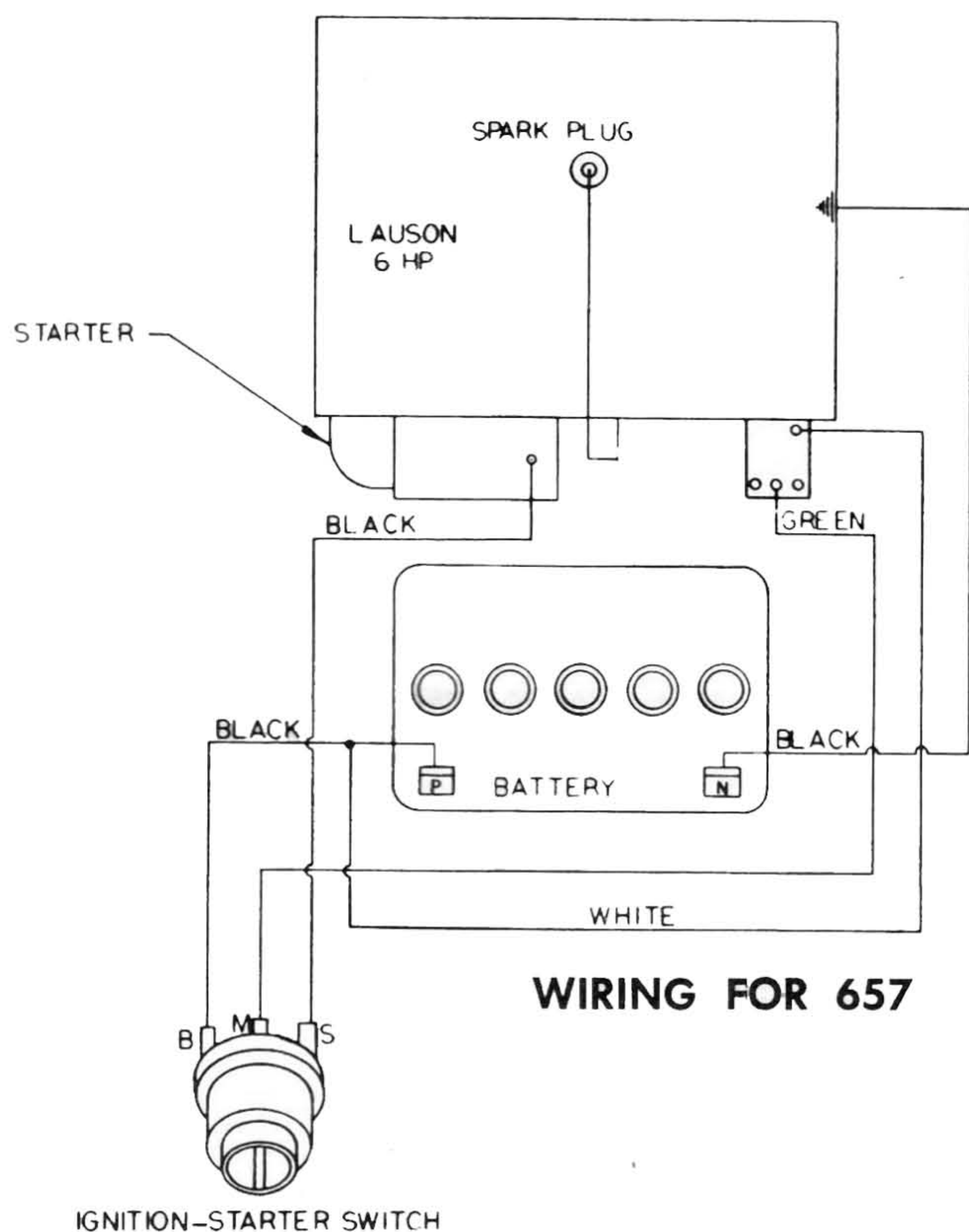


5053 TRANSMISSION PARTS LIST

(Order No. 5053 For Complete Transmission)

When ordering parts always list Part No. and name of Part.

Ref. No.	Part No.	Description	No. Req'd.	Ref. No.	Part No.	Description	No. Req'd.
1	3900	Case — R.H.	1	32	933156	Roll Pin 1/8 x 1	2
2	1533	Ball Bearing 1 1/2 I.D.	2	33	3517	Ball — Shift Stop	2
3	1528	Bearing — Needle	2	34	3518	Spring — Shift Stop	1
4	1508	Bearing — Needle 3/4 I.D.	2	35	5614	Pin — Shift Stop	1
5	1532	Bearing — Needle 1" I.D.	1	36	3525	Gear — Cluster	1
6	1529	Bearing — Needle 3/4 I.D.	2	37	1504	Bearing — Bronze 3/4 I.D.	2
7	1303	Seal — Oil 3/4 Shaft	1	38	3528	Gear — Reduction Pinion	1
8	1232	Seal — Oil 1" Shaft	3	39	3527	Gear — Reduction	1
9	3915	Pin — Dowel	2	40	3910	Shaft — Cluster Gear	1
10	3901	Case — L.H.	1	41	937014	Key #9 Woodruff	2
11	1530	Bearing — Needle 1" I.D.	1	42	4204	Gear — Reverse Idler	1
12	1531	Bearing — Needle 5/8 I.D.	1	43	1516	Bushing — Bronze 1/2 I.D.	1
13	3905	Case — Differential	2	44	3903	Gear — Brake Shaft	1
14	3906	Gear — Differential Bull	1	45	3902	Drum — Brake	1
15	4235	Gear — Differential Pinion	4	46	937022	Key #15 Woodruff	1
16	3909	Shaft	5	47	936131	Snap Ring 1" Shaft	1
17	908146	Bolt Hex 5/16-18 x 3 1/4	4	48	4437	Ass'y. Brake Band & Lining	1
18	1316	Nut Huglock 5/16-18	4	49	908002-4	Bolt Hex 1/4-20 x 5/8	2
19	3904	Axle — Rear	2	50	920081-4	Lockwasher 1/4 Dia.	2
20	3908	Gear — Axle	2	51	943460	Plug 1/4 Pipe	1
21	933217	Roll Pin 1/4 x 1 1/2	2	52	943420	Plug 3/8 Pipe	1
22	3522	Gear — Input	1	53	3912	Gasket	1
23	1518	Bearing — Needle 5/8 I.D.	1	54	908043-4	Bolt Hex 3/8-16 x 3 1/2	1
24	3523	Gear Hi & 2nd	1	55	908038-4	Bolt Hex 3/8-16 x 2	5
25	3907	Shaft Spline	1	56	915113-6	Nut Hex 3/8-16 Nylok	6
26	3524	Gear — Low & Reverse	1	57	5632	Ass'y. Shift Stick	1
27	3526	Gear — Pinion — Splined	1	58	3577	Boot — Shift Stick	1
28	936125	Snap Ring 3/4 Truarc	1	59	1239	Set Screw Dog Point 1/4-20 x 3/4	1
29	5615	Rail — Front Shift	1	60	915111-6	Nut Hex 1/4-20 Nylok	1
30	5616	Rail — Rear Shift	1	61	1001	Knob	1
31	3503	Fork — Shift	2				



WIRING FOR 657

SPECIFICATIONS

(Specifications subject to change without notice.)

Length Overall	61 inches
Wheelbase	41 1/4 inches
Width Overall	34 inches
Width at Front Wheels	33 1/2 inches
Height	37 inches
Height to Top of Hood	33 1/2 inches
Approx. Shipping Weight 657	398 lbs.
Approx. Shipping Weight 607	365 lbs.
Crop Clearance	7 1/4 inches
Frame Clearance	13 1/2 inches
Engine (4-cycle, single cylinder, air cooled)	6 H.P.
Engine Crankcase Oil Capacity	21 oz.
Fuel Capacity	4 quarts
Tires (front) 4.00-8 Pneumatic (16" wheel dia.)	
Tires (rear) 6.00 x 12" Pneumatic (22 1/2" wheel dia.)	
Speeds — 3 Forward to 6 mph. 1 Reverse to 2 1/2 mph.	
Turning radius (to outside of outside wheel)	6'

ATTACHMENTS AVAILABLE

607 and 657

36" ROTARY MOWER (RM-367)
32" ROTARY MOWER (RM-327)
32" SNOW THROWER (ST-326)
42" SICKLE BAR MOWER (SMS-425)
42" SNOW-DOZER (BD-4267)
32" DISK (DP-861)
8" PLOW (PP-458)
TRAILING CULTIVATOR (AC-7)
TWO SECTION CULTIVATOR (AC-675)
SPIKE TOOTH HARROW (PH-183)
2-WHEEL DUMP TRAILER (LTD-244)
4-WHEEL UTILITY WAGON (UW-645)
SPIKED DISK AERATOR (SC-152)
GRADER BLADE (MB-405)
GANG MOWER 60" CUTTING WIDTH REEL TYPE (SGM-503)
LAWN ROLLER (LR-322)

OPTIONAL ACCESSORIES

TIRE CHAINS (TC-12)
FRONT AND REAR WHEEL DISCS (WD-7)
WHEEL WEIGHTS — FRONT (WF-60)
WHEEL WEIGHTS — REAR (WW-126)
AUXILIARY HITCH (AH-63)
DUAL WHEELS (DW-62)

