

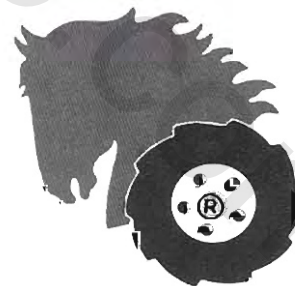
Wheel Horse[®]

LAWN AND GARDEN TRACTORS

OWNERS MANUAL

SIX SPEED TRACTOR

(MODELS
1067-1267)



WHEEL-HORSE PRODUCTS, INC.

SOUTH BEND, IND.

"Quality is Standard Equipment in Every Wheelhorse Product"

ASSEMBLY

A. The Tractor is shipped in one carton with the rear wheel and tire assembly, Part No. 5432, in a separate carton.

B. Mount rear wheels to the hubs using the ten lug bolts, Part No. 1004.

C. Mount front wheels to spindles using the $\frac{3}{8}$ -16 x $\frac{7}{8}$ Nylok bolts, Part No. 908033-6 and washers, Part No. 2844. There are two shim washers, one .015 thick and one .050 thick, in the loose part package for each wheel. Use one or both as shown on the exploded view drawing to provide a close fit. Press on hub caps.

D. Mount the steering wheel to steering shaft with the Woodruff Key, Part No. 937014, Special washer, Part No. 3775, and the $\frac{3}{8}$ -16 x $\frac{1}{2}$ bolt, Part No. 908030-4. Press on steering wheel insert.

BATTERY

The battery installed in the tractor is a dry charged battery. It is important that you properly prepare this battery to insure good service and long life.

1. Remove vent caps. Remove or destroy any sealing device which may have been used to close or restrict the vent openings.

2. Fill each cell of the battery to the proper level with the battery electrolyte.

NOTE: Temperature of battery and electrolyte at time of filling should be above 60° F. Never fill battery in the vehicle.

3. **BOOST CHARGE:** 15 amps. for 10 minutes or 7 amps. for 30 minutes. Adjust electrolyte level, if necessary, after charge.

4. **Install battery with battery posts toward the rear of tractor.** Start engine. After battery has been in service, add only approved water.

DO NOT ADD ACID.

TIRES

The front tires are 16x5.50-8 and should be inflated to 12 pounds of air pressure. The rear tires are 8.50 x 12 and should have 8 pounds of air pressure. The tires can also be filled with ballast if desired. Ordinarily this is not necessary as the weight of the operator will add sufficient weight for adequate traction.

BEFORE YOU START

There is **NO OIL** in the crankcase of the engine when shipped from the factory. **OIL** is recommended by the engine manufacturer and must be followed for best performance and long life. See Engine Manual.

Lubricate all grease fittings with a regular pressure gun lubricant every eight to ten hours of operation. Refer to Figure III for the location of grease fittings.

A light machine oil should be used on all moving parts to keep joints from wearing and squeaking.

Remove oil filler plug, located at the left rear side of the transmission, and fill to level of hole with a good grade of S.A.E. 90 oil (will require about 2 quarts).

The transmission should be checked after every 40 hours of use. The transmission should be drained once a year by removing plug on bottom to drain oil. Refill as above paragraph. This is a regular automotive type transmission with sliding gears and should have the same care as your car.

STARTING ENGINE

1. Before starting the engine fill gas tank (located under the hood) with a good grade of regular gas, and open valve on fuel filter located below the gas tank.

2. Set parking brake and place gear shift lever in neutral position.

3. Pull throttle lever $\frac{1}{2}$ way out and turn to the right to lock it in position. **Note:** The throttle control has a locking device. Turn the throttle control to the left to unlock, adjust to the desired position and turn to the right to lock.

4. Pull choke lever all the way out to choke engine. If engine is warm and has been running, choking may not be necessary.

5. The tractor has a key starter-switch. Turn key all the way to right to start engine.

6. When engine starts push choke in to off position and regulate throttle control by turning to the left to unlock and push in or out to desired speed.

7. Depress clutch pedal on left side of tractor before selecting desired gear range.

8. When starting tractor in winter it is desirable to depress clutch so engine does not have to turn transmission.

LOW AND HIGH RANGE SELECTOR

The low range drive provides a slower speed in each respective gear, by a 4 to 1 reduction in speed from high range. When the range selector lever is all the way to the left it is in low range, or all the way to the right it is in high range. (See instruction decal on cover plate.) Do not use a mid-point position on the range selector as neutral. Neutral position must be selected only with the standard transmission gearshift lever.

Low range is used for working heavy banked snow, tilling, high weeds, or hill sides. The following table shows the speeds available in each of the three forward gears and the reverse gear.

MILES PER HOUR

GEAR	HIGH	LOW
First	2.2	.5
Second	3.4	.8
Third	6.0	1.5
Reverse	2.8	.7

CLUTCHING

Don't force the gear shift lever if the gears do not immediately mesh. Depress clutch pedal all the way down and let up, then depress again and shift. To avoid sudden starts, release clutch pedal slowly. While in motion do not shift gears without depressing clutch pedal.

The clutch pedal also operates the brakes WHEN DEPRESSED ALL THE WAY DOWN. For this reason, you should depress the clutch pedal ONLY $\frac{2}{3}$ OF THE WAY DOWN WHEN SHIFTING while in motion. This clutch-brake pedal combination makes clutching automatic as you apply the brakes to stop. See Figure I.

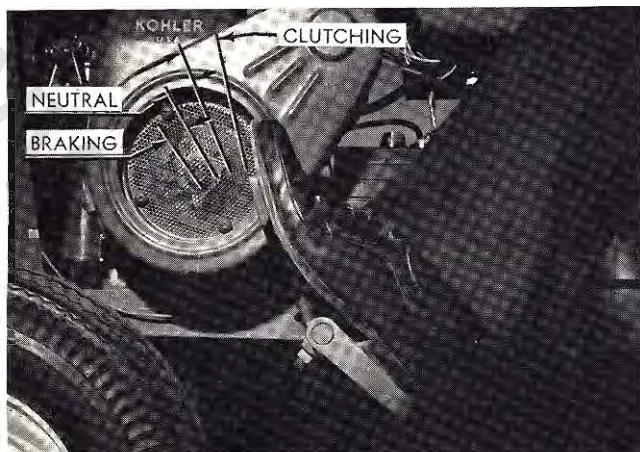


FIGURE I

PARKING BRAKE

The parking brake is located on the left side of the tractor as shown in Figure I. To set the parking brake depress the clutch-brake pedal as far as possible and push the parking brake down. To release the brake depress the clutch-brake pedal.

BRAKE ADJUSTMENT

The brake band, located on the left side of the transmission, brakes the transmission and in turn stops the wheels.

To adjust, depress clutch brake pedal and move parking brake lever forward into the engaged position. Tighten nut on brake rod until both rear wheels skid when tractor is pushed — parking brake engaged. Tighten nut another $\frac{1}{2}$ turn. The brake and parking brake are now properly adjusted. See Fig. II.

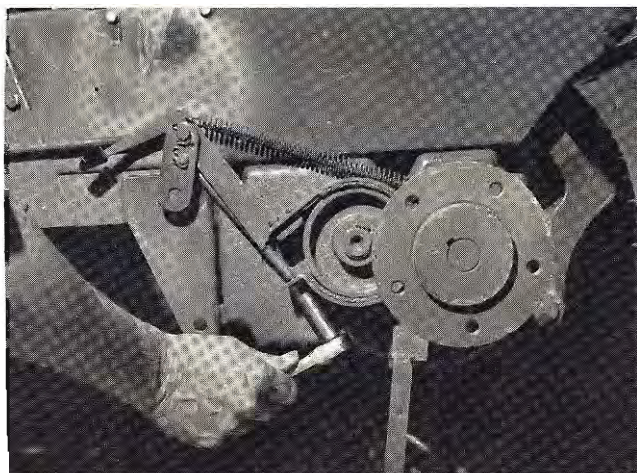


FIGURE II

LIFT HANDLE

The lift handle is used to lift or lower equipment used with the tractor. Depress the release button to lower the handle.

When the equipment is allowed to float, the forward travel of the handle can be limited by the adjustable stop. Turn the hand knob till the stop reaches the desired position.

ATTACHING TOOLS

Complete information on the assembly, attachment, operation and service of the many attaching tools will be provided with each attachment.

CARE OF TRACTOR

1. Keep tractor greased and oiled regularly. Refer to Fig. III for the location of grease fittings. Check transmission and engine case oil levels.
 2. Keep engine air cleaner clean. This will add to engine life.
 3. Keep tires properly inflated. See previous instructions.
 4. Keep tractor covered and in a dry place when not in use.
 5. Keep grass and dirt out of engine cowlings as these will stop the flow of air and decrease engine life.
 6. LIGHTS. To replace light bulbs remove the four screws holding the lens, push down and rotate the bulb to the left, it will then come out. Replace with #1156 bulb. The lights may go off when the hood is raised, this is because it loses ground contact.
 7. CLUTCH-BRAKE PEDAL ADJUSTMENT. The clutch-brake pedal rod may be turned in or out to adjust the pedal to operator's desired position. Remove pin from rod and turn rod in or out for adjustment. There are also two holes in the pedal to adjust for travel. The upper hole is for a short movement of travel, the lower hole is for a long movement.
 8. When replacing belts or mounting drive implements make sure all pulleys are in line.
 9. BATTERY. Check electrolyte level periodically. If tractor has been in storage it may be necessary to recharge.
 10. Your tractor is only as good as the service you give it. See your Wheel Horse Dealer for a thorough check-up after each season of use.
 11. When replacing belts be sure to purchase genuine Wheel Horse belts, as these belts are specifically designed for each application.
- (NOTE: Make sure all pulleys are in line.)
12. To raise seat/fender unit pull knob back. See Fig. III. Seat should be latched before operating tractor.

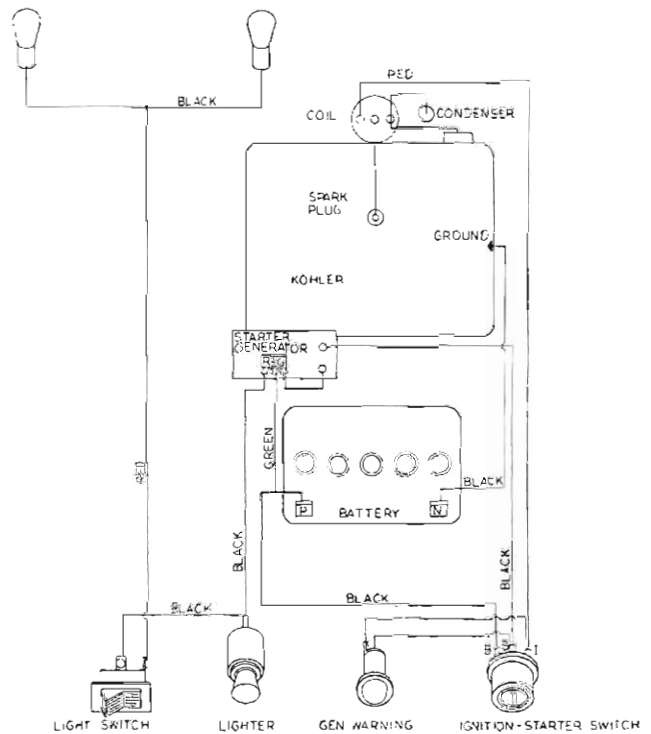
SAFETY SUGGESTIONS

Recommended by Outdoor Power Equipment Institute

1. Know the controls and how to stop quickly — read the owners manual.
2. Do not allow children to operate machine; nor adults to operate it without proper instruction.
3. Clear work area of objects which might be picked up and thrown.
4. Disengage all clutches and shift into neutral before starting motor. Keep hands, feet, and clothing away from power driven parts.
5. Do not carry passengers. Keep children and pets a safe distance away.
6. Never direct discharge of any material toward bystanders, nor allow anyone near machine while in operation.
7. Disengage power to attachment (s) and stop motor before leaving operator position.
8. Take precautions when leaving machine unattended (to avoid accidental starting, rolling away, accidental dropping of any attachment, etc.)
9. Disengage power to any attachment whenever it is not in use, or when traveling from one work area to another.
10. Stay alert for holes and other hidden hazards. Know what is behind you, before backing up.
11. Beware of steep slopes; reduce speed on all side slopes and sharp turns, to prevent tipping or losing control.
12. Don't stop or start suddenly when going uphill or downhill.
13. Use care when pulling loads or using heavy equipment.
14. Watch out for traffic when near roadways.
15. Handle gasoline with care — it is highly flammable.

- a. Use approved gasoline container.
- b. Never add gasoline to a running motor — fill tank out of doors wipe up spilled gasoline.
- c. Replace gasoline cap securely.
- d. Open doors if motor is run in garage — exhaust gases are dangerous.

16. Keep machine in good operating condition and keep safety devices in place. Use guards as instructed in owner's manual.



WIRING DIAGRAM

WARRANTY

We warrant WHEEL HORSE PRODUCTS for ONE YEAR from date of purchase against defective parts and workmanship. We will replace, free of charge, any defective part, f.o.b. the factory. Wheel Horse Products, Inc., reserves the right to make changes or improvements upon its products without imposing any obligation upon itself to install the same upon its products that have been previously manufactured.

The engine and battery carry a separate warranty by the manufacturer. FOR ENGINE OR BATTERY SERVICE, CONTACT YOUR LOCAL ENGINE OR BATTERY SERVICE HEAD-QUARTERS.

All warranty claims, work, shipments, must be handled through your authorized Wheel Horse dealer.

NOTE: 90 Day Warranty for Commercial Use.

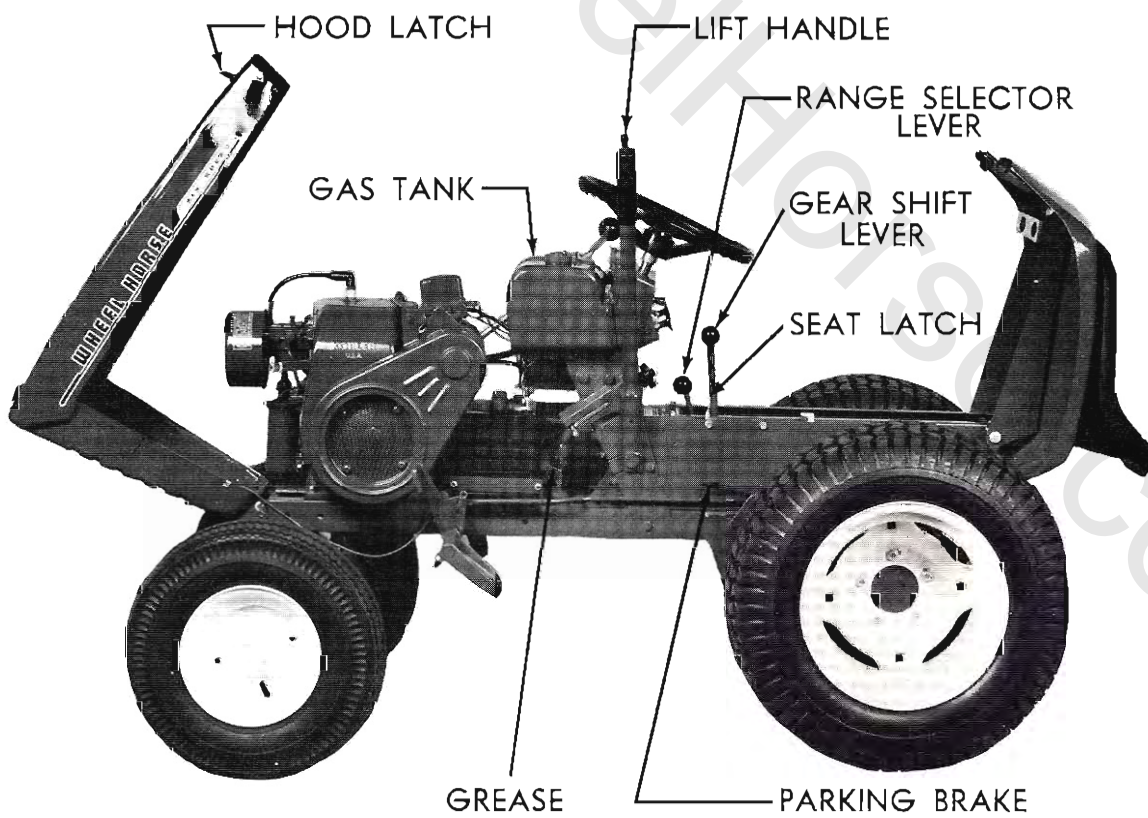
SPECIFICATIONS

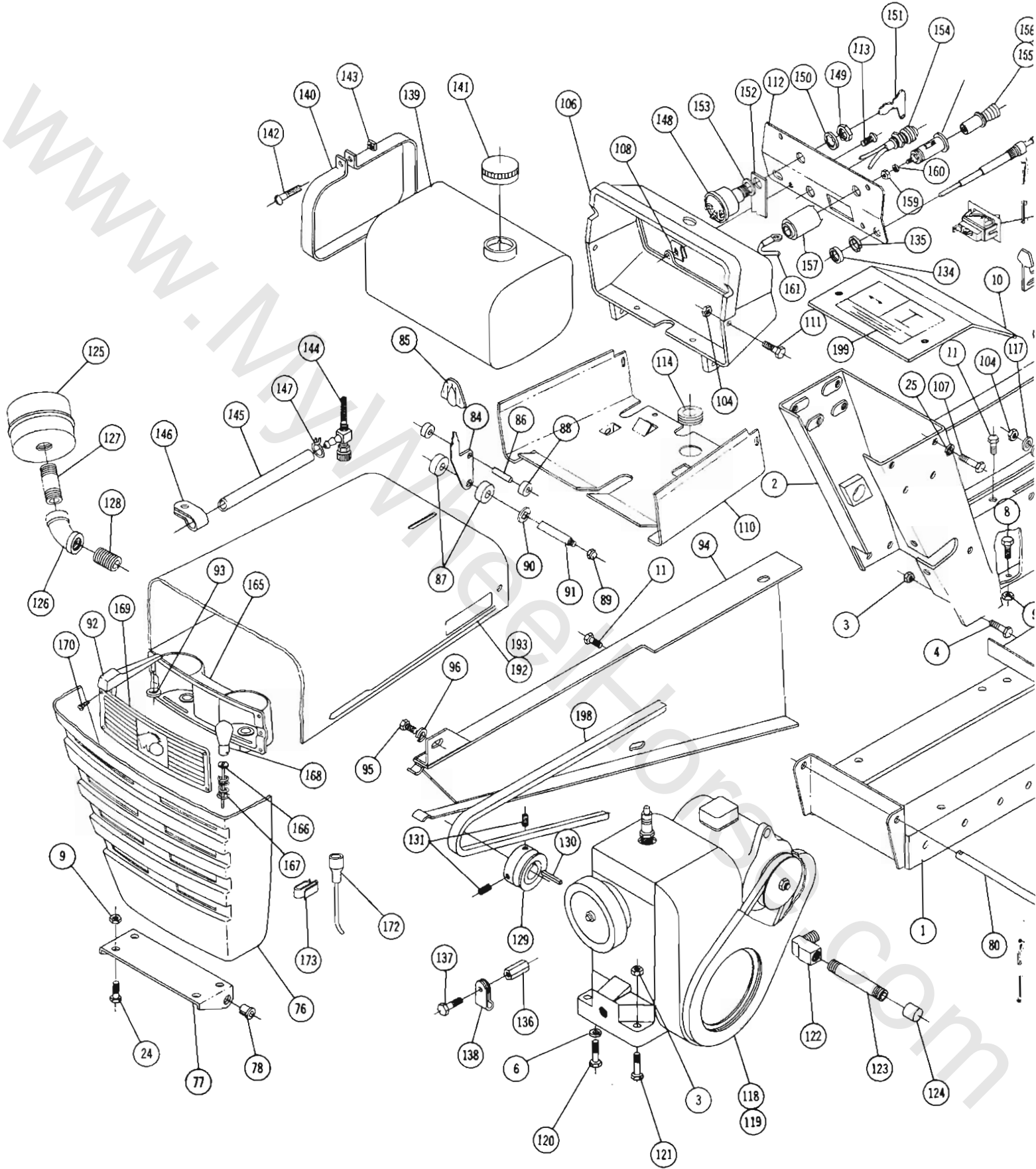
(Specifications subject to change without notice.)

Length Overall	65 inches
Wheelbase	45½ inches
Width Overall	36 inches
Width at Front Wheels	33½ inches
Height	40 inches
Height to Top of Hood	35 inches
Approx. Shipping Weight 1067	597 lbs.
Approx. Shipping Weight 1267	607 lbs.
Crop Clearance	7¼ inches
Frame Clearance	13½ inches
Engine (4-cycle, single cylinder, air cooled)	Electric Start
Engine Oil Capacity	5 pints
Fuel Capacity	6 quarts
Transmission Oil Capacity	2 quarts
Tires (front) 5.50-8 Pneumatic (16" wheel dia.)	
Tires (rear) Terra-Type 8.50 x 12" Pneumatic (23" wheel dia.)	
Turning Radius (to outside of outside wheel)	6' 9"

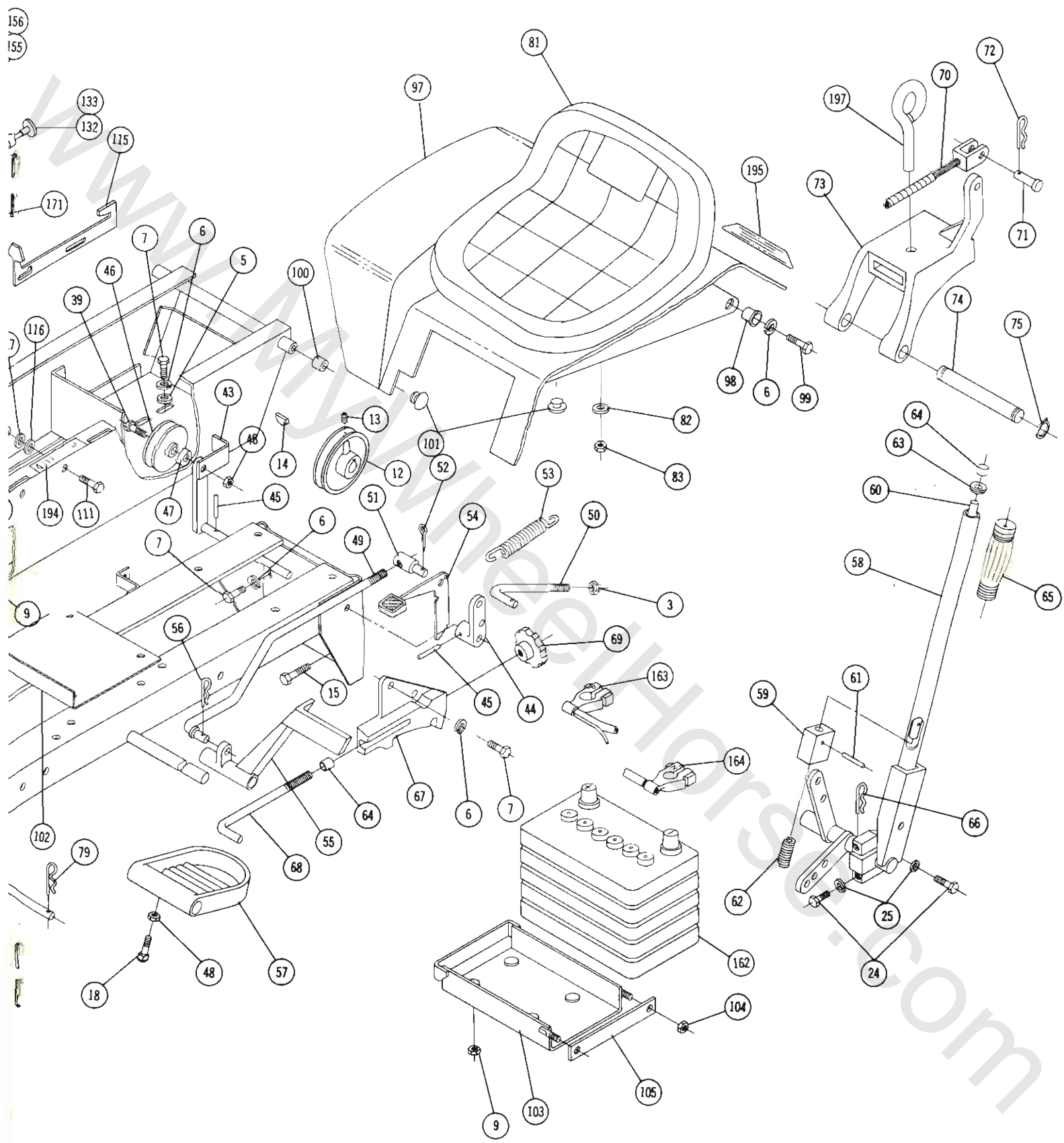


Figure III





MAIN FRAME, FENDE



SEAT & HOOD ASS'Y.

PARTS LIST for 1067 and 1267 LAWN and GARDEN TRACTOR

(See pages 11 and 12 for Transmission break down and Parts List)

When ordering parts always list Part No. and name of part.

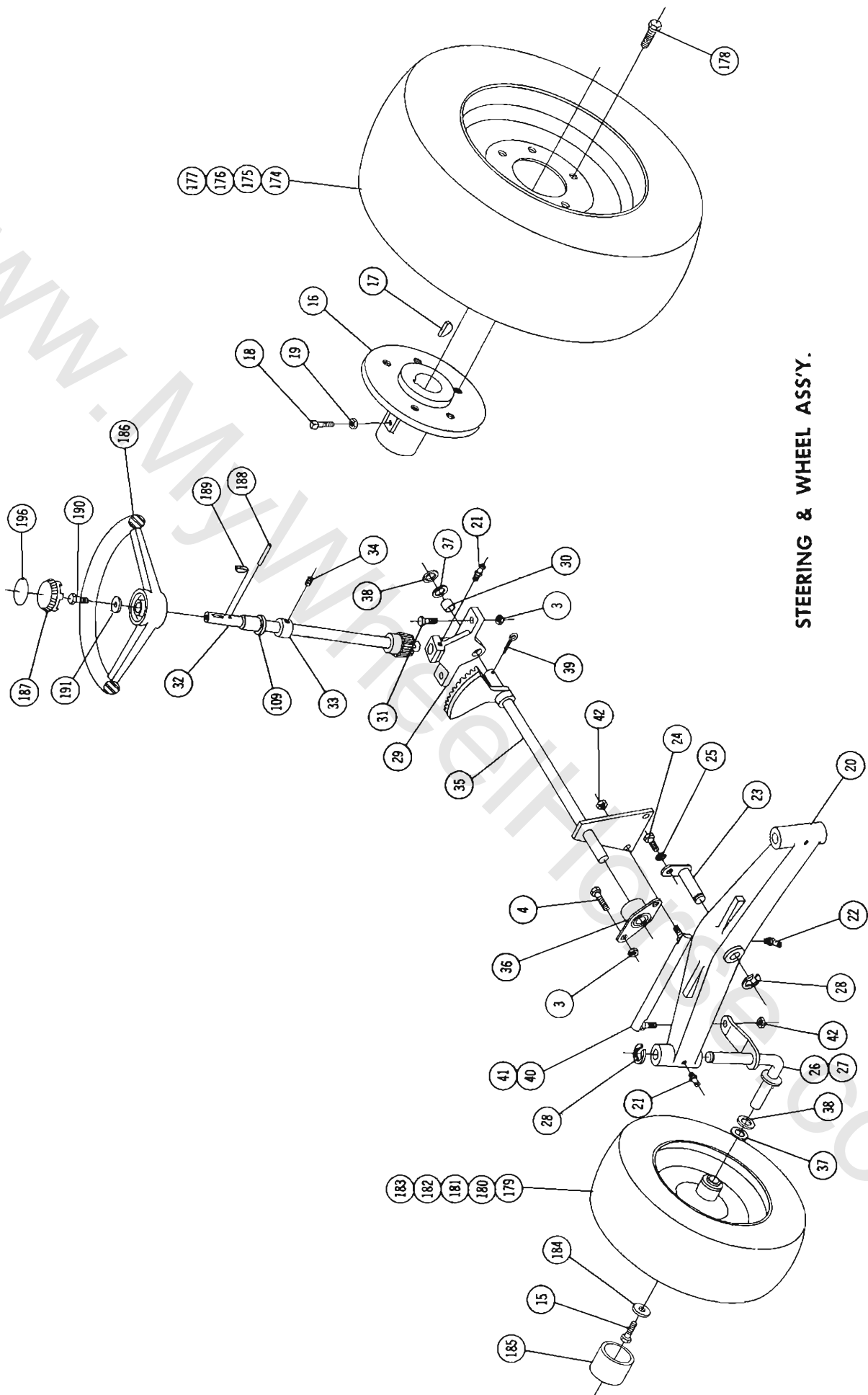
Ref. No.	Part No.	Description	No. Req'd.	Ref. No.	Part No.	Description	No. Req'd.
1	6456	Ass'y Frame	1	51	1861	Stud — Clutch Rod	1
2	6508	Ass'y Hoodstand	1	52	932017-4	Cotter Pin	2
3	915663-4	Nut $\frac{3}{8}$ -16 Elastic Stop	9	53	1014	Spring — Clutch	1
4	908034-4	Bolt Hex. $\frac{3}{8}$ -16 x 1	2	54	5544	Ass'y Lever & Knob — Brake	1
5	920009-4	Washer $\frac{3}{8}$ SAE	6	55	2267	Pedal — Clutch	1
6	920083-4	Lockwasher $\frac{3}{8}$ Plain	10	56	933504-4	Hair Pin	1
7	908032-4	Bolt Hex. $\frac{3}{8}$ -16 x $\frac{3}{4}$	6	57	4421	Footrest	2
8	908017-4	Bolt $\frac{3}{16}$ -18 x $\frac{3}{4}$	2	58	5448	Ass'y Lift Lever	1
9	915112-6	Nut $\frac{5}{16}$ -18 Nyllok	10	59	4438	Plunger	1
10	7220	Ass'y Cover Plate	1	60	5449	Rod	1
11	960151-4	Bolt $\frac{1}{4}$ -20 x $\frac{1}{2}$ Whizlock	4	61	933168	Roll Pin	1
12	7232	Pulley — Transmission	1	62	3624	Spring	1
13	909849-5	Set Screw $\frac{1}{4}$ -20 x $\frac{5}{16}$ Nyllok	1	63	3578	Guide — Plunger Rod	1
14	937010	Key — Woodruff $\frac{5}{32}$ x $\frac{5}{8}$	1	64	3680	Cap — Plunger Rod	2
15	908033-6	Bolt $\frac{3}{8}$ -16 x $\frac{7}{8}$ Nyllok	4	65	1000	Grip — Handle	1
16	6465	Hub — Wheel	2	66	933506-4	Hair Pin	1
17	937022	Key # 15 Woodruff	2	67	5640	Quadrant	1
18	909554	Set Crew Square Head $\frac{3}{8}$ -16 x 1	4	68	2179	Rod — Height Control	1
19	915236-4	Nut Hex. $\frac{3}{8}$ -16 Jam	2	69	5280	Knob — Height Control	1
20	5638	Axle — Front	1	70	3931	Ass'y Cable — Lift	1
21	1030	Fitting — Grease	3	71	932120-4	Pin — Clevis $\frac{1}{4}$ Dia.	2
22	1481	Fitting — Grease 45°	1	72	933503-4	Hair Pin Cotter	2
23	6216	Ass'y Pin & Plate	1	73	3926	Hitch	1
24	908015-4	Bolt Hex $\frac{5}{16}$ -18 x $\frac{1}{2}$	8	74	3988	Pin — Hitch	1
25	920082-4	Lockwasher $\frac{5}{16}$ Plain	8	75	936125	Snap Ring $\frac{3}{4}$ Shaft	2
26	5630	Ass'y Spindle R.H.	1	76	7230	Ass'y Hood	1
27	5631	Ass'y Spindle L.H.	1	77	5455	Bracket — Hood Hinge	1
28	5618	"E" Ring $\frac{3}{4}$ Dia.	3	78	5457	Bushing — Nylon	2
29	6396	Support — Steering	1	79	933503-4	Hair Pin Cotter	2
30	6397	Bushing	1	80	6490	Rod — Hood Pivot	1
31	908035-4	Bolt Hex. $\frac{3}{8}$ -16 x $1\frac{1}{4}$	2	81	7070	Seat — Complete	1
32	6943	Ass'y Shaft — Upper Steering	1	82	920008-4	Washer $\frac{5}{16}$ SAE	4
33	1085	Collar	1	83	915662-4	Nut $\frac{5}{16}$ -18 Elastic Stop	4
34	909848-5	Set Screw $\frac{1}{4}$ -20 x $\frac{1}{4}$ Nyllok	1	84	5467	Lever — Hood Latch	1
35	6469	Ass'y Steering Shaft — Lower	1	85	5469	Knob	1
36	6472	Ass'y Bearing & Housing	1	86	933182	Roll Pin $\frac{3}{16}$ x $\frac{5}{8}$	1
37	5210	Washer — Shim (.015)	3	87	5505	Roller — Rubber	2
38	1278	Washer — Shim (.050)	3	88	5468	Roller — Steel	2
39	932035-4	Cotter Pin $\frac{3}{16}$ x $1\frac{1}{4}$	2	89	915932-4	Nut — High Crown # 10-24	2
40	5628	Ass'y Ball Joint R.H.	1	90	5466	Speed Nut Push On $\frac{1}{4}$ Dia.	2
41	5629	Ass'y Ball Joint L.H.	1	91	5522	Rod — Hood Latch	1
42	915002-6	Nut $\frac{3}{8}$ -24 Nyllok	4	92	5438	Ornament — Hood	1
43	6951	Ass'y Idler Arm & Shaft	1	93	5437	Speed Nut — Push On $\frac{1}{8}$ Dia.	2
44	4899	Arm — Clutch Rod Pivot	1	94	6509	Ass'y Belt Guard	1
45	933158	Roll Pin $\frac{1}{8}$ x $1\frac{1}{4}$	2	95	908045-4	Screw Hex. $\frac{7}{16}$ -14 x $\frac{3}{4}$	1
46	1623	Pulley — Idler	1	96	920084-4	Lockwasher — Plain $\frac{7}{16}$	1
47	1536	Bushing	1	97	5660	Ass'y Fender	1
48	915113-6	Nut — Nyllok $\frac{3}{8}$ -16	3	98	5666	Bushing — Nylon	2
49	2593	Rod — Clutch	1	99	908182-4	Bolt $\frac{3}{8}$ -24 x $\frac{7}{8}$ Hex.	2
50	3935	Rod — Brake	1	100	4937	Spacer	2

PARTS LIST for 1067 and 1267 LAWN and GARDEN TRACTOR

(See pages 11 and 12 for Transmission break down and Parts List)

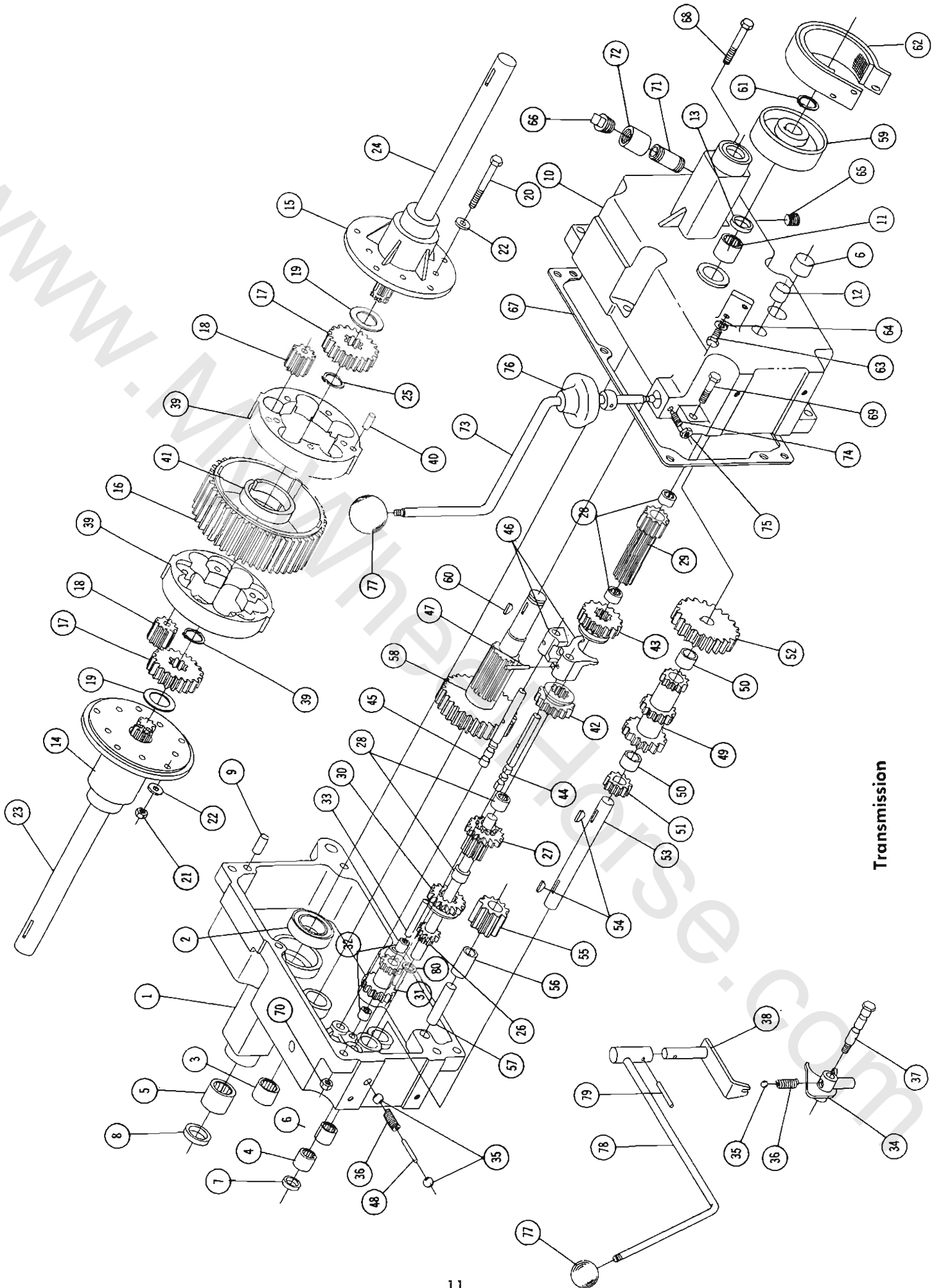
When ordering parts always list Part No. and name of part.

Ref. No.	Part No.	Description	No. Req'd.	Ref. No.	Part No.	Description	No. Req'd.
101	5667	Bumper — Rubber	4	151	7262	Key — Ignition	2
102	6825	Cover — Dust	1	152	5451	Insulator — Switch	1
103	6477	Ass'y Battery Box	1	153	920215-4	Washer — Spacer	1
104	915111-6	Nut — Nylok ¼-20	8	154	5423	Ass'y Lamp — Generator	1
105	6480	Clamp — Battery	1	155	5480	Ass'y Cigar Lighter — Complete	1
106	5450	Housing — Control Panel	1	156	5481	Ass'y Knob & Plug	1
107	908016-4	Bolt Hex. ⅝-18 x ⅝	4	157	5483	Shell	1
108	5442	Speed Nut #10-16 Thread	4	158	5482	Ass'y Socket	1
109	5409	Bushing — Nylon	1	159	915562	Nut #8-32 Brass	2
110	5458	Support — Fuel Tank	1	160	920078-4	Lockwasher #8	1
111	960152-4	Bolt — Whizlock ¼-20 x ⅝	6	161	5484	Ass'y Wire	1
112	7222	Panel — Complete	1	162	6486	Battery	1
113	926308-4	Screw — Selftap #10-16 x ¾	4	163	6487	Wiring Harness	1
114	5439	Grommet — Rubber	1	164	6488	Wire Battery To Ground	1
115	5695	Latch	1	165	7223	Ass'y Reflector Housing & Socket	1
116	MW-4404	Washer — Spring ⅜ Dia.	2	166	7226	Ass'y Wire and Terminal	2
117	920007-4	Washer ¼ SAE	2	167	7227	Spring	2
118	6481	Engine 10 H.P. (1067 Tractor)	1	168	7228	Bulb (#1156)	2
119	6482	Engine 12 H.P. (1267 Tractor)	1	169	7075	Lens	1
120	908034-4	Bolt Hex. ⅜-16 x 1	2	170	7229	Screw #6-32 x ⅜ Special	4
121	908036-4	Bolt Hex. ⅜-16 x 1½	2	171	7184	Switch	1
122	5222	Elbow 90° Special	1	172	7185	Harness — Lights	1
123	94333-4	Nipple ⅜ Pipe x 4	1	173	3023	Clip	2
124	5224	Cap ⅜ Pipe	1	174	5432	Ass'y Wheel & Tire — Rear	2
125	2873	Muffler	1	175	5433	Wheel 12 x 7JA	2
126	3939	Elbow 1" x 45	1	176	5434	Tire	2
127	943367-4	Nipple 1" Pipe x 2½	1	177	5435	Valve	2
128	3947	Nipple 1" Close Pipe	1	178	1004	Lug Bolt — Wheel ⅞-20	10
129	6483	Pulley — Engine	1	179	5637	Ass'y Wheel, Tire & Tube — Front	2
130	6507	Key ¼ x ¼ x ½"	1	180	5635	Wheel	2
131	909862-5	Set Screw ⅝-18 x ⅝	2	181	4999	Bearing — Ball	4
132	5170	Ass'y Control — Choke	1	182	5636	Tire — 16 x 5.50 - 8	2
133	6484	Ass'y Control — Throttle	1	183	5512	Tube	2
134	1364	Nut — Round ⅞	2	184	2844	Washer	2
135	920127-4	Lockwasher — Shake Proof ⅞	2	185	2816	Hubcap	2
136	5431	Nut — Hex. Special ¼-20	1	186	4875	Steering Wheel	1
137	1391	Screw — Sems ¼-20 x ⅜	1	187	2897	Insert	1
138	2879	Clip	1	188	933188	Roll Pin ⅜ x 1	1
139	5417	Tank — Fuel	1	189	937014	Key — Woodruff #9	1
140	5459	Clamp — Tank	1	190	908030-4	Bolt Hex. ⅜-16 x ½	1
141	5186	Cap — Fuel Tank	1	191	3775	Washer — Special	1
142	909059-4	Bolt Round Head ¼-20 x 1¼	1	192	7186	Decal — Hood Trim R.H.	1
143	915515-4	Nut — Square ¼-20	1	193	7187	Decal — Hood Trim L.H.	1
144	4941	Ass'y Valve & Filter	1	194	6165	Decal — Seat Latch	1
145	6485	Hose — Fuel	1	195	5604	Decal — Attachment	1
146	4256	Clip — Fuel	2	196	4581	Decal — Steering Wheel	1
147	950153	Clamp — Corbin ⅞ Dia.	2	197	1813	Tool Pin	1
148	7263	Ass'y Switch — Ignition	1	198	1586	"V" Belt	1
149	7261	Nut — Hex. Special ⅝-32	1	199	7183	Decal — Shift Pattern	1
150	920159-4	Lockwasher ⅞ Dia. Int. Tooth	1				



STEERING & WHEEL ASSY.

WWW.AZSAP.COM



Transmission

5060 TRANSMISSION PARTS LIST

*(Order No. 5060 for Complete Transmission)

When ordering parts always list Part No. and Name of Part.

Ref. No.	Part No.	Description	No. Req'd.	Item No.	Part No.	Description	No. Req'd.
1	7066	Case — R.H.	1	41	7235	Spring — Cylindrical	1
2	1533	Bearing Ball 1½ I.D.	2	42	5173	Gear — Hi and 2nd	1
3	1532	Bearing — Needle 1" I.D.	1	43	5174	Gear — Low and Reverse	1
4	1542	Bearing — Needle 5/8" I.D.	1	44	5615	Rail — Front Shift	1
5	1526	Bearing — Needle 1½" I.D.	2	45	5616	Rail — Rear Shift	1
6	1529	Bearing — Needle ¾ I.D.	2	46	3503	Fork — Shift	2
7	1461	Seal — Oil 5/8 Shaft	1	47	933156	Roll Pin 1/8 x 1	2
8	1213	Seal Oil 1½ Shaft	2	48	5614	Pin — Shift Stop	1
9	3915	Pin — Dowel	2	49	3525	Gear — Cluster	1
10	6941	Case — L.H.	1	50	1504	Bearing — Bronze ¾ I.D.	2
11	1530	Bearing — Needle 1" I.D.	1	51	3528	Gear — Reduction Pinion	1
12	1531	Bearing — Needle 5/8 I.D.	1	52	3527	Gear — Reduction	1
13	1232	Seal — Oil 1" Shaft — Brake	1	53	3910	Shaft — Cluster Gear	1
14	7194	End Cap R.H.	1	54	937014	Key 9 Woodruff	2
15	7195	End Cap L.H.	1	55	4204	Gear — Reverse Idler	1
16	7196	Gear — Differential Ring	1	56	1516	Bushing — Bronze ½" I.D.	1
17	7197	Gear — Axle	2	57	3909	Shaft	1
18	7198	Gear — Differential Pinion	10	58	4166	Gear — Brake Shaft	1
19	7199	Washer — Thrust	2	59	3902	Drum — Brake	1
20	908138-4	Bolt 3/8-16 x 3¼	5	60	937022	Key 15 Woodruff	1
21	915663-4	Nut — Elastic Stop 3/8-16	5	61	936131	Snapping 1" Shaft	1
22	920009-4	Washer — Flat 3/8 SAE	10	62	4437	Ass'y. Brake Band & Lining	1
23	7202	Axle — Rear R.H.	1	63	908002-4	Bolt — Hex ¼-20 x 5/8	2
24	7203	Axle — Rear L.H.	1	64	920081-4	Lockwasher ¼" Dia.	2
25	7169	Snap Ring — Heavy Duty — External	2	65	943460	Plug ¼ Pipe	1
26	7201	Shaft — Input	1	66	943420	Plug 3/8 Pipe	1
27	7204	Gear & Spline	1	67	3912	Gasket	1
28	1518	Bearing — Needle 5/8 I.D.	4	68	908043-4	Bolt Hex 3/8-16 — 3½	1
29	5175	Pinion Gear & Spline	1	69	908038-4	Bolt Hex 3/8-16 x 2	5
30	7205	Gear — Sliding	1	70	915113-6	Nut 3/8-16 Nylok	6
31	7206	Gear — Reduction	1	71	943322	Nipple 3/8 Pipe x 1	1
32	7207	Bearing — Needle 3/8 I.D.	2	72	943003	Coupling 3/8 Pipe	1
33	7208	Shaft — Reduction Gear	1	73	5632	Ass'y. Shift Stick	1
34	7209	Ass'y. Shift Fork	1	74	1239	Set Screw ¼-20 x ¾ Dog Point	1
35	3517	Ball — Stop	3	75	915111-4	Nut Hex ¼-20	1
36	3518	Spring — Stop	2	76	3577	Boot	1
37	7213	Bolt — Detent	1	77	1001	Knob	2
38	7214	Lever — Shift	1	78	7217	Ass'y. Handle — Shift	1
39	7200	Body	2	79	933184	Roll Pin 3/16 x 3/4	1
40	933209	Roll Pin	2	80	7418	Washer — Thrust	1

*Not included in No. 5060 Assembly.

ATTACHMENTS AVAILABLE MODEL 1067-1267 TRACTOR

48" ROTARY MOWER (RL-486) 42" ROTARY MOWER (RL-426) 36" ROTARY MOWER (RL-367) 37" SNOW THROWER (ST-376) 50" SICKLE BAR MOWER (SMS-506) 42" DOZER BLADE (BD-426) 32" DISK (DP-861) 36" TILLER (RT-367) 12" PLOW (PP-513)	TRAILING CULTIVATOR (AC-7) TWO SECTION CULTIVATOR (AC-675) GRADER BLADE (MB-405) SPIKE TOOTH HARROW (PH-183) 4-WHEEL UTILITY WAGON (UW-645) 2-WHEEL DUMP TRAILER (LTD-244) SPIKED DISK AERATOR (SC-152) LAWN ROLLER (LR-322) GANG MOWER 60" CUTTING WIDTH — REEL TYPE (SGM-603)
---	---

OPTIONAL ACCESSORIES MODEL 1067-1267 TRACTOR

FRONT AND REAR WHEEL DISCS (WD-7) POWER TAKE-OFF (PTO-66) REAR WHEEL WEIGHTS (WW-126) FRONT WHEEL WEIGHTS (WF-60)	ATTACHMENT CLUTCH (PT-6) TIRE CHAINS (TC-13) DUAL WHEELS (DW-62) AUXILIARY HITCH (AH-63)
--	---