

Wheel Horse®

LAWN AND GARDEN TRACTORS

**models
1057-1257**



**OPERATION AND
SERVICE MANUAL
WITH PARTS LIST**



WHEEL-HORSE PRODUCTS, INC.

SOUTH BEND, IND.

ASSEMBLY

A. The Tractor is shipped in one carton with the rear wheel and tire assembly, Part No. 5432, in a separate carton.

B. Mount rear wheels to the hubs using the ten lug bolts, Part No. 1004.

C. Mount front wheels to spindles using the $\frac{3}{8}$ -16 x $\frac{3}{4}$ Nylok bolts, Part No. 908033-6 and washers, Part No. 2844. Press on hub caps.

D. Mount the steering wheel to steering shaft with the Woodruff Key, Part No. 937014, Special washer, Part No. 3775, and the $\frac{3}{8}$ -16 x $\frac{1}{2}$ bolt, Part No. 908030-4. Press on steering wheel insert.

WARRANTY

We warrant WHEEL HORSE PRODUCTS for ONE YEAR from date of purchase against defective parts and workmanship. We will replace, free of charge, any defective part if returned to the factory PREPAID*. Wheel Horse Products, Inc., reserves the right to make changes or improvements upon its products without imposing any obligation upon itself to install the same upon its products that have been previously manufactured.

The engine and battery carry a separate warranty by the manufacturer. FOR ENGINE OR BATTERY SERVICE, CONTACT YOUR LOCAL ENGINE OR BATTERY SERVICE HEADQUARTERS.

*All warranty claims, work, shipments, must be handled through your authorized Wheel Horse dealer.

NOTE: 90 Day Warranty for Commercial Use.

BEFORE YOU START

There is **NO OIL** in the crankcase of the engine when shipped from the factory. **OIL** is recommended by the engine manufacturer and must be followed for best performance and long life. See Engine Manual.

Lubricate all grease fittings with a regular pressure gun lubricant every eight to ten hours of operation. Refer to Figure 1 for the location of grease fittings.

A light machine oil should be used on all moving parts to keep joints from wearing and squeaking.

Remove oil filler plug, located at the left rear side of the transmission, and fill to level of hole with a good grade of S.A.E. 40 oil (will require about 3 pints).

The transmission should be checked after every 40 hours of use. The transmission should be drained once a year by removing plug on bottom to drain oil. Refill as above paragraph. This is a regular automotive type transmission with sliding gears and should have the same care as your car.

BATTERY

The battery installed in the tractor is a dry charged battery. It is important that you properly prepare this battery to insure good service and long life.

1. Remove vent caps. Remove or destroy any sealing device which may have been used to close or restrict the vent openings.

2. Fill each cell of the battery to the proper level with the battery electrolyte.

NOTE: Temperature of battery and electrolyte at time of filling should be above 60°F. Never fill battery in the vehicle.

3. **BOOST CHARGE:** 15 amps. for 10 minutes or 7 amps. for 30 minutes. Adjust electrolyte level, if necessary, after charge.

4. Install battery with battery posts toward the rear of tractor. Start engine. After battery has been in service, add only approved water.

DO NOT ADD ACID.

TIRES

The front tires are 16 x 5.50-8 and should be inflated to 12 pounds of air pressure. The rear tires are 8 x 12 and should have 8 pounds of air pressure. The tires can also be filled with ballast if desired. Ordinarily this is not necessary as the weight of the operator will add sufficient weight for adequate traction.

STARTING ENGINE

1. Before starting the engine fill gas tank (located under the hood) with a good grade of regular gas, and open valve on fuel filter. See Figure 1.

2. Place gear shift lever in neutral position.

3. Pull throttle lever $\frac{1}{2}$ way out and turn to the right to lock it in position. **Note:** The throttle control has a locking device. Turn the throttle control to the left to unlock, adjust to the desired position and turn to the right to lock.

4. Pull choke lever all the way out to choke engine. If engine is warm and has been running, choking may not be necessary.

5. The tractor has a key starter-switch. Turn key all the way to right to start engine.

6. When engine starts push choke in to off position and regulate throttle control by turning to the left to unlock and push in or out to desired speed.

7. Depress clutch pedal on left side of tractor before selecting desired gear range.

8. When starting tractor in winter it is desirable to depress clutch so engine does not have to turn transmission.

CLUTCHING

Don't force the gear shift lever if the gears do not immediately mesh. Depress clutch pedal all the way down and let up, then depress again and shift. To avoid sudden starts, release clutch pedal slowly. While in motion do not shift gears without depressing clutch pedal.

The clutch pedal also operates the brakes **WHEN DEPRESSED ALL THE WAY DOWN**. For this reason, you should depress the clutch pedal **ONLY $\frac{3}{4}$ OF THE WAY DOWN WHEN SHIFTING** while in motion. This clutch-brake pedal combination makes clutching automatic as you apply the brakes to stop.

PARKING BRAKE

The parking brake is located on the left side of the tractor as shown in Figure 1. To set the parking brake depress the clutch-brake pedal as far as possible and push the parking brake down. To release the brake depress the clutch-brake pedal.

ATTACHING TOOLS

Complete information on the assembly, attachment, operation and service of the many attaching tools will be provided with each attachment.

All drawn implements attach in seconds. Simply lift the tractor hitch pin, insert the tongue, and replace pin.

CARE OF TRACTOR

1. Keep tractor greased and oiled regularly. Refer to Figure 1 for the location of grease fittings. Check transmission and engine case oil levels.

2. Keep engine air cleaner clean. This will add to engine life.

3. Keep tires properly inflated. See previous instructions.

4. Keep tractor covered and in a dry place when not in use.

5. Keep grass and dirt out of engine cowling as these will stop the flow of air and decrease engine life.

6. BRAKE ADJUSTMENT. The brake band, located on the left side of the transmission, brakes the transmission and in turn stops the wheels.

To adjust, depress clutch brake pedal and move parking brake lever forward into the engaged position. Tighten nut on brake rod until both rear wheels skid when tractor is pushed — parking brake engaged. Tighten nut another $\frac{1}{2}$ turn. The brake and parking brake are now properly adjusted.

7. CLUTCH-BRAKE PEDAL ADJUSTMENT. The clutch-brake pedal rod may be turned in or out to adjust the pedal to operator's desired position. Remove pin from rod and turn rod in or out for adjustment. There are also two holes in the pedal to adjust for travel. The upper hole is for a short movement of travel, the lower hole is for a long movement.

8. When replacing belts or mounting drive implements make sure all pulleys are in line.

9. BATTERY. Check electrolyte level periodically. If tractor has been in storage it may be necessary to recharge.

10. Your tractor is only as good as the service you give it. See your Wheel Horse Dealer for a thorough check-up after each season of use.

11. When replacing belts be sure to purchase genuine Wheel Horse belts, as these belts are specifically designed for each application.

(NOTE: Make sure all pulleys are in line.)

12. To raise seat/fender unit pull knob back. See Fig. 1. Seat should be latched before operating tractor.

SAFETY SUGGESTIONS

Recommended by Outdoor Power Equipment Institute

1. Know the controls and how to stop quickly — read the owners manual.

2. Do not allow children to operate machine; nor adults to operate it without proper instruction.

3. Clear work area of objects which might be picked up and thrown.

4. Disengage all clutches and shift into neutral before starting motor. Keep hands, feet, and clothing away from power driven parts.

5. Do not carry passengers. Keep children and pets a safe distance away.

6. Never direct discharge of any material toward bystanders, nor allow anyone near machine while in operation.

7. Disengage power to attachment (s) and stop motor before leaving operator position.

8. Take precautions when leaving machine unattended (to avoid accidental starting, rolling away, accidental dropping of any attachment, etc.)

9. Disengage power to any attachment whenever it is not in use, or when traveling from one work area to another.

10. Stay alert for holes and other hidden hazards. Know what is behind you, before backing up.

11. Beware of steep slopes; reduce speed on all side slopes and sharp turns, to prevent tipping or losing control.

12. Don't stop or start suddenly when going uphill or downhill.

13. Use care when pulling loads or using heavy equipment.

14. Watch out for traffic when near roadways.

15. Handle gasoline with care — it is highly flammable.

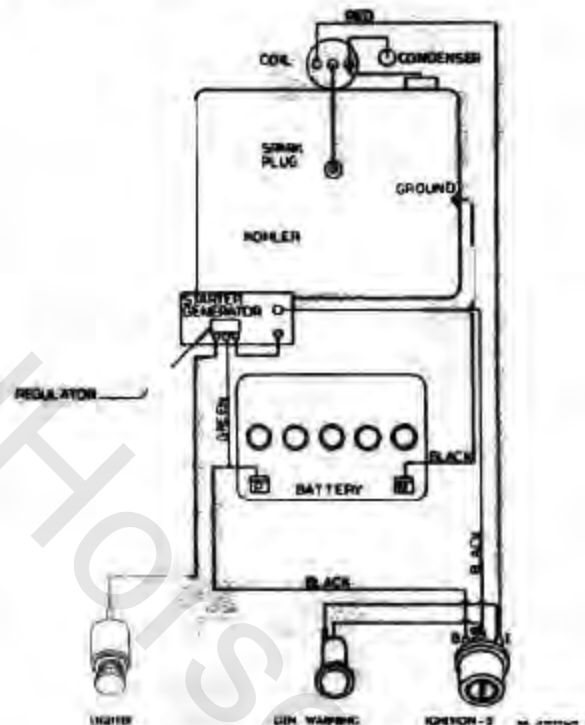
a. Use approved gasoline container.

b. Never add gasoline to a running motor — fill tank out of doors wipe up spilled gasoline.

c. Replace gasoline cap securely.

d. Open doors if motor is run in garage — exhaust gases are dangerous.

17. Keep machine in good operating condition and keep safety devices in place. Use guards as instructed in owner's manual.



WIRING DIAGRAM

SPECIFICATIONS

(Specifications subject to change without notice.)

Length Overall	65 inches
Wheelbase	45 $\frac{1}{2}$ inches
Width Overall	36 inches
Width at Front Wheels	33 $\frac{1}{2}$ inches
Height	40 inches
Height to Top of Hood	35 inches
Approx. Shipping Weight 1057	535 lbs.
Approx. Shipping Weight 1257	545 lbs.
Crop Clearance	7 $\frac{1}{4}$ inches
Frame Clearance	13 $\frac{1}{2}$ inches
Engine (4-cycle, single cylinder, air cooled)	Electric Start
Engine Oil Capacity	5 pints
Fuel Capacity	6 quarts
Tires (front) 5.50-8 Pneumatic (16" wheel dia.)	
Tires (rear) Terra-Type 8.50 x 12" Pneumatic (23" wheel dia.)	
Speeds — 3 Forward to 6 M.P.H. 1 Reverse to 2 $\frac{1}{2}$ M.P.H.	
Turning Radius (to outside of outside wheel)	6' 9"

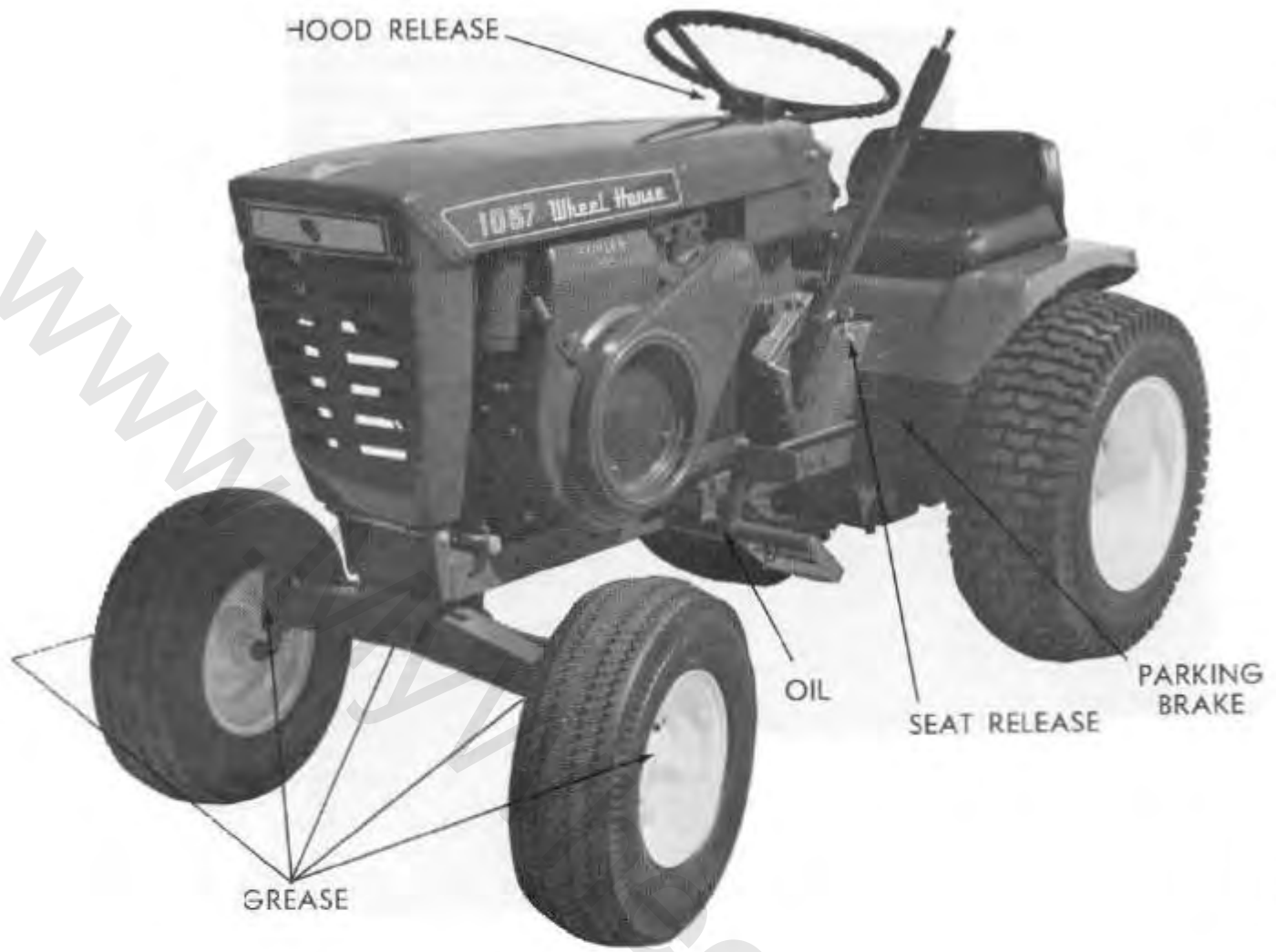
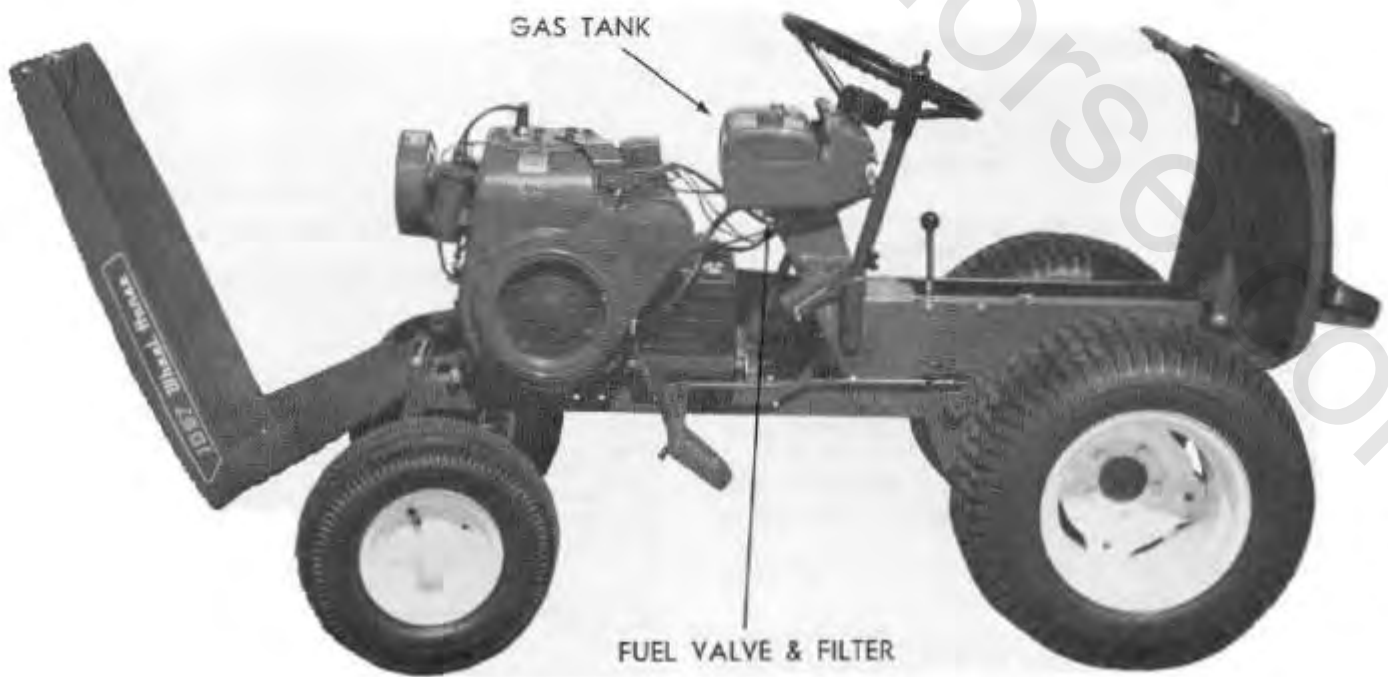
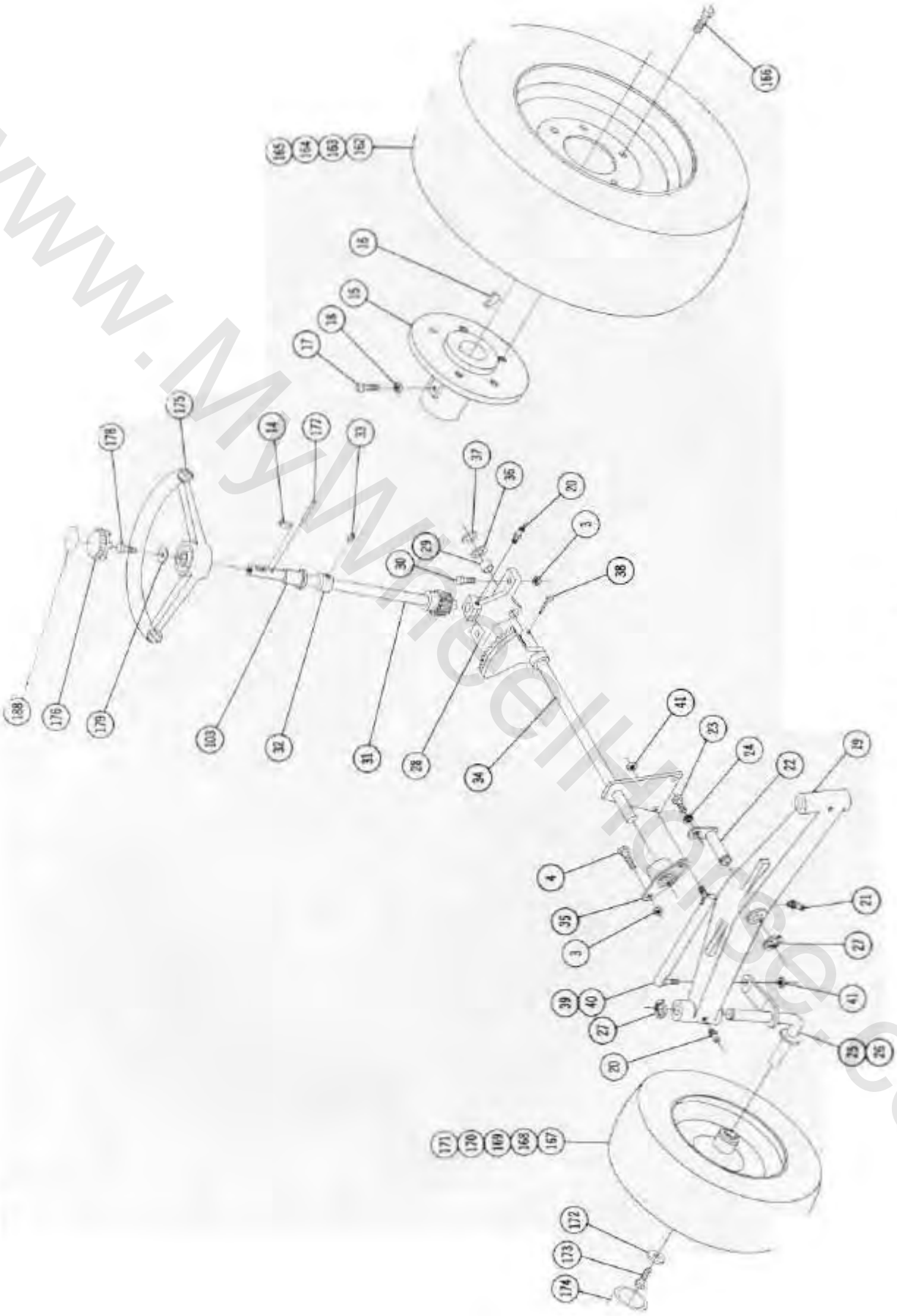


Figure 1

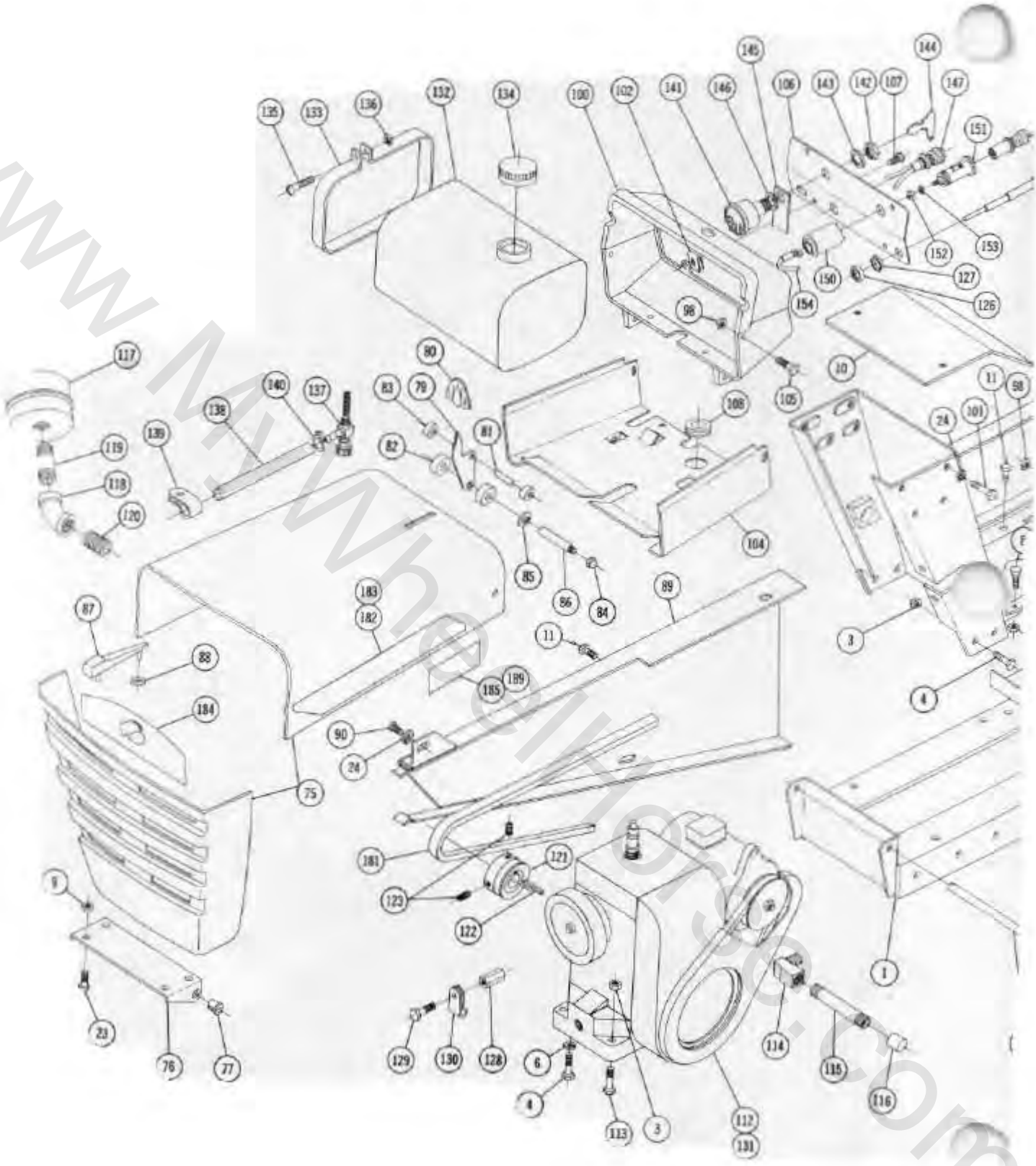


WWW.AMYN.COM

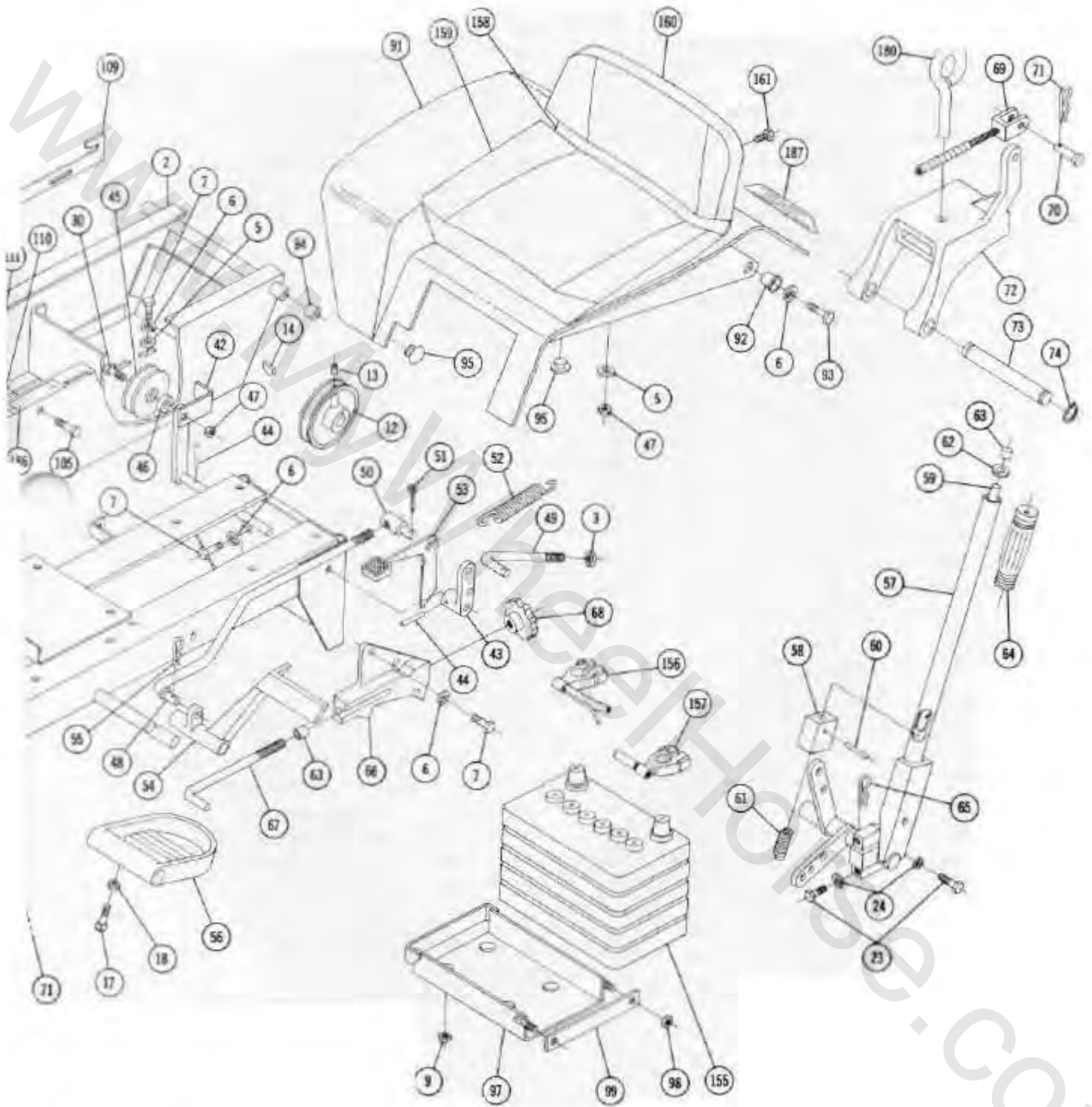


Steerin & Wheel Ass

WWW.MANTRONIC.COM



MA N FRAME,



& HOOD ASS'Y.

PARTS LIST for 1057-1257 LAWN and GARDEN TRACTOR

Except Transmission — see pages 10 and 11 for Transmission break down and Parts List.

When ordering parts always list Part No. and name of part.

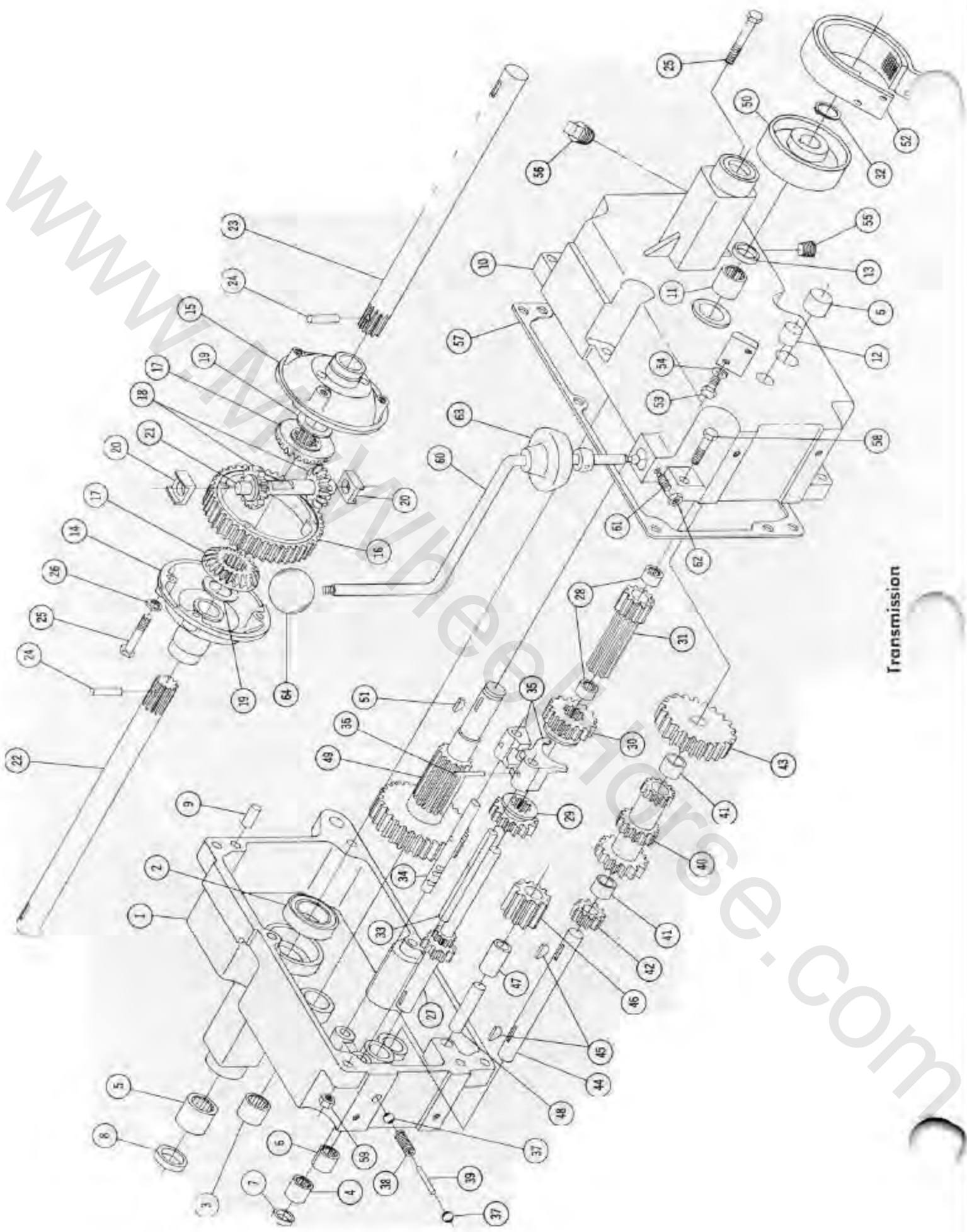
Ref. No.	Part No.	Description	No. Req'd.	Ref. No.	Part No.	Description	No. Req'd.
	6456	Ass'y. Frame	1	46	1536	Bushing	
2	6508	Ass'y. Hoodstand	1	47	915113-6	Nut Nylok $\frac{3}{8}$ -16	
3	915663-4	Nut Elastic Stop $\frac{3}{8}$ -16	9	48	2593	Rod — Clutch	
4	908034-4	Bolt Hex $\frac{3}{8}$ -16 x 1	6	49	3935	Rod — Brake	
5	920009-4	Washer $\frac{3}{8}$ SAE	4	50	1861	Stud — Clutch Rod	
6	920083-4	Lockwasher $\frac{3}{8}$ Plain	10	51	932017-4	Cotter Pin $\frac{1}{8}$ x 1	
7	908032-4	Bolt Hex $\frac{3}{8}$ -16 x $\frac{3}{4}$	8	52	1014	Spring — Clutch	
8	908017-4	Bolt $\frac{3}{16}$ -18 x $\frac{3}{4}$	2	53	5544	Ass'y. Lever & Knob — Brake	
9	915112-6	Nut Nylok $\frac{3}{16}$ -18	10	54	2267	Pedal — Clutch	
10	5622	Ass'y. Cover Plate	1	55	933504-4	Hairpin Cotter	
	960151-4	Bolt Whizlock $\frac{1}{4}$ -20 x $\frac{1}{2}$	4	56	4421	Footrest	
12	5425	Pulley	1	57	5448	Ass'y. Lift Lever	
13	909849-5	Set Screw Nylok $\frac{1}{4}$ -20 x $\frac{3}{8}$	1	58	4438	Plunger	
14	937014	Key #9 Woodruff	2	59	5449	Rod	
15	6465	Hub — Wheel	2	60	933168	Roll Pin $\frac{5}{32}$ x $\frac{13}{16}$	
16	937022	Key #15 Woodruff	2	61	3624	Spring	
17	909554	Set Screw Sq. Hd. $\frac{3}{8}$ -16 x 1	4	62	3578	Guide — Plunger Rod	
18	915113-4	Nut Hex $\frac{3}{8}$ -16	4	63	3680	Cap — Plunger Rod	
19	5638	Axle — Front	1	64	1000	Grip — Handle	
20	1030	Fitting — Grease	2	65	933506-4	Hairpin	
21	1481	Fitting — Grease 45°	1	66	5640	Quadrant	
22	6216	Ass'y. Pin & Plate	1	67	2179	Rod — Height Control	
23	908015-4	Bolt Hex $\frac{3}{16}$ -18 x $\frac{1}{2}$	8	68	5280	Knob — Height Control	
24	920082-4	Lockwasher $\frac{3}{16}$ Plain	9	69	3931	Ass'y. Cable — Lift	
25	5630	Ass'y. Spindle — R.H.	1	70	932120-4	Pin — Clevis $\frac{1}{4}$ Dia.	
26	5631	Ass'y. Spindle — L.H.	1	71	933503-4	Hairpin Cotter	
27	5618	E-Ring $\frac{3}{4}$ Dia.	3	72	3926	Hitch	
28	6396	Support Steering	1	73	3988	Pin Hitch	
29	6397	Bushing	1	74	936125	Snap Ring $\frac{3}{4}$ Shaft	
30	908035-4	Bolt Hex $\frac{3}{8}$ -16 x $1\frac{1}{4}$	3	75	6460	Ass'y. Hood	
31	6943	Ass'y. Shaft — Upper Steering	1	76	5455	Bracket — Hood Hinge	
32	1085	Collar	1	77	5457	Bushing — Nylon	3
33	909848-5	Set Screw Nylok $\frac{1}{4}$ -20 x $\frac{1}{4}$	1	78	6490	Rod — Hood Pivot	
34	6469	Ass'y. Steering Shaft — Lower	1	79	5467	Lever — Hood Latch	
35	6472	Ass'y. Bearing & Housing	1	80	5469	Knob	
36	5210	Washer — Shim .015	1	81	933182	Roll Pin $\frac{3}{16}$ x $\frac{3}{8}$	
37	1278	Washer — Shim .050	1	82	5505	Roller — Rubber	
38	932035-4	Cotter Pin $\frac{3}{16}$ x $1\frac{1}{4}$	1	83	5468	Roller — Steel	
39	5628	Ass'y. Ball Joint — R.H.	1	84	915902-4	Nut — Low Crown #10-24	
40	5629	Ass'y. Ball Joint — L.H.	1	85	5466	Speed Nut Push On — $\frac{1}{4}$ Dia.	
41	915002-6	Nut Nylok $\frac{3}{8}$ -24	4	86	5522	Rod — Hood Latch	1
42	6951	Ass'y. Idler Arm & Shaft	1	87	5438	Ornament — Hood Latch	1
43	4899	Arm — Clutch Rod Pivot	1	88	5437	Speed Nut — Push On — $\frac{1}{2}$ Dia.	2
44	933158	Roll Pin $\frac{1}{8}$ x $1\frac{1}{4}$	2	89	6509	Ass'y. Belt Guard	
	1623	Pulley — Idler	1	90	908015-6	Bolt Hex $\frac{3}{16}$ -18 x $\frac{1}{2}$ — Nylok	

PARTS LIST for 1057-1257 LAWN and GARDEN TRACTOR

Except Transmission — see pages 10 and 11 for Transmission break down and Parts List.

When ordering parts always list Part No. and name of part.

Ref. No.	Part No.	Description	No. Req'd.	Ref. No.	Part No.	Description	No. Req'd.
91	5660	Ass'y. Fender	1	141	4988	Ass'y. Switch — Ignition	
92	5666	Bushing — Nylon	2	142	4882	Nut — Hex Special $\frac{3}{8}$ -32	
93	908182-4	Bolt $\frac{3}{8}$ -24 x $\frac{7}{8}$ Hex	2	143	920160-4	Lockwasher $\frac{3}{8}$ Dia. Internal Tooth	
94	4937	Spacer	2	144	4989	Key — Ignition	
95	5667	Bumper — Rubber	4	145	5451	Insulator — Switch	
96	6825	Cover — Dust	1	146	920215-4	Washer — Spacer	
97	6477	Ass'y. Battery Box	1	147	5423	Ass'y. Lamp — Generator	1
98	915111-6	Nut Nylok $\frac{1}{4}$ -20	8	148	5480	Ass'y. Cigar Lighter — Complete	
99	6480	Clamp — Battery	1	149	5481	Ass'y. Knob & Plug	1
100	5450	Housing — Control Panel	1	150	5483	Shell	1
101	908016-4	Bolt Hex $\frac{5}{16}$ -18 x $\frac{5}{8}$	4	151	5482	Ass'y. Socket	1
102	5442	Speed Nut #10-16 Thread	4	152	915562	Nut — #8-32 Brass	2
103	5409	Bushing — Nylon	1	153	920078-4	Lockwasher #8	1
104	5458	Support — Fuel Tank	1	154	5484	Ass'y. Wire	1
105	960152-4	Bolt — Whizlock $\frac{1}{4}$ -20 x $\frac{5}{8}$	6	155	6486	Battery	1
106	5453	Panel — Complete	1	156	6487	Wiring Harness	1
107	926308-4	Screw — Self-Tap #10-16 x $\frac{3}{4}$	4	157	6488	Wire — Battery to Ground	1
108	5439	Grommet — Rubber	1	158	7018	Ass'y. Seat Base	1
109	5695	Latch	1	159	7019	Cushion — Seat	1
110	MW-4404	Washer — Spring $\frac{3}{32}$ Dia.	2	160	7020	Cushion — Back	1
111	920007-4	Washer $\frac{1}{4}$ SAE	2	161	7027	$\frac{1}{4}$ -20 x $\frac{1}{2}$ Hex — Black	4
112	6482	Ass'y. Engine 12 H.P. Kohler (1257)	1	162	5432	Ass'y. Wheel & Tire	2
113	908036-4	Bolt Hex $\frac{3}{8}$ -16 x $1\frac{1}{2}$	2	163	5433	Wheel — 12 x 7 JA	2
114	5222	Elbow — 90° Special	1	164	5434	Tire — 23 x 8.50-12 Lawn & Garden	2
115	5223	Nipple $\frac{3}{8}$ Pipe x $3\frac{1}{2}$ Special	1	165	5435	Valve	2
116	5224	Cap $\frac{3}{8}$ Pipe	1	166	1004	Lug Bolt Wheel $\frac{7}{16}$ -20	10
117	2873	Muffler	1	167	5637	Ass'y. Wheel, Tire & Tube Front	2
118	3939	Elbow 1" x 45°	1	168	5635	Wheel	2
119	943367-4	Nipple 1" Pipe x $2\frac{1}{2}$	1	169	4999	Bearing — Ball	4
120	3947	Nipple 1" Close Pipe	1	170	5636	Tire 16 x 5.50-8	2
121	6483	Pulley — Engine	1	171	5512	Tube	2
122	6507	Key $\frac{1}{4}$ x $\frac{1}{4}$ x $\frac{1}{2}$	1	172	2844	Washer	2
123	909862-5	Set Screw $\frac{5}{16}$ -18 x $\frac{5}{16}$	2	173	908033-6	Bolt $\frac{3}{8}$ -16 x $\frac{7}{8}$ Nylok	2
124	5170	Ass'y. Control — Choke		174	2816	Hub Cap	2
125	6484	Ass'y. Control — Throttle	1	175	4875	Steering Wheel	1
126	1364	Nut — Round $\frac{5}{16}$ -18	2	176	2897	Insert	
127	920127-4	Lockwasher — Shakeproof $\frac{5}{16}$	2	177	933188	Roll Pin $\frac{3}{16}$ x 1	
128	5431	Nut — Hex Special $\frac{1}{4}$ -20	1	178	908030-4	Bolt Hex $\frac{3}{8}$ -16 x $\frac{1}{2}$	
129	1391	Screw — Sems $\frac{1}{4}$ -20 x $\frac{3}{8}$	1	179	3775	Washer — Special	1
130	2879	Clip	1	180	1813	Tool Pin	1
131	6489	Engine — 10 H.P. Kohler (1057)	1	181	1586	V-Belt — Drive 76"	
132	5417	Tank — Fuel	1	182	6996	Decal — Hood Trim R.H.	
133	5459	Clamp — Tank	1	183	6997	Decal — Hood Trim L.H.	
134	5186	Cap — Fuel Tank	1	184	6998	Decal — Grille	
135	909059-4	Bolt Round Hd. $\frac{1}{4}$ -20 x $1\frac{1}{4}$	1	185	6939	Decal (1257)	2
136	915182-4	Nut — Square $\frac{1}{4}$ -20	1	186	6165	Decal — Seat Latch	
137	4941	Ass'y. Valve & Filter	1	187	5604	Decal — Fender	
138	6485	Hose — Fuel	1	188	4581	Decal — Steering Wheel	
139	4256	Clip — Fuel	2	189	6995	Decal (1057)	2
140	950153	Clamp — Corbin $\frac{3}{8}$ Dia.	2				



Transmission

OWNERS MAINTENANCE RECORD

OIL CHANGES

DATE _____ TYPE & KIND OF OIL _____

DATE _____ GREASE JOBS _____

TUNE UPS

DATE _____ PARTS REPLACED _____

BATTERY SERVICE

DATE _____ SERVICE REQUIRED _____

MISCELLANEOUS

DATE _____

5080 TRANSMISSION PARTS LIST

When ordering parts always list Part No. and name of Part.
(Order No. 5058 for Complete Transmission.)

Item No.	Part No.	Description	No. Req'd.	Item No.	Part No.	Description	No. Req'd.
1	6940	Case R.H.	1	33	5615	Rail - Front Shift	1
2	1533	Ball Bearing 1 1/2" I.D.	2	34	5616	Rail - Rear Shift	1
3	1532	Bearing - Needle 1" I.D.	1	35	3503	Fork - Shift	2
4	1508	Bearing - Needle 3/4" I.D.	1	36	933156	Roll Pin 1/8 x 1	2
5	1526	Bearing - Needle 1 1/4" I.D.	2	37	3517	Ball - Shift Stop	2
6	1529	Bearing - Needle 3/4" I.D.	2	38	3518	Spring - Shift Stop	1
7	1303	Seal - Oil 3/4" Shaft	1	39	5614	Pin - Shift Stop	1
8	1213	Seal - Oil 1 1/4" Shaft	2	40	3525	Gear - Cluster	1
9	3915	Pin - Dowel	2	41	1504	Bearing - Bronze 3/4" I.D.	2
10	6941	Case L.H.	1	42	3528	Gear - Reduction Pinion	1
11	1530	Bearing - Needle 1" I.D.	1	43	3527	Gear - Reduction	1
12	1531	Bearing - Needle 3/4" I.D.	1	44	3910	Shaft - Cluster Gear	1
13	1232	Seal - Oil 1" Shaft - Brake	1	45	937014	Key #9 Woodruff	2
14	2822	Case - Differential R.H.	1	46	4204	Gear - Reverse Idler	1
15	6446	Case - Differential L.H.	1	47	1516	Bushing - Bronze 1/2" I.D.	1
16	2821	Gear - Differential - Bull	1	48	3909	Shaft	1
17	2820	Gear - Axle	2	49	4166	Gear - Brake Shaft	1
18	2819	Gear - Differential Pinion	2	50	3902	Drum - Brake	1
19	2828	Washer - Thrust	2	51	937022	Key #15 Woodruff	1
20	2826	Block - Differential	2	52	4437	Ass'y. Brake Band & Lining	1
21	2827	Shaft - Differential Pinion	1	53	908002-4	Bolt - Hex 1/4-20 x 3/8	2
22	6450	Axle - Rear - R.H.	1	54	920081-4	Lockwasher 1/4" Dia.	2
23	6451	Axle - Rear - L.H.	1	55	943460	Plug 3/4" Pipe	1
24	933217	Roll Pin 1/4 x 1 1/2	2	56	943420	Plug 3/8" Pipe	1
25	908043-4	Bolt Hex 3/8-16 x 3 1/2	5	57	3912	Gasket	1
26	920156-4	Washer - Internal Shakeproof 3/4" Dia.	4	58	908038-4	Bolt Hex 3/8-16 x 2	5
27	5176	Gear - Input	1	59	915113-6	Nut Hex 3/8-16 Nylok	6
28	1518	Bearing - Needle 3/8" I.D.	2	60	5632	Ass'y. Shift Stick	1
29	5173	Gear - Hi & 2nd	1	61	1239	Set Screw Dog Point 1/4-20 x 3/8	1
30	5174	Gear - Low & Reverse	1	62	915111-6	Nut Hex 1/4-20 Nylok	1
31	5175	Gear - Pinion - Splined	1	63	3577	Boot	1
32	936131	Snap Ring - 1" Shaft	1	64	1001	Knob	1

www.MelHorse.com

