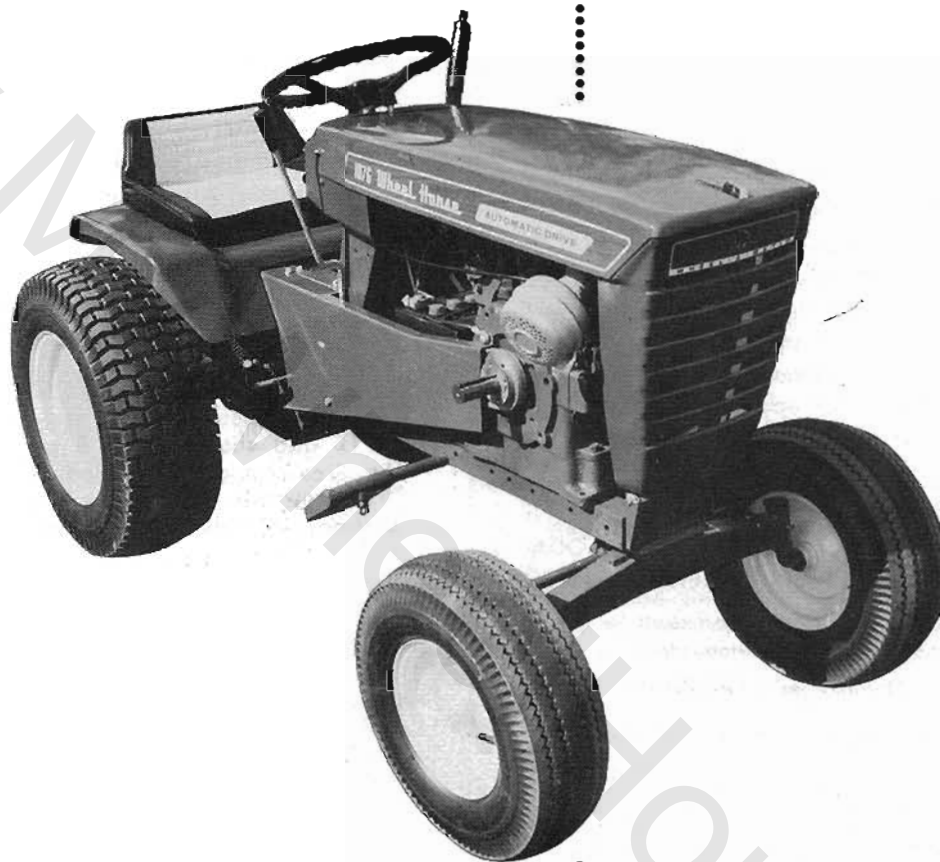


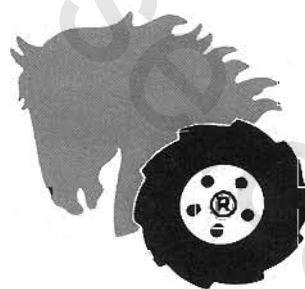
Wheel Horse[®]

LAWN AND GARDEN TRACTORS

models
1076, 1276



OPERATION AND SERVICE MANUAL WITH PARTS LIST



WHEEL-HORSE PRODUCTS, INC.

SOUTH BEND, IND.

ASSEMBLY

A. The Tractor is shipped in one carton with the rear wheel and tire assembly, Part No. 5432, in a separate carton.

B. **Open tractor unit first.** Remove all parts from carton, and place in a convenient arrangement on a clean, level surface.

C. Place the steering wheel, Part No. 4983 on the steering shaft, Part No. 5335 aligning the holes and secure with roll in pin, Part No. 933213.

WARRANTY

We warrant WHEEL HORSE PRODUCTS for ONE YEAR from date of purchase against defective parts and workmanship. We will replace, free of charge, any defective part if returned to the factory PREPAID*. Wheel Horse Products, Inc., reserves the right to make changes or improvements upon its products without imposing any obligation upon itself to install the same upon its products that have been previously manufactured.

The engine and battery carry a separate warranty by the manufacturer. FOR ENGINE OR BATTERY SERVICE, CONTACT YOUR LOCAL ENGINE OR BATTERY SERVICE HEADQUARTERS.

*All warranty claims, work, shipments, must be handled through your authorized Wheel Horse dealer.

NOTE: 90 Day Warranty for Commercial Use.

BEFORE YOU START

There is **NO OIL** in the crankcase of the engine when shipped from the factory. **OIL . . .** See Engine Manual.

Wheel-a-Matic Transmission: The transmission has been filled with Automatic Transmission fluid at the factory. (This is Type "A" automatic transmission fluid, which is used in automobiles and may be purchased at any service station.)

A. Remove Plug from transmission fill pipe, (located under seat) and insert dipstick, Part No. 6155. (See Fig. 1). Now check level of transmission fluid to make sure transmission is filled to proper level.

B. To enable moving the tractor by hand you must loosen the towing valve. (See **Towing Instructions**.)

Lubricate all grease fittings with a regular pressure gun lubricant every eight to ten hours of operation. Refer to Figures 3 & 4 for the location of grease fittings.

A light machine oil should be used where indicated.

BATTERY

The battery installed in the 1076 and 1276 tractors is a dry charged battery. It is important that you properly prepare this battery to insure good service and long life.

1. Remove vent caps. Remove or destroy any sealing device which may have been used to close or restrict the vent openings.

2. Fill each cell of the battery to the proper level with the battery electrolyte.

NOTE: Temperature of battery and electrolyte at time of filling should be above 60°F. Never fill battery in the vehicle.

3. **BOOST CHARGE:** 15 amps. for 10 minutes or 7 amps. for 30 minutes. Adjust electrolyte level, if necessary, after charge.

4. **Install battery with battery posts toward the rear of tractor.** After battery has been in service, add only approved water.

DO NOT ADD ACID.

TIRES

The front tires are 16 x 5.50-8 and should be inflated to 12 pounds of air pressure. **The rear tires are 8 x 12 and should have 8 pounds of air pressure.** The tires can also be filled with ballast if desired. Ordinarily this is not necessary as the weight of the operator will add sufficient weight for adequate traction.

STARTING ENGINE

1. Before starting the engine fill gas tank (located under the hood) with a good grade of regular gas, and open valve on gas tank.

2. The tractors Model 1076 and 1276 have a key starter-switch. Turn key all the way to right to start engine.

3. Pull throttle lever $\frac{1}{2}$ way out and turn to the right to lock it in position. **Note:** The throttle control has a locking device. Turn the throttle control to the left to unlock, adjust to the desired position and turn to the right to lock.

4. Pull choke lever all the way out to choke engine. If engine is warm and has been running, choking may not be necessary.

5. The Model 1076-1276 tractor has a key starter-switch. Turn key all the way to right to start engine.

6. When engine starts push choke in to off position and regulate throttle control by turning to the left to unlock and push in or out to desired speed.

7. When starting tractor in cold weather set the park brake. This releases the drive belt, and the engine does not have to turn the transmission.

PARKING BRAKE

The parking brake is located on the right side of the tractor. (See Figure 3.) To set the parking brake push down on the handle. Brake should always be

set when dismounting from tractor, especially on a grade, otherwise the tractor may creep. When brake is set the drive belt is automatically released. **Caution: Do not set parking brake while tractor is in motion as this may result in damage to the transmission.** Always depress foot pedal (on left side) before releasing parking brake.

ATTACHING TOOLS

Complete information on the assembly, mounting, operation, and service of the attaching tools will be provided with each attachment.

All drawn implements attach in seconds. Simply lift the tractor hitch pin, insert the tongue and replace pin.

OPERATING INSTRUCTIONS

The speed, direction and braking are controlled by the control handle located on the right side.

- To go Forward push the control handle Forward.
- To go Backward pull the control handle Back.
- To Stop put control handle in Neutral position.
- You may also Stop the tractor at anytime by depressing the foot pedal on the left side.

The tractor speed is affected instantly by the movement of the control handle. For safest operation the control handle should not be moved too rapidly, especially on grades.

TOWING INSTRUCTIONS

This tractor should never be towed or pushed without first releasing the towing valve.

A. The towing valve is located on the back surface of the pump (See Figure 1.) To push or tow open the towing valve, using a $\frac{1}{2}$ " wrench. Be sure to retighten the valve gently, but securely, before operating tractor. **NOTE: This is a needle valve and must not be over tightened.**

B. **CAUTION:** Do not tow for long distance or over a speed of seven (7) miles per hour.

TRANSMISSION CARE

Change oil and oil filter every two years or every 500 hours of operation. The transmission oil capacity is approximately four (4) quarts.

- Use only type "A" automatic transmission oil.
- Check oil periodically and maintain at proper level as indicated on dipstick.

CARE OF TRACTOR

1. Keep tractor greased and oiled regularly. Refer to Figure 3 and 4 for the location of grease fittings. Check transmission and engine case oil levels.

2. Keep engine air cleaner clean. This will add to engine life.

3. Keep tires properly inflated. See previous instructions.

4. Keep tractor covered and in a dry place when not in use.

5. Keep grass and dirt out of engine cowlings as these will stop the flow of air and decrease engine life.

6. Keep grass and dirt off transmission and fan screen.

7. Battery — Check liquid after every 40 hours of use. **NOTE:** If tractor has been in storage it may be necessary to recharge battery.

8. Control Handle Friction Adjustment:

The control handle is friction loaded so it will hold at any desired speed. If the handle does not stay where it is set during operation, the friction may be increased by tightening the two screws that put pressure on the nylon cam (see Figure 2). **CAUTION.** Too much friction will cause erratic action on the control handle. **Do Not Lubricate Nylon Cam.**

9. Neutral Adjustment:

A. If tractor should creep while in neutral position this can be corrected. To check for creep place tractor on level surface with engine running, and depress foot pedal. Creep on slopes is normal and cannot be entirely eliminated.

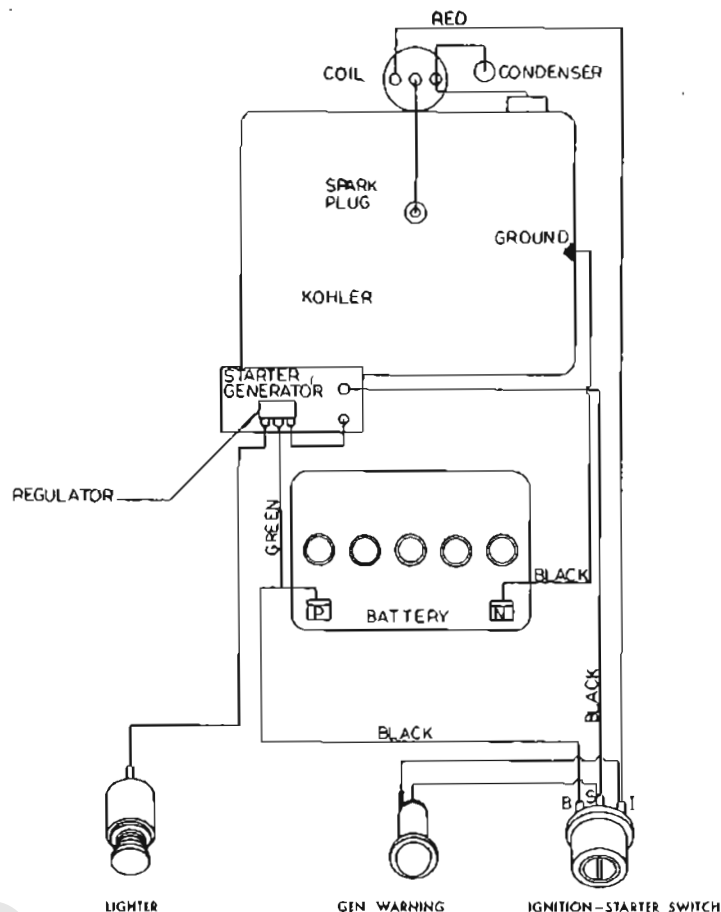
B. To make neutral adjustment (See Figure 2).

1. Block rear wheels off ground.
2. Remove instruction plate, (located in front of the seat) by removing the four screws which hold it.
3. Loosen set screw in arm with allen wrench (See Figure 2).
4. Depress foot pedal on left side.
5. With tractor engine running and park brake disengaged, insert short screwdriver through hole in nylon cam and rotate the eccentric cam pin until rear wheels stop. Now retighten set screw in arm and replace plate.
6. **NOTE:** The lobe on the eccentric pin must be upward for proper operation.
7. When replacing belts be sure to purchase genuine Wheel Horse Belts, as these belts are specifically designed for each application. **NOTE:** Make sure all pulleys are in line.
8. Your tractor is only as good as the service you give it. See your Wheel Horse Dealer for a thorough check-up after each season of use.

SAFETY SUGGESTIONS

Recommended by Outdoor Power Equipment Institute

1. Know the controls and how to stop quickly — read the owners manual.
2. Do not allow children to operate machine; nor adults to operate it without proper instruction.
3. Clear work area of objects which might be picked up and thrown.
4. Disengage all clutches and shift into neutral before starting motor. Keep hands, feet, and clothing away from power driven parts.
5. Do not carry passengers. Keep children and pets a safe distance away.
6. Never direct discharge of any material toward bystanders, nor allow anyone near machine while in operation.
7. Disengage power to attachment (s) and stop motor before leaving operator position.
8. Take precautions when leaving machine unattended (to avoid accidental starting, rolling away, accidental dropping of any attachment, etc.)
9. Disengage power to any attachment whenever it is not in use, or when traveling from one work area to another.
10. Stay alert for holes and other hidden hazards. Know what is behind you, before backing up.
11. Beware of steep slopes; reduce speed on all side slopes and sharp turns, to prevent tipping or losing control.
12. Don't stop or start suddenly when going uphill or downhill.
13. Use care when pulling loads or using heavy equipment. Refer to owners manual.
14. Watch out for traffic when near roadways.
15. Handle gasoline with care — it is highly flammable.
 - a. Use approved gasoline container.
 - b. Never add gasoline to a running motor — fill tank out of doors wipe up spilled gasoline.
 - c. Replace gasoline cap securely.
 - d. Open doors if motor is run in garage — exhaust gases are dangerous.
17. Keep machine in good operating condition and keep safety devices in place. Use guards as instructed in owner's manual.



WIRING FOR 1076, 1276

SPECIFICATIONS

(Specifications subject to change without notice.)

| | |
|--|--------------|
| Length Overall | 65 inches |
| Wheelbase | 45½ inches |
| Width Overall | 36 inches |
| Width at Front Wheels | 33½ inches |
| Height | 39 inches |
| Height to Top of Hood | 35 inches |
| Approx. Shipping Weight 10 H.P. | 640 lbs. |
| Approx. Shipping Weight 12 H.P. | 650 lbs. |
| Crop Clearance | 7¼ inches |
| Frame Clearance | 13½ inches |
| Engine (4-cycle, single cylinder, air cooled) | |
| Electric Start | 10 & 12 H.P. |
| Engine Oil Capacity | 5 pints |
| Fuel Capacity | 6 quarts |
| Tires (front) 5.50-8 Pneumatic (16" wheel dia.) | |
| Tires (rear) Terra-Type 8.00 x 12" Pneumatic (22½" wheel dia.) | |
| Speeds — Infinitely Variable | |
| Forward — 0 to 7 M.P.H. | |
| Reverse — 0 to 3½ M.P.H. | |
| Turning Radius (to outside of outside wheel | 6' 9" |

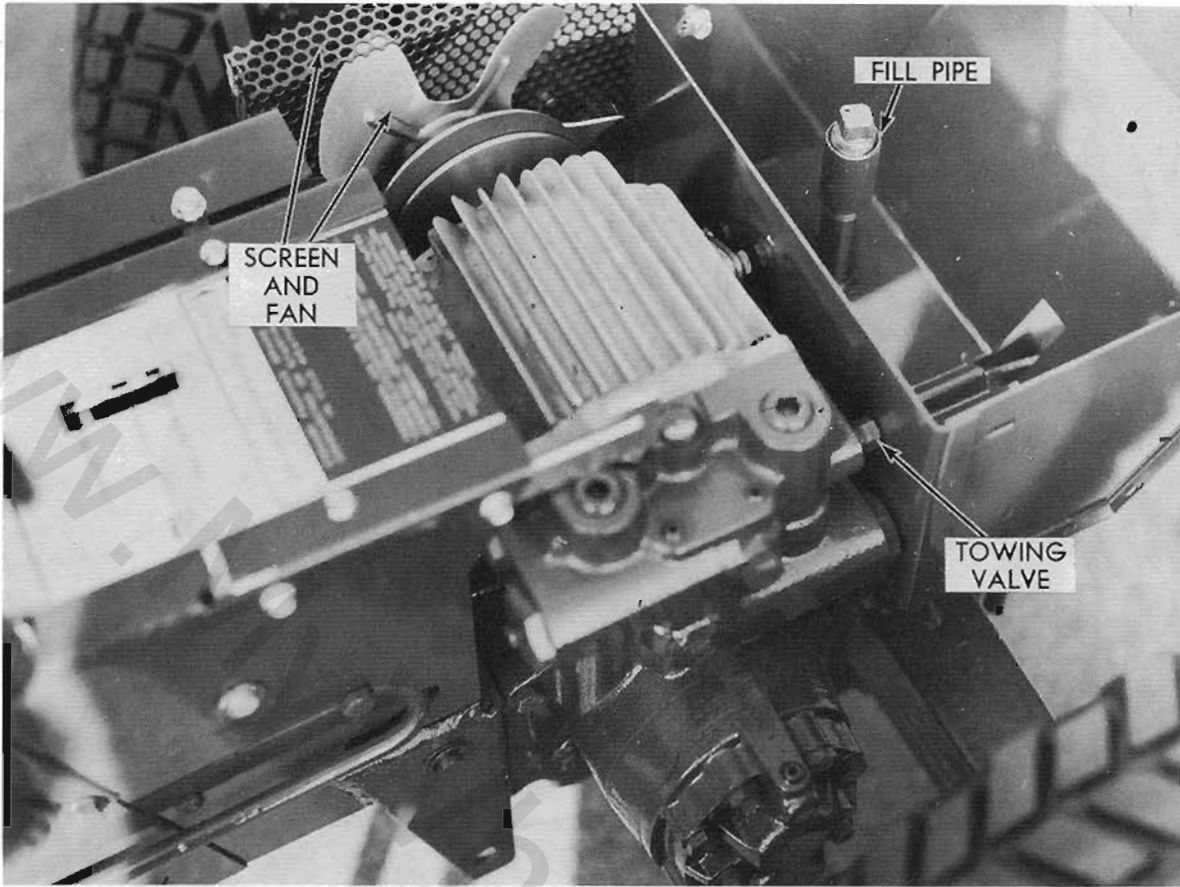


Figure 1

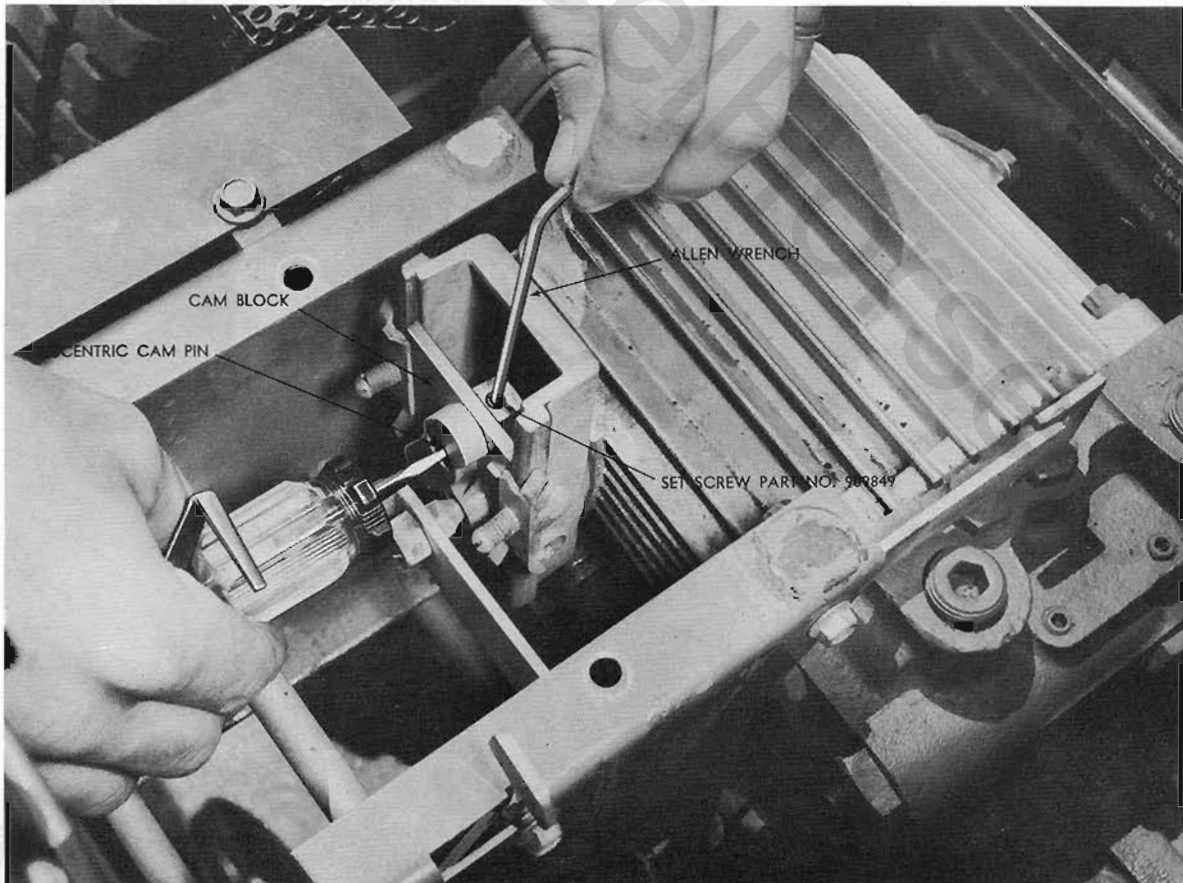


Figure 2

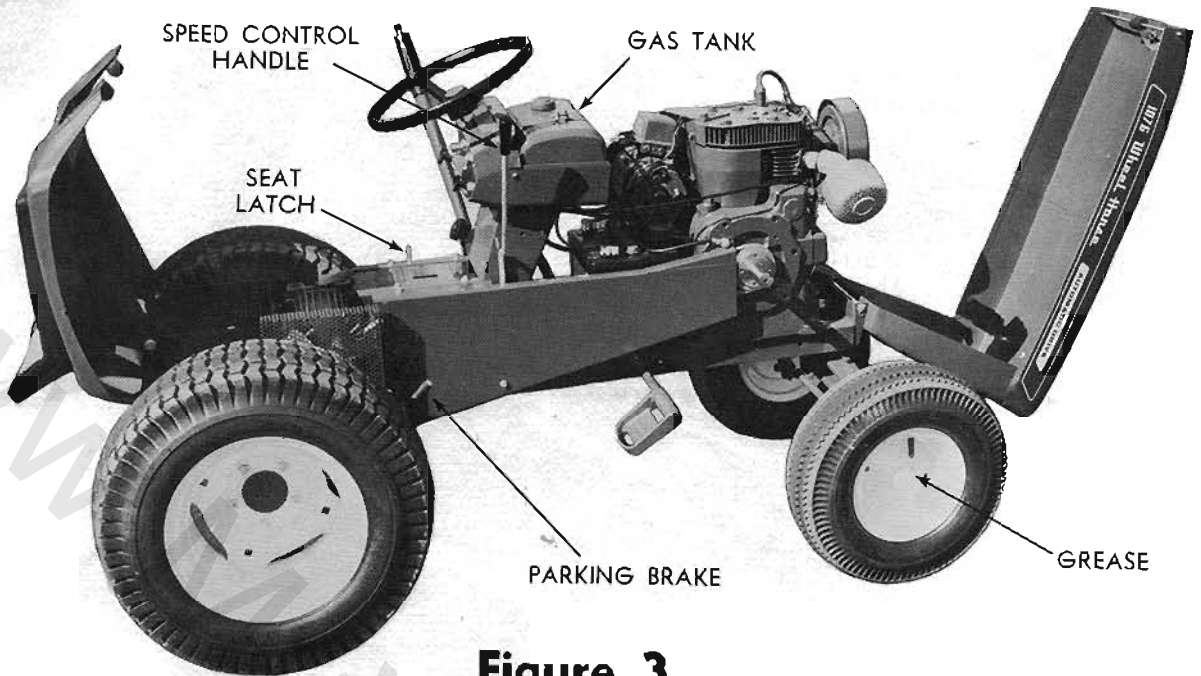


Figure 3

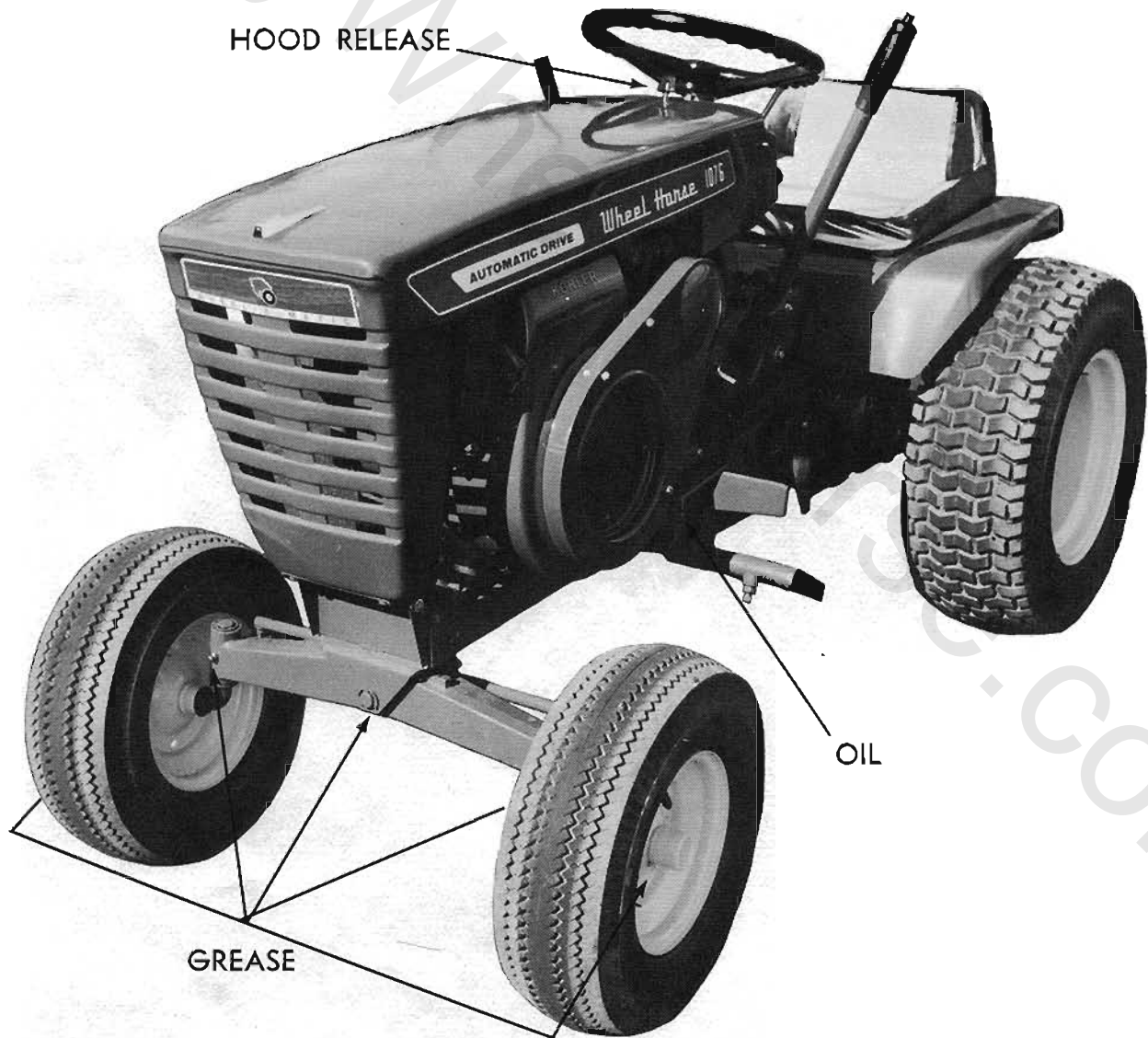
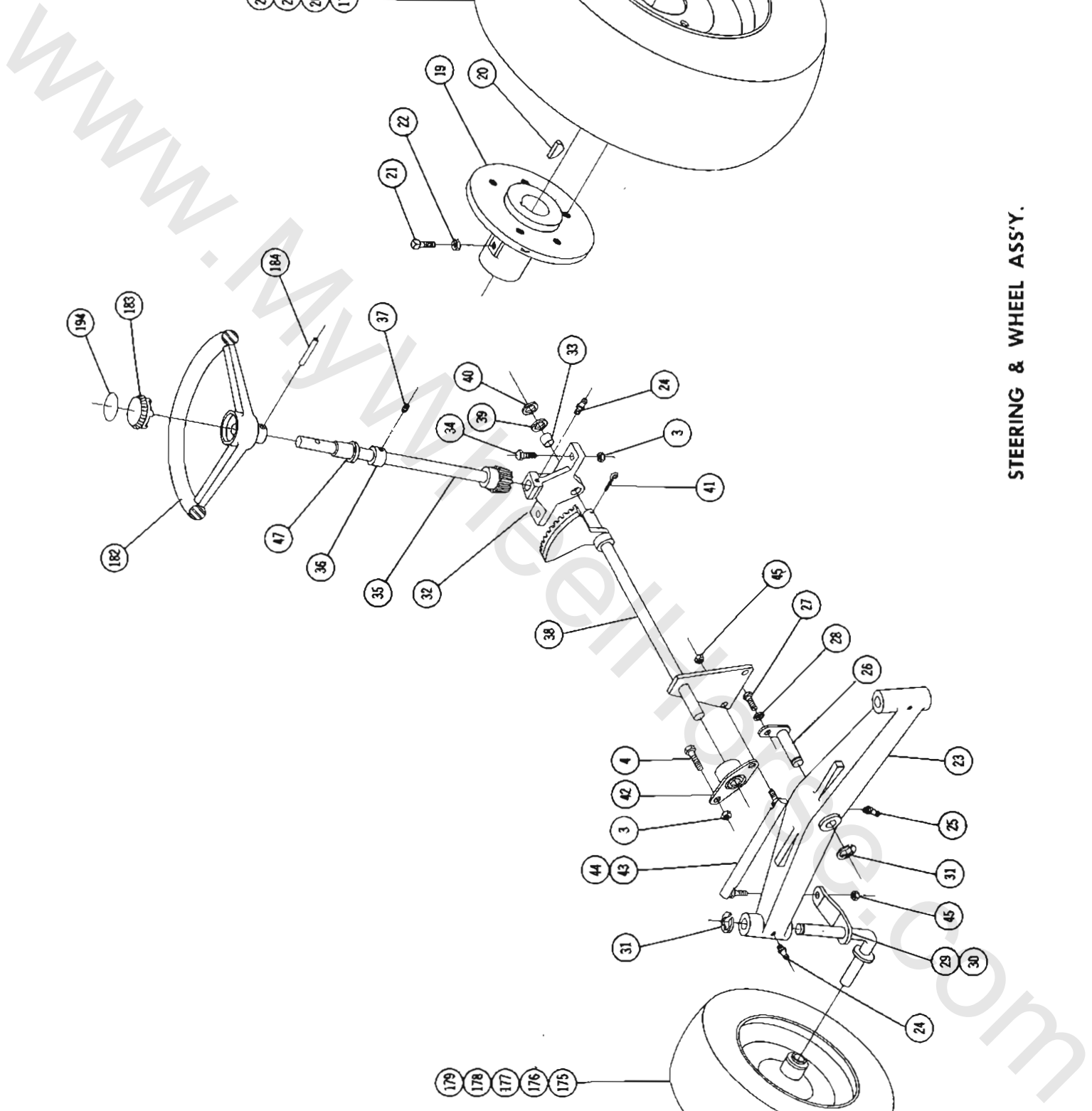
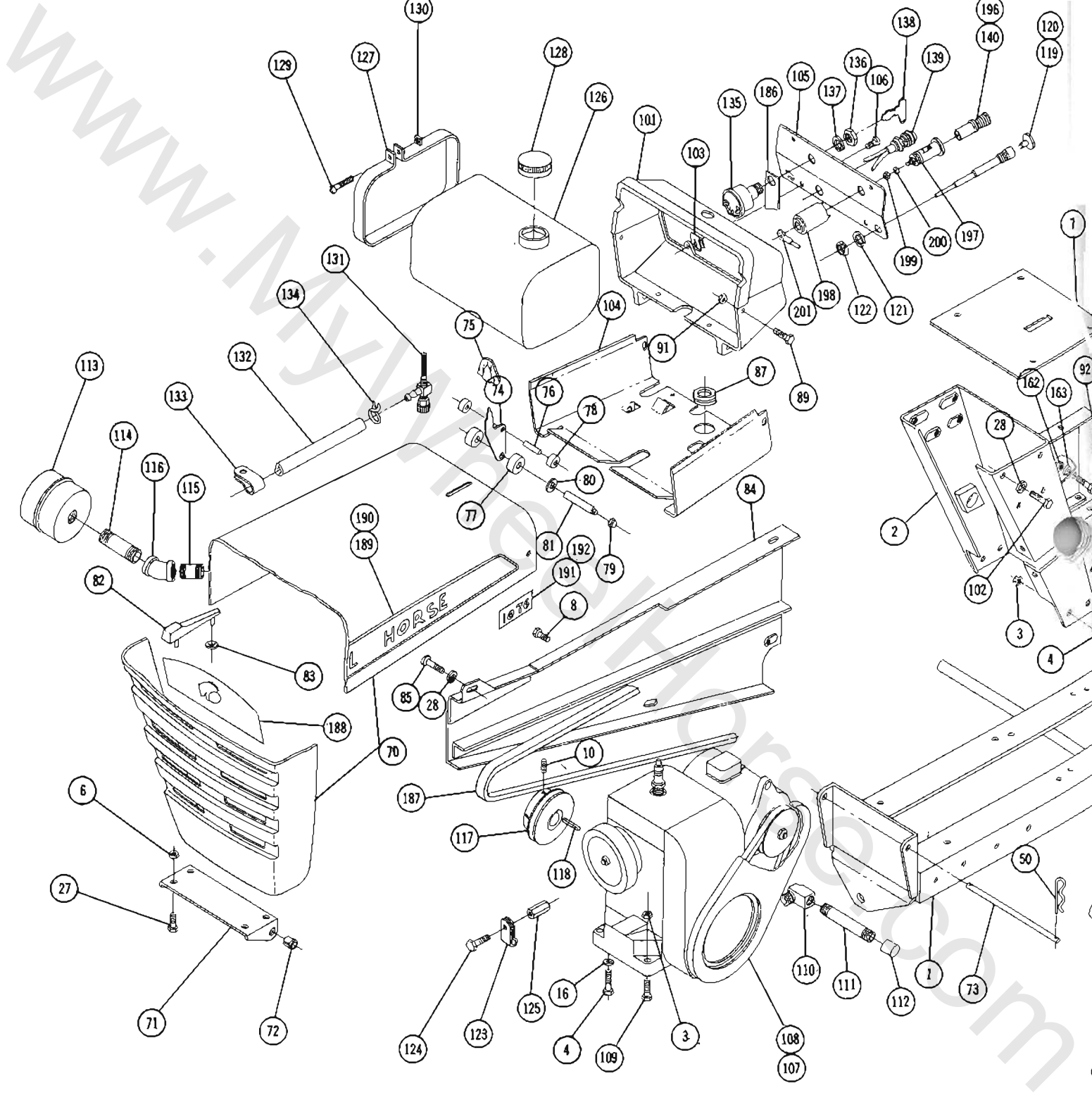


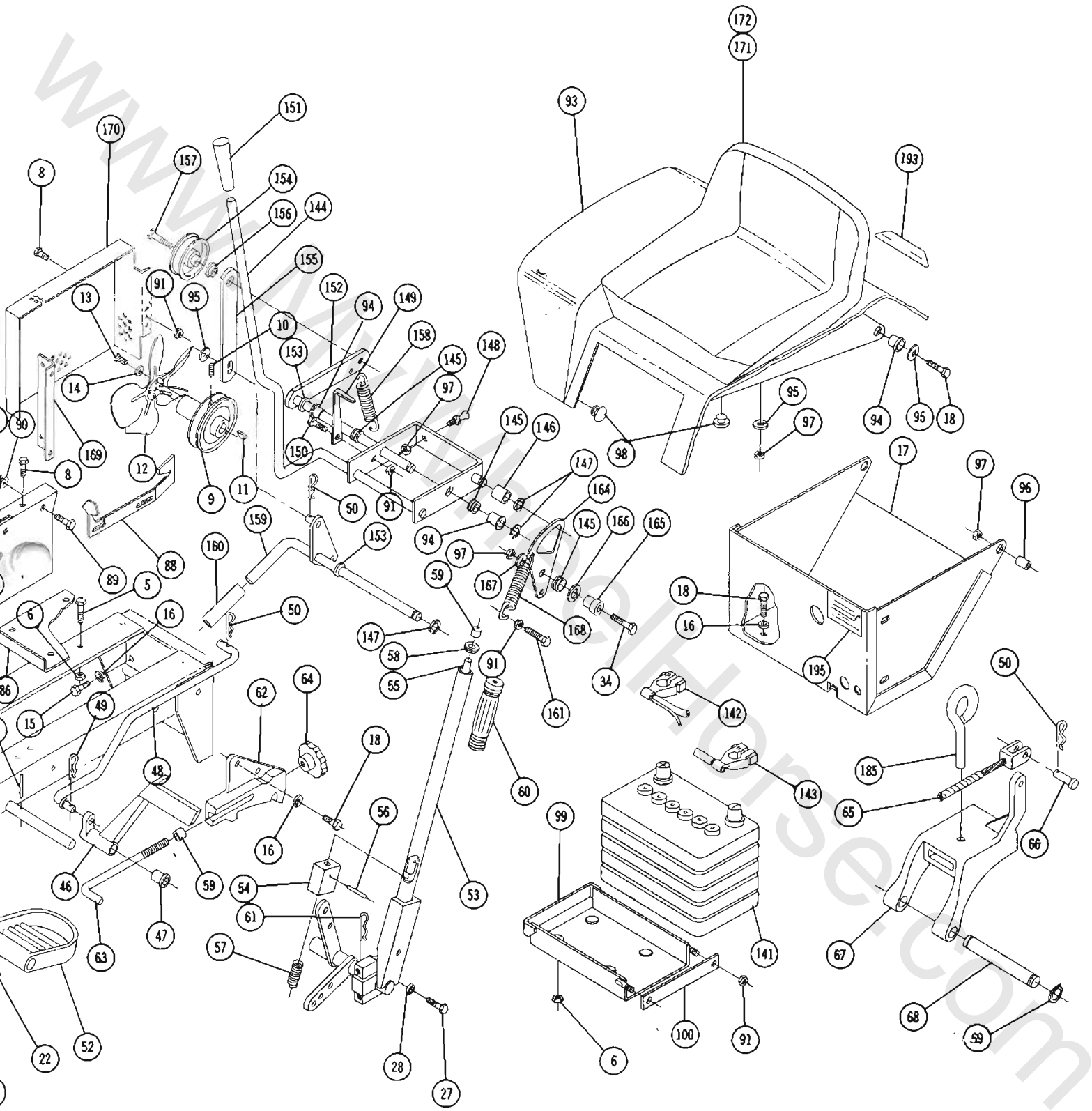
Figure 4



STERING & WHEEL ASS'Y.



MAIN FRAME, FENDE



ER & HOOD ASS'Y.

PARTS LIST for 1076 and 1276 LAWN and GARDEN TRACTORS

Except Transmission — see Transmission break down and Parts List

When ordering parts always list Part No. and name of part.

| Ref. No. | Part No. | Description | No. Req'd. | Ref. No. | Part No. | Description | No. Req'd. |
|----------|----------|---|------------|----------|----------|--|------------|
| 1 | 6456 | Ass'y. Frame | 1 | 52 | 4421 | Foot Rest | 2 |
| 2 | 6463 | Assembly Hoodstand | 1 | 53 | 5448 | Ass'y. Lift Lever | 1 |
| 3 | 915663-4 | Nut — Elastic Stop $\frac{3}{8}$ -16 | 10 | 54 | 4438 | Plunger | 1 |
| 4 | 908034-4 | Bolt Hex $\frac{3}{8}$ -16 x 1 | 8 | 55 | 5449 | Rod | 1 |
| 5 | 908017-4 | Bolt Hex $\frac{5}{16}$ -18 x $\frac{3}{4}$ | 4 | 56 | 933168 | Roll Pin $\frac{5}{32}$ x $1\frac{1}{16}$ | 1 |
| 6 | 915112-6 | Nut Nylok $\frac{5}{16}$ -18 | 12 | 57 | 3624 | Spring | 1 |
| 7 | 6105 | Ass'y. Cover Plate | 1 | 58 | 3578 | Guide — Plunger | 1 |
| 8 | 960151-4 | Bolt — Whizlock $\frac{1}{4}$ -20 x $\frac{1}{2}$ | 11 | 59 | 3680 | Cap | 2 |
| 9 | 6109 | Pulley | 1 | 60 | 1000 | Grip — Handle | 1 |
| 10 | 909862-5 | Set Screw $\frac{5}{16}$ -18 x $\frac{5}{16}$ Nylok | 3 | 61 | 933506-4 | Hairpin MTG Block | 1 |
| 11 | 937010 | Key #6 Woodruff $\frac{5}{32}$ x $\frac{5}{8}$ | 1 | 62 | 5640 | Quadrant | 1 |
| 12 | 6108 | Fan | 1 | 63 | 2179 | Rod — Height Control | 1 |
| 13 | 908998-4 | Screw Round Head #8-32 x $\frac{3}{8}$ | 4 | 64 | 5280 | Knob — Height Control | 1 |
| 14 | 920078-4 | Lockwasher #8 | 4 | 65 | 3931 | Ass'y. Cable — Lift | 1 |
| 15 | 908033-4 | Bolt Hex $\frac{3}{8}$ -16 x $\frac{3}{8}$ | 4 | 66 | 932120-4 | Pin — Clevis $\frac{1}{4}$ Dia. | 2 |
| 16 | 920083-4 | Lockwasher $\frac{3}{8}$ Dia. | 12 | 67 | 3926 | Hitch | 1 |
| 17 | 6110 | Ass'y. Tool Box | 1 | 68 | 3988 | Pin | 1 |
| 18 | 908032-4 | Bolt Hex $\frac{3}{8}$ -16 x $\frac{3}{4}$ | 8 | 69 | 936125 | Snap Ring $\frac{3}{4}$ Shaft | 2 |
| 19 | 6465 | Hub — Wheel — 5 Bolt | 2 | 70 | 6460 | Ass'y. Hood | 1 |
| 20 | 937022 | Key #15 Woodruff | 2 | 71 | 5455 | Bracket — Hood Hinge | 1 |
| 21 | 909554 | Set Screw Square Head $\frac{3}{8}$ -16 x 1 | 4 | 72 | 5457 | Bushing — Nylon | 2 |
| 22 | 915113-4 | Nut Hex $\frac{3}{8}$ -16 | 4 | 73 | 6490 | Rod Pivot | 1 |
| 23 | 5638 | Axle Front | 1 | 74 | 5467 | Lever — Hood Latch | 1 |
| 24 | 1030 | Fitting — Grease | 3 | 75 | 5469 | Knob | 1 |
| 25 | 1481 | Fitting — Grease 45° | 1 | 76 | 933182 | Roll Pin $\frac{3}{16}$ x $\frac{3}{8}$ | 1 |
| 26 | 6216 | Ass'y. Pin & Plate | 1 | 77 | 5505 | Roller Rubber | 2 |
| 27 | 908015-4 | Bolt Hex $\frac{5}{16}$ -18 x $\frac{1}{2}$ | 8 | 78 | 5468 | Roller — Steel | 2 |
| 28 | 920082-4 | Lockwasher $\frac{5}{16}$ | 9 | 79 | 915902-4 | Nut — Low Crown #10-24 | 2 |
| 29 | 5630 | Assembly Spindle R.H. | 1 | 80 | 5466 | Speed Nut Push-on $\frac{1}{4}$ Dia. | 2 |
| 30 | 5631 | Assembly Spindle L.H. | 1 | 81 | 5522 | Rod — Hood Latch | 1 |
| 31 | 5618 | "E" Ring $\frac{3}{4}$ Dia. | 3 | 82 | 5438 | Ornament — Hood | 1 |
| 32 | 6396 | Support — Steering | 1 | 83 | 5437 | Speed Nut — Push-on $\frac{1}{8}$ Dia. | 2 |
| 33 | 6397 | Bushing | 1 | 84 | 6473 | Ass'y. Belt Guard | 1 |
| 34 | 908035-4 | Bolt Hex $\frac{3}{8}$ -16 x $1\frac{1}{4}$ | 3 | 85 | 909068-4 | Bolt — Round Head $\frac{5}{16}$ -18 x $\frac{1}{2}$ | 1 |
| 35 | 6466 | Ass'y. — Shaft Upper Steering | 1 | 86 | 6825 | Cover — Dust | 1 |
| 36 | 1085 | Collar | 1 | 87 | 5439 | Grommet — Rubber | 1 |
| 37 | 909848-5 | Set Screw $\frac{1}{4}$ -20 x $\frac{1}{4}$ Nylok | 1 | 88 | 6402 | Latch — Fender | 1 |
| 38 | 6469 | Ass'y. Steering Shaft Lower | 1 | 89 | 960152-4 | Bolt — Whizlock $\frac{1}{4}$ -20 x $\frac{5}{8}$ | 6 |
| 39 | 5210 | Washer Shim (.015) | 1 | 90 | 920007-4 | Washer $\frac{1}{4}$ SAE | 2 |
| 40 | 1278 | Washer Shim (.050) | 1 | 91 | 915111-6 | Nut — Nylok $\frac{1}{4}$ -20 | 14 |
| 41 | 932035-4 | Cotter Pin $\frac{3}{16}$ x $1\frac{1}{4}$ | 1 | 92 | MW-4404 | Spring Washer $\frac{5}{32}$ I.D. | 2 |
| 42 | 6472 | Bearing — Side Flange | 1 | 93 | 6120 | Ass'y. Fender | 1 |
| 43 | 5628 | Ass'y. Ball Joint R.H. | 1 | 94 | 5666 | Bushing — Nylon | 4 |
| 44 | 5629 | Ass'y. Ball Joint L.H. | 1 | 95 | 920009-4 | Washer $\frac{3}{8}$ Dia. | 3 |
| 45 | 915002-6 | Nut Nylok $\frac{3}{8}$ -24 | 4 | 96 | 4937 | Spacer | 2 |
| 46 | 6403 | Pedal — Clutch | 1 | 97 | 915113-6 | Nut $\frac{3}{8}$ -16 — Nylok | 6 |
| 47 | 5409 | Bushing | 3 | 98 | 5667 | Bumper — Rubber | 4 |
| 48 | 6113 | Rod Brake | 1 | 99 | 6477 | Ass'y. Battery Box | 1 |
| 49 | 933504-4 | Hairpin | 1 | 100 | 6480 | Link — Battery Clamp | 1 |
| 50 | 933503-4 | Hairpin | 5 | 101 | 5456 | Housing — Control Panel | 1 |
| 51 | 933188 | Roll Pin $\frac{3}{16}$ x 1 | 1 | 102 | 908016-4 | Bolt Hex $\frac{5}{16}$ -18 x $\frac{3}{8}$ | 4 |

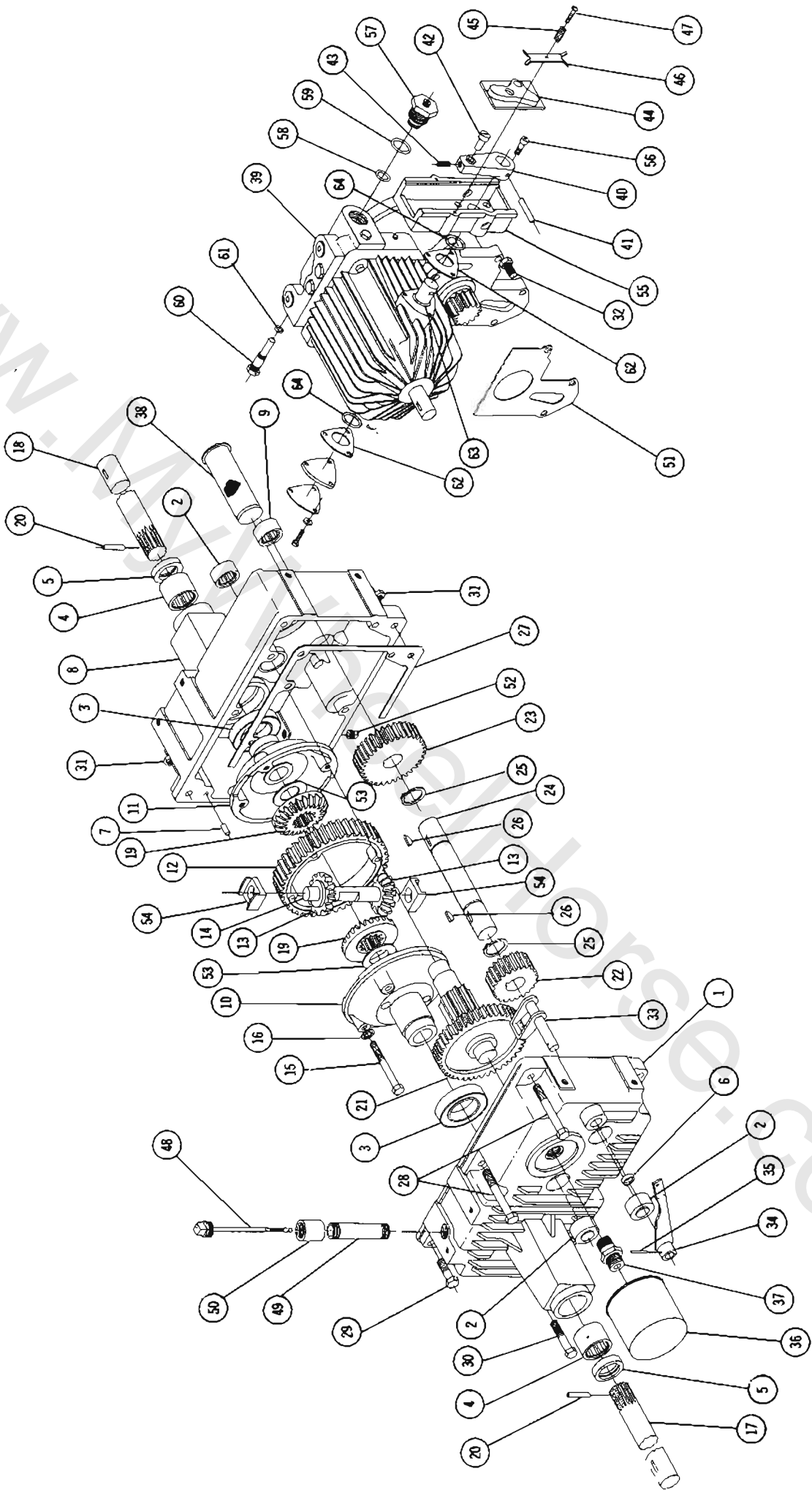
PARTS LIST for 1076 and 1276 LAWN and GARDEN TRACTORS

Except Transmission — see Transmission break down and Parts List

When ordering parts always list Part No. and name of part.

| Ref. No. | Part No. | Description | No. Req'd. | Ref. No. | Part No. | Description | No. Req'd. |
|----------|----------|--|------------|----------|----------|--|------------|
| 103 | 5442 | Speed Nut #10-16 | 4 | 154 | MW-8821 | Pulley — Idler | 1 |
| 104 | 5458 | Support — Fuel Tank | 1 | 155 | 6133 | Link — Brake | 1 |
| 105 | 6121 | Panel — Complete — Dash | 1 | 156 | 6134 | Spacer — Link | 1 |
| 106 | 926308-4 | Screw Self Top Type "B" #10-16 | 4 | 157 | 911400 | Bolt $\frac{3}{8}$ -16 x $1\frac{1}{2}$ Special | 1 |
| 107 | 6481 | Ass'y. Engine 10 H.P. Kohler (1076) | 1 | 158 | 6135 | Spring — Brake | 1 |
| 108 | 6482 | Ass'y. Engine 12 H.P. Kohler (1276) | 1 | 159 | 6136 | Ass'y. Lever Brake | 1 |
| 109 | 908036-4 | Bolt Hex $\frac{3}{8}$ -16 x $1\frac{1}{2}$ | 2 | 160 | 6141 | Tube — Handle Grip | 1 |
| 110 | 5222 | Elbow 90° | 1 | 161 | 908003-4 | Bolt Hex $\frac{1}{4}$ -20 x $\frac{3}{4}$ | 2 |
| 111 | 5223 | Nipple $\frac{3}{8}$ Pipe x $3\frac{1}{2}$ | 1 | 162 | 915234-4 | Nut — Jam $\frac{1}{4}$ -20 | 1 |
| 112 | 5224 | Cap $\frac{3}{8}$ Pipe | 1 | 163 | 920081-4 | Lockwasher $\frac{1}{4}$ | 1 |
| 113 | 2873 | Muffler | 1 | 164 | 6142 | Plate — Cam — Neutral | 1 |
| 114 | 943367-4 | Nipple 1" Pipe x $2\frac{1}{2}$ | 1 | 165 | 6143 | Spacer — Cam Plate | 1 |
| 115 | 3947 | Nipple 1" Close Pipe | 1 | 166 | 3765 | Washer $\frac{1}{2}$ Dia. Special | 1 |
| 116 | 3939 | Elbow 1" Pipe x 45° | 1 | 167 | 2844 | Washer $\frac{3}{8}$ Dia. Special | 3 |
| 117 | 6491 | Pulley — Engine | 1 | 168 | 1230 | Spring | 1 |
| 118 | 6507 | Key $\frac{1}{4}$ x $\frac{1}{4}$ x $\frac{1}{2}$ | 1 | 169 | 6745 | Angle — Shield Mounting | 1 |
| 119 | 5170 | Ass'y. Control — Choke | 1 | 170 | 6746 | Shield — Fan | 1 |
| 120 | 6484 | Ass'y. Control — Throttle | 1 | 171 | 5557 | Ass'y. Seat Base | 1 |
| 121 | 920127-4 | Lockwasher $\frac{5}{16}$ Shake Proof | 2 | 172 | 5556 | Cushion — Seat | 1 |
| 122 | 1364 | Nut — Round $\frac{3}{16}$ -18 | 2 | 173 | 5432 | Ass'y. Wheel & Tire | 2 |
| 123 | 2879 | Clip | 1 | 174 | 1004 | Lug Bolt — Wheel $\frac{7}{16}$ -20 | 10 |
| 124 | 1391 | Screw — Sems $\frac{1}{4}$ -20 x $\frac{3}{8}$ | 1 | 175 | 5637 | Ass'y. Wheel, Tire & Tube | 2 |
| 125 | 5431 | Nut — Hex Special $\frac{1}{4}$ -20 | 1 | 176 | 5635 | Wheel | 2 |
| 126 | 5417 | Tank — Fuel | 1 | 177 | 4999 | Bearing — Ball | 4 |
| 127 | 5459 | Clamp — Tank | 1 | 178 | 5636 | Tire — 16 x 5.50 - 8 | 2 |
| 128 | 5186 | Cap | 1 | 179 | 5512 | Tube | 2 |
| 129 | 909059-4 | Bolt Round Head $\frac{1}{4}$ -20 x $1\frac{1}{4}$ | 1 | 180 | 908033-6 | Bolt Hex $\frac{3}{8}$ -16 x $\frac{7}{8}$ Nylok | 2 |
| 130 | 915182-4 | Nut Square $\frac{1}{4}$ -20 | 1 | 181 | 2816 | Hub Cap | 2 |
| 131 | 4941 | Ass'y. Filter & Valve | 1 | 182 | 4983 | Steering Wheel | 1 |
| 132 | 6485 | Hose — Fuel | 1 | 183 | 2897 | Insert | 1 |
| 133 | 4256 | Clip Hose | 2 | 184 | 933213 | Roll Pin $\frac{1}{4}$ x 1 | 1 |
| 134 | 9050153 | Clamp Carbin $\frac{7}{16}$ Dia. | 2 | 185 | 1813 | Tool Pin | 1 |
| 135 | 4988 | Ass'y. Switch — Ignition | 1 | 186 | 5451 | Insulator — Switch | 1 |
| 136 | 4882 | Nut — Hex Special $\frac{5}{8}$ -32 | 1 | 187 | 6489 | Belt | 1 |
| 137 | 4881 | Insulator — Switch | 1 | 188 | 6555 | Decal — Grille | 1 |
| 138 | 4989 | Key — Ignition | 1 | 189 | 6556 | Decal Hood Trim R.H. | 1 |
| 139 | 5423 | Assembly Lamp — Generator | 1 | 190 | 6557 | Decal Hood Trim L.H. | 1 |
| 140 | 5480 | Assembly Cigar Lighter | 1 | 191 | 6558 | Decal Hood Trim — 1076 | 2 |
| 141 | 6486 | Battery | 1 | 192 | 6559 | Decal Hood Trim — 1276 | 2 |
| 142 | 6487 | Wiring Harness | 1 | 193 | 5604 | Decal — Fender | 1 |
| 143 | 6488 | Wire — Battery To Ground | 1 | 194 | 4581 | Decal — Steering Wheel | 1 |
| 144 | 6123 | Ass'y. Cam Control Arm | 1 | 195 | 6154 | Decal — Free Wheeling | 1 |
| 145 | 5983 | Bushing — Nylon | 2 | 196 | 5481 | Knob & Plug | 1 |
| 146 | MW-2195 | Bushing Bronze | 1 | 197 | 5483 | Shell | 1 |
| 147 | 5701 | "E" Ring $\frac{1}{2}$ Shaft | 3 | 198 | 5482 | Ass'y. Socket | 1 |
| 148 | 6127 | Pin — Com Block | 1 | 199 | 915562 | Nut #8-32 Brass | 2 |
| 149 | 6128 | Indicator — Speed | 1 | 200 | 920078-4 | Lockwasher #8 | 1 |
| 150 | 908001-4 | Bolt Hex $\frac{1}{4}$ -20 x $\frac{1}{2}$ | 1 | 201 | 5484 | Ass'y. Wire | 1 |
| 151 | 6129 | Handle — Plastic | 1 | 202 | 5433 | Wheel | 2 |
| 152 | 6130 | Ass'y. Arm & Rod | 1 | 203 | 5434 | Tire 8 x 12 | 2 |
| 153 | 920011-4 | Washer $\frac{1}{2}$ SAE | 2 | 204 | 5435 | Valve | 2 |

5054 TRANSMISSION



PARTS LIST

5054 TRANSMISSION

When ordering parts always list Part No. and name of part.

| Item No. | Part No. | Description | No. Req'd. | Item No. | Part No. | Description | No. Req'd. |
|----------|----------|-------------------------------------|------------|----------|----------|----------------------------------|------------|
| 1 | 6454 | Case R.H. | 1 | 33 | 5966 | Ass'y. — Park Brake | 1 |
| 2 | 1532 | Bearing — Needle 1" I.D. | 3 | 34 | 5969 | Ass'y. Lever — Brake | 1 |
| 3 | 1533 | Bearing — Ball 1½" I.D. | 2 | 35 | 933152 | Roll Pin ⅛ x ¼ | 1 |
| 4 | 1526 | Bearing — Needle 1⅛ I.D. | 2 | 36 | 5990 | Ass'y. — Filter (Throw A Way) | 1 |
| 5 | 6449 | Seal 1⅛" I.D. | 2 | 37 | 5991 | Fitting — Filter | 1 |
| 6 | 5959 | Seal — Brake Shaft ½" I.D. | 1 | 38 | 5992 | Strainer | 1 |
| 7 | 3915 | Pin — Dowel | 2 | 39 | 6200 | Ass'y. Hydro-Gear Unit Complete | 1 |
| 8 | 6455 | Case — L.H. | 1 | 40 | 5994 | Arm — Cam Follower | 1 |
| 9 | 5960 | Bearing — Needle 1" I.D. | 1 | 41 | 933215 | Roll Pin ¼ x 1¼ | 1 |
| 10 | 2822 | Case — Differential R.H. | 1 | 42 | 5995 | Eccentric — Cam Follower | 1 |
| 11 | 6446 | Case — Differential L.H. | 1 | 43 | 909849-5 | Set Screw Nylok ¼-20 x ⅝ | 1 |
| 12 | 2821 | Gear — Bull Differential | 1 | 44 | 5996 | Cam | 1 |
| 13 | 2819 | Gear — Differential Pinion | 2 | 45 | 5997 | Spring | 2 |
| 14 | 2827 | Shaft — Differential | 1 | 46 | 5998 | Plate Tension | 2 |
| 15 | 908043 | Bolt — Hex ⅜-16 x 3½ | 4 | 47 | 909004-4 | Screw Round Head #8-32 x ⅜ | 2 |
| 16 | 920156 | Washer — Internal Shakeproof ⅜ Dia. | 4 | 48 | 6155 | Ass'y. Dipstick & Filter | 1 |
| 17 | 6450 | Axle — Rear R.H. | 1 | 49 | 943346-4 | Nipple ½ Pipe x 3½ | 1 |
| 18 | 6451 | Axle — Rear L.H. | 1 | 50 | 943004 | Coupling ½ Pipe | 1 |
| 19 | 2820 | Gear — Axle | 2 | 51 | 5955 | Gasket — Pump | 1 |
| 20 | 933217 | Roll Pin ¼ x 1½ | 2 | 52 | 943460 | Plug ¼ Pipe | 1 |
| 21 | 6452 | Gear | 1 | 53 | 2828 | Washer Thrust | 2 |
| 22 | 5963 | Gear — 22 Teeth | 1 | 54 | 2826 | Block Differential | 2 |
| 23 | 5964 | Geor — 33 Teeth | 1 | 55 | 5993 | Support — Cam Block | 1 |
| 24 | 5965 | Shaft 1" Dia. | 1 | 56 | 911037 | Screw — Socket Hd. Cap ¼-20 x ½ | 3 |
| 25 | 936131 | Snap Ring 1" Shaft | 2 | 57 | 6444 | Dampening Valve (with "O" Rings) | 2 |
| 26 | 937014 | Key #9 Woodruff | 2 | 58 | 970014 | "O" Ring ⅝ x 1⅛ x ⅛ | 2 |
| 27 | 5999 | Gasket — Case | 1 | 59 | 970053 | "O" Ring ⅞ x 1⅛ x ⅜ | 2 |
| 28 | 908143-4 | Bolt Hex ⅜-16 x 5 | 2 | 60 | 6448 | Valve — Towing | 1 |
| 29 | 908038-4 | Bolt Hex ⅜-16 x 2 | 3 | 61 | 970010 | "O" Ring ⅝ x ⅜ x ⅛ | 1 |
| 30 | 908043-4 | Bolt Hex ⅜-16 x 3½ | 1 | 62 | 6826 | Shim | 2 |
| 31 | 915113-6 | Nut Nylok ⅜-16 | 6 | 63 | 970141 | "O" Ring | 1 |
| 32 | 908034-6 | Bolt Hex Nylok ⅜-16 x 1 | 3 | 64 | 6829 | Seal — Rubber | 2 |

OWNERS MAINTENANCE RECORD

OIL CHANGES

DATE _____

TYPE & KIND OF OIL _____

DATE _____

GREASE JOBS _____

TUNE UPS

DATE _____

PARTS REPLACED _____

BATTERY SERVICE

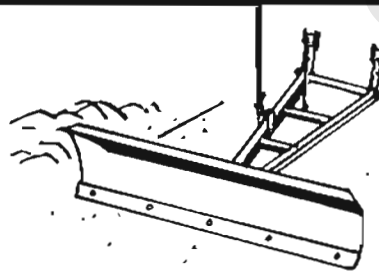
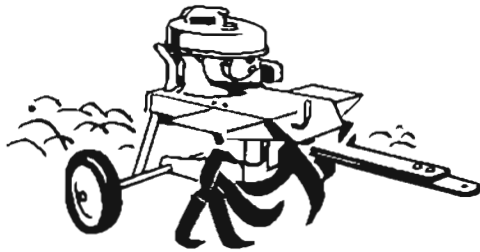
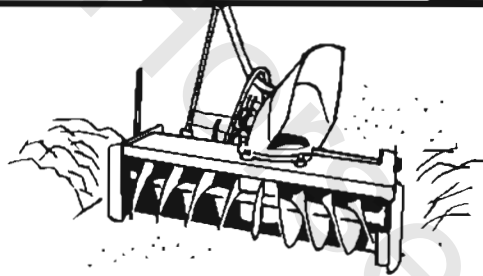
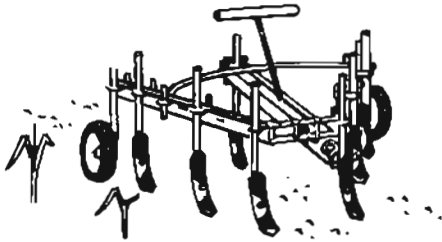
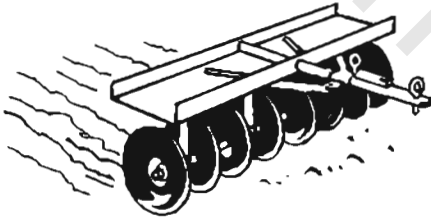
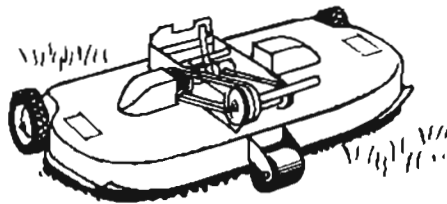
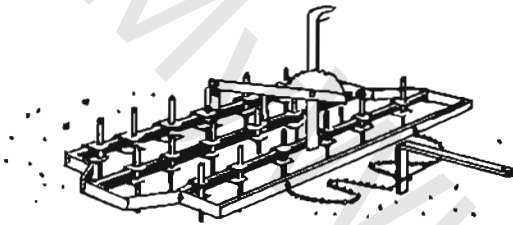
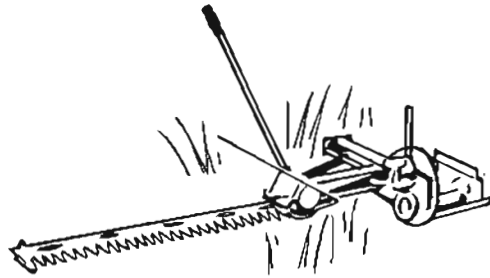
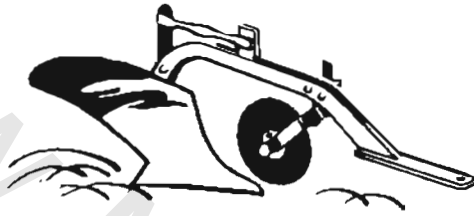
DATE _____

SERVICE REQUIRED _____

MISCELLANEOUS

DATE _____

ALL SEASON USE



www.M...Horse.com

