

THE POND
Wheel-Horse
GARDEN TRACTOR

**Parts List
and
Instructions**

YOUR GUARANTEE

The Pond Garden Tractor is Guaranteed for one year from the date of purchase against defective materials or workmanship. We will replace, free of charge, any defective part if returned, postage prepaid. The engine is covered by the manufacturer's guarantee.

THE POND COMPANY

SOUTH BEND, INDIANA

TRACTOR INSTRUCTIONS

OPERATION

Be sure tractor and engine are serviced before operating. Before starting engine, make sure the control rod is pulled to the rear and locked in notch, so that tractor is "out of gear." To start tractor moving forward (after engine is running) lift up on control rod until notch disengages and allow rod to go forward. This action will allow idler pulley to tighten the slack in the belt and drive the tractor forward. To stop — pull rod to rear and lock in notch.

When pulling tractor to the rear, the pawls on the wheels will lock in the ratchet hubs and drive the transmission gears backward. You can observe the large drive pulley spinning backward. When the tractor is new, the transmission may be "stiff" or tight and it will be hard to pull the tractor to the rear until after a short "breaking in" period. The belt may also want to stick in the large pulley and act as a brake against pulling the tractor to the rear during the break-in period. This is due to paint and roughness in the pulley. This will correct itself and soon wear smooth. Control rod must be to the rear before attempting to pull tractor backward, when engine is not running, as when pulling tractor from stall in garage or shed.

SERVICING (See engine manual for servicing engine)

Gear Housing: Check oil level in gear housing every time you change motor oil in engine. If additional oil is needed add No. 90 Gear Lube.

To check for proper level of gear lube in gear case:—

1. Make sure tractor is level (not tilted down in front or back).

2. Remove drain plug (located on front side of casting near the bottom).
3. Observe oil level. If oil runs out when the drain plug is removed, the level is too high and should be allowed to drain to the proper level.
4. Replace drain plug.

Important— Step 1 above is very important since it controls the level of the gear lube carried in the gear case. Oil level being too low may result in injury to or undue wear of gears and chain. Oil level too high may result in oil leaks.

Grease wheel hubs and idler pulley with pressure gun once each week.

Tires should be inflated to six pounds pressure.

ADJUSTMENTS

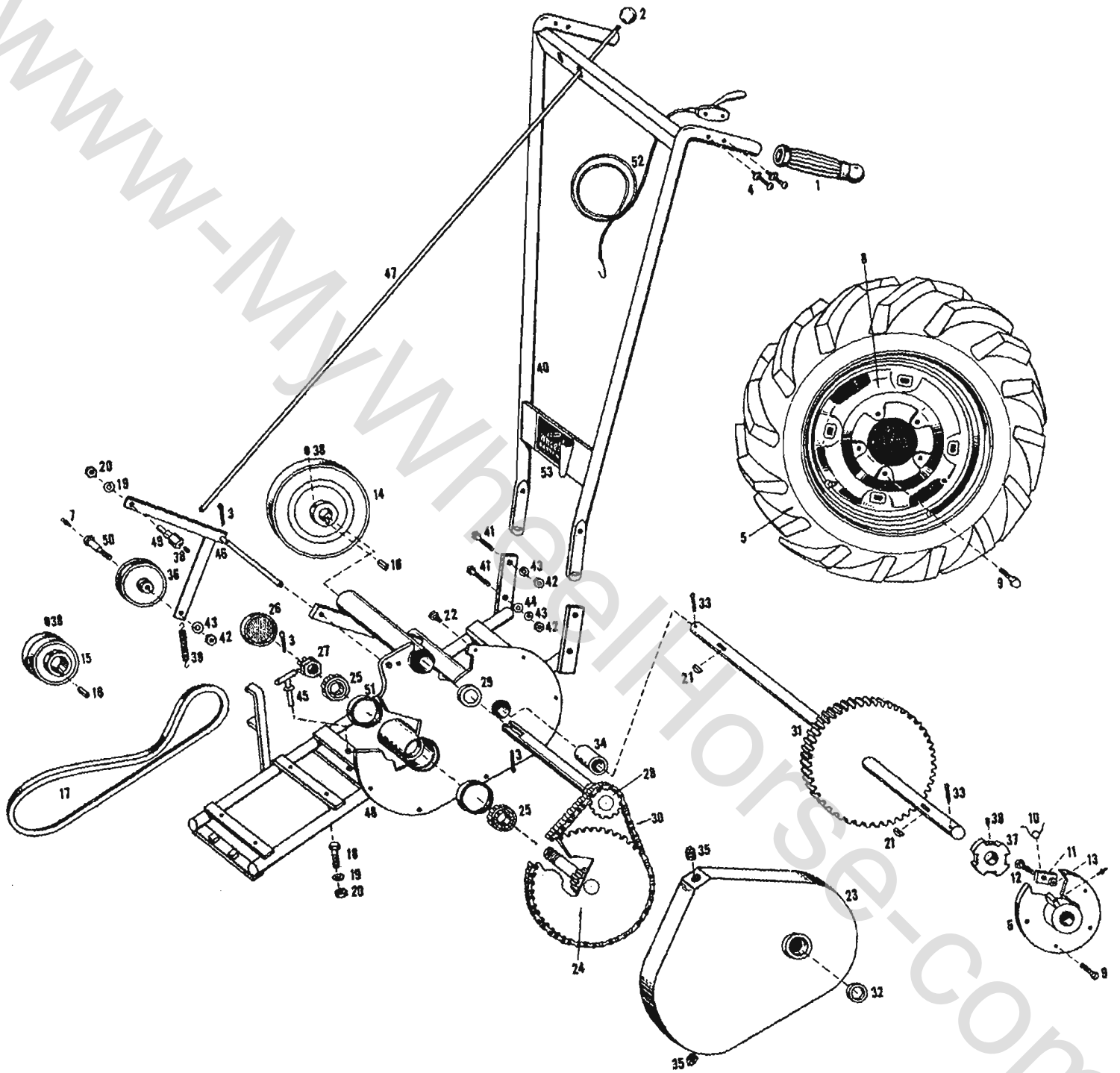
Handles may be adjusted by loosening lower cap screws which pass through slot in lower end of handles. Raise or lower handles to desired position. Retighten cap screws. Now readjust idler arm on control rod so that idler pulley releases belt tension when rod is pulled to rear and locked in notch.

Wheels are assembled with tread the narrow way (24" width overall) at the factory. To widen tread to 30 inches, reverse wheels by unbolting from hubs and rebolt on opposite hubs. **Caution:** When replacing the nut on each wheel, be sure to hold the head of the bolt on the inside where it passes through the pawl to keep bolt from backing out and thereby causing pawl and pawl spring to be too loose.

THE POND COMPANY

SOUTH BEND, INDIANA

WWW-MYKNIBS.COM



PARTS LIST

TRACTOR COMPLETE

Ref. No.	Part No.	Description	No. Req.	List Price
1	1000	Grip, Handle	2	\$.25
2	1001	Knob, Control Rod	1	.25
3	1002	Cotter Pin (1/8 x 1)	3	.01
4	1003	Stove Bolt, R. H. (5/8 x 1 1/2)	2	.02
5	1650	Tire & Tube Assy. (6-12)	2	18.50
5	1651	Tire & Tube Assy. (6-16)	2	20.50
6	1837-2	Wheel Hub Casting (6-12)	2	1.70
6	1837-6	Wheel Hub Casting (6-16)	2	1.95
7	1030	Zerk (1/4 x 28)	3	.10
8	1700	Rim Assembly, 5JA (6-12).....	2	4.50
8	1701	Rim Assembly, 5K (6-16)	2	6.00
9	1004	Bolt, Wheel (Special) (5/16-20 x 3/4)	4	.10
10	1035-R	Spring, Pawl, Right (1/2" I. D.)....	1	.10
10	1035-L	Spring, Pawl, Left (1/2" I.D.).....	1	.10
11	1838-2	Pawl (6-12 Wheel)	2	.25
11	1838-6	Pawl (6-16 Wheel)	2	.25
12	1036	Bolt, Pawl (5/16-20 x 2)	2	.10
13	1037	Nut, Hex (5/16-20)	2	.05
14	1600	Pulley, 7 A 3/4 Bore (6-12)	1	2.50
14	1603	Pulley, 8 A 3/4 Bore 6-16)	1	2.90
15	1609	Pulley, Two Groove (2 1/2 A. O. D. 3/8 Bore)	1	1.50
15	1610	Pulley, Two Groove (2 1/2 A. O. D. 3/4 Bore)	1	1.50
16	1005	Key, Square (3/8 x 1)	2	.02
17	1550	Belt, 42 A, (7" O. D. Pulley)	1	1.65
17	1555	Belt, 44 A, (8" O. D. Pulley)	1	1.72
18	1006	Cap Screw, Hex. Head (5/16-18 x 1 1/4)	4	.05
19	1045	Lock Washer (3/8)	5	.02
20	1007	Nut, Hex (5/16-18)	5	.02
21	1008	Woodruff Key (No. 15)	2	.10
22	1009	Cap Screw, Hex Head (1/4-20 x 1/2)	10	.02
23	1801	Housing, Gear, Casting	1	7.50
24	1802	Jack Shaft Assy.	1	3.50
25	1500	Cone, Tapered Roller Bearing..	2	1.25

Ref. No.	Part No.	Description	No. Req.	List Price
26	1501	Closure, Jack Shaft	1	.15
27	1010	Nut, Hex Slotted (3/4-16)	1	.25
28	1806	Cross Shaft Assy.	1	2.25
29	1502	Ball Bearing (1 1/4 OD x 3/4 B x 3/4)	2	.75
30	1809	Chain, Roller, No. 35 (30" Endless)	1	3.25
31	1810	Axle & Gear Assy.	1	10.50
32	1011	Oil Seal, Axle	1	.40
33	1012	Cotter Key (3/8 x 1 1/2)	2	.05
34	1503	Bronze Axle Bearing (1 1/2 ID x 1" OD x 1 1/4)	2	.50
35	1013	Tapered Plug (1/4")	1	.10
36	1602	Idler Pulley	1	1.00
37	1839	Ratchet Hub	2	1.25
38	1042	Set Screw, Socket Head (5/16-18 x 3/8)	4	.15
39	1014	Spring, Idler Pulley	1	.30
40	1841	Handle Assembly	1	7.50
41	1028	Cap Screw, Hex Head (3/8-16 x 1 1/4)	4	.05
42	1016	Nut, Hex (3/8-16)	5	.25
43	1039	Lock Washer (3/8)	3	.01
44	1041	Washer, Flat (3/8)	1	.03
45	1813	Tool Pin	1	.75
46	1815	Idler Lever Assy.	1	1.25
47	1819	Rod, Control	1	1.50
48	1822	Frame Assy.	1	19.50
49	1046	Swivel Bolt	1	.30
50	1049	Idler Bolt, Special	1	.40
51	1510	Cup, Tapered Roller Bearing ..	1	.85
52	1083	Throttle Control Assy.	1	1.95
	1775	Engine, Briggs & Stratton (Model 6)	1	
	1776	Engine, Briggs & Stratton (Model 8)	1	
	1777	Engine, Clinton (Model 700) ..	1	
	1778	Engine, Clinton (Model 1100)..	1	
	1779	Engine, Kohler (Model K-90)....	1	