

Wheel Horse[®]

LAWN AND GARDEN TRACTORS

models

604, 654, 704



OPERATION AND SERVICE MANUAL WITH PARTS LIST



WHEEL-HORSE PRODUCTS, INC.

SOUTH BEND, IND.

THINGS YOU SHOULD KNOW

The transmission is powered on needle bearings and roller bearings. The reduction is 108 to 1, and both final drives are steel forgings. All shafts are turned, ground, hardened, and polished for greater strength and best oil sealing.

Speeds are from 1 mph to 6 mph with 3 speeds forward and 1 reverse.

WARRANTY

We warrant WHEEL HORSE PRODUCTS for ONE YEAR from date of purchase against defective parts and workmanship. We will replace, free of charge, any defective part if returned to the factory PREPAID*. Wheel Horse Products, Inc., reserves the right to make changes or improvements upon its products without imposing any obligations upon itself to install the same upon its products that have been previously manufactured.

The engine and battery carry a separate warranty by the manufacturer. FOR ENGINE OR BATTERY SERVICE, CONTACT YOUR LOCAL ENGINE OR BATTERY SERVICE HEADQUARTERS.

*All warranty claims, work, shipments, must be handled through your authorized Wheel Horse dealer.

NOTE: 90 Day Warranty for Commercial Use.

BEFORE YOU START

There is **NO OIL** in the crankcase of the engine when shipped from the factory. Read Engine Manual and follow all instructions pertaining to type of lubrication specified. The engine is the heart of your tractor and it is very important that you keep it in good condition.

Lubricate all grease fittings with a regular pressure gun lubricant every eight to ten hours of operation. Refer to Figure 1 for the location of grease fittings.

A light machine oil should be used on all moving parts to keep joints from wearing and squeaking.

Remove oil filler plug, located at the left rear side of the transmission, and fill to level of hole with a good grade of S.A.E. 40 Gear Lube (will require about 3 pints).

The transmission should be checked after every 40 hours of use. The transmission should be drained once a year by removing plug on bottom to drain oil. Refill as above paragraph. This is a regular automotive type transmission with sliding gears and should have the same care as your car.

BATTERY

The battery installed in the 654 tractor is a dry charged battery. It is important that you properly prepare this battery to insure good service and long life.

1. Remove vent caps. Remove or destroy any sealing device which may have been used to close or restrict the vent openings.

2. Fill each cell of the battery to the proper level with the battery electrolyte.

NOTE. Temperature of battery and electrolyte at time of filling should be above 60°F. Never fill battery in the vehicle.

3. **BOOST CHARGE:** 15 amps. for 10 minutes or 7 amps. for 30 minutes. Adjust electrolyte level, if necessary, after charge.

4. **Install battery with battery posts toward the rear of tractor.** Start motor. Check to see if generator is charging properly. After battery has been in service, add only approved water.

DO NOT ADD ACID.

TIRES

The front tires are 4:00 x 8 and should be inflated to 20 pounds of air pressure. **The rear tires are 6:00 x 12 and should have 6 to 8 pounds of air pressure.** The tires can also be filled with ballast if desired. Ordinarily this is not necessary as the weight of the operator will add sufficient weight for adequate traction.

STARTING ENGINE

1. Before starting the engine fill gas tank with a good grade of regular gas and open valve on sediment bowl.

2. Place gear shift lever in neutral position.

3. Pull throttle lever $\frac{1}{2}$ way out and turn to the right to lock it in position. **Note:** The Throttle control has a locking device. Turn the throttle control to the left to unlock, adjust to the desired position and turn to the right to lock.

4. Pull choke lever all the way out to choke engine. If engine is warm and has been running, choking will not be necessary.

5. A. Model 604 and 704 tractors have a recoil starter with an OFF and ON switch. To start push switch to ON position and pull recoil starter.

B. Model 654 tractor has an OFF and ON key, also a starter button. Turn key to ON position and push starter button.

6. When engine starts push choke in to off position and regulate throttle control by turning to the left to unlock and push in or out to desired speed.

7. Depress clutch pedal on left side of tractor before selecting desired gear range.

8. When starting tractor in winter it is desirable to depress clutch so engine does not have to turn transmission.

CLUTCHING

Don't force the gear shift lever if the gears do not immediately mesh. Depress clutch pedal all the way down and let up, then depress again and shift. To avoid sudden starts, release clutch pedal slowly. While in motion do not shift gears without depressing clutch pedal.

The clutch pedal also operates the brakes **WHEN DEPRESSED ALL THE WAY DOWN.** For this reason, you should depress the clutch pedal **ONLY $\frac{2}{3}$ OF THE WAY DOWN WHEN SHIFTING** while in motion. This clutch-brake pedal combination makes clutching automatic as you apply the brakes to stop.

PARKING BRAKE

The parking brake is located on the left side of the tractor as shown in Figure 1. To set the parking brake depress the clutch-brake pedal as far as possible and push the parking brake forward. To release the brake depress the clutch-brake pedal and pull the parking brake back.

ATTACHING TOOLS

Complete information on the assembly, attachment, operation and service of the many attaching tools will be provided with each attachment.

All drawn implements attach in seconds. Simply lift the tractor hitch pin, insert the tongue, and replace pin.

All power implements will use the attachment clutch pedal located on the right side of the tractor.

CARE OF TRACTOR

1. Keep tractor greased and oiled regularly. Refer to Figure 1 for the location of grease fittings. Check transmission and engine case oil levels.

2. Keep engine air cleaner clean. This will add to engine life.

3. Keep tires properly inflated. See previous instructions.

4. Keep tractor covered and in a dry place when not in use.

5. Keep grass and dirt out of engine cowling as these will stop the flow of air and decrease engine life.

6. BRAKE ADJUSTMENT. The brake band, located on the left side of the transmission, brakes the transmission and in turn stops the wheels.

To adjust first set the parking brake then adjust the nut on the brake rod until it locks the rear wheels. Disengage parking brake, remove cotter

pin from clutch rod at clutch brake pedal and by turning in or out adjust clutch brake pedal to operators desired position.

7. When replacing belts or mounting drive implements make sure all pulleys are in line.

8. On the 654 tractor which has a battery, check liquid after every 40 hours of use. If tractor has been in storage it may be necessary to recharge.

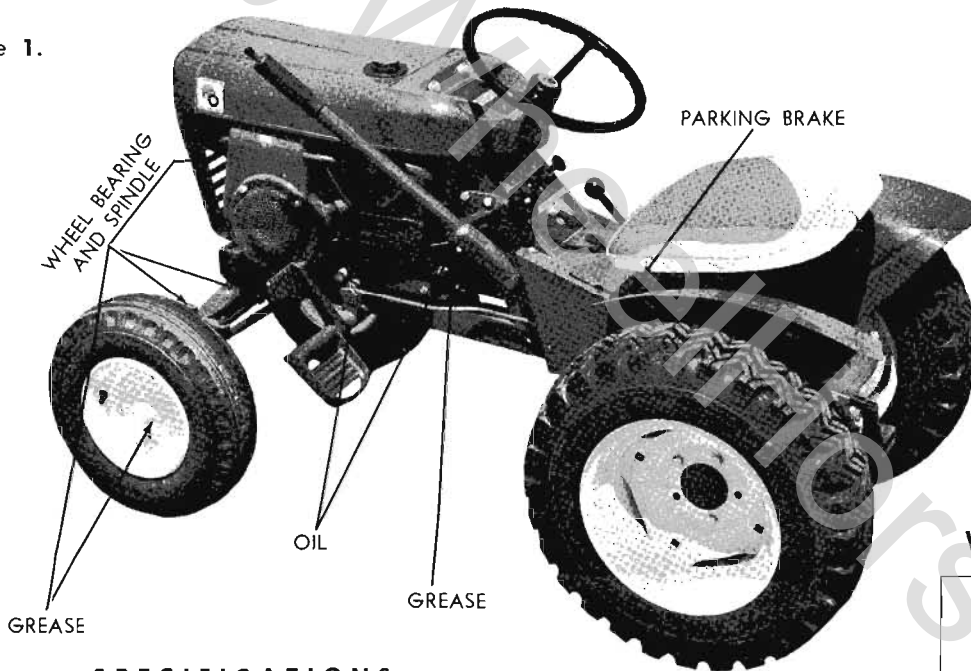
9. Your tractor is only as good as the service you give it. See your Wheel Horse Dealer for a through check-up after each season of use.

10. When replacing belts be sure to purchase them from your Wheel Horse Dealer, as these belts are specifically designed for each application. (NOTE: Make sure all pulleys are in line.)

FOR YOUR SAFETY

- A. Keep all guards on at all times.
- B. Never abuse your tractor by improper handling.
- C. Keep hands and feet from moving parts.
- D. Remove key when not in use.
- E. Be careful on high uneven ground.

Figure 1.

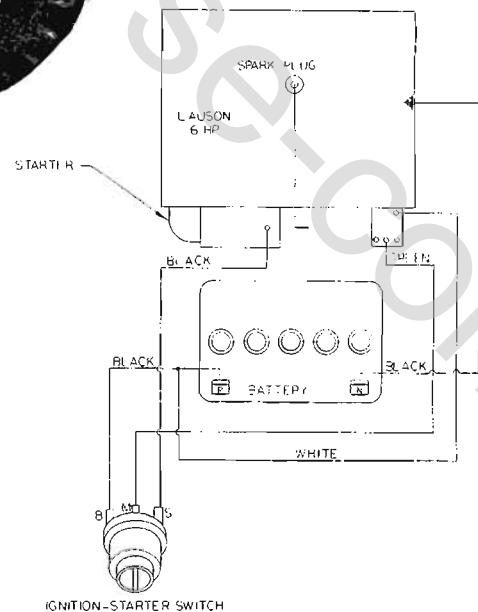


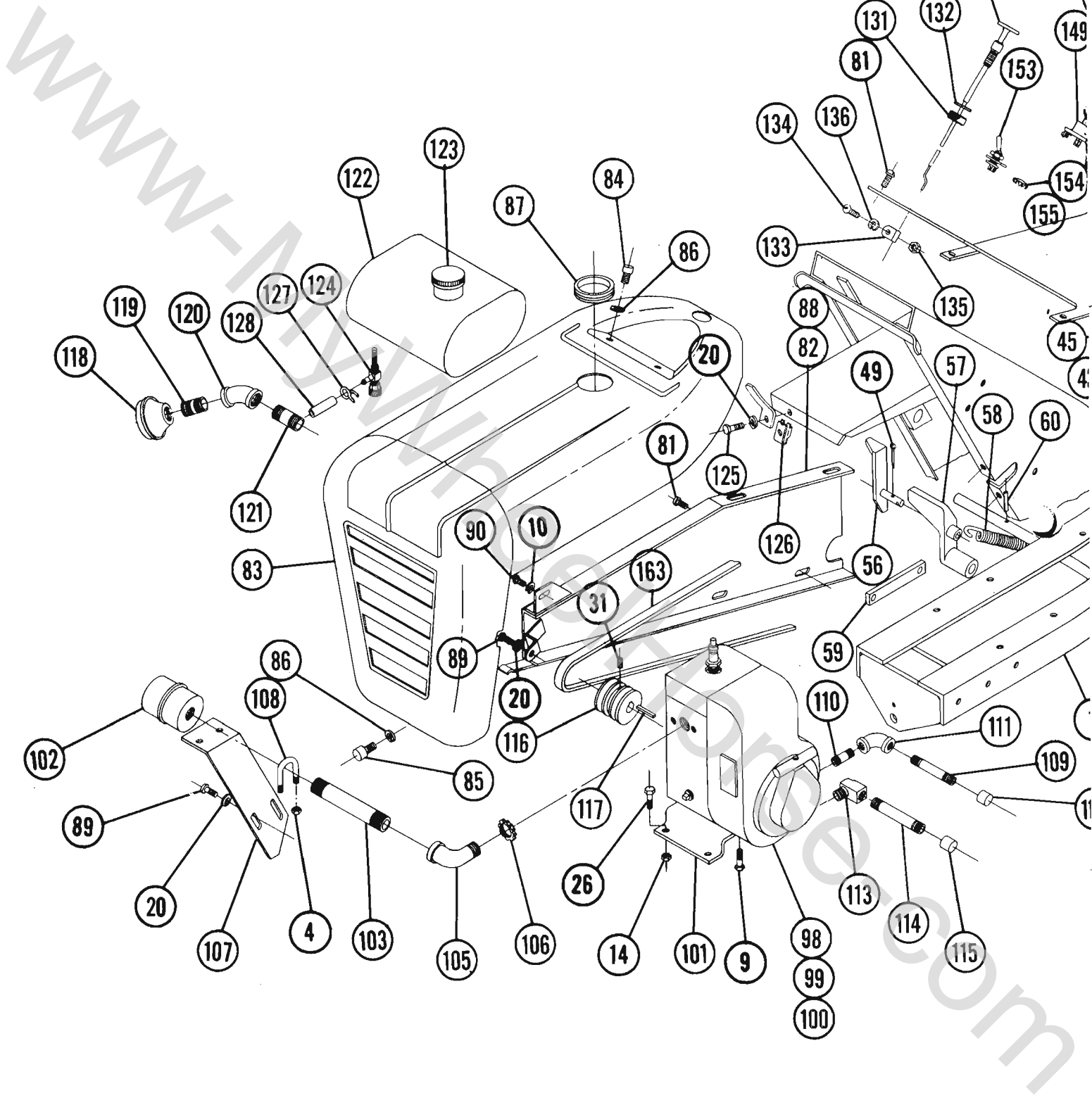
SPECIFICATIONS

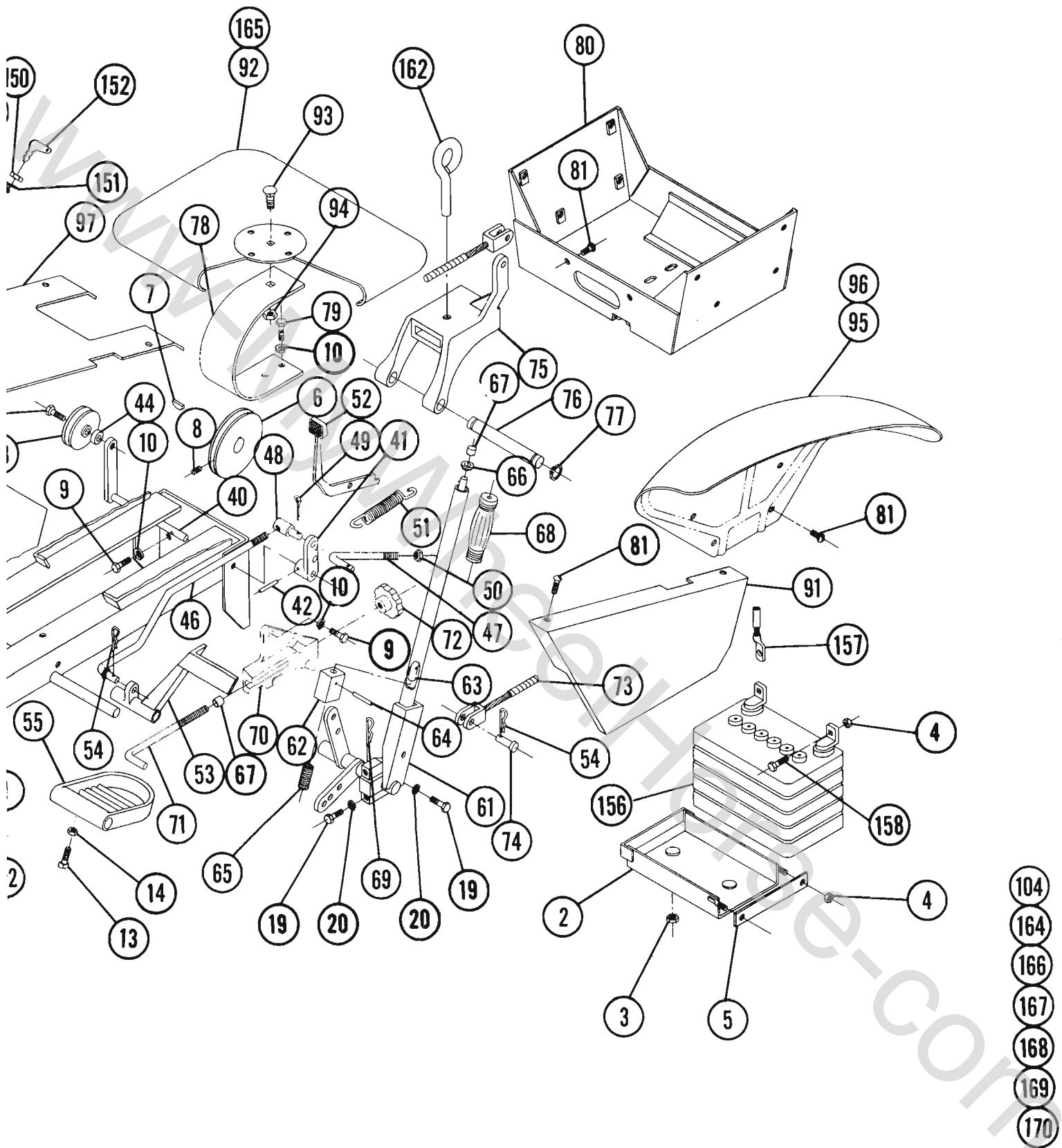
(Specifications subject to change without notice.)

| | |
|---|--|
| Length overall | 60 inches |
| Wheelbase | 41½ inches |
| Width at rear wheels | 30 inches |
| Width at front wheels | 31¼ inches |
| Height | 37 inches |
| Height to top of hood | 32 inches |
| Approx. weight: | |
| (604) | 345 lbs. |
| (654) | 440 lbs. |
| (704) | 395 lbs. |
| Crop clearance | 7¼ inches |
| Frame clearance | 13½ inches |
| Engine (4-cycle, single cylinder, air cooled) | 6 or 7 hp. |
| Fuel capacity | .4 quarts |
| Tires (front) | 4:00 x 8" pneumatic (16" wheel dia.) |
| Tires (rear) | Cleat-type or All Purpose tread 6:00 x 12" pneumatic (22" wheel dia.) |
| Speeds: | 3 forward to 6 mph.; 1 reverse to 2½ mph. |
| Turning radius (to outside of outside wheel) | 6¼' |

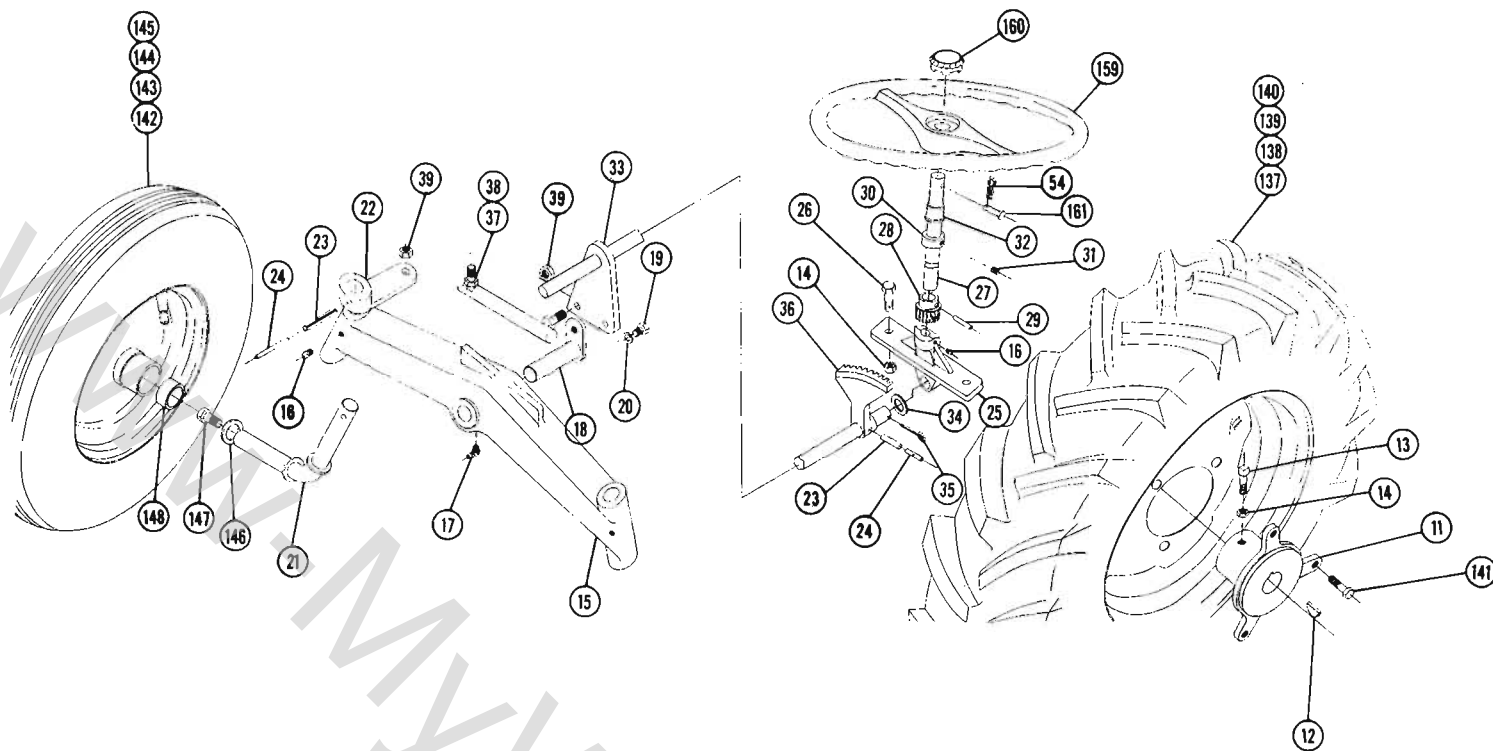
Wiring for 654







ame Ass'y.



Steering Ass'y. and Rear Wheel Ass'y.

PARTS LIST for MODELS 604, 654 and 704 LAWN and GARDEN TRACTORS

(Except Transmission — see last page for Transmission break down and Parts List.)

When ordering parts always list Part No. and name of part.

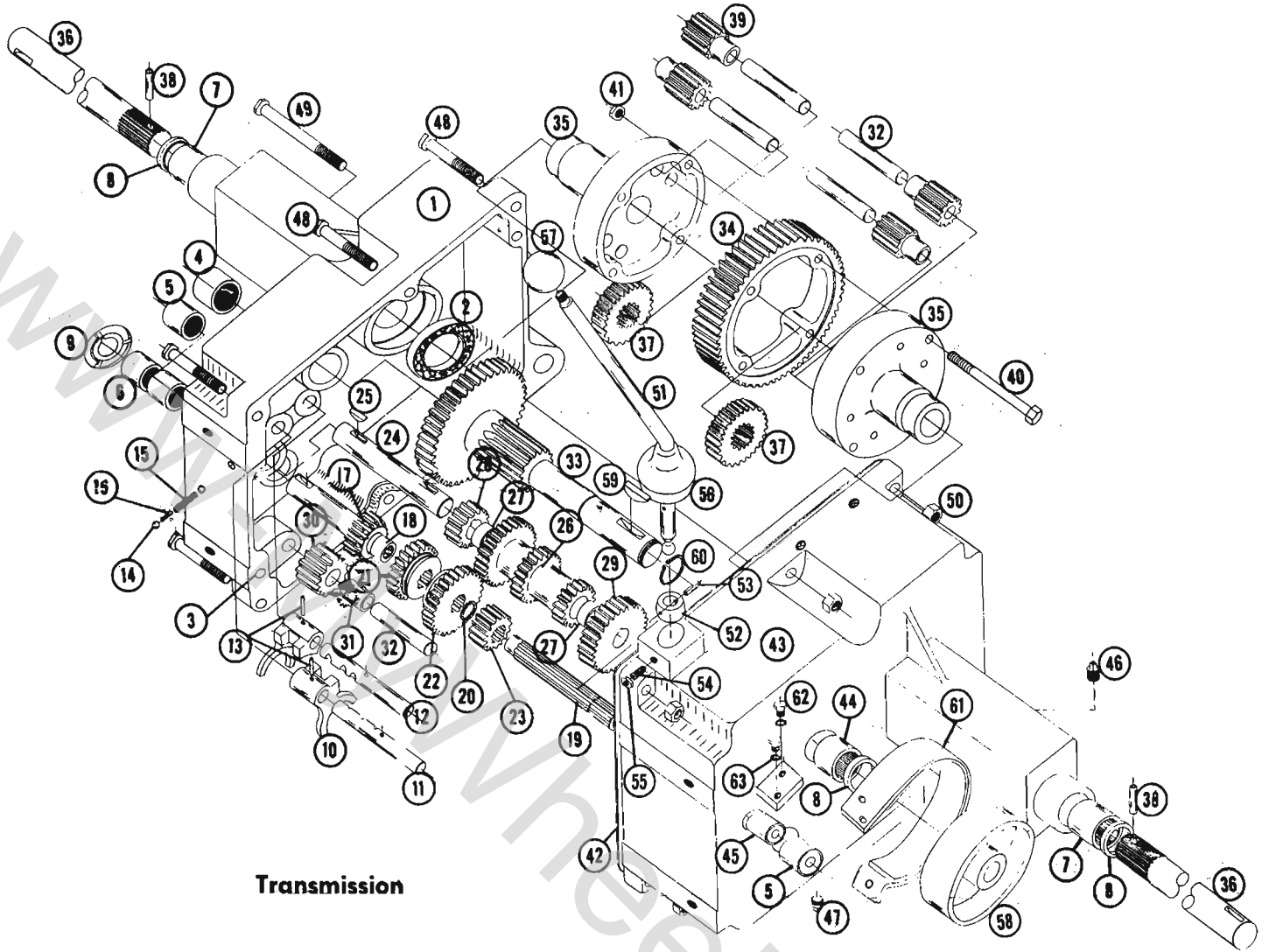
| Ref. No. | Part No. | Description | No. Req'd. | Ref. No. | Part No. | Description | No. Req'd. |
|----------|----------|---|------------|----------|----------|--|------------|
| 1 | 4945 | Ass'y. Frame | 1 | 26 | 908035-4 | Bolt — Hex $\frac{3}{8}$ -16 x $1\frac{1}{4}$ | 6 |
| 2 | 4953 | Ass'y. Battery Box | 1 | 27 | 4971 | Shaft — Steering Upper | 1 |
| 3 | 915112-6 | Nut — Nylock $\frac{5}{16}$ -18 | 2 | 28 | 3917 | Gear — Steering Pinion | 1 |
| 4 | 915111-6 | Nut Nylock $\frac{1}{4}$ -20 | 6 | 29 | 933215 | Roll — Pin $\frac{1}{4}$ x $1\frac{1}{4}$ | 1 |
| 5 | 4958 | Clamp — Battery | 1 | 30 | 1085 | Collar | 1 |
| 6 | 1611 | Pulley | 1 | 31 | 909848-6 | Set Screw $\frac{1}{4}$ -20 x $\frac{1}{4}$ Nylock | 2 |
| 7 | 937014 | Key #9 Woodruff | 1 | 32 | 1539 | Bushing — Nylon | 1 |
| 8 | 909849-6 | Set Screw $\frac{1}{4}$ -20 x $\frac{5}{16}$ Nylock | 1 | 33 | 4959 | Ass'y. Steering Shaft — Lower | 1 |
| 9 | 908032-4 | Bolt — Hex $\frac{3}{8}$ -16 x $\frac{3}{4}$ | 10 | 34 | 1278 | Washer — Shim | 2 |
| 10 | 920083-4 | Lockwasher $\frac{3}{8}$ Dia. | 9 | 35 | 932034-4 | Cotter Pin $\frac{3}{16}$ Dia. x 1 | 1 |
| 11 | 3574 | Hub — Wheel | 2 | 36 | 4413 | Sector — Steering | 1 |
| 12 | 937022 | Key #15 Woodruff | 2 | 37 | 1772 | Ass'y. Ball Joint R.H. | 1 |
| 13 | 909554-4 | Set Screw Sq. Hd. $\frac{3}{8}$ -16 x 1 | 4 | 38 | 1773 | Ass'y. Ball Joint L.H. | 1 |
| 14 | 915113-6 | Nut Nylock $\frac{3}{8}$ -16 | 10 | 39 | 915002-6 | Nut — Nylock $\frac{3}{8}$ -24 | 4 |
| 15 | 1649 | Axle — Front | 1 | 40 | 3950 | Ass'y. Idler Arm & Shaft | 1 |
| 16 | 1030 | Fitting — Grease | 5 | 41 | 4899 | Arm — Clutch Rod Pivat | 1 |
| 17 | 1481 | Fitting — Grease 45° | 1 | 42 | 933158 | Roll Pin $\frac{1}{8}$ x $1\frac{1}{4}$ | 1 |
| 18 | 2294 | Ass'y. Pin & Plate | 1 | 43 | 1623 | Pulley — Idler | 1 |
| 19 | 908015-4 | Bolt — Hex $\frac{5}{16}$ -18 x $\frac{1}{2}$ | 4 | 44 | 1536 | Bushing | 1 |
| 20 | 920082-4 | Lockwasher $\frac{5}{16}$ Dia. | 8 | 45 | 1363 | Bolt — Hex $\frac{3}{8}$ -16 x $\frac{7}{8}$ Special | 1 |
| 21 | 1898 | Ass'y. Spindle | 2 | 46 | 2593 | Rod — Clutch | 1 |
| 22 | 1899 | Arm — Steering | 2 | 47 | 3935 | Rod — Brake | 1 |
| 23 | 933216 | Roll — Pin $\frac{1}{4}$ x $1\frac{3}{8}$ | 3 | 48 | 5162 | Stud — Clutch Rod | 1 |
| 24 | 933174 | Roll — Pin $\frac{5}{32}$ x $1\frac{3}{8}$ | 3 | 49 | 932017-4 | Cotter Pin $\frac{1}{8}$ x 1 | 5 |
| 25 | 4412 | Support — Steering | 1 | 50 | 915605-4 | Nut $\frac{3}{8}$ -16 Elastic Stop | 1 |

PARTS LIST for MODELS 604, 654 and 704 LAWN and GARDEN TRACTORS

(Except Transmission — see last page for Transmission break down and Parts List.)

When ordering parts always list Part No. and name of part.

| Ref. No. | Part No. | Description | No. Req'd. | Ref. No. | Part No. | Description | No. Req'd. |
|----------|----------|---|------------|----------|----------|-----------------------------------|------------|
| 51 | 1129 | Spring — Clutch | 1 | 111 | 4216 | Elbow — ¼ Pipe x 90° (604-654) | 1 |
| 52 | 4417 | Ass'y. Lever & Knob — Brake | 1 | 112 | 4217 | Cap ¼ Pipe (604-654) | 1 |
| 53 | 2267 | Pedal — Clutch | 1 | 113 | 5222 | Elbow — 90° Special (704) | 1 |
| 54 | S-52-3 | Hairpin — Cotter | 4 | 114 | 5223 | Nipple ⅜ Pipe x 4 — Special (704) | 1 |
| 55 | 4421 | Footrest | 2 | 115 | 5224 | Cap — ⅜ Pipe (704) | 1 |
| 56 | 4246 | Ass'y. Trip Lever (654-704) | 1 | 116 | 1621 | Pulley — Engine | 1 |
| 57 | 4239 | Pedal — Attach. Clutch (654-704) | 1 | 117 | 1349 | Key ¼ x ¼ x 1½ | 1 |
| 58 | 1014 | Spring (654-704) | 1 | 118 | 1744 | Muffler (704) | 1 |
| 59 | 3933 | Link (654-704) | 1 | 119 | 3947 | Nipple 1" Close Pipe (704) | 1 |
| 60 | 933188 | Roll Pin ⅜ x 1 (654-704) | 1 | 120 | 3939 | Elbow 1" x 45° (704) | 1 |
| 61 | 2266 | Ass'y. Lift Lever | 1 | 121 | 943366-4 | Nipple 1" Pipe x 2" (704) | 1 |
| 62 | 4438 | Plunger | 1 | 122 | 2676 | Ass'y. Fuel Tank | 1 |
| 63 | 4439 | Rod | 1 | 123 | 5186 | Cap — Fuel Tank | 1 |
| 64 | 933168 | Roll Pin ⅜ ₃₂ x 1⅜ ₁₆ | 1 | 124 | 4941 | Valve — Fuel Shut Off & Filter | 1 |
| 65 | 3624 | Spring | 1 | 125 | 908019-4 | Bolt — Hex ⅝-18 x 1 | 1 |
| 66 | 3578 | Guide — Rod | 1 | 126 | 4897 | Speed Nut ⅜-18 | 1 |
| 67 | 3680 | Cap | 2 | 127 | 950141-4 | Clamp ⅜ Dia. Corbin (704) | 1 |
| 68 | 1000 | Grip — Handle | 1 | 128 | 1796 | Fuel Line (704) | 1 |
| 69 | S-52-6 | Hairpin — Cotter | 1 | 129 | 5171 | Ass'y. Control — Throttle | 1 |
| 70 | 2274 | Quadrant | 1 | 130 | 5170 | Ass'y. Control — Choke | 1 |
| 71 | 2179 | Rod — Height Control | 1 | 131 | 1364 | Nut — Round ⅝-18 | 2 |
| 72 | 2196 | Knob — Height Control | 1 | 132 | 920127-4 | Lockwasher ⅝ Dia. (Ext. Tooth) | 2 |
| 73 | 3931 | Ass'y. Cable — Lift | 1 | 133 | 2879 | Clip (704) | 2 |
| 74 | 932120-4 | Clevis ¼ Dia. | 2 | 134 | 909000-4 | Bolt — Rd. Hd. #8-32 x ½ (704) | 2 |
| 75 | 3926 | Hitch | 1 | 135 | 915562-4 | Nut — Hex #8-32 (704) | 2 |
| 76 | 3988 | Pin — Hitch Shaft | 1 | 136 | 920078-4 | Lockwasher #8 (704) | 2 |
| 77 | S-50-75 | Snap Ring ¼ Shaft | 2 | 137 | 1667 | Ass'y. Wheel Tire & Tube — Rear | 2 |
| 78 | 3537 | Spring — Seat | 1 | 138 | 1700 | Wheel | 2 |
| 79 | 908034-4 | Bolt — Hex ⅜-16 x 1 | 2 | 139 | 1662 | Tire | 2 |
| 80 | 4892 | Ass'y. Tool Box | 1 | 140 | 1654 | Tube | 2 |
| 81 | 1385 | Screw — Sems ¼-20 x ½ | 18 | 141 | 1004 | Lug — Bolt | 6 |
| 82 | 4993 | Ass'y. Belt Guard (704) | 1 | 142 | 1709 | Ass'y. Wheel, Tire & Tube — Front | 2 |
| 83 | 4975 | Ass'y. Hood — Complete | 1 | 143 | 1712 | Wheel — With Two 1521 Bearings | 2 |
| 84 | 1345 | Thumb — Screw ¼-20 x ⅜ | 2 | 144 | 1656 | Tire | 2 |
| 85 | 1346 | Thumb — Screw ¼-20 x ¾ | 1 | 145 | 1657 | Tube | 2 |
| 86 | 920081-4 | Lockwasher ¼ Dia. | 3 | 146 | 2844 | Washer | 2 |
| 87 | 2767 | Grommet 2½ I.D. | 1 | 147 | 908033-6 | Bolt Nylock ⅜-16 x ⅜ | 2 |
| 88 | 4962 | Ass'y. Belt Guard (604-654) | 1 | 148 | 2816 | Hubcap | 2 |
| 89 | 1432 | Screw — Rd. Hd. ⅝-24 x ½ | 3 | 149 | 4987 | Ass'y. Switch — Ignition (654) | 1 |
| 90 | 909082-4 | Screw Rd. Hd. ⅝-16 x ½ | 1 | 150 | 4882 | Nut — Hex ⅝-32 — Special (654) | 1 |
| 91 | 4419 | Shield | 1 | 151 | 4881 | Lockwasher ⅝ Dia. — Special (654) | 1 |
| 92 | 3973 | Seat | 1 | 152 | 3668 | Key — Ignition (654) | 1 |
| 93 | 900113-4 | Bolt — Carriage ½-13 x 1¼ | 1 | 153 | 3279 | Ass'y. Switch (604-704) | 1 |
| 94 | 915115-6 | Nut — Nylock ½-13 | 1 | 154 | 4856 | Plug Button — .500 Hole (654) | 1 |
| 95 | 4972 | Fender R.H. | 1 | 155 | 3757 | Plug Button — .625 Hole (604-704) | 1 |
| 96 | 4973 | Fender L.H. | 1 | 156 | 3653 | Battery | 1 |
| 97 | 4895 | Ass'y. Cover | 1 | 157 | 4979 | Wiring Harness | 1 |
| 98 | 4980 | Ass'y. Engine — 6 H.P. (604) | 1 | 158 | 908002-4 | Bolt — Hex ¼-20 x ⅝ (654) | 2 |
| 99 | 4981 | Ass'y. Engine — 6 H.P. (654) | 1 | 159 | 4983 | Steering Wheel | 1 |
| 100 | 5150 | Ass'y. Engine — 7 H.P. (704) | 1 | 160 | 2897 | Insert | 1 |
| 101 | 4416 | Base — Engine (604-654) | 1 | 161 | 932948-4 | Pin — Clevis | 1 |
| 102 | 1739 | Muffler (604-654) | 1 | 162 | 1813 | Tool Pin | 1 |
| 103 | 1754 | Nipple ¼ Pipe x 5½ (604-654) | 1 | 163 | 1576 | "V" Belt | 1 |
| 104 | 4985 | Decal — Instrument Panel | 1 | 164 | S-56-6 | Wrench Allen ⅛ Hex | 1 |
| 105 | 1755 | Elbow ¼ Pipe x 90° Street El (604-654) | 1 | 165 | 3978 | Cushion (654-704) | 1 |
| 106 | 1756 | Nut Lock ¼ Pipe (604-654) | 1 | 166 | 5147 | Decal (704) | 1 |
| 107 | 2297 | Brace — Exhaust (604-654) | 1 | 167 | 4969 | Decal (654) | 1 |
| 108 | 1240 | "U" Bolt (604-654) | 1 | 168 | 4970 | Decal (604) | 1 |
| 109 | 4943 | Nipple — ¼ Pipe x 4 (604-654) | 1 | 169 | 4410 | Decal — Wheel Horse Emblem | 2 |
| 110 | 4218 | Nipple — ¼ Pipe x 1¼ (604-654) | 1 | 170 | 4984 | Decal — Hood Panel | 1 |



Transmission

TRANSMISSION PARTS LIST

When ordering parts always list Part No. and name of part.

| Ref. No. | Part No. | Description | No. Req'd. | Ref. No. | Part No. | Description | No. Req'd. |
|----------|----------|--------------------------------------|------------|----------|----------|---|------------|
| 1 | 3900 | Case - Transmission | 1 | 33 | 3903 | Gear - Brake Shaft | 1 |
| 2 | 1533 | Bearing - Ball | 1 | 34 | 3906 | Gear - Bull | 1 |
| 3 | 3915 | Pin - Locating | 2 | 35 | 3905 | Case - Differential | 2 |
| 4 | 1532 | Bearing - Needle | 1 | 36 | 3904 | Axle - Rear | 2 |
| 5 | 1529 | Bearing - Needle | 2 | 37 | 3908 | Gear - Axle | 2 |
| 6 | 1508 | Bearing - Needle | 2 | 38 | 933217 | Pin - Roll $\frac{1}{8}$ x $1\frac{1}{2}$ | 2 |
| 7 | 1528 | Bearing - Needle | 2 | 39 | 4235 | Gear - Differential Pinion | 4 |
| 8 | 1232 | Seal - Oil | 3 | 40 | 1329 | Cap Screw - Hex $\frac{3}{16}$ - 18 x $3\frac{1}{4}$ | 4 |
| 9 | 1303 | Seal - Oil | 1 | 41 | 1316 | Nut - Hex - Lock $\frac{3}{16}$ - 18 | 4 |
| 10 | 3503 | Fork - Shift | 2 | 42 | 3912 | Gasket | 1 |
| 11 | 3515 | Rail - Front Shift | 1 | 43 | 3901 | Case Transmission | 1 |
| 12 | 3516 | Rail - Rear Shift | 1 | 44 | 1530 | Bearing - Needle | 1 |
| 13 | 933156 | Pin - Roll $\frac{1}{8}$ x 1 | 2 | 45 | 1531 | Bearing - Needle | 1 |
| 14 | 3517 | Ball - Stop | 2 | 46 | 943460-4 | $\frac{1}{4}$ Std. Pipe Plug | 1 |
| 15 | 3518 | Spring - Stop | 1 | 47 | 943420-4 | $\frac{3}{8}$ Std. Pipe Plug | 1 |
| 16 | 3573 | Shift Pin - Stop | 1 | 48 | 908038-4 | Bolt - Hex - $\frac{3}{8}$ - 16 x 2 | 5 |
| 17 | 3522 | Gear - Input Drive | 1 | 49 | 908043-4 | Bolt - Hex - $\frac{3}{8}$ - 16 x $3\frac{1}{2}$ | 1 |
| 18 | 1518 | Bearing - Needle | 1 | 50 | 915113-6 | Nut - Nylock $\frac{3}{8}$ - 16 | 6 |
| 19 | 3907 | Shaft - Spline | 1 | 51 | 4898 | Stick - Shift | 1 |
| 20 | S-50-75 | Snap Ring Truarc $\frac{3}{4}$ Shaft | 1 | 52 | 3514 | Collar - Shift | 1 |
| 21 | 3523 | Gear (Hi & Inter.) | 1 | 53 | 933168 | Pin - Roll $\frac{1}{32}$ x $1\frac{13}{16}$ | 1 |
| 22 | 3524 | Gear (Low & Reverse) | 1 | 54 | 909854-4 | Screw - Soc. Hd. - Set $\frac{1}{4}$ - 20 x $\frac{3}{4}$ | 1 |
| 23 | 3526 | Gear - Spline Shaft | 1 | 55 | 915111-4 | Nut - Hex Lock $\frac{1}{4}$ - 20 | 1 |
| 24 | 3910 | Cluster - Shaft | 1 | 56 | 3577 | Boot - Shift Lever | 1 |
| 25 | 937014 | Key - #9 Woodruff | 2 | 57 | 1001 | Knob - Shift | 1 |
| 26 | 3525 | Gear - Cluster | 1 | 58 | 3902 | Drum - Brake | 1 |
| 27 | 1504 | Bushing - Bronze | 2 | 59 | 937022 | Key #15 Woodruff | 1 |
| 28 | 3528 | Pinion - Cluster Shaft Reduction | 1 | 60 | S-50-100 | Snap Ring 1" Shaft | 1 |
| 29 | 3527 | Gear - Cluster Shaft Reduction | 1 | 61 | 4437 | Band - Brake | 1 |
| 30 | 4204 | Gear - Reverse Idler | 1 | 62 | 908002-4 | Bolt - Hex $\frac{1}{4}$ - 20 x $\frac{3}{8}$ | 2 |
| 31 | 1516 | Bushing - Bronze | 1 | 63 | 920081-4 | Washer - Lock $\frac{1}{4}$ | 2 |
| 32 | 3909 | Pin - Reverse Idler | 5 | | | | |