

Wheel Horse®

LAWN

Ranger

models

33R, 33E

Riding Rotary Mower



OPERATION AND SERVICE MANUAL WITH PARTS LIST



WHEEL-HORSE PRODUCTS, INC.

SOUTH BEND, IND.

ASSEMBLY

- A. Remove all parts from box and place in a convenient arrangement on a clean, level surface.
- B. Insert a Woodruff key, Part No. 1008, in the keyway in each rear axle. Assemble rear wheels on axles with nut for set screw to the inside making sure that the wheel hub does not touch the end of the axle housing. The wheels are held in place with set screws which must be tightened securely and locked with the jam nuts provided.
- C. Slide the front wheels onto the front spindles and secure with washers, Part No. 1278, and snap rings, Part No. 1127.
- D. Place steering wheel on steering column shaft and secure with the $\frac{3}{8}$ x $\frac{1}{2}$ roll pin, Part No. 1227.
- E. Remove screws, holding seatspring in place, and reinstall with hitch bar in place on top of seat spring.
- F. Attach fenders to tool box using holes that give proper location of fender with respect to wheels.
- G. Secure seat to top of seat spring with carriage bolt provided. The seat may be attached to either of the two holes in the seat spring depending on operator preference.
- H. Screw $\frac{5}{8}$ " long pipe nipple into elbow in exhaust port in engine and screw muffler onto nipple. Tighten securely.
- I. Attach the two 6" wheels to the mower housing using shoulder bolt, Part No. 4177. Wheels can be moved up or down to obtain cutting heights of $\frac{1}{2}$ " to $2\frac{1}{2}$ ". In the up position mower cuts a full $\frac{3}{8}$ " high.
- J. Assemble idler pulley, Part No. 1623, and shield assembly, Part No. 4931, to mower clutch pedal. The leaf spring on the shield assembly must be deflected down so that it fits under the tubular portion of the clutch pedal assembly. The idler bushing Part No. 1536 must be placed between the idler and shield. Note! The belt must be in the idler pulley groove before these parts are assembled.
- K. Slide mower under unit and attach the four links using the fourth and sixth holes from the front on each side of the frame. Use $\frac{3}{8}$ x 1 bolts, Part No. 1425, spacers, Part No. 4927, washers, Part No. 1434, and nuts, Part No. 1408, for attaching links to frame.
- L. Move lift lever forward and hook lift link to pin in lift arm, securing with washer and hair pin cotter.
- M. With mower clutch in disengaged, down position, slide belt over engine pulley and place in outside groove. Release mower clutch and check belt alignment. Tightness of belt is automatically adjusted through the tension springs.
- N. Adjust position of belt stop Part No. 4930, so that it just clears the outside of the belt when the mower is at maximum and minimum height and with the belt clutch engaged. This insures proper release of mower clutch.

(NOTE: Auxiliary foot rest CAN NOT be used when mowing)

WARRANTY

WE WARRANT WHEEL HORSE PRODUCTS FOR ONE YEAR from date of purchase against defective parts and workmanship. We will replace, free of charge, any defective part if returned to the factory PREPAID*. Wheel Horse Products, Inc., reserves the right to make changes or improvements upon its products without imposing any obligations upon itself to install the same upon its products that have been previously manufactured.

The engine and battery carry a separate warranty by the manufacturer. FOR ENGINE OR BATTERY SERVICE, CONTACT YOUR LOCAL ENGINE OR BATTERY SERVICE HEADQUARTERS.

*ALL WARRANTY CLAIMS, WORK, SHIPMENTS, MUST BE HANDLED THROUGH YOUR AUTHORIZED WHEEL HORSE DEALER.

NOTE: 90 Day Warranty for Commercial Use.

BEFORE YOU START

There is **NO OIL** in the crankcase of the engine when shipped from the factory. Read Engine Manual and follow all instructions pertaining to type of lubrication specified. The engine is the heart of your Lawn Ranger and it is very important that you keep it in good condition.

Before mowing, the mower should be operated at a slow speed to check all moving parts for any damage or looseness caused in transporting.

Lubricate all grease fittings with a regular pressure gun lubricant every eight to ten hours of operation. Refer to Figure 1 for the location of grease fittings.

A light machine oil should be used on all moving parts to keep joints from wearing and squeaking.

Remove oil filler plug, located at the left rear side of the transmission, and fill to level of hole with a good grade of S.A.E. 90 Gear Lube (will require about 3 pints).

The transmission should be checked after every 40 hours of use. The transmission should be drained once a year by removing plug on bottom to drain oil. Refill as above paragraph. This is a regular automotive type transmission with sliding gears and should have the same care as your car.

BATTERY

The battery installed in the Model 33E is a dry charged battery. It is important that you properly prepare this battery to insure good service and long life.

1. Remove vent caps. Remove or destroy any sealing device which may have been used to close or restrict the vent openings.
2. Fill each cell of the battery to the proper level with the battery electrolyte.

NOTE: Temperature of battery and electrolyte at time of filling should be above 60°F. Never fill battery in the vehicle.

3. **BOOST CHARGE:** 15 amps, for 10 minutes or 7 amps, for 30 minutes. Adjust electrolyte level, if necessary, after charge.

4. **Install battery with battery posts toward the rear of mower.** Start motor. Check to see if generator is charging properly. After battery has been in service, add only approved water.

DO NOT ADD ACID.

TIRES

The front tires are 3.50 x 4 pneumatic and should be filled to 20 pounds of air pressure. The rear tires are 4.00 x 8 and should have 6 to 8 pounds of air pressure.

STARTING ENGINE

1. Before starting the engine open valve on sediment bowl.
2. Place gear shift lever in neutral position, lower the rotary mower to the ground on its gage wheels, make certain that the mower clutch is latched in the disengaged position.
3. Pull throttle lever $\frac{1}{2}$ way out and turn to the right to lock it in position. Note: The Throttle control has a locking device. Turn the throttle control to the left to unlock, adjust to the desired position and turn to the right to lock.
4. Pull choke lever all the way out to choke engine. If engine is warm and has been running, choking will not be necessary.
5. A. Model 33R has a recoil starter with an OFF and ON switch. To start push switch to ON position and pull recoil starter. (NOTE: Keep foot clear of mower while pulling recoil starter.)
B. Model 33E has an OFF and ON key, also a starter button. Turn key to ON position and push starter button.
6. When engine starts push choke in to off position and regulate throttle control by turning to the left to unlock and push in or out to desired speed.
7. Depress clutch pedal on left side of the Lawn Ranger before selecting desired gear range.
8. When starting the Lawn Ranger in winter it is desirable to depress clutch so starter does not have to turn transmission.

CLUTCHING

There is no need to force the gear shift lever if the gears do not immediately mesh. Depress clutch pedal all the way down and let up, then depress again and shift. To avoid sudden starts, release clutch pedal slowly. While in motion do not shift gears without depressing clutch pedal.

The clutch pedal also operates the brakes WHEN DEPRESSED ALL THE WAY DOWN. For this reason, you should depress the clutch pedal ONLY $\frac{1}{2}$ OF THE WAY DOWN WHEN SHIFTING while in motion. This clutch-brake pedal combination makes clutching automatic as you apply the brakes to stop.

PARKING BRAKE

The parking brake is located on the left side of the Lawn Ranger as shown in Figure 1. To set the parking brake depress the clutch-brake pedal as far as possible and push the parking brake forward. To release the brake depress the clutch-brake pedal and pull the parking brake back.

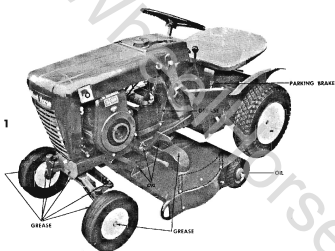
CARE OF THE LAWN RANGER

1. Keep the Lawn Ranger greased and oiled regularly. Refer to Figure 1 for the location of grease fittings. Check transmission and engine case oil levels.
2. Keep engine air cleaner clean. This will add to engine life.
3. Keep tires properly inflated. See previous instructions.
4. Keep the Lawn Ranger covered and in a dry place when not in use.
5. Keep grass and dirt out of engine cowling as these will stop the flow of air and decrease engine life.
6. **BRAKE ADJUSTMENT.** The brake band, located on the left side of the transmission, brakes the transmission and in turn stops the wheels. Adjust the nut on the brake rod so that, when you depress the clutch pedal all the way down, the band tightens around the brake drum, just as the idler pulley releases the belt. Keep brake band and drum free from oil and dirt.
7. **Clutch-Brake Pedal Adjustment.** The clutch-brake pedal rod may be turned in or out to adjust the pedal to operator's desired position. Remove pin from rod and turn rod in or out for adjustment.
8. When blades become dull, remove and regrind. **CAUTION:** Sharpen evenly on both sides so blade does not become out of balance.
9. On the Model 33E check battery after every 40 hours of use. If the mower has been in storage it may be necessary to recharge.
10. Your Lawn Ranger is only as good as the service you give it. See your Wheel Horse Dealer for a thorough check-up after each season of use.
11. When replacing belts be sure to purchase them from your Wheel Horse Dealer, as these belts are specifically designed for each application. **(NOTE: Make sure all pulleys are in line.)**

5. While mowing, give undivided attention to the job at hand, keep the cutting path in area of operation clear of all persons, particularly small children.
6. Never leave motor running unattended. Remove key when not in use — children could get hurt.
7. Don't overspeed the engine. Excessive cutting speed or tampering with the governor can be dangerous.
8. The mower has side plates which may be removed when cutting heavy grass or weeds. The sideplates may be reinstalled in an inverted position, as shown by the dotted illustration, thus acting as an additional foot guard. **EXTREME CAUTION** should be exercised when the sideplates are removed, because of the danger of flying debris.
9. Exercise special care when mowing around objects to prevent the blades from striking them, and never deliberately mow over any object.
10. Stop operation when another person approaches — prohibit others from riding with you on your riding mower.
11. Riding mowers can be tipped to either back or side. Exercise extreme caution when mowing on slopes or inclines. Engage clutch slowly and smoothly. Never abuse your mower by improper handling.
12. Never adjust mower or tractor until engine has been turned off.
13. If your Lawn Ranger is to be used for purposes other than mowing, latch mower clutch in disengaged position, stop engine and remove mower drive belt from engine pulley. The spring wire belt stop may be deflected to remove belt. Never allow children to operate unless you have removed this belt to prevent their accidentally engaging mower.

(NOTE: Auxiliary Foot Rest for use only when mower is removed. This foot rest CAN NOT be used when mowing.)

Figure 1



OPERATION

With proper care and adjustment, your new Wheel Horse Lawn Ranger has been designed to give many years of satisfactory performance.

Preparation for operation and operating hints listed below are recommended for all mowers and approved by the Outdoor Power Institute for safe operation of your mower.

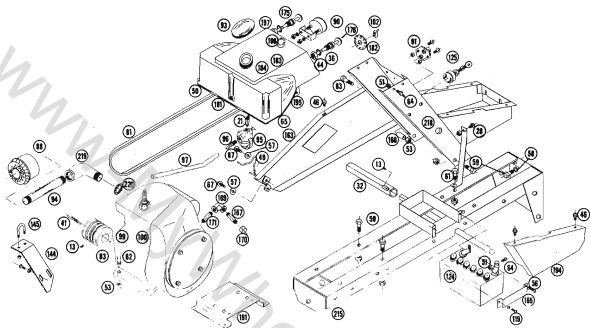
1. Before starting operation, clear the entire lawn area of all debris that could catch on to or be thrown by the blades.
2. When you mow on rough terrain or in high grass or weeds, the blade should be set at the highest cutting point. In tall grass or weeds, a second cutting may be made to bring the grass down to the desired height.
3. Mowers do not operate as well in wet grass. Wet grass has a tendency to build up on mower housing and give non-uniform discharge.
4. Fill gas tank outdoors. Avoid spilling gasoline and don't fill the tank while engine is running or while you are smoking.

WHEEL HORSE LAWN RANGER SPECIFICATIONS

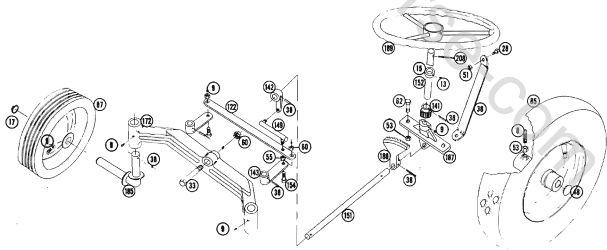
(SPECIFICATIONS SUBJECT TO CHANGE WITHOUT NOTICE)

Length Overall	54 inches
Wheelbase	41 $\frac{1}{2}$ inches
Width Overall (with mower)	33 $\frac{1}{2}$ inches
Width Overall (without mower)	28 $\frac{1}{2}$ inches
Width at Front Wheels	24 $\frac{1}{2}$ inches
Height	33 $\frac{1}{2}$ inches
Height to Top of Hood	28 $\frac{1}{2}$ inches
Net Weight (33E)	365 lbs.
Net Weight (33R)	339 lbs.
Frame Clearance	10 $\frac{1}{4}$ inches
Engine (4 cycle, single cylinder, air cooled)	6 H.P.
Fuel Capacity	4 quarts
Tires (front)	3.50 x 4 Pneumatic (10" wheel dia.)
Tires (rear)	4.00 x 8 Pneumatic (16" wheel dia.)

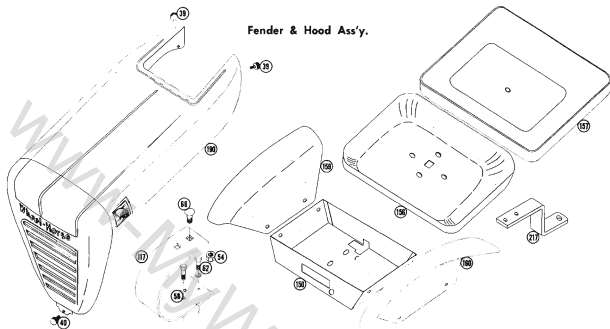
Main Frame Ass'y.



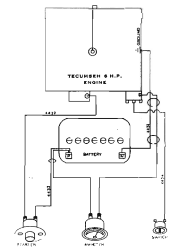
Steering & Wheel Ass'y.



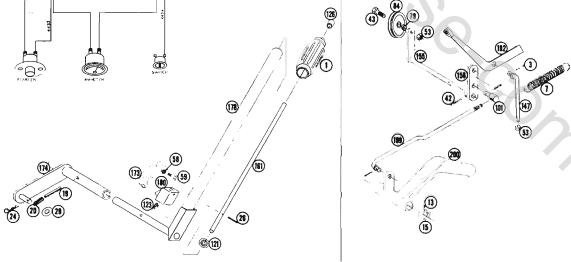
Fender & Hood Ass'y.

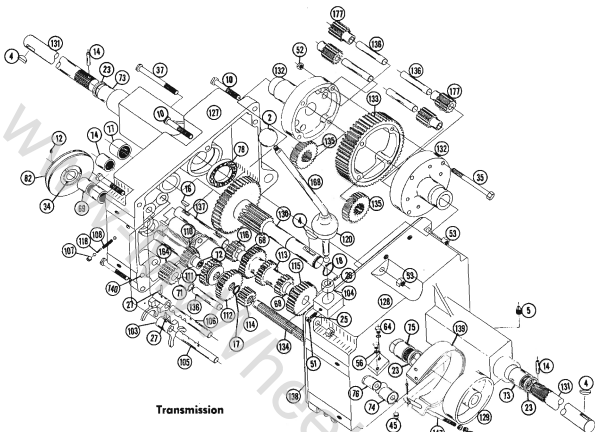


Wiring for 33E



Lift & Brake Ass'y.





Transmission

PARTS LIST for MODELS 33R and 33E RIDING ROTARY MOWER

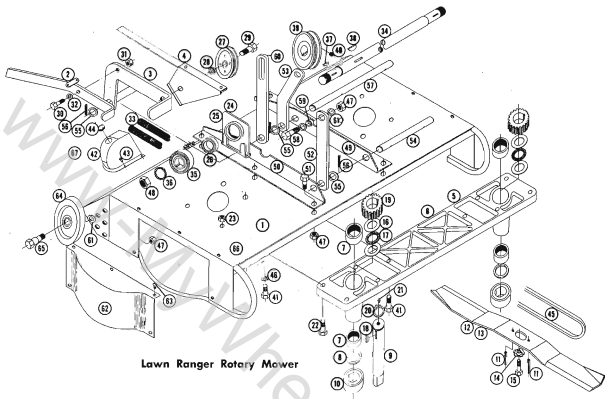
When ordering parts always list Part No. and name of part.

Ref. No.	Part No.	Name	Quantity	Ref. No.	Part No.	Name	Quantity
1	1000	Handle Grip	1	33	1329	$\frac{1}{8}$ 18 x $3\frac{1}{2}$ Hex Hd. Cop Screw	4
2	1001	Knob	1	36	1331	$\frac{1}{8}$ Shakeproof Washer	1
3	1002	$\frac{3}{8}$ x 1 Cotter Key	5	37	1339	$\frac{1}{4}$ 16 x $3\frac{1}{2}$ Hex Hd. Cop Screw	1
4	1008	No. 15 Woodruff Key	3	38	1340	$\frac{1}{4}$ x $1\frac{1}{2}$ Roll Pin	2
5	1013	$\frac{1}{4}$ Std. Pipe Plug	1	39	1345	$\frac{1}{4}$ 20 x $\frac{3}{4}$ Thumb Screw	2
7	1014	Tension Spring	2	40	1346	$\frac{1}{4}$ 20 x $1\frac{1}{4}$ Thumb Screw	1
8	1023	Square Head Set Screw	1	41	1349	$\frac{1}{4}$ x $\frac{3}{4}$ x $1\frac{1}{2}$ Key	1
9	1030	Grease Fitting	6	42	1350	$\frac{3}{8}$ x $1\frac{1}{4}$ Roll Pin	1
10	1032	$\frac{3}{8}$ 16 x 2 Hex Hd. Cap Screw	5	43	1363	$\frac{1}{4}$ 16 x $\frac{3}{8}$ Hex Hd. Cap Screw	1
12	1042	$\frac{1}{4}$ 18 x $\frac{1}{4}$ Socket Hd. Set Screw	1	44	1364	$\frac{1}{2}$ Round Nut	1
13	1046	$\frac{1}{4}$ 20 x $\frac{1}{4}$ Socket Hd. Set Screw	1	45	1364	Std. Pipe Plug	2
14	1081	$\frac{1}{4}$ x $1\frac{1}{2}$ Roll Pin	3	46	1385	$\frac{1}{4}$ 20 x $\frac{1}{2}$ Capscrew	4
15	1085	$\frac{3}{8}$ I.D. Shaft Collar	2	47	1483	Decol	1
16	1122	No. 9 Woodruff Key	3	48	4944	Plug-Wheel	2
17	1127	$\frac{3}{4}$ I.D. Snap Ring	1	49	4930	Belt Stop	1
18	1128	1 I.D. Snap Ring	1	50	4452	Gasket-Tank	1
19	1136	$\frac{1}{4}$ 20 x $\frac{1}{4}$ Roll Pin	1	51	1406	$\frac{1}{2}$ 20 Hex Nylock Nut	1
20	1135	$\frac{3}{8}$ x $1\frac{1}{2}$ Roll Pin	1	52	1316	$\frac{1}{8}$ 18 Hex Lock Nut	4
21	1192	$\frac{1}{8}$ Pipe Nip	1	53	1408	$\frac{3}{8}$ 16 Hex Nylock Nut	21
22	1206	$\frac{3}{8}$ 16 x $1\frac{1}{2}$ Sq. Hd. Cup Paint Set Screw	2	54	1410	$\frac{1}{2}$ 13 Hex Nylock Nut	1
23	1232	Oil Seal	3	55	1413	$\frac{3}{8}$ 24 Hex Nylock Nut	1
24	1372	Hair Pin Cotter	1	56	1416	$\frac{1}{2}$ Split Lock Washer	4
25	1379	$\frac{1}{4}$ 20 x $\frac{3}{4}$ Drag Paint Set Screw	1	57	1417	$\frac{1}{2}$ Split Lock Washer	2
26	1242	$\frac{3}{8}$ x $\frac{1}{2}$ Roll Pin	1	58	1418	$\frac{1}{2}$ Split Lock Washer	4
27	1244	$\frac{1}{4}$ x 1 Roll Pin	2	60	1423	$\frac{3}{8}$ 16 x $\frac{3}{8}$ Hex Hd. Cap Screw	8
28	1262	$\frac{1}{2}$ 20 x $\frac{3}{8}$ Rd. Hd. Mach. Screw	4	61	1424	$\frac{1}{2}$ 13 Hex Jam Nut	3
29	1434	$\frac{3}{8}$ SAE Washer	1	62	1425	$\frac{3}{8}$ 16 x 1 Hex Hd. Cap Screw	2
30	1273	10-32 x $\frac{3}{8}$ Mach. Screw	2	63	1426	$\frac{3}{8}$ 16 x $1\frac{1}{2}$ x Hex Hd. Cap Screw	6
31	1277	Wire Clip	2	64	1427	$\frac{3}{8}$ 16 x 2 Hex Hd. Cap Screw	1
32	4912	Tube & Nut Assy.	1	65	1428	$\frac{1}{4}$ 20 x $\frac{1}{2}$ Hex Hd. Cap Screw	6
33	1287	$\frac{1}{2}$ 13 x $2\frac{1}{2}$ Hex Hd. Cop Screw	1	66	1480	$\frac{1}{2}$ x $\frac{3}{4}$ Tapping Screw	15
34	1303	Oil Seal	2	64	1430	$\frac{1}{2}$ 13 x $1\frac{1}{2}$ Carriage Hd. Bolt	1
				67	1432	$\frac{3}{8}$ 24 x $\frac{1}{2}$ Rd. Hd. Mach. Screw	2

PARTS LIST for MODELS 33R and 33E RIDING ROTARY MOWER

When ordering parts always list Part No. and name of part.

Ref. No.	Part No.	Name	Quantity	Ref. No.	Part No.	Name	Quantity
68	1504	Bushing	2	141	3917	Bevel Pinion	1
69	1508	Needle Bearing	2	142	3918	Steering Pivot	1
71	1516	Bushing	1	143	3919	Steering Arm	2
72	1518	Needle Bearing	1	144	2297	Brace — Exhaust	1
73	1528	Needle Bearing	2	145	1240	U-Bolt	1
74	1529	Needle Bearing	2	147	3935	Brake Rod	1
75	1530	Needle Bearing	1	149	3940	Drag Link	1
76	1531	Needle Bearing	1	150	3587	Tool Box	1
77	1532	Needle Bearing	1	151	3944	Lower Steering Shaft	1
78	1533	Ball Bearing	2	152	3945	Upper Steering Shaft	1
79	1536	Idler Bushing	1	154	3949	Clevis Pin	2
81	1576	"V" Belt 70" A Section	1	155	3950	Idler Arm	1
82	1611	Pulley	1	156	3973	Seat	1
83	1621	Engine Pulley	1	157	3978	Seat Cushion	1
84	1623	Idler Pulley	1	158	3979	Pivot Brake	1
85	1644	Rear Wheel Ass'y.	2	159	3586	Fender R.H.	1
87	3080	Front Wheel Ass'y.	2	160	3585	Fender L.H.	1
88	1739	Tecumseh Muffler	1	161	4910	Upper Plunger Rod	1
90	1745	Ammeter	1	163	4915	Belt Guard	1
91	1751	Starter Button	1	164	4204	Reverse Idler Gear	1
93	3998	Gas Cap	1	165	4206	Battery Clamp	1
94	1754	3/4" Std. Pipe Nipple 3 1/2" Lg.	1	166	4211	Spacer	1
95	1786	Fuel Strainer	1	167	4213	3/4 x 3 Std. Pipe Nipple	1
96	1787	Straight Fitting	1	168	4440	Shift Stick	1
97	1796	Fuel Line	1	169	4216	3/4 Std. Pipe Elbow 90°	1
99	2638	Tecumseh 6 hp. Engine (Electric)	1	170	4217	Pipe Cap 3/4 Std.	1
100	2639	Tecumseh 6 hp. Engine (Recoil)	1	171	4218	3/4 x 1 1/2 Std. Pipe Nipple	1
101	1861	Rod Central Stud	1	172	4220	Front Axle	1
102	3279	Off-On Switch (33R)	1	173	4222	Quadrant	1
103	3503	Shift Fork	2	174	4907	Lift	1
104	3514	Shift Collar	1	175	4232	Throttle	1
105	3515	Front Shift Rail	1	176	4233	Choke	1
106	3516	Rear Shift Rail	1	177	4235	Differential Pinion Gear	4
107	3517	Ball Stop	2	178	4905	Lift Lever	1
108	3518	Spring Stop	1	180	4438	Lower Plunger Ass'y.	1
110	3522	Input Gear	1	181	4407	Tank Bottom	1
111	3523	H1 and 2nd Gear	1	182	4249	Hole Plug	1
112	3524	Low and Reverse Gear	1	183	4406	Fuel Tank	1
113	3525	Cluster Gear	1	184	4405	Fuel Tank Ass'y.	1
114	3526	Splined Pinion	1	185	4901	Front Spindle	2
115	3527	Reduction Gear	1	186	4410	Wheel Horse Decal	2
116	3528	Reduction Pinion	1	187	4412	Bottom Steering Support	1
117	3537	Seat Spring	1	188	4413	Steering Sector	1
118	3573	Shift Pin Stop	1	189	4414	Steering Wheel	1
119	1143	1/4-20 x 3/8 Button Head Screw	2	190	4415	Hood	1
120	3577	Seat	1	191	4416	Lawson Engine Base	1
121	3578	Plunger Guide	1	192	4417	Brake Set Lever	1
122	3605	Tie Rod	1	193	4418	Shift Decal	1
123	3624	Compression Spring	1	194	4419	Shield	1
124	3653	Battery	1	195	1466	Retainer	2
125	3656	Switch (33E)	1	196	1539	Bushing	1
126	3680	Plunger Cap	1	197	4422	Instrument Decal	1
127	3900	Transmission Case R.H.	1	199	4429	Clutch Rod	1
128	3901	Transmission Case L.H.	1	200	4430	Clutch Pedal	1
129	3902	Brake Drum	1	201	4431	Ground Switch to Coil Wire	1
130	3903	Brake Shaft Gear	1	202	4432	Starter Switch to Starter Wire	1
131	3904	Axle	2	203	4433	Battery to Starter Wire	1
132	3905	Differential Case	2	204	4434	Generator to Ammeter Wire	1
133	3906	Bull Gear	1	208	1227	3/8 x 1 1/2 Roll Pin	1
134	3907	Spline Shaft	1	209	3930	Hood Stand Channel Strut	2
135	3908	Axle Gear	2	215	4900	Frame Ass'y.	1
136	3909	Differential Pin	5	217	4904	Hitch	1
137	3910	Cluster Shaft	1	218	4427	Hood Stand Channel Ass'y.	1
138	3912	Gasket	1	219	1755	Street El 90° 3/4" Std.	1
139	4437	Brake Band Ass'y.	1	220	1756	3/4" Lock Nut	1
140	3915	Locating Pin	2				



Lawn Ranger Rotary Mower

PARTS LIST FOR LAWN RANGER ROTARY MOWER

When Ordering Parts Always List Part Number and Name of Part.

Ref. No.	Part No.	Name	Quantity
1	4917	Deck	1
2	4924	Clutch Latch	1
3	4927	Clutch Pad	1
4	4931	Shield	1
5	4151	Twin Housing & Bearings	1
6	3726	Housing	1
7	1508	Bearing	4
8	1303	Oil Seal	2
9	3724	Spindle	2
10	3716	Cup	2
11	1382	Pin - Roll $\frac{1}{4}$ x $\frac{3}{4}$	4
12	3718	Blade - Rotary - R.H.	1
13	3719	Blade - Rotary - L.H.	1
14	1336	Washer - Dome	2
15	1398	Screw - Hex - Nylock $\frac{3}{8}$ - 16 x $\frac{3}{8}$	2
16	1535	Race - Bearing Thrust	4
17	1534	Bearing - Thrust	2
18	1194	Key #5	2
19	3131	Gear Spur	2
20	1127	Snap Ring	2
21	1020	Flitting - Grease	2
22	1443	Hex. H. Cap Screw $\frac{3}{8}$ x 18- $\frac{3}{4}$	4
23	1407	Hex. Hd. Nut Nylock $\frac{3}{8}$ x 18	4
24	4150	Ass'y. Housing - Cross Shaft	2
25	3138	Housing	1
26	1515	Bearing	1
27	1623	Pulley Idler	1
28	1526	Washing - Grease	2
29	1363	Bolt - Hex $\frac{3}{8}$ -16 x $\frac{3}{8}$ CP	1
30	1439	Bolt $\frac{1}{2}$ -20 x 1 CP	1
31	1406	Nut - Nylock $\frac{1}{2}$ -20 x 1	1
32	1436	Washer - $\frac{1}{2}$ SAE CP	1
33	1486	Spring - Clutch	2
34	3715	Shaft	1

Ref. No.	Part No.	Name	Quantity
35	3130	Gear - Face	2
36	1185	Washer - Lock $\frac{3}{8}$	2
37	1194	Key - Woodruff #5	2
38	1122	Key - Woodruff #9 Pulley	1
39	1613	Pulley $3\frac{1}{2}$ Dia.	1
40	1042	Screw - Set $\frac{3}{16}$ -18 x $\frac{3}{8}$	1
41	1426	Bolt - Hex. $\frac{3}{8}$ -16 x $1\frac{1}{2}$	6
42	3141	Cover - Gear	2
43	1304	Screw - Hex. Hd. #8 - 32 x $\frac{1}{4}$ Self Top.	8
44	3757	Plug - Button	2
45	1587	Belt 43" A Section	1
46	1418	Washer - Lock $\frac{3}{8}$	4
47	1408	Nuts - Nylock $\frac{3}{8}$ -16	12
48	1343	Nut $\frac{3}{8}$ x 18	2
49	4935	Bracket - L.H.	1
50	4934	Bracket - R.H.	1
51	1423	Bolts $\frac{3}{8}$ -16 x $\frac{3}{4}$	4
52	4940	Link - Front	2
53	4939	Link - Rear	2
54	4938	Rod - Front (Link Pivot)	1
55	1017	Washer $\frac{1}{2}$ SAE Plain	5
56	1002	Pin - Cotter $\frac{1}{8}$ x 1	5
57	4936	Rod - Rear (Link Pivot)	1
58	1425	Bolt $\frac{3}{8}$ -16 x 1	4
59	4937	Spacer	4
60	4914	Bar - Lift	1
61	1454	Washer $\frac{3}{8}$ SAE Plain	4
62	3725	Cover - End Plate	2
63	1391	Screw - Rd. Hd. Mach. $\frac{1}{4}$ -20 x $\frac{3}{4}$ (SEMS)	10
64	4121	Wheel - 6" Dia.	2
65	4177	Stud - Shoulder	2
66	1484	Decal (Caution)	2
67	3710	Decal	2