

REO
REO
REO
REO

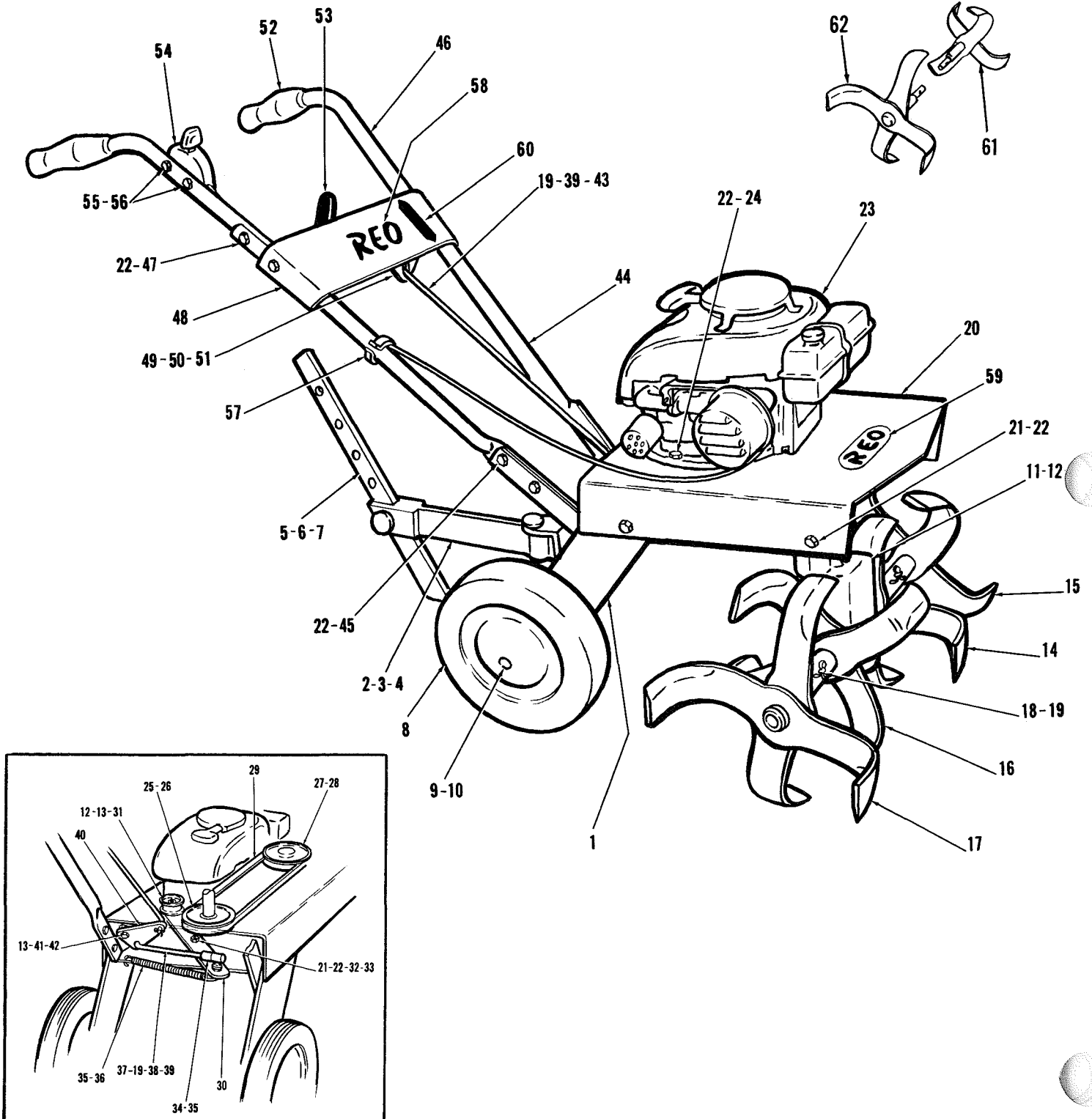
MODEL V 312-L

REO 4 CYCLE TILLER

REO
REO
REO
REO

TINES

14" DIAMETER - 26" WIDTH



ORDER PARTS BY NUMBER ONLY - NOT BY INDEX NUMBER

SEE PARTS LIST ON REVERSE SIDE

ORDER PARTS FROM YOUR REO SERVICE DISTRIBUTOR

REO MODEL V312-L ROTO TILLER

Order Parts by Part Number Only - Not Index Number

INDEX NUMBER	PART NUMBER	DESCRIPTION	INDEX NUMBER	PART NUMBER	DESCRIPTION
1	MW-10524	Frame	32	MW-10517	Pivot
2	MW-10469	Depth Bar Support	33	GM-446470	Washer
3	MW-10409	Pin	34	MW-8951-3	Ball Joint
4	GM-137185	Cotter Pin	35	MW-8952-6	Nut
5	MW-10349	Depth Bar	36	MW-8835	Spring
6	GM-138086	Clevis Pin	37	MW-10515	Control Rod
7	MW-4894	Pin	38	GM-120368	Nut
8	MW-10496	Wheel	39	GM-120393	Washer
9	GM-122491	Bolt	40	MW-10428	Bellcrank
10	GM-120238	Nut	41	MW-10351	Spacer
11	MW-10382	Gear Box Assembly	42	GM-120233	Bolt
12	GM-122150	Bolt	43	MW-10439	Control Rod
13	MW-8952-7	Nut	44	MW-10395	Handle (lower)
14	MW-10497	Tine Assy. L.H. Inner	45	GM-120229	Bolt
15	MW-10498	Tine Assy. L.H. Outer	46	MW-10394	Handle (upper)
16	MW-10499	Tine Assy. R.H. Inner	47	GM-122040	Bolt
17	MW-10500	Tine Assy. R.H. Outer	48	MW-10476	Panel
18	MW-10411	Pin	49	MW-10435	Plate
19	GM-121222	Pin	50	GM-121926	Bolt
20	MW-10504	Plate	51	MW-8952-3	Nut
21	GM-122017	Bolt	52	MW-10374	Grip
22	MW-8952-5	Nut	53	MW-8067	Grip
23	MW-8741	Engine	54	MW-10516	Throttle Control
24	GM-122027	Bolt	55	GM-155153	Screw
25	MW-10505	Pulley	56	MW-8952-1	Nut
26	GM-124546	Key	57	MW-4846	Clip
27	MW-10425	Pulley	58	MW-8605	Decal (Reo)
28	MW-10509	Key	59	MW-8606	Decal (Reo)
29	MW-10510	Belt	60	MW-10525	Decal (Shift)
30 and 31	MW-10513	Idler Assembly	61	MW-10501	Tine Extension L.H. (opt.)
30	MW-10511	Idler Arm	62	MW-10502	Tine Extension R.H. (opt.)
31	MW-8821	Pulley			