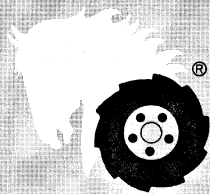


PARTS LIST AND INSTRUCTIONS



Wheel Horse®

WHEELHORSE PRODUCTS, INC. • SOUTH BEND, IND.

ASSEMBLY

A. Place the tractor on which the mower is to be mounted on a clean smooth floor or other surface, making sure that there is adequate clear space for the mounted mower. Remove the mower parts from the box and arrange in a convenient manner along side the tractor.

B. Place the 59" belt, Part No. 1588, around the 2½" pulley in the center of the cross shaft and attach the shaft support assembly to the tractor frame using four ¾ x 1" hex. head bolts, nuts, and lockwashers. These bolts are to be placed in the third and fifth holes from the front end of the tractor frame.

C. Insert the end of the shaft on which the frame pivots Parts No. 1962 into the hole in the center of the cross bar in the frame assembly Part No. 1954. (NOTE: Make sure the collar Part No. 1085 is installed on side of frame as shown in the exploded view before installing shaft.) Attach the bracket on the rear end of the shaft to the tractor frame at the holes near the bottom of the frame bracket which bolts to the transmission. Two ½ x 1" hex. head bolts, nuts, and lockwashers are provided for this purpose.

D. With the left lever in place on the pin at the rear of the drive unit, insert pin into the hole in the rear arm of the frame assembly Part No. 1954 and secure with a ¾ x 1" cotter pin. Bolt link at front of drive housing to belt guard portion of mower frame using two ¾ x 1" hex. head bolts, and lockwashers.

E. With set screw in collar Part No. 1085 loose, install the belt around the two idlers and the 4" pulley on the drive unit. Tighten the belt by moving the mower frame rearward on the shaft until proper tension is obtained by adjusting the bolt Part No. 908064-4 and locking the bolt with the hex nylock nut Part No. 915115-6. Slide collar Part No. 1085 forward on shaft and secure with set screw.

F. Connect idler arm assembly to attachment clutch on tractor. **Note:** When the SMS-425 is used on the 875-1075-1055 or 1045 the idler arm bracket must be set out further because the engine pulley sets out further. There are three holes in the idler arm stud which will allow you to position the idler arm bracket. Place the idler arm assembly, Part No. 5593 on the stud so that there is a hole on each side of idler arm and place a hairpin cotter in each hole. The cotter pin retaining the idler arm assembly must be removed to do this. Reinstall cotter pin after connection is made. No cotter is required on connection between idler arm and link from clutch pedal. Push the clutch pedal forward to the detent position and slide 34" belt over engine pulley and 5" mower pulley. Release foot clutch pedal and check pulley alignment. Tightness of belt is automatic through tension spring on tractor.

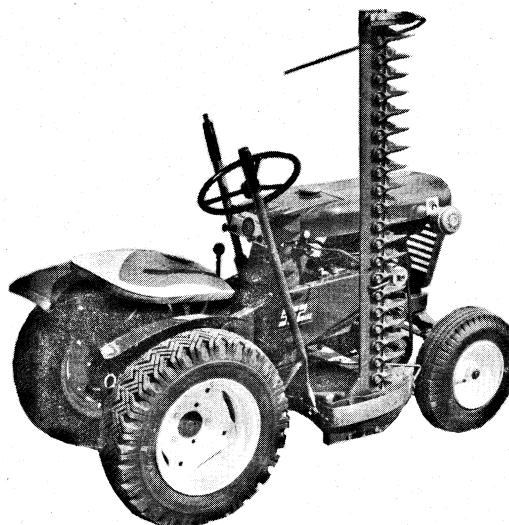
G. Remove the nut and large washer from the carriage in the front end of the lower shoe and install grass rod, Part No. 5597. Replace nut and washer above the rod. The position of this rod can be varied for the most desirable operation.

H. Install the spring Part No. 1014, between the cotter pin in the lift lever and the one in the rear frame arm.

I. Attach the travel hook bracket, Part No. 2700, to the tractor hood stand using two ¼ x ¾" bolts. The original bolts in the tractor must be removed. The cutter bar hook, Part No. 2666, will swing back and down into the tool box when the mower is being operated.

J. Install lift rod Part No. 3495 thru assembly frame Part No. 1954 and secure with one hairpin Part No. 933504-4. Install the top of the lift rod Part No. 3495 thru top hole of tractor lift arm and secure with hairpin Part No. 933504-4.

SIDE MOUNTED SICKLE SMS-425



K. Fill the sickle drive housing with #30 motor oil to the level of the large filler plug in the side of the housing with the cutter bar on a level surface.

L. Turn the flywheel pulley by hand. If noticeable tightness is apparent inspect the guards and hold down clips. Tightness can often be eliminated by loosening the guard bolts then turning the unit several times by hand and retightening the bolts. When the unit turns relatively easily by hand start the tractor engine and run mower slowly for a few minutes. A light grade of machine oil or motor oil should be used to lubricate any hot spots that develop on the knife until it is properly worn in. Gradually increase speed until it is operating under full throttle.

OPERATION

1. The height of the cut is controlled by the position of the cutter bar skid, Part No. 2234, at the outer end of the bar and the lower shoe, Part No. 2677. The cutter bar skid is adjusted by the addition or removal of skid spacers, Part No. 2233. Four holes are provided in the rear end of the lower shoe for adjustment.

2. The short belt tension is maintained automatically by the tension spring on the tractor. The long belt is adjusted as explained in the assembly instructions.

3. The position of the grass rods at both ends of the cutter bar may be adjusted to suit the various conditions under which the mower may operate. Correct positioning prevents plugging at the lower shoe.

4. The knife assembly may be removed for sharpening or replacement by loosening the jam nut, Part No. 915089-4. **NOTE: It is very important that this pin and jam nut be kept tight. Looseness can destroy the threads in the drive arm.**

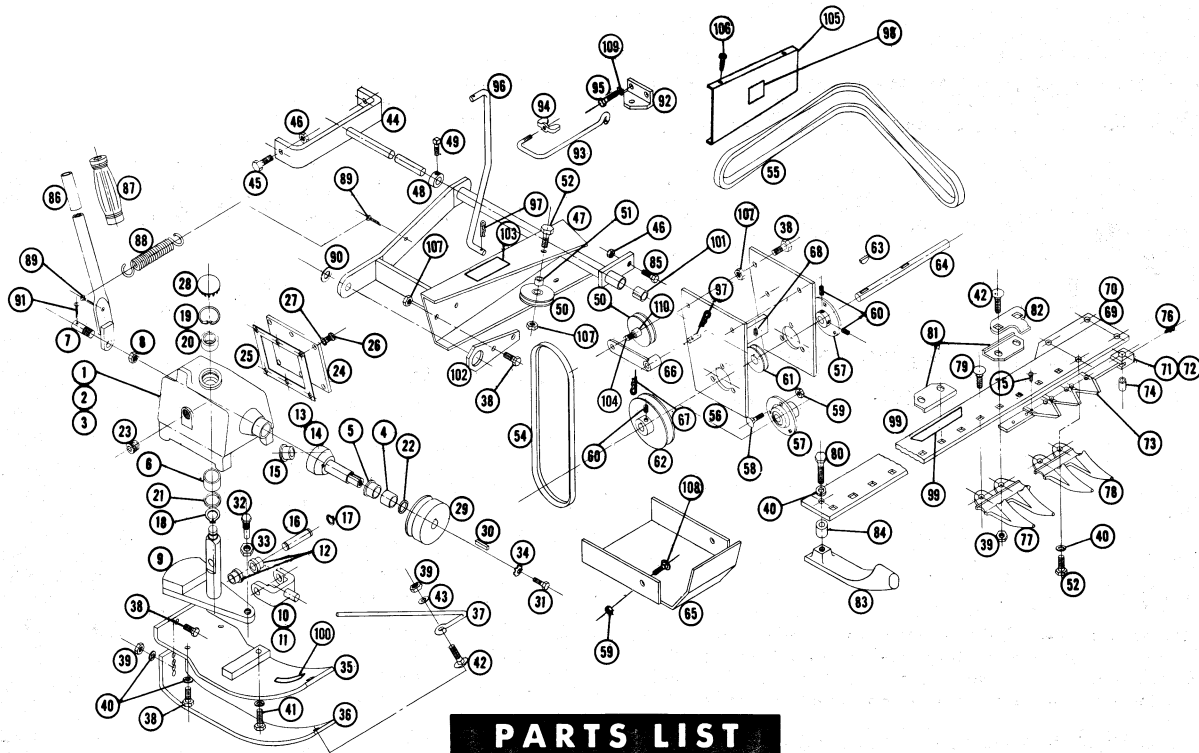
5. For transporting, the cutter bar may be raised to a vertical position. Insert the cutter bar hooks into the hole in the cutter bar and secure with the wing nut provided. The placement of this hook between two guards prevents accidental operation of the knife when in transport position.

6. Safety First: Caution should be exercised in the operation of this machine. Children and pets should be kept away from the mowing area. Never attempt to remove obstructions from the cutter bar without first shutting off the tractor engine.

CAUTION: When operating on slopes or rough terrain, **LEFT WHEEL** should be equipped with wheel-weight #WW-12 to counter balance the weight of the mower and to provide greater stability.

LUBRICATION

The sickle drive housing should be kept filled to the level of the large filler plug with #30 motor oil. This oil level should be checked periodically. The knife head should be lubricated with a good grade of gun grease after every four hours of operation. All other high speed bearings are sealed and need no further attention. Machine oil or motor oil may be used at hinge points to insure freedom of operation and prevent rust.



PARTS LIST

When ordering parts always list Part No. and name of part.

Ref. No.	Part No.	Description	No. Req'd.	Ref. No.	Part No.	Description	No. Req'd.
1	5041	Ass'y. Housing Complete - Sickle Drive	1	56	5599	Ass'y. Shaft Support - Weldment	1
2	2701	Ass'y. Housing & Bearings	1	57	5269	Ass'y. Bearing - Ball - Flanged	2
3	2644	Housing	1	58	900037-4	Bolt - Carriage $\frac{5}{16}$ -18 x $\frac{3}{4}$	4
4	2694	Bearing - Bronze Sleeve	1	59	015112-6	Nut - Nylock $\frac{3}{16}$ -18 Hex.	6
5	2692	Bearing - Bronze Sleeve	1	60	909862-6	Set Screw $\frac{3}{16}$ -18 x $\frac{5}{16}$	6
6	2695	Bearing - Bronze Sleeve	1	61	1608	Pulley 2 1/2 Dia.	1
7	2655	Pin	1	62	1969	Pulley 5.04 Dia.	1
8	915090-4	Nut - $\frac{3}{4}$ -16 Jam	1	63	937014	Key #9 Woodruff	2
9	2683	Ass'y. Shaft - Weldment	1	64	1965	Shaft	1
10	2687	Ass'y. Yoke	1	65	2660	Shield - Pulley	1
11	2690	Yoke	1	66	5593	Ass'y. Idler Arm - Weldment	1
12	2686	Bearing - Bronze Sleeve	2	67	932008-4	Hairpin	1
13	2702	Ass'y. Shaft - Wobble Drive	1	68	909848-6	Set Screw $\frac{1}{4}$ -20 x $\frac{1}{4}$	2
14	2679	Shaft - Wobble Drive	1	69	5042	Ass'y. Cutter Bar Complete 42"	1
15	2693	Bearing - Bronze Sleeve	1	70	2703	Ass'y. Bar-Guard	1
16	2691	Pin - Yoke	1	71	2696	Ass'y. Knife Bar & Sections	1
17	936121	Snap Ring - Truarc .625 Shaft	2	72	2688	Ass'y. Knife Bar - Weldment	1
18	936122	Snap Ring - Truarc .669 Shaft	1	73	2236	Section	21
19	936028	Snap Ring - Truarc 1.562 Bore	1	74	1498	Bushing	1
20	5596	Bearing - Ball .687 Shaft	1	75	1071	Rivet	42
21	1482	Seal 1 1/4 Shaft	1	76	1291	Fitting - Grease	1
22	1232	Seal 1" Shaft	1	77	2230	Guard - Cutter Bar	10
23	943428	Plug 1 x 1 1/2 NPTF	1	78	2684	Guard - Cutter Bar	1
24	2657	Cover - Plate	1	79	900063-4	Bolt - Carriage $\frac{3}{8}$ -16 x 1	13
25	2656	Gasket	1	80	908038-4	Bolt Hex. $\frac{3}{8}$ -16 x 2	1
26	909017-4	Screw - Rd. Hd. #10-24 x $\frac{3}{8}$	6	81	2231	Plate - Cutter Bar	4
27	920079-4	Washer - Lock #10	6	82	2232	Clip - Cutter Bar	4
28	935135-4	Plug - Button	1	83	2234	Skid - Cutter Bar	1
29	2659	Pulley 4" Dia.	1	84	2233	Spacer - Skid	2
30	1005	Key - Sq. $\frac{3}{16}$ x $\frac{3}{16}$ x 1	1	85	908064-4	Bolt - Hex. $\frac{1}{2}$ -13 x 2 3/4	1
31	908033-5	Screw - Nylock $\frac{3}{8}$ -16 x $\frac{7}{8}$	1	86	2678	Ass'y. Lever - Lift	1
32	2680	Pin - Sickle Drive	1	87	1000	Grip	1
33	915089-4	Nut - Hex. $\frac{5}{8}$ -18 Jam	1	88	1014	Spring	1
34	1336	Washer - Dome	1	89	932017-4	Cotter Pin $\frac{1}{8}$ x 1	2
35	2643	Ass'y. Shoe - Upper - Weldment	1	90	920015-4	Washer $\frac{3}{4}$ I.D. Plain	1
36	2677	Shoe - Lower	1	91	932034-4	Pin - Cotter $\frac{3}{16}$ x 1	1
37	5597	Rod - Grass	1	92	2700	Bracket - Travel Hook	1
38	908034-4	Bolt - Hex. $\frac{3}{8}$ -16 x 1	9	93	2666	Hook - Travel Support	1
39	915113-4	Nut - Hex. $\frac{3}{8}$ -16	19	94	915586-4	Nut - Wing $\frac{3}{8}$ -16	1
40	920083-4	Washer - Lock $\frac{3}{8}$ Dia.	6	95	908005-4	Bolt - Hex. $\frac{1}{4}$ -20 x 1	2
41	908036-4	Bolt - Hex. $\frac{3}{8}$ -16 x 1 1/2	1	96	3495	Rod - Lift	1
42	900064-4	Bolt - Carriage $\frac{3}{8}$ -16 x 1 1/4	9	97	933504-4	Hairpin	6
43	920039-4	Washer - Plain $\frac{3}{8}$ Dia.	1	98	4410	Decal	1
44	1962	Ass'y. Bracket & Rod - Weldment	1	99	5604	Decal - Attachment	1
45	908057-4	Bolt $\frac{1}{2}$ -13 x 1 Hex.	2	100	3710	Decal - Grease	1
46	915115-6	Nut - Nylock $\frac{1}{2}$ -13	3	101	1957	Bushing	1
47	1954	Ass'y. Frame (Weld)	1	102	1966	Link	1
48	1085	Collar	1	103	4498	Decal - Gen. Caution	1
49	909531	Set Screw $\frac{1}{4}$ x 20 x $\frac{3}{8}$ Sq. Hd.	1	104	908033-4	Bolt Hex. $\frac{3}{8}$ -16 x $\frac{7}{8}$	1
50	1623	Pulley Idler $\frac{3}{16}$ Dia.	3	105	5598	Cover Belt	1
51	1967	Spacer	2	106	926452-4	Screw Hex. #8 - 32 x $\frac{3}{8}$ Self Tap	6
52	908035-4	Bolt $\frac{3}{8}$ -16 x 1 1/4 Hex.	3	107	915663-4	Nut $\frac{3}{8}$ -16 Elastic Stop	4
53	915113-6	Nut - Nylock $\frac{3}{8}$ -16	4	108	900038-4	Bolt Carriage $\frac{3}{16}$ -18 x 1	2
54	1572	Belt "A" Sec. 34"	1	109	920081-4	Lockwasher $\frac{1}{4}$ Dia.	2
55	1588	Belt "A" Sec. 59"	1	110	1536	Bushing	1