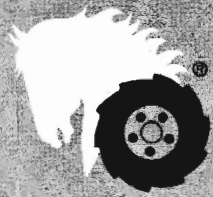


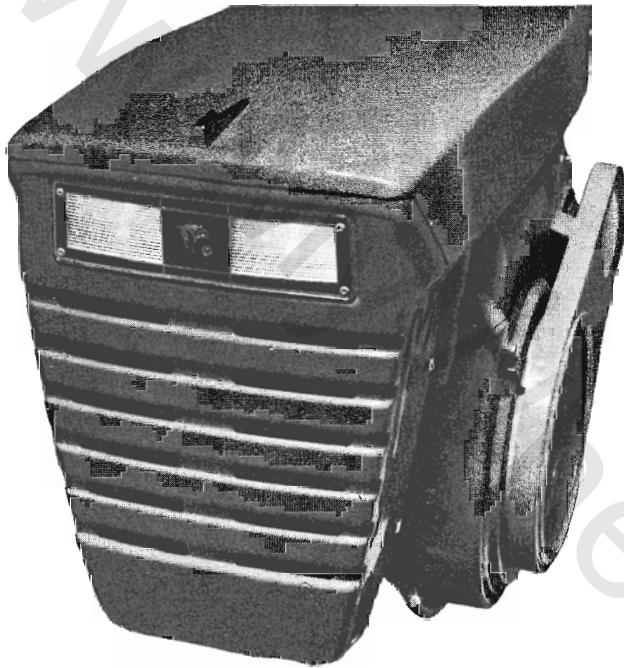
PARTS LIST AND INSTRUCTIONS



Wheel Horse

WHEELHORSE PRODUCTS, INC. • SOUTH BEND, IND.

ASSEMBLY LIGHT PANEL ACCESSORY MODEL 8-0811



DESCRIPTION

The Model 8-0811 Light Panel Accessory fits the Commando 6 and Commando 8 Tractors.

ASSEMBLY

1. **IMPORTANT:** Disconnect the battery ground cable from the battery. This will prevent hot sparks and shorts.

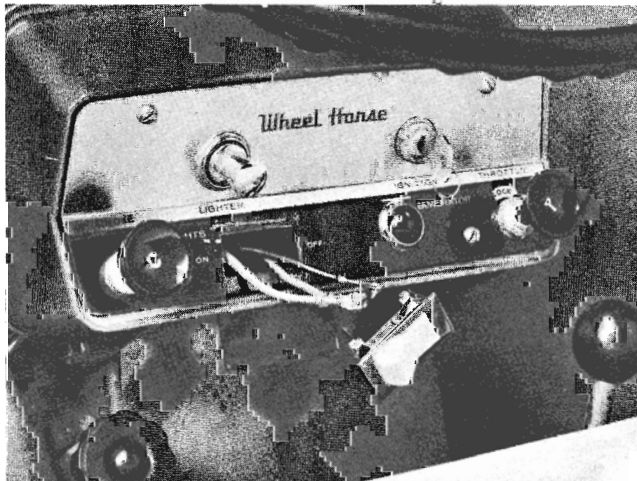


Figure I

2. On the Commando 8 Model the fuel tank must be moved to expose the rear of the dash panel.

- A. Loosen screw on the tank strap.
- B. Slide the tank forward and to the right side of the tractor.

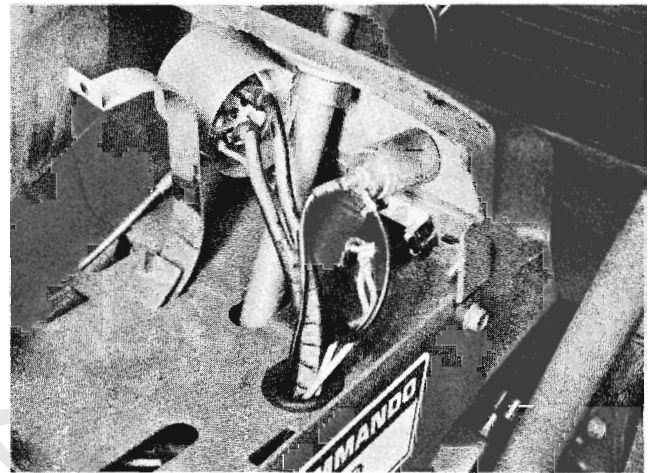


Figure II

3. Remove the plastic plug button in the switch hole by hitting the plastic stems off with a screw-driver tip.

4. Connect the red wire of the light harness and the red tail light wire to the center terminal of the switch. The black wire on the harness is connected to the side terminal. (See Fig. I and Wiring Diagrams.)

5. String wires through the switch hole and down through the rubber grommet. (See Fig. II.)

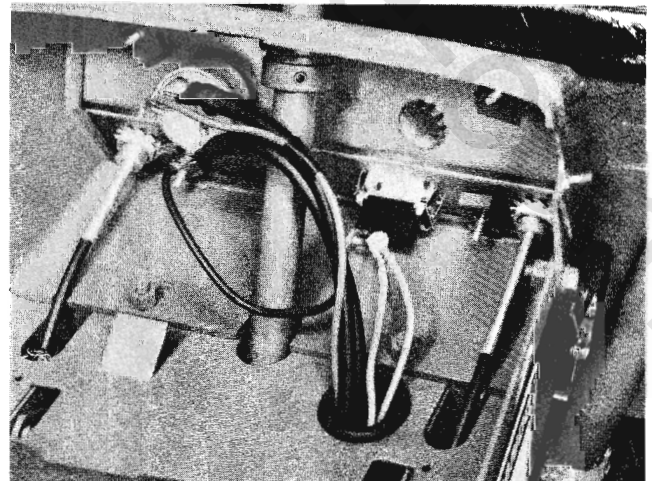


Figure III

6. The short black wire is connected to the cigarette lighter on Commando 8 Model (see Fig. II) and to the "B" terminal of the ignition switch on the Commando 6 Model (see Fig III).

7. The hood escutcheon plate can be removed by breaking off the stems with a screwdriver tip. Install the two $\frac{1}{8}$ rivets through the hood and reflector housing. The rivets are held in place with the push-on nuts, the slotted end of the nut goes on the rivet first, see Fig IV and the Exploded View Drawing.

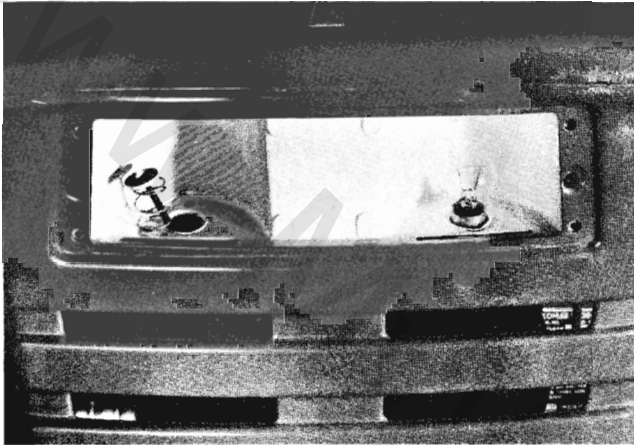


Figure IV

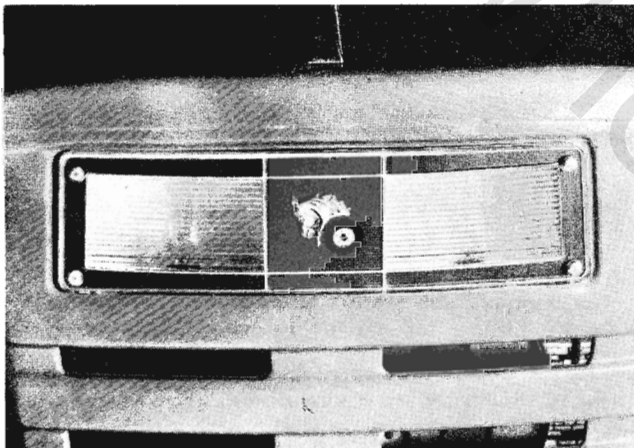


Figure V

8. Insert the socket wires, springs, and bulbs as shown in Fig. IV.

9. Mount the lens to the opening and fasten with the four machine screws as shown in Fig. V.

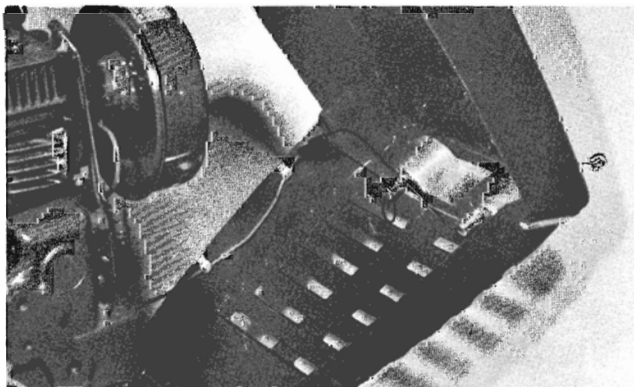


Figure VI

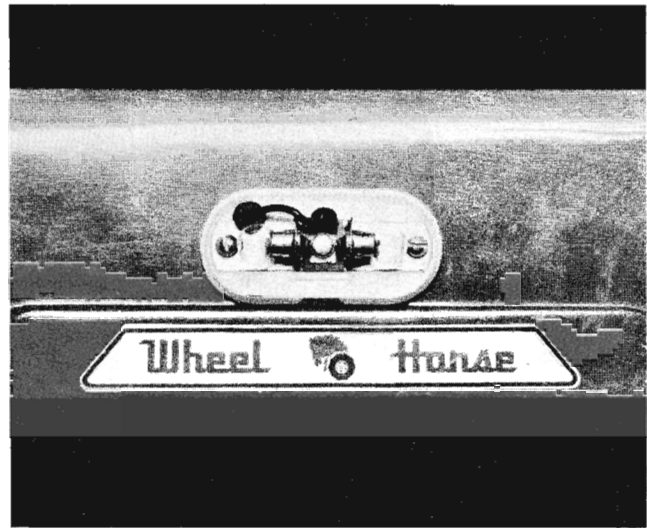


Figure VII

10. String the red wire of the harness forward under the left side of the engine and along the left side of the hood. Connect the wire leads to the connector as shown in Fig. VI. Fasten the wire to the hood with the clips provided. Any excess wire can be looped and taped to the inside of the hood.

11. Mount tail light base to the rear of the fender as shown in Fig. VII.

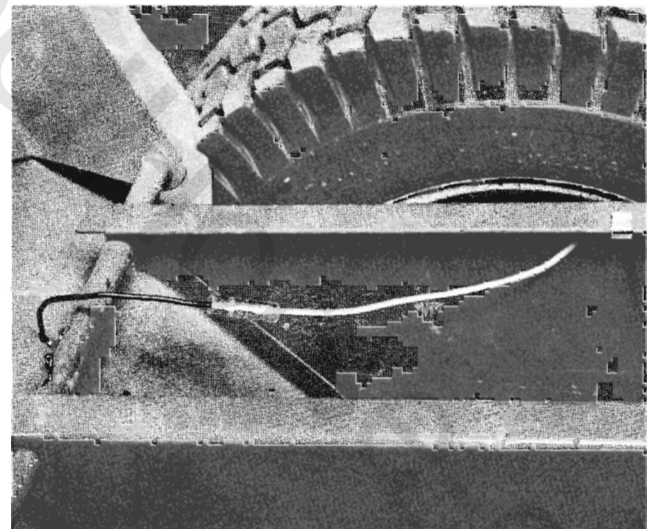
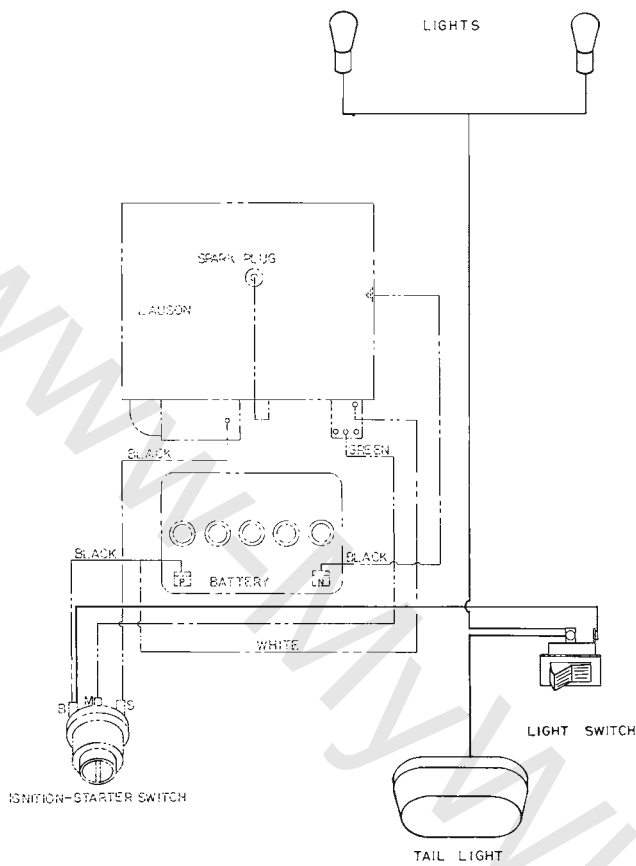


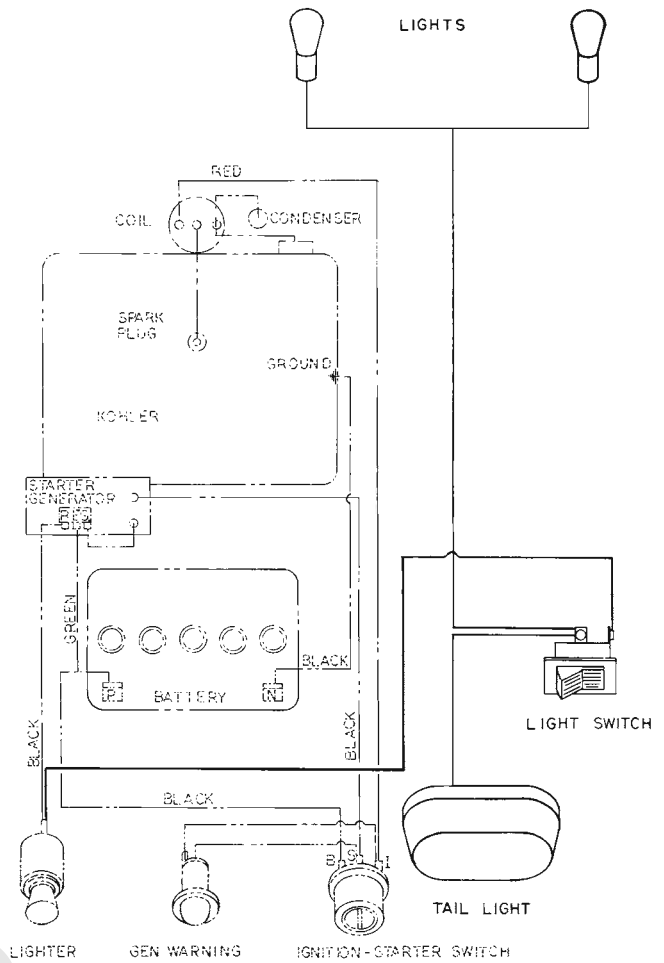
Figure VIII

12. String the red tail light wire down inside the hoodstand (stay behind lift arm shaft) and back inside the tool box. Connect the black tail light wire to the red lead from the switch with the connector as shown in Fig. VIII.

13. Mount fuel tank back in position, (Commando 8). Connect Ground wire, and try lights. If lights fail to come on — check wiring — see diagrams. The ground for the lights is transmitted through the hood latch rod, therefore the lights may go out when the hood is up.



Commando 6 Wiring Diagram



Commando 8 Wiring Diagram

When ordering parts always list Part No. and name of part.

Ref. No.	Part No.	Description	No. Req'd.
1	7223	Ass'y. Reflector & Socket	1
2	7226	Ass'y. Wire & Terminal (Service Only)	1
3	7227	Spring (Service Only)	1
4	5474	Bulb (#1141)	2
5	7075	Lens	1
6	7229	Screw S.T. #6-32 x 3/8 Special	4
7	7184	Switch	1
8	7185	Harness	1
9	3023	Clip	5
10	7618	Connector	1
11	923003	Rivet 1/8 x 3/8 Flat Head	2
12	7429	Nut 1/8 Dia. (Pal Nut PB-125070)	2
13	5486	Ass'y. Base — (Service Only)	1
14	5487	Cover (Service Only)	1
15	5488	Bulb 12V. — (Service Only)	2
16	909138-4	Bolt — Rd. Hd. #10-32 x 5/8	2
17	915551-4	Nut — Hex #10-32	2
18	920079-4	Lockwasher #10	2
19	6922	Connector	1
20	7574	Ass'y. Wire — Tail Light	1

